

FCC NOTICE

THIS DEVICE COMPLIES WITH PART 15 OF THE FCC RULES.
OPERATION IS SUBJECT TO THE FOLLOWING TWO CONDITIONS:
(1) THIS DEVICE MAY NOT CAUSE HARMFUL INTERFERENCE, AND
(2) THIS DEVICE MUST ACCEPT ANY INTERFERENCE RECEIVED,
INCLUDING INTERFERENCE THAT MAY CAUSE UNDERSIRED
OPERATION.

This equipment has been tested and found to comply with the limits for a Class B digital device, pursuant to part 15 of the FCC Rules. These limits are designed to provide reasonable protection against harmful interference in a residential installation. This equipment generates, uses and can radiate radio frequency energy and, if not installed and used in accordance with the instructions, may cause harmful interference to radio communication. However, there is no guarantee that interference will not occur in a particular installation. If this equipment does cause harmful interference to radio or television reception, which can be determined by turning the equipment off and on, the user is encouraged to try to correct the interference by one or more of the following measures :

- Reorient or relocate the receiving antenna.
- Increase the separation between the equipment and receiver.
- Connect the equipment into an outlet on a circuit different from that to which the receiver is connected.
- Consult the dealer of an experienced radio/TV technician for help.

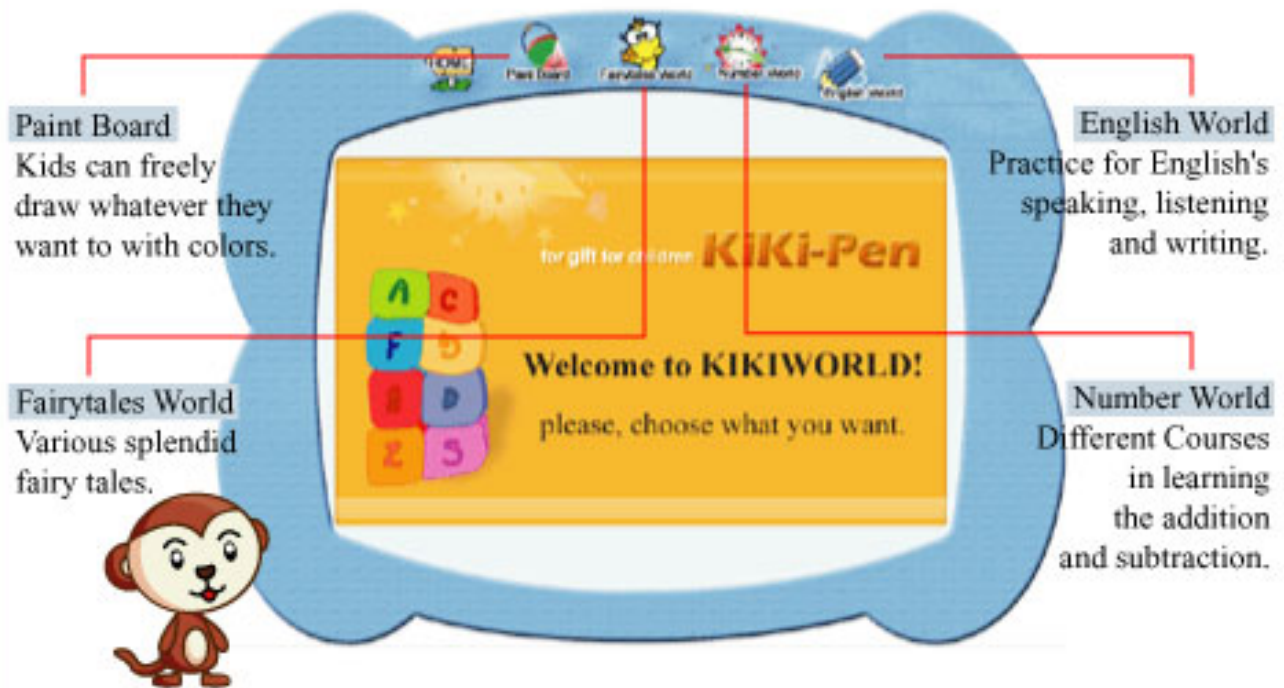
CAUTION:

Changes or modifications not expressly approved by the party responsible for compliance could void the user's authority to operate the equipment.

This is the Homepage of KIKIWORLD.

Please check the screen for KIKIWORLD first.

The screen of Homepage is consisting of the Paint Board, the Fairytales World, the Number World, the English World.





LIST

-  **Installation**
-  **Paint Board**
 - Fairytales World**
 - Number World**
 - English World**



Installation



Put the install CD into the CD-ROM drive and then the install program will automatically run with following screens.
Pressing "Next" or "ENTER" will go to next screen.



Installation



The below picture will help you to locate the files of installation.

If you want to change the location, then you can change it by now or you just press "Start to Install".



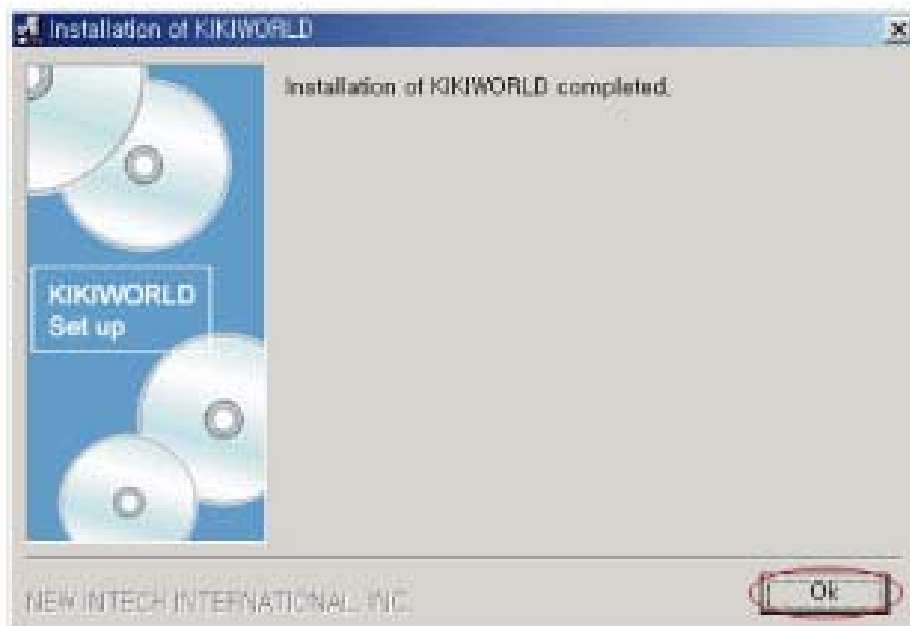
Installation



The process of installation will be normally completed, if not press "Stop" button.

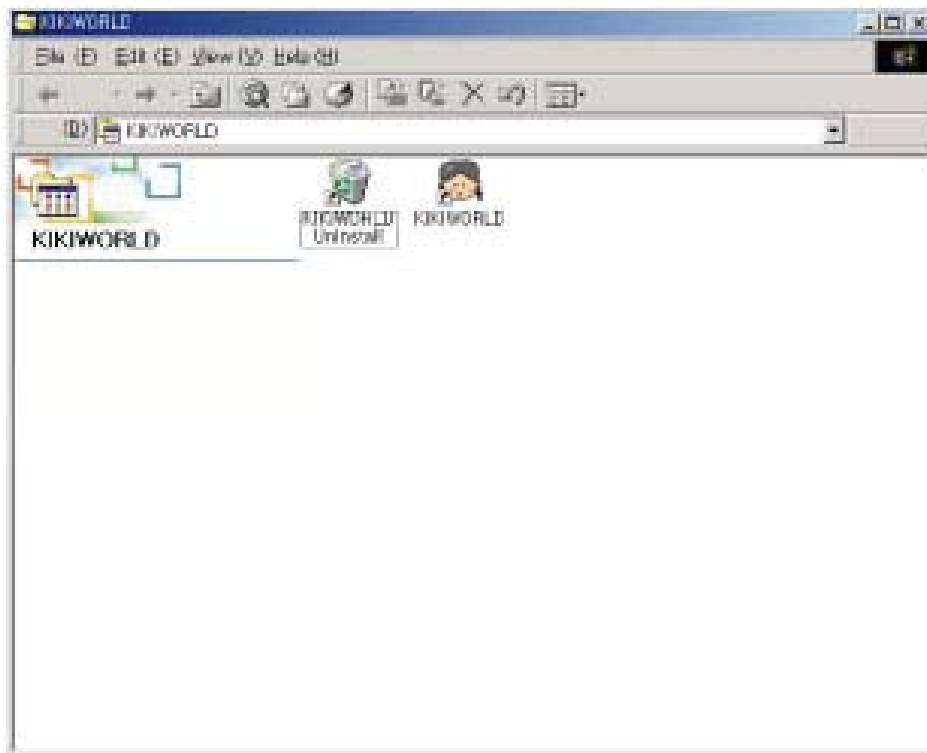


Installation



After the installation has been done, to press "Finish" then you will see the screen for the device driver of KIKIWORLD.

Installation



You can see the screen for the location of the installed programs.

To press the "KIKIWORLD" on the location of program installation or directly press program's screen.



Installation



If you want to delete the program, please press "Start-Program-KiKiWORLD-KiKiWORLD Delete", then the delete will be done.



Paint Board



Hit Paint Board for entering various different paintings.
Select the painting that you want to paint.



Paint Board



In the Paint Board,
we are able to paint and fill with colors.



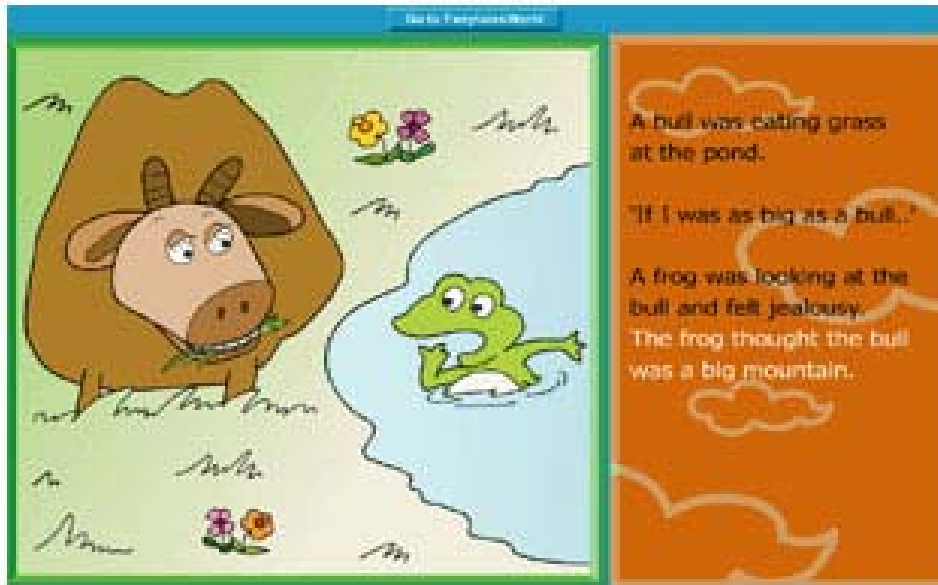
Fairytales World



Hit the icon to enter the world of various fairytales.



Fairytales World



Select the fairytales that you want to read.
(To exit, hit the button of the next fairytale.)



Number World



The Number World is
consisting of three levels.



Number World

Comparing (First courtyard)

There are mice. Now, take a look at the mice and decide which side, left or right has more?

next

First courtyard
Second courtyard
Third courtyard

There are comparison of numbers, additions and subtractions. Also we can paint colors while calculating, and we can answer questions while reading stories.



English World



There are courses of learning English alphabets and English myths.



English World

The screen features a blue border with five icons at the top: a book, a globe, a cartoon animal, a clock, and a pencil. The main content area includes an illustration of an ant and a grasshopper with the text "An ant and a long-horned grasshopper". Below this is a smaller version of the same illustration. To the right, a green button says "write the following words", followed by the word "ants" in large black font, and then "ants" in a larger, light grey font inside a white box. At the bottom center is a "next" button with a hand icon.

Can read, listen and write
while hit the English alphabets



15