

AFTERGLOW WII REMOTE USER MANUAL

Congratulations on your purchase of the AFTERGLOW Remote for Wii™.

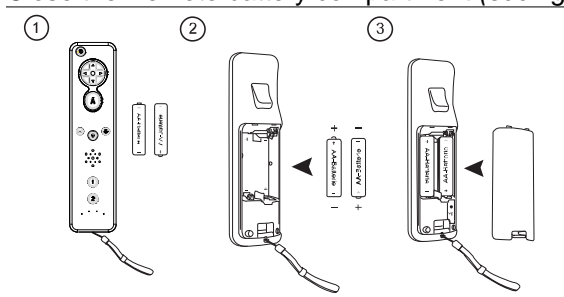
The contents of this package include:

- 1 - Remote for Wii™
- 1 - User Manual

Before using this product, please attach the wrist strap to the end of the Remote.

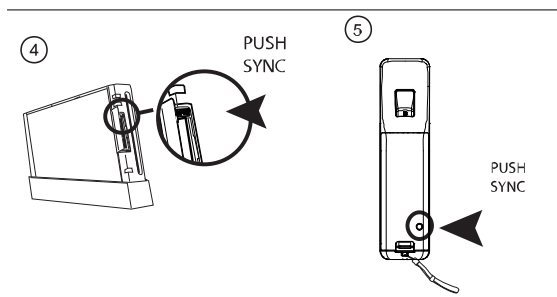
Battery Instructions:

- Open the battery compartment located on the back of the Remote
- Insert the 2 AA batteries, ensuring correct polarity (see figure 2)
- Close the Remote battery compartment (see figure 3)



Synchronization:

- Press the "POWER" button on the top left hand side of the Remote to switch it on
- Synchronize the Remote with the Wii™ console
 - Press the "SYNC" button located on the Wii™ console (see figure 4)
 - Press the "SYNC" button located on the Remote (see figure 5)



Standby Mode:

The Remote will automatically enter standby mode when not in use for a period of time. To exit standby mode, press any button on the Remote.

Troubleshooting Tips:

Remote not working:

- Change the batteries in the Remote
- Remote may be in standby mode (refer to Standby Mode Instructions)
- Ensure the Remote is properly synchronized with the Wii™ console
- Refer to the Wii™ console Instruction Manual for more troubleshooting tips

WARNING:

We recommend taking fifteen-minute breaks for every hour played. If, at any time, you feel joint pain in

your hands, wrists, elbows or elsewhere, stop playing until the symptoms disappear and see your doctor.

USE THE WRIST STRAP.

Game play can involve rapid or vigorous motion. Please use the wrist strap to prevent losing your grip on the controller and causing damage to the Remote or surrounding objects, or injury to other people.

WEAR THE WRIST STRAP WHEN ONE IS PROVIDED.

- Make sure all players use the wrist strap and that the strap is secure.
- When sharing a Remote between multiple players, make sure each person uses the wrist strap properly.
- Wearing the wrist strap will prevent you from accidentally dropping or throwing the Remote during game play, which could damage the Remote or surrounding objects, or cause injury to other people.

DO NOT LET GO OF THE CONTROLLER DURING GAME PLAY.

- Read the Instruction booklet for the game you are playing and follow all game control instructions for correct use of the Remote or accessory controllers.
- Hold the Remote securely and avoid excessive motion, as it may cause you to let go of the Remote and may break the wrist strap.
- If your hands become moist, stop and dry your hands.

ALLOW ADEQUATE ROOM AROUND YOU DURING GAME PLAY.

1. Stay at least three (3) feet away from the television.
2. As you may move around during game play, make sure objects and other people are out of your range of movement or arm motion to prevent damage or injury.

Important Safeguards & Precautions:

- This unit is for indoor use only
- Do not expose to dust, direct sunlight, wet weather conditions, high humidity, high temperature
- Do not expose the unit to splashing, dripping rain or moisture
- Do not immerse in liquid
- Do not disassemble
- Do not use if the equipment is damaged
- Never carry the unit by the cable
- For external cleaning, use a soft, clean, cloth only

NOTE:

THE MANUFACTURER IS NOT RESPONSIBLE FOR ANY RADIO OR TV INTERFERENCE CAUSED BY UNAUTHORIZED MODIFICATIONS TO THIS EQUIPMENT. MODIFICATIONS WILL VOID THE USER AUTHORITY TO OPERATE THE EQUIPMENT.

CAUTION:

Changes or modifications to this equipment not expressly approved by the manufacturer could void the users authority to operate the equipment.

This equipment has been tested and found to comply with the limits for a Class B digital device, pursuant to part 15 of the FCC Rules. These limits are designed to provide reasonable protection against harmful interference in a residential installation. This equipment generates, uses and can radiate radio frequency energy and, if not installed and used in accordance with the instructions, may cause harmful interference to radio communications. However, there is no guarantee that interference will not occur in a particular installation. If this equipment does cause harmful interference to radio or television reception, which can be determined by turning the equipment off and on, the user is encouraged to try to correct the interference by one or more of the following measures:

- Reorient or relocate the receiving antenna.
- Increase the separation between the equipment and receiver.

- Connect the equipment into an outlet on a circuit different from that to which the receiver is connected.
- Consult the dealer or an experienced radio/TV technician for help.

FCC ID: X5B-PL7602D

This device complies with FCC radiation exposure limits set forth for an uncontrolled environment and it also complies with Part 15 of the FCC RF Rules. Operation is subject to the following two conditions:

- (1) this device may not cause harmful interference, and
- (2) this device must accept any interference received, including interference that may cause undesired operation.

IC: 8814A-PL7602D

This device complies with Industry Canada RSS-210. Operation is subject to the following two conditions:

- (1) this device may not cause interference, and
- (2) this device must accept any interference, including interference that may cause undesired operation of the device.

Le présent appareil est conforme aux CNR d'Industrie Canada applicables aux appareils radio RSS-210.

L'exploitation est autorisée aux deux conditions suivantes : (1) l'appareil ne doit pas produire de brouillage, et (2) l'utilisateur de l'appareil doit accepter tout brouillage radioélectrique subi, même si le brouillage est susceptible d'en compromettre le fonctionnement.

©2010 Performance Designed Products. All Rights Reserved.

All other trademarks, brands and names are the property of their respective owners