

***** USER'S MANUAL *****

FCC ID : RKJB70

periric™

wireless dual mouse™



English Manual

Federal Communications Commission (FCC) Warning

THIS DEVICE COMPLIES WITH PART 15 OF THE FCC RULES. OPERATION IS SUBJECT TO THE FOLLOWING TWO CONDITIONS: (1) THIS DEVICE MAY NOT CAUSE HARMFUL INTERFERENCE, AND (2) THIS DEVICE MUST ACCEPT ANY INTERFERENCE RECEIVED, INCLUDING INTERFERENCE THAT MAY CAUSE UNDESIRE OPERATION.

Federal Communications Commission (FCC) Statement

This equipment has been tested and found to comply with the limits for a Class B digital device, pursuant to Part 15 of the FCC Rules. These limits are designed to provide reasonable protection against harmful interference in a residential installation. This equipment generates, uses and can radiate radio frequency energy and, if not installed and used in accordance with the instruction, may cause harmful interference to radio communications. However, there is no guarantee that interference will not occur in a particular installation. If this equipment does cause harmful interference to radio or television reception, which can be determined by turning the equipment off and on, the user is encouraged to try to correct the interference by one or more of the following measures:

- Reorient or relocate the receiving antenna.
- Increase the separation between the equipment and receiver.
- Connect the equipment into an outlet on a circuit different from that to which the receiver is connected.
- Consult the dealer or an experienced radio / TV technician for help.

Warning : A shielded-type power cord is required in order to meet FCC emission limits and also to prevent interference to the nearby radio and television reception. It is essential that only the supplied power cord be used.

Use only shielded cables to connect I/O devices to this equipment.

You are cautioned that changes or modifications not expressly approved by the party responsible for compliance could void your authority to operate the equipment.

Table of Contents

INTRODUCTION.....	5
Package contents	5
Mouse.....	5
Mouse cover.....	5
Copyright.....	5
Overview of mouse functionality	6
Mouse functionality	6
Receiver/charger functionality	6
START USING THE MOUSE	7
Step 1 – Insert the batteries	7
Step 2 – Select the correct size battery cover for your hand.....	7
Step 3 – Connect the receiver/charger to the computer	7
Step 4 – Charging the mouse	8
Step 5 – Synchronise the mouse with the receiver	8
USAGE AND HANDLING OF THE MOUSE.....	9
Tips and advice for better ergonomics	9
Usage of the mouse on a table or another surface.....	9
Attaching and removing the mouse cover.....	9
Attaching the cover	9
Removing the cover	9
Use as a traditional mouse	10
Trackball usage.....	10
Handheld usage of the mouse.....	11
Two hand usage.....	11
Combined usage with a keyboard.....	12
One-handed usage	12
ADDITIONAL INFORMATION	13
Troubleshooting	13
Support	14
Advanced settings	14
Technical specifications	15
System requirements	15
Accessories	15
Warranty	16

Introduction

Welcome as a new Wireless Dual Mouse™ user. We at Perific™ hope that you will find the Wireless Dual Mouse™ a useful tool and that it will become a natural part of your daily computer routine. We recommend that you read this manual in full to ensure that the mouse is installed and used in the correct manner.

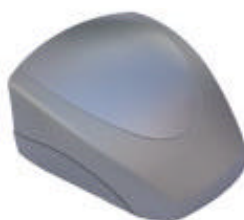
The Wireless Dual Mouse™ is a rechargeable wireless optical mouse that can be used as a traditional mouse or alternatively as a handheld device. This makes it possible for the Wireless Dual Mouse™ to offer many alternative manners of usage allowing you to vary your working position in front of the computer.

By repeatedly varying your working position, ergonomic problems such as pain and stiffness in hands, arms, and neck can be avoided. These complaints are commonly known as *mouse arm*, which is a collective term for a multitude of medical problems related to the use of a computer mouse or other input device. *Mouse Arm Syndrome* (MAS) is a form of RSI - *Repetitive Stress Injury*.

Package contents



Mouse



Mouse cover



Receiver/charger



2 extra battery covers



2st NiMH AAA batteries

Manual (six different languages)

Copyright

This manual is published without guarantee by Perific AB. Perific™ reserves the right at any time to improve or change this manual based on typographical mistakes, errors in information or product improvements, without notice. Such improvements will be introduced in updated editions of the manual, which will be made available at www.Perific.com and www.perific.se.

Copyright © 2003 Perific AB, all rights reserved. Perific, the Perific logo, and other Perific trademarks are owned by Perific and may be registered trademarks. All other trademarks are the property of their respective owners.

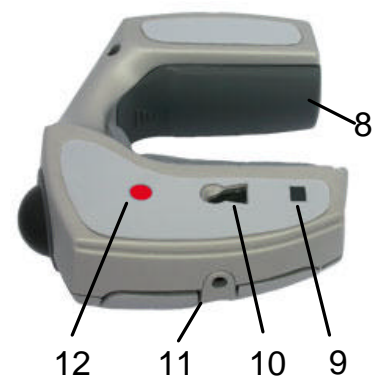
Overview of mouse functionality

Mouse functionality

1. **Front left button** – same functionality as the left button on a standard two button mouse i.e. used to select text and to click menus.
2. **Scroll wheel** – the scroll wheel is used to browse and scroll through a document. The wheel can even be pressed down, which allows you to scroll continuously through a document by either: moving the mouse backwards and forwards or moving the trackball.
3. **Front right button** – same functionality as the right button on a standard two-button mouse, in most programs a drop-down menu will appear when the button is pressed.
4. **LED** – indicates battery status during usage and charging.
5. **Rear right button** – has the same function as the front right button, see above.
6. **Rear left button** – has the same function as the front left button, see above.
7. **Trackball** – a finger-operated trackball used to navigate on screen.
8. **Battery cover** – three sizes supplied.
9. **Desk sensor** – detects whether the mouse is used on a flat surface or off-desk.
10. **Optical sensor** – indicates movement over a surface.
11. **Charging connector** – connects the charge cable of the charger/receiver.
12. **Radio synchronisation button** – used to set up synchronisation of the radio connection between the receiver and the mouse.

Receiver/charger functionality

13. **Receiver USB plug** – plugs into the computer.
14. **Radio synchronisation button/LED** – used to set up synchronisation of the radio connection between the mouse and receiver; indicates reception of data from the mouse.
15. **Charging cable** – used to charge the mouse.
16. **Cable wrapper** – used to adjust the length of the charge cable.

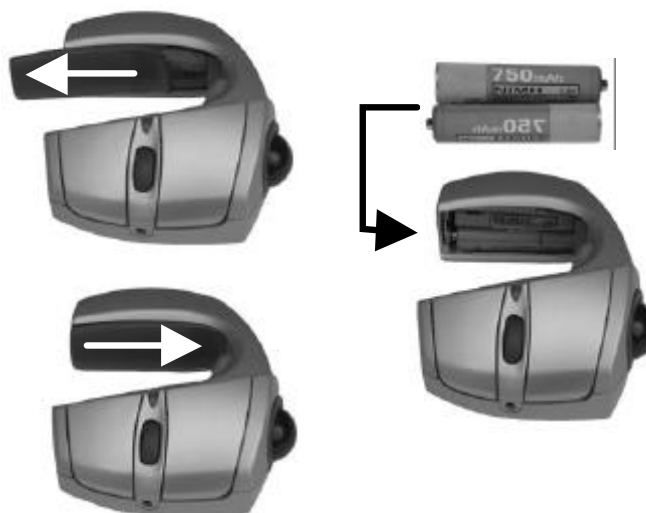


Start using the mouse

Step 1 – Insert the batteries

Use the supplied batteries. Batteries other than NiMH are not recommended.

1. **Remove the battery cover.**
2. **Insert the batteries** according to the instructions on the mouse.
3. **Replace the battery cover.**



Step 2 – Select the correct size battery cover for your hand

The mouse is supplied with three differently sized battery covers, *small*, *medium* (as supplied) and *large*. With the different battery covers you can adjust the size of the mouse to the size of your hand so that it feels comfortable when not using it on the desktop.

1. **Place the mouse in the left hand.**
2. **Test the mouse** by switching between the different sizes of battery covers until the mouse fits comfortably, without being too tight or too loose.



Step 3 – Connect the receiver/charger to the computer

Communication between the receiver and the mouse makes use of radio waves; this means that a “line of sight” placement is not required.

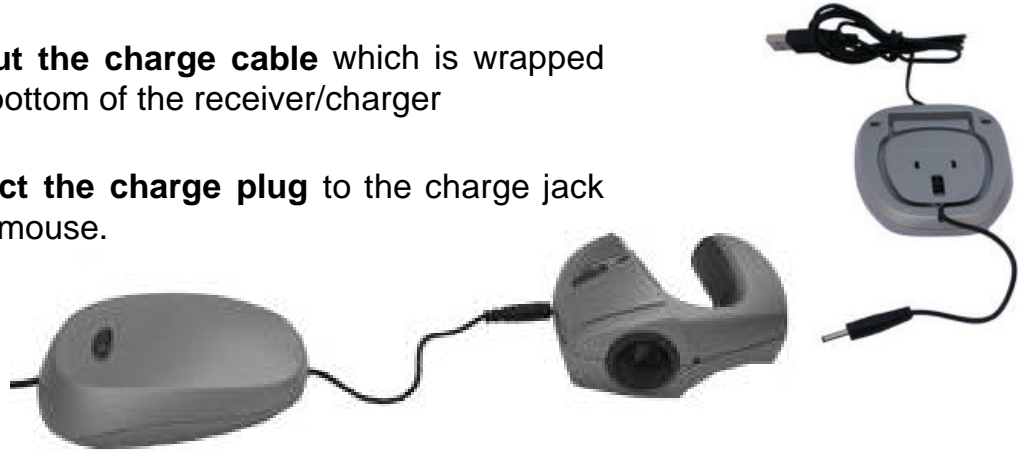
1. **Turn on the computer**
2. **Connect the receiver’s USB plug** into an available USB jack on the computer.
3. **Place the receiver** close to the area where you will use the mouse. The effective range is approx. 1,5 meters.



Step 4 – Charging the mouse

The mouse can be charged while in use; this is so the mouse can be used at all times, even when the batteries are not charged. However, we recommend always charging the mouse when it is not being used. This way, there will never be a situation where the mouse cannot be used without a cable.

1. **Pull out the charge cable** which is wrapped in the bottom of the receiver/charger
2. **Connect the charge plug** to the charge jack on the mouse.



LED indicator:

- Flashes slowly (0,5 Hz) when the mouse is charging.
- Shines steadily when the mouse is fully charged.
- Flashes rapidly (2-3 Hz) when the mouse needs to be charged.
- Is dark when the battery is OK and the mouse is not charging.

The charge time is approx. 5 hours when the batteries are exhausted. Operating time is about 15 hours when used intensively and about 1 week when used regularly. The operating time is influenced by the type of surface the mouse is used on.

Step 5 – Synchronise the mouse with the receiver

Radio synchronisation needs to be set up in order to establish communication between the receiver and the mouse. This is accomplished as described in the following steps:

1. **Hold down and let go of the synchronisation button on the receiver.** The button on the receiver will begin to flash slowly with a red light.
2. **Hold down and let go of the synchronisation button on the mouse.** The LED on the receiver will flash at faster intervals when the button is pushed. From now on the light indicator on the receiver will flash irregularly depending on the amount of data the receiver needs to process.
3. **The mouse is now ready to use!**



Usage and Handling of the Mouse

Before starting to use the mouse, it is important to have followed the installation instructions in the previous section.

The Wireless Dual Mouse™ is intended for use in the right hand or with both hands. It is possible to use the mouse in a variety of different ways; this manual describes the most common ones. Do use the mouse in other ways if this feels comfortable.

Tips and advice for better ergonomics

There is no working position or product that is ergonomically optimal in all respects. There are some working positions which are better than others, but the most important thing is to vary your working position as often as possible. Research has shown that repetitive movement over long periods of time, unsuitable work postures, bad working environments, and bad working routines may lead to physical problems such as damage to nerves, tendons and muscles. Your work posture not only has an influence on your health but also on your productivity.

You should contact a physician if you are experiencing pain, numbness, prickling sensations, weakness, swelling, cramp, heat or stiffness in hands, wrists, arms, shoulders, neck, or back. The sooner you act upon your problems, the easier it will be to remedy them.

For more information or guidance about a good working environment and ergonomics, we refer you to our web site www.perific.com or www.perific.se.

Usage of the mouse on a table or another surface

Attaching and removing the mouse cover

When operated on a table or another surface the mouse may be used with or without the cover. This depends on user preference.

Attaching the cover

1. The cover is attached by sliding it along the mouse from the side and back.
2. You will hear a click when the cover is attached.

Removing the cover

1. The cover is removed by lifting it from the back.
2. Pull the cover back and sideways while lifting.



Usage and Handling of the Mouse

Use as a traditional mouse

The Wireless Dual Mouse™ can be used just like an ordinary mouse, i.e.:

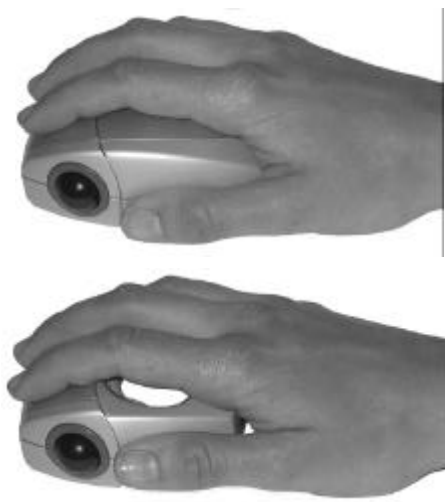
- the front left and right buttons are used to mark text and to select items on menus.
- the scroll wheel is used to scroll through documents easily
- *Note: in this mode the rear buttons will not be used.*

For a detailed description of each button's functionality, see the section Overview of mouse functionality at the beginning of this manual.

The mouse is held and used as shown at right.

Bear in mind that the mouse is intended for right-handed usage.

The Wireless Dual Mouse™ works on most surfaces but you should avoid too smooth, too transparent or too dark a surface. If you encounter problems, use a mousepad.



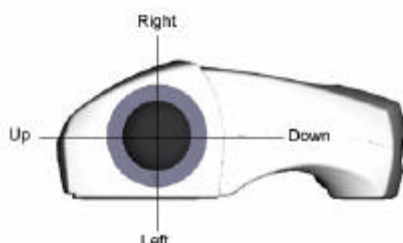
Trackball usage

The trackball can be used while the Wireless Dual Mouse™ is in place on the desktop. The functionality is identical to that described above; the difference is that instead of moving the mouse, the trackball is used when moving the cursor on the screen.

The Wireless Dual Mouse™ is held and used as shown to the right.

The trackball is thumb-controlled and the buttons and scroll wheel are operated in the same way as described above.

Trackball positioning is shown in the image below.



Note: Bear in mind that simultaneously moving the mouse and trackball will make it difficult to control the cursor on screen. Therefore, avoid moving the mouse when using the trackball.

Handheld usage of the mouse

When using the Wireless Dual Mouse™ away from the desktop, the mouse cover should not be on.

The two most common work positions are described below. There are many other work positions that can be tested and we recommend that you use the one that works best for you. Do bear in mind that varying your working position is the key to good ergonomics.

Two hand usage

This work position offers beneficial ergonomics such that the user's shoulders are in a neutral position and arms are close to the body. This manner of working is ideal for reading or collecting information.

The user is able to lean back comfortably and there is no need to bend forward to reach for a mouse.

Two-handed usage allows for working with precision while maintaining a comfortable and relaxed fashion.



1. **Place the mouse on your left hand.**



2. **Fold your hands together.**



3. **Use your right-hand thumb to control the trackball.**



4. **Use your left-hand to control the rear buttons.**



5. **Use your right hand to control the front buttons and the scroll wheel.**

Combined usage with a keyboard

When using the mouse with two hands as described above, the keyboard can be used without having to remove the Wireless Dual Mouse™ from your hand.

It is important to choose the right size of battery cover so that working this way feels comfortable.

When navigating on screen the user need only place his/her hands together and steer the trackball with the right-hand thumb. This way of working is ergonomically very beneficial because there is no need to reach for a mouse. The user's arms remain in front of and close to the body.



One-handed usage

If the user prefers, the Wireless Dual Mouse™ can also be operated with one hand. The mouse is held in the right hand.

The user is free to lean back comfortably in their chair, or even to get up and move around. This allows for the possibility of a completely unrestricted working posture.



The trackball is controlled by the thumb, and the front left button is operated by the index finger.

However, this grip does not offer a comfortable hold of the scroll wheel or right mouse button. Furthermore, the rear button cannot be used.



Additional information

Troubleshooting

Symptom	Possible cause – solution
The mouse does not work	<ul style="list-style-type: none">• The mouse is not connected properly. See section <i>Start using the mouse</i>.• The mouse is not charged. See section <i>Step 4 – Charging the mouse</i>• The receiver is placed too far away from the mouse. See section <i>Step 3 – Connect the receiver/charger to the computer</i> for correct placement.• The batteries are faulty. Switch the batteries. See section <i>Step 1 – Insert the batteries</i>• You are using the mouse on too dark or shiny a surface. Use a mouse mat.• Radio communication needs to be synchronised. See section <i>Step 5 – Synchronise the mouse with the receiver</i>.
The mouse does not charge	<ul style="list-style-type: none">• The receiver is connected to the PS/2 port. Connect the USB plug directly into the computer without the use of a PS/2-USB adapter.• The batteries are not installed. See section <i>Step 1 – Insert the batteries</i>.• The batteries are faulty. Switch the batteries. See section <i>Step 1 – Insert the batteries</i>• The computer must be switched on in order to charge the mouse.
The mouse is too slow or too fast	<ul style="list-style-type: none">• You need to alter the sensitivity at the mouse drivers. See section <i>Advanced settings</i>.
The trackball moves erratically	<ul style="list-style-type: none">• The mouse is insufficiently charged. See section <i>Step 4 – Charging the mouse</i>.• The receiver is placed too far away from the mouse. See section <i>Step 3 – Connect the receiver/charger to the computer</i> for correct placement.• The trackball needs cleaning. Remove the trackball by turning the ring around the trackball counter-clockwise. Take out the ball and clean it with a dry cloth. You can even clean the visible wheel in the area where the ball was resting. Use a small brush. Put the ball and ring back and turn the ring clockwise to tighten.

<p>The mouse does not move smoothly when used on a surface</p>	<ul style="list-style-type: none"> • The mouse is insufficiently charged. See section <i>Step 4 – Charging the mouse</i>. • The receiver is placed too far away from the mouse. See section <i>Step 3 – Connect the receiver/charger to the computer</i> for correct placement. • You are using the mouse on too dark or shiny a surface. Use a mouse mat. • Radio communication needs to be synchronised. See section <i>Step 5 – Synchronise the mouse with the receiver</i>.
<p>The mouse has a bad reach</p>	<ul style="list-style-type: none"> • The mouse is insufficiently charged; see section <i>Step 4 – Charging the mouse</i>. • The receiver is placed too far away from the mouse. See section <i>Step 3 – Connect the receiver/charger to the computer</i> for correct placement.
<p>The optics shines even though the mouse is not sitting on a surface.</p>	<ul style="list-style-type: none"> • The sensor that detects whether a mouse is lying on a surface may be dirty or blocked. Try cleaning the sensor with a small brush. • Avoid touching the optics at the bottom of the mouse with your fingers.
<p>The operating time is short</p>	<ul style="list-style-type: none"> • The batteries are faulty. Switch the batteries. See section <i>Step 1 – Insert the batteries</i>

Support

Support information can be found at www.perific.com and www.perific.se. Here you will also find contact information and other additional help and guidance. The website is updated continuously and will help you take full advantage of the Wireless Dual Mouse™.

Advanced settings

This section is intended only for advanced users who would like to reconfigure the basic settings of the mouse such as the functionality of the buttons or the sensitivity of the mouse.

In Windows click *Start* and choose *Control panel/Mouse*. Here you will find several properties you can set such as mouse button functions, speed and even acceleration. Adjust these parameters to your liking. For more information about the mouse drivers that are installed on your computer we would refer you to the manual for these drivers.

For enthusiasts there is a special mouse driver with additional functionality and configuration possibilities that can be downloaded at www.perific.com or www.perific.se. More information about mouse drivers can be found in section *Accessories*.

Technical specifications

Optical sensor	800 dpi
Trackball	400 dpi, opto-mechanic
Programmable buttons	5 (<i>a special mouse driver is needed for total configuration, see section Accessories</i>)
Rechargeable batteries	2 NiMH AAA
Operating time when fully charged	Approx. 1 week with normal usage
Charge time	Approx. 5 hours from empty to fully charged battery.
Power source	USB (<i>separate charger accessory</i>)
Radio	Reach approx. 1,5 m, 27 Mhz, 256 ID
Connection	USB (<i>PS/2 adapter accessory</i>)
Type of approval	CE and FCC
Temperature for usage	This product is specified as a consumer product for usage between a temperature interval of 0°C (32F) to 40°C (104F).

System requirements

IBM®-computer or similar

- Windows 98, Me, NT 4.0, 2000, XP
- Available USB port (*PS/2 adapter accessory*)

Macintosh®-system

- Mac OS 8.6 or later
- Available USB port

Accessories

Network charger and USB-PS/2 adapter The mouse can be connected to a PS/2 contact and charged via a wall outlet.

Customised mouse driver Mouse driver for more functionality and configuration possibilities can be downloaded at www.perific.com or www.perific.se.

For a complete accessory list, see www.perific.com or www.perific.se.

Warranty

Perific warrants this product to be free from material or functional defects at the time of original purchase, and for a two year period from that date. For the purpose of this text, and unless otherwise indicated, Perific refers to Perific AB (reg. no. 556602-8543), its subsidiaries and resellers. If at any time during the warrantee period a defect becomes apparent that is due to material or functional failure, Perific pledges to, at Perific's option, either repair or replace the faulty product with a new or equivalent model.

Perific takes no responsibility for:

1. Damages incurred by or during: delivery of the product, accidental damage, deliberate damage, modification, incorrect usage of the product, force majeure, or any other cause beyond the control of Perific, including but not limited to lightning, water, fire, public disturbance, riot, strike, war, or any other similar conflicts.
2. Damages (including, but not limited to, direct or indirect personal injury, a loss of profit, fall in production, losses of or alterations to processed information, or any other incidental or consequential damages) caused by the product or usage of the product, or on the grounds that the product cannot be used.
3. Deficient maintenance or incorrect repairs carried out by unauthorised parties.
4. Incompatibilities as a result of technological developments.
5. Defects caused by third party equipment or abnormal wear.
6. Defects caused by normal everyday wear and tear.
7. Problems caused by or resulting from upgrades, with additions or alterations to the product through use of hardware or software not manufactured by or having the written consent of Perific.

In the event that the Wireless Dual Mouse™ requires service under the warranty period, the product must be returned to the reseller where it was purchased. It must be packed in its original packaging, or in such a way that damages in transit are avoided. The original purchaser must be able to show proof of purchase, including the date of purchase, with receipt/invoice from point of purchase in order for this warranty to be valid. The warranty period will not be renewed or extended as a result of repair or replacement the product. Any exchanged or replaced defective parts will remain the property of Perific. At the end of the warranty period, any guarantee regarding exchanged or replaced parts also expires. This product cannot to be regarded as having material or functional defects if it must be rebuilt in order to be modified in accordance with national or local technical safety regulations in a country other than one in which the product was meant to be used.

Perific reserves all rights to the product, its hardware, software and trademark. Purchase of the product does not imply the right to change, disassemble, reverse engineer or in any other way use any part of the hardware or software of the product, except in the way and for the purposes permitted by law. This warranty does not affect the purchaser's rights in relation to the reseller in accordance with the purchase agreement, nor the purchaser's legal rights according to existing, mandatory rules in applicable law; the purchaser's rights are limited to those which are stated in this warranty. Perific shall not be liable for any incidental or consequential damage for breach of any expressed or implied warranty of this product.

www.perific.com
www.perific.se