

BACK BAR REFRIGERATION



Introducing the revolutionary new line
of custom refrigeration from
the industry leader in **cool**

Perlick®

CONTENTS

INTRODUCTION

History 3
 Meet the new generation..... 4
 How to customize a back bar 6

SINGLE-ZONE BACK BAR

Overview 9
 Self-Contained Single-Zone 10
 Remote Back Bar Single-Zone 12

DUAL-ZONE BACK BAR

Overview 15
 Self-Contained Dual-Zone 16

NARROW-DOOR BACK BAR

Overview 19
 Self-Contained Narrow-Door 20
 Remote Narrow-Door 22

SLIDING-DOOR BACK BAR

Overview 25
 Self-Contained Sliding-Door 26
 Remote Sliding-Door 27

PASS-THRU BACK BAR

Overview 29
 Self-Contained Pass-Thru 30
 Self-Contained Sliding-Door Pass-Thru.. 31
 Remote Pass-Thru..... 32
 Remote Sliding-Door Pass-Thru 33

DRY STORAGE

Standard Dry Storage 34
 Narrow-Door Dry Storage 35
 Pass-Thru Dry Storage 36

Options & Accessories Gallery 38

Options & Accessories Grid

Single-Zone, Dual-Zone, Narrow-Door 40

Options & Accessories Grid

Sliding-Door, Pass-Thru 42

Laminate Information 44

Warranty 46

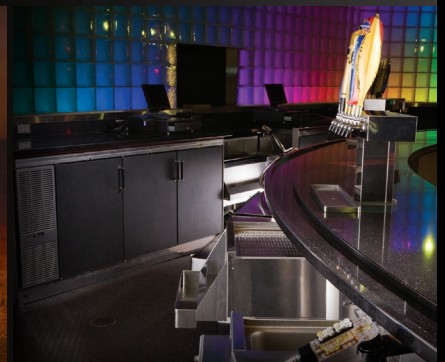
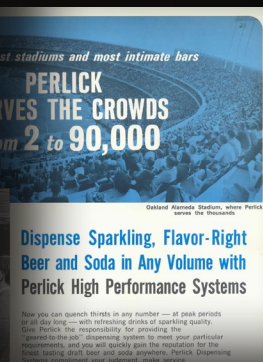


AMERICAN-MADE FOR OVER 95 YEARS

Perlick Corporation has set the standard for designing, engineering and manufacturing the highest quality bar and beverage products in the foodservice equipment industry for over 95 years. Perlick's extensive and growing portfolio of underbar, refrigeration and beverage dispensing equipment is produced in its 300,000-square-foot facility by 250-plus highly skilled and dedicated Perlick employees right here in Milwaukee, Wisconsin.

From humble beginnings producing ice-chilled cooler cabinets and keg fittings, to the hundreds of innovative award-winning products that have followed, one thing has remained the same – every Perlick product is manufactured to exacting tolerances by a hard-working, diligent and experienced team committed to high-quality craftsmanship.

While we take great pride in our heritage, our focus is on the future of our industry, bringing state-of-the-art technology and innovation in foodservice equipment with the same principles that customers have come to know and expect from Perlick.



MEET THE NEW GENERATION OF **BACK BAR REFRIGERATION**

NEW

End-wall Refrigeration
Module creates 14% increased
storage capacity

NEW

Tapping can be ordered for
any compartment



NEW

NSF-approved for
open-food storage



Refrigerant Service Valves
reduce service costs

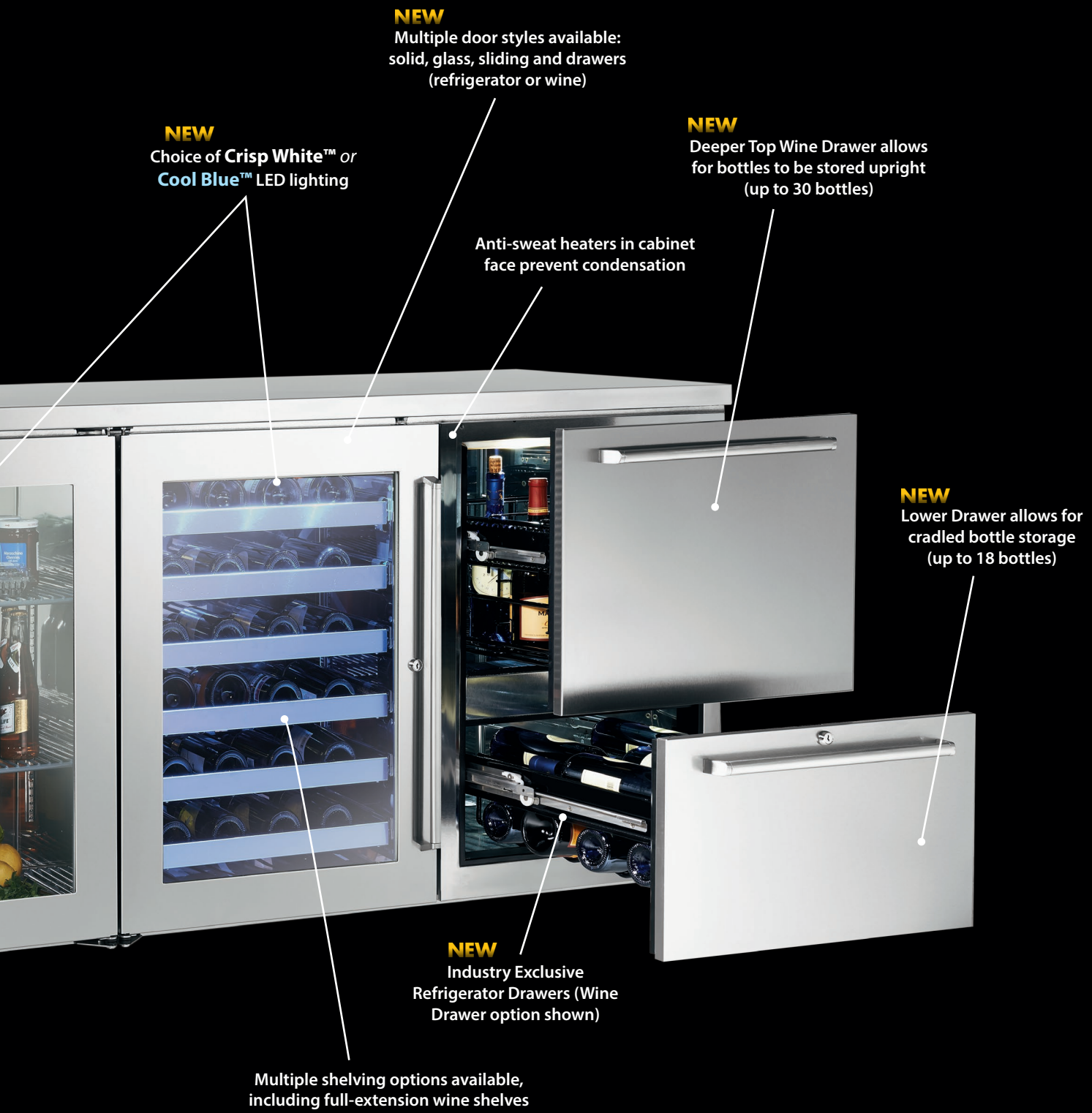
NEW

All models include state-of-
the-art NSF-approved digital
control (*self-contained models*)

NEW

Integrated locks for
increased security

Recessed floor pan



NEW
Multiple door styles available:
solid, glass, sliding and drawers
(refrigerator or wine)

NEW
Choice of **Crisp White™** or
Cool Blue™ LED lighting

NEW
Deeper Top Wine Drawer allows
for bottles to be stored upright
(up to 30 bottles)

Anti-sweat heaters in cabinet
face prevent condensation

NEW
Lower Drawer allows for
cradled bottle storage
(up to 18 bottles)

NEW
Industry Exclusive
Refrigerator Drawers (Wine
Drawer option shown)

Multiple shelving options available,
including full-extension wine shelves

INTRODUCING ...

A NEW GENERATION OF BACK BAR EQUIPMENT FROM THE EXPERTS IN REFRIGERATION

Perlick has raised the bar yet again with our newly reengineered back bar refrigeration line up. Expertly crafted as always to deliver the quality you've come to expect from Perlick, these new models move way beyond basic with thoughtful amenities you just can't get from other back bar equipment suppliers. Each unit is fully customizable to accommodate virtually any bar configuration.

Available in single-zone, dual-zone, narrow-door, pass-thru and sliding-door back bar models, each unit starts with a base model and is designed based on your specified options. You have full control of your cabinet's look and function. The following is a step-by-step illustration on how to build a back bar to meet your every want and need.

CHOOSE YOUR MODEL

BBS60 – Self-Contained Single-zone 2-door Back Bar Refrigerator



120V **230V**

1. CHOOSE VOLTAGE

120V

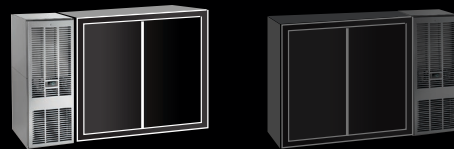
230V

2. CHOOSE YOUR TEMPERATURE

Standard Refrigerator (temp)

Wine Temp. Control – WHITE (temp)

Wine Temp. Control – RED (temp)



3. CHOOSE YOUR TOP

Stainless Steel

Laminate

Tapping Stainless Steel

4. CONDENSING UNIT LOCATION

Left Position

Right Position



5. CHOOSE LED COLORED LIGHTS

Crisp White™

Cool Blue™

6. GRILLE FINISH (FRONT)

Black pre-coat

Stainless steel

Laminate over black

7. COMPARTMENT ONE/TWO OPTIONS

Solid Black/Field Laminate	Drawers, Refrigerator Black /Field Laminate
Solid Stainless	
Solid Laminate	Drawers, Refrigerator Stainless Steel
Glass w/Black/ Field Laminate Frame	Drawers, Refrigerator Laminate
<input checked="" type="checkbox"/> Glass w/Stainless Steel Frame (L)	Drawers, Wine Black/Field Laminate
Glass w/Laminate Frame	<input checked="" type="checkbox"/> Drawers, Wine Stainless Steel (R)
	Drawers, Wine Laminate

8. DOOR HINGING OPTIONS

<i>Left Compartment</i>	<i>Right Compartment</i>
<input checked="" type="checkbox"/> None (Drawers Only)	<input checked="" type="checkbox"/> None (Drawers Only)
<input checked="" type="checkbox"/> Left	Left
Right	Right

9. SHELVING OPTIONS

<input checked="" type="checkbox"/> None (Drawers) (R)
Standard Wire Shelving
Divider Shelving
Standard Cut Out Shelves
Divider Cut Out Shelves
Wine Racks
<input checked="" type="checkbox"/> Full-extension Wine Racks (L)

10. FINISH ENDS

None
Laminate – Left
Laminate – Right
Laminate – Both
Stainless Steel End Right
Stainless Steel End Left
<input checked="" type="checkbox"/> Stainless Steel End Both



With the options chosen above, the customer would receive a 2-door, self-contained, stainless steel cabinet programmed to a single-zone white wine temperature. The left compartment is a glass door with left hinge and features five (5) full-extension wine shelves. The right compartment features wine drawers that can accommodate upright bottles and cradled bottle storage below.

Turn to page 38 to see all of the options and accessories listed above, as well as additional ones for units that include tapping.



BMO Harris Bradley Center Milwaukee, Wisconsin

SINGLE-ZONE

BACK BAR REFRIGERATORS

- Available in 1-, 2-, 3- or 4-door (36", 60", 84" or 108") self-contained models or 1-, 2-, 3- or 4-door (24", 48", 72" or 96") remote models
- All models are ANSI/NSF #7 approved for open food storage and are UL listed for the U.S. and Canada
- Choice of temperature range; Refrigerator (34°F–42°F) or Wine (40°F–65°F). Factory set to approximately 38°F for Refrigerator, 45°F for White Wine and 60°F for Red Wine
- Industry Exclusive refrigerator and wine drawers available on all models (excluding 36" remote refrigerators)
- The entire back bar line can be configured to accommodate tapping



BBS84 – Wine Center with two (2) stainless steel glass doors, full-extension wine shelves and wine drawers (*shown*)



BBR48 – Refrigerator with stainless steel glass doors (2), standard wine shelves (*shown*)

SINGLE-ZONE

SELF-CONTAINED BACK BAR REFRIGERATORS



BBS36 – Wine Drawers (shown)



BBS60 – Refrigerator with two (2) stainless steel glass doors, standard wire shelving (shown)

BBS36



Specifications

Exterior Length 36" (91.44 cm)
Exterior Depth 24.75" (62.87 cm)
Exterior Height 34.56" (87.78 cm)
Net Capacity 7.4 cu. ft. (209.54L)
Number of Compartments 1
Horsepower 1/5
Amps 3.2

NEMA 5-15 Cord Plug Type (8' length)

Options

Tapping Available Yes
Drawers Available Yes
Electrical Supply 120 VAC/60 Hz/1 Ph or 230 VAC/50 Hz/1 Ph
LED Light Options Crisp White™ or Cool Blue™

Door / Drawer Options

Solid (black, stainless, laminated, field laminated)
Glass (black, stainless, laminated, field laminated)
Drawers, Refrigerator (black, stainless, laminate, field laminated)
Drawers, Wine (black, stainless, laminated, field laminated)

BBS60



Specifications

Exterior Length 60" (152.40 cm)
Exterior Depth 24.75" (62.87 cm)
Exterior Height 34.56" (87.78 cm)
Net Capacity 16.0 cu. ft. (453.07L)
Number of Compartments 2
Horsepower 1/4
Amps 5.5

NEMA 5-15 Cord Plug Type (8' length)

Options

Tapping Available Yes
Drawers Available Yes
Electrical Supply 120 VAC/60 Hz/1 Ph or 230 VAC/50 Hz/1 Ph
LED Light Options Crisp White™ or Cool Blue™

Door / Drawer Options

Solid (black, stainless, laminated, field laminated)
Glass (black, stainless, laminated, field laminated)
Drawers, Refrigerator (black, stainless, laminate, field laminated)
Drawers, Wine (black, stainless, laminated, field laminated)



BBS84 – Wine Center with two (2) stainless steel glass doors, full-extension wine shelves and wine drawers (shown)



BBS108 – Refrigerator with solid stainless doors (shown)

BBS84



Specifications

Exterior Length 84" (213.36 cm)
Exterior Depth 24.75" (62.87 cm)
Exterior Height 34.56" (87.78 cm)
Net Capacity 24.8 cu. ft. (702.26L)
Number of Compartments 3
Horsepower 1/3
Amps 6.3

NEMA 5-15 Cord Plug Type (8' length)

Options

Tapping Available Yes
Drawers Available Yes
Electrical Supply 120 VAC/60 Hz/1 Ph or 230 VAC/50 Hz/1 Ph
LED Light Options Crisp White™ or Cool Blue™

Door / Drawer Options

Solid (black, stainless, laminated, field laminated)
Glass (black, stainless, laminated, field laminated)
Drawers, Refrigerator (black, stainless, laminate, field laminated)
Drawers, Wine (black, stainless, laminate, field laminated)

BBS108



Specifications

Exterior Length 108" (274.32 cm)
Exterior Depth 24.75" (62.87 cm)
Exterior Height 34.56" (87.78 cm)
Net Capacity 33.5 cu. ft. (948.61L)
Number of Compartments 4
Horsepower 1/3
Amps 6.3

NEMA 5-15 Cord Plug Type (8' length)

Options

Tapping Available Yes
Drawers Available Yes
Electrical Supply 120 VAC/60 Hz/1 Ph or 230 VAC/50 Hz/1 Ph
LED Light Options Crisp White™ or Cool Blue™

Door / Drawer Options

Solid (black, stainless, laminated, field laminated)
Glass (black, stainless, laminate, field laminated)
Drawers, Refrigerator (black, stainless, laminate, field laminated)
Drawers, Wine (black, stainless, laminate, field laminate)

SINGLE-ZONE

REMOTE BACK BAR REFRIGERATORS



BBR24 – Refrigerator with stainless steel glass door, standard wire shelving (shown)



BBR48 – Refrigerator with solid stainless steel doors (shown)

BBR24



Specifications

Exterior Length 24" (60.96 cm)
Exterior Depth 24.75" (62.87 cm)
Exterior Height 34.56" (87.78 cm)
Net Capacity 7.0 cu. ft. (198.22L)
Number of Compartments 1
Amps 1.1
Electrical Connection Hard-wired
Evaporator Capacity - Remotes 900 Btu/Hr*

Options

Tapping Available Yes
Drawers Available No
Electrical Supply 120 VAC/60 Hz/1 Ph or 230 VAC/50 Hz/1 Ph
LED Light Options Crisp White™ or Cool Blue™

Door Options

Solid (black, stainless, laminated, field laminated)
Glass (black, stainless, laminated, field laminated)

BBR48



Specifications

Exterior Length 48" (121.92 cm)
Exterior Depth 24.75" (62.87 cm)
Exterior Height 34.56" (87.78 cm)
Net Capacity 15.3 cu. ft. (433.25L)
Number of Compartments 2
Amps 1.6
Electrical Connection Hard-wired
Evaporator Capacity - Remotes 1900 Btu/Hr*

Options

Tapping Available Yes
Drawers Available No
Electrical Supply 120 VAC/60 Hz/1 Ph or 230 VAC/50 Hz/1 Ph
LED Light Options Crisp White™ or Cool Blue™

Door Options

Solid (black, stainless, laminated, field laminated)
Glass (black, stainless, laminated, field laminated)



BBR72 – Refrigerator with three (3) stainless steel glass doors, standard wire shelving (shown)

BBR72



Specifications

Exterior Length 72" (182.88 cm)
Exterior Depth 24.75" (62.87 cm)
Exterior Height 34.56" (87.78 cm)
Net Capacity 23.9 cu. ft. (676.77L)
Number of Compartments 3
Amps 2
Electrical Connection Hard-wired
Evaporator Capacity – Remotes 2300 Btu/Hr*

Options

Tapping Available Yes
Drawers Available No
Electrical Supply 120 VAC/60 Hz/1 Ph or 230 VAC/50 Hz/1 Ph
LED Light Options Crisp White™ or Cool Blue™

Door Options

Solid (black, stainless, laminated, field laminated)
Glass (black, stainless, laminated, field laminated)



BBR96 – Refrigerator with two (2) solid stainless doors and two (2) stainless steel glass doors, standard wire shelving (shown)

BBR96



Specifications

Exterior Length 96" (243.84 cm)
Exterior Depth 24.75" (62.87 cm)
Exterior Height 34.56" (87.78 cm)
Net Capacity 32.6 cu. ft. (923.13L)
Number of Compartments 4
Amps 2.5
Electrical Connection Hard-wired
Evaporator Capacity – Remotes 2300 Btu/Hr*

Options

Tapping Available Yes
Drawers Available No
Electrical Supply 120 VAC/60 Hz/1 Ph or 230 VAC/50 Hz/1 Ph
LED Light Options Crisp White™ or Cool Blue™

Door Options

Solid (black, stainless, laminated, field laminated)
Glass (black, stainless, laminated, field laminated)

WINE DRAWERS

by



WINE  certified



- Deeper top drawer allows for upright storage of up to 30 open bottles*
- Lower drawer offers proper storage for up to 18 cradled bottles*
- Available in red and/or white wine temperature single-zone or dual-zone models

**based on 750 ml., 3-inch diameter bottles*

DUAL-ZONE

BACK BAR REFRIGERATORS

- Available in 2-door (60") self-contained model
- Industry Exclusive wine drawers – Deeper top drawer allows for upright storage of open bottles. Lower drawer provides additional storage for cradled bottles.
- Industry Exclusive full-extension wine shelves with stainless steel fronts
- All models are ANSI/NSF #7 approved for open food storage and are UL listed for the U.S. and Canada.
- Choice of temperature range; Refrigerator (34°F–42°F) or Wine (40°F–65°F). Factory set to approximately 38°F for Refrigerator, 45°F for White Wine and 60°F for Red Wine
- Wine Certified wine dispensing kit available



DZS60 Dual-Zone Wine Center w/ Wine Drawers and wine dispensing *(shown)*



DZS60 Dual-Zone Wine Center with stainless steel glass door, full-extension wine shelves and Wine Drawers *(shown)*

DUAL-ZONE

SELF-CONTAINED BACK BAR REFRIGERATORS



DZS60 – Dual-Zone Refrigerator with stainless steel glass door and wine dispensing (*shown*)

DZS60



Specifications

Exterior Length 60" (152.40 cm)

Exterior Depth 24.75" (62.87 cm)

Exterior Height 34.56" (87.78 cm)

Net Capacity 7.4 cu. ft. (209.54L)

Number of Compartments 2

Horsepower 1/4

Amps 5.5

 NEMA 5-15 Cord Plug Type (8' length)

Options

Tapping Available Yes

Drawers Available Yes

Electrical Supply 120 VAC/60 Hz/1 Ph

LED Light Options Crisp White™ or Cool Blue™

Door / Drawer Options

Solid (black, stainless, laminated, field laminated)

Glass (black, stainless, laminated, field laminated)

Drawers, Refrigerator (black, stainless, laminated, field laminated)

Drawers, Wine (black, stainless, laminated, field laminate)



Our thinking on **illumination** has evolved.

LED lighting is now a standard feature on all new Perlick back bar refrigerators. Available in **Crisp White™** or **Cool Blue™**, these lights provide exceptional clarity and increase the visual impact of your stocked product.

- LED lighting is 50% *more efficient**
- LED lighting has a 20% *longer life**



Crisp White™



Cool Blue™
(shown below)

* When compared to compact fluorescent bulbs



DUAL-ZONE WINE CENTER

INDUSTRY EXCLUSIVE Dual-zone wine center properly *stores* and *dispenses* wine.

WINE certified



DZS60 Wine Center with stainless steel glass door, full-extension shelves (left) and solid stainless door w/ single-faucet wine dispensing (right)

WINE certified



DZS60 Wine Center with Wine Drawers (left) and solid stainless door w/ single-faucet wine dispensing (right)

Now you can properly store and dispense wine at two separate temperatures in the same cabinet. Customize your dual-zone wine center with options to suit your specific needs:

- Wine drawers
- Solid doors with full-extension wine shelves
- Stainless glass doors with full-extension wine shelves
- 1-, 2-, 3-, 4- or 5-faucet wine tapping

Perlick®

NARROW-DOOR

BACK BAR REFRIGERATORS

- Available in 1-, 2-, 3- or 4-door (32", 52", 72" or 92") self-contained models or 2-, 3- or 4-door (40", 60" or 80") remote models
- Narrow-door unit doors are 4" narrower than the standard unit to accommodate tight working spaces behind the bar
- All models are ANSI/NSF #7 approved for open food storage and are UL listed for the U.S. and Canada.
- Choice of temperature range; Refrigerator (34°F–42°F) or Wine (40°F–65°F). Factory set to approximately 38°F for Refrigerator, 45°F for White Wine and 60°F for Red Wine
- All refrigerator cabinets can be configured to accommodate tapping



BBSN32 – Refrigerator with solid stainless door *(shown)*



BBRN80 – Refrigerator with two (2) stainless glass doors, standard wire shelving and two (2) solid stainless doors *(shown)*

NARROW-DOOR

SELF-CONTAINED BACK BAR REFRIGERATORS



BBSN32 – Refrigerator with solid stainless steel door (shown)



BBSN52 – Refrigerator with stainless steel glass doors (2), standard wire shelving (shown)

BBSN32



Specifications

Exterior Length 32" (81.28 cm)
Exterior Depth 24.75" (62.87 cm)
Exterior Height 34.56" (87.78 cm)
Net Capacity 6.0 cu. ft. (169.90 L)
Number of Compartments 1
Horsepower 1/5
Amps 3.2

NEMA 5-15 Cord Plug Type (8' length)

Options

Tapping Available Yes
Drawers Available No
Electrical Supply 120 VAC/60 Hz/1 Ph or 230 VAC/50 Hz/1 Ph
LED Light Options Crisp White™ or Cool Blue™

Door Options

Solid (black, stainless, laminated, field laminated)
Glass (black, stainless, laminated, field laminated)

BBSN52



Specifications

Exterior Length 52" (132.08 cm)
Exterior Depth 24.75" (62.87 cm)
Exterior Height 34.56" (87.78 cm)
Net Capacity 13.3 cu. ft. (376.61 L)
Number of Compartments 2
Horsepower 1/4
Amps 5.5

NEMA 5-15 Cord Plug Type (8' length)

Options

Tapping Available Yes
Drawers Available No
Electrical Supply 120 VAC/60 Hz/1 Ph or 230 VAC/50 Hz/1 Ph
LED Light Options Crisp White™ or Cool Blue™

Door Options

Solid (black, stainless, laminated, field laminated)
Glass (black, stainless, laminated, field laminated)



BBSN72 – Refrigerator with three (3) solid stainless steel glass doors (shown)

BBSN72



Specifications

Exterior Length 72" (182.88 cm)
Exterior Depth 24.75" (62.87 cm)
Exterior Height 34.56" (87.78 cm)
Net Capacity 20.6 cu. ft. (583.33 L)
Number of Compartments 3
Horsepower 1/3
Amps 6.3

NEMA 5-15 Cord Plug Type (8' length)

Options

Tapping Available Yes
Drawers Available No
Electrical Supply 120 VAC/60 Hz/1 Ph or 230 VAC/50 Hz/1 Ph
LED Light Options Crisp White™ or Cool Blue™

Door Options

Solid (black, stainless, laminated, field laminated)
Glass (black, stainless, laminated, field laminated)



BBSN92 – Refrigerator with four (4) stainless steel glass doors (shown)

BBSN92



Specifications

Exterior Length 92" (233.68 cm)
Exterior Depth 24.75" (62.87 cm)
Exterior Height 34.56" (87.78 cm)
Net Capacity 27.8 cu. ft. (787.21 L)
Number of Compartments 4
Horsepower 1/3
Amps 6.3

NEMA 5-15 Cord Plug Type (8' length)

Options

Tapping Available Yes
Drawers Available No
Electrical Supply 120 VAC/60 Hz/1 Ph or 230 VAC/50 Hz/1 Ph
LED Light Options Crisp White™ or Cool Blue™

Door Options

Solid (black, stainless, laminated, field laminated)
Glass (black, stainless, laminated, field laminated)

NARROW-DOOR

REMOTE BACK BAR REFRIGERATORS



BBRN40 – Refrigerator with two (2) stainless glass doors, standard wire shelving (shown)



BBRN60 – Refrigerator with three (3) solid stainless doors (shown)

BBRN40



BBRN60



Specifications

Exterior Length 40" (101.60 cm)
Exterior Depth 24.75" (62.87 cm)
Exterior Height 34.56" (87.78 cm)
Net Capacity 12.0 cu. ft. (339.80 L)
Number of Compartments 2
Amps 1.6
Electrical Connection Hard-wired
Evaporator Capacity – Remotes 1,900 Btu/Hr*

Options

Tapping Available Yes
Drawers Available No
Electrical Supply 120 VAC/60 Hz/1 Ph or 230 VAC/50 Hz/1 Ph
LED Light Options Crisp White™ or Cool Blue™

Door Options

Solid (black, stainless, laminated, field laminated)
Glass (black, stainless, laminated, field laminated)

Specifications

Exterior Length 60" (152.40 cm)
Exterior Depth 24.75" (62.87 cm)
Exterior Height 34.56" (87.78 cm)
Net Capacity 19.0 cu. ft. (538.02 L)
Number of Compartments 3
Amps 1.6
Electrical Connection Hard-wired
Evaporator Capacity – Remotes 2,300 Btu/Hr*

Options

Tapping Available Yes
Drawers Available No
Electrical Supply 120 VAC/60 Hz/1 Ph or 230 VAC/50 Hz/1 Ph
LED Light Options Crisp White™ or Cool Blue™

Door Options

Solid (black, stainless, laminated, field laminated)
Glass (black, stainless, laminate, field laminated)



BBRN80 – Refrigerator with two (2) stainless steel glass doors and two (2) solid stainless steel doors (shown)

BBRN80



Specifications

Exterior Length 80" (203.20 cm)
Exterior Depth 24.75" (62.87 cm)
Exterior Height 34.56" (87.78 cm)
Net Capacity 26.8 cu. ft. (758.89 L)
Number of Compartments 4
Amps 2.5
Electrical Connection Hard-wired
Evaporator Capacity – Remotes 2,300 Btu/Hr*

Options

Tapping Available Yes
Drawers Available No
Electrical Supply 120 VAC/60 Hz/1 Ph or 230 VAC/50 Hz/1 Ph
LED Light Options Crisp White™ or Cool Blue™

Door Options

Solid (black, stainless, laminated, field laminated)
Glass (black, stainless, laminated, field laminated)

WHAT IS END-WALL REFRIGERATION?

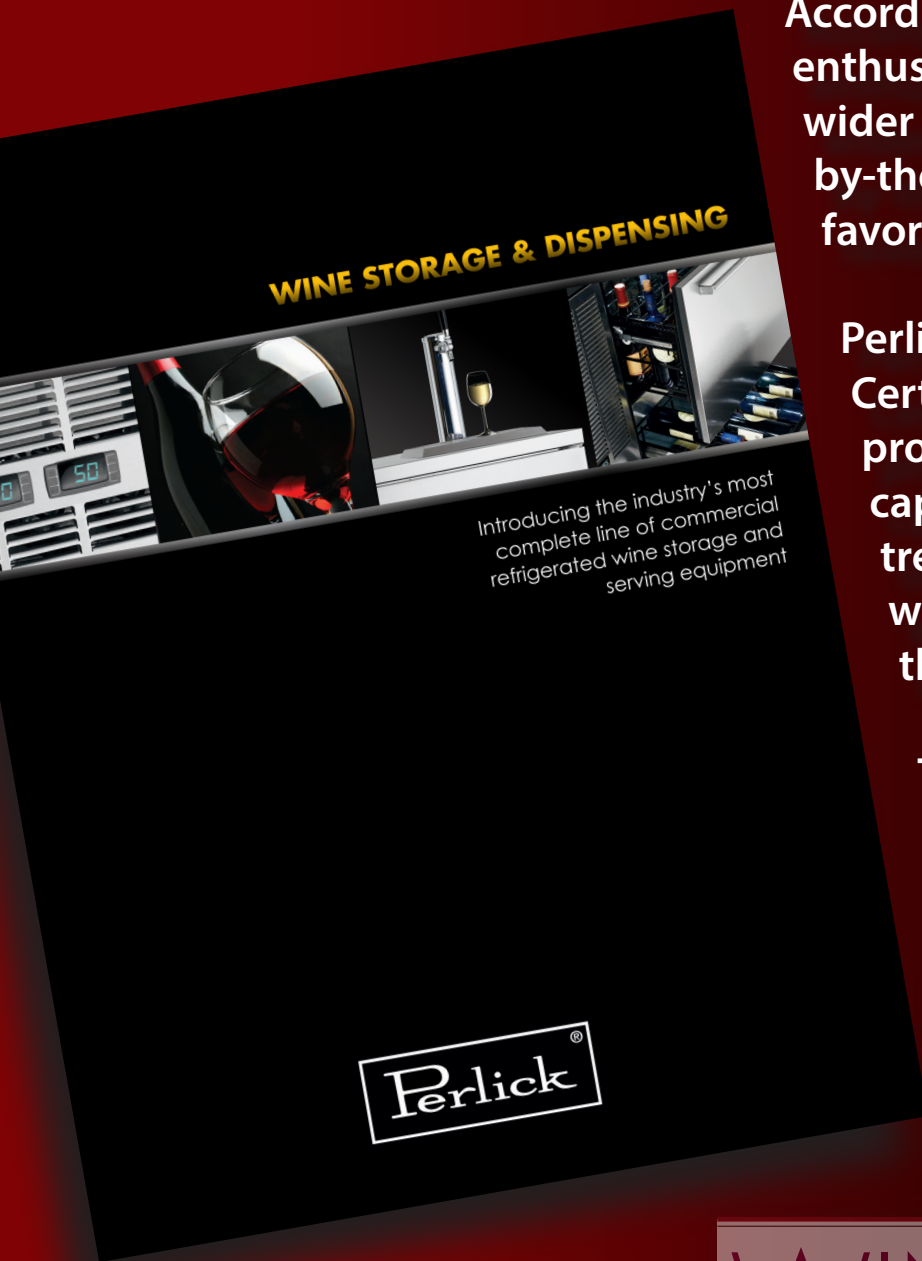


Perlick's redesigned back bar refrigerators feature end-wall refrigeration, which **increases cabinet capacity by 14%**. All of the refrigeration components are confined to one compact module, which can be ordered with **left or right placement on the cabinet**. Should you need service or replacement, you'll save money by having the **ability to repair or replace just the module**.

From the leaders in wine storage and dispensing ...



WINE DISPENSING GUIDE



According to experts, wine enthusiasts are demanding a wider variety of high-end, wine-by-the-glass choices from their favorite bars and restaurants.

Perlick's lineup of Wine Certified storage and serving products will help you capitalize on this growing trend in unique ways you won't see anywhere else in the industry.

To learn more, check out our new **Wine Storage and Dispensing Guide** to see our entire line of Wine Certified products. Visit perlick.com to download a copy today.

WINE  certified

SLIDING DOOR

BACK BAR REFRIGERATORS

- Available in 2- or 4-door (60" or 108") self-contained models or 2- or 4-door (48" or 96") remote models.
- Also available in pass-thru models (60" self-contained and 48" remote); see pages 31 and 33 for more information.
- Sliding doors are self-closing, and can be propped open for easy stocking
- All models are ANSI/NSF #7 approved for open food storage and are UL listed for the U.S. and Canada
- Choice of temperature range; Refrigerator (34°F–42°F) or Wine (40°F–65°F). Factory set to approximately 38°F for Refrigerator, 45°F for White Wine and 60°F for Red Wine



SDBS108 – Refrigerator with four (4) glass sliding doors, standard wire shelving (*shown*)



SDBR48 – Refrigerator with two (2) glass sliding doors, standard wire shelving (*shown*)

SLIDING DOOR

SELF-CONTAINED BACK BAR REFRIGERATORS



SDBS60 – Refrigerator with two (2) glass sliding doors, standard wire shelving (shown)



SDBS108 – Refrigerator with two (2) glass sliding doors, standard wire shelving (shown with Cool Blue™ LED lighting)

SDBS60



Specifications

Exterior Length 60" (152.40 cm)
Exterior Depth 24.75" (62.87 cm)
Exterior Height 34.56" (87.78 cm)
Net Capacity 14.8 cu. ft. (419.09 L)
Number of Compartments 2
Horsepower 1/4
Amps 5.5

NEMA 5-15 Cord Plug Type (8' length)

Options

Tapping Available No
Drawers Available No
Electrical Supply 120 VAC/60 Hz/1 Ph or 230 VAC/50 Hz/1 Ph
LED Light Options Crisp White™ or Cool Blue™

SDBS108



Specifications

Exterior Length 108" (274.32 cm)
Exterior Depth 24.75" (62.87 cm)
Exterior Height 34.56" (87.78 cm)
Net Capacity 30.9 cu. ft. (874.99 L)
Number of Compartments 4
Horsepower 1/3
Amps 6.3

NEMA 5-15 Cord Plug Type (8' length)

Options

Tapping Available No
Drawers Available No
Electrical Supply 120 VAC/60 Hz/1 Ph or 230 VAC/50 Hz/1 Ph
LED Light Options Crisp White™ or Cool Blue™

SLIDING DOOR

REMOTE BACK BAR REFRIGERATORS



SDBR48 – Refrigerator with two (2) glass sliding doors, standard wire shelving (shown)



SDBR96 – Refrigerator with four (4) glass sliding doors, standard wire shelving (shown)

SDBR48



Specifications

Exterior Length 48" (121.92 cm)
Exterior Depth 24.75" (62.87 cm)
Exterior Height 34.56" (87.78 cm)
Net Capacity 14.8 cu. ft. (419.09 L)
Number of Compartments 2
Amps 2
Electrical Connection Hard-wired
Evaporator Capacity – Remotes 2,300 Btu/Hr*

Options

Tapping Available No
Drawers Available No
Electrical Supply 120 VAC/60 Hz/1 Ph or 230 VAC/50 Hz/1 Ph
LED Light Options Crisp White™ or Cool Blue™

SDBR96



Specifications

Exterior Length 96" (243.84 cm)
Exterior Depth 24.75" (62.87 cm)
Exterior Height 34.56" (87.78 cm)
Net Capacity 30.9 cu. ft. (874.99 L)
Number of Compartments 4
Amps 2
Electrical Connection Hard wired
Evaporator Capacity – Remotes 2,300 Btu/Hr*

Options

Tapping Available No
Drawers Available No
Electrical Supply 120 VAC/60 Hz/1 Ph or 230 VAC/50 Hz/1 Ph
LED Light Options Crisp White™ or Cool Blue™



NSF APPROVED
for open-food storage



Perlick's entire line of back bar refrigerators
are NSF approved for open-food storage.



PASS-THRU

BACK BAR REFRIGERATORS

- Provides easy access from both sides and are offered in glass swing door or sliding doors
- Doors on Sliding Door Pass-Thru models are self-closing and can be propped open for easy stocking
- All models are ANSI/NSF #7 approved for open-food storage and are UL listed for the U.S. and Canada
- Choice of temperature range; Refrigerator (34°F–42°F) or Wine (40°F–65°F). Factory set to approximately 38°F for Refrigerator, 45°F for White Wine and 60°F for Red Wine



PTS84 – Refrigerator with three (3) stainless steel glass doors, standard wire shelving (*shown*)



SDPR48 – Refrigerator with two (2) glass sliding doors (per side), standard wire shelving (*shown*)

PASS-THRU

SELF-CONTAINED BACK BAR REFRIGERATORS



PTS36 – Refrigerator with stainless steel glass door, standard wire shelving (shown)



PTS60 – Refrigerator with two (2) stainless steel glass doors, standard wire shelving (shown)

PTS36



Specifications

Exterior Length 36" (91.44 cm)
Exterior Depth 24.75" (62.87 cm)
Exterior Height 34.56" (87.78 cm)
Net Capacity 8.0 cu. ft. (226.53 L)
Number of Compartments 2
Horsepower 1/5
Amps 3.2
ⓘ NEMA 5-15 Cord Plug Type (8' length)

Options

Tapping Available Yes
Drawers Available No
Electrical Supply 120 VAC/60 Hz/1 Ph or 230 VAC/50 Hz/1 Ph
LED Light Options Crisp White™ or Cool Blue™

Door Options

Solid (black, stainless, laminated, field laminated)
Glass (black, stainless, laminated, field laminated)

PTS60



Specifications

Exterior Length 60" (152.40 cm)
Exterior Depth 24.75" (62.87 cm)
Exterior Height 34.56" (87.78 cm)
Net Capacity 17.4 cu. ft. (492.71 L)
Number of Compartments 4
Horsepower 1/4
Amps 5.5
ⓘ NEMA 5-15 Cord Plug Type (8' length)

Options

Tapping Available Yes
Drawers Available No
Electrical Supply 120 VAC/60 Hz/1 Ph or 230 VAC/50 Hz/1 Ph
LED Light Options Crisp White™ or Cool Blue™

Door Options

Solid (black, stainless, laminated, field laminated)
Glass (black, stainless, laminated, field laminated)



PTS84 – Refrigerator with two (2) stainless steel glass doors, standard wire shelving (shown)

PTS84



SDPS60 – Refrigerator with glass sliding doors (per side), standard wire shelving (shown)

SDPS60



Specifications

Exterior Length 84" (213.36 cm)
Exterior Depth 24.75" (62.87 cm)
Exterior Height 34.56" (87.78 cm)
Net Capacity 26.7 cu. ft. (756.06 L)
Number of Compartments 6
Horsepower 1/3
Amps 6.3

NEMA 5-15 Cord Plug Type (8' length)

Options

Tapping Available Yes
Drawers Available No
Electrical Supply 120 VAC/60 Hz/1 Ph or 230 VAC/50 Hz/1 Ph
LED Light Options Crisp White™ or Cool Blue™

Door Options

Solid (black, stainless, laminated, field laminated)
Glass (black, stainless, laminated, field laminated)

Specifications

Exterior Length 60" (152.40 cm)
Exterior Depth 24.75" (62.87 cm)
Exterior Height 34.56" (87.78 cm)
Net Capacity 14.8 cu. ft. (419.09 L)
Number of Compartments 2
Horsepower 1/4
Amps 5.5

NEMA 5-15 Cord Plug Type (8' length)

Options

Tapping Available No
Drawers Available No
Electrical Supply 120 VAC/60 Hz/1 Ph or 230 VAC/50 Hz/1 Ph
LED Light Options Crisp White™ or Cool Blue™

PASS-THRU

REMOTE BACK BAR REFRIGERATORS



PTR48 – Refrigerator with two (2) stainless steel glass doors (per side), standard wire shelving (shown)



PTR72 – Refrigerator with three (3) stainless steel glass doors (per side), standard wire shelving (shown)

PTR48



Specifications

Exterior Length 48" (121.92 cm)
Exterior Depth 24.75" (62.87 cm)
Exterior Height 34.56" (87.78 cm)
Net Capacity 16.6 cu. ft. (470.06 L)
Number of Compartments 4
Amps 1.6
Electrical Connection Hard-wired
Evaporator Capacity – Remotes 1,900 Btu/Hr*

Options

Tapping Available No
Drawers Available No
Electrical Supply 120 VAC/60 Hz/1 Ph
LED Light Options Crisp White™ or Cool Blue™

Door Options

Solid (black, stainless, laminated, field laminated)
Glass (black, stainless, laminated, field laminated)

PTR72



Specifications

Exterior Length 72" (182.88 cm)
Exterior Depth 24.75" (62.87 cm)
Exterior Height 34.56" (87.78 cm)
Net Capacity 25.7 cu. ft. (727.74 L)
Number of Compartments 6
Amps 2
Electrical Connection Hard-wired
Evaporator Capacity – Remotes 2,300 Btu/Hr*

Options

Tapping Available Yes (Right Compartment Only)
Drawers Available No
Electrical Supply 120 VAC/60 Hz/1 Ph
LED Light Options Crisp White™ or Cool Blue™

Door Options

Solid (black, stainless, laminated, field laminated)
Glass (black, stainless, laminated, field laminated)



SDPR48 – Refrigerator with two (2) glass sliding doors (per side), standard wire shelving (shown)

SDPR48



Specifications

Exterior Length 60" (152.40 cm)
Exterior Depth 24.75" (62.87 cm)
Exterior Height 34.56" (87.78 cm)
Net Capacity 14.8 cu. ft. (419.09 L)
Number of Compartments 2
Amps 1.6
Electrical Connection Hard-wired
Evaporator Capacity – Remotes 1,900 Btu/Hr*

Options

Tapping Available No
Drawers Available No
Electrical Supply 120 VAC/60 Hz/1 Ph
LED Light Options Crisp White™ or Cool Blue™



Perlick was voted **Best in Class** by Consultants for 2012 by *FES Magazine*.

Visit perlick.com to see for yourself why the best in the industry prefer Perlick.



DRY STORAGE – STANDARD DOOR



DB24 – Drawers (shown)



DB72 – 3-door (shown)



DB48 – 2-door (shown)



DB96 – 4-door (shown)

DB24



Specifications

Exterior Length 24" (60.96 cm)
Exterior Depth 24.75" (62.87 cm)
Exterior Height 34.56" (87.78 cm)
Net Capacity 7.4 cu. ft. (209.54 L)
Number of Compartments 1

DB72



Specifications

Exterior Length 72" (182.88 cm)
Exterior Depth 24.75" (62.87 cm)
Exterior Height 34.56" (87.78 cm)
Net Capacity 23.9 cu. ft. (676.77 L)
Number of Compartments 3

DB48



Specifications

Exterior Length 48" (121.92 cm)
Exterior Depth 24.75" (62.87 cm)
Exterior Height 34.56" (87.78 cm)
Net Capacity 15.3 cu. ft. (433.25 L)
Number of Compartments 2

DB96



Specifications

Exterior Length 96" (243.84 cm)
Exterior Depth 24.75" (62.87 cm)
Exterior Height 34.56" (87.78 cm)
Net Capacity 32.6 cu. ft. (923.13 L)
Number of Compartments 4

ALL MODELS

Door / Drawer Options

Solid (black, stainless, laminated, field laminated)
Glass (black, stainless, laminated, field laminated)
Drawers, Refrigerator (black, stainless, laminated, field laminated)
Drawers, Wine (black, stainless, laminated, field laminated)

DRY STORAGE – NARROW DOOR



DBN20 – Single-door (shown)



DBN60 – 3-door (shown)



DBN40 – 2-door (shown)



DBN80 – 4-door (shown)

DBN20



Specifications

Exterior Length 20" (50.80 cm)
Exterior Depth 24.75" (62.87 cm)
Exterior Height 34.56" (87.78 cm)
Net Capacity 5.0 cu. ft. (141.58 L)
Number of Compartments 1

DBN60



Specifications

Exterior Length 60" (152.40 cm)
Exterior Depth 24.75" (62.87 cm)
Exterior Height 34.56" (87.78 cm)
Net Capacity 19.0 cu. ft. (538.02 L)
Number of Compartments 3

DBN40



Specifications

Exterior Length 40" (101.60 cm)
Exterior Depth 24.75" (62.87 cm)
Exterior Height 34.56" (87.78 cm)
Net Capacity 12.0 cu. ft. (339.80 L)
Number of Compartments 2

DBN80



Specifications

Exterior Length 80" (203.20 cm)
Exterior Depth 24.75" (62.87 cm)
Exterior Height 34.56" (87.78 cm)
Net Capacity 26.0 cu. ft. (736.24 L)
Number of Compartments 4

ALL MODELS

Door Options

Solid (black, stainless, laminated, field laminated)
Glass (black, stainless, laminate, field laminated)

DRY STORAGE – PASS-THRU



DBP24 – (shown)



DBP48 – 2-door (shown)



DBP72 – 3-door (shown)

DBP24



Specifications

Exterior Length 24" (60.96 cm)
Exterior Depth 24.75" (62.87 cm)
Exterior Height 34.56" (87.78 cm)
Net Capacity 7.4 cu. ft. (209.54 L)
Number of Compartments 1

DBP72



Specifications

Exterior Length 72" (182.88 cm)
Exterior Depth 24.75" (62.87 cm)
Exterior Height 34.56" (87.78 cm)
Net Capacity 23.9 cu. ft. (676.77 L)
Number of Compartments 3

DBP48



Specifications

Exterior Length 48" (121.92 cm)
Exterior Depth 24.75" (62.87 cm)
Exterior Height 34.56" (87.78 cm)
Net Capacity 15.3 cu. ft. (433.25 L)
Number of Compartments 2

Door / Drawer Options

ALL MODELS

Solid (black, stainless, laminated, field laminated)
Glass (black, stainless, laminated, field laminated)



Did you know there are

4.7 BILLION

ways to configure the new line of
Perlick® refrigerated back bars?



Dry Storage

OPTIONS & ACCESSORIES

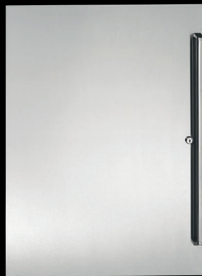
GALLERY

Perlick's new line of back bar products puts you in full control by offering a multitude of options and accessories to tailor every model to your specific needs. Please refer to your models accessory grid located on pages 40-43 to see which options and accessories are available for your specific unit.

Please refer to the following pages for each category:

- Standard Back Bar **page 40**
- Narrow-Door Back Bar **page 40**
- Sliding-Door Back Bar **page 42**
- Pass-Thru Back Bar **page 42**

DOOR FINISH OPTIONS



Stainless Steel*



Black Vinyl Clad*/
Field Laminated*



Laminated over
Black Vinyl* (shown
with custom laminate)



Laminated*
(shown with custom
laminate)

**options also available for glass door units*

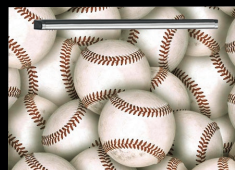
DRAWER FINISH OPTIONS



Stainless Steel

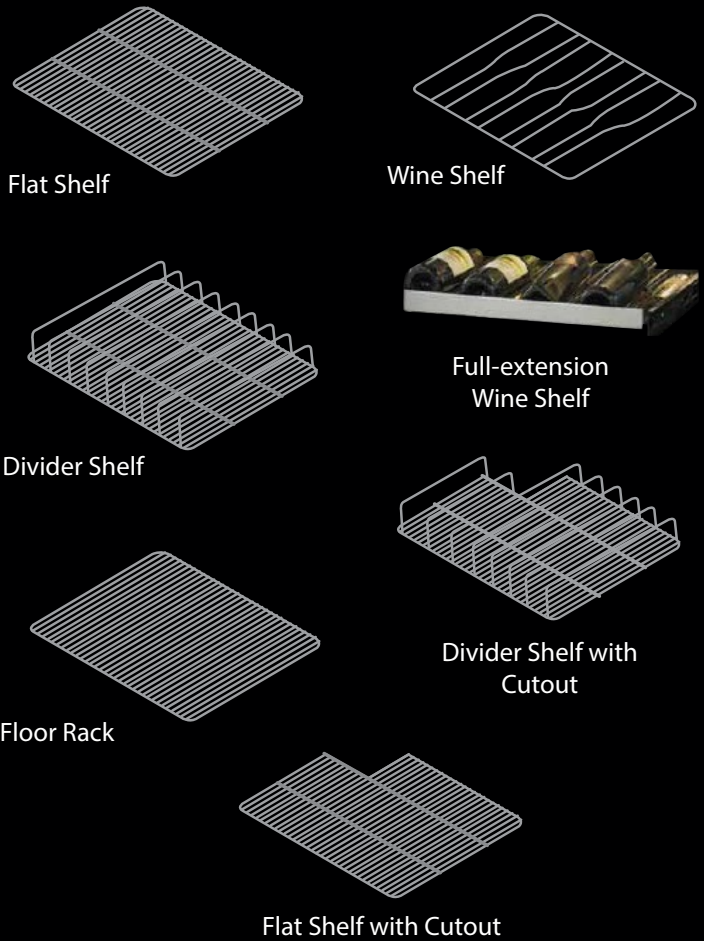


Black Vinyl Clad/
Field Laminated



Laminated
(shown with custom
laminate)

SHELVING OPTIONS



Flat Shelf

Wine Shelf

Full-extension Wine Shelf

Divider Shelf

Divider Shelf with Cutout

Floor Rack

Flat Shelf with Cutout

DOOR HANDLE OPTIONS



24" Full-length – Stainless

12" Stainless

Classic 6" Chrome w/Black Grip

Tab Style, top mount, stainless

TAPPING HEAD STYLES



Draft Arm
(Stainless Steel or Tarnish-free Brass with 1, 2 or 3 faucets)

Tee-Tower
(Stainless Steel or Tarnish-free Brass with 2, 3, 4 or 5 faucets)

Napoli
(2-faucet in Chrome or Tarnish-free Brass)

Lucky
(Chrome or Gold with 1, 2 or 3 faucets)

Panther
(3-faucet in Chrome or Gold)

ACCESSORIES



Legs
(available in adjustable 4"-5", 6"-7 1/4" or 6"-9" models)

Casters
(available in 2 7/8", 3 3/4" or 6 1/8" sizes)

Low-Profile Rollers
(1.625")

OPTIONS & ACCESSORIES

SINGLE-ZONE, DUAL-ZONE & NARROW-DOOR
BACK BAR REFRIGERATION



BBS Series
Single-Zone
[Self-Contained]



DZS Series
Dual-Zone
[Self-Contained]



BBR Series
Single-Zone
[Remote]



BBSN Series
Narrow-Door
[Self-Contained]



BBRN Series
Narrow-Door
[Remote]

	BBS36	BBS60	BBR84	BBS108	DZS60	BBR24	BBR48	BBR72	BBR96	BBSN32	BBSN52	BBSN72	BBSN92	BBRN40	BBRN60	BBRN80
TEMPERATURE CONTROL																
Refrigerator 33°-40°F [factory set to 38°F]	•	•	•	•	•	•	•	•	•	•	•	•	•	•	•	•
White Wine 40°F-65°F [factory set to 45°F]	•	•	•	•	•	•	•	•	•	•	•	•	•	•	•	•
Red Wine 40°F-65°F [factory set to 60°F]	•	•	•	•	•	•	•	•	•	•	•	•	•	•	•	•
MODEL OPTIONS																
End Wall Cooling	•	•	•	•	•	•	•	•	•	•	•	•	•	•	•	•
Digital Control	•	•	•	•	•	•	•	•	•	•	•	•	•	•	•	•
230 VAC/50 Hz available	•	•	•	•	•	•	•	•	•	•	•	•	•	•	•	•
Tapping available	•	•	•	•	•	•	•	•	•	•	•	•	•	•	•	•
Drawers available	•	•	•	•	•	•	•	•	•	•	•	•	•	•	•	•
TOP FINISHES																
Stainless steel	•	•	•	•	•	•	•	•	•	•	•	•	•	•	•	•
Laminate	•	•	•	•	•	•	•	•	•	•	•	•	•	•	•	•
FRONT GRILLE FINISH																
Black pre-coat	•	•	•	•	•	•	•	•	•	•	•	•	•	•	•	•
Stainless steel	•	•	•	•	•	•	•	•	•	•	•	•	•	•	•	•
Laminate over Black	•	•	•	•	•	•	•	•	•	•	•	•	•	•	•	•

	BBS36	BBS60	BBR84	BBS108	DZS60	BBR24	BBR48	BBR72	BBR96	BBSN32	BBSN52	BBSN72	BBSN92	BBRN40	BBRN60	BBRN80
DOOR FINISHES																
Solid black vinyl-coated/field laminate	•	•	•	•	•	•	•	•	•	•	•	•	•	•	•	•
Solid stainless steel	•	•	•	•	•	•	•	•	•	•	•	•	•	•	•	•
Solid laminate	•	•	•	•	•	•	•	•	•	•	•	•	•	•	•	•
Glass w/black vinyl frame/field laminate	•	•	•	•	•	•	•	•	•	•	•	•	•	•	•	•
Glass w/stainless steel frame	•	•	•	•	•	•	•	•	•	•	•	•	•	•	•	•
Glass w/laminate frame	•	•	•	•	•	•	•	•	•	•	•	•	•	•	•	•
DRAWER FINISHES																
Solid black vinyl-coated/field laminate	•	•	•	•	•											
Solid stainless steel	•	•	•	•	•											
Solid laminate	•	•	•	•	•											
HANDLE OPTIONS																
Full-length SS door handle	•	•	•	•	•	•	•	•	•	•	•	•	•	•	•	•
12" SS door handle	•	•	•	•	•	•	•	•	•	•	•	•	•	•	•	•
Classic 6" door pull	•	•	•	•	•	•	•	•	•	•	•	•	•	•	•	•
SS pull tab handle	•	•	•	•	•	•	•	•	•	•	•	•	•	•	•	•
Full-length 16" SS drawer handle	•	•	•	•	•											
ACCESSORIES																
Legs, adjusts – 6" to 7 1/4"	•	•	•	•	•	•	•	•	•	•	•	•	•	•	•	•
Legs, adjusts – 6" to 9"	•	•	•	•	•	•	•	•	•	•	•	•	•	•	•	•
Casters – 2 7/8"	•	•	•	•	•					•	•	•	•			
Casters – 3 3/4"	•	•	•	•	•					•	•	•	•			
Casters – 6 1/8"	•	•	•	•	•					•	•	•	•			
Rollers – 1.7"	•	•	•	•	•					•	•	•	•			
AVAILABLE SHELVING STYLES*																
Standard flat shelving	•	•	•	•	•	•	•	•	•	•	•	•	•	•	•	•
Divided shelving	•	•	•	•	•	•	•	•	•	•	•	•	•	•	•	•
Standard cutout shelves	•	•	•	•	•	•	•	•	•	•	•	•	•	•	•	•
Divider cutout shelves	•	•	•	•	•	•	•	•	•	•	•	•	•	•	•	•
Wine Racks	•	•	•	•	•	•	•	•	•	•	•	•	•	•	•	•
Full-extension Wine Shelves	•	•	•	•	•	•	•	•	•	•	•	•	•	•	•	•
LEGS & BASEPLATE KITS																
6" Legs, stainless steel front baseplate	•	•	•	•	•	•	•	•	•	•	•	•	•	•	•	•
6" Stainless end baseplate	•	•	•	•	•	•	•	•	•	•	•	•	•	•	•	•
4" Legs, stainless steel front baseplate	•	•	•	•	•	•	•	•	•	•	•	•	•	•	•	•
4" Stainless end baseplate	•	•	•	•	•	•	•	•	•	•	•	•	•	•	•	•

* Door models only; not applicable for drawers

OPTIONS & ACCESSORIES

SLIDING DOOR & PASS-THRU
BACK BAR REFRIGERATION



SDBS Series
Sliding Door
[Self-Contained]



SDBR Series
Sliding Door
[Remote]



SDPS Series
Sliding Door
Pass-Thru
[Self-Contained]



SDPR Series
Sliding Door
Pass-Thru
[Remote]



PTS Series
Pass-Thru
[Self-Contained]

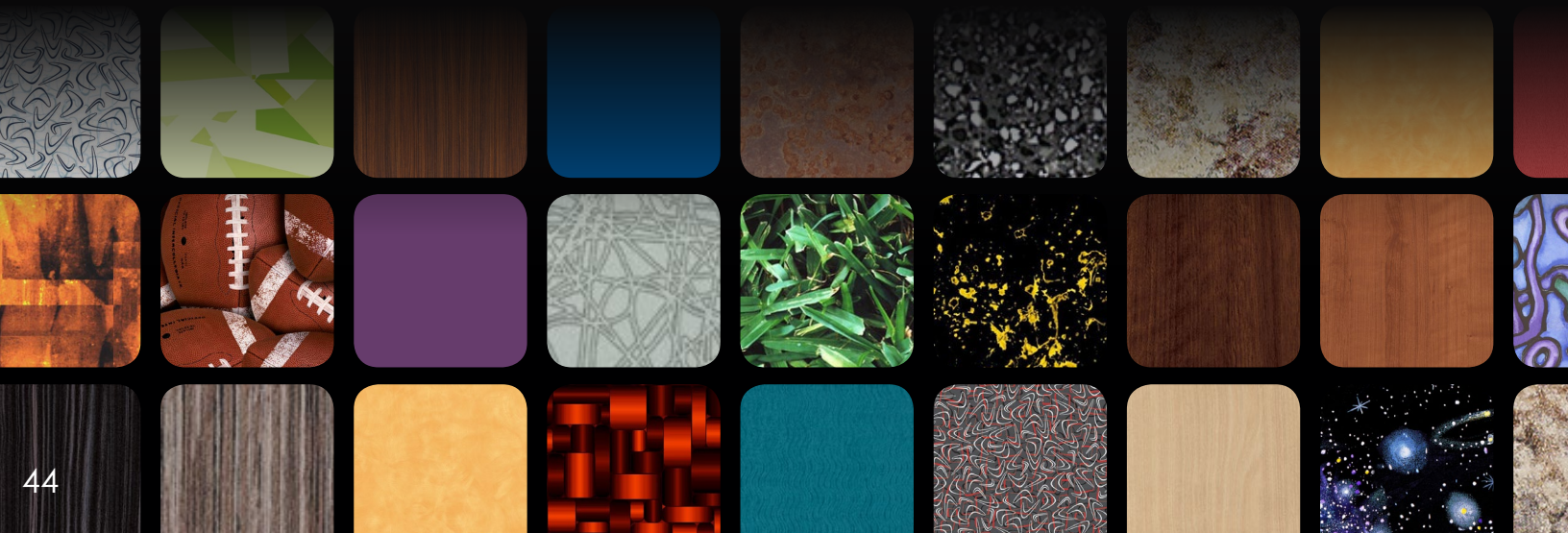


PTR Series
Pass-Thru
[Remote]

	SDBS60	SDBS108	SDBR48	SDBR96	SDPS60	SDPR48	PTS36	PTS60	PTS84	PTR48	PTR72
TEMPERATURE CONTROL											
Refrigerator 34°-42°F [factory set to 38°F]	•	•	•	•	•	•	•	•	•	•	•
White Wine 40°F-65°F [factory set to 45°F]	•	•	•	•	•	•	•	•	•	•	•
Red Wine 40°F-65°F [factory set to 60°F]	•	•	•	•	•	•	•	•	•	•	•
MODEL OPTIONS											
End Wall Cooling	•	•	•	•	•	•	•	•	•	•	•
Digital Control	•	•	•	•	•	•	•	•	•	•	•
230 VAC/50 Hz available	•	•	•	•	•	•	•	•	•	•	•
Tapping available							•	•	•	•	• (right compartment only)
TOP FINISHES											
Stainless steel	•	•	•	•	•	•	•	•	•	•	•
Laminate	•	•	•	•	•	•	•	•	•	•	•
FRONT GRILLE FINISH											
Black pre-coat	•	•	•	•	•	•	•	•	•	•	•
Stainless steel	•	•	•	•	•	•	•	•	•	•	•
Laminate over Black	•	•	•	•	•	•	•	•	•	•	•

	<i>SDBS60</i>	<i>SDBS108</i>	<i>SDBR48</i>	<i>SDBR96</i>	<i>SDPS60</i>	<i>SDPR48</i>	<i>PTS36</i>	<i>PTS60</i>	<i>PTS84</i>	<i>PTR48</i>	<i>PTR72</i>
DOOR FINISHES											
Solid black vinyl-coated/field laminate							•	•	•	•	•
Solid stainless steel							•	•	•	•	•
Solid (laminated)							•	•	•	•	•
Glass w/black vinyl frame/field laminate							•	•	•	•	•
Glass w/stainless steel frame							•	•	•	•	•
Glass w/laminate frame							•	•	•	•	•
DRAWER FINISHES											
Solid black vinyl-coated/field laminate											
Solid stainless steel											
Solid (laminated)											
HANDLE OPTIONS											
Full-length SS door handle							•	•	•	•	•
12" SS door handle							•	•	•	•	•
Classic 6" door pull							•	•	•	•	•
SS pull tab handle							•	•	•	•	•
Full-length 16" SS drawer handle											
ACCESSORIES											
Legs, adjusts – 6" to 7 1/4"	•	•	•	•	•	•	•	•	•	•	•
Legs, adjusts – 6" to 9"	•	•	•	•	•	•	•	•	•	•	•
Casters – 2 7/8"	•	•									
Casters – 3 3/4"	•	•									
Casters – 6 1/8"	•	•									
Rollers – 1.7"	•	•	•	•	•						
AVAILABLE SHELVING STYLES											
Flat shelving	•	•	•	•	•	•	•	•	•	•	•
Divider shelving							•	•	•	•	•
Standard cutout shelves											
Divider cutout shelves											
Wine Racks	•	•	•	•	•	•	•	•	•	•	•
Full-extension Wine Shelves											
LEGS & BASEPLATE KITS											
6" Legs, stainless steel front baseplate	•	•	•	•	•	•	•	•	•	•	•
6" Stainless end baseplate	•	•	•	•	•	•	•	•	•	•	•
4" Legs, stainless steel front baseplate	•	•	•	•	•	•	•	•	•	•	•
4" Stainless end baseplate	•	•	•	•	•	•	•	•	•	•	•

YOUR BACK BAR. YOUR BRAND. YOUR CHOICE.





Whether it's a 50s-inspired diner or your favorite breed of dog, you can customize any Perlick back bar with laminate to reflect your style, design or brand. Choose from thousands of colors and patterns from the industry's top laminate manufacturers.

Abet • Arborite • Arpa • Chemetal • Formica • Laminart
Nevamar • Octolam • Pionite • Wilson Art



WARRANTY INFORMATION

ONE YEAR PARTS & LABOR WARRANTY

Perlick products are guaranteed against defects in both material and workmanship for a period of one year from date of sale. Defective parts will be replaced on a no-charge basis when adjudged defective upon inspection. We are not responsible for parts damaged by alteration, unauthorized service, accident or abuse. Other costs incident to replacement, to include loss of sales and/or loss of product must be borne by the user. Warranty repairs will be performed during Perlick's authorized service agent's normal business hours. The user is responsible for any overtime premium associated with after-hours service. Also, Perlick is not responsible for travel charges that exceed one hour travel time. For further details of our Glasswasher warranty, refer to the Glasswasher Installation and Operation Instructions manual.

1. Parts returned to Perlick shall be returned freight prepaid and shall be identified with Perlick's serial number and return merchandise authorization number.
2. Improper operation due to voltage variances, inadequate wiring and physical damage is the responsibility of the purchaser. They are not manufacturing defects.
3. Condenser coils shall be cleaned regularly. Failure to provide an adequate flow of cooling air will void this warranty.
4. Factory-specified maintenance and installation will be provided by the selling dealer who shall also be responsible for the installation and set up of these products in accordance with local plumbing, refrigeration and electrical codes.

SECOND YEAR EXTENDED PARTS & LABOR WARRANTY

Perlick's one year parts and labor warranty can be extended to two years with the purchase of a two year parts and labor warranty. Visit perlick.com for more information on obtaining this protection.

FOUR YEAR ADDITIONAL COMPRESSOR WARRANTY (SELF-CONTAINED UNITS)

The Perlick Corporation will warrant to the original user the sealed-in mechanism consisting of the motor compressor and component parts within the sealed housing of the condensing unit for an additional period of four years following the regular one-year warranty period. This plan applies to the compressor only to the compressor only, installed within the United States and Canada.

Perlick's 1 year parts labor/service policy applies to the United States and Canada. It does not apply to refrigeration systems added by others (remote systems) or any part which has been subject to misuse, neglect, alteration, accident, or to any damage caused by transportation, flood, fire or other acts of God.

Perlick's 1 year parts & service/labor warranty provides that Perlick's registration card be completed and mailed within ten days after the date of installation. Failure to reply promptly could void Perlick's labor/service warranty.

EXPORT

One-year parts only.

For additional warranty information, terms and conditions, visit perlick.com.



Perlick®

“Build the best product you can. A poorly made product is expensive at any price. Do not listen to those who would have you build something cheaply. Be honest with yourself, your customers and your fellow man. Only a few black marks will soil a good reputation. Remember these things always.”

- Robert Perlick, 1925



Perlick®

8300 West Good Hope Road, Milwaukee, Wisconsin 53223
perlick.com • 800.558.5592