

CONFORMANCE INFORMATION



EUROPEAN AUTHORIZED REPRESENTATIVE:
Wellkang Ltd, 29 Harley Street,
LONDON W1G 9QR
England, United Kingdom
Wellkang.ltd.uk

CE 0120 With the CE marking Persona Medical declares that this hearing instrument is in compliance with the European Directive 93/42/EEC concerning medical devices, as well as Directive 99/5/EC (R&TTE) concerning radio and telecommunications terminal equipment. A copy of the Declaration of Conformity can be obtained from the below address:

Persona Medical, 170 N. Cypress Way, Casselberry, FL 32707 USA

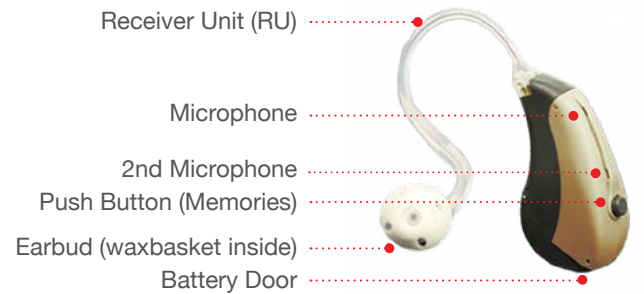
Copyright © 2018 Persona Medical • All rights reserved. No part of this publication may be reproduced without permission from Persona Medical.

US Patents 7,139,404; 8,976,991 Other Patents Pending.

LICENSING:
FCC ID: 2AOWB-OPA



Identifying Your Device



The serial number is on the bottom of the case while the model is on the battery door.



Features*

- 100% Digital
- Push Button (Multi-memory)
- Adaptive Noise Reduction
- Directional Microphones
- Adjustable Power On Delay
- Low Battery Indicator
- Memory Tone Indicator
- Telecoil
- Replaceable Snap-Tip Earbuds
- Adaptive Feedback Reduction
- Adaptive Speech Enhancement

* Not all features may apply to your instrument.



PRODUCT MANUAL

CE 0120

PERSONA MEDICAL
170 N. CYPRESS WAY
CASSELBERRY, FL USA 32707
WWW.PERSONAMEDICAL.COM
TEL: (407) 339-2422
INFO@PERSONAMEDICAL.COM



Welcome back to the world of sound!™

A belief that in order to succeed, you must have a certain passion and desire to give your every endeavor your very best. For over 50 years, Persona Medical forged this very commitment to excellence into every hearing instrument we design.



Open Fit Hearing Instruments

A rare combination of state of the art technology and custom craftsmanship brings you the best instruments available today. Currently, our products are distributed all over the world. We thank you for allowing us to assist with your hearing needs.

These instructions along with the guidance from your Hearing Healthcare Professional will help you attain the maximum benefit from your hearing instrument(s).

FCC COMPLIANCE

Your hearing system complies with Part 15 of the Federal Communication Commission

(FCC) rules. Operation is subject to the following conditions:

1. This device may not cause harmful interference.
2. This device must accept any interference received, including interference that may cause undesired operation.

Changes or modifications not expressly approved by the party responsible for compliance could void the user's authority to operate the equipment.

3. Changes or modifications not expressly authorized by Persona Medical could void the user's ability to operate this device.

TECHNICAL INFORMATION

Your hearing system contains a radio transmitter using short range magnetic induction technology working at 10.597 MHz. The magnetic field strength of this transmitter is -16.8dBµA/m @ 2m. The emission power from this radio system is well below international emission limits for Human Exposure. The hearing system complies with international standards concerning Electromagnetic Compatibility. Check with your hearing care professional to determine if your hearing system contains a radio transmitter.

SAFETY INFORMATION

WARNING: Although your hearing system has been designed to comply with the most stringent international electromagnetic compatibility standards, the possibility cannot be excluded that it may cause interference with other equipment, such as medical devices. It is also possible that unforeseen interference may occur in the hearing aid due to electromagnetic radiation from other products such as alarm systems, room surveillance equipment, and mobile phones.

Only for two instruments or the use of a remote control: In some countries restrictions for the usage of wireless equipment exist. Refer to local authorities for further information.

Powering your Device / Controls

Batteries - Uses a 312 battery

On - With your finger, gently open the door. Insert battery and close the door. Your instrument will take several seconds before it turns on.

When placing the battery in your instrument, be sure to position the positive (+) symbol face up into the battery door.

Off - To turn your hearing instrument off, simply open the battery door. Store in a safe dry place.

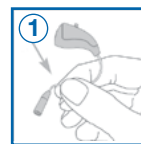
Telephone - Simply press the push button to the memory assigned for telephone use. If you have two devices, the wireless functionality will automatically enable you to hear in both ears.

Memories - To change the memory, press the control switch on one device, and the wireless functionality will automatically make the same memory selection in the other device.

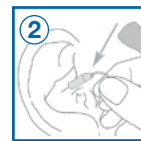
CAUTION: Batteries are dangerous if swallowed! Keep batteries out of the reach of children. Never put batteries in your mouth for any reason they are easily swallowed. In the event a battery has been swallowed, seek immediate medical attention. For more information call the National Battery Hotline at 202-625-3333.

Inserting / Removing your Device

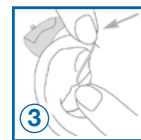
Inserting - Before insertion, make sure the battery door is closed properly. The procedure for inserting your instrument:



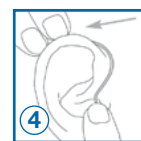
1. To properly position your hearing instrument, hold the base of the Receiver Unit (RU) wire with the thumb and index finger, allowing the earbud to be freely inserted into the ear canal.



2. At this point, the instrument is inverted from its final position. Carefully insert the earbud into the ear canal.



3. While holding the RU in place in the ear canal with your thumb or index finger, carefully rotate the hearing instrument over the top of your ear while pressing it against the head.



4. If correctly placed, the hearing instrument will be virtually invisible to others. Make sure that the receiver unit is still properly positioned in your ear canal.

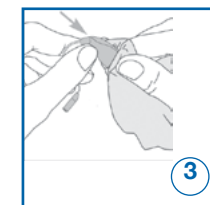
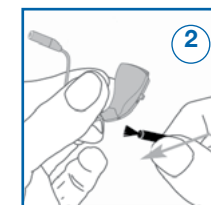
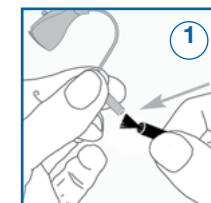
NOTE: Some irritation may occur due to becoming accustomed to wearing a new hearing instrument. If swelling or redness occurs, discontinue use and visit your Doctor.

Maintenance for your Device

It is recommended that you clean your hearing instrument daily. Inspect the wax basket and the microphone opening(s) to make sure they are clear of ear wax and debris.

Daily, brush the white wax basket while holding instrument upside down (1), so debris will fall out of the earbud wax basket. Also, brush the microphone port (2). If the hearing instrument is weak or not working, you may need to replace the earbud.

Before you store the instrument, wipe the instrument with a dry tissue (3). Do not use a wet wipe or alcohol because moisture may seep into the receiver opening.

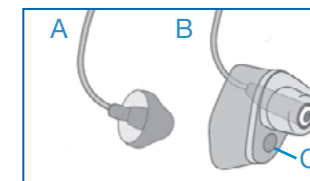


Replacing Earbuds / Tips

Earbuds / Tips

- A. RU with earbud
- B. RU with ZipTip -

Keep the small vent hole (C) to the bottom of the ear farther from the device



Removing and installing the earbud

Hold the RU wire (D) with one hand, and pull the white earbud in the opposite direction. Snap on a new earbud until you feel it click. Earbuds are generally not cleanable.

