

## FCC NOTICE

This equipment has been tested and found to comply with the limits for a Class B digital device, pursuant to Part 15 of the FCC rules. These limits are designed to provide reasonable protection against harmful interferences in a residential installation. This equipment generates, uses and can radiate radio frequency energy and, if not installed and used in accordance with the instructions, may cause harmful interference to radio communications.

However, there is no guarantee that interference will not occur in a particular installation. If this equipment does cause harmful interference to radio or television reception, which can be determined by turning the equipment off and on, the user is encouraged to try to correct the interference by one or more of the following measures:

1. Reorient or relocate the receiving antenna
2. Increase the separation between equipment and receiver
3. Connect the equipment to an outlet on a circuit different from that to which the receiver is connected
4. Consult the dealer or an experienced radio/TV technician.

## FCC WARNING

Modifications not expressly approved by the manufacturer could void the user authority to operate the equipment under FCC rules.

## USE CONDITIONS

This device complies with Part 15 of the FCC rules. Operation is subjected to the following two conditions: (1) this device may not cause harmful interference, and (2) this device must accept any interference received, including interference that may cause undesirable operation.

CatGenie Model Number CG 10000 v1

## CONTACT INFORMATION

PetNovations Ltd.  
Kefar Bazra  
60944 ISRAEL  
Tel: 972-9-7445012  
Fax: 972-9-7445013  
www.CatGenie.co.il

© 2008 PetNovations Ltd.

## 90-DAY, MONEY-BACK GUARANTEE

With our 90-Day, Unconditional, Money Back Guarantee you have a total of 90- days from your purchase date for you and your cats to fall in love with the CatGenie® Self-Washing Cat Box. If you're not completely satisfied, return your CatGenie before the 90-day deadline. If you purchased your CatGenie directly from a retail store, return it to the store. (Check with your retailer or on-line store for their individual return policy.) **SAVE THE ORIGINAL PACKAGING.**

If you purchased CatGenie from PetNovations, Ltd., call us at **+972-9-7445012 to receive your Return Authorization Number.** To qualify for the 90-Day, Money-Back, the returned unit must have an RA# . Please clean the CatGenie and throw away used Granules and used Cartridges. Carefully return and send the clean CatGenie in as close to original condition and in its original carton to qualify for a full refund. Please include your reason for return. **Extra supplies that are used or opened are not eligible for refunds.**

## 2-YEAR WARRANTY

CatGenie has been engineered and crafted with great care for your satisfaction. Please read all instructions before using this product. PetNovations, Ltd. warrants the CatGenie and all its parts thereof, except as set forth below, ONLY TO THE ORIGINAL PURCHASER AT RETAIL to be FREE FROM DEFECTIVE MATERIALS AND WORKMANSHIP from the date of original retail purchase as the Warranty Period.

THIS LIMITED WARRANTY FROM PetNovations Ltd. IS VALID ONLY IN THE 48 CONTIGUOUS UNITED STATES AND THE DISTRICT OF COLUMBIA. IT IS NOT VALID IN ALASKA, HAWAII OR OTHER COUNTRIES.

**A.** This two-year limited warranty is valid only for the Warranty Period and applies only to replacement of the product found to be defective in material or workmanship. This warranty does not apply to damage due to misuse, abuse, neglect, alteration or the use of any unauthorized attachment; nor damage caused by use of an electrical circuit not specified on the CatGenie product.

**B.** If this product is found to be defective, PetNovations Ltd. will replace the defective product at no charge to the original owner. Such replacement services shall be rendered solely by PetNovations Ltd.

**If any defects should be found in this product, please call PetNovations Customer Service at toll free +972-9-7445012 in order to receive a Return Authorization Number.** A new or remanufactured equivalent product will be shipped directly to you. Once you receive the replacement product, kindly box the defective product, in the replacement box, and return to PetNovations Ltd. with a copy of your bill of sale and Return Authorization number. PetNovations Ltd. will prepay all freight for replacement items, as well as return of defective items. This warranty is void if owner repairs or modifies the product in any way.

**C.** PetNovations Ltd. IS NOT LIABLE FOR INCIDENTAL OR CONSEQUENTIAL DAMAGES OF ANY NATURE. THERE IS NO IMPLIED OR EXPRESS WARRANTY OF MERCHANTABILITY OR FITNESS FOR A PARTICULAR PURPOSE ON THIS PRODUCT. Some states do not allow the exclusion of incidental or consequential damages or limitations on how long an implied warranty lasts, so these limitations or exclusions may not apply to you. This warranty gives you specific legal rights and may also have other rights, which vary from state to state.

**D.** You can Register the Warranty for your CatGenie at: [www.catGenie.co.il](http://www.catGenie.co.il) to Customer Service to Warranty. This will enable PetNovations Ltd. to contact you about upgrades, problems with your unit, or if you need a receipt.

**If you have any questions concerning your product or warranty, contact our Customer Support Toll Free: +972-9-7445012.**

# CatGenie®

The World's Only Self-Flushing, Self-Washing Cat Box™

## Your GUIDE for SUCCESSFUL CATGENIE™ OPERATION



Check  
[catGenie.com](http://catGenie.com) /  
Customer Service  
for Manual  
updates

**TIP: Watch Video of What to Expect During Cleaning  
at [CatGenie.co.il](http://CatGenie.co.il) / Customer Service**

# IMPORTANT SAFETY INSTRUCTIONS

## To Prevent Risk of Fire, Electric Shock, or Injury to People and Pets.

**TO PREVENT FIRE** or shock hazard, do NOT expose the CatGenie® Processing Unit to rain or sources of splashing water. Do NOT operate the CatGenie with wet hands.

**READ ALL INSTRUCTIONS BEFORE INSTALLING AND USING YOUR CATGENIE. USE THE CATGENIE ONLY FOR WHAT IT IS INTENDED.** All modifications or changes not explicitly described or approved of in this manual could void your Warranty.

**WARNING:** Basic safety precautions must and should always be followed to reduce the risk of personal injury.

### ON SAFETY

Should any solid object fall on or into the Processing Unit or should liquid penetrate the Processing Unit, unplug the CatGenie and have it checked by qualified personnel before using.

Unplug the the CatGenie Electric Cord from the outlet before attempting to clear a jam or remove an object from the Hopper's processing area. Do NOT put fingers or hands into the Hopper opening while the CatGenie is operating.

### ON POWER SOURCES

Before operating the CatGenie, check that your local power supply is identical to the CatGenie operating voltage, which is 230VAC. See complete specifications in Gray Box on right.

UNPLUG the CatGenie FROM ITS ELECTRIC OUTLET before cleaning the Processing Unit or washing any other CatGenie parts. NOTE: When the Processing Unit is removed from the base, electric current is still connected to it, so unplug the Genie Electric Cord.

If you are not going to use the CatGenie for an extended period of time, disconnect the CatGenie from the electric outlet.

When disconnecting the CatGenie electric power cord, pull the PLUG. NEVER pull the cord. A damaged or defective AC power cord should be changed at a qualified service shop.

### ON PLACEMENT

Position the CatGenie in a place with adequate ventilation to prevent heat build-up and to prolong the life of the CatGenie.

Do NOT place CatGenie near heat sources, or in a place subject to direct sunlight, excessive dust, or mechanical shock.

Do NOT place anything on top of or behind the unit. This may block ventilation holes and cause malfunction.

Do NOT install or store the CatGenie where it could be exposed to rain or splashing water.

See the Simple Setup Guide for site selection options.

### ON OPERATION

Before connecting the CatGenie to the power source, be sure to read this manual.

NEVER, under any circumstances, connect the CatGenie to a power source unless the CatGenie Processing Unit is properly seated and secure in its slot in the Base.

Do NOT operate CatGenie with wet hands. Follow all instructions and warnings in all CatGenie Manuals.

### ON CLEANING

Clean the Processing Unit and Control Panel only with a soft damp cloth slightly moistened with water. NEVER immerse it in or spray it with water.

Do NOT use any type of abrasive pad, scouring powder or solvent such as alcohol or benzene. See Cleaning the CatGenie on pages 14 and 15 for further instructions.

**If you have any questions or problems concerning your CatGenie, please contact our technical support staff at: +972-9-7445012**

PetNovations, Ltd. cannot assume responsibility for any and all possible damage if CatGenie is inappropriately operated or used for a purpose other than that for which it is intended. PetNovations, Ltd. reserves the right to change design and specifications without notice.

### CATGENIE SPECIFICATIONS

Power requirements: 230VAC, 50Hz (8A Fused)  
Power Consumption: 20W (Cleaning Cycle- 17Minutes)  
1200W (Drying Cycle- 17Minutes)  
Water Pressure: Min. 0.05Mpa, Max. 0.80Mpa  
Approximate Weight: Total CatGenie: 11.5Kg (Includes 5.5Kg Processing Unit, Base Unit 6.0Kg)  
Supplied Accessories: Utility or Laundry Room T-Adapter, Bathroom or Powder Room T-Adapter, SaniSolution Smart Cartridge, and Washable Granules.

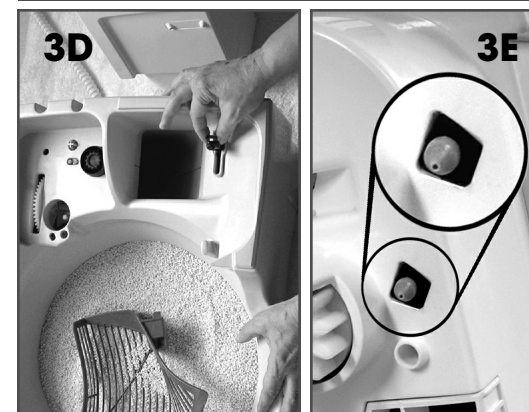
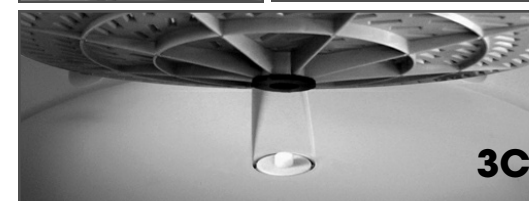
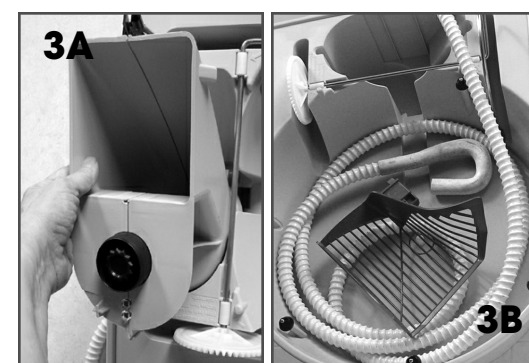
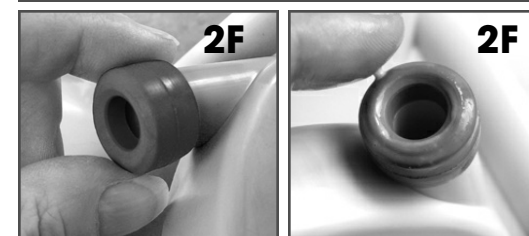
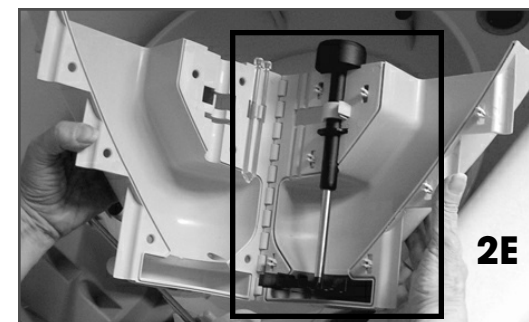
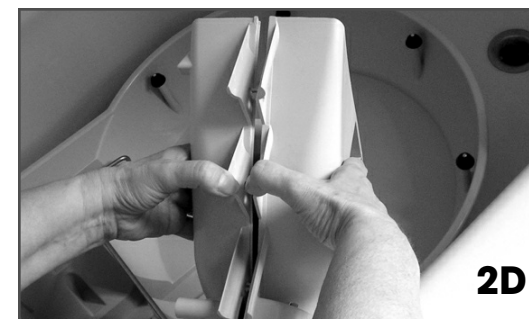
### CUSTOMER SUPPORT

Please call Customer Support if you see visible damage to the CatGenie or if you have cat adjustment problems. We are happy to assist you with ANY question or problem that you may have concerning your CatGenie.

**Call Toll Free: +972-9-7445012**

**Email: support@CatGenie.co.il**

**Check: www.CatGenie.co.il**



### STEP 2. WASHING CATGENIE® (continued)

**D.** Unsnap the 3 Clips that run diagonally on the outside of the Hopper opposite the hinged side. Open the Hopper like a book and keep two pieces together.

**E.** When open, pay special attention to the Impeller. Impeller is the black fan-like part attached to the bottom of the metal shaft. Remove any cat hair, Granules, or other foreign matter from the Impeller blades, the metal shaft, and the area that encloses the Impeller.

Wash the Hopper, Impeller, and Water Sensor with a mild liquid soap and water. Use a sponge or soft cloth. Rinse thoroughly. Snap Hopper closed. It's closed when snaps click and both sides stay together with no gaps.

**F.** PUT THE RED WASHER BACK ON THE HOPPER and lubricate ONLY the outside of the Washer with any food oil (i.e. olive, corn, etc.) or baby oil.

**G.** Wash the Base and Brim with a mild liquid soap and water. Rinse thoroughly. Lift up the Base enough to allow water to run out of the Genie DrainHose. Dump any remaining water from the Base.

Check that all parts are clean and no soap, cat hair, or granules remain.

Dry the Base and Brim with a lint-free cloth or paper towels.

**H.** Wash, rinse and dry the Hopper Cover. Pay particular attention to the inside back of the Cover for any remaining dirt.

### STEP 3. REASSEMBLING CATGENIE.

**IMPORTANT: THE RED DRAIN WASHER** must be in place on the Hopper.

**A.** Put the Hopper back in its place in the Base.

**B.** Coil the Genie DrainHose inside the Base. Take Base, Brim, and Hopper Cover back to the CatGenie site. Make sure the Genie DrainHose is in the groove in the back of the Base. Place the Base back by the Processing Unit.

**C.** The Bowl has a recess in the bottom that must fit over the nipple in the center of the Base. Carefully put the Bowl back in the Base. Check to be sure that the Bowl spins easily in the Base.

**D.** Hold the back of the Brim up over the back of the Base. Push the Black Clip on the end of the metal Arm up through the slot. Lower the Brim onto the Base and, working from back to front, press the Brim onto the Base. You will hear a snap when both parts lock together. Attach the GenieHand to the Arm and push the GenieHand back into the upright position.

**E. NEVER WASH THE PROCESSING UNIT.** Gently wipe it off with a soft damp cloth. If the Orange Niplet on the bottom of the Unit has built-up SaniSolution residue, carefully pull it off, rinse it and put it back. Make sure it is secure.

Put the Processing Unit back on the Brim taking care to align it correctly and seat it securely in its slot. Replace the Hopper Cover. Push the water supply line and power cord back into their respective grooves.

Move the CatGenie back in place and plug it into the electric outlet. The CatGenie will do a sequence of self-checks indicated by Beeping sounds and LEDs Lights. IF IT DOES NOT, unplug it. Then lift the Processing Unit out and carefully realign it and reseat it in its place in the Brim.

### CLEANING OUT A CLOG (continued)

Follow directions for cleaning and re-assemble on site.

**BUT do not attach the GenieHand Run a wash cycle. Because Granules are wet, connect the GenieHand after Scoop Cycle. Press Start/Pause Button and replace GenieHand only for wash and dry cycles. Press to take off Pause and restart cleaning.**





## CLEANING YOUR CATGENIE.® 3 Easy Steps, 20 Minutes, Twice a Year.

To assure optimum performance, we recommend that twice a year you wash the CatGenie Base, Brim, Hopper, and Hopper Cover. Taking apart, cleaning, and reassembly takes less than 20 minutes. Wash in a bathtub or outdoors with a garden hose. If you have long hair cats, best clean more often especially in the Spring/Summer shedding season, and in the Fall when cats shed old fur for new, heavier coat growth.

**TIP:** To make cleaning as quick and easy as possible, run one complete Cleaning Cycle before doing this procedure.

**WARNING:** FIRST UNPLUG the Genie Electric Cord, BEFORE you take the CatGenie apart.

### STEP 1. TAKING CATGENIE APART.

**A.** Move the CatGenie about a foot away from the wall. Place a folded thick towel on the floor between the back of the CatGenie and wall. Remove Hopper Cover and put aside. Pull the Processing Unit up and out of its slot. Keep Unit upright and carefully place it on the towel next to the wall. Lean Processing Unit against the wall so it won't tip over. **No need to shut off water or disconnect the Genie Water Hose. Do Not remove the SaniSolution Cartridge.**

**NOTE:** NEVER WASH the Processing Unit or move it from its location. You can wipe it with a damp soft cloth.

**B.** Pull up the GenieHand and Arm. Unclip the GenieHand and take it off the Arm. Push the Arm back into its opening in the Brim.

**C.** To lift the Brim off of the Base, use leverage by pressing down on the round Black Knob showing through the Brim with your thumb. Use your other hand to pull up the back of the Brim. Lift the Brim off the Base and set the Brim aside.

**D.** Lift the Bowl, with the Washable Granules intact, out of the Base. Put the Bowl in a safe place where the Granules won't be spilled or used.

**E.** Rest the Brim on top of the Base. Carefully unhook the Genie DrainHose from the toilet or laundry drain. Hold the Hook up and carefully coil the Hose and Hook inside the Base to keep water from dripping on the floor.

Put the Base with the Hose, Brim, Hopper Cover and GenieHand into the bathtub, or carry them to another suitable location where you can wash them.

#### IF YOU ARE CLEANING OUT A CLOG...

Follow directions for removing Hopper Cover, Processing Unit, GenieHand, and Brim. But leave Bowl and Granules in the Base.

Bring all to a tub, shower, or outdoors.

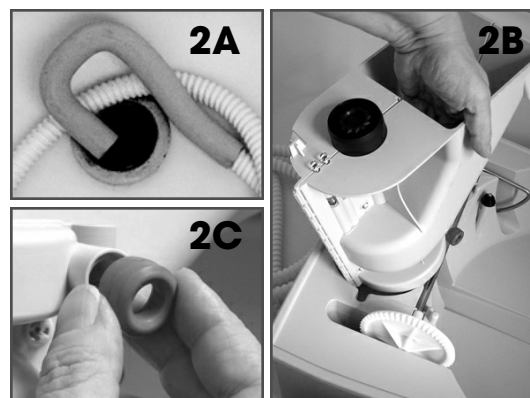
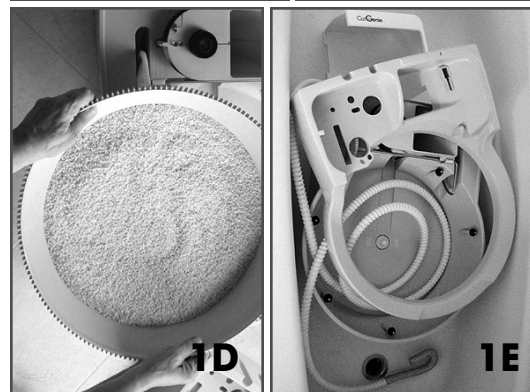
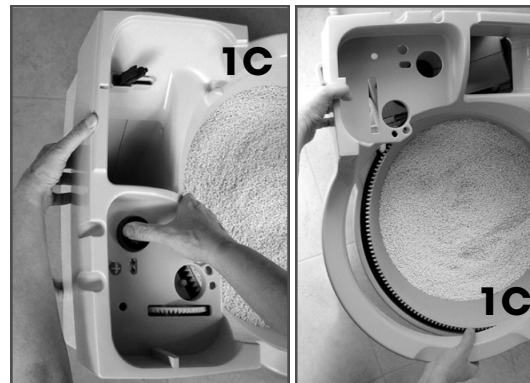
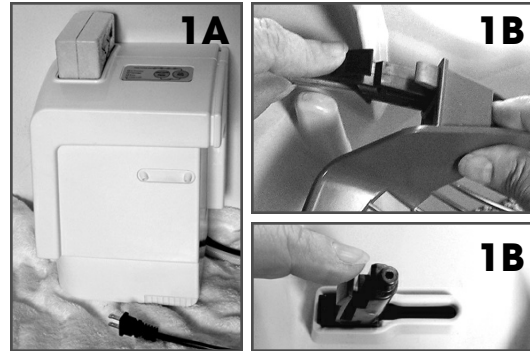
Remove the Bowl, save the Granules. Drain or dump ONLY water, not Granules. (continue on pg 15)

### STEP 2. WASHING CATGENIE.

**A.** Take the Genie DrainHose out of the Base and rest it in the bathtub so that the Hook is near the tub drain.

**B.** SLOWLY pull the Hopper up and out of the Base. Carefully pull off the Red Drain Washer that is on the side of the Hopper near the bottom.

**C. RINSE OFF THE RED WASHER AND PUT IT ASIDE** somewhere nearby so it will be handy and not get lost or misplaced. **The Red Washer is a critical part. KEEP IT SAFE; DON'T MISPLACE IT.**



## OWNER'S GUIDE TABLE OF CONTENTS

Safety Instructions.....	2
CatGenie Specifications.....	2
Contacting Customer Support.....	2
CatGenie Terms.....	3
Control Panel Explanation.....	4
Automatic Start Setup.....	5
Tips for Best CatGenie Operation.....	6
Automatic & Manual Start Benefits.....	6
Child Lock.....	6
Washable Granules.....	6
SaniSolution Smart Cartridge.....	7
Bath & Laundry Room Setups.....	8
Inside Your CatGenie.....	8
Installing Spare Parts.....	9
Trouble Shooting Guide.....	10-12
How to Eliminate Clogs.....	11
FAQs about CatGenie.....	13
Cleaning the CatGenie.....	14-15
FCC Notice & Warning.....	Back Cover
90-Day, \$-Back Guarantee.....	Back Cover
2-Year Warranty.....	Back Cover

### CATGENIE TERMS

- Hopper Cover:** Stores GenieHand, hides Hopper
- Hopper:** Chamber where Impeller macerates waste
- Control Panel:** Buttons, LEDs, and Error Indicators
- SaniSolution:** Cleans and decontaminates
- GenieEyes:** Sensors delay auto wash if cat enters
- Processing Unit:** Holds motors and electronics
- GenieHand:** Scoops, Scrubs, Sifts. Attaches to Arm
- Washable Granules:** Satisfy cat's need to dig & cover
- Bowl:** Where cats and Washable Granules go
- Brim:** Encircles the Bowl; attaches to Base
- Base:** Very bottom of CatGenie
- Genie DrainHose:** Drains into toilet or waste pipe
- Genie Water Supply Line:** Connects to cold water
- Genie Electric Cord:** Plugs into AC power

