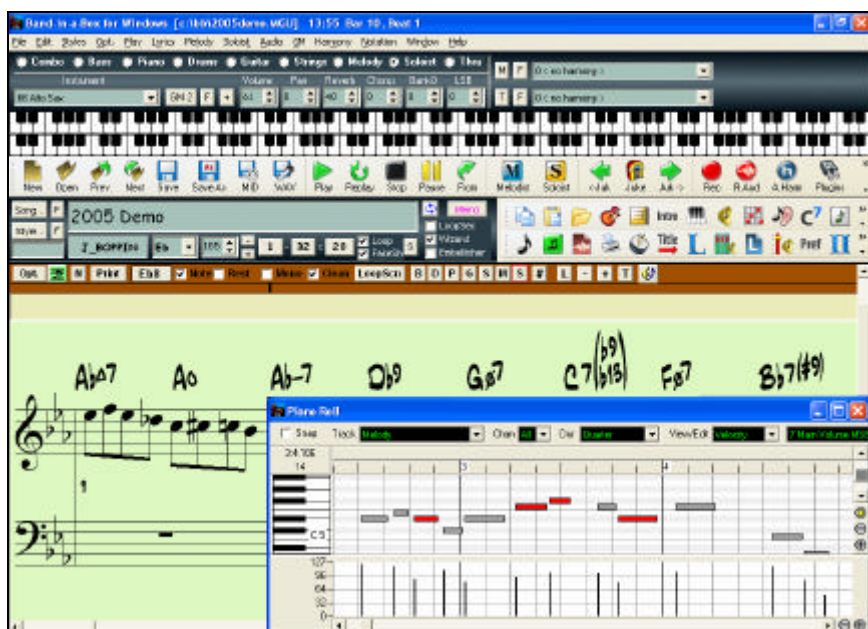


# CopyMe – Piano Volume 1

for

# BAND-IN-A-BOX<sup>®</sup>



© Copyright PG Music Inc. All rights reserved.

# PG Music Inc. License Agreement

CAREFULLY READ THE FOLLOWING TERMS AND CONDITIONS BEFORE COMPLETING THE INSTALLATION OF THIS SOFTWARE. USAGE OF THE SOFTWARE INDICATES YOUR ACCEPTANCE OF THE FOLLOWING TERMS AND CONDITIONS.

## LICENSE

- A. The program may only be used on a single machine.
- B. You may transfer the program and license to another party if the other party agrees to accept the terms of this Agreement. If you transfer the program, you must either transfer all copies, whether in printed or machine readable form, to the same party, or, destroy all copies not transferred. This includes all modifications and/or portions of the program merged into other programs.
- C. You may receive the program in more than one media. Regardless of the type or size of media you receive, you may install or use the media on a single machine.
- D. The program (including any images, "applets," photographs, animations, video, audio, music, and text incorporated into the program) is owned by PG Music Inc. or its suppliers, and is protected by international copyright laws and international treaty provisions.

You may not use, copy, or transfer the program, or any copy, modification or merged portion of the program, in whole or in part, except as expressly provided for in this license. If you transfer possession of any copy, modification or merged portion of the program to another party, your license is automatically terminated.

## LIMITATION OF REMEDIES

PG Music Inc.'s entire liability and your exclusive remedy shall be:

- A. The replacement of any media not meeting PG Music Inc.'s "Limited Warranty," which are returned to PG Music Inc., or an authorized PG Music Inc. dealer, with a copy of your receipt.
- B. If PG Music Inc. or the authorized dealer is unable to deliver replacement media which is free of defects in materials or workmanship, you may terminate this agreement, and your money will be refunded.

In no event will PG Music Inc. be liable to you for any damages, including but not limited to lost profits, lost savings, or other incidental or consequential damages arising out of the use or the inability to use such program, even if PG Music Inc. or an authorized PG Music Inc. dealer has been advised of the possibility of such damages, or for any claim by any other party.

## TRADEMARKS

Band-in-a-Box®, PG Music®, and PowerTracks Pro® are the registered trademarks of PG Music Inc. in the United States, Canada, and other countries. Microsoft® and Windows® are either registered trademarks or trademarks of Microsoft Corporation in the United States and/or other countries. Apple®, the Apple logo, Macintosh®, Mac®, Power Mac®, QuickTime® and True Type® are trademarks of Apple Computer, Inc., registered in the U.S. and other countries. IBM® is the registered trademark of International Business Machines Corporation. Other brands and their products are trademarks or registered trademarks of their respective holders and should be noted as such.

## PATENTS

Band-in-a-Box is protected under US Patent 5990407. The TC-Helicon Harmony feature in Band-in-a-Box is protected under US Patents 5567901, 5641926, 5986198, 34583, 296.80.173.9, P19603819.5, 0368046, 0750776, 6,046,395, and patents pending. Printed in Canada

# Table of Contents

<b>PG MUSIC INC. LICENSE AGREEMENT</b>	<b>2</b>
<b>TABLE OF CONTENTS</b>	<b>3</b>
<b>CHAPTER 1: INTRODUCTION &amp; OVERVIEW</b>	<b>4</b>
Welcome to the CopyMe – Piano Volume 1!	4
<b>Overview</b>	<b>5</b>
<b>CHAPTER 2: INSTALLATION</b>	<b>6</b>
<b>Installing to Windows</b>	<b>6</b>
<b>CHAPTER 3: USING COPYME</b>	<b>7</b>
CopyMe Tips	7
<b>ABOUT MILES BLACK</b>	<b>9</b>
<b>USEFUL BAND-IN-A-BOX KEYSTROKE SHORTCUTS</b>	<b>10</b>
<b>PG MUSIC INC.</b>	<b>11</b>
<b>REGISTRATION FORM</b>	<b>12</b>
<b>How To Register</b>	<b>12</b>

# Chapter 1: Introduction & Overview

## Welcome to the CopyMe – Piano Volume 1!

Thank-you for purchasing this program. You have purchased an exciting add-on program for Band-in-a-Box® that will help your studying and playing of the keyboard.

For the student, this program offers you the advantage of being able to listen to the instructor while you play and practice the files inside Band-in-a-Box.

For the instructor, each of these lessons can be used to augment your teaching.

We hope that you have fun with **CopyMe**.

Have fun!

## Overview

**CopyMe** is an exciting new teaching concept for Band-in-a-Box. Here's how it works: your piano teacher, **Miles Black**, plays a 2-bar piano phrase along with a Band-in-a-Box accompaniment. That 2-bar piano phrase is then followed by 2 bars of the same Band-in-a-Box accompaniment with the piano part silent. This is where you come in... just copy what Miles has played. Once the lesson is complete, Miles explains and plays the next concept, followed again by your turn to play. With the in sync audio track you will hear Miles explain and encourage you as each lesson progresses. And since it's a Band-in-a-Box add-on the notation will be prominently displayed, the lessons can be looped, the tempo can be adjusted to suit your ability—you can even change the key signature to learn each lesson in all 12 keys! What could be better than having your own “on-call” music teacher to explain and demonstrate the lessons.

In Volume 1, the lessons range from very basic harmony to 2-handed accompaniment. **CopyMe – Piano Volume 1 – Basics, Harmony and Comping** is a great place to start learning about harmony and how to play the piano.

There are currently 3 levels in the program.

**Level 1 - Harmony 1** - Contains 50 Lessons

**Level 2 - Harmony 2** - Contains 84 Lessons

**Level 3 - Jazz it Up** - Contains 50 Lessons

**Requirements:** Band-in-a-Box for Windows version 9 or higher

# Chapter 2: Installation

## Installing to Windows

1) Insert “**CopyMe – Piano Volume 1**” CD into your CD-ROM drive. Choose **File | Run** from the Program Manager screen. (or **START | RUN** for Win 95/98 users.)

2) Type **D:\setup.exe** (in the space provided by the “Run...” dialog box, or if your CD-ROM drive is E: then type **E:\setup.exe** instead.

**OR**

As with all Windows programs, you can simply double-click with the Mouse Button on the program setup.exe ICON, or press the ENTER key.

Follow the program prompts, and install the program to your Existing Band-in-a-Box folder, usually **c:\bb**.

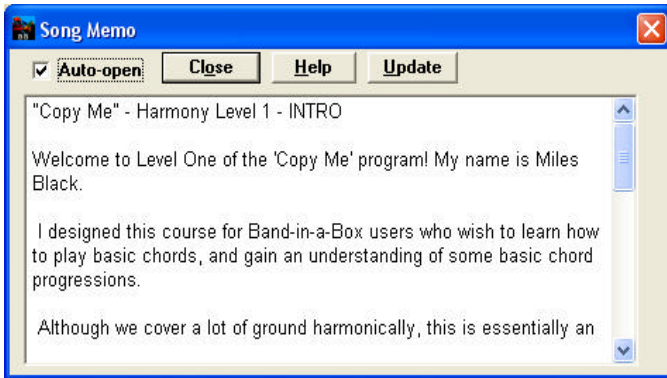
# Chapter 3: Using CopyMe

**With the Band-in-a-Box program open,**

Use the File | Open dialog [F3] and navigate to CopyMe | Level 1 – Harmonies 1 | CM1\_01\_Introduction.MGU.

This is the introduction file for Level one of the Program.

A typical looking Band-in-a-Box song will load up, and a memo similar to the following will appear.



In the background, Band-in-a-Box has loaded an audio file, which is the voice of your instructor, **Miles Black**. Miles will guide you through the lessons.

As soon as you hit the Play Button or [SpaceBar], the song will start playing and Miles' recorded voice will instruct you how to get the most out of each lesson.

## CopyMe Tips

- Use CTRL+SHIFT+F8 and SHIFT+F8 to move to the previous and next songs respectively.
- Your MIDI driver may be too loud or soft with respect to the audio. In that case, open up the Windows Mixer by selecting the Audio Icon on your taskbar, or from within Band-in-a-Box on the toolbar.



Windows Mixer Control Toolbutton

- If you wish to mute the instructor's voice, use the Audio | Mute Audio Menu item.

- It is not recommended that you change the tempos of the files unless you first mute the audio, as the synchronization of the Band-in-a-Box song will be offset.
- You should not change the settings of the Band-in-a-Box files and then save over them, or you may be disappointed that you have to reinstall the program. If you have done this accidentally and know which lessons are affected, check the songlist.doc file in the folder. This file contains all the default tempos and keys for the lessons.



## About Miles Black



Miles is a much sought after session keyboardist, equally accomplished in the Rock, Blues and Jazz genres. He has had a long association with PG Music and is featured on many of our other programs including **The Modern Jazz Pianist**., **The New Age Pianist**, **Beginner Piano Master Class** , **Blues Piano Master Class**, and **Jazz Piano Master Class**.

Miles has become one of Canada's leading jazz pianists and composers. In 1987 he moved to Vancouver, Canada and has enjoyed the respect and support of the local music community. In 1988 he joined Paul Horn's band and toured the Soviet Union, and in 1989 he became a member of the award-winning jazz-fusion recording group Skywalk for which he became a contributing composer. Miles has performed with Skywalk, Chuck Isreals, Max Roach, Fraser MacPherson, PJ Perry, George Robert, Oliver Gannon, Sweets Edison and many others. He has gained prominent stature as a versatile instrumentalist and is much sought after as a leader and as a sideman.

# Useful Band-in-a-Box Keystroke Shortcuts

The CopyMe files are designed to be used repetitively. Here is a list of some of the more useful Band-in-a-Box shortcuts that can help you get the most out of CopyMe.

- PLAYING /STOPPING SONGS                      SPACEBAR
- GO TO THE NEXT/PREVIOUS SONG
- |               |               |
|---------------|---------------|
| Next Song     | SHIFT+F8      |
| Previous Song | CTRL+SHIFT+F8 |
- LOOPING SECTION OF SONG
- |   |     |
|---|-----|
| First highlight a region of a song then | F10 |
|---|-----|
- CHANGING TEMPO
- Change by 5 beats per min. Bracket [and] keys
- TRANSCOPE SONG (Not recommended unless you also mute the audio)
- |                            |            |
|----------------------------|------------|
| Transpose 1 Semitone Up .  | CTRL+ALT+6 |
| Transpose 1 Semitone Down. | CTRL+ALT+5 |

## **PG Music Inc.**

The Blues Guitarist™ is protected by copyright and is the property of PG Music Inc.

All rights reserved.

### **Address for Correspondence:**

**PG MUSIC INC.**  
29 Cadillac Avenue  
Victoria, BC V8Z 1T3  
Canada

### **Contacts:**

**E-mail:** [info@pgmusic.com](mailto:info@pgmusic.com)

**Phone:** toll free 1-800-268-6272,  
1-888-PG-MUSIC (746-8742)  
Or 1-250-475-2874

**Universal International Freephone Service:**  
+ 800-4PGMUSIC (800-4746-8742) where available.

**Fax:** toll free 1-888-475-1444  
Or 1-250-475-2937

Visit our web page at [www.pgmusic.com](http://www.pgmusic.com)

### **Technical Support:**

**Phone:** toll free 1-866-9TECHPG (866-983-2474)  
Or 1-250-475-2708

**E-mail:** [support@pgmusic.com](mailto:support@pgmusic.com)

**Live Internet Chat:** [www.pgmusic.com](http://www.pgmusic.com)



# Registration Form

Please register your program. Registering your PG Music software entitles you to free, unlimited technical support, advance notice of product upgrades, and news about new product releases. If you haven't registered your PG Music software yet, please take a few moments and do so now.

## How To Register

**Mail** to PG Music Inc., 29 Cadillac Avenue, Victoria, BC V8Z 1T3, Canada

**Fax** to 1-250-475-2937 or toll-free to 1-877-475-1444.

**On-line** at [www.pgmusic.com](http://www.pgmusic.com)

**Telephone** 1-250-475-2874, toll-free in North America at 1-800-268-6272, or + 800-4746-8742 where Universal International Freephone Service is available.

Name

---

Address

---

City

---

State/Province

---

Zip/Postal Code

---

Country

---

Telephone number \_\_\_\_\_ Fax  
number \_\_\_\_\_

E-mail address

---

Computer (check):      IBM      MAC      Model

---

Operating system (e.g. Windows 9x, XP; Macintosh OSX) \_\_\_\_\_

What MIDI interface are you using?

\_\_\_\_\_

What primary synth/sound card do you use?

\_\_\_\_\_

Favorite Styles: Jazz \_\_\_ Rock \_\_\_ Pop \_\_\_ Country \_\_\_ Other \_\_\_\_\_

Purchased from

\_\_\_\_\_

Date of purchase

\_\_\_\_\_

Comments/Suggestions \_\_\_\_\_

\_\_\_\_\_

\_\_\_\_\_

\_\_\_\_\_

\_\_\_\_\_