

PHASE ONE 645DF *Quickguide*



Quick Guide Phase One 645DF Camera System

- 01** Content of Kit

- 02** Batteries

- 03** Power On/Off

- 04** Programs/AUTO

- 05** ISO/WB

- 06** Focus

- 07** Install Capture One

- 08** Tethered Shooting

- 09** Memory Card

- 10** Mount/Dismount Lens

- 11** Mount/Dismount Digital Back

- 12** CF – Custom Functions

01 Content of Kit

- Case**
- Phase One 645DF body with P+ Digital Back
 - Phase One 80mm f 2.8 Lens with lens hood and cap
 - Waterproof flexible case in carry-on size (with room for laptop computer*)
 - 4.5 meter FireWire cable
 - Capture One raw workflow software
 - CF card installed*
 - QP reference greycard*
 - Lens cast calibration card*
 - Sensor Cleaning Kit

- Pouch 1 & Pouch 2***
- Digital back duo battery charger
 - Battery charger power supply
 - International outlet adaptors
 - Digital back battery
 - Additional digital back battery*
 - CF card reader*
 - CF card reader cable*
 - Extra camera power module*

- Accessories Box***
- Protection caps body, lens and back
 - Phase One 645DF-HB multi-mount*
 - Lens cleaning cloth*

- Startbox**
- USB key with User Guide, technical documents and more
 - Quick Guide
 - Warranty Brochure

*) Value Added program only

02 Batteries

01. Charge batteries for back



02. Insert battery in back



03. Insert batteries in camera



03 Power On/Off

01. Power on camera



02. Power on back



04 Programs/AUTO

01. Select single or continuous exposure



02. Choose program



05 ISO/WB

01. Finding ISO menu



02. Setting ISO



03. Finding WB menu



04. Setting WB



06 Focus

01a. Focus modes - select on lens.
First, select S or C on body



01b. Focus modes - select on lens.
Secondly, select AF/MF on lens



02. Focus mode selection on body only
- select S/C/M

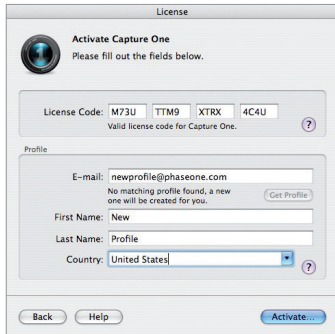


07a Install Capture One for Mac

01. Open License dialogue

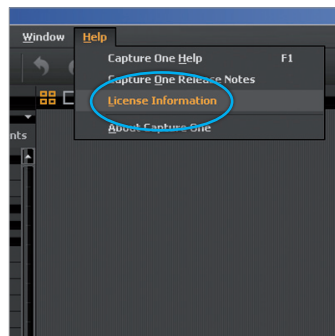


02. Activate License



07b Install Capture One for Windows™

01. Open License dialogue



02. Activate License

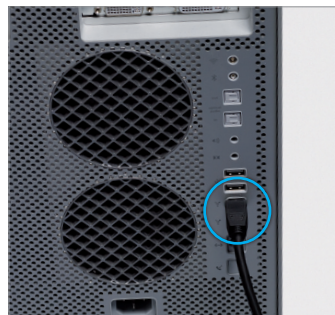


08 Tethered Shooting

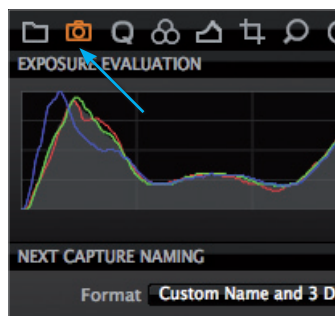
01. Plug-in Fire-Wire cable to digital back



02. Plug-in Fire Wire cable to the back of your computer or laptop



03. Use Capture Tab in Capture One DB



09 Memory Card

01. Opening the hatch to the CF-card



02. Eject CF-card



10a Mount/Dismount Lens

01. Dismount lens



02. Align white marks, mount lens



10b Multi-mount Value Added program

03. Mount multi-mount



04. Align red marks to mount your Carl Zeiss lens



05. Carls Zeiss on Phase One 645DF



11 Mount/Dismount Back

01. How to dismount back



02. DO NOT TOUCH



03. How to mount



PHASE ONE

what the world's best photography is made of

Phase One 645DF Custom Functions overview

12 Custom Functions

- C-00** – Custom functions profile
- C-01** – EV-Steps
- C-02** – Lens Change
- C-03** – Sleep Timer
- C-04** – Battery type
- C-05** – Bracketing
- C-06** – Front/Rear dial
- C-07** – Rear dial in P mode
- C-08** – Dial direction
- C-09** – AEL & AFL button
- C-10** – Releasebutton
- C-11** – AEL function lock/unlock mode

- C-12** – AFL
- C-13** – M-Mode AEL
- C-14** – AF assist setting
- C-15** – Flash sync.
- C-16** – Beep
- C-17** – Shutter TV, Av or P
- C-18** – Shutter in M & X
- C-19** – AF priority
- C-97** – Support for Mamiya ZD backs
- C-98** – Lens Firmware version
- C-99** – Camera body firmware version

C-00 Custom functions profile [SEL]

When "0" has been selected and set, the custom functions can only be adjusted via the P 40+ and P 65+ back menu system, the custom functions can not be edited from the camera if 0 (None) is selected.

To activate a set of Custom Functions, chose C-00 and select the set you want to work on, e.g. chose 2 for Custom Function profile B.

- 0: (default = 0)
- 1: A Profile
- 2: B Profile
- 3: C Profile

C-01 EV-Steps [STEP]

This function is used to set the size of increments concerning the shutter speed, f-number and exposure compensation value.

The 2 setting "STEP 1.0" will provide the full EV steps; this is especially recommended for doing HDR photography made as Bracketing photography.

- 0: STEP 0.3 (1/3 f-STOP: impostazione default)
- 1: STEP 0.5 (1/2 f-STOP)
- 2: STEP 1.0 (1 f-STOP)

C-02 Lens change [IriS]

This function is used to control the initial aperture after changing the lens. The default setting is "0" this will keep the aperture as close to the value of the previous lens as possible.

- 0: Previous f-number
- 1: Aperture open
- 2: Minimum aperture setting

C-03 Sleep timer [HOLD]

This function is used to set the time for sleep mode to be established after the camera's power is turned on. The default setting is 15 seconds. Which is the shortest setting; this will preserve as much energy as possible.

Setting 3 "Disabled" will keep the camera fully powered constantly; this will drain the batteries faster, but might be useful for industrial photography when the camera is working on a power source different than batteries.

For external Phase One digital camera AC adapter consult you dealer for item# 51509 power supply for Phase One 645 AF/DF

- 0: HOLD 15 seconds
- 1: HOLD 30 seconds
- 2: HOLD 60 seconds
- 3: HOLD "ON" ("Always On" on P 40+ & P65+)

C-04 Tipo di batteria [batt]

This function is used to indicate the type of batteries used in the camera, which ensures that the battery status will be displayed correctly on the external LCD panel.

- 0: Alkaline
- 1: Ni-CD, Ni-MH
- 2: Li-ION (ONLY FOR USE WITH VERTICAL GRIP)

C-05 Bracketing [Stno]

Setting number of automatic exposures.

E.g. setting "2" stands for 7 subsequences of exposures and will cover all aperture settings in one bracketing session. The back can have 12-12.5 f-stops in dynamic range and can have 2.5 f-stops digitally in Capture One. This will cover more than enough to do true HDR photography

- 0: 3 Exposures
- 1: 5 Exposures
- 2: 7 Exposures

C-06 Front/Rear dial [dF]

This function is used to interchange the functions of the front and rear dials in the M (manual mode).

- 0: Front dial: TV, rear dial: Av [OF]
- 1: Front dial: AV, rear dial: Tv [On]

C-07 Rear dial in P mode [d_AC]

Initializing the P mode on the rear dial then changing the function to the front dial will cancel out P mode function on the rear dial.

- 0: Enable
- 1: Disable

12 Custom Functions

Due to the limitations of the space on the LCD panel, words and letters are abbreviated

Display examples of the main LCD

<i>ON</i>	→ ON
<i>OFF</i>	→ OFF
<i>Err</i>	→ Error
<i>+</i>	→ + (Plus)
<i>u</i>	→ Under
<i>o</i>	→ Over
<i>n</i>	→ Normal
<i>l oc</i>	→ Lock
<i>SELF</i>	→ Self Timer
<i>bul b</i>	→ bulb
<i>buSy</i>	→ Busy
<i>db</i>	→ Digital Back
<i>LS</i>	→ Lens Shutter
<i>CAP</i>	→ Capture
<i>rP</i>	→ Repeat
<i>! AF</i>	→ Time
<i>batt</i>	→ battery

In custom functions:

<i>HOLD</i>	→ Hold
<i>batt</i>	→ battery
<i>Shot No.</i>	→ Shot No.
<i>dF</i>	→ Dial function
<i>d.AC</i>	→ Dial action
<i>d.d</i>	→ Dial direction
<i>AEFL</i>	→ AE, AF lock
<i>HALF</i>	→ Half press
<i>REL</i>	→ AE lock
<i>AF L</i>	→ AF lock
<i>ONEP</i>	→ One-push exposure
<i>AF.L</i>	→ AF assist light
<i>FLSY</i>	→ Flash sync
<i>bu</i>	→ Buzzer
<i>Sh.P</i>	→ Shutter in Program
<i>Sh</i>	→ Shutter in Manual
<i>AF.2</i>	→ AF second mode

C-08 Dial Direction [d_d]

This function determines the direction in which the electronic dial can rotate in order to increase and decrease the shutter speed, the f-number and exposure compensation.

- 0: CW: Decrease [OF]
- 1: CW: Increase [On]

C-09 AEL & AFL button [AEFL]

This function enables the user to interexchange the functions AEL with AFL.

- 0: Default setting (front: AFL, rear: AEL) [OF]
- 1: Switched (front AEL, rear: AFL) [On]

C-10 Release button [HALF]

This function is used to set the AE lock and AF operations when the shutter release button is half-pressed.

Setting 1 is recommended for fast photography e.g. Reportage. Setting 2 is recommended for e.g. Repro photography, or other controlled areas of photography.

- 0: AF operation (default setting)
- 1: AF & AE operation
- 2: Only shutter release

C-11 AEL function lock/unlock mode [AEL]

This function is using the AEL button to lock AE. As default setting, when the AEL button is pressed, AE is locked.

At setting "0"; pressing the button again releases the AE lock. At setting "1" continues to be locked even when other shooting are being taken. At setting "2", AE lock is kept while the AE lock button is being pressed.

- 0: One shot
- 1: Continuous
- 2: While pressed

C-12 AFL [AFL]

This function enables you to set the AF lock method. When pressing the auto focus lock (AFL) the autofocus (AF) is locked. Setting "0" ensures that the AF lock is activated pressing the auto-lock button once and it is deactivated pressing it one more time.

The setting "1" is released when the shutter is triggered or the camera is turned off. The setting "2", the AE lock is only active while the AE lock button is being pressed.

- 0: While pressed (default setting)
- 1: AF operation
- 2: Continuous

C-13 M-mode AEL [OnEP]

When using M (manual mode), you can choose if the auto exposure lock (AEL) button should change between using the shutter speed or aperture value by pressing the AEL button.

- 0: Shutter speed shift [tv]
- 1: Aperture value shift [Av]
- 2: No [Sin funcionamiento]

C14 AF assist setting [AF_L]

If the object is in a too dark environment, so that the camera cannot focus automatically (AF) its auxiliary light will fire automatically. In some situations the light can be annoying for the motive, therefore this function can be used to prevent the AF auxiliary light from firing.

- 0: On [On]
- 1: Off [OF]

C-15 Flash sync. [FLSY]

When shooting a moving object with flash you can set the synchronization timing. This allows you to have the flash fire at the beginning of the exposure or at the end of the exposure.

- 0: First (default setting)
- 1: Second

C-16 Beep [bu]

When the shutter release button is pressed a beep sounds when the AF is set.

- 0: ON (AF) (Default setting)
- 1: ON
- 2: OFF

C-17 Shutter TV, AV & P [Sh_P]

When using P, Av or Tv mode and the leaf shutter lens is attached but you force usage of the focal plane shutter or vice versa.

- 0: Mixed. Default (Focal Plane shutter operation at < 1S)
- 1: Leaf shutter >1/125
- 2: Focal plane shutter < 1/25

C-18 Shutter in M & X [Sh]

This function can be used, when using M & X mode and the leaf shutter lens is attached but you would like to use the focal plane shutter or vice versa.

- 0: Mixed. Default (Focal Plane shutter operation at < 1S)
- 1: Leaf shutter
- 2: Focal plane shutter

C-19 AF Priority [AF_2]

Accuracy of auto-focusing priority (default setting) or speed priority can be decided.

The Speed priority is adaptive on precision to provide the fast possible speed and still keeping the shot perfectly sharp, the speed may therefore vary depending on the usage of a high or low Aperture value.

- 0: Speed (default setting)
 - 1: Accuracy
- Recommended for lenses with long focal length

C-97 Support for Mamiya ZD backs

This function should ONLY be activated when shooting on a Mamiya ZD back.

- 0: Default setting NO Mamiya ZD back on the camera body
- 1: Mamiya ZD back on camera body

C-98 Lens firmware version

The current firmware version can be checked.

C-99 Body firmware version

The current firmware version of the body can be checked.