

Register your product and get support at

[www.philips.com/welcome](http://www.philips.com/welcome)

AD7050W/37



# User manual

**PHILIPS**



*Thank you for choosing Philips.*

## **Need help fast?**

*Read your Quick Start Guide and/or  
User Manual first for quick tips  
that make using your Philips product  
more enjoyable.*

*If you have read your instructions  
and still need assistance,  
you may access our online help at*

***www.philips.com/welcome***  
***or call***

***1-888-PHILIPS (744-5477)***  
***while with your product.***  
***(and Model / Serial number)***

**Register online at [www.philips.com/welcome](http://www.philips.com/welcome) today to  
get the very most from your purchase.**

Registering your model with PHILIPS makes you eligible for all of the valuable benefits listed below, so don't miss out. Register online at [www.philips.com/welcome](http://www.philips.com/welcome) to ensure:

### **\*Product Safety Notification**

By registering your product, you'll receive notification - directly from the manufacturer.

### **\*Additional Benefits**

Registering your product guarantees that you'll receive all of the privileges to which you're entitled, including special money-saving offers.

# PHILIPS

***Congratulations on your purchase,  
and welcome to the "family!"***

#### **Dear PHILIPS product owner:**

Thank you for your confidence in PHILIPS. You've selected one of the best-built, best-backed products available today. We'll do everything in our power to keep you happy with your purchase for many years to come.

As a member of the PHILIPS "family," you're entitled to protection by one of the most comprehensive warranties in the industry. What's more, your purchase guarantees you'll receive all the information and special offers for which you qualify, plus easy access to accessories from our convenient home shopping network.

Most importantly, you can count on our uncompromising commitment to your total satisfaction.


All of this is our way of saying welcome - and thanks for investing in a PHILIPS product.


**P.S. To get the most from your PHILIPS purchase, be sure to register online at:**

**[www.philips.com/welcome](http://www.philips.com/welcome)**

Know these  
**safety** symbols



 This "bolt of lightning" indicates uninsulated material within your unit may cause an electrical shock. For the safety of everyone in your household, please do not remove product covering.

 The "exclamation point" calls attention to features for which you should read the enclosed literature closely to prevent operating and maintenance problems.

**WARNING:** To reduce the risk of fire or electric shock, this apparatus should not be exposed to rain or moisture and objects filled with liquids, such as vases, should not be placed on this apparatus.

**CAUTION:** To prevent electric shock, match wide blade of plug to wide slot, fully insert.

**ATTENTION:** Pour éviter les choc électriques, introduire la lame la plus large de la fiche dans la borne correspondante de la prise et pousser jusqu'au fond.

#### **For Customer Use**

Enter below the Serial No. which is located on the rear of the cabinet. Retain this information for future reference.

Model No. \_\_\_\_\_  
Serial No. \_\_\_\_\_

**PHILIPS**

Visit our World Wide Web Site at <http://www.philips.com/welcome>

# PHILIPS LIMITED WARRANTY

## ONE (1) YEAR

### WARRANTY COVERAGE:

PHILIPS warranty obligation is limited to the terms set forth below.

### WHO IS COVERED:

Philips warrants the product to the original purchaser or the person receiving the product as a gift against defects in materials and workmanship as based on the date of original purchase ("Warranty Period") from an Authorized Dealer. The original sales receipt showing the product name and the purchase date from an authorized retailer is considered such proof.

### WHAT IS COVERED:

The Philips warranty covers new products if a defect in material or workmanship occurs and a valid claim is received by Philips within the Warranty Period. At its option, Philips will either (1) repair the product at no charge, using new or refurbished replacement parts, or (2) exchange the product with a product that is new or which has been manufactured from new, or serviceable used parts and is at least functionally equivalent or most comparable to the original product in Philips current inventory, or (3) refund the original purchase price of the product. Philips warrants replacement products or parts provided under this warranty against defects in materials and workmanship from the date of the replacement or repair for ninety (90) days or for the remaining portion of the original product's warranty, whichever provides longer coverage for you. When a product or part is exchanged, any replacement item becomes your property and the replaced item becomes Philips' property. When a refund is given, your product becomes Philips' property.

**Note: Any product sold and identified as refurbished or renewed carries a ninety (90) day limited warranty.**

**Replacement product can only be sent if all warranty requirements are met. Failure to follow all requirements can result in delay.**

### WHAT IS NOT COVERED - EXCLUSIONS AND LIMITATIONS:

This Limited Warranty applies only to the new products manufactured by or for Philips that can be identified by the trademark, trade name, or logo affixed to it. This Limited Warranty does not apply to any non-Philips hardware product or any software, even if packaged or sold with the product. Non-Philips manufacturers, suppliers, or publishers may provide a separate warranty for their own products packaged with the bundled product.

Philips is not liable for any damage to or loss of any programs, data, or other information stored on any media contained within the product, or any non-Philips product or part not covered by this warranty. Recovery or reinstallation of programs, data or other information is not covered under this Limited Warranty.

This warranty does not apply (a) to damage caused by accident, abuse, misuse, neglect, misapplication, or non-Philips product, (b) to damage caused by service performed by anyone other than Philips or Philips Authorized Service Location, (c) to a product or a part that has been modified without the written permission of

Philips, or (d) if any Philips serial number has been removed or defaced, or (e) product, accessories or consumables sold "AS IS" without warranty of any kind by including refurbished Philips product sold "AS IS" by some retailers.

### This Limited Warranty does not cover:

- Shipping charges to return defective product to Philips.
- Labor charges for installation or setup of the product, adjustment of customer controls on the product, and installation or repair of antenna/signal source systems outside of the product.
- Product repair and/or part replacement because of improper installation or maintenance, connections to improper voltage supply, power line surge, lightning damage, retained images or screen markings resulting from viewing fixed stationary content for extended periods, product cosmetic appearance items due to normal wear and tear, unauthorized repair or other cause not within the control of Philips.
- Damage or claims for products not being available for use, or for lost data or lost software.
- Damage from mishandled shipments or transit accidents when returning product to Philips.
- A product that requires modification or adaptation to enable it to operate in any country other than the country for which it was designed, manufactured, approved and/or authorized, or repair of products damaged by these modifications.
- A product used for commercial or institutional purposes (including but not limited to rental purposes).
- Product lost in shipment and no signature verification receipt can be provided.
- Failure to operate per Owner's Manual.

### TO OBTAIN ASSISTANCE IN THE U.S.A., PUERTO RICO, OR U.S. VIRGIN ISLANDS...

Contact Philips Customer Care Center at:  
1-888-PHILIPS (1-888-744-5477)

### TO OBTAIN ASSISTANCE IN CANADA...

1-800-661-6162 (French Speaking)  
1-888-PHILIPS (1-888-744-5477) - (English or Spanish Speaking)

REPAIR OR REPLACEMENT AS PROVIDED UNDER THIS WARRANTY IS THE EXCLUSIVE REMEDY FOR THE CONSUMER. PHILIPS SHALL NOT BE LIABLE FOR ANY INCIDENTAL OR CONSEQUENTIAL DAMAGES FOR BREACH OF ANY EXPRESS OR IMPLIED WARRANTY ON THIS PRODUCT. EXCEPT TO THE EXTENT PROHIBITED BY APPLICABLE LAW, ANY IMPLIED WARRANTY OF MERCHANTABILITY OR FITNESS FOR A PARTICULAR PURPOSE ON THIS PRODUCT IS LIMITED IN DURATION TO THE DURATION OF THIS WARRANTY.

Some states do not allow the exclusions or limitation of incidental or consequential damages, or allow limitations on how long an implied warranty lasts, so the above limitations or exclusions may not apply to you.

*This warranty gives you specific legal rights. You may have other rights which vary from state/province to state/province.*

# Contents

---

<b>1</b>	<b>Important</b>	<b>4</b>
	Safety	4
	Notice	5

---

<b>2</b>	<b>Your Entertainment System</b>	<b>7</b>
	Introduction	7
	What's in the box	7
	What else you need	7
	Overview of the main unit	8
	Get started to use AirPlay	8

---

<b>3</b>	<b>Prepare</b>	<b>9</b>
	Connect power	9
	Turn AD7050W on	9

---

<b>4</b>	<b>Connect to your home Wi-Fi network for AirPlay</b>	<b>10</b>
	Method 1: Use iOS5 Wi-Fi network login sharing	10
	Method 2: Connect to a WPS router	11
	Method 3: Connect to a non-WPS Wi-Fi router	12

---

<b>5</b>	<b>Play</b>	<b>19</b>
	Stream audio from your iTunes music library to AD7050W	19
	Control play	21
	Use advanced sound settings	21
	Play/charge your iPod/iPhone/iPad through USB socket	21
	Play from an external device	22

---

<b>6</b>	<b>Update firmware</b>	<b>23</b>
	Download the update file	23
	Update from the configuration page	23

---

<b>7</b>	<b>Product information</b>	<b>25</b>
	Specifications	25

---

<b>8</b>	<b>Troubleshooting</b>	<b>26</b>
----------	------------------------	-----------

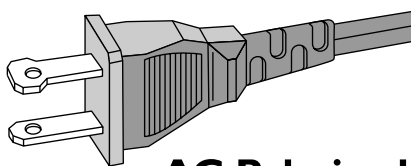
---

# 1 Important

## Safety

### Important Safety Instructions

- ① Read these instructions.
- ② Keep these instructions.
- ③ Heed all warnings.
- ④ Follow all instructions.
- ⑤ Do not use this apparatus near water.
- ⑥ Clean only with dry cloth.
- ⑦ Do not block any ventilation openings. Install in accordance with the manufacturer's instructions.
- ⑧ Do not install near any heat sources such as radiators, heat registers, stoves, or other apparatus (including amplifiers) that produce heat.
- ⑨ Do not defeat the safety purpose of the polarized or grounding-type plug. A polarized plug has two blades with one wider than the other. A grounding type plug has two blades and a third grounding prong. The wide blade or the third prong are provided for your safety. If the provided plug does not fit into your outlet, consult an electrician for replacement of the obsolete outlet.



**AC Polarized Plug**

- ⑩ Protect the power cord from being walked on or pinched, particularly at plugs, convenience receptacles, and the point where they exit from the apparatus.
- ⑪ Only use attachments/accessories specified by the manufacturer.
- ⑫ Use only with the cart, stand, tripod, bracket, or table specified by the manufacturer or sold with the apparatus. When a cart is used, use caution when moving the cart/apparatus combination to avoid injury from tip-over.



- ⑬ Unplug this apparatus during lightning storms or when unused for long periods of time.
- ⑭ Refer all servicing to qualified service personnel. Servicing is required when the apparatus has been damaged in any way, such as power-supply cord or plug is damaged, liquid has been spilled or objects have fallen into the apparatus, the apparatus has been exposed to rain or moisture, does not operate normally, or has been dropped.
- ⑮ Apparatus shall not be exposed to dripping or splashing, keep it away from direct sunlight, naked flames or heat.

#### Warning

- Never remove the casing of this apparatus.
- Never lubricate any part of this apparatus.
- Never place this apparatus on other electrical equipment.
- Keep this apparatus away from direct sunlight, naked flames or heat.
- Ensure that you always have easy access to the power cord, plug or adaptor to disconnect this apparatus from the power.

Risk of overheating! Never install this apparatus in a confined space. Always leave a space of at least four inches around this apparatus for ventilation. Ensure curtains or other objects never cover the ventilation slots on this apparatus.

---

## Notice

---

### Notice of compliance

#### Modifications

The user is cautioned that changes or modifications not expressly approved by the party responsible for compliance could void the user's authority to operate the equipment.

#### FCC & RSS compliance statement

This device complies with Part 15 of the FCC Rules and Industry Canada licence-exempt RSS standard(s). Operation is subject to the following two conditions:

- ① **This device may not cause harmful interference, and**
- ② **This device must accept any interference received, including interference that may cause undesired operation.**

#### FCC Radiation Exposure Statement

This equipment complies with FCC's and IC's RF radiation exposure limits set forth for an uncontrolled environment. The antenna(s) used for this transmitter must be installed and operated to provide a separation distance of at least 20 cm from all persons and must not be collocated or operating in conjunction with any other antenna or transmitter. Installers must ensure that 20cm separation distance will be maintained between the device (excluding its handset) and users.

#### FCC rules

This equipment has been tested and found to comply with the limits for a Class B digital device, pursuant to Part 15 of the FCC Rules. These limits are designed to provide reasonable protection against harmful interference in a residential installation. This equipment generates, uses and can radiate radio frequency energy and, if not installed and used in accordance with the instructions, may cause harmful interference to radio communications. However, there is no guarantee that interference will not occur in a particular installation.

If this equipment does cause harmful interference to radio or television reception, which can be determined by turning the equipment off and on, the user is encouraged to try to correct the interference by one or more of the following measures:

- Reorient or relocate the receiving antenna.
- Increase the separation between the equipment and receiver.
- Connect the equipment into an outlet on a circuit different from that to which the receiver is connected.
- Consult the dealer or an experienced radio/TV technician for help.

#### Canada:

This Class B digital apparatus complies with Canadian ICES-003.

---

### Disposal of your old product

Your product is designed and manufactured with high quality materials and components, which can be recycled and reused.

Never dispose of your product with other household waste. Please inform yourself about the local rules on the separate collection of electrical and electronic products and batteries. The correct disposal of these products helps

prevent potentially negative consequences on the environment and human health.

Please visit [www.recycle.philips.com](http://www.recycle.philips.com) for additional information on a recycling center in your area.

### Environmental information

All unnecessary packaging has been omitted. We have tried to make the packaging easy to separate into three materials: cardboard (box), polystyrene foam (buffer) and polyethylene (bags, protective foam sheet.)

Your system consists of materials which can be recycled and reused if disassembled by a specialized company. Please observe the local regulations regarding the disposal of packaging materials, exhausted batteries and old equipment.



“Made for iPod,” “Made for iPhone,” and “Made for iPad” mean that an electronic accessory has been designed to connect specifically to iPod, iPhone, or iPad, respectively, and has been certified by the developer to meet Apple performance standards. Apple is not responsible for the operation of this device or its compliance with safety and regulatory standards. Please note that the use of this accessory with iPod, iPhone, or iPad may affect wireless performance.

AirPlay, iPod, and iPhone are trademarks of Apple Inc., registered in the U.S. and other countries. iPad is a trademark of Apple Inc.

### Class II equipment symbol:



CLASS II apparatus with double insulation, and no protective earth provided.

#### Note

- The type plate is located on the bottom of the apparatus.



## 2 Your Entertainment System

Congratulations on your purchase, and welcome to Philips! To fully benefit from the support that Philips offers, register your product at [www.philips.com/welcome](http://www.philips.com/welcome).

If you contact Philips, you will be asked for the model and serial number of this apparatus. The model number and serial number are on the bottom of the apparatus. Write the numbers here:

Model No. \_\_\_\_\_

Serial No. \_\_\_\_\_

### Introduction

Apple AirPlay technology enables you to play your iTunes music library, hosted on a Mac, PC, iPhone, iPod touch, or iPad on any AirPlay-enabled device (for example, your AD7050W) connected to the Wi-Fi network.

With an AirPlay-enabled device (for example, your AD7050W), you can:

- stream audio from your iTunes music library to any room in your house
- choose which AirPlay-enabled devices you want to play music on (if you have more than one such devices in your house)
- stream audio to multiple AirPlay-enabled devices at the same time (from the iTunes music library on your PC/Mac only)



#### Tip

- Please visit [www.philips.com/welcome](http://www.philips.com/welcome) for information about more Philips AirPlay-enabled devices.

With AD7050W, you can also:

- charge your iPod/iPhone/iPad through the USB socket with an Apple USB cable (not supplied).
- play your iTunes music library on your iPod/iPhone/iPad through the USB socket directly while charging.
- play music from other audio devices through the **MP3-LINK** socket.

### What's in the box

Check and identify the contents of your package:

- Main unit (with a built-in Wi-Fi module)
- 1 x AC power adapter
- 1 x MP3 link cable
- User manual (in CD-ROM)
- Quick start guide

### What else you need

To stream audio wirelessly by AirPlay, you need:

- A Wi-Fi certified router
- A host for your iTunes music library, for example, an iPod touch/iPhone/iPad installed with iOS 4.3 (or later) or a Wi-Fi enabled PC/Mac installed with iTunes 10 (or later)

Your AD7050W should be connected to the same local network as your iTunes host device through the Wi-Fi router.

---

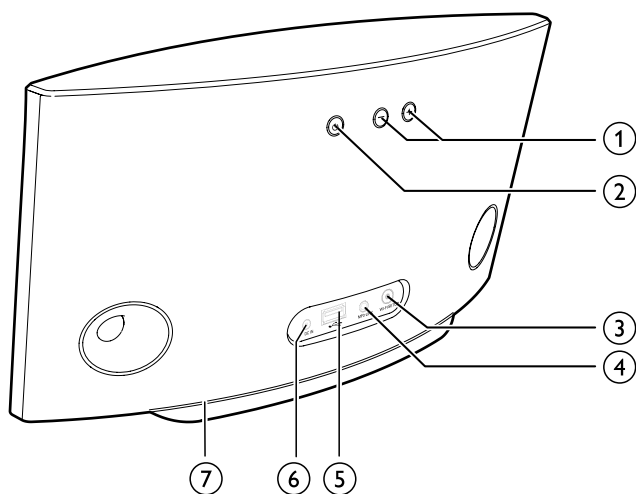
## List of compatible iTunes host devices for AirPlay

In terms of AirPlay, AD7050W is compatible with:


- a Wi-Fi enabled PC/Mac installed with iTunes 10 (or later); and
- the following iPod/iPhone/iPad models installed with iOS 4.3 (or later):
  - iPad 2
  - iPad
  - iPhone 4S
  - iPhone 4
  - iPhone 3GS
  - iPhone 3G
  - iPod touch (2nd, 3rd, and 4th generation)

---

## Overview of the main unit



- ① +/-
  - Adjust volume.
  - Press and hold both buttons to reset the unit.
- ② ⏻
  - Press and hold to turn the unit on/off.
  - Press to turn the bottom light on/off.

- ③ **WI-FI SETUP** button/indicator
  - Connect the unit to a Wi-Fi network.
  - Show the Wi-Fi connection status of the unit.
- ④ **MP3-LINK**
  - Connect an external audio player through the supplied MP3 link cable.
- ⑤ **USB** 
  - Connect an iPod/iPhone/iPad through an Apple USB cable (not supplied).
- ⑥ **DC IN**
  - Connect the power adaptor.
- ⑦ **Bottom light**

---

## Get started to use AirPlay

To get started with AirPlay, you need to:

- 1 Upgrade your iPod touch/iPhone/iPad to the latest iOS version (iOS 4.3 or later).
  - Or install the latest version of iTunes (iTunes 10 or later) on your PC/Mac.
- 2 Connect power to AD7050W, then turn it on (see 'Prepare' on page 9).
- 3 Connect AD7050W to your existing home Wi-Fi network (see 'Connect to your home Wi-Fi network for AirPlay' on page 10).
- 4 Make sure that your iPod touch/iPhone/iPad or PC/Mac are also connected to the same Wi-Fi network.

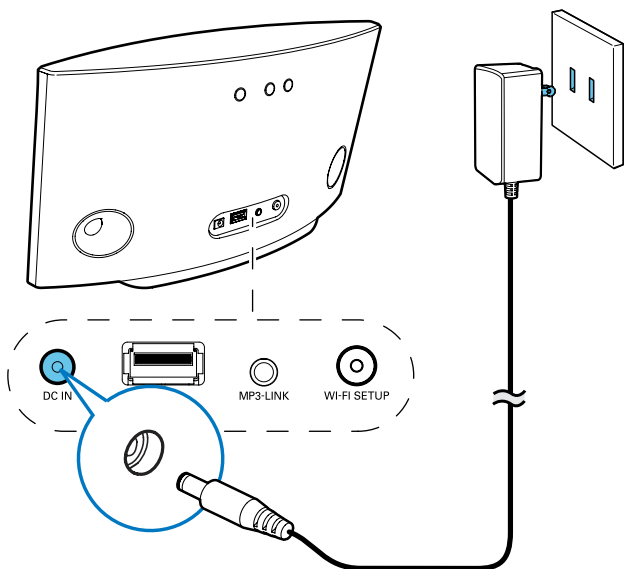
# 3 Prepare

Always follow the instructions in this chapter in sequence.

## Connect power

### ! Caution

- Risk of product damage! Make sure that the power supply voltage matches the voltage printed on the bottom of the unit.
- Risk of electric shock! When you unplug the AC adaptor, always pull the plug from the socket. Never pull the cord.
- Before you connect the AC adaptor, make sure that you have completed all the other connections.



- Connect the AC power cord to
  - the **DC IN** socket on the back of the unit.
  - the wall power socket.

## Turn AD7050W on

- 1 Press and hold  $\phi$  on the back to turn the unit on.
  - 2 Wait for successful boot-up of the unit.
    - ↳ The boot-up takes up to 35 seconds.
    - ↳ During boot-up, the **Wi-Fi SETUP** indicator on the back of the unit blinks yellow.
    - ↳ After boot-up, for first-time setup, the **Wi-Fi SETUP** indicator turns solid yellow, and the unit enters Assisted Wi-Fi Setup mode automatically.
- To turn the unit off, press and hold  $\phi$  again.
  - To turn the unit on again, press and hold  $\phi$  once more.

### \* Tip

- If the unit stays idle for more than 30 minutes, it turns off automatically.

# 4 Connect to your home Wi-Fi network for AirPlay



To connect AD7050W to your existing home Wi-Fi network, you need to apply your home Wi-Fi settings to AD7050W.

Choose your best setup method based on the preconditions listed below.

Precondition	Setup method
You have an iPod touch/iPhone/iPad upgraded to iOS 5.0 or later.	Choose method 1 (recommended) (see 'Method 1: Use iOS5 Wi-Fi network login sharing' on page 10).
Your Wi-Fi router is enabled with WPS (Wi-Fi Protected Setup) and supports PBC (Push Button Connection).	Choose method 2 (see 'Method 2: Connect to a WPS router' on page 11).

You have a Wi-Fi enabled device with an Internet browser, such as an iPod touch/iPhone/iPad or a Wi-Fi enabled PC/Mac.

Choose method 3 (see 'Method 3: Connect to a non-WPS Wi-Fi router' on page 12).

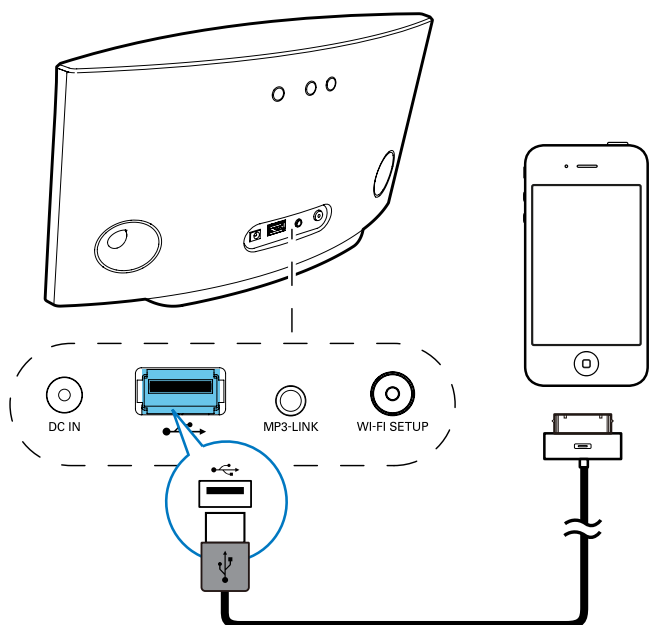
Before connection of AD7050W to you home Wi-Fi network, make sure that:

- ① **your Wi-Fi router is powered on and working properly.**
- ② **AD7050W has been powered on and booted up successfully (see 'Turn AD7050W on' on page 9).**

Once connected successfully, AD7050W will remember your home Wi-Fi settings. Then you can enjoy AirPlay whenever AD7050W is powered on and connected to your home Wi-Fi network automatically.

## Method 1: Use iOS5 Wi-Fi network login sharing

- 1 Connect your iPod touch/iPhone/iPad to your home Wi-Fi network.
- 2 Connect an Apple USB cable (not supplied) to:
  - the **USB** socket on the back of AD7050W.
  - the dock connector on your iPod/iPhone/iPad.



- 3 Press **WI-FI SETUP** on the back of AD7050W.  
 ↳ The following dialog box is displayed.



- 4 Tap **ALLOW** (allow) to share your Wi-Fi settings with AD7050W.  
 ↳ After a while, the indicator on the back of AD7050W turns solid green, and the unit beeps.  
 ↳ AD7050W is connected to your existing home Wi-Fi network successfully.

## Method 2: Connect to a WPS router

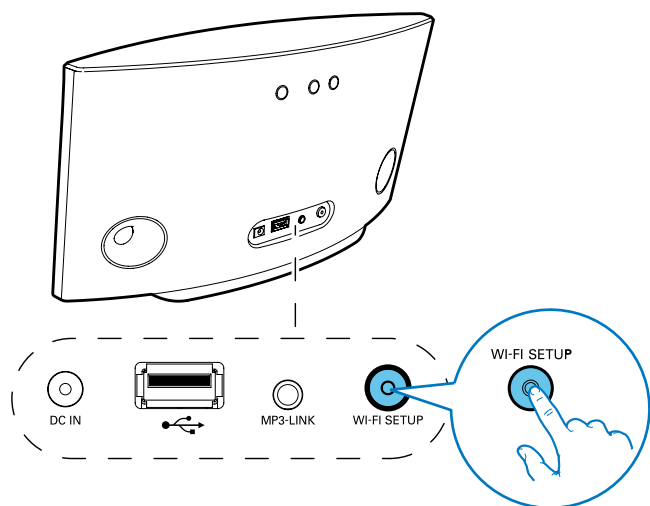
### Note

- Before you press any button on AD7050W, make sure that AD7050W has been booted up successfully (see 'Turn AD7050W on' on page 9).

- 1 Press the WPS button on your home Wi-Fi router.



- 2 Shortly after step 1, press **WI-FI SETUP** on the back of AD7050W.  
 ↳ The **WI-FI SETUP** indicator blinks yellow and green alternately.  
 ↳ Within 2 minutes, the **WI-FI SETUP** indicator turns solid green, and the unit beeps.  
 ↳ AD7050W is connected to your home Wi-Fi network successfully.



### Tip

- For some Wi-Fi routers, you may need to hold the WPS button for Wi-Fi connection or enable the WPS PBC function from the router configuration pages. See the user manuals of the specific routers for details.
- If the **Wi-Fi SETUP** indicator on AD7050W stays yellow, it means that the Wi-Fi connection has failed. Please wait for 2 minutes and try again. If the problem remains, try to set up the Wi-Fi connection manually (see 'Method 3: Connect to a non-WPS Wi-Fi router' on page 12).
- If the Wi-Fi connection fails again, restart AD7050W, and then try again.

## Method 3: Connect to a non-WPS Wi-Fi router

### Note

- You can also follow the procedures below to connect AD7050W to a WPS router manually.

To connect AD7050W to a Wi-Fi router manually, you need access to AD7050W's built-in configuration web page for change of its internal Wi-Fi settings. To do so, you need a Wi-Fi enabled device with an Internet browser for temporary Wi-Fi connection to AD7050W. The Wi-Fi enabled device can be an iPod touch/iPhone/iPad or a Wi-Fi enabled PC/Mac.

Follow the sequence below for connection of AD7050W to a non-WPS Wi-Fi router:

- 1 Collect settings of your home Wi-Fi router and write down on paper for use during AD7050W Wi-Fi setup (see 'Collect settings of your home Wi-Fi router' on page 12).
- 2 Make sure that AD7050W is in Assisted Wi-Fi Setup mode. If not, switch AD7050W to Assisted Wi-Fi Setup mode (see 'Switch AD7050W to Assisted Wi-Fi Setup mode' on page 13).
  - ↳ A new Wi-Fi network created by AD7050W will appear, with the network name (SSID) of **Philips AD7050W**.
- 3 Connect your Wi-Fi enabled device to the newly created Wi-Fi network temporarily (see 'Connect your Wi-Fi enabled device to the newly created Wi-Fi network' on page 13).
- 4 Open the built-in web page of AD7050W with the Internet Browser of your Wi-Fi enabled device (see 'Open the built-in web page of AD7050W' on page 15).
- 5 Change the internal Wi-Fi settings of AD7050W based on the settings you wrote on paper at step 1 (see 'Change the internal Wi-Fi settings of AD7050W' on page 16).
- 6 Restore your Wi-Fi enabled device back to your existing home Wi-Fi settings (see 'Restore your Wi-Fi enabled device back to your existing home Wi-Fi setting' on page 17).

## Collect settings of your home Wi-Fi router

### Note

- Always consult the user manual of your home Wi-Fi router for detailed instructions.

- 1 Connect your Wi-Fi enabled device to your existing home Wi-Fi network.
- 2 Launch the Internet browser (for example, Apple Safari or Microsoft Internet Explorer) on your Wi-Fi enabled device.
- 3 Open the configuration page of your home Wi-Fi router.
- 4 Find the Wi-Fi settings tab and write down the following information on paper:
  - (A) Network name (SSID)
  - (B) Wi-Fi security mode (usually WEP, WPA or WPA2 if enabled)
  - (C) Wi-Fi password (if Wi-Fi security is enabled)
  - (D) DHCP mode (enabled or disabled)
  - (E) Static IP address settings (if DHCP mode is disabled)

- ↳ A new Wi-Fi network created by AD7050W will appear, with the network name (SSID) of **Philips AD7050W**.
- ↳ It may take up to 45 seconds for successful creation of this new Wi-Fi network.

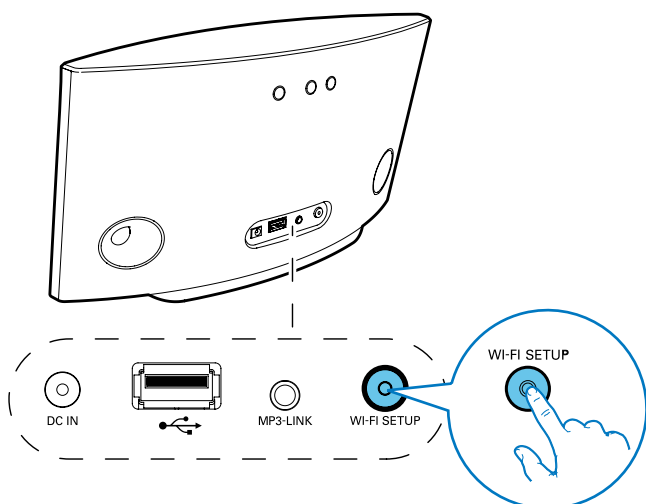
#### Note

- After you finish manual Wi-Fi setup for AD7050W, the new Wi-Fi network created by AD7050W will disappear.
- If you fail to enter Assisted Wi-Fi Setup mode, power off AD7050W and power on it, then try again after successful boot-up.
- Make sure that there are no other Philips AirPlay-enabled devices in Assisted Wi-Fi Setup mode at the same time. Multiple Wi-Fi networks created this way may interfere with each other.

## Switch AD7050W to Assisted Wi-Fi Setup mode

#### Note

- Before you press any button on AD7050W, make sure that AD7050W has been booted up successfully (see 'Turn AD7050W on' on page 9).



- Press **Wi-Fi SETUP** on the back of AD7050W.
  - ↳ The **Wi-Fi SETUP** indicator turns solid yellow.

## Connect your Wi-Fi enabled device to the newly created Wi-Fi network

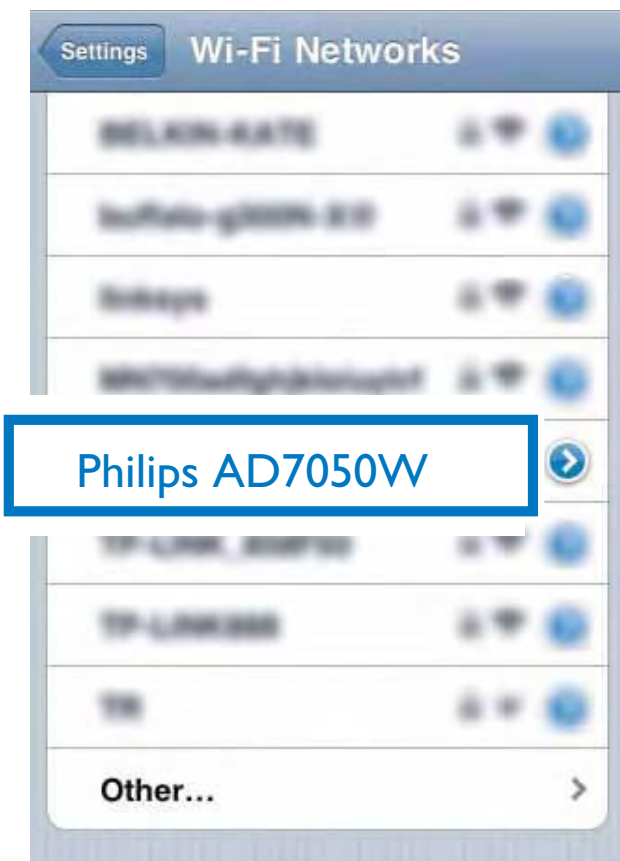
The new Wi-Fi network created by AD7050W only allows access of one Wi-Fi enabled device. To avoid interference from any other Wi-Fi devices, you are recommended to temporarily disable the Wi-Fi function on your other Wi-Fi devices.


### Option 1: Use your iPod touch/iPhone/iPad

- 1 Select **Settings** -> **Wi-Fi** on your iPod touch/iPhone/iPad.



2 Select **Philips AD7050W** from the list of available networks.



3 Wait until successful Wi-Fi connection on your iPod touch/iPhone/iPad.  
 ↳  is displayed at the upper left corner of your iPod touch/iPhone/iPad.

 Tip

- If **Philips AD7050W** is not in the list, try to scan the available Wi-Fi networks again.

Option 2: Use your Wi-Fi enabled PC/Mac

 Note

- See the user manual of your PC/Mac for how to connect your PC/Mac to a Wi-Fi network.
- During Wi-Fi network connection, do not connect any network cable to your PC/Mac.

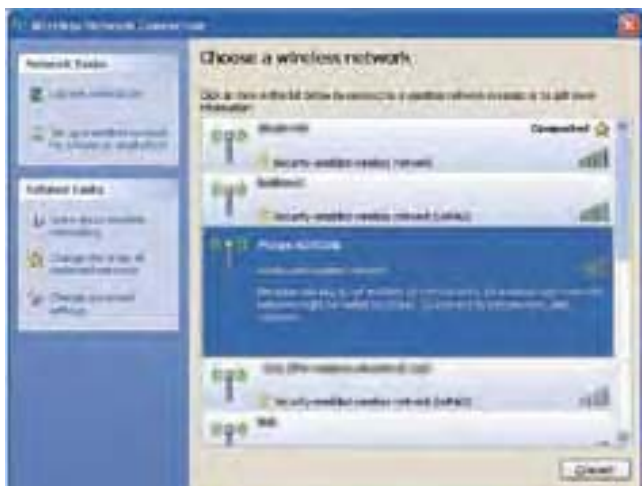
1 Open the Wi-Fi setup tool or control panel on your PC/Mac.

2 Scan the available Wi-Fi networks.

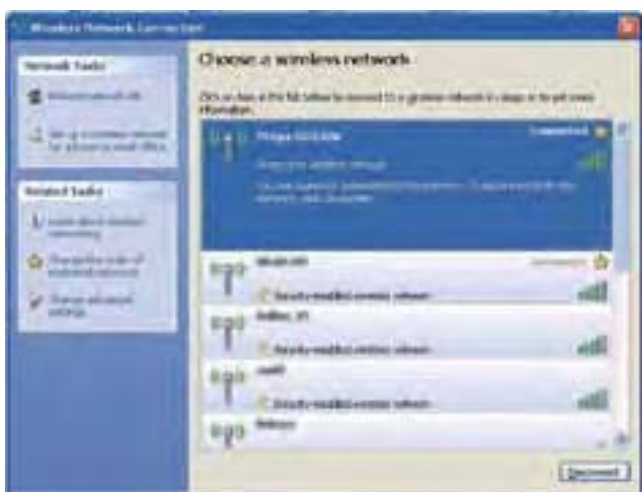


3 Select **Philips AD7050W** from the list of available networks.





- 4 Wait until successful Wi-Fi connection on your PC/Mac.



Tip

- If **Philips AD7050W** is not in the list, try to scan the available Wi-Fi networks again.

## Open the built-in web page of AD7050W

- 1 Launch Apple **Safari** browser or any other Internet browser on your Wi-Fi enabled device.
- 2 Type in **192.168.1.1** at the browser address bar and confirm.
  - ↳ The AD7050W configuration web page is displayed.

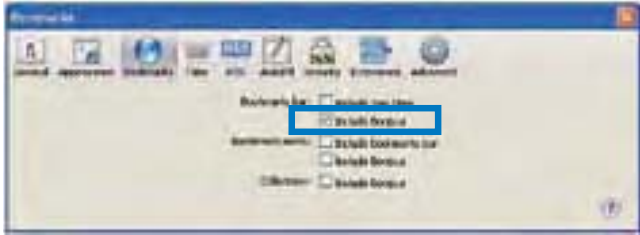


If you use Safari on your Wi-Fi enabled PC/Mac, you can also select 'Philips AD7050W XXX' from the Bonjour pull-down list to enter the AD7050W configuration web page directly.

- 1 Click **\* -> Preferences**.
  - ↳ The Bookmarks menu is displayed.

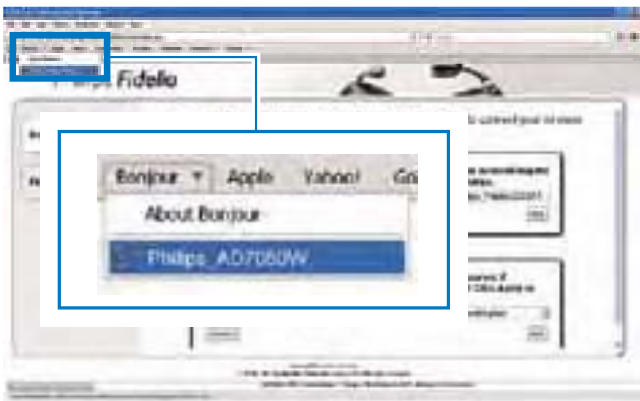


## 2 Tick Include Bonjour for Bookmarks bar.



## 3 Select 'Philips AD7050W XXX' from the Bonjour pull-down list shown at the bookmarks bar.

↳ The AD7050W configuration web page is displayed.



## Change the internal Wi-Fi settings of AD7050W

On the AD7050W configuration web page, you can change the internal Wi-Fi settings of AD7050W for connection of AD7050W to your existing home Wi-Fi network.

### Note

- Make sure that the settings on the configuration web page match your home Wi-Fi network settings that you wrote on paper.



- Follow the on-screen instructions to change and confirm the internal Wi-Fi settings of AD7050W.
  - ↳ After a while, the indicator on the back of AD7050W turns solid green, and the unit beeps.
  - ↳ AD7050W is connected to your existing home Wi-Fi network successfully.

### Note

- If the **WI-FI SETUP** indicator on AD7050W does not turn solid green, it means that the Wi-Fi connection has failed. Please power off both your Wi-Fi router and AD7050W and then power on them again to see whether AD7050W can be connected to your home Wi-Fi network. If the problem remains, try the above procedures again.
- After you finish the above changes or power-off and power-on of AD7050W, the new Wi-Fi network created by AD7050W will disappear.

## Tip

- If you like, you can change the name of your AD7050W in **Advanced settings -> AirPlay Device Name** on the AD7050W configuration web page. This is helpful when you have multiple Philips AirPlay-enabled devices in your house and you need to distinguish between them.
- If you want to enter the network name (SSID) manually (for example, if you want to hide your SSID), go to **Advanced settings -> CONFIGURE MANUALLY** on the AD7050W configuration web page.

## Restore your Wi-Fi enabled device back to your existing home Wi-Fi setting

### Note

- Make sure that the settings at steps 2 to 3 below match your home Wi-Fi network settings you wrote on paper.

- 1 Select **Settings -> Wi-Fi** on your iPod touch/iPhone/iPad.
  - Or open the list of available Wi-Fi networks on your PC/Mac.



- 2 Select your network name (SSID) from the list of available wireless networks.



- 3 Enter the network key if required.
- 4 Wait until successful Wi-Fi connection to your home Wi-Fi network.

# 5 Play

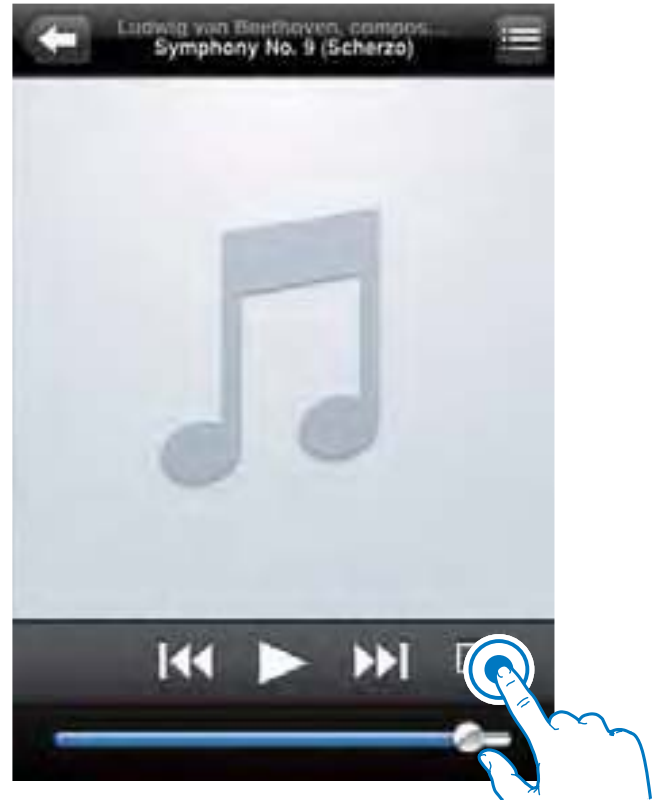
## Stream audio from your iTunes music library to AD7050W

### Note

- Make sure that your iTunes host device is connected to the same Wi-Fi network as AD7050W. Your iTunes device can be an iPod touch/iPhone/iPad installed with iOS 4.3 (or later) or a Wi-Fi enabled PC/Mac installed with iTunes 10 (or later).
- For iPhone 4S users: To ensure optimal performance of AirPlay streaming, upgrade your iPhone 4S to iOS 5.1 or later.

## Stream from your iPod touch/iPhone/iPad

- 1 Launch the **iPod/Music** application on your iPod touch/iPhone/iPad.
- 2 Tap on the AirPlay icon.



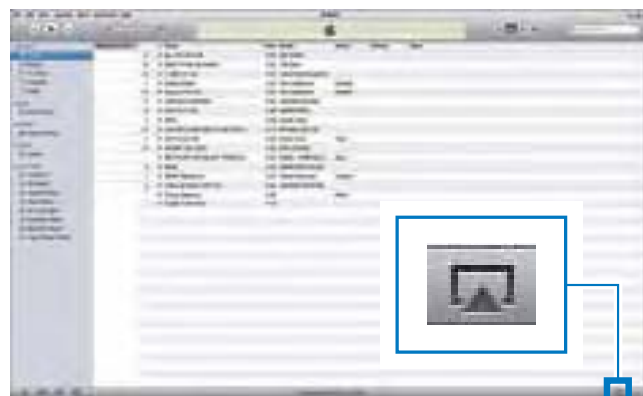
- 3 Select **Philips AD7050W XXXX** (or user customized name) from the AirPlay list.



**Philips AD7050W xxx**

**Cancel**

- 4 Select a media file and start play.  
 ↳ After a while, you will hear music from AD7050W.



- 3 Select **Philips AD7050W XXXX** (or user customized name) from the AirPlay list.



- 4 Select a media file and start play.  
 ↳ After a while, you will hear music from AD7050W.



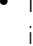

### Note

- If you fail to hear music after successful setup, do one of the following on your iPod touch/iPhone/iPad:
- (1) Disconnect and then re-connect to the same Wi-Fi router again;
- (2) Close all applications running at the background;
- (3) Power off and then power on your iPod touch/iPhone/iPad again.

## Stream from your PC/Mac

- 1 Launch iTunes 10 (or a later version) on your PC/Mac.
- 2 Click the AirPlay icon on the window.

### Tip

- When you stream audio from your iTunes music library on a PC/Mac, you can select more than one AirPlay-enabled devices (if available) at step 3 to stream music to all of them at the same time.
- If you are using an earlier version of iTunes, the AirPlay icon may be  instead of .

## Control play

You can select different play options from either your iTunes host device or AD7050W.

### Note

- Make sure that you have successfully streamed audio from your iTunes music library to AD7050W.

- To pause or resume play, press ►||.
- To adjust volume, press +/- repeatedly.

### Tip

- If you are streaming music from a PC/Mac, to control music play from AD7050W, launch iTunes and tick **Allow iTunes audio control from remote speakers** in **Edit** (for Windows) or **iTunes** (for Mac) -> **Preferences...** -> **Devices**.

## Use advanced sound settings

If your iTunes host device is an iPod touch/iPhone/iPad:

For advanced sound settings and additional features, you can use your iPod touch/iPhone/iPad to download the **Philips SoundStudio** application from Apple App Store. It is a free application from Philips.

If your iTunes host device is a Wi-Fi enabled PC/Mac:

For advanced sound settings, you can use the equalizer available on iTunes directly (**View -> Show Equalizer**).

### Tip

- See the iTunes help documentation for more details.

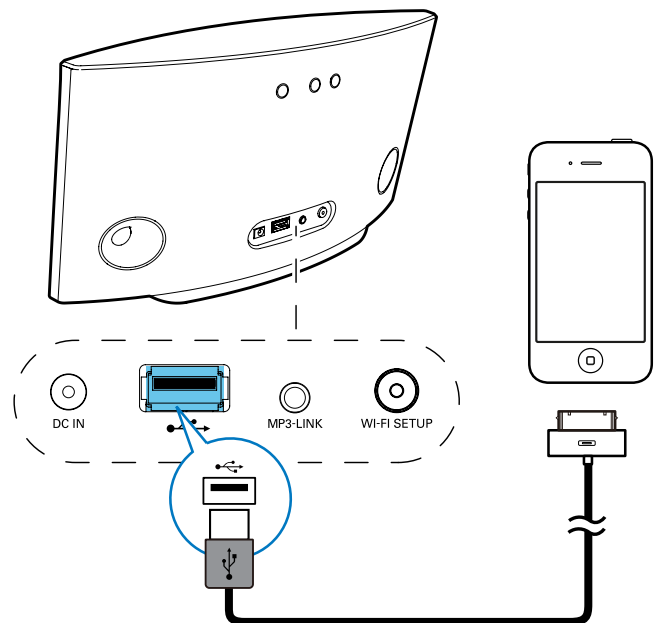
## Play/charge your iPod/iPhone/iPad through USB socket

### Note

- The USB socket is only compatible with iPod/iPhone/iPad.

You can play or charge your iPod/iPhone/iPad through the USB socket with an Apple USB cable (not supplied).

If you have stopped audio streaming by AirPlay, after successful USB connection, the unit switches to the USB source automatically.



- Connect an Apple USB cable (not supplied) to:
  - the **USB** socket on the back of AD7050W.
  - the dock connector on your iPod/iPhone/iPad.

## Compatible iPod/iPhone/iPad

The USB socket supports play and charge of the following iPod, iPhone, and iPad models.

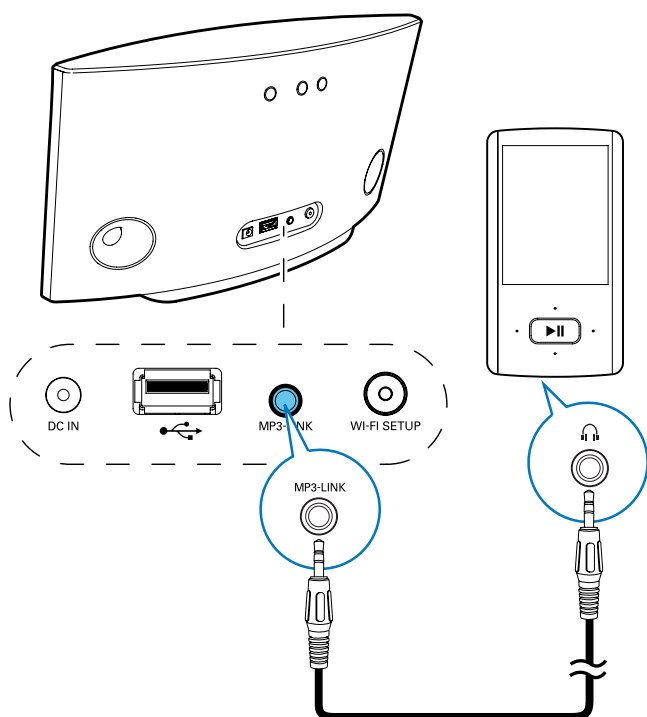
- iPad 2
- iPad
- iPhone 4S
- iPhone 4
- iPhone 3GS
- iPhone 3G
- iPhone
- iPod classic
- iPod 5G
- iPod 4G
- iPod nano (2nd, 3rd, 4th, 5th, and 6th generation)
- iPod touch (1st, 2nd, 3rd, and 4th generation)

- Connect the supplied MP3 link cable to:
  - the **DC IN** socket on the back of the unit.
  - the headphone socket on an external audio player.

## Play from an external device

You can also listen to an external audio player through the unit.

If you have stopped both audio streaming by AirPlay and play through the USB socket, the unit switches to the MP3 link source automatically.

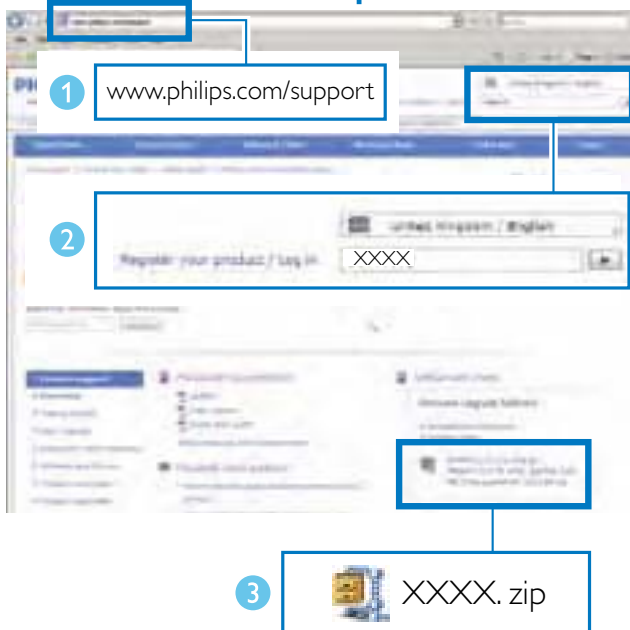


# 6 Update firmware

## Note

- You can only update the firmware from a PC/Mac.

## Download the update file



- 1 On your PC/Mac, go to [www.philips.com/support](http://www.philips.com/support).
- 2 Enter the model number to find the latest firmware upgrade file available.
- 3 Save the upgrade file to your hard drive.

## Update from the configuration page

### Warning

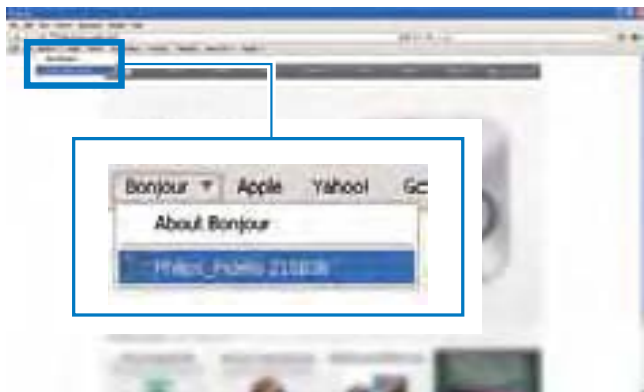
- Always connect your AD7050W to AC power for firmware upgrade. Never power off your AD7050W during firmware upgrade.

## Note

- To use an Internet browser other than Apple Safari on your PC/Mac, remember to go to the Wi-Fi router configuration page and write down the IP address of your AD7050W. See the user manual of your Wi-Fi router for how to find the IP addresses of devices connected to the Wi-Fi router:

- 1 Power on AD7050W (see 'Turn AD7050W on' on page 9).
  - ↳ It takes about 35 seconds for the unit to boot up. During boot-up, the **WI-FI SETUP** indicator on the back of the unit blinks yellow.
  - ↳ After boot-up, you can hear a beep and the **WI-FI SETUP** indicator turns to solid white.
  - ↳ AD7050W is connected to the last configured Wi-Fi network automatically.
- 2 Make sure that AD7050W and your PC/Mac are connected to the same Wi-Fi router.
- 3 Open Apple **Safari** on your PC/Mac, then select 'Philips\_Fidelio XXX' from the Bonjour pull-down list.
  - Or open any other Internet browser on your PC/Mac, then type in the IP address of AD7050W (available on the Wi-Fi router configuration page) at the address bar.
    - ↳ The AD7050W configuration web page is displayed.





- 4 Follow the on-screen instructions to complete the firmware update.

#### Note

- In case the firmware update fails, you can try the above procedures again.
- After successful firmware update, if there is any problem with the Wi-Fi connection, restart AD7050W, and then try to set up the Wi-Fi network for AD7050W again (see 'Connect to your home Wi-Fi network for AirPlay' on page 10).

# 7 Product information



## Note

- Product information is subject to change without prior notice.

## Specifications

### Amplifier

Rated Output Power	2 X 20 W RMS
Frequency Response	50 Hz - 20 kHz, $\pm 3$ dB
Signal to Noise Ratio	> 86 dB
MP3 Link	600 mV RMS 20 kohm

### Speakers

Speaker Impedance	8 ohm
Speaker Driver	66 mm full range
Sensitivity	82 dB/m/W

### Wireless

Wireless standard	802.11b/g
Wireless security	WEP (64 or 128 bit), WPA/WPA2 (8-63 characters)
Frequency range	2412 - 2462 MHz (CH1-CH11) (for /79, /37, /55, /97)  2412 - 2472 MHz (CH1-CH13) (for /12, /10, /05)
PBC (one button push)	Yes

## General information

AC power	Input: 100 ~ 240V, 50/60 Hz 2A
PHILIPS	
SWITCHING POWER SUPPLY MODEL: EFS05001800250 CE	Output: 18V $\approx$ 2.5 A
Operation Power Consumption	40 W
Power Consumption in Standby Mode	< 0.5 W
Dimensions	
- Main Unit (L x W x H)	358 x 137 x 203 mm
Weight	
- With Packing	3.05 kg
- Main Unit	2.1 kg

# 8 Troubleshooting



## Warning

- Never remove the casing of this apparatus.

To keep the warranty valid, never try to repair the system yourself.

If you encounter problems when using this apparatus, check the following points before requesting service. If the problem remains unsolved, go to the Philips web site ([www.philips.com/welcome](http://www.philips.com/welcome)). When you contact Philips, ensure that the apparatus is nearby and the model number and serial number are available.

### No power

- Make sure that the AC power plug of the device is connected properly.
- Make sure that there is power at the AC outlet.

### No sound

- Adjust the volume.
- Check the Wi-Fi network connection. Set up the network again if needed (see 'Connect to your home Wi-Fi network for AirPlay' on page 10).

### No response from the unit

- Restart AD7050W, and then set up the Wi-Fi network for AD7050W again (see 'Connect to your home Wi-Fi network for AirPlay' on page 10).
- Disconnect and reconnect the AC power plug, and then switch on the device again.

### Wi-Fi network connection failed

- Check if your Wi-Fi router is Wi-Fi 802.11b/g certified. This device is only compatible with Wi-Fi 802.11b/g certified routers.
- If your Wi-Fi router is Wi-Fi 802.11n certified, make sure to enable the 802.11b/g mode. AD7050W does not support connection to routers with 802.11n only.
- This device does not support the WPS-PIN method.
- If your Wi-Fi router supports WPS and the WPS-PBC method but fails to connect to AD7050W, try the manual Wi-Fi setup method (see 'Method 3: Connect to a non-WPS Wi-Fi router' on page 12).
- Enable SSID broadcast on the Wi-Fi router.
- Keep away from potential sources of interference which may affect Wi-Fi signal, such as microwave ovens.
- If you fail to use your PC for Wi-Fi network setup, check whether your PC is using a Wi-Fi network. You cannot use Ethernet connection for AirPlay network setup.
- Make sure that the SSID name of your home router consists of alphanumeric characters, with no space or special characters like %/#/\* inserted.
- If you choose to rename the AirPlay device '**Philips AD7050W XXXX**' in the setting menu, do not use special characters or symbols.
- For some new types of Wi-Fi routers, a network name (SSID) may be created automatically when you use WPS for connection. Always change the default network name (SSID) to a simple one that consists of alphanumeric characters, and also change the Wi-Fi security mode to secure your network.

## Occasional breaking of AirPlay music streaming

Do one or all of the following:

- Move AD7050W closer to your Wi-Fi router.
- Remove any obstacles between AD7050W and your Wi-Fi router.
- Avoid using Wi-Fi channel which is overlapped by the nearby Wi-Fi network.
- Check if your network speed is fast enough (in cases where multiple devices share the same router, the AirPlay performance may be affected). Turn off the other devices connected to your home router.
- Enable the Quality of Service (QoS) option (if available on the Wi-Fi router).
- Turn off other Wi-Fi routers.

## No AirPlay icon on my iTunes host device

- Make sure that AD7050W is already connected to your home Wi-Fi network.
- Before you open iTunes, make sure that you have enabled Bonjour service in your PC. Take Windows XP for example: to enable the service, you can click **Start->Control Panel**, and double-click **Administrative Tools-> Services->Bonjour Service**, then click **Start** followed by **OK** on the pop-up menu.
- If the problem remains, try to restart AD7050W.

## AirPlay connection failed with Mac or PC

- Temporarily disable the firewall and security software to see whether it blocks the ports that AirPlay uses to stream content. See the help documentation of your firewall and security software on how to unblock the ports used by AirPlay.
- When you use iPod Touch/iPhone/iPad/Mac/PC for AirPlay, if the music play breaks or stops, try to restart your iPod Touch/iPhone/iPad, iTunes or AD7050W.

- Video streaming or FTP downloads may overload your router and therefore may cause interruptions during AirPlay music play. Try to reduce the load of your router.





Specifications are subject to change without notice  
© 2012 Koninklijke Philips Electronics N.V.  
All rights reserved.

AD7050W\_37\_UM\_V1.0

