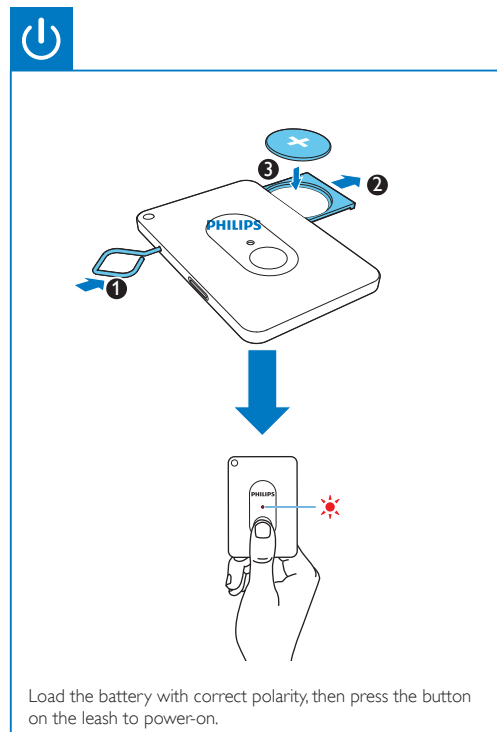
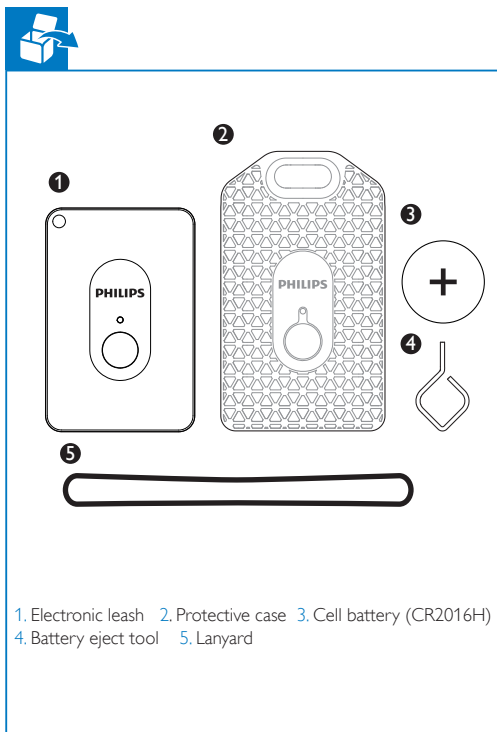
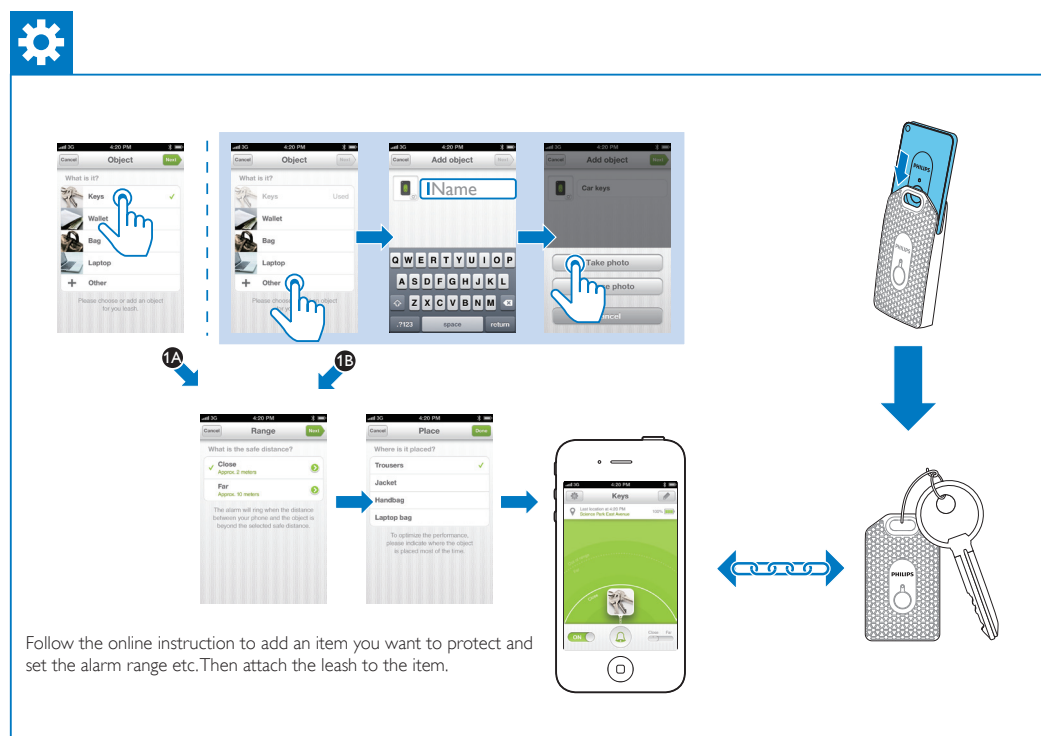
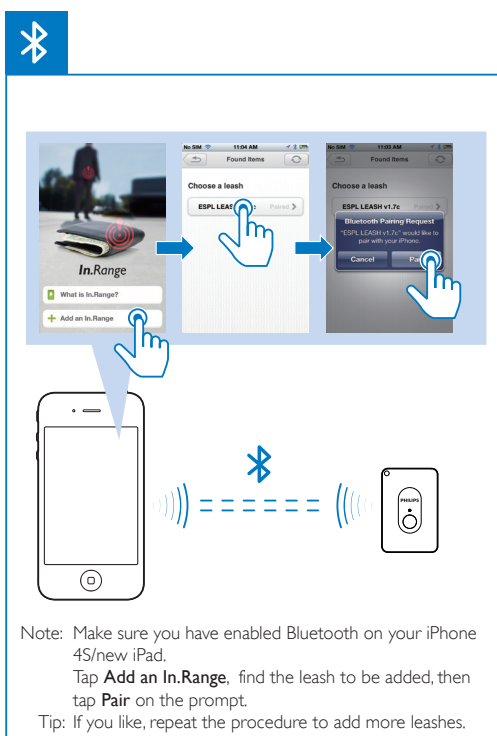


Quick start guide



All registered and unregistered trademarks are property of their respective owners.
© 2012 Koninklijke Philips Electronics N.V.
All rights reserved.

LEASH20_QSG_V0.1



1 Important

Important safety information

The translation of this document is for reference only.

In the event of any inconsistency between the English version and the translated version, the English version shall prevail.

- ① Read these instructions.
- ② Keep these instructions.
- ③ Heed all warnings.
- ④ Follow all instructions.
- ⑤ Clean only with dry cloth.
- ⑥ Only use attachments/accessories specified by the manufacturer.
- ⑦ Refer all servicing to qualified service personnel. Servicing is required when the device has been damaged in any way, such as objects have fallen into the device or the device does not operate normally.
- ⑧ Do not place any sources of danger on the device (e.g. lighted candles).
- ⑨ Do not expose the device to excessive heat caused by heating equipment or direct sunlight.
- ⑩ Do not drop the device or allow objects to fall on the device.
- ⑪ Do not allow the device to be submerged in water. Do not expose the battery compartment to water, as water entering the device may cause major damage.
- ⑫ Active mobile phones in the vicinity may cause interference.

- ⑬ Do not use any cleaning agents containing alcohol, ammonia, benzene, or abrasives as these may harm the device.
- ⑭ The small parts of this device can potentially be swallowed by babies or small children. Keep these parts out of reach of children.
- ⑮ The device shall not be exposed to dripping or splashing.
- ⑯ **Battery usage CAUTION**
 - Use only the provided battery or type of battery. Using other types of battery may damage the device and invalidate your warranty.
 - If the device is not to be used in a long period of time, remove the battery from the device.
 - Risk of explosion if the battery is replaced with an incorrect type. Follow local rules to dispose of used batteries.

Risk of swallowing batteries!

- The device may contain a coin/button type battery, which can potentially be swallowed. Keep the battery out of reach of children at all times! If swallowed, the battery can cause serious injury or death. Severe internal burns can occur within two hours of ingestion.
- If you suspect that a battery has been swallowed or placed inside any part of the body, seek immediate medical attention.
- When you change the batteries, always keep all new and used batteries out of reach of children. Make sure that the battery compartment is completely secure after you replace the battery.
- If the battery compartment cannot be completely secured, discontinue use of the product. Keep out of reach of children and contact the manufacturer.

About operating and storage temperatures

- Operate in a place where temperature is always between 0 and 35°C (32 to 95°F)
- Store in a place where temperature is always between -20 and 45°C (-4 to 113°F).
- Battery life may be shortened in low temperature conditions.

About replacement of parts/accessories

Visit www.philips.com/support to order replacement parts/accessories.

Any changes or modifications made to this device that are not expressly approved by Philips Consumer Lifestyle may void the user's authority to operate the equipment.

Notice

Notice of compliance

The device complies with Part 15 of the FCC Rules, and and Industry Canada licence-exempt RSS standard(s). Operation is subject to the following two conditions:

- 1) This device may not cause harmful interference, and
- 2) This device must accept any interference received, including interference that may cause undesired operation.

FCC rules

This equipment has been tested and found to comply with the limits for a Class B digital device, pursuant to part 15 of the FCC Rules. These limits are designed to provide reasonable protection against harmful interference in a residential installation. This equipment generates, uses and can radiate radio frequency energy and, if not installed and used in accordance with the instruction manual, may cause harmful interference to radio communications.

However, there is no guarantee that interference will not occur in a particular installation. If this equipment does cause harmful interference to radio or television reception, which can be determined by turning the equipment off and on, the user is encouraged to try to correct the interference by one or more of the following measures:

- Relocate the receiving antenna.
- Increase the separation between equipment and receiver.
- Connect the equipment into an outlet on a circuit different from that to which the receiver is connected.
- Consult the dealer or an experienced radio/TV technician for help.

Radiation Exposure Statement

This equipment complies with FCC radiation exposure limits set forth for an uncontrolled environment. This equipment should be installed and operated with a minimum distance of 20cm between the radiator and your body. This transmitter must not be co-located or operated in conjunction with any other antenna or transmitter.

This equipment also complies with Industry Canada RSS-102 with respect to Canada's Health Code 6 for Exposure of Humans to RF Fields.

IEEE 802.11b, 802.11g or 802.11n operation of this product in the U.S.A. is firmware-limited to channels 1 through 11.

Warning: 1) Any changes or modifications not expressly approved by the manufacturer could void the user's authority to operate the equipment. 2) The manufacturer is not responsible for any radio or TV interference caused by unauthorized modifications to this equipment. Such modifications could void the user's authority to operate the equipment.
Model number: PHILIPS AEA1000/00
Trade Name: Philips
Responsible Party: Philips, P.O. Box 10313
Stamford, CT 06904

Canada

This device complies with Industry Canada licence-exempt RSS standard(s): Operation

is subject to the following Two conditions: (1) this device may not cause interference, and (2) this device must accept any interference, including interference that may cause undesired operation of the device.

Le présent appareil est conforme aux CNR d'Industrie Canada applicables aux appareils radio exempts de licence. L'exploitation est autorisée aux deux conditions suivantes : (1) l'appareil ne doit pas produire de brouillage, et (2) l'utilisateur de l'appareil doit accepter tout brouillage radioélectrique subi, même si le brouillage est susceptible d'en compromettre le fonctionnement.

Radio interference

This Class B digital apparatus complies with Canadian ICES-003.

Cet appareil numérique de la classe B est conforme à la norme NMB-003 du Canada.

Disposal of your old product and battery

Your product is designed and manufactured with high quality materials and components, which can be recycled and reused.

Never dispose of your product with other household waste. Please inform yourself about the local rules on the separate collection of electrical and electronic products and batteries. The correct disposal of these products helps prevent potentially negative consequences on the environment and human health.

Your product contains batteries, which cannot be disposed of with normal household waste. Please inform yourself about the local rules on separate collection of batteries. The correct disposal of batteries helps prevent potentially negative consequences on the environment and human health.

Please visit www.recycle.philips.com for additional information on a recycling center in your area.