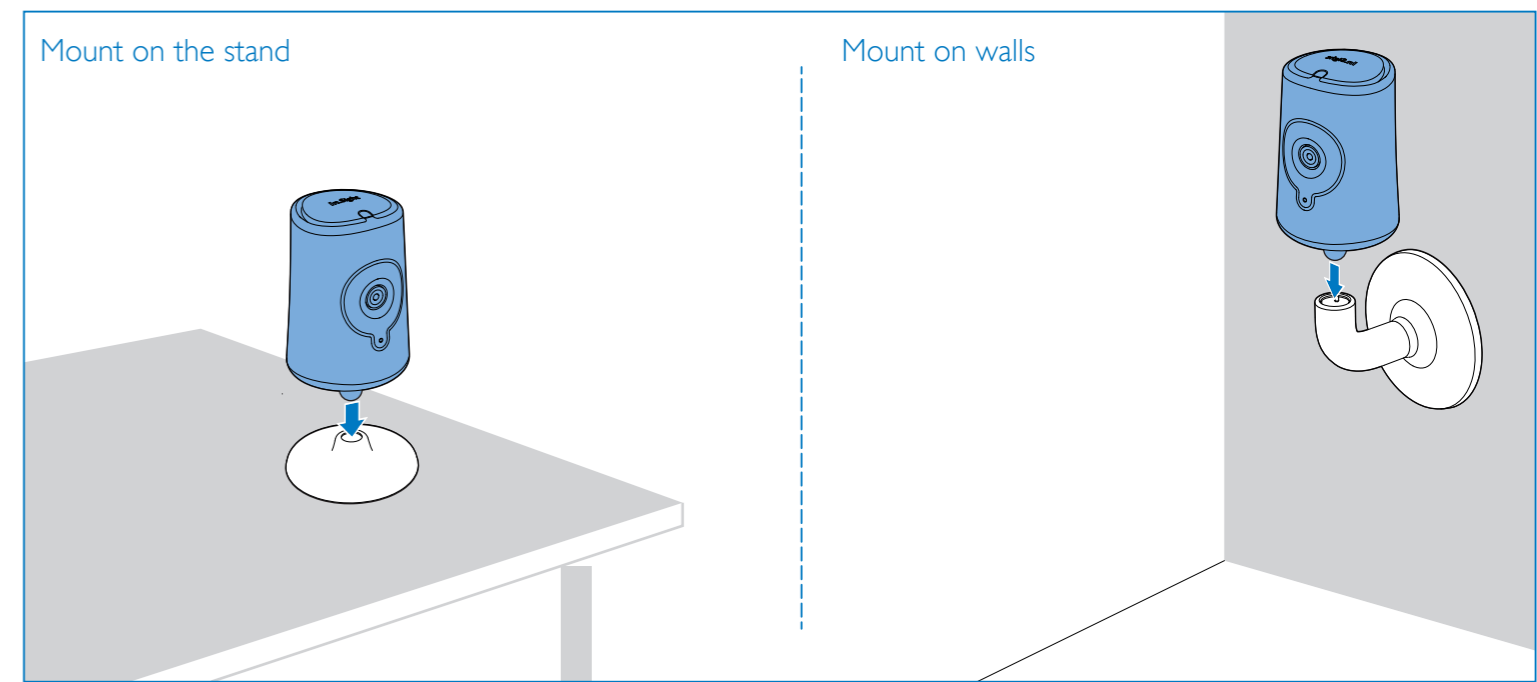
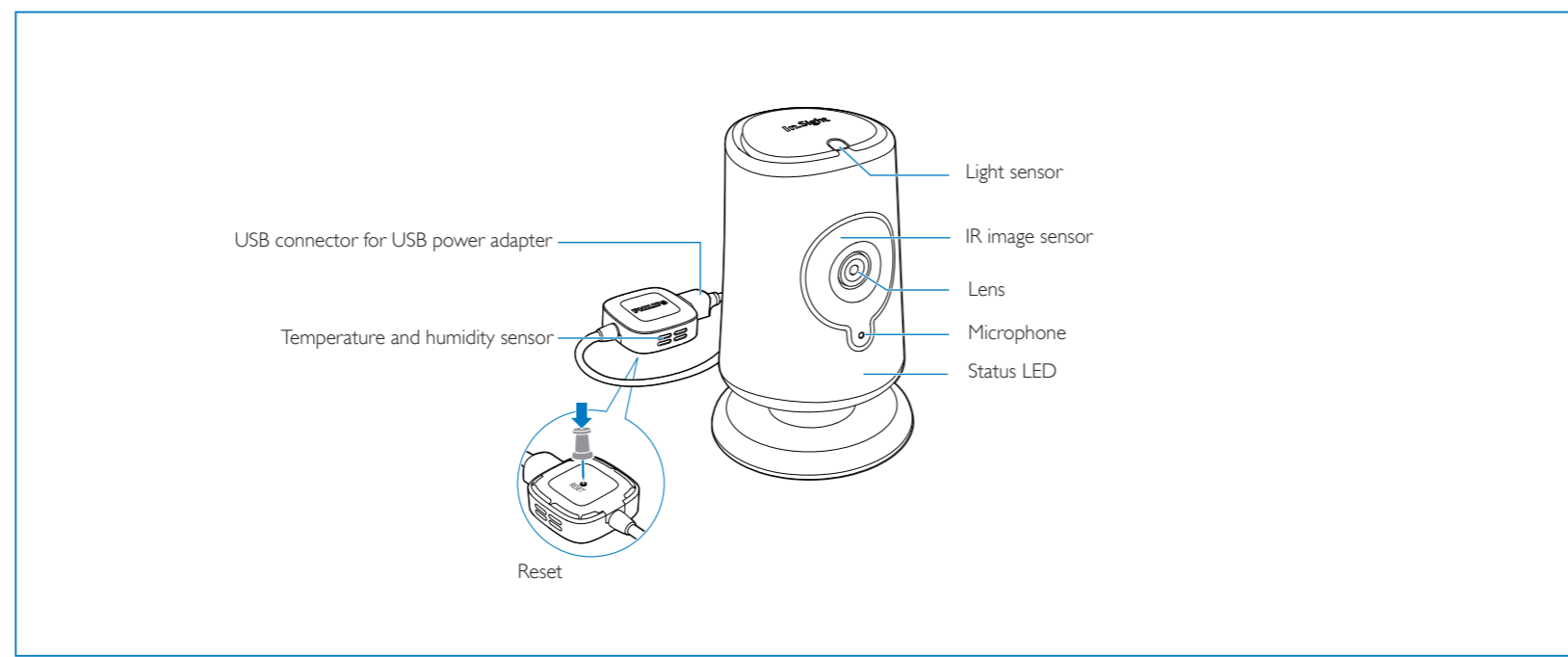




User Manual

PHILIPS



First-time setup

1. On your iPhone or Android phone, download the **Philips In.Sight** application from AppStore or Google play. **2.** Create and log in to your account.

Connect the B120 monitor to the same Wi-Fi network as your phone by following the onscreen instructions.

As instructed on the screen, put the QR code image in front of the lens of the monitor. Follow the onscreen instructions to complete the setup. The green light is always on when the connection is complete.

Connect the B120 monitor to power. Wait until the amber light flashes.

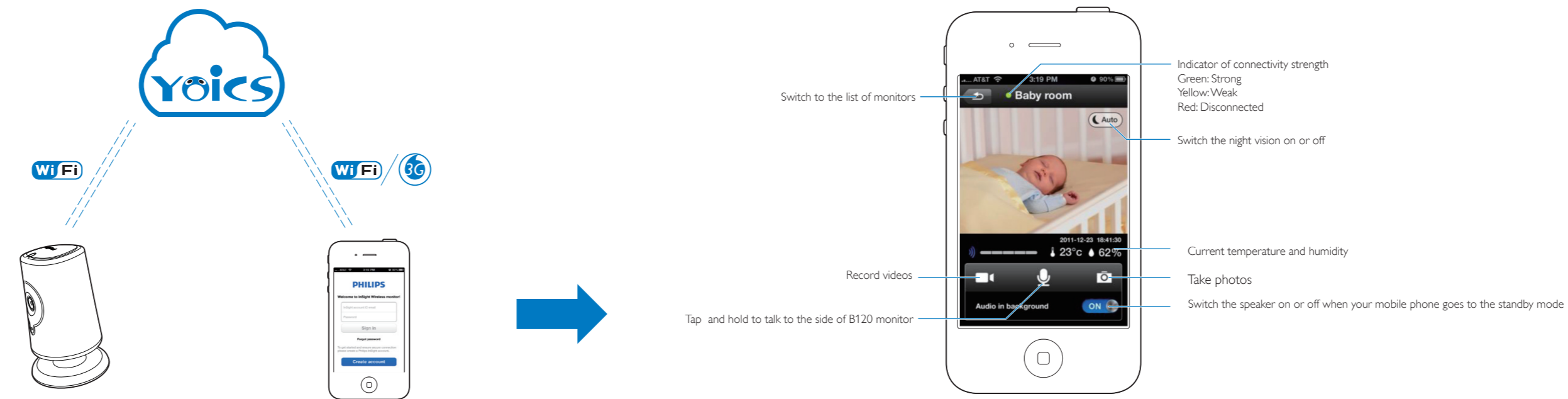
Warning - Strangulation Hazard - Children have STRANGLED in cords. Keep this cord out of the reach of children (more than 3 ft.(0.9 m) away). Do not remove this tag.

Add more monitors

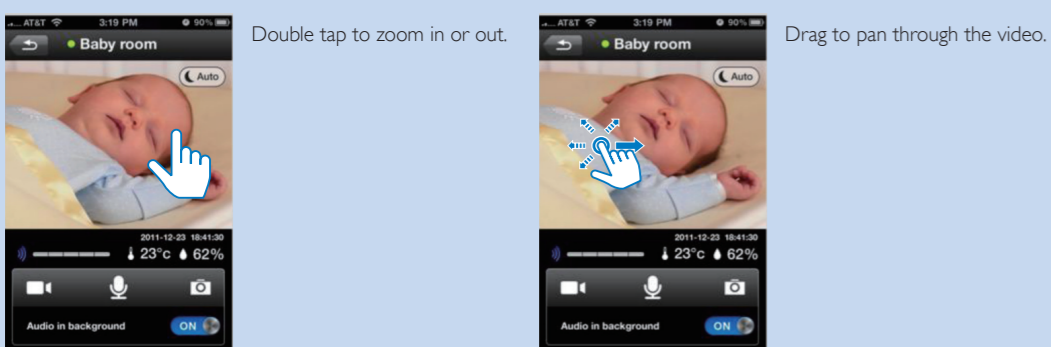
Go to the list of monitors. Tap **Add**. Follow the onscreen instructions to complete the first-time setup.

Stream Live video/ audio

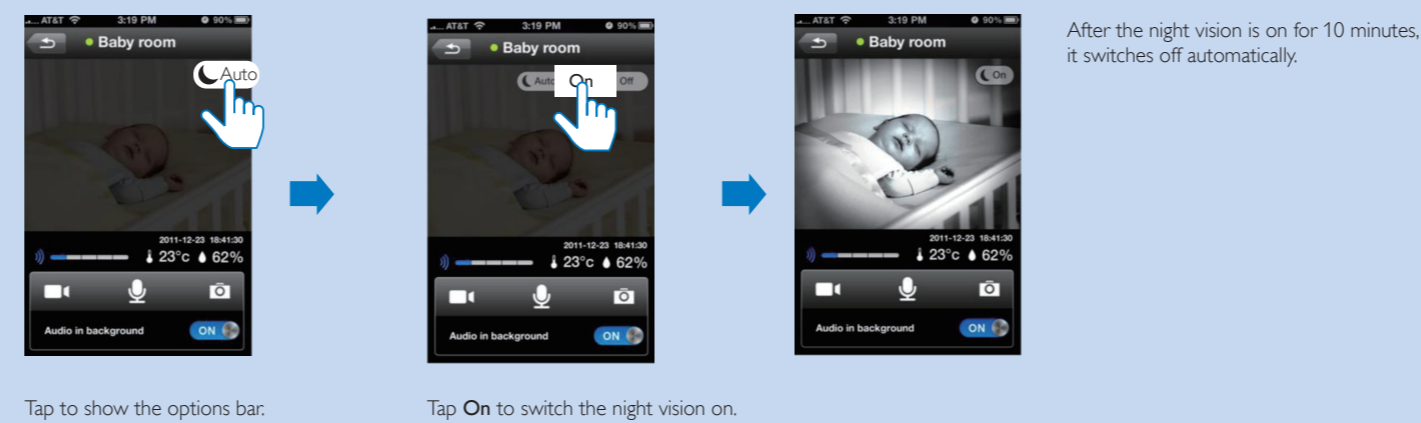
Through Wi-Fi or 3G mobile network, connect your mobile phones to the B120 monitors over the **Yoics** service. You can stream live video and audio remotely and locally from the B120 monitors to your mobile phone.



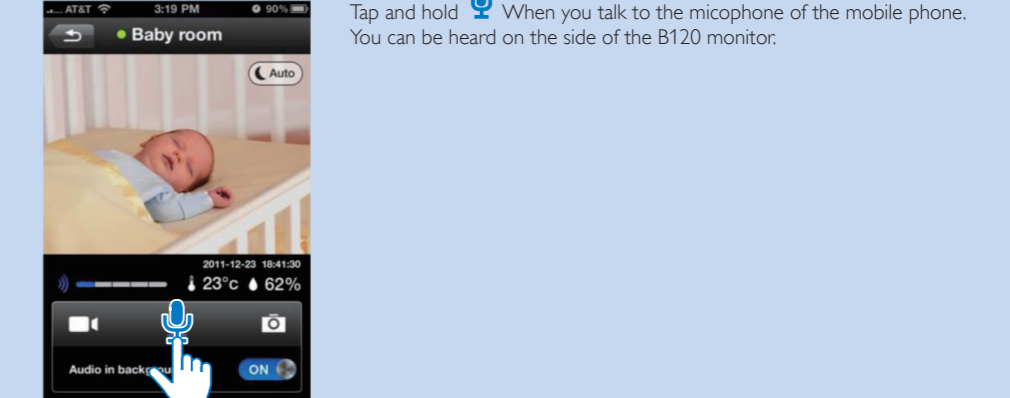
Watch the video



Night vision



Talk back



Set alerts

Go to the list of monitors.

Go to the settings of monitors.

To enable an alert, tap the icon to light it up. Tap > to set the alert.

To set the area that you want to monitor, hold the corner and drag inwards/outwards.

To select the area that you want to monitor, drag the video to pan through it.

Set up the cloud storage

Set up your YouTube account. Each time the alerts go off, the video/audio recordings are uploaded and saved to the cloud storage under your account.

Check alerts

Alerts with video/ audio recordings (A maximum of 25 alerts can be recorded.)

Live video/audio

For unread alerts, ► is displayed on the video thumbnail. Tap ► to play the video from YouTube.

Tap **Clear alerts** to clear all alerts.

Setup the monitor

To go to the settings of a monitor, tap > next to the monitor. You can select your options for the monitor. If you mount the monitor on the ceiling, switch on **Image flip**. To delete current monitor, tap the **Delete monitor** button.

Share the monitor

To enable the function, tap to light it up. In **Sharing list**, add the email of your friend.

Update the software

You are notified of software updates when they are available. Click the ">". Follow the onscreen instructions to update the software.

Specifications Especificaciones Características técnicas

General information

AC power adapter
 Philips ASUC30z-050060 (z = a, b, c, and e)
 a direct plug-in power adapter with USB output terminal and a different country plug type ('a'=America, 'b'=Britain, 'c'=Australia, 'e'=Europe)
 Input: 100-240V~ 50/60 Hz, 600 mA
 Output: 5V DC===1.5 A

Connectivity
 Wi-Fi 802.11n

Apps
 Platform: iOS, Android

Lens

Focus mode: Fixed
 Focus range: 0.7 to 5 meters
 Aperture: F2.8
 Digital zoom: 2 x
 Night mode: IR LED, 4 meters

Sensors

Ambient light sensor
 IR LED
 IR range: 4 meters
Temperature & humidity sensor
 Range: -10 °C to 50 °C, 20% to 90%

Video

Resolution
 Streaming through Wi-Fi: 720p (High definition)
 Streaming through 3G mobile network: VGA

Video format
 H.264

Audio

Input
 High-sensitive mono microphone

Output
 Amplifier: 0.5 W
 Speaker: 8 ohm, 0.6 W

Audio format
 XDFASF5DAF