

Always there to help you

Register your product and get support at
www.philips.com/welcome



User manual

PHILIPS

Contents

1 Important	2	Amplifier	12
Know these safety symbols	2	Speakers	12
Important safety instructions	2		
2 Your product	4		
Introduction	4		
What's in the box	4		
3 Get started	5		
Connect power	5		
Turn on	5		
Select a source	5		
Set time	5		
4 Use Bluetooth devices	6		
Connect a Bluetooth device	6		
Disconnect a device	7		
Reconnect a device	7		
Clear pairing history	7		
5 Charge through USB socket	8		
6 Listen to FM radio	9		
Tune to FM radio stations	9		
Store FM radio stations automatically	9		
Store FM radio stations manually	9		
Select a preset radio station	9		
7 Play through audio cable	10		
8 Other features	11		
Set alarm timer	11		
Set sleep timer	11		
Adjust display brightness	11		
9 Product information	12		
General information	12		
Bluetooth	12		
Tuner (FM)	12		
10 Troubleshooting	13		
General	13		
About Bluetooth device	13		
11 Notice	14		
Compliance	14		
Disposal of your old product and batteries	14		
Trademark notice	15		
Copyright	15		

1 Important

Know these safety symbols



This 'bolt of lightning' indicates uninsulated material within your unit may cause an electric shock. For the safety of everyone in your household, please do not remove product covering.

The 'exclamation mark' calls attention to features for which you should read the enclosed literature closely to prevent operating and maintenance problems.

WARNING: To reduce the risk of fire or electric shock, this apparatus should not be exposed to rain or moisture and objects filled with liquids, such as vases, should not be placed on this apparatus.

CAUTION: To prevent electric shock, fully insert the plug. (For regions with polarized plugs: To prevent electric shock, match wide blade to wide slot.)

Important safety instructions

- 1 Read these instructions.
- 2 Keep these instructions.
- 3 Heed all warnings.
- 4 Follow all instructions.
- 5 Do not use this apparatus near water.
- 6 Clean only with dry cloth.

- 7 Do not block any ventilation openings. Install in accordance with the manufacturer's instructions.
- 8 Do not install near any heat sources such as radiators, heat registers, stoves, or other apparatus (including amplifiers) that produce heat.
- 9 Protect the power cord from being walked on or pinched, particularly at plugs, convenience receptacles, and the point where they exit from the apparatus.
- 10 Only use attachments/accessories specified by the manufacturer.
- 11 Unplug this apparatus during lightning storms or when unused for long periods of time.
- 12 Refer all servicing to qualified service personnel. Servicing is required when the apparatus has been damaged in any way, such as power-supply cord or plug is damaged, liquid has been spilled or objects have fallen into the apparatus, the apparatus has been exposed to rain or moisture, does not operate normally, or has been dropped.
- 13 Apparatus shall not be exposed to dripping or splashing.
- 14 Do not place any sources of danger on the apparatus (e.g. liquid filled objects, lighted candles).
- 15 This product may contain lead and mercury. Disposal of these materials may be regulated due to environmental considerations. For disposal or recycling information, please contact your local authorities or the Electronic Industries Alliance: www.eiae.org.
- 16 Where the plug of the Direct Plug-in Adapter is used as the disconnect device, the disconnect device shall remain readily operable.

Warning

- Never remove the casing of this apparatus.
- Never lubricate any part of this apparatus.
- Never place this apparatus on other electrical equipment.
- Keep this apparatus away from direct sunlight, naked flames or heat.
- Make sure that you always have easy access to the power cord, plug, or adaptor to disconnect the apparatus from the power.

Note

- The type plate is located on the bottom of the product.

2 Your product

Congratulations on your purchase, and welcome to Philips! To fully benefit from the support that Philips offers, register your product at www.philips.com/welcome.

Introduction

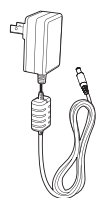
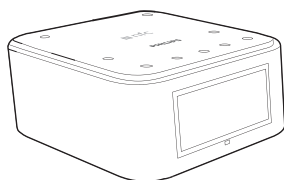
With this product, you can

- enjoy audio from your Bluetooth devices or other external audio devices,
- listen to FM radio, and
- wake up to buzzer alarm or radio.

What's in the box

Check and identify the contents of your package:

- Main unit
- Power adaptor
- Audio input cable (3.5 mm connectors)
- Short user manual



3 Get started

Always follow the instructions in this chapter in sequence.

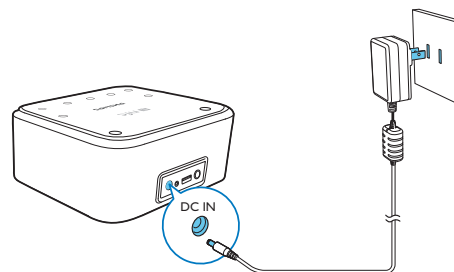
Connect power

! Caution

- Risk of product damage! Make sure that the power supply voltage matches the voltage printed on the bottom of this product.
- Risk of electric shock! When you unplug the AC power adaptor, always pull the plug from the socket. Never pull the cord.

Connect the AC power adaptor between

- the **DC IN** socket at the back of this product, and
- the power supply.



Turn on

Press **POWER**.

- ↳ The product switches to the last selected source.

Switch to standby mode

Press **POWER** again to switch the product to standby mode.

- ↳ The clock (if set) is displayed.

Select a source

Press **SOURCE/SET** repeatedly to select a source: FM preset, FM, Bluetooth, or AUX in.

Set time

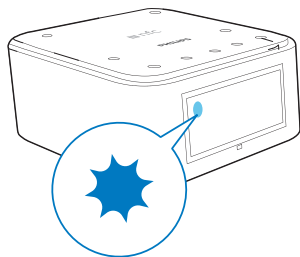
- 1 Press and hold **SOURCE/SET** for two seconds.
↳ [24H] or [12H] begins to blink.
- 2 Press **- TUNE/TIME** or **TUNE/TIME+** to select [24H] or [12H] for 12 or 24 hour format.
- 3 Press **SOURCE/SET** to confirm.
↳ The hour and minute digits begin to blink.
- 4 Press **- TUNE/TIME** or **TUNE/TIME+** repeatedly to set the hour.
- 5 Press **SOURCE/SET** to confirm.
↳ Minute digits begin to blink.
- 6 Press **- TUNE/TIME** or **TUNE/TIME+** repeatedly to set the minute.
- 7 Press **SOURCE/SET** to confirm.
↳ The set time is displayed.

4 Use Bluetooth devices

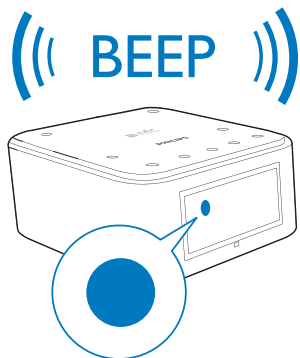
With this product, you can enjoy audio from a connected Bluetooth device.

Note

- Philips does not guarantee the compatibility with all Bluetooth devices.
- Before pairing a device with this product, read its user manual for Bluetooth compatibility. Make sure that the connected Bluetooth device supports the Advanced Audio Distribution Profile (A2DP) and the Audio Video Remote Control Profile (AVRCP).
- The product can memorize a maximum of 4 paired devices.
- Make sure that Bluetooth function is enabled on your device, and your device is set as visible to all other Bluetooth devices.
- The operational range between this product and a Bluetooth device is approximately 10 meters (30 feet).
- Any obstacle between this product and a Bluetooth device can reduce the operational range.
- Keep away from any other electronic device that may cause interference.



- 3 On your Bluetooth device, enable the Bluetooth feature and search for devices.
- 4 In the device list, tap **PHILIPS SB170**.
 - ↳ If the Bluetooth connection is established, this product beeps twice and the Bluetooth indicator turns solid.



- 5 Play audio on your Bluetooth device.
 - ↳ Audio comes out from this product.

Connect easily by NFC

If your Bluetooth device supports NFC (Near Field Communication), you can connect it with this product easily.

- 1 Press **SOURCE/SET** to switch this product to Bluetooth mode.
- 2 On your device, enable NFC and Bluetooth functions.
- 3 Tap the back of your Bluetooth device on the NFC tag on this product.

- 4 On your Bluetooth device, follow the on-screen instructions to complete the pairing and connection.

Disconnect a device

On your device, disable the Bluetooth connection with this product.

Note

- Before connecting another Bluetooth device, disconnect the current device first.

Reconnect a device

- For a paired Bluetooth device on which the automatic reconnection is enabled, this product reconnects with it once it is detected.
- For a paired Bluetooth device that does not support the automatic reconnection, reconnect it with this product manually.

Clear pairing history

In Bluetooth mode, press and hold **POWER** for 5 seconds.

Connect a Bluetooth device

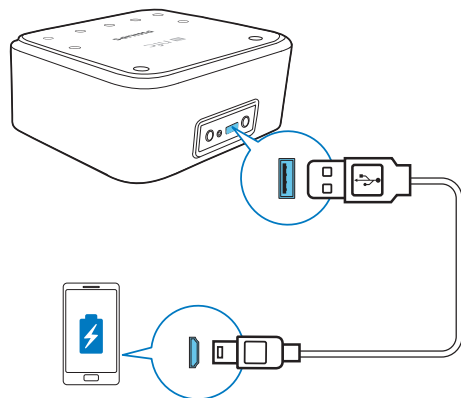
Connect a Bluetooth device to this product, and then you can stream audio to this product through Bluetooth.

Connect manually

- 1 Press **POWER** to turn on this product.
- 2 Press **SOURCE/SET** to select Bluetooth mode.
 - ↳ The Bluetooth indicator blinks on the display panel.

5 Charge through USB socket

You can connect your USB device to this product for charging.



- 1 Connect a USB cable between
 - the **USB** socket on the back of this product, and
 - the USB socket on your USB device.
- 2 Connect this product to power:
 - ↳ Once the USB device is recognized, the charging starts.

Note

- The USB socket is used for charging only.

6 Listen to FM radio

Tune to FM radio stations

Tip

- Position the antenna as far as possible from TV, VCR, or other radiation source.
- For better reception, fully extend and adjust the position of the antenna.

- 1 Press **SOURCE/SET** repeatedly to select FM preset/FM mode.
In FM preset mode:
- 2 Press and hold **- TUNE/TIME** or **TUNE/TIME +** for two seconds.
 - ↳ The product tunes to a station with strong reception automatically.
- 3 Repeat step 2 to tune to more radio stations.
In FM mode:
To tune to a radio station automatically,
 - Press and hold **- TUNE/TIME** or **TUNE/TIME +** for two seconds.
To tune to a radio station manually,
 - Press **- TUNE/TIME** or **TUNE/TIME +** repeatedly until you find optimal reception.

Store FM radio stations automatically

Note

- You can store a maximum of 20 FM radio stations.

In FM preset mode:

The first time you turn to FM preset mode, press and hold **SOURCE/SET** for two seconds.

- ↳ After available FM radio stations are stored, the first station is broadcast automatically.

To store FM radio stations automatically afterwards,

- **In FM mode**, press and hold **SOURCE/SET** for two seconds.

Store FM radio stations manually

- 1 Tune to an FM radio station.
- 2 Press and hold **SOURCE/SET** for two seconds.
 - ↳ The preset number begins to blink.
- 3 Press **- TUNE/TIME** or **TUNE/TIME +** repeatedly to select a number.
- 4 Press **SOURCE/SET** for two seconds again to confirm.
- 5 Repeat steps 1 to 4 to store other stations.

Note

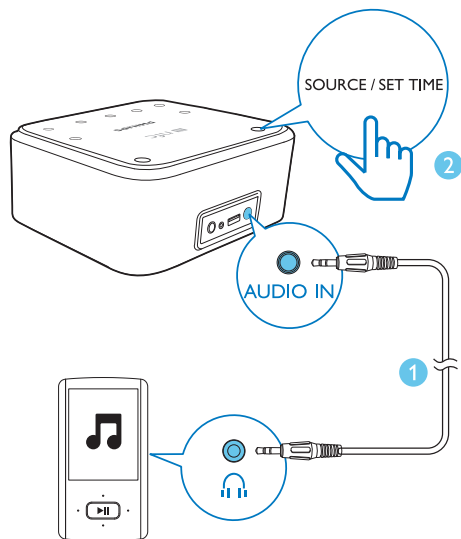
- To remove a pre-stored station, store another station in its place.

Select a preset radio station

In FM preset mode, press **- TUNE/TIME** or **TUNE/TIME +** repeatedly to select a preset number.

7 Play through audio cable

Through an MP3 link cable, you can also play audio input that is transferred from an external audio device, for example, an MP3 player.



- 1 Connect an audio input cable with a 3.5 mm connector on both ends between
 - the **AUDIO IN** socket on this product,
 - and
 - the headphone socket of an external device.
- 2 Press **SOURCE/SET** to select **AUDIO IN** mode.
- 3 Play audio on the external device (refer to its user manual).

8 Other features

↳ The alarm repeats ringing for the next day.

Snooze alarm

When alarm sounds, press **SNOOZE**.

↳ The alarm snoozes and repeats ringing nine minutes later.

Set alarm timer

Note

- Make sure that you have set the clock correctly.

- 1 Press and hold **AL1/AL2** for 2 seconds to activate alarm setting.
 - ↳ The hour digits blink.
- 2 Press **-TUNE/TIME** or **TUNE/TIME+** repeatedly to adjust hour.
 - ↳ When the sleep timer is activated, **zZ** appears.
- 3 Press **SOURCE/SET** to confirm.
 - ↳ The minute digits blink.
- 4 Repeat steps 2-3 to set the minute.
- 5 Repeat steps 2-3 to select an alarm source.
 - **TUNE**: select your last listened FM channel as alarm sound.

TUNE

- **BUZ**: select buzzer as alarm sound.

BUZ

- 6 Repeat steps 2-3 to set the alarm volume.
 - ↳ The alarm time and icon are displayed.

Activate/deactivate alarm timer

- 1 Press **AL1/AL2** to view alarm settings.
- 2 Press **AL1/AL2** again to activate or deactivate the alarm timer.
 - ↳ The alarm icon appears if alarm timer is on and disappears if it is off.
 - To stop the ringing alarm, press the corresponding **AL1/AL2**.

Set sleep timer

This product can switch to standby mode automatically after a preset period.

Press **SLEEP** repeatedly to select the sleep timer period (in minutes).

↳ When the sleep timer is activated, **zZ** appears.

To deactivate the sleep timer

Press **SLEEP** repeatedly until **[OFF]** (off) appears.

15 → 30 → 60 → 90 → 120
 ↑ OFF

Adjust display brightness

Press **BRIGHTNESS** repeatedly to select different brightness levels.

9 Product information

Note

- Product information is subject to change without prior notice.

General information

AC Power	Model: AS100-050-AA200 Input: 100 - 240 V ~, 50/60 Hz, 0.5 A Output: 5 V = 2.0 A
Operation Power Consumption	< 15 W
Standby Power Consumption	< 1 W
Max. load of USB output	5 V = 1.6 A
Dimensions - Main Unit (W x H x D)	137 x 98 x 141 mm
Weight	1.0 kg
- With Packing	0.56 kg
- Main Unit	

Bluetooth

Bluetooth specification	V3.0
Supported profiles	A2DPV1.0, AVRCP V1.0
Range	10 m (Free space)

Tuner (FM)

Tuning Range	87.5 - 108 MHz
Sensitivity - Mono, 26dB S/N Ratio	< 22 dBf
Search Selectivity	> 28 dBf
Total Harmonic Distortion	< 3%
Signal to Noise Ratio	> 50 dB

Amplifier

Rated Output Power	2 X 2.5W RMS
--------------------	--------------

Speakers

Speaker impedance	4 Ohm
Speaker driver	1.5" full range

10 Troubleshooting



Warning

- Never remove the casing of this device.

To keep the warranty valid, never try to repair the system yourself. If you encounter problems when using this device, check the following points before requesting service. If the problem remains unsolved, go to the Philips Web page (www.philips.com/support). When you contact Philips, make sure that the device is nearby and the model number and serial number are available.

General

No power

- Ensure that the AC power plug of the unit is connected properly.
- Ensure that there is power at the AC outlet.

No sound or poor sound

- Adjust the volume of this product and the connected Bluetooth device.
- Make sure that the Bluetooth connection is valid between your Bluetooth device and this product.

Clock setting erased

- Power has been interrupted or the power adapter has been disconnected.
- Reset the clock.

About Bluetooth device

The audio quality is poor after connection with a Bluetooth-enabled device.

- The Bluetooth reception is poor: Move the device closer to this product or remove any obstacle between them.

Cannot connect with the device.

- The Bluetooth function of the device is not enabled. Refer to the user manual of the device for how to enable the function.
- This product is already connected with another Bluetooth-enabled device. Disconnect that device and then try again.

The paired device connects and disconnects constantly.

- The Bluetooth reception is poor: Move the device closer to this product or remove any obstacle between them.
- For some devices, Bluetooth connection may be deactivated automatically as a power-saving feature. This does not indicate any malfunction of this product.

11 Notice

Any changes or modifications made to this device that are not expressly approved by Philips Consumer Lifestyle may void the user's authority to operate the equipment.

Compliance

Notice for the USA and Canada

This device complies with Part 15 of the FCC Rules and RSS standard of Industry Canada. Operation is subject to the following two conditions:

- 1 this device may not cause harmful interference, and
- 2 this device must accept any interference received, including interference that may cause undesired operation.

This equipment has been tested and found to comply with the limits for a Class B digital device, pursuant to part 15 of the FCC Rules and ICES-003 of Industry Canada . These limits

are designed to provide reasonable protection against harmful interference in a residential installation. This equipment generates, uses, and can radiate radio frequency energy and, if not installed and used in accordance with the instruction manual, may cause harmful interference to radio communications.

However, there is no guarantee that interference will not occur in a particular installation. If this equipment does cause harmful interference to radio or television reception, which can be determined by turning the equipment off and on, the user is encouraged to try to correct the interference by one or more of the following measures:

- Relocate the receiving antenna.
- Increase the separation between equipment and receiver.

- Connect the equipment into an outlet on a circuit different from that to which the receiver is connected.
- Consult the dealer or an experienced radio/TV technician for help.

RF Radiation Exposure Statement: This equipment complies with FCC's and IC's RF radiation exposure limits set forth for an uncontrolled environment. The antenna(s) used for this transmitter must be installed and operated to provide a separation distance of at least 20 cm from all persons and must not be collocated or operating in conjunction with any other antenna or transmitter. Installers must ensure that 20cm separation distance will be maintained between the device (excluding its handset) and users.

Le présent appareil est conforme aux CNR d'Industrie Canada applicables aux appareils radio exempts de licence. L'exploitation est autorisée aux deux conditions suivantes : (1) l'appareil ne doit pas produire de brouillage, et (2) l'utilisateur de l'appareil doit accepter tout brouillage radioélectrique subi, même si le brouillage est susceptible d'en compromettre le fonctionnement.
Cet appareil numérique de la classe B est conforme à la norme NMB-003 du Canada.

Disposal of your old product and batteries

Your product is designed and manufactured with high quality materials and components, which can be recycled and reused. Never dispose of your product with other household waste. Please inform yourself about the local rules on the separate collection of electrical and electronic products and batteries. The correct disposal of these products helps prevent potentially negative consequences on the environment and human health. Your product contains batteries, which cannot be disposed of with normal household waste.

Please inform yourself about the local rules on separate collection of batteries. The correct disposal of batteries helps prevent potentially negative consequences on the environment and human health.

Please visit www.recycle.philips.com for additional information on a recycling center in your area.

Environmental information

All unnecessary packaging has been omitted. We have tried to make the packaging easy to separate into three materials: cardboard (box), polystyrene foam (buffer) and polyethylene (bags, protective foam sheet.) Your system consists of materials which can be recycled and reused if disassembled by a specialized company. Please observe the local regulations regarding the disposal of packaging materials, exhausted batteries and old equipment.

Trademark notice

The Bluetooth® word mark and logos are registered trademarks owned by Bluetooth SIG, Inc. and any use of such marks by Philips is under license.



The N Mark is a trademark or registered trademark of NFC Forum, Inc. in the United States and in other countries.

Copyright

2013 © Koninklijke Philips Electronics N.V. Specifications are subject to change without notice. Trademarks are the property of Koninklijke Philips Electronics N.V or their respective owners. Philips reserves the right to change products at any time without being obliged to adjust earlier supplies accordingly.



Specifications are subject to change without notice
© 2013 Koninklijke Philips Electronics N.V.
All rights reserved.

Document order number: 000000000000

