

RC9800i Touch Screen Remote Control User Manual

Philips Innovative Applications

User Manual RC9800i Touch Screen Remote Control

Copyright 2004 Philips Innovative Applications, Interleuvenlaan 72, 3000 Leuven (Belgium).

Remark:

No part of this manual may be reproduced by means of printing or photocopying nor may it be translated into a different language without prior written consent of Philips Innovative Applications.

Philips Innovative Applications is not liable for possible mistakes in this manual or for damages directly or indirectly resulting from the use of the RC9800i Touch Screen Remote Control.

Concept and Realization of the Guide:

The Human Interface Group
De Regenboog 11, 2800 Mechelen (Belgium)
<http://www.higroup.com>

Important Information

Please install and connect the RC9800i Touch Screen Remote Control only in the order described in this manual. This assures best installation results without technical issues.

Please read this guide carefully before using the RC9800i and keep it for future reference.

The most recent downloads and information on this product is available through our website www.homecontrol.philips.com

Broadband Internet access (min. 256 kbps) is required if you want to use the Internet functions of the RC9800i.

Please check whether your Internet service provider charges extra additional fees for exceeding a certain limit of transferred data limit. When using Internet media services on a daily basis, you may exceed such a limit.
For example: When you listen to Internet radio (at 64 kbps) for about 36 hours, 1 GB (gigabyte) of data will be transferred to your system.

During set-up and installation, it may be helpful to have the original remote controls for your TV set, audio system and other wireless network components (if appropriate) at hand.

Software information concerning Internet Radio will be available in the course of 2005, along with a software upgrade.

Safety Precautions

Before operating the system, check that the operating voltage indicated on the nameplate (or the voltage indication beside the voltage selector) of your system is identical with the voltage of your local power supply. If it is not, please consult your dealer.

Radio equipment for wireless applications is not protected against disturbance from other radio services.

Do not expose the product to dripping or splashing.

Do not expose the product to excessive moisture, rain, sand or heat from heating equipment or direct sunlight.



Do not open the product. Contact your Philips retailer if you experience technical difficulties.

IFU Approbation / Safety Content RC9800i

FCC Compliancy

This device complies with Part 15 of the FCC Rules. Operation is subject to the following two conditions:

This device should not cause harmful interference.

This device must accept any interference received, including interference that may cause undesired operation.

This equipment has been tested and found to comply with the limits for a Class B digital device, pursuant to part 15 of the FCC rule.

These limits are designed to provide reasonable protection against harmful interference in residential installations. This equipment generates, uses, and can radiate radio frequency energy and, if not installed and used in accordance with the instructions, may cause harmful interference to radio communications.

However, there is no guarantee that interference will not occur in a particular installation. If the equipment does cause harmful interference to radio or television reception, which can be determined by turning the equipment off and on, the user is encouraged to try to correct the interference by using one or more of the following measures:

Reorient or relocate the receiving antenna.

Increase the separation between the equipment and receiver.

Connect the equipment into to an outlet on a different circuit from the receiver.

Consult the dealer or an experienced radio/TV technician for help.

CAUTION:

User changes or modifications not expressly approved by the party responsible for compliance may void the user's authority to operate the equipment.

Regulations According to R&TTE

Declaration

Hereby, Philips Remote Control Systems hereby declares that this universal remote control is in compliance with the essential requirements and other relevant provisions of Directive 1999/5/EC:

Radio: EN 300 328

EMC: ETSI EN 301 489-1, ETSI EN 301 489-17

Safety: EN60950

Finnish	Philips Consumer Electronics, Remote Control Systems vakuuttaa täten että RC9800i tyyppinen laite on direktiivin 1999/5/EY oleellisten vaatimusten ja sitä koskevien direktiivin muiden ehtojen mukainen.
Dutch	Hierbij verklaart, Philips Consumer Electronics, Remote Control Systems dat het toestel RC9800i in overeenstemming is met de essentiële eisen en de andere relevante bepalingen van richtlijn 1999/5/EG.
French	Par la présente, Philips Consumer Electronics, Remote Control Systems , déclare que l'appareil RC9800i est conforme aux exigences essentielles et aux autres dispositions pertinentes de la directive 1999/5/CE
Swedish	Härmed intygar, Philips Consumer Electronics, Remote Control Systems , att denna RC9800i står i överensstämmelse med de väsentliga egenskapskrav och övriga relevanta bestämmelser som framgår av direktiv 1999/5/EG.
Danish	Undertegnede Philips Consumer Electronics, Remote Control Systems erklærer herved, at følgende udstyr RC9800i overholder de væsentlige krav og øvrige relevante krav i direktiv 1999/5/EF
German	Hiermit erkläre Philips Consumer Electronics, Remote Control Systems die Übereinstimmung des Gerätes RC9800i mit den grundlegenden Anforderungen und den anderen relevanten Festlegungen der Richtlinie 1999/5/EG.
Greek	<i>ΜΕ ΤΗΝ ΠΑΡΟΥΣΑ</i> Philips Consumer Electronics, Remote Control Systems <i>ΔΗΛΩΝΕΙ ΟΤΙ</i> RC9800i <i>ΣΥΜΜΟΡΦΩΝΕΤΑΙ ΠΡΟΣ ΤΙΣ ΟΥΣΙΩΔΕΙΣ ΑΠΑΙΤΗΣΕΙΣ ΚΑΙ ΤΙΣ ΛΟΙΠΕΣ ΣΧΕΤΙΚΕΣ ΔΙΑΤΑΞΕΙΣ ΤΗΣ ΟΔΗΓΙΑΣ</i> 1999/5/ΕΚ

Italian	Con la presente Philips Consumer Electronics, Remote Control Systems dichiara che questo RC9800i è conforme ai requisiti essenziali ed alle altre disposizioni pertinenti stabilite dalla direttiva 1999/5/CE.
Spanish	Por medio de la presente, Philips Consumer Electronics, Remote Control Systems , declara que el RC9800i cumple con los requisitos esenciales y cualesquiera otras disposiciones aplicables o exigibles de la Directiva 1999/5/CE
Portuguese	Philips Consumer Electronics, Remote Control Systems declara que este RC9800i está conforme com os requisitos essenciais e outras disposições da Directiva 1999/5/CE.

Declaration of Conformity (DoC)

The Declaration of Conformity can be found at
<http://www.pronto.philips.com/products/DoC>

Marking

In line accordance with CE marking regulations, the CE mark, the notified body number and the class 2 identifier are added to the equipment:

CE 0682 

This device can be used in:

√ FR	√ UK	√ DE	√ DK	√ SE	√ ES	√ GR	√ PT	√ CH
√ AT	√ BE	√ FI	√ IRE	√ IT	√ LU	√ NL	√ NO	

Battery Disposal



Your device uses a rechargeable Li Polymer battery. Do not dispose the battery along with household waste. Contact your local waste disposal agency for the address of the nearest battery deposit site.

Service and Support

Support for Your Product

Philips products have been designed and manufactured to in accordance with the highest quality standards. If your Philips Connected Planet product is not working correctly, we recommend that you check your user manual to verify that your product is properly connected and configured.

The website for Connected Planet support (www.philips.com/connectedplanet/support) offers you all of the information you need to optimally enjoy your product – this includes help to get started, frequently asked questions and interactive troubleshooting. Most problems can be solved this way, especially when they are related to the use of your product.

Service Within During Your Warranty Period

If your product is defective and needs repair under warranty, you should return it to the Philips dealer where you purchased it. This is the fastest and easiest way to get your product working again under warranty.

Should you be unable to return the product to your Philips dealer, you may select an authorized service center at your Connected Planet support website (www.philips.com/connectedplanet/support) under “Find a service center.”

You may also contact our Consumer Care Center for repair advice. If so, we need the following information:

A clear description of the problem – including the circumstances under which it occurs;

The exact type number of your product;

The date of purchase.

Service Outside After Your Warranty Period

If your product is defective and needs repair, but your warranty has expired, you may consult the Philips dealer where you purchased it or contact an authorized service center – you will find addresses (see “Find a service center”) at your Connected Planet support website (www.philips.com/connectedplanet/support).

You may also contact our Consumer Care Center for repair advice. If so, we need the following information:

A clear description of the problem – including the circumstances under which it occurs;

The exact type number of your product;

The date of purchase.

Important Notice

You may decide to have your product repaired in a different country from where you purchased it. We would like to inform you that repair may be limited in those cases, and may take more time and/or include costs, e.g. due to the need to obtain different parts. The repair center will inform you as necessary.

Helpline

Europe

België/Belgique/Belgien	02 275 0701
Danmark	35 25 87 61
Deutschland	0696 698 4712
España	9 17 45 62 46
France	03 8717 0033
Greece	00800 3122 1223
Ireland	01 601 1161
Italia	02 48 27 11 53
Luxemburg/Luxembourg	26 84 3000
Nederland	053 482 9800
Norge	22 70 82 50

Österreich	01 546 575 603
Portugal	800 831 363
Schweiz/Suisse/Svizzera	02 23 10 21 16
Suomi	09 2290 1908
Sverige	08 632 0016
UK (United Kingdom)	0207 949 0069

US & Canada

1 888 PHILIPS

Website

To consult the latest User Manual and to download the firmware update, please check the RC9800i Touch Screen Remote's website:
www.homecontrol.philips.com

Contents of the Box

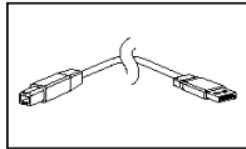
The RC9800i Touch Screen Remote Control box contains the following items:
The RC9800i



A cradle and an adapter;

@@@illustration@@@

A USB cable.



USB cable

In order to learn more about your RC9800i Touch Screen Remote Control, there are two types of documentation available to you:

The Quick Start Guide supports you in getting the device up and running quickly and easily;

The RC9800i Touch Screen Remote Control User Manual helps you to start using the RC9800i and to get the maximum out of it.

Contents

Guide Through the User Manual	12
Pick Up Your RC9800i and Take a Good Look	13
Powering On and Off	13
First-Time Power On.....	13
Everyday Use	14
The Touch Screen	14
The Hard Keys	14
Charging the RC9800i	15
The Cradle as Media Adapter.....	16
The USB Connector	16
Getting the Settings Right	17
RC9800i Settings	17
Calibrating the Touch Screen.....	17
Selecting Your Location.....	18
Network Settings.....	18
Adjusting Time, Date and Time Zone Settings	19
Home Setup	19
Room Setup.....	20
IR Extender Setup (If Applicable).....	21
Device Setup	22
Activity Setup	28
Learning the Basics	29
Controlling Your Legacy Audio/Video Devices	29
What You Should Know About Home Networking	30
Home Networking and Connected Devices	30
Wireless Connectivity	31
Enjoying Streaming Content	32
What You Should Know About Activity-Based Control	32
Watch Activities.....	32
Listen Activities	33
Installing the Software	35
Installing Philips Media Manager	35
Advanced Philips Media Manager Use	35
Philips Media Manager on More PCs	35
Organizing Media Files.....	36
Creating Playlists	36
Upgrading the Firmware	37
Getting the Maximum Out of It	38
Homepage	38
Activities	38

Watching a Broadcasted Program ..	Error! Bookmark not defined.
Watching a Movie Using EPG	Error! Bookmark not defined.
Watching Digital Pictures	Error! Bookmark not defined.
Watching Pictures From Your PC on the RC9800i.....	Error! Bookmark not defined.
Listening to a CD	Error! Bookmark not defined.
Listening to MP3 Audio Files	Error! Bookmark not defined.
Listening to Songs From Your PC via the Docked RC9800i..	Error! Bookmark not defined.
Listening to Internet Radio.....	Error! Bookmark not defined.
Good to Know: Smart Navigation.....	Error! Bookmark not defined.
Good to Know: System Management Area	Error! Bookmark not defined.
Adjusting the Settings.....	Error! Bookmark not defined.
Setup RC9800i.....	Error! Bookmark not defined.
Power Settings.....	Error! Bookmark not defined.
Screen Settings	Error! Bookmark not defined.
Network Settings.....	Error! Bookmark not defined.
Audio Settings.....	Error! Bookmark not defined.
Date/Time.....	Error! Bookmark not defined.
Describe Your Equipment.....	Error! Bookmark not defined.
EPG	Error! Bookmark not defined.
List of Symbols	Error! Bookmark not defined.
FAQ.....	Error! Bookmark not defined.
You're in Trouble?	Error! Bookmark not defined.
Technical Specifications	Error! Bookmark not defined.
General Requirements.....	Error! Bookmark not defined.
Electrical Requirements	Error! Bookmark not defined.
Product description.....	Error! Bookmark not defined.
Glossary.....	Error! Bookmark not defined.
Index	Error! Bookmark not defined.

Guide Through the User Manual

This booklet contains the following chapters;

Important Information, beginning on page 3 gives you an overview of information concerning safety, the helpdesk and services offered by Philips;

The chapter Contents of the Box beginning on page 9 shows you the packaging content;

In Pick Up Your RC9800i and Take a Good Look beginning on page 13, you get acquainted with your new RC9800i Touch Screen Remote Control;

Getting the Settings Right beginning on page 17 guides you through the initial setup;

In Learning the Basics beginning on page 29, you learn more about what you should know with regard to controlling legacy devices, Home Networking, connected devices and Activity-Based Control;

Installing the Software beginning on page 35 explains how you install the Philips Media Manager;

Upgrading the Firmware on page 37 tells you how to upgrade your firmware;

Getting the Maximum Out of It beginning on page 38 shows you how to maximize the use of your RC9800i;

Error! Reference source not found. beginning on page **Error! Bookmark not defined.** explains you how you can change your settings even after you have run through the initial setup;

The Chapter **Error! Reference source not found.** beginning on page **Error! Bookmark not defined.** provides an overview of the symbols used on the RC9800i's screens;

Error! Reference source not found. beginning on page **Error! Bookmark not defined.** gives new RC9800i users an overview of the most frequently asked questions;

When the RC9800i Touch Screen Remote Control doesn't work as you expect, refer to **Error! Reference source not found.** beginning on page **Error! Bookmark not defined.**;

Error! Reference source not found. beginning on page **Error! Bookmark not defined.** gives an overview of the technical specifications of your RC9800i;

In **Error! Reference source not found.** beginning on page **Error! Bookmark not defined.**, you can find definitions of the most important home theater and home network concepts.

Pick Up Your RC9800i and Take a Good Look

Congratulations on your new RC9800i Touch Screen Remote Control! This device is a “must have” to enjoy a real state-of-the-art home entertainment experience. You will see that using the RC9800i is in fact very easy.

First of all you can put away all of your old remote controls, because the RC9800i is the perfect universal remote to replace them all.

But the RC9800i is much more than a remote control! It’s the top-notch appliance for controlling virtually anything that is connected within your home network.

Before we go into details, let’s first have a look at the remote control itself.

In this chapter you will get acquainted with the various elements of the RC9800i. You will learn:

- how to turn the RC9800i on and off;
- how to operate the touch screen;
- how to use the hard keys;
- how to charge the device by means of a cradle;
- the purpose and use of the USB connector.

Powering On and Off

First-Time Power On

The first time you use your RC9800i, you switch it on with the **On/Off Switch**. The On/Off Switch is located at the bottom of the RC9800i.



Note

You might need the On/Off Switch for resetting the RC9800i in the unlikely event that the device doesn’t respond. See **Error! Reference source not found.** beginning on page **Error! Bookmark not defined.**

The first time you activate your RC9800i, the Setup Wizard appears. This wizard will assist you in setting up your RC9800i.

Before you proceed, we advise you to fully charge your RC9800i. See page 15 for more information on how to charge the device.

Everyday Use

During normal everyday use, the RC9800i will automatically go into standby mode when it isn't being used. Thus, you don't need to switch off the RC9800i with the On/Off Switch.

To wake up the RC9800i, do one of the following:
press one of the hard keys;
tap the touch screen; or
tilt the RC9800i as shown below.



The Touch Screen



The RC9800i has a landscape-oriented touch screen. You can operate the touch screen either with your fingers or with a blunt pen tip.

Attention!

Never use a ballpoint pen tip or other sharp object. These objects can damage the touch screen.

The Hard Keys

At the right-hand side of your RC9800i's touch screen you will find several hard keys.



Channel: Press this hard key to go one TV Channel up or down.

Volume: Press this hard key to control the volume.

Mute: Press this hard key to mute the device that is being controlled.

Cursor: Up-Down-Left-Right and OK hard keys. The action resulting from pressing the cursor depends on what is shown on the touch screen. In general the cursor keys allow you to navigate around.

The **Up and Down hard keys** can be either partially or fully pressed:

- Partially: To move through a list one item at a time, partially press the up or down key.
- Fully: To move quickly through a list, fully press the up or down key. If you fully press and hold the keys for more than 5 seconds, the highlight will jump to the top (or bottom) of the list.

The **OK hard key** in the middle of the cursor is used to confirm a selection and to trigger the corresponding action.

Page: Press this hard key to cycle through several screens in a loop. When only one page is available, the Page hard key is inactive.

Back : To quickly move back through the series of screens that you have been viewing, press the Back key. For more information see **Error! Reference source not found.** on page **Error! Bookmark not defined.**

Home: Press this hard key to return to the Homepage.

Charging the RC9800i

The battery level of the RC9800i is displayed on the touch screen. At any time you can charge the device as follows:

Plug the power adapter into the cradle.

Dock the RC9800i in the cradle.

The RC9800i is being charged and an animation of the battery icon appears on the touch screen. 

It takes about 3 hours to fully charge the RC9800i.



When the RC9800i is in standby mode, the battery lasts for approximately 2 weeks. However, we advise you to recharge the device frequently.

Note

When the RC9800i is in standby mode, it will beep from time to time to inform you that the battery is getting low.

The Cradle as Media Adapter

Besides using the cradle for charging the RC9800i, you can also use it as an audio-link Media Adapter. When you connect the cradle to the amplifier of your audio system by means of an audio extension cable (not included), the cradle will become an audio-link Media Adapter.

To turn the cradle into an audio-link Media Adapter, proceed as follows:

Plug one end of the audio extension cable (not included) into the cradle.



Plug the other end of the cable into the amplifier of your audio system.

Dock the RC9800i in the cradle.

If the RC9800i is actually playing music via its speaker, the RC9800i is muted and all audio content will be transferred from the RC9800i to the audio device.

Note

The audio extension cable is not included. For more information on audio extension, see page **Error! Bookmark not defined..**

The USB Connector

The mini USB connector is located at the left-hand side of your RC9800i.

You will need this USB connector to connect to a PC in order to download new firmware when it becomes available. For further information, see [Upgrading the Firmware](#) on page 37



Getting the Settings Right

When starting the RC9800i for the first time, a screen appears to welcome you to the initial startup sequence. During this sequence, a wizard will guide you through the initial set-up screens. The wizard prompts you to perform the following actions:

Going through the **RC9800i settings**:

- Calibrating the touch screen: see page 17.
- Selecting your Location: see page 18.
- Entering the RC9800i's Network information: see page 18.
- Entering information concerning Date/Time Zone.

Going through the **Home Setup**:

- Room Setup;
- IR Extender Setup;
- Device Setup

Going through the **Activity Setup**.

Note

You can exit the initial set-up Wizard at any time by clicking **Exit** on a screen. However, you can run the initial setup only once. Afterwards you can change settings as explained in **Error! Reference source not found.**, beginning on page **Error! Bookmark not defined.**

To navigate through the initial Setup, you can use the soft buttons **Back** and **Next**.

Attention!

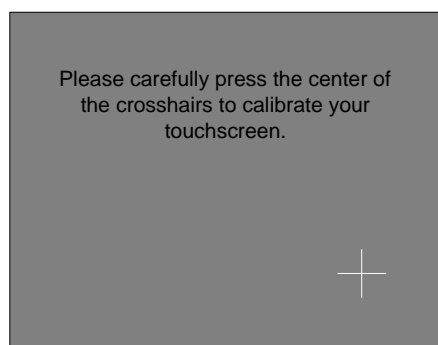
Before you proceed, we advise you to fully charge your RC9800i.

RC9800i Settings

Calibrating the Touch Screen

On first use you have to calibrate the RC9800i's touch screen. Afterwards, you can calibrate the touch screen any time you like to improve its accuracy.

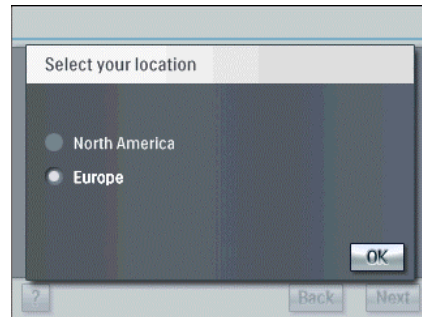
When you activate your RC9800i for the first time the following screen appears:



Tap consecutively the 2 crosshairs that appear.

Selecting Your Location

After calibrating the touch screen, the wizard asks you to select your location.

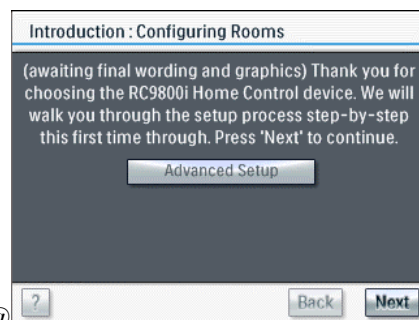


Attention!

The location you select affects the Electronic Programming Guide (EPG) application, the IR code database and the setup questions. For more information about E

Select either North America or Europe.

The following introduction screen appears.



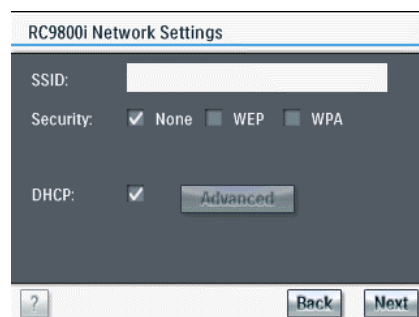
@@@

Tap  to continue.

The Network Settings screen appears.

Network Settings

When you have selected your location, the wizard takes you to the Network Settings.



Enter the settings for your network. Click **Advanced** to enter IP, DNS, Netmask and Gateway settings.

If you want to know more about the individual settings, check the **Error! Reference source not found.** on page **Error! Bookmark not defined.**

To continue, tap **Next**.

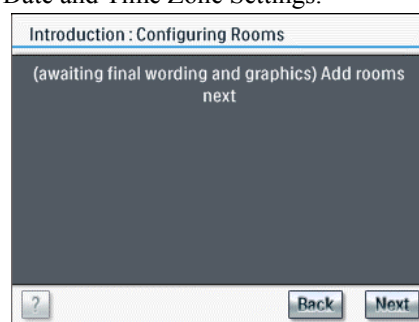
The screen 'Date/Time Zone' appears.

Attention!

Most wireless devices can also operate in **peer-to-peer mode**. This means that there is a direct wireless communication link between two communicating devices. If you have set up devices in peer-to-peer mode, we strongly recommend that you have your wireless home network operate with a Wireless Access Point (WAP) and that you **remove all peer-to-peer links**.

Adjusting Time, Date and Time Zone Settings

When you have completed the Network Settings, the wizard continues with the Date and Time Zone Settings.



Enter the correct data.

Tap **Next**.

The Home Setup process starts.

Note

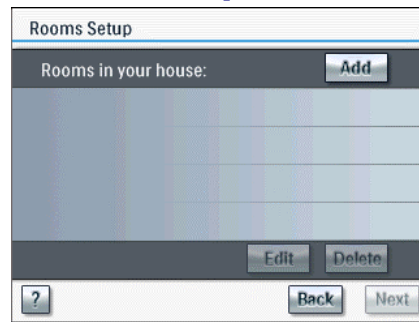
If you want to set the date and time automatically, select the option **Update time automatically**. This connects the RC9800i with a timeserver so that date and time will be updated automatically. Note that this is only possible if you have a network connection.

Home Setup

After going through the RC9800i Settings, the wizard guides you through the Home Setup. This involves:

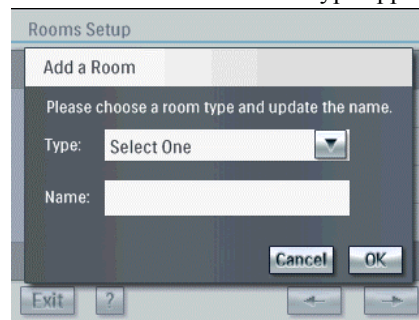
- Adding rooms to the RC9800i;
- Adding IR Extenders if applicable;
- Adding Devices.

Room Setup



Tap **Add**.

The screen to select a room-type appears.



Select the **room type** of your choice.

The name of the room is filled out automatically.

Tip

If you have a room that is not in the list, choose a room that matches your room closest and rename it.

Tap **OK**.

The screen to select a room type appears again the newly added room. If you wish, you can add additional rooms.

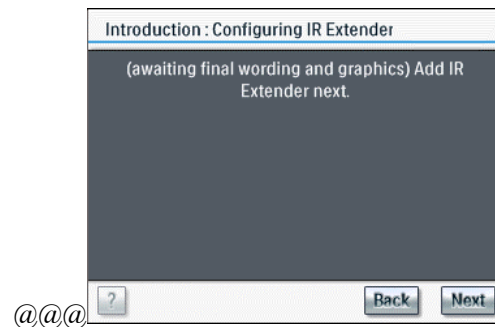
Attention!

Make sure that you add all the rooms that should be part of your home network at once. You cannot return to the previous setup during the initial wizard to add extra rooms.

After adding all your rooms, tap **Next**.

The IR Extender Setup screen appears.

IR Extender Setup (Skip If Not Applicable)



Note

If you don't have a NetX, you may skip this section by pressing **Skip**.

Good To Know: About the NetX

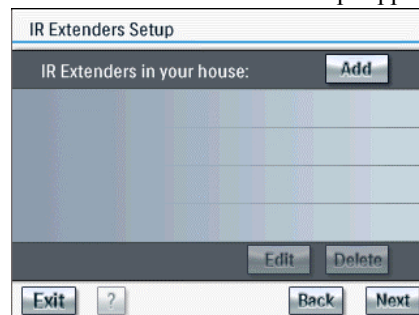
Your RC9800i is only compatible with the NetX IR Extender. The NetX is a part of the Philips Connected Planet solution and extends the control of the RC9800i beyond the line of sight and into multiple rooms/rooms. No wall, closet or obstacle can prevent you from using the RC9800i to control a device that is out of sight. This gives you the ultimate device control around the house. Via the NetX your RC9800i can control your A/V and Home Control devices from virtually any room in your home.

The NetX receives Radio Frequency (RF) signals sent out by RC9800i via your WiFi 802.11b wireless home network and converts them into infrared (IR) signals. These IR signals are then sent out to your IR controlled A/V and home control devices.

Check the NetX Getting Started Guide for more information.

Tap **Next**.

The screen 'IR Extenders Setup' appears.



Tap **Add**.

The screen 'Looking for IR Extenders' appears.



Enter the following data:

- SSID;
- DHCP;
- IP address:
- Subnet Mask.

Tap **OK**.

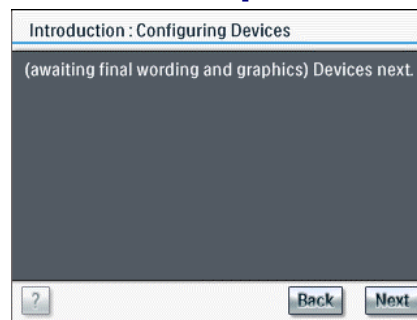
The IR extenders Setup screen appears again.

Tap **Next**.

The Device Setup screen appears.

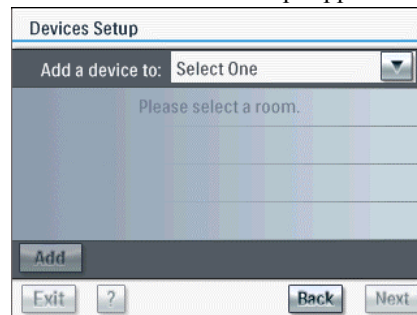


Device Setup



Tap **Next**.

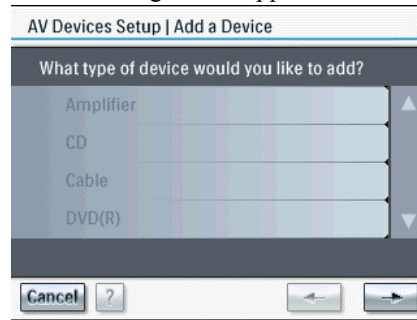
The screen 'Devices Setup' appears.



Select a room.

Tap **Add**.

The following screen appears:



Select a device.

Tap

The following screen appears:



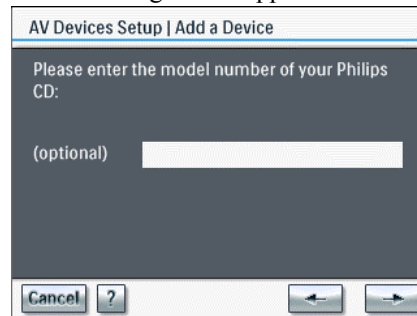
Select the brand of the device.

Tip

Use the alphabet buttons to quickly browse through the list of brands.

Tap

The following screen appears:



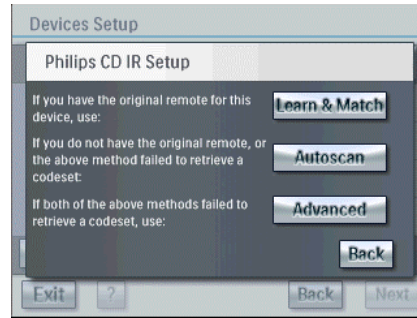
Enter the model number of the device brand.

Note

This is an optional step. If you don't want to enter a model number, you can leave it blank.

Tap

The screen 'Philips CD IR Setup' appears. You will now assign the IR codes to the Philips CD player.



Acquiring an IR Codeset

Good To Know: About IR Codes

Your RC9800i sends out infrared (IR) signals to your devices, which will execute an action, e.g. the VCR starts recording.

For every action the RC9800i sends out a specific IR signal, called an 'IR code'. Your RC9800i contains a huge database that contains numerous IR codes for all kinds of devices.

The RC9800i is set up by default to operate Philips and compatible devices. If you wish to use other device brands, the RC9800i has to 'learn' the specific IR codes for your device from the original Remote Control (RC) that accompanies the device.

@@@ screens niet finaal. L&M niet volledig te testen!

In the following steps the wizard will ask you to learn the IR code for the Philips CD.

10 In the screen 'Philips CD IR Setup', select how to control the device. The selected item is highlighted.

There are 3 different ways to learn your IR codes:

If you have the original remote control for the device, choose **Learn & Match**;

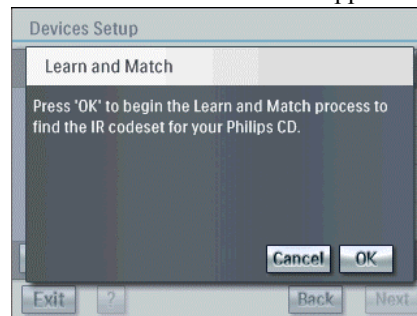
If you don't have the original remote control or **Learn & Match** doesn't work properly, choose **Autoscan**;

If **Learn & Match** nor **Autoscan** work properly, choose **Advanced**.

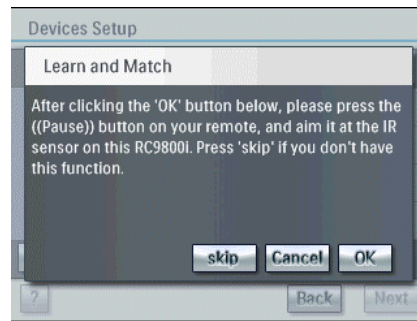
Learn & Match

In this method you use your original remote control to determine the IR codeset that your RC9800i has to use.

- 1 In the screen 'Philips CD IR Setup', tap **Learn & Match**. The screen 'Learn & Match' appears.

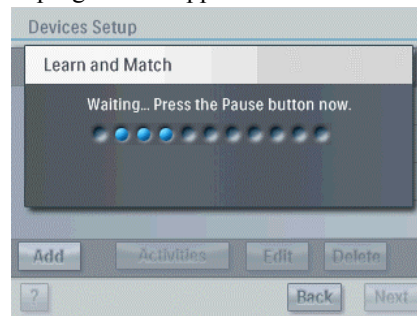


- To start the Learn & Match progress, tap **OK**. The following screen appears:



Tap **OK**.

A progress bar appears:



Aim the IR sender of the original remote control to the RC9800i's IR sensor.

Press the **Pause** button.

A screen with the message 'Learning ...' appears and the codeset will be determined.

If learning was successful, you can optionally enter more detailed information.

Note

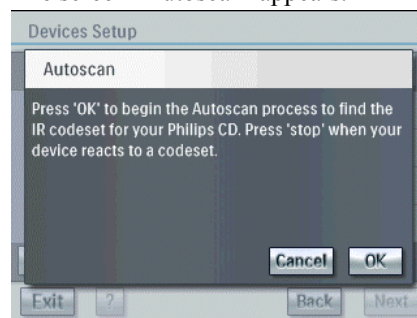
If Learn & Match doesn't work properly you can use the Autoscan method to find an IR codeset for the device.

Autoscan

If you don't have the original remote or the Learn & Match method doesn't work properly, use the Autoscan method. This method automatically sends commands to your device using your RC9800i.

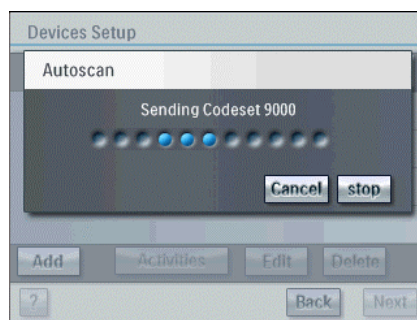
In the screen 'CD Philips IR Setup', tap **Autoscan**.

The screen 'Autoscan' appears.



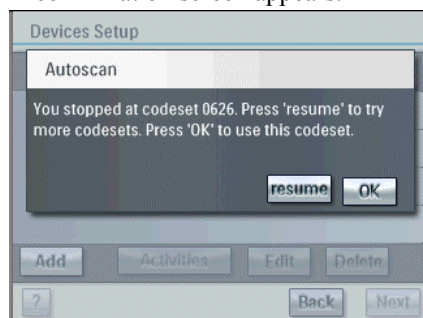
Tap **OK**.

A progress bar appears.



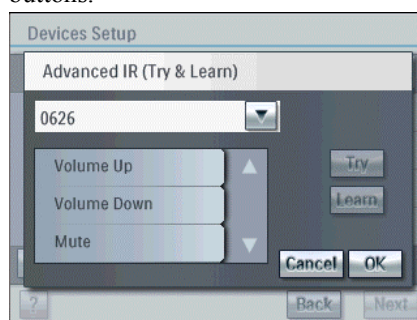
When the device responds, tap **Stop**.

A confirmation screen appears.



To use this codeset, tap **OK**.

The screen 'Advanced (Try & Learn)' appears. Here you can try out more buttons.



To test more buttons, select a button and tap **Try**.

If the device responds, tap **OK**.

or

If the device doesn't respond, tap **Learn**.

Aim the IR sender of the original remote control to the RC9800i's IR sensor.

Press the **Mute** hard key on the remote.

A screen with the message 'Learning ...' appears and the codeset will be determined.

If learning succeeded, you can optionally enter more detailed information.

Note

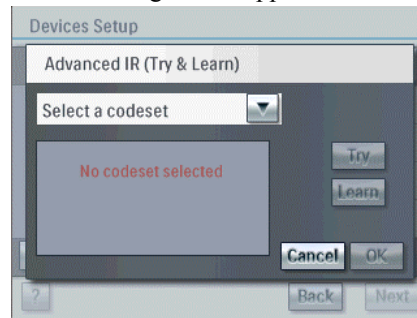
If your device doesn't respond to the Autoscan commands, use the Advanced method.

Advanced

If you don't have the original remote control, or if **Autoscan** doesn't work properly, use the Advanced method. With this method, you can choose an IR codeset and try this codeset on one or more buttons.

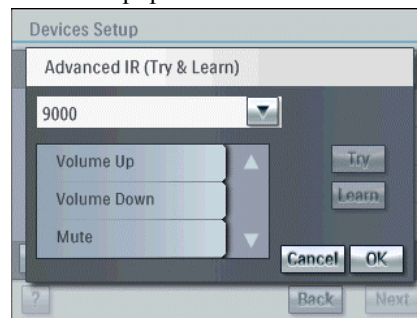
In the screen 'Philips CD IR Setup', tap **Advanced**.

The following screen appears:



Select a codeset.

The list is populated with several buttons.



Select a button and tap **Try**.

If the device responds, tap **OK**.

or

If the device doesn't respond, tap **Learn**.

Aim the IR sender of the original remote control to the RC9800i's IR sensor.

Press the **Mute** hard key on the remote.

A screen with the message 'Learning ...' appears and the codeset will be determined.

If learning succeeded, you can optionally enter more detailed information.

Note

You find also red buttons in the list. These red buttons are buttons you're device does not know yet. To learn these buttons, select them and tap **Learn**.

Configure Device

After setting up all the rooms and devices, you can add more detailed information concerning your devices. These questions are being asked to define how best to control your device, questions concerning

Power on;

Power on-delay;

Channel tuning;

Inter-digit delay;

Input selection;

Power on state.

To navigate through these questions, use the **Back** and **Next** soft buttons.

Activity Setup

The activity setup helps you to connect the devices properly. To do so the RC9800i asks you questions during the setup concerning:

Input selection;
Channel tuning.

To navigate through these questions, use the **Back** and **Next** soft buttons.

The wizard will inform you when setup was completed successfully.



Learning the Basics

Now that your RC9800i is ready for use, you're ready to learn the basics of its operation. In this chapter, you get to know more about controlling your legacy devices, home networking and Activity-Based Control.

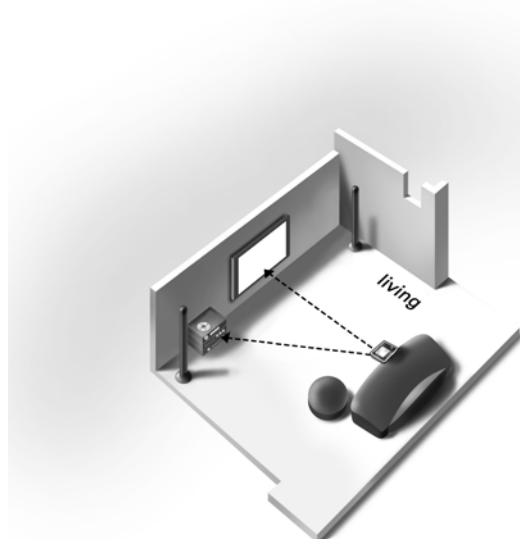
Controlling Your Legacy Audio/Video Devices

Legacy audio-video devices are devices that are typically operated by means of a remote control. Your TV, for example, is such a device. When you press a button on the TV's remote control (e.g. Mute), the remote control sends an Infrared (IR) signal to the TV. The TV receives this signal and executes the command (in this case: mute the speakers).

Today, most households own many legacy A/V devices. As most, if not all, of these devices come with their own remote control, the coffee table is getting pretty crowded.

When you encounter this situation, the RC9800i is the perfect solution for you.

The RC9800i is a universal remote control that can control a virtually unlimited number of devices, such as the TV, the VCR, the DVD and so on. The RC9800i is even more advanced: it allows you, by means of Activity-Based Control, to automate and substantially simplify your listening and viewing experience. To learn the ins and outs of this powerful functionality, see [What You Should Know About Activity-Based Control](#) on page 30.

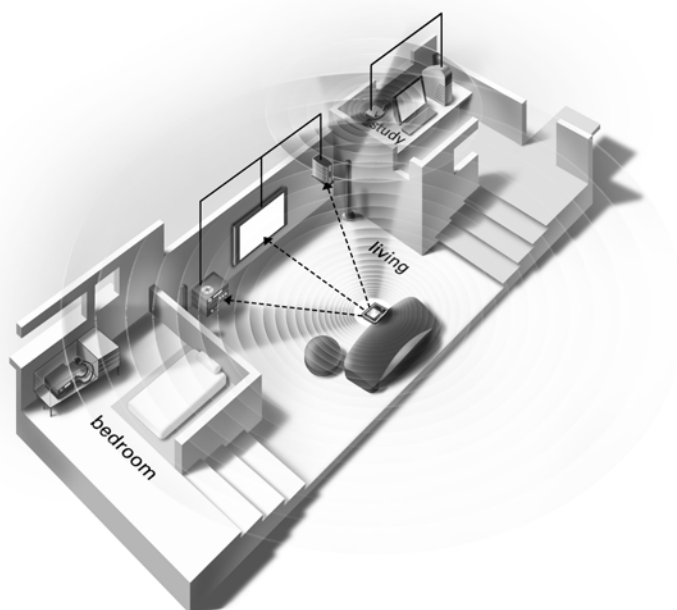


In the figure above, you can see the RC9800i functioning as a universal remote control, controlling the audio system and the LCD TV.

What You Should Know About Home Networking

Home Networking and Connected Devices

The RC9800i goes one step further than ordinary universal remotes. It is revolutionary because your RC9800i can operate all of the connected devices in your home network.



In the home plan above a typical situation is depicted: A desktop PC (with peripherals like monitor, mouse and keyboard) and a Wireless Access Point (WAP) are located in the study. The details of the Wireless Access Point will be explained further on in this chapter.

In the living room, an LCD TV is hanging against the wall. An audio system sits in the left-hand corner and there is a Media Adapter in the right-hand corner. The Media Adapter is wired to the LCD TV or to the audio system.

Finally there is an audio system located in the cabinet in the bedroom. You will also notice a Philips NetX Converter mounted in the cabinet. A NetX converter converts RF signals sent out by your RC9800i into IR signals. Please refer to page 55 for more information on the NetX converter.

Attention!

A NetX is a so-called IR Extender. Take into account that your RC9800i refers to IR Extenders and not to a NetX.

As you can see, the RC9800i on the couch in the living room, controls **not only legacy audio/video devices**, such as the TV and the audio system, **but also connected devices** such as the PC and the Media Adapter.

Connected devices are devices that comply with the **UPnP (Universal Plug and Play) Protocol**. UPnP allows various devices like PCs, peripherals (e.g. printer, flatbed scanner) and intelligent networked appliances (e.g. Media Adapter) to communicate with each other. More specifically, UPnP allows connected devices to discover each other and to communicate about their capabilities and their content.

Wireless Connectivity


Connected devices can be wired, yet nowadays they are becoming more and more a part of a wireless network. There are various technologies in use for wireless networking. Most of them are WiFi 802.11 variants, e.g. '802.11a', '802.11b' and '802.11g'. The RC9800i can be operated in both 802.11b and 802.11g networks.

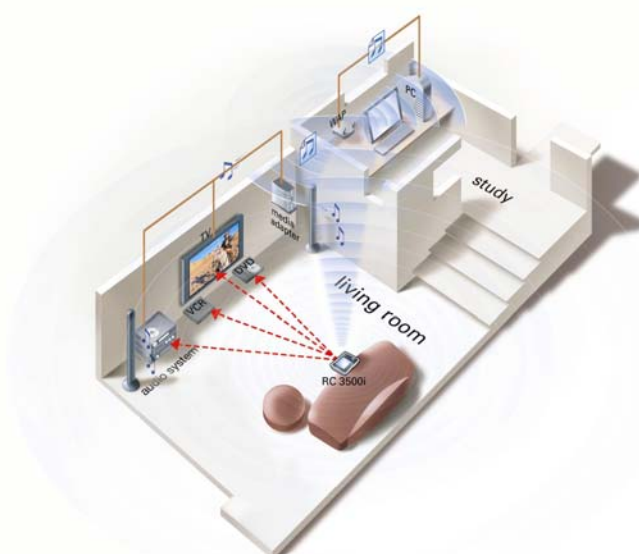
The RC9800i uses wireless technology to connect to:
networked entertainment devices, such as a Philips Connected Planet TV or audio system;

PCs;

bridge devices like a Media Adapter. A **Media Adapter** is a wireless digital device that acts as bridging device. It allows movies, pictures or music files to be transferred from your PC to other legacy A/V devices like TVs, audio systems, and so on.

The center of the wireless home network is the Wireless Access Point (WAP). All information that is exchanged between devices in the wireless network transits via the WAP.

For example, let's see how an MP3-file, residing on the PC's hard disk, can be played on the audio system in the living room. After selecting the file on the RC9800i and pressing the play  soft button, the Media Adapter and the PC establish communication via the WAP. The file's digital content is wirelessly transferred from the PC to the Media Adapter. The Media Adapter then converts this digital content into an analog signal that feeds into the audio system's amplifier and from there it goes to the speakers. You can now use the RC9800i to control the volume in much the same way as you would do with the audio system's original remote control.



Enjoying Streaming Content

In addition to the content of connected devices, your RC9800i can also control ustreaming content from the Internet (e.g. Internet Radio, Internet Repositories with audio files, pictures or movie files). If your WAP is connected to the modem of a broadband Internet connection, you can make use of Internet streams.

Note

To make use of Internet streams, you need a Philips Connected Planet device equipped with an audio output..

For example, you want to listen to your favorite Internet Radio station. With the RC9800i you can easily initiate the stream. You need only browse the list of stations, select your favorite one and use the RC9800i to select the audio system in the living room.

Note

The user manual concerning Internet streams will be available in 2005.

What You Should Know About Activity-Based Control

Your RC9800i comes equipped with a very powerful feature called **Activity-Based Control**. Activity-Based Control allows you to automate and substantially simplify your listening and viewing experience. When using Activity-Based Control you no longer have the hassle of switching on/off several devices and selecting the appropriate inputs. Instead, you indicate the activity you want to do, e.g. watch DVD on your LCD TV.

The RC9800i will take care of switching on your LCD TV and DVD while tuning the TV to the appropriate input.

Whether the controlled devices are connected or are legacy A/V devices does not really matter. The RC9800i blends them into a single unified control concept: Activity-Based Control.

To control all of your audio-video devices, the RC9800i needs to know where they are located and how they are connected to each other. This is tackled during a one-time set-up. During set-up, you tell your RC9800i by means of an easy-to-use wizard which devices are available in a room and how they are connected. Your RC9800i then knows, each time you use it, which devices are available in a specific room. Moreover, the RC9800i also knows how to switch them on and off, and how to select the appropriate inputs. You, as a user, will not have to bother with all of this: the RC9800i will take care of it all.

For further information on set-up, see Getting the Settings Right beginning on page 19.

Activity-Based Control falls into two categories: watch activities and listen activities.

Watch Activities

You can enjoy a whole range of 'Watch' Activities. Just a few examples:

Tonight, there is a great movie on cable that you want to watch on your LCD TV. With the RC9800i, you select the cable device as the source that holds the content and the LCD TV as the device on which you'll be watching the movie. Next, the RC9800i will show you a screen with all of the relevant TV control buttons as if it were the TV's remote.

You want to watch television, but don't know what is on. Take your RC9800i and launch the Electronic Program Guide (EPG). You can select any program from the EPG; the RC9800i will take care of tuning your TV to the appropriate channel.

Some friends are coming over to see your summer holiday pictures. It won't be easy for everyone to gather around the PC to view the photos. Why not view them on the LCD TV in the living room? With a Media Adapter connected to the TV, you are all set, and with the RC9800i, you can control the whole viewing session, including previewing photos on the remote's screen and setting up a slide show.

A couple of weeks ago, you went snowboarding with some friends. Now you would love to see those pictures again. You can do that right away on your RC9800i's screen.

Doing all of the above is in fact very simple and it just takes 3 steps. Let's assume that you want to watch a DVD on your LCD TV. This is what you would do:

- 12 Are you going to watch or listen to something? *Watch*
- 13 Which device will you be watching? *The LCD TV*
- 14 Which device holds the content that you will be watching? *The DVD player*

For further information, see Activities on page 36.

Listen Activities

You can perform a whole range of 'Listen' activities:

When you want to listen to a CD on your audio system, you no longer need to look for the right remote. With your RC9800i you can control your CD-player and your audio system.

Instead of listening to a CD, you would like to enjoy some MP3 audio-files from your PC. With the RC9800i you can browse through your PC folders, select your favorite songs and play them on any connected audio system.

While you're reading a new novel you would like to have some background music. You choose your RC9800i as the device that you'll be listening to and stream an Internet radio station to it.

Note

The undocked device only features a speaker intended for pre-listening. Enjoying music via the RC9800i can be done best via the docking, connected by a line to your audio system. For further information, please check The Cradle as Media Adapter as from page 17.

Again, doing any of the above is very simple. For example, to listen to a CD these are the steps you take:

- 12 Are you going to watch or listen to something? *Listen*
- 13 Which device will you be listening to? *The audio system*
- 14 Which device holds the content that you want to listen to? *The CD player*

All of the relevant controls of the selected device appear on the RC9800i screen. Press the play button ... and here comes the music.

For further information, see Activities on page36.

Installing the Software

Installing Philips Media Manager

This software makes the music, photo and movie files on your computer available for transfer from your computer to your television.

- 1 Place the Philips Media Manager CD in your PC's CD or DVD drive and install the Philips Media Manager Software.
The CD starts automatically.
- 2 In the menu that appears, click **Install Philips Media Manager** and follow the on-screen instructions.
- 3 To start the program, click **Start > Programs > Philips Media Manager**.
When opening the Philips Media Manager for the first time, you will be asked if you want to add a folder and scan for media files.
- 4 Open a drive or a folder that contains media files, for example, the **My Documents** folders if you have stored music, photos or movies there.
- 5 To add files to the Media Manager, click one of the media categories: **Music**, **Photos** or **Movies**.
- 6 Click **Add Music** below the media categories.
- 7 Select a folder or one or more media files and click **Open** to add the selected folder or files to the Media Manager window.

Note

When you close the Media Manager window, its icon remains active in the status notification area (lower right-hand corner of the desktop). This icon needs to remain visible. Double-clicking the icon opens the Media Manager window.

If the CD does not start automatically, double-click **My computer**. Then click the **CD-ROM drive** icon, and finally click the **Setup.exe** to start the CD.

Advanced Philips Media Manager Use

Philips Media Manager on More PCs

The Philips Media Manager can be run on more than one computer at the same time. To do so, proceed as follows:

- 1 Install the Philips Media Manager in the same way as you did for the first computer. Perform steps 1-4 of Installing Philips Media Manager.
- 2 In the Media Manager window, click **Settings**.
- 3 Click the **Server** tab and change the Server name.

Note

This server name will be shown in the top menu on your television screen. That way you can keep separated all of the computers in the network that are simultaneously running the Philips Media Manager.

Organizing Media Files

To help you organize and sort your media files, right-click a music track, photo or movie and select **Edit Media Information**.

Creating Playlists

To create a playlist, right-click a music track or movie and select **Add to Playlist**.

Upgrading the Firmware

@@@How can users know when new firmware is available? By Agent services(registration > mail)? Check Mark Harmsen

The RC9800i offers you a mechanism to upgrade your firmware. You should consult the website first to be sure that new firmware is available. If so, proceed as follows:

Go to www.homecontrol.philips.com and download the new firmware on your PC.

Start the RC9800i Firmware Upgrade Tool.

Connect the RC9800i to your PC with the USB cable.



the homepage of the RC9800i, tap Settings.

The screen Settings appears.

Tap Setup RC9800i.

The screen RC9800i Settings appears.

Tap Download New Firmware.

The RC9800i will reboot and reconnect.

Some consecutive messages will appear on the PC monitor. When the firmware is upgraded, the RC9800i will reboot automatically.

Getting the Maximum Out of It

@@@alle schermen updaten

This chapter explains in detail the RC9800i features that allow you to maximize your entertainment experience.

Homepage

The Homepage of the RC9800i is the starting point for all activities.



@@@ geen finale Screenshot

At the top of the Homepage, the current room (in this case the living room) is displayed. The Homepage itself lists the 3 activities: **Watch**, **Listen** and **Browse**.

Activities

The following list shows you all the possible activities together with the device(s) you can use to perform the activity

	Watch	Listen	Browse
TV	✓		
VCR	✓		
DVD	✓		
Satellite	✓		
Cable box TV	✓		
PVR	✓	✓	✓
PC			✓
CD		✓	
RC9800i			✓
	Watch	Listen	Browse
Amplifier		✓	
Audio system		✓	
Cable radio		✓	
Cable satellite		✓	
Internet Radio			✓

