

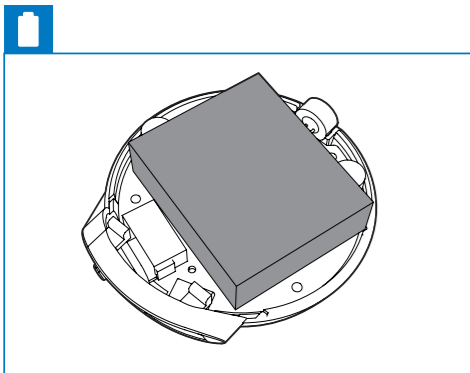


EN User manual
CS Příručka pro uživatele
FR Mode d'emploi

PHILIPS

P&F USA Inc.
PO Box 2248
Alpharetta, GA 30023-2248
Phone: 1 866 309 0845

Meet Philips at the Internet
<http://www.philips.com/welcome>



All registered and unregistered trademarks are property of their respective owners.
© 2013 Koninklijke Philips Electronics N.V.
All rights reserved.
SBT30_17_UM_V4.0



EN

1 Important

Safety

Important Safety Instructions

- 1 Read these instructions.
- 2 Keep these instructions.
- 3 Heed all warnings.
- 4 Follow all instructions.
- 5 Do not use this apparatus near water.
- 6 Clean only with dry cloth.
- 7 Do not block any ventilation openings. Install in accordance with the manufacturer's instructions.
- 8 Do not install near any heat sources such as radiators, heat registers, stoves, or other apparatus (including amplifiers) that produce heat.
- 9 Only use attachments/accessories specified by the manufacturer.
- 10 Refer all servicing to qualified service personnel. Servicing is required when the apparatus has been damaged in any way, such as power-supply cord or plug is damaged, liquid has been spilled or objects have fallen into the apparatus, the apparatus has been exposed to rain or moisture, does not operate normally, or has been dropped.
- 11 Apparatus shall not be exposed to dripping or splashing.
- 12 Do not place any sources of danger on the apparatus (e.g. liquid filled objects, lighted candles).

Warning

- Never remove the casing of this apparatus.
- Never lubricate any part of this apparatus.
- Never place this apparatus on other electrical equipment.

Notice

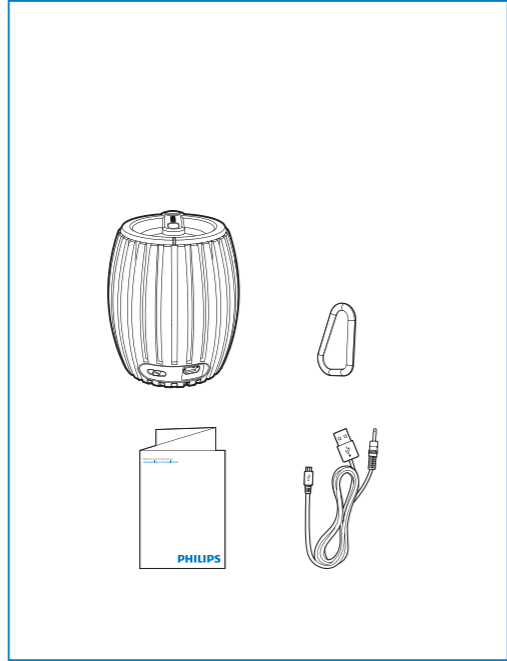
Any changes or modifications made to this device that are not expressly approved by Philips Consumer Lifestyle may void the user's authority to operate the equipment.

Notice for the USA and Canada
This device complies with Part 15 of the FCC Rules and RSS standard of Industry Canada. Operation is subject to the following two conditions:

- 1 this device may not cause harmful interference, and
- 2 this device must accept any interference received, including interference that may cause undesired operation.

This equipment has been tested and found to comply with the limits for a Class B digital device, pursuant to part 15 of the FCC Rules and ICES-003 of Industry Canada. These limits are designed to provide reasonable protection against harmful interference in a residential installation. This equipment generates, uses, and can radiate radio frequency energy and, if not installed and used in accordance with the instruction manual, may cause harmful interference to radio communications.

However, there is no guarantee that interference will not occur in a particular installation. If this equipment does cause harmful interference



to radio or television reception, which can be determined by turning the equipment off and on, the user is encouraged to try to correct the interference by one or more of the following measures:

- Relocate the receiving antenna.
- Increase the separation between equipment and receiver.
- Connect the equipment into an outlet on a circuit different from that to which the receiver is connected.
- Consult the dealer or an experienced radio/TV technician for help.

RF Radiation Exposure Statement: This equipment complies with FCC's and IC's RF radiation exposure limits set forth for an uncontrolled environment. The antenna(s) used for this transmitter must be installed and operated to provide a separation distance of at least 20 cm from all persons and must not be collocated or operating in conjunction with any other antenna or transmitter. Installers must ensure that 20cm separation distance will be maintained between the device (excluding its handset) and users.

Disposal of your old product

Your product is designed and manufactured with high quality materials and components, which can be recycled and reused.

Never dispose of your product with other household waste. Please inform yourself about the local rules on the separate collection of electrical and electronic products and batteries. The correct disposal of these products helps prevent potentially negative consequences on the environment and human health.

Your product contains batteries, which cannot be disposed of with normal household waste. Please inform yourself about the local rules on separate collection of batteries. The correct disposal of batteries helps prevent potentially negative consequences on the environment and human health.

Please visit www.recycle.philips.com for additional information on a recycling center in your area.
Always bring your product to a professional to remove the built-in battery.

Environmental information

All unnecessary packaging has been omitted. We have tried to make the packaging easy to separate into three materials: cardboard (box), polystyrene foam (buffer) and polyethylene (bags, protective foam sheet). Your system consists of materials which can be recycled and reused if disassembled by a specialized company. Please observe the local regulations regarding the disposal of packaging materials, exhausted batteries and old equipment.

Be responsible Respect copyrights

The making of unauthorized copies of copy-protected material, including computer programs, files, broadcasts and sound recordings, may be an infringement of copyrights and constitute a criminal offence. This equipment should not be used for such purposes.

Note

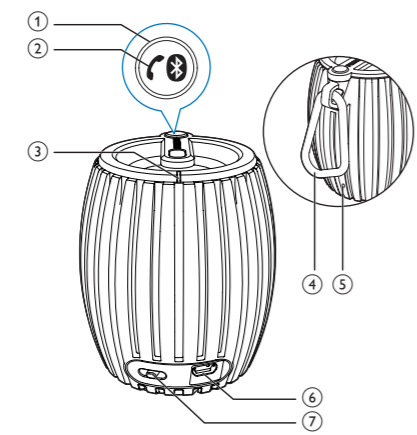
- The type plate is located on the bottom of the apparatus.

2 Your Bluetooth Speaker

Congratulations on your purchase, and welcome to Philips! To fully benefit from the support that Philips offers, register your product at www.philips.com/welcome.

Introduction

With this speaker, you can enjoy audio from the compatible Bluetooth device or your PC/Mac.



3 Get started

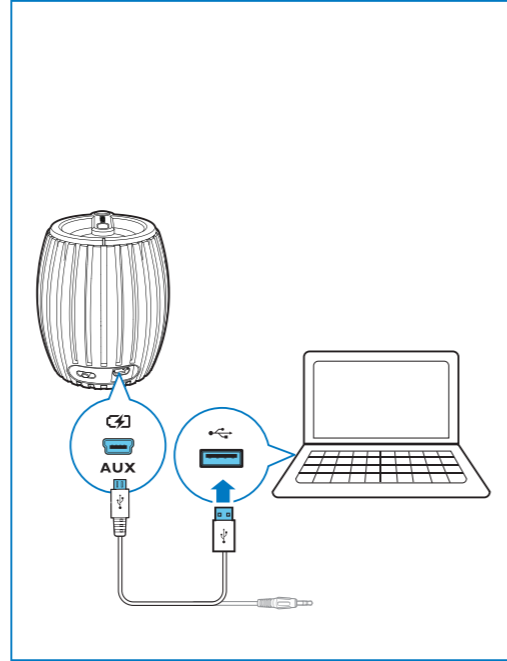
Always follow the instructions in this chapter in sequence. If you contact Philips, you will be asked for the model and serial number of this apparatus. The model number and serial number are on the bottom of the apparatus. Write the numbers here:

Model No. _____
Serial No. _____

Power supply

The speaker can operate on built-in rechargeable battery.

To recharge the built-in battery:
Connect micro USB socket (⑤) with PC through supplied USB cable.



- The power indicator (①) turns on (white).
- The power indicator turns off when it's fully charged.

The Carabiner

The carabiner (②) is used for easy carrying or hanging, not for climbing support or fall protection.

4 Play

Play from a Bluetooth device

Note

- The effective operation range between the speaker and your Bluetooth device is approximately 10 meters (30 feet).

- 1 Slide (②) towards ↗ to select Bluetooth audio source.
→ The Bluetooth indicator (①) flashes (Blue)
- 2 Activate the Bluetooth function in your Bluetooth device.
- 3 Select "PHILIPS SBT30" on your Bluetooth device for pairing.
→ The speaker beeps twice and the Bluetooth indicator (①) stays steadily on (Blue)
 - For some devices, you may need to input "0000" as pairing password.
- 4 Start music play on your Bluetooth device.

When there is an incoming call:

- Press Bluetooth button (①) to pick up the call.
- Press Bluetooth button (①) again to hang up the call.

Tip

- You can speak to the MIC (④) to get the best speakerphone performance.

Play from an external device

- 1 Slide (②) towards AUX to select Aux-in audio source.
→ The power indicator (①) turns white.
- 2 Connect your speaker with an external device through the supplied USB cable.
- 3 Start music play on your device.

5 Product information

Note

- Product information is subject to change without prior notice.

Specifications

Amplifier

Rated Output Power 2W RMS
Signal to Noise Ratio >70dB
Aux-in Link 600 mV RMS, 10 kohm

Bluetooth

Bluetooth specification V2.1+EDR
Supported Profiles HFPv1.6, AD2Pv1.2, HSPv1.2
Advanced features Echo and noise cancellations
Range 10 m/33 feet line of sight

General information

DC power input USB: 5V, 500mA;
Built-in Li-Polymer battery 3.7V 500mAh
Battery working time >8 hours
Dimensions- Main Unit (diameter x height) D68mm * H81mm
Weight- Main Unit 0.14 kg

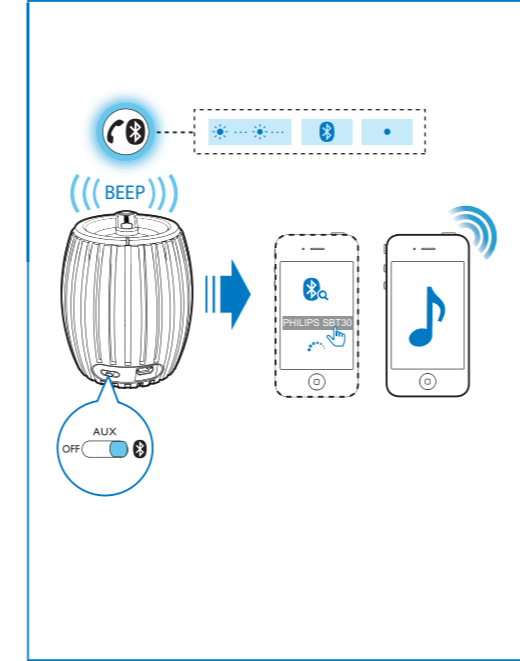
6 Troubleshooting

Warning

- Never remove the casing of this apparatus.

To keep the warranty valid, never try to repair the system yourself. If you encounter problems when using this apparatus, check the following points before requesting service. If the problem remains unsolved, go to the Philips web site (www.philips.com/welcome). When you contact Philips, ensure that the apparatus is nearby and the model number and serial number are available.

- No power**
- Recharge your speaker.



- No sound**
- Adjust volume on your mobile phone or PC/Mac.
 - Make sure that your Bluetooth mobile phone is within the effective operation range.
 - Check if you have selected the correct audio source.

- No response from the speaker**
- Restart the speaker.

ES

1 Importante

Seguridad

Instrucciones de seguridad importantes

- 1 Lea estas instrucciones.
- 2 Guarde estas instrucciones.
- 3 Preste atención a todas las advertencias.
- 4 Siga todas las instrucciones.
- 5 No use este aparato cerca del agua.
- 6 Utilice únicamente un paño seco para la limpieza.
- 7 No bloquee las aberturas de ventilación. Realice la instalación de acuerdo con las indicaciones del fabricante.
- 8 No instale cerca ninguna fuente de calor como, por ejemplo, radiadores, rejillas de calefacción, hornos u otros aparatos que produzcan calor (incluidos los amplificadores).
- 9 Use exclusivamente los dispositivos/accesorios indicados por el fabricante.
- 10 El servicio técnico debe realizarlo siempre personal cualificado. Se requerirá servicio de asistencia técnica cuando el aparato sufra algún tipo de daño como, por ejemplo, que el cable de alimentación o el enchufe estén dañados, que se haya derramado líquido o hayan caído objetos dentro del aparato, que éste se haya expuesto a la lluvia o humedad, que no funcione normalmente o que se haya caído.
- 11 No exponga el aparato a goteos ni salpicaduras.
- 12 No coloque sobre el aparato objetos que puedan suponer un peligro (por ejemplo, objetos que contengan líquido o velas encendidas).

Advertencia

- No quite nunca la carcasa de este aparato.
- No lubrique ninguna pieza de este aparato.
- No coloque nunca este aparato sobre otro equipo eléctrico.

Aviso

Cualquier cambio o modificación que se realice en este dispositivo que no esté aprobada expresamente por Philips Consumer Lifestyle puede anular la autoridad del usuario para utilizar el equipo.

Nota para EE.UU. y Canadá
Este dispositivo cumple la Parte 15 del reglamento de la FCC y el estándar RSS de Industry Canada. El funcionamiento está sujeto a dos condiciones:

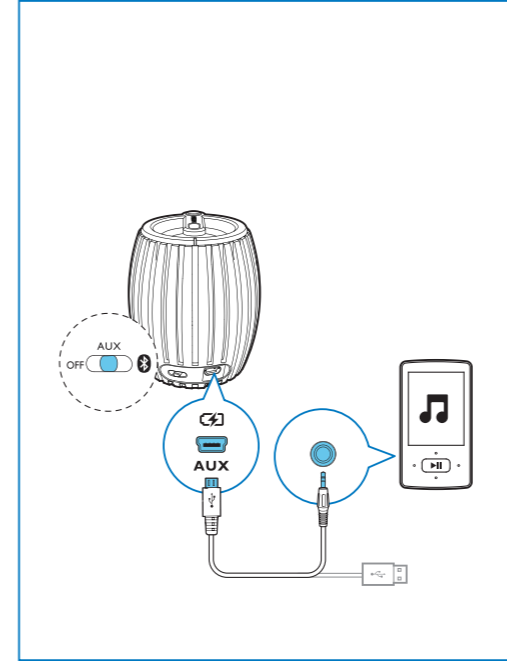
- 1 este dispositivo no puede causar interferencias dañinas y
- 2 este dispositivo debe aceptar cualquier interferencia que reciba, incluyendo aquellas que puedan causar un funcionamiento no deseado.

Este equipo ha sido probado y cumple los límites establecidos para los dispositivos digitales de clase B, de acuerdo con la sección 15 del reglamento FCC y ICES-003 de Industry Canada. Estos límites se han establecido para proporcionar una protección razonable contra las interferencias perjudiciales en instalaciones particulares. Este aparato genera, utiliza y puede emitir energía de frecuencias de radio y, si no se instala y utiliza según el manual de instrucciones, puede provocar interferencias perjudiciales en las comunicaciones de radio.

No obstante, no hay garantías de que no se produzcan interferencias en una instalación particular. Si el equipo causa interferencias perjudiciales en la recepción de radio o televisión, que se puedan percibir encendiendo y apagando el equipo, se recomienda al usuario que intente corregirlas tomando una o más de las siguientes medidas:

- Cambie la posición de la antena receptora.
- Aumente la separación entre el aparato y el receptor.
- Conecte el equipo a una toma de corriente de un circuito distinto al que está conectado el receptor.
- Para obtener ayuda, póngase en contacto con el distribuidor o con un técnico de radio o televisión con experiencia.

Declaración sobre la exposición a las radiaciones de radiofrecuencia: Este equipo cumple con los límites de exposición a las radiaciones de radiofrecuencia que establece la FCC e IC, para proteger el medio ambiente. Las antenas utilizadas para este transmisor deben instalarse y pensarse en funcionamiento para proporcionar una distancia mínima



de 20 cm de separación de todas las personas y no deben colocarse ni funcionar junto con cualquier otra antena o transmisor. Los instaladores deben asegurarse de que se mantiene una distancia de 20 cm de separación entre el dispositivo (excluido el microteléfono) y los usuarios.

Cómo deshacerse del producto antiguo

El producto ha sido diseñado y fabricado con materiales y componentes de alta calidad que pueden reciclarse y reutilizarse.

Nunca se deshaga del producto con el resto de la basura doméstica. Infórmele de la legislación local sobre la recogida selectiva de pilas y productos eléctricos y electrónicos. La eliminación correcta de estos productos ayuda a evitar consecuencias potencialmente negativas para el medio ambiente y la salud humana.

Este producto contiene pilas que no se pueden desechar con la basura normal del hogar. Infórmele de la legislación local sobre la recogida selectiva de baterías. La eliminación correcta de las pilas ayudará a prevenir posibles consecuencias negativas para el medio ambiente y la salud.

Visite www.recycle.philips.com para obtener más información sobre un centro de reciclaje de su zona.

Lleve siempre el producto a un profesional para que éste se encargue de quitar la batería integrada.

Información medioambiental

Se ha suprimido el embalaje innecesario. Hemos intentado que el embalaje sea fácil de separar en tres materiales: cartón (caja), espuma de poliestireno (corcho) y polietileno (bolsas, lámina de espuma protectora). El sistema se compone de materiales que se pueden reciclar y volver a utilizar si lo desmonta una empresa especializada. Siga la normativa local acerca del desecho de materiales de embalaje, pilas agotadas y equipos antiguos.

Be responsible Respect copyrights

La copia no autorizada de material protegido contra copia, incluidos programas informáticos, archivos, emisiones y grabaciones de sonido, puede infringir los derechos de copyright y constituir un delito. Este equipo no se debe utilizar para tales fines.

Note

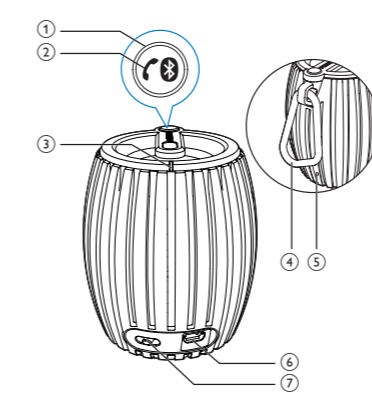
- La placa de identificación está situada en la parte inferior del dispositivo.

2 Su altavoz Bluetooth

Le felicitamos por su compra y le damos la bienvenida a Philips. Para poder beneficiarse por completo de la asistencia que ofrece Philips, registre el producto en www.philips.com/welcome.

Introducción

Con este altavoz, puede disfrutar del audio de un dispositivo Bluetooth compatible u del PC/Mac.



3 Introducción

Siga siempre las instrucciones de este capítulo en orden. Si se pone en contacto con Philips, se le preguntará el número de serie y de modelo del aparato. El número de modelo y el número de serie están en la parte inferior del aparato. Escriba los números aquí:
Número de modelo _____
Número de serie _____

Fuente de alimentación

El altavoz puede funcionar con la batería recargable incorporada.

Para recargar la batería integrada:
Conecte la toma micro USB (⑤) al PC mediante el cable USB suministrado.

- El indicador de alimentación (①) se enciende (blanco).
- El indicador de alimentación se apaga cuando está completamente cargado.

Gancho

El mosquetón (②) se utiliza para transportar o colgar fácilmente, no como soporte para escalada o protección frente a caídas.

4 Reproducción

Reproducción desde un dispositivo Bluetooth

Note

- El alcance de funcionamiento efectivo entre el altavoz y el dispositivo Bluetooth es de 10 metros aproximadamente.

- 1 Deslice (②) hacia ↗ para seleccionar la fuente de audio Bluetooth.
→ El indicador de Bluetooth (①) parpadea (azul).
- 2 Active la función de Bluetooth en su dispositivo Bluetooth.
- 3 Seleccione "PHILIPS SBT30" en el dispositivo Bluetooth que va a emparejar.
→ El altavoz emite dos pitidos y el indicador de Bluetooth (①) se mantiene encendido (azul).
- Para algunos dispositivos, puede que deba introducir "0000" como contraseña de emparejamiento.

- 4 Inicie la reproducción en el dispositivo Bluetooth.

Cuando hay una llamada entrante:

- Pulse botón de Bluetooth (①) para responder a la llamada.
- Pulse botón de Bluetooth (①) otra vez para colgar la llamada.

Consejo

- Puede hablar al micrófono (④) para obtener el mejor rendimiento del manos libres.

Reproducción desde un dispositivo externo

- 1 Deslice (②) hacia AUX para seleccionar la fuente de audio de la entrada auxiliar.
→ El indicador de alimentación (①) se enciende en blanco.
- 2 Conecte el altavoz a un dispositivo externo mediante el cable USB suministrado.
- 3 Inicie la reproducción en el dispositivo.

5 Información del producto

Note

- La información del producto puede cambiar sin previo aviso.

Especificaciones

Amplificador

Potencia de salida 2W RMS
Relación señal/ruido >70 dB
Conexión de entrada auxiliar 600 mV RMS, 10 kohmios

Bluetooth

Especificación de Bluetooth Versión 2.1+EDR
Perfiles compatibles HFP versión 1.6, AD2P versión 1.2, HSP versión 1.2
Funciones avanzadas Eliminación del ruido y del eco
Alcance 10 m en línea de visión

Información general

Entrada de alimentación de CC USB: 5V, 500 mA;
Batería de polímero de litio integrada 3,7V, 500 mAh
Tiempo de funcionamiento de la batería >8 horas
Dimensiones de la unidad principal 68 mm (diámetro) * 81 mm (altura)
Peso (unidad principal) 0,14 kg

6 Solución de problemas

Advertencia

- No quite nunca la carcasa de este aparato.

Para que la garantía mantenga su validez, no trate nunca de reparar el sistema usted mismo.

Si tiene problemas al usar este aparato, compruebe los siguientes puntos antes de llamar al servicio técnico. Si no consigue resolver el problema, vaya al sitio Web de Philips (www.philips.com/welcome). Cuando se ponga en contacto con Philips, asegúrese de que el aparato esté cerca y de tener a mano el número de modelo y el número de serie.

No hay alimentación

- Recargue el altavoz.

No hay sonido

- Ajuste el volumen en el teléfono móvil o PC/Mac.
- Asegúrese de que el teléfono móvil está dentro del alcance de funcionamiento efectivo.
- Compruebe si ha seleccionado la fuente de audio correcta.

El altavoz no responde.

- Reinicie el altavoz.

FR

1 Important

Sécurité

Consignes de sécurité importantes

- 1 Lisez attentivement ces consignes.
- 2 Conservez soigneusement ces consignes.
- 3 Tenez compte de tous les avertissements.
- 4 Respectez toutes les consignes.
- 5 N'utilisez pas cet appareil à proximité d'une source d'eau.
- 6 Nettoyez l'appareil avec un chiffon sec uniquement.
- 7 N'obstruez pas les orifices de ventilation. Installez l'appareil conformément aux consignes du fabricant.
- 8 N'installez pas l'appareil à proximité de sources de chaleur telles que des radiateurs, registres de chaleur, poêles ou autres appareils (amplificateurs par exemple) produisant de la chaleur.
- 9 Utilisez uniquement les pièces de fixation/accessoires spécifiés par le fabricant.

- 10 Confiez toutes les tâches de maintenance à un personnel qualifié. Des travaux de maintenance sont nécessaires en cas d'endommagement de l'appareil : par exemple, endommagement du cordon d'alimentation ou de la fiche, déversement de liquide ou chute d'objets à l'intérieur de l'appareil, exposition de l'appareil à la pluie ou à l'humidité, dysfonctionnement ou chute de l'appareil.

- 11 Votre appareil ne doit pas être exposé aux fuites goutte à goutte ou aux éclaboussures.

- 12 Ne placez pas d'objets susceptibles d'endommager votre appareil à proximité de celui-ci (par exemple, objets remplis de liquide ou bougies allumées).

Avertissement

- Ne retirez jamais le boîtier de l'appareil.
- Ne graissez jamais aucun composant de cet appareil.
- Ne posez jamais l'appareil sur un autre équipement électrique.

Avertissement

Toute modification apportée à cet appareil qui ne serait pas approuvée expressément par Philips Consumer Lifestyle peut invalider l'habilitation de l'utilisateur à utiliser l'appareil.

Remarque pour les États-Unis et le Canada

Cet appareil est conforme à la section 15 de la réglementation FCC et à la norme RSS du Canada. L'exploitation est autorisée aux deux conditions suivantes :

- 1 cet appareil ne doit pas provoquer d'interférences nuisibles ;
- 2 cet appareil doit être capable de supporter différentes interférences, y compris les interférences susceptibles de provoquer un dysfonctionnement.

À l'issue des tests dont il a fait l'objet, cet équipement a été déclaré conforme à la section 15 de la réglementation FCC et à la norme ICES-003 du Canada, applicables aux appareils numériques de classe B. Ces limites sont conçues pour fournir une protection suffisante contre les interférences nuisibles dans les installations résidentielles. Cet équipement génère, utilise et peut émettre des ondes radioélectriques. Il est susceptible de créer des interférences nuisibles dans les communications radioélectriques s'il n'est pas installé ou utilisé conformément au mode d'emploi.

Cependant, l'absence d'interférences dans une installation particulière n'est pas garantie. Dans le cas où cet équipement créerait des interférences avec la réception radio ou télévisée, ce qui peut être vérifié en éteignant et en rallumant l'appareil, il est conseillé d'essayer de corriger ces interférences en appliquant une ou plusieurs des mesures suivantes :

- déplacer l'antenne de réception ;
- augmenter la distance entre l'équipement et le récepteur ;
- raccorder l'équipement à une prise de courant située sur un circuit différent de celui sur lequel le récepteur est connecté ;
- prendre conseil auprès d'un distributeur ou d'un technicien radio/TV qualifié.

Déclaration relative à l'exposition au rayonnement RF : cet appareil est conforme aux limites d'exposition au rayonnement RF stipulées par la FCC et l'IC pour une utilisation dans un environnement non contrôlé. Les antennes utilisées pour cet émetteur doivent être installées et doivent fonctionner à au moins 20 cm de distance des installations et ne doivent pas être placées près d'autres antennes ou émetteurs ou fonctionner avec ceux-ci. Les installateurs doivent s'assurer qu'une distance de 20 cm sépare l'appareil (à l'exception du combiné) des utilisateurs.

Mise au rebut de votre ancien produit

Cet appareil a été conçu et fabriqué avec des matériaux et des composants de haute qualité pouvant être recyclés et réutilisés.

Ne jetez pas ce produit avec les ordures ménagères ordinaires. Renseignez-vous sur les réglementations locales concernant la collecte des produits électriques et électroniques et des piles. La mise au rebut citoyenne de ces produits permet de protéger l'environnement et la santé.

Votre produit contient des piles qui ne doivent pas être jetées avec les ordures ménagères. Renseignez-vous sur les réglementations locales concernant la collecte des piles. La mise au rebut citoyenne des piles permet de protéger l'environnement et la santé.

Visitez www.recycle.philips.com pour plus d'informations sur les centres de recyclage dans votre région.

Confiez toujours votre produit à un professionnel pour retirer la batterie intégrée.

Informations sur l'environnement

Tout emballage superflu a été supprimé. Nous avons fait notre possible pour permettre une séparation facile de l'emballage en trois matériaux : carton (boîte), polystyrène moussé (qui amortit les chocs) et polyéthylène (sacs, feuille protectrice en mousse).

Votre appareil se compose de matériaux recyclables et réutilisables à condition d'être démontés par une entreprise spécialisée. Respectez les réglementations locales pour vous débarrasser des emballages, des piles

3 Prise en main

Les instructions fournies dans ce chapitre doivent être suivies dans l'ordre énoncé.

Si vous contactez Philips, vous devrez fournir les numéros de modèle et de série de cet appareil. Les numéros de série et de modèle sont indiqués sous l'appareil. Notez ces numéros ici :

N° de modèle _____

N° de série _____

Alimentation

Le haut-parleur fonctionne avec la batterie rechargeable intégrée.

Pour charger la batterie intégrée :

Connectez la prise micro USB () au PC à l'aide du câble USB fourni.

- Le voyant d'alimentation () s'allume en blanc.

- Le voyant d'alimentation s'éteint lorsque la batterie est entièrement chargée.

Le crochet

Le mousqueton () est utilisé pour porter ou pendre l'appareil aisément. Il n'est pas destiné à l'escalade ni comme protection en cas de chute.

4 Lecture

Lecture à partir d'un périphérique Bluetooth

Remarque
<ul style="list-style-type: none">La portée efficace entre le haut-parleur et votre périphérique Bluetooth correspond à 10 mètres environ.

<ol style="list-style-type: none">Faites glisser () vers ▶ pour sélectionner la source audio Bluetooth. <ul style="list-style-type: none">Le voyant Bluetooth () clignote en bleu. Activez la fonction Bluetooth sur votre périphérique Bluetooth. Sélectionnez « PHILIPS SBT30 » sur votre périphérique Bluetooth pour le couplage. <ul style="list-style-type: none">Le haut-parleur émet deux signaux sonores et le voyant Bluetooth () reste allumé en bleu. Sur certains périphériques, vous devez peut-être saisir « 0000 » comme mot de passe de couplage. Lancez la lecture de la musique sur votre périphérique Bluetooth.
Appel entrant :
<ul style="list-style-type: none">Appuyez sur le bouton Bluetooth () pour prendre l'appel. Appuyez à nouveau sur le bouton Bluetooth () pour raccrocher.

Conseil
<ul style="list-style-type: none">Vous pouvez parler dans le micro () pour obtenir les meilleures performances du téléphone à haut-parleur.

Lecture à partir d'un appareil externe

- Faites glisser () vers **AUX** pour sélectionner la source audio Aux-in.
 - Le voyant d'alimentation () s'allume en blanc.
- Connectez votre haut-parleur à un appareil externe au moyen du câble USB fourni.
- Lancez la lecture de la musique sur votre appareil.

5 Informations sur le produit

Remarque
<ul style="list-style-type: none">Les informations sur le produit sont sujettes à modifications sans notification préalable.

Caractéristiques techniques	
	
Amplificateur	
Puissance de sortie nominale	2 W RMS
Rapport signal/bruit	> 70 dB
Aux-in Link	600 mV RMS, 10 kOhm
	
Bluetooth	
Spécification Bluetooth	V2.1+EDR
Profils pris en charge	HFPV1.6,AD2Pv1.2,HSPv1.2
Fonctionnalités avancées	Suppression de l'écho et du bruit
Portée	10 m (alignée)
	
Informations générales	
Entrée CC	USB 5 V, 500 mA ;
Batterie Li-polymère intégrée	3,7 V 500 mA·H
Autonomie de la batterie	>8 heures
Dimensions - unité principale (diamètre x hauteur)	D68 mm * H81 mm
Poids - unité principale	0,14 kg

6 Dépannage

Avertissement
<ul style="list-style-type: none">Ne retirez jamais le boîtier de l'appareil.

Pour que votre garantie reste valide, n'essayez jamais de réparer le système vous-même. En cas de problème lors de l'utilisation de cet appareil, vérifiez les points suivants avant de faire appel au service d'assistance. Si aucune solution à votre problème n'a été trouvée, visitez le site Web Philips (www.philips.com/welcome). Lorsque vous contactez Philips, placez votre appareil à portée de main et gardez le numéro de modèle et le numéro de série de l'appareil à disposition.
Pas d'alimentation
<ul style="list-style-type: none">Rechargez votre haut-parleur.
Absence de son
<ul style="list-style-type: none">Réglez le volume sur votre téléphone portable ou PC/Mac. Assurez-vous que votre téléphone portable Bluetooth se trouve dans la portée efficace. Vérifiez que vous avez sélectionné la source audio appropriée.
Aucune réponse de l'enceinte
<ul style="list-style-type: none">Redémarrez l'enceinte.

Register online at www.philips.com/welcome today to get the very most from your purchase.

Registering your model with PHILIPS makes you eligible for all of the valuable benefits listed below,so don't miss out.

Register online at www.philips.com/welcome to ensure:

*Product Safety Notification	*Additional Benefits
By registering your product, you'll receive notification - directly from the manufacturer.	Registering your product guarantees that you'll receive all of the privileges to which you're entitled, including special money-saving offers.

PHILIPS
<i>Congratulations on your purchase, and welcome to the "family!"</i>
Dear PHILIPS product owner:
Thank you for your confidence in PHILIPS.You've selected one of the best-built, best-backed products available today.We'll do everything in our power to keep you happy with your purchase for many years to come.
As a member of the PHILIPS "family," you're entitled to protection by one of the most comprehensive warranties in the industry. What's more, your purchase guarantees you'll receive all the information and special offers for which you qualify, plus easy access to accessories from our convenient home shopping network.
Most importantly, you can count on our uncompromising commitment to your total satisfaction.
All of this is our way of saying welcome - and thanks for investing in a PHILIPS product.

For Customer Use
P.S. To get the most from your PHILIPS purchase, be sure to register online at:
www.philips.com/welcome

PHILIPS	<i>Visit our World Wide Web Site at http://www.philips.com/welcome</i>
----------------	---

PHILIPS LIMITED WARRANTY ONE (1) YEAR

WARRANTY COVERAGE: PHILIPS warranty obligation is limited to the terms set forth below.
WHO IS COVERED: Philips warrants the product to the original purchaser or the person receiving the product as a gift against defects in materials and workmanship as based on the date of original purchase ("Warranty Period") from an Authorized Dealer. The original sales receipt showing the product name and the purchase date from an authorized retailer is considered such proof.
WHAT IS COVERED: The Philips warranty covers new products if a defect in material or workmanship occurs and a valid claim is received by Philips within the Warranty Period. At its option, Philips will either (1) repair the product at no charge, using new or refurbished replacement parts, or (2) exchange the product with a product that is new or which has been manufactured from new, or serviceable used parts and is at least functionally equivalent or most comparable to the original product in Philips current inventory, or (3) refund the original purchase price of the product. Philips warrants replacement products or parts provided under this warranty against defects in materials and workmanship from the date of the replacement or repair for ninety (90) days or for the remaining portion of the original product's warranty, whichever provides longer coverage for you. When a product or part is exchanged, any replacement item becomes your property and the replaced item becomes Philips' property. When a refund is given, your product becomes as Philips' property. Note: Any product sold and identified as refurbished or renewed carries a ninety (90) day limited warranty.
Replacement product can only be sent if all warranty requirements are met. Failure to follow all requirements can result in delay.
WHAT IS NOT COVERED - EXCLUSIONS AND LIMITATIONS: This Limited Warranty applies only to the new products manufactured by or for Philips that can be identified by the trademark, trade name, or logo applied to it. This Limited Warranty does not apply to any non-Philips hardware product or any software, even if packaged or sold with the product. Non-Philips manufacturers, suppliers, or publishers may provide a separate warranty for their own products packaged with the bundled product.
Philips is not liable for any damage to or loss of any programs, data, or other information stored on any media contained within the product, or any non-Philips product or part not covered by this warranty. Recovery or reinstallation of programs, data or other information is not covered under this Limited Warranty.
This warranty does not apply (a) to damage caused by accident, abuse, misuse, neglect, misapplication, or non-Philips product, (b) to damage caused by service performed by anyone other than Philips or Philips Authorized Service Location, (c) to a product or a part that has been modified without the written permission of

PHILIPS LIMITED WARRANTY ONE (1) YEAR

WARRANTY COVERAGE: PHILIPS warranty obligation is limited to the terms set forth below.
WHO IS COVERED: Philips warrants the product to the original purchaser or the person receiving the product as a gift against defects in materials and workmanship as based on the date of original purchase ("Warranty Period") from an Authorized Dealer. The original sales receipt showing the product name and the purchase date from an authorized retailer is considered such proof.
WHAT IS COVERED: The Philips warranty covers new products if a defect in material or workmanship occurs and a valid claim is received by Philips within the Warranty Period. At its option, Philips will either (1) repair the product at no charge, using new or refurbished replacement parts, or (2) exchange the product with a product that is new or which has been manufactured from new, or serviceable used parts and is at least functionally equivalent or most comparable to the original product in Philips current inventory, or (3) refund the original purchase price of the product. Philips warrants replacement products or parts provided under this warranty against defects in materials and workmanship from the date of the replacement or repair for ninety (90) days or for the remaining portion of the original product's warranty, whichever provides longer coverage for you. When a product or part is exchanged, any replacement item becomes your property and the replaced item becomes Philips' property. When a refund is given, your product becomes as Philips' property. Note: Any product sold and identified as refurbished or renewed carries a ninety (90) day limited warranty.
Replacement product can only be sent if all warranty requirements are met. Failure to follow all requirements can result in delay.
WHAT IS NOT COVERED - EXCLUSIONS AND LIMITATIONS: This Limited Warranty applies only to the new products manufactured by or for Philips that can be identified by the trademark, trade name, or logo applied to it. This Limited Warranty does not apply to any non-Philips hardware product or any software, even if packaged or sold with the product. Non-Philips manufacturers, suppliers, or publishers may provide a separate warranty for their own products packaged with the bundled product.
Philips is not liable for any damage to or loss of any programs, data, or other information stored on any media contained within the product, or any non-Philips product or part not covered by this warranty. Recovery or reinstallation of programs, data or other information is not covered under this Limited Warranty.
This warranty does not apply (a) to damage caused by accident, abuse, misuse, neglect, misapplication, or non-Philips product, (b) to damage caused by service performed by anyone other than Philips or Philips Authorized Service Location, (c) to a product or a part that has been modified without the written permission of

PHILIPS LIMITED WARRANTY ONE (1) YEAR

WARRANTY COVERAGE: PHILIPS warranty obligation is limited to the terms set forth below.
WHO IS COVERED: Philips warrants the product to the original purchaser or the person receiving the product as a gift against defects in materials and workmanship as based on the date of original purchase ("Warranty Period") from an Authorized Dealer. The original sales receipt showing the product name and the purchase date from an authorized retailer is considered such proof.
WHAT IS COVERED: The Philips warranty covers new products if a defect in material or workmanship occurs and a valid claim is received by Philips within the Warranty Period. At its option, Philips will either (1) repair the product at no charge, using new or refurbished replacement parts, or (2) exchange the product with a product that is new or which has been manufactured from new, or serviceable used parts and is at least functionally equivalent or most comparable to the original product in Philips current inventory, or (3) refund the original purchase price of the product. Philips warrants replacement products or parts provided under this warranty against defects in materials and workmanship from the date of the replacement or repair for ninety (90) days or for the remaining portion of the original product's warranty, whichever provides longer coverage for you. When a product or part is exchanged, any replacement item becomes your property and the replaced item becomes Philips' property. When a refund is given, your product becomes as Philips' property. Note: Any product sold and identified as refurbished or renewed carries a ninety (90) day limited warranty.
Replacement product can only be sent if all warranty requirements are met. Failure to follow all requirements can result in delay.
WHAT IS NOT COVERED - EXCLUSIONS AND LIMITATIONS: This Limited Warranty applies only to the new products manufactured by or for Philips that can be identified by the trademark, trade name, or logo applied to it. This Limited Warranty does not apply to any non-Philips hardware product or any software, even if packaged or sold with the product. Non-Philips manufacturers, suppliers, or publishers may provide a separate warranty for their own products packaged with the bundled product.
Philips is not liable for any damage to or loss of any programs, data, or other information stored on any media contained within the product, or any non-Philips product or part not covered by this warranty. Recovery or reinstallation of programs, data or other information is not covered under this Limited Warranty.
This warranty does not apply (a) to damage caused by accident, abuse, misuse, neglect, misapplication, or non-Philips product, (b) to damage caused by service performed by anyone other than Philips or Philips Authorized Service Location, (c) to a product or a part that has been modified without the written permission of

PHILIPS LIMITED WARRANTY ONE (1) YEAR

WARRANTY COVERAGE: PHILIPS warranty obligation is limited to the terms set forth below.
WHO IS COVERED: Philips warrants the product to the original purchaser or the person receiving the product as a gift against defects in materials and workmanship as based on the date of original purchase ("Warranty Period") from an Authorized Dealer. The original sales receipt showing the product name and the purchase date from an authorized retailer is considered such proof.
WHAT IS COVERED: The Philips warranty covers new products if a defect in material or workmanship occurs and a valid claim is received by Philips within the Warranty Period. At its option, Philips will either (1) repair the product at no charge, using new or refurbished replacement parts, or (2) exchange the product with a product that is new or which has been manufactured from new, or serviceable used parts and is at least functionally equivalent or most comparable to the original product in Philips current inventory, or (3) refund the original purchase price of the product. Philips warrants replacement products or parts provided under this warranty against defects in materials and workmanship from the date of the replacement or repair for ninety (90) days or for the remaining portion of the original product's warranty, whichever provides longer coverage for you. When a product or part is exchanged, any replacement item becomes your property and the replaced item becomes Philips' property. When a refund is given, your product becomes as Philips' property. Note: Any product sold and identified as refurbished or renewed carries a ninety (90) day limited warranty.
Replacement product can only be sent if all warranty requirements are met. Failure to follow all requirements can result in delay.
WHAT IS NOT COVERED - EXCLUSIONS AND LIMITATIONS: This Limited Warranty applies only to the new products manufactured by or for Philips that can be identified by the trademark, trade name, or logo applied to it. This Limited Warranty does not apply to any non-Philips hardware product or any software, even if packaged or sold with the product. Non-Philips manufacturers, suppliers, or publishers may provide a separate warranty for their own products packaged with the bundled product.
Philips is not liable for any damage to or loss of any programs, data, or other information stored on any media contained within the product, or any non-Philips product or part not covered by this warranty. Recovery or reinstallation of programs, data or other information is not covered under this Limited Warranty.
This warranty does not apply (a) to damage caused by accident, abuse, misuse, neglect, misapplication, or non-Philips product, (b) to damage caused by service performed by anyone other than Philips or Philips Authorized Service Location, (c) to a product or a part that has been modified without the written permission of

PHILIPS LIMITED WARRANTY ONE (1) YEAR

WARRANTY COVERAGE: PHILIPS warranty obligation is limited to the terms set forth below.
WHO IS COVERED: Philips warrants the product to the original purchaser or the person receiving the product as a gift against defects in materials and workmanship as based on the date of original purchase ("Warranty Period") from an Authorized Dealer. The original sales receipt showing the product name and the purchase date from an authorized retailer is considered such proof.
WHAT IS COVERED: The Philips warranty covers new products if a defect in material or workmanship occurs and a valid claim is received by Philips within the Warranty Period. At its option, Philips will either (1) repair the product at no charge, using new or refurbished replacement parts, or (2) exchange the product with a product that is new or which has been manufactured from new, or serviceable used parts and is at least functionally equivalent or most comparable to the original product in Philips current inventory, or (3) refund the original purchase price of the product. Philips warrants replacement products or parts provided under this warranty against defects in materials and workmanship from the date of the replacement or repair for ninety (90) days or for the remaining portion of the original product's warranty, whichever provides longer coverage for you. When a product or part is exchanged, any replacement item becomes your property and the replaced item becomes Philips' property. When a refund is given, your product becomes as Philips' property. Note: Any product sold and identified as refurbished or renewed carries a ninety (90) day limited warranty.
Replacement product can only be sent if all warranty requirements are met. Failure to follow all requirements can result in delay.
WHAT IS NOT COVERED - EXCLUSIONS AND LIMITATIONS: This Limited Warranty applies only to the new products manufactured by or for Philips that can be identified by the trademark, trade name, or logo applied to it. This Limited Warranty does not apply to any non-Philips hardware product or any software, even if packaged or sold with the product. Non-Philips manufacturers, suppliers, or publishers may provide a separate warranty for their own products packaged with the bundled product.
Philips is not liable for any damage to or loss of any programs, data, or other information stored on any media contained within the product, or any non-Philips product or part not covered by this warranty. Recovery or reinstallation of programs, data or other information is not covered under this Limited Warranty.
This warranty does not apply (a) to damage caused by accident, abuse, misuse, neglect, misapplication, or non-Philips product, (b) to damage caused by service performed by anyone other than Philips or Philips Authorized Service Location, (c) to a product or a part that has been modified without the written permission of

PHILIPS LIMITED WARRANTY ONE (1) YEAR

WARRANTY COVERAGE: PHILIPS warranty obligation is limited to the terms set forth below.
WHO IS COVERED: Philips warrants the product to the original purchaser or the person receiving the product as a gift against defects in materials and workmanship as based on the date of original purchase ("Warranty Period") from an Authorized Dealer. The original sales receipt showing the product name and the purchase date from an authorized retailer is considered such proof.
WHAT IS COVERED: The Philips warranty covers new products if a defect in material or workmanship occurs and a valid claim is received by Philips within the Warranty Period. At its option, Philips will either (1) repair the product at no charge, using new or refurbished replacement parts, or (2) exchange the product with a product that is new or which has been manufactured from new, or serviceable used parts and is at least functionally equivalent or most comparable to the original product in Philips current inventory, or (3) refund the original purchase price of the product. Philips warrants replacement products or parts provided under this warranty against defects in materials and workmanship from the date of the replacement or repair for ninety (90) days or for the remaining portion of the original product's warranty, whichever provides longer coverage for you. When a product or part is exchanged, any replacement item becomes your property and the replaced item becomes Philips' property. When a refund is given, your product becomes as Philips' property. Note: Any product sold and identified as refurbished or renewed carries a ninety (90) day limited warranty.
Replacement product can only be sent if all warranty requirements are met. Failure to follow all requirements can result in delay.
WHAT IS NOT COVERED - EXCLUSIONS AND LIMITATIONS: This Limited Warranty applies only to the new products manufactured by or for Philips that can be identified by the trademark, trade name, or logo applied to it. This Limited Warranty does not apply to any non-Philips hardware product or any software, even if packaged or sold with the product. Non-Philips manufacturers, suppliers, or publishers may provide a separate warranty for their own products packaged with the bundled product.
Philips is not liable for any damage to or loss of any programs, data, or other information stored on any media contained within the product, or any non-Philips product or part not covered by this warranty. Recovery or reinstallation of programs, data or other information is not covered under this Limited Warranty.
This warranty does not apply (a) to damage caused by accident, abuse, misuse, neglect, misapplication, or non-Philips product, (b) to damage caused by service performed by anyone other than Philips or Philips Authorized Service Location, (c) to a product or a part that has been modified without the written permission of

PHILIPS LIMITED WARRANTY ONE (1) YEAR

WARRANTY COVERAGE: PHILIPS warranty obligation is limited to the terms set forth below.
WHO IS COVERED: Philips warrants the product to the original purchaser or the person receiving the product as a gift against defects in materials and workmanship as based on the date of original purchase ("Warranty Period") from an Authorized Dealer. The original sales receipt showing the product name and the purchase date from an authorized retailer is considered such proof.
WHAT IS COVERED: The Philips warranty covers new products if a defect in material or workmanship occurs and a valid claim is received by Philips within the Warranty Period. At its option, Philips will either (1) repair the product at no charge, using new or refurbished replacement parts, or (2) exchange the product with a product that is new or which has been manufactured from new, or serviceable used parts and is at least functionally equivalent or most comparable to the original product in Philips current inventory, or (3) refund the original purchase price of the product. Philips warrants replacement products or parts provided under this warranty against defects in materials and workmanship from the date of the replacement or repair for ninety (90) days or for the remaining portion of the original product's warranty, whichever provides longer coverage for you. When a product or part is exchanged, any replacement item becomes your property and the replaced item becomes Philips' property. When a refund is given, your product becomes as Philips' property. Note: Any product sold and identified as refurbished or renewed carries a ninety (90) day limited warranty.
Replacement product can only be sent if all warranty requirements are met. Failure to follow all requirements can result in delay.
WHAT IS NOT COVERED - EXCLUSIONS AND LIMITATIONS: This Limited Warranty applies only to the new products manufactured by or for Philips that can be identified by the trademark, trade name, or logo applied to it. This Limited Warranty does not apply to any non-Philips hardware product or any software, even if packaged or sold with the product. Non-Philips manufacturers, suppliers, or publishers may provide a separate warranty for their own products packaged with the bundled product.
Philips is not liable for any damage to or loss of any programs, data, or other information stored on any media contained within the product, or any non-Philips product or part not covered by this warranty. Recovery or reinstallation of programs, data or other information is not covered under this Limited Warranty.
This warranty does not apply (a) to damage caused by accident, abuse, misuse, neglect, misapplication, or non-Philips product, (b) to damage caused by service performed by anyone other than Philips or Philips Authorized Service Location, (c) to a product or a part that has been modified without the written permission of

PHILIPS LIMITED WARRANTY ONE (1) YEAR

WARRANTY COVERAGE: PHILIPS warranty obligation is limited to the terms set forth below.
WHO IS COVERED: Philips warrants the product to the original purchaser or the person receiving the product as a gift against defects in materials and workmanship as based on the date of original purchase ("Warranty Period") from an Authorized Dealer. The original sales receipt showing the product name and the purchase date from an authorized retailer is considered such proof.
WHAT IS COVERED: The Philips warranty covers new products if a defect in material or workmanship occurs and a valid claim is received by Philips within the Warranty Period. At its option, Philips will either (1) repair the product at no charge, using new or refurbished replacement parts, or (2) exchange the product with a product that is new or which has been manufactured from new, or serviceable used parts and is at least functionally equivalent or most comparable to the original product in Philips current inventory, or (3) refund the original purchase price of the product. Philips warrants replacement products or parts provided under this warranty against defects in materials and workmanship from the date of the replacement or repair for ninety (90) days or for the remaining portion of the original product's warranty, whichever provides longer coverage for you. When a product or part is exchanged, any replacement item becomes your property and the replaced item becomes Philips' property. When a refund is given, your product becomes as Philips' property. Note: Any product sold and identified as refurbished or renewed carries a ninety (90) day limited warranty.
Replacement product can only be sent if all warranty requirements are met. Failure to follow all requirements can result in delay.
WHAT IS NOT COVERED - EXCLUSIONS AND LIMITATIONS: This Limited Warranty applies only to the new products manufactured by or for Philips that can be identified by the trademark, trade name, or logo applied to it. This Limited Warranty does not apply to any non-Philips hardware product or any software, even if packaged or sold with the product. Non-Philips manufacturers, suppliers, or publishers may provide a separate warranty for their own products packaged with the bundled product.
Philips is not liable for any damage to or loss of any programs, data, or other information stored on any media contained within the product, or any non-Philips product or part not covered by this warranty. Recovery or reinstallation of programs, data or other information is not covered under this Limited Warranty.
This warranty does not apply (a) to damage caused by accident, abuse, misuse, neglect, misapplication, or non-Philips product, (b) to damage caused by service performed by anyone other than Philips or Philips Authorized Service Location, (c) to a product or a part that has been modified without the written permission of

PHILIPS LIMITED WARRANTY ONE (1) YEAR

WARRANTY COVERAGE: PHILIPS warranty obligation is limited to the terms set forth below.
WHO IS COVERED: Philips warrants the product to the original purchaser or the person receiving the product as a gift against defects in materials and workmanship as based on the date of original purchase ("Warranty Period") from an Authorized Dealer. The original sales receipt showing the product name and the purchase date from an authorized retailer is considered such proof.
WHAT IS COVERED: The Philips warranty covers new products if a defect in material or workmanship occurs and a valid claim is received by Philips within the Warranty Period. At its option, Philips will either (1) repair the product at no charge, using new or refurbished replacement parts, or (2) exchange the product with a product that is new or which has been manufactured from new, or serviceable used parts and is at least functionally equivalent or most comparable to the original product in Philips current inventory, or (3) refund the original purchase price of the product. Philips warrants replacement products or parts provided under this warranty against defects in materials and workmanship from the date of the replacement or repair for ninety (90) days or for the remaining portion of the original product's warranty, whichever provides longer coverage for you. When a product or part is exchanged, any replacement item becomes your property and the replaced item becomes Philips' property. When a refund is given, your product becomes as Philips' property. Note: Any product sold and identified as refurbished or renewed carries a ninety (90) day limited warranty.
Replacement product can only be sent if all warranty requirements are met. Failure to follow all requirements can result in delay.
WHAT IS NOT COVERED - EXCLUSIONS AND LIMITATIONS: This Limited Warranty applies only to the new products manufactured by or for Philips that can be identified by the trademark, trade name, or logo applied to it. This Limited Warranty does not apply to any non-Philips hardware product or any software, even if packaged or sold with the product. Non-Philips manufacturers, suppliers, or publishers may provide a separate warranty for their own products packaged with the bundled product.
Philips is not liable for any damage to or loss of any programs, data, or other information stored on any media contained within the product, or any non-Philips product or part not covered by this warranty. Recovery or reinstallation of programs, data or other information is not covered under this Limited Warranty.
This warranty does not apply (a) to damage caused by accident, abuse, misuse, neglect, misapplication, or non-Philips product, (b) to damage caused by service performed by anyone other than Philips or Philips Authorized Service Location, (c) to a product or a part that has been modified without the written permission of

PHILIPS LIMITED WARRANTY ONE (1) YEAR

WARRANTY COVERAGE: PHILIPS warranty obligation is limited to the terms set forth below.
WHO IS COVERED: Philips warrants the product to the original purchaser or the person receiving the product as a gift against defects in materials and workmanship as based on the date of original purchase ("Warranty Period") from an Authorized Dealer. The original sales receipt showing the product name and the purchase date from an authorized retailer is considered such proof.
WHAT IS COVERED: The Philips warranty covers new products if a defect in material or workmanship occurs and a valid claim is received by Philips within the Warranty Period. At its option, Philips will either (1) repair the product at no charge, using new or refurbished replacement parts, or (2) exchange the product with a product that is new or which has been manufactured from new, or serviceable used parts and is at least functionally equivalent or most comparable to the original product in Philips current inventory, or (3) refund the original purchase price of the product. Philips warrants replacement products or parts provided under this warranty against defects in materials and workmanship from the date of the replacement or repair for ninety (90) days or for the remaining portion of the original product's warranty, whichever provides longer coverage for you. When a product or part is exchanged, any replacement item becomes your property and the replaced item becomes Philips' property. When a refund is given, your product becomes as Philips' property. Note: Any product sold and identified as refurbished or renewed carries a ninety (90) day limited warranty.
Replacement product can only be sent if all warranty requirements are met. Failure to follow all requirements can result in delay.
WHAT IS NOT COVERED - EXCLUSIONS AND LIMITATIONS: This Limited Warranty applies only to the new products manufactured by or for Philips that can be identified by the trademark, trade name, or logo applied to it. This Limited Warranty does not apply to any non-Philips hardware product or any software, even if packaged or sold with the product. Non-Philips manufacturers, suppliers, or publishers may provide a separate warranty for their own products packaged with the bundled product.
Philips is not liable for any damage to or loss of any programs, data, or other information stored on any media contained within the product, or any non-Philips product or part not covered by this warranty. Recovery or reinstallation of programs, data or other information is not covered under this Limited Warranty.
This warranty does not apply (a) to damage caused by accident, abuse, misuse, neglect, misapplication, or non-Philips product, (b) to damage caused by service performed by anyone other than Philips or Philips Authorized Service Location, (c) to a product or a part that has been modified without the written permission of

This warranty gives you specific legal rights. You may have other rights which vary from state/province to state/province.

P&F USA, Inc. PO Box 2248, Alpharetta, GA 30023-2248
PHILIPS
P&F USA, Inc. PO Box 2248, Alpharetta, GA 30023-2248

3140 035 51091

Regístrate en línea en www.philips.com/welcome hoy mismo para aprovechar al máximo su compra.

Al registrar su modelo con PHILIPS usted cumplirá con los requisitos para obtener todos los valiosos beneficios que se indican a continuación, ¡no se los pierda! Regístrate en línea en www.philips.com/welcome para asegurarse de:

*Seguridad del producto Notificación	*Beneficios adicionales
Al registrar su producto,recibirá la notificación (directamente del fabricante).	Registrar su producto garantiza que recibirá todos los privilegios a los cuales tiene derecho,incluyendo las ofertas especiales para ahorrar dinero.

*Seguridad del producto Notificación	*Beneficios adicionales
Al registrar su producto,recibirá la notificación (directamente del fabricante).	Registrar su producto garantiza que recibirá todos los privilegios a los cuales tiene derecho,incluyendo las ofertas especiales para ahorrar dinero.

PHILIPS
<i>¡Felicitaciones por su compra y bienvenido a la "familia"!</i>
Estimado propietario de un producto PHILIPS:
Gracias por su confianza en PHILIPS.Usted ha escogido uno de los productos mejor contruidos y con mejor respaldo disponible hoy en día.Haremos todo lo que esté a nuestro alcance por mantenerle satisfecho con su compra durante muchos años.
Como miembro de la "familia" PHILIPS, usted tiene derecho a estar protegido con una de las garantías más completas de la industria.Lo que es más: su compra le garantiza que recibirá toda la información y ofertas especiales a las que tiene derecho, además de un fácil acceso a los accesorios desde nuestra cómoda red de compra desde el hogar.
Y lo que es más importante:usted puede confiar en nuestro irrestricto compromiso con su satisfacción total.
Todo esto es nuestra manera de decirle bienvenido y gracias por invertir en un producto PHILIPS.

Para Customer Use
PS.:Para aprovechar al máximo su compra PHILIPS, asegúrese de registrarse en línea en
www.philips.com/welcome

PHILIPS	<i>Visite nuestro sitio en el World Wide Web en http://www.philips.com/welcome</i>
----------------	---

PHILIPS LIMITED WARRANTY ONE (1) YEAR

PHILIPS LIMITED WARRANTY ONE (1) YEAR

WARRANTY COVERAGE: PHILIPS warranty obligation is limited to the terms set forth below.
WHO IS COVERED: Philips warrants the product to the original purchaser or the person receiving the product as a gift against defects in materials and workmanship as based on the date of original purchase ("Warranty Period")