

Register your product and get support at
www.philips.com/welcome

EN Thank you for choosing Philips.
Need help fast?
 Read your Quick Start Guide and/or the manual for your Philips product. If you have read your instructions and still need assistance, go to the website or call our customer support team.
www.philips.com/welcome
 or call:
 1-888-PHILIPS (744-5477) while with your product.
 (and Model / Serial number)

FR Merci pour votre choix Philips.
Besoin d'une aide rapide?
 Le Guide rapide et/ou le Manuel de l'utilisateur peuvent évaluer d'autres détails à propos de votre produit Philips. Si vous avez lu vos instructions et que vous avez toujours besoin d'aide, allez sur le site Internet ou appelez notre service client.
www.philips.com/welcome
 ou appelez:
 1-888-PHILIPS (744-5477) (anglais) pendant que vous êtes avec votre produit.
 (et modèle / numéro de série)

ES Gracias por elegir Philips.
Necesita ayuda inmediata?
 Lea el Manual de Guía rápida del usuario o el Manual del usuario, en donde encontrará consejos de uso de su producto Philips. Si después de leerlos aún necesita ayuda, consulte nuestra oficina de atención al cliente en línea en www.philips.com/welcome o llame al teléfono:
 1-888-PHILIPS (744-5477) y tenga a mano el producto, (y número de modelo / serial)



Quick start guide

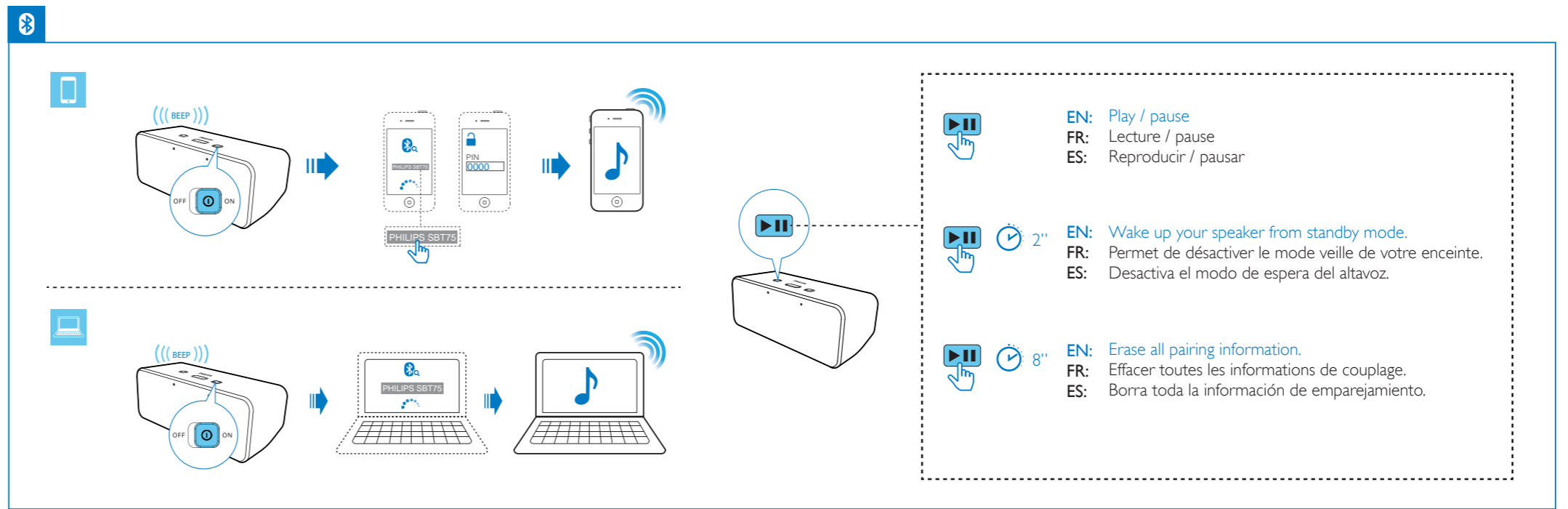
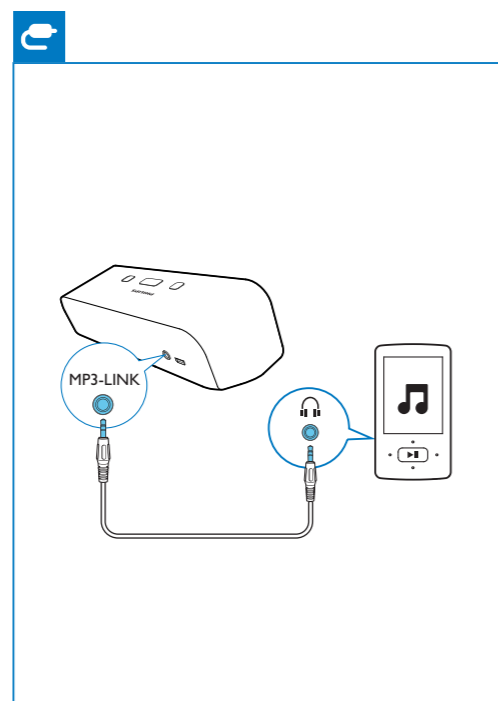
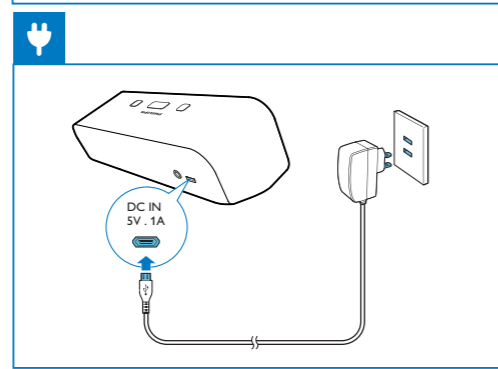
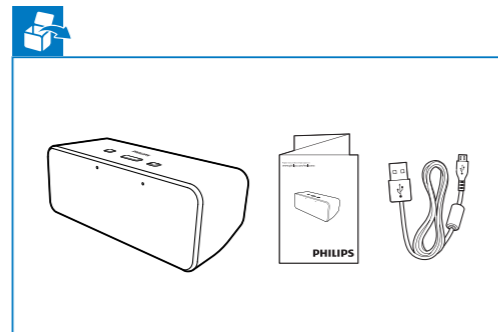
SBT75/37

PHILIPS

Philips Consumer Lifestyle
 A division of Philips Electronics North America Corporation
 P.O. Box 10313
 Stamford, CT 06904
 Phone: 1-888-PHILIPS (744-5477)

Meet Philips at the Internet
<http://www.philips.com/welcome>

PHILIPS All registered and unregistered trademarks are property of their respective owners.
 © 2012 Koninklijke Philips Electronics N.V.
 All rights reserved.
 SBT75_37_QSG_V1.0



- EN:** Play / pause
FR: Lecture / pause
ES: Reproducir / pausar
- EN:** Wake up your speaker from standby mode.
FR: Permet de désactiver le mode veille de votre enceinte.
ES: Desactiva el modo de espera del altavoz.
- EN:** Erase all pairing information.
FR: Effacer toutes les informations de couplage.
ES: Borra toda la información de emparejamiento.

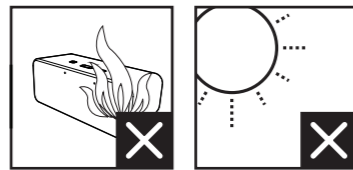
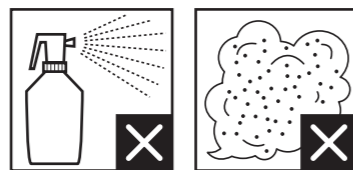
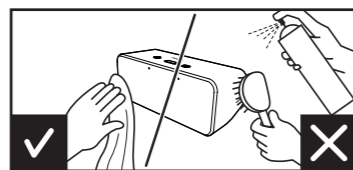
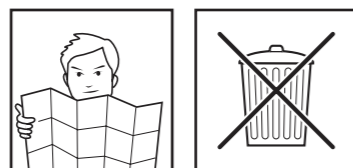
EN Before using your product, read all accompanying safety information.
ES Antes de usar el producto, lee toda la información adjunta a la de seguridad.
FR Veuillez lire toutes les consignes de sécurité fournies avec votre produit avant de l'utiliser.

English Specifications

Amplifier	
Rated Output Power	2X2 W RMS
Signal to Noise Ratio	>67 dBA
MP3-Link	600 mV RMS 20 kohm
General information	
DC power input	Input: 5V 1 A
Operation Power Consumption	3W
Standby Power consumption	<0.5w
Dimensions - Main Unit (W x H x D)	184 x 62 x 63mm
Weight - Main Unit	0.388 kg

Español Accesorios

Amplificador	
Potencia de salida nominal	2X 2 W RMS
Relación señal/ruido	> 67 dB
MP3-Link	600 mV RMS 20 kohms
Información general	
Entrada de alimentación de CC	Entrada: 5 V 1 A
Consumo en funcionamiento	3 W
Consumo de energía en modo de espera	<0,5 W
Dimensiones - Unidad principal (ancho x alto x profundo)	184 x 62 x 63 mm
Peso: unidad principal	0,388 kg



Française Spécifications

Amplificateur	
Puissance de sortie nominale	2X 2 W RMS
Rapport signal / bruit	> 67 dB
MP3-Link	600 mV RMS 20 kOhm
Informations générales	
Entrée CC	Entrée : 5 V 1 A
Consommation électrique en mode de fonctionnement	3 W
Consommation électrique en mode veille	<0,5 W
Dimensions - Unité principale (l x H x P)	184 x 62 x 63 mm
Poids - Unité principale	0,388 kg

EN Congratulations on your purchase and welcome to Philips!

To fully benefit from the support that Philips offers, register your product at www.philips.com/welcome.

Safety

Know these safety symbols



This 'bolt of lightning' indicates uninsulated material within your unit may cause an electrical shock. For the safety of everyone in your household, please do not remove product covering. The 'exclamation point' calls attention to features for which you should read the enclosed literature closely to prevent operating and maintenance problems.
WARNING: To reduce the risk of fire or electric shock, this apparatus should not be exposed to rain or moisture and objects filled with liquids, such as vases, should not be placed on this apparatus.
CAUTION: To prevent electric shock, match wide blade of plug to wide slot, fully insert.

Important Safety Instructions

- Read these instructions.
- Keep these instructions.
- Heed all warnings.
- Follow all instructions.
- Do not use this apparatus near water.
- Clean only with dry cloth.
- Do not block any ventilation openings. Install in accordance with the manufacturer's instructions.
- Do not install near any heat sources such as radiators, heat registers, stoves, or other apparatus (including amplifiers) that produce heat.
- Only use attachments/accessories specified by the manufacturer.
- Refer all servicing to qualified service personnel. Servicing is required when the apparatus has been damaged in any way, such as power-supply cord or plug is damaged, liquid has been spilled or objects have fallen into the apparatus, the apparatus

- has been exposed to rain or moisture, does not operate normally, or has been dropped.
- Battery usage CAUTION – To prevent battery leakage which may result in bodily injury, property damage, or damage to the unit:**
 - Install all batteries correctly, + and - as marked on the unit.
 - Do not mix batteries (old and new or carbon and alkaline, etc.).
 - Remove batteries when the unit is not used for a long time.
 - Batteries (battery pack or batteries installed) shall not be exposed to excessive heat such as sunshine, fire or the like.
 - Apparatus shall not be exposed to dripping or splashing.**
 - Do not place any sources of danger on the apparatus (e.g. liquid filled objects, lighted candles).**

Warning

- Never remove the casing of this apparatus.
- Never lubricate any part of this apparatus.
- Never place this apparatus on other electrical equipment.

Notice

Any changes or modifications made to this device that are not expressly approved by Philips Consumer Lifestyle may void the user's authority to operate the equipment. This device complies with Part 15 of the FCC Rules. Operation is subject to the following two conditions:
 1 this device may not cause harmful interference, and
 2 this device must accept any interference received, including interference that may cause undesired operation.
Notice for the USA
 This equipment has been tested and found to comply with the limits for a Class B digital device, pursuant to part 15 of the FCC Rules. These limits are designed to provide reasonable protection against harmful interference in a residential installation. This equipment generates, uses, and can radiate radio frequency energy and, if not installed and used in accordance with the instruction manual, may cause harmful interference to radio communications. However, there is no guarantee that interference will not occur in a particular installation. If this equipment does cause harmful interference to radio or television reception, which can be determined by turning the equipment off and on, the user is encouraged to try to correct the interference by one or more of the following measures:
 • Relocate the receiving antenna.
 • Increase the separation between equipment and receiver.
 • Connect the equipment into an outlet on a circuit different from that to which the receiver is connected.
 • Consult the dealer or an experienced radio/TV technician for help.

Disposal of your old product

Your product is designed and manufactured with high quality materials and components, which can be recycled and reused. Never dispose of your product with other household waste. Please inform yourself about the local rules on the separate collection of electrical and electronic products and batteries. The correct disposal

of these products helps prevent potentially negative consequences on the environment and human health. Your product contains batteries, which cannot be disposed of with normal household waste. Please inform yourself about the local rules on separate collection of batteries. The correct disposal of batteries helps prevent potentially negative consequences on the environment and human health. Please visit www.recycle.philips.com for additional information on a recycling center in your area.

Environmental information

All unnecessary packaging has been omitted. We have tried to make the packaging easy to separate into three materials: cardboard (box), polystyrene foam (buffer) and polyethylene (bags, protective foam sheet.) Your system consists of materials which can be recycled and reused if disassembled by a specialized company. Please observe the local regulations regarding the disposal of packaging materials, exhausted



The making of unauthorized copies of copy-protected material, including computer programs, files, broadcasts and sound recordings, may be an infringement of copyrights and constitute a criminal offence. This equipment should not be used for such purposes.

Note

- The type plate is located on the bottom of the apparatus.

ES Seguridad

Seguridad

Atención a estos símbolos de seguridad



El símbolo del rayo indica que los componentes sin aislamiento dentro de la unidad pueden generar una descarga eléctrica. Para la seguridad de todas las personas de su hogar, no quite la cubierta del producto. El signo de exclamación indica características importantes cuya información debe leer en los manuales adjuntos a fin de evitar problemas en el funcionamiento y en el mantenimiento.

ADVERTENCIA: Para reducir el riesgo de incendio o descarga eléctrica, el aparato no debe exponerse a la lluvia ni a la humedad ni se deben colocar sobre éste objetos que contengan líquidos. **ATENCIÓN:** Para evitar riesgos de descarga eléctrica, el ancho de los conectores planos debe coincidir con el ancho de la ranura de conexión y el enchufe debe insertarse por completo.

Instrucciones de seguridad importantes

- Lea estas instrucciones.
- Guarde estas instrucciones.
- Preste atención a todas las advertencias.
- siga todas las instrucciones.
- No use este aparato cerca del agua.
- Utilice únicamente un paño seco para la limpieza.
- No bloquee las aberturas de ventilación. Realice la instalación de acuerdo con las indicaciones del fabricante.
- No instale cerca ninguna fuente de calor como, por ejemplo, radiadores, rejillas de calefacción, hornos u otros aparatos que produzcan calor (incluidos los amplificadores).
- Use exclusivamente los dispositivos/accesorios indicados por el fabricante.
- El servicio técnico debe realizarlo siempre personal cualificado. Se requerirá servicio de asistencia técnica cuando el aparato sufra algún tipo de daño como, por ejemplo, que el cable de alimentación o el enchufe estén dañados, que se haya derramado líquido o hayan caído objetos dentro del aparato, que éste se haya expuesto a la lluvia o humedad, que no funcione normalmente o que se haya caído.
- ATENCIÓN con el uso de las pilas.** Para evitar fugas de las pilas que puedan causar lesiones corporales, daños en la propiedad o a la unidad:
 - Instale todas las pilas correctamente, siguiendo las indicaciones de los polos + y - de la unidad.
 - No mezcle pilas (antiguas y nuevas, o de carbón y alcalinas, etc.).
 - Quite las pilas cuando no use la unidad durante un periodo largo de tiempo.
 - No exponga las pilas (batería o pilas instaladas) a temperaturas altas como, por ejemplo, la luz del sol, el fuego o similares.
- No exponga el aparato a goteos ni salpicaduras.
- No coloque sobre el aparato objetos que puedan suponer un peligro (por ejemplo, objetos que contengan líquido o velas encendidas).

Advertencia

- No quite nunca la carcasa de este aparato.
- No lubrique ninguna pieza de este aparato.
- No coloque nunca este aparato sobre otro equipo eléctrico.

Aviso

Cualquier cambio o modificación que se realice en este dispositivo que no esté aprobada expresamente por Philips Consumer Lifestyle puede anular la autoridad del usuario para utilizar el equipo.

