


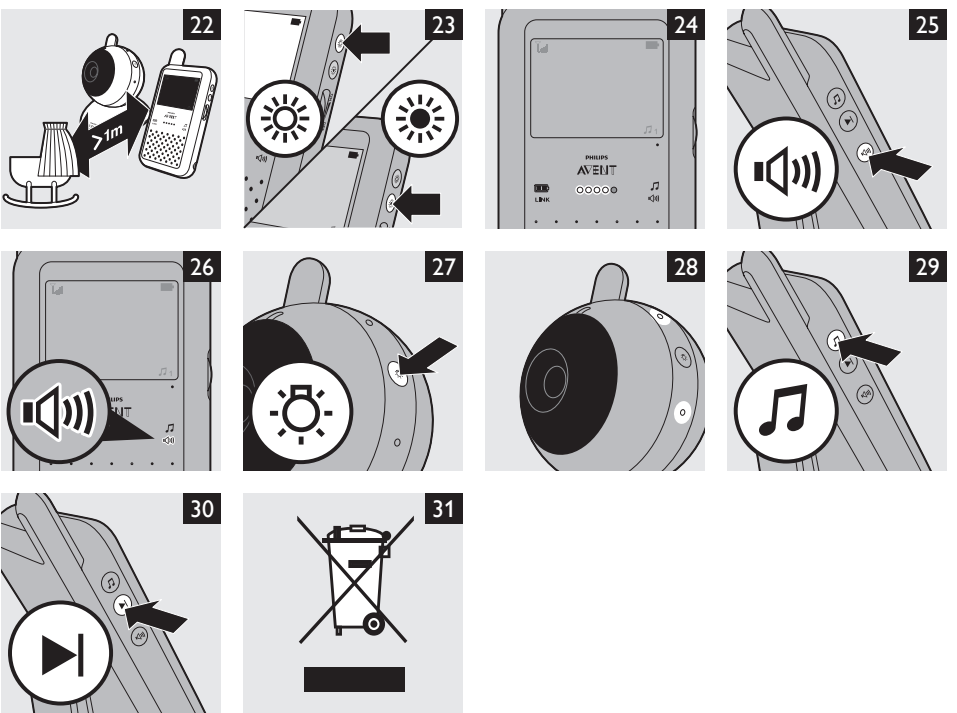
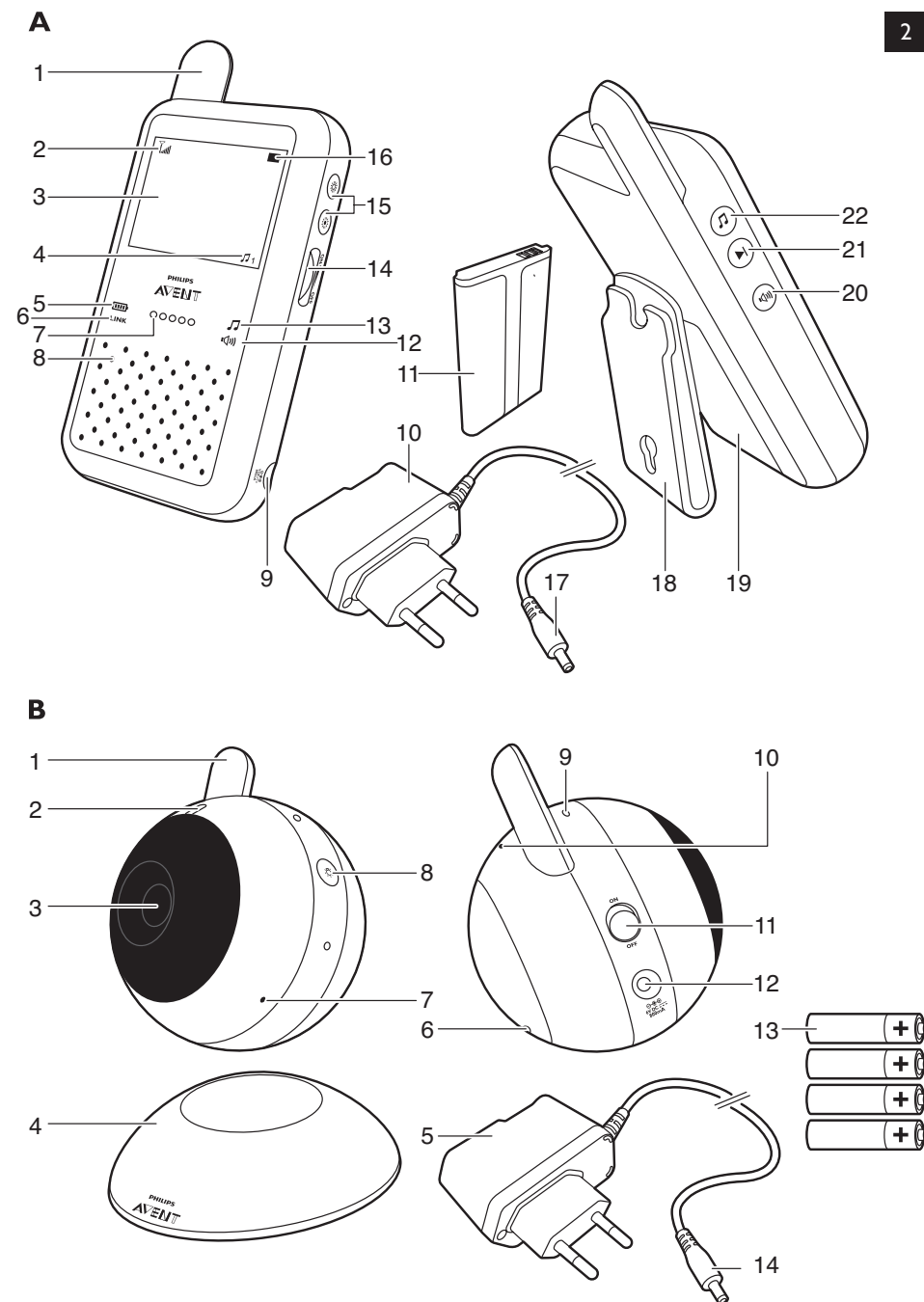
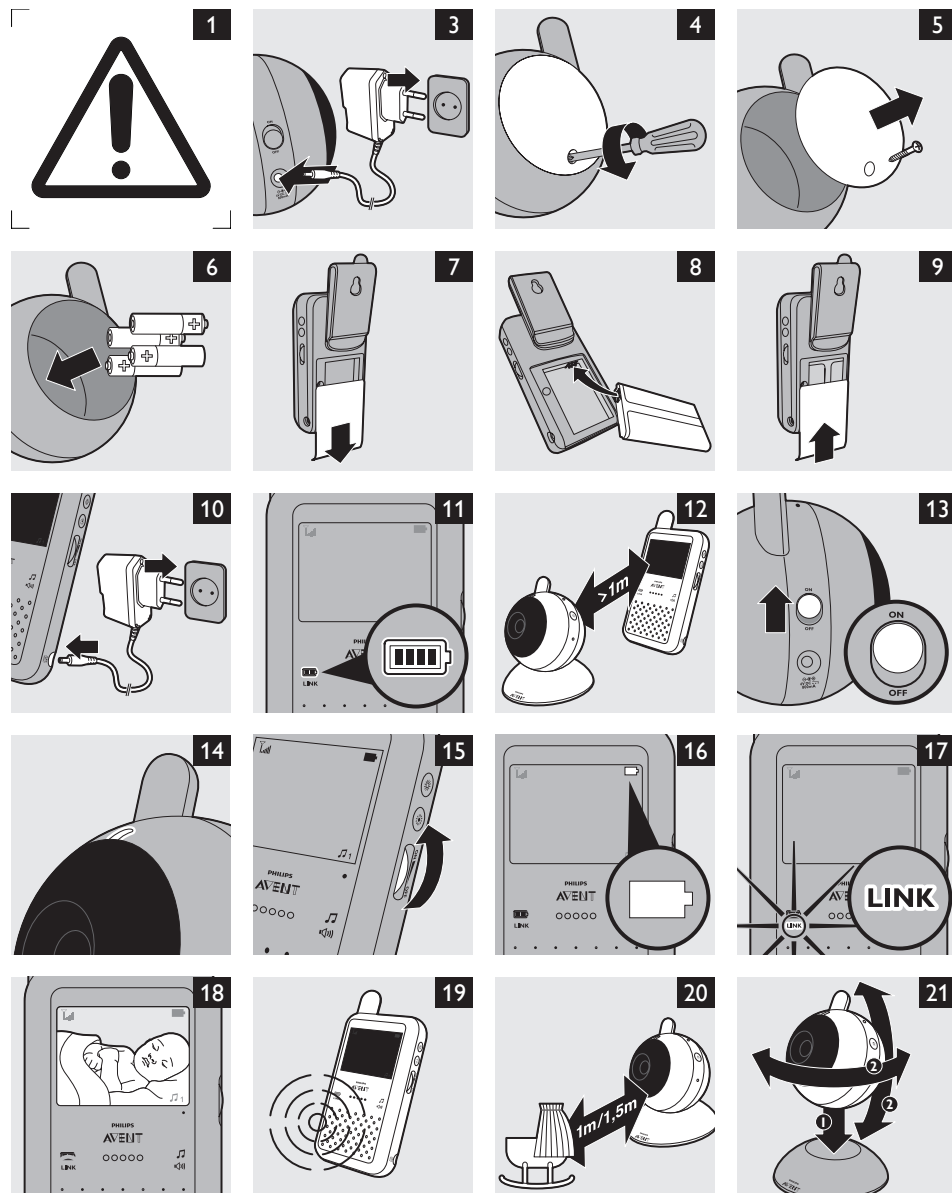


www.philips.com

 100% recycled paper
100% papier recyclé
0000.0000.00.00

PHILIPS





SCD600

ENGLISH 8

IMPORTANT SAFETY INSTRUCTIONS

Some of the following information may not apply to your particular product; however, when using baby monitor equipment, basic safety precautions should always be followed to reduce the risk of fire, electric shock and injury to persons, including the following:

- 1 Read these instructions.
- 2 Keep these instructions.
- 3 Heed all warnings.
- 4 Follow all instructions.
- 5 Do not use this apparatus near water.
- 6 Clean only with dry cloth.
- 7 Do not block any ventilation openings. Install in accordance with the manufacturer's instructions.
- 8 Do not install near any heat sources such as radiators, heat registers, stoves or other apparatus (including amplifiers) that produce heat.
- 9 Do not defeat the safety purpose of the polarized or grounding-type plug. A polarized plug has two blades with one wider than the other. A grounding-type plug has two blades and a third grounding prong. The wide blade or the third prong is provided for your safety. If the provided plug does not fit into your outlet, consult an electrician for replacement of the obsolete outlet.
- 10 Protect the power cord from being walked on or pinched particularly at plugs, convenience receptacles, and the point where they exit from the apparatus.
- 11 Only use attachments/accessories specified by the manufacturer.
- 12 Unplug this appliance during lightning storms or when unused for long periods of time.
- 13 Servicing is required when the apparatus has been damaged in any way, such as power-supply cord or plug is damaged, liquid has been spilled or objects have fallen into the apparatus, the apparatus has been exposed to rain or moisture, does not operate normally, or has been dropped. For assistance visit our website www.philips.com/AVENT or call 1-800-54-AVENT (1-800-542-8368).
- 14 This baby monitor is intended as an aid. It is not a substitute for responsible and proper adult supervision and should not be used as such.
- 15 Use this appliance only for its intended use as described in this manual.
- 16 Unplug this product from the wall outlet before cleaning. Do not use liquid cleaners or aerosol cleaners.
- 17 Products should not be used while you are in a bathtub, shower or pool. Immersion of the product in water could cause an electrical shock.
- 18 This product should be operated only from the type of power source indicated on the type plate of the adapters (A10, B5). If you are not sure of the type of power supply to your home, consult your dealer or local power company.
- 19 Do not overload wall outlets and extension cords as this can result in the risk of fire or electric shock.
- 20 Never push objects of any kind into this product through casing slots as they may touch dangerous voltage points or short out parts that could result in a risk of fire or electric shock. Never spill liquid of any kind on the product.
- 21 To reduce the risk of electric shock, do not disassemble this product, but visit our website www.philips.com/AVENT or call 1-800-54-AVENT (1-800-542-8368) for assistance. Opening or removing covers (except battery compartment lids) may expose you to dangerous voltage or other risks. Incorrect reassembly can cause electric shock when the appliance is subsequently used.
- 22 To prevent strangulation with power cord, never place monitor within reach of child. Do not use with extension cords.

If your product utilizes batteries, the following additional precautions should be observed:

- 1 Use only the type and size of batteries specified in the user manual.

- 2 Do not dispose of batteries in fire. They may explode. Dispose of batteries according to the instructions.
- 3 Exercise care in handling batteries in order not to short out the batteries with conducting materials such as rings, bracelets and keys. Overcharging, short circuiting, reverse charging, mutilation, or incineration of batteries must be avoided to prevent one or more of the following occurrences: release of toxic materials, release of hydrogen and/or oxygen gas, rise in surface temperature.
- 4 Do not attempt to recharge batteries provided with or identified for use with this product that are not intended to be charged. The batteries may leak corrosive electrolyte or explode.
- 5 Do not attempt to rejuvenate the batteries provided with or identified for use with this product by heating them. Sudden release of battery electrolyte may occur, causing burns or irritation to eyes or skin.
- 6 If and when necessary, the batteries must be replaced with identical new ones from the same manufacturer. If a battery to be replaced is connected with other batteries in series, it is recommended that the other batteries be replaced with new ones at the same time.
- 7 Reverse polarity installation of the batteries in the end product must be avoided. Reverse insertion of batteries can cause charging, and that may result in leakage or explosion.
- 8 Remove batteries from this product if you store the product over 30 days because the batteries could leak and damage the product.
- 9 Discard 'dead' batteries as soon as possible since 'dead' batteries are more likely to leak in a product. If a battery has leaked or vented, it should be replaced immediately using protective gloves.
- 10 Do not store batteries in high-temperature areas. Batteries that are stored in a freezer or refrigerator for the purpose of extending shelf life should be protected from condensation during storage and defrosting. Batteries should be stabilized at room temperature prior to use after cold storage.
- 11 If your product uses rechargeable batteries, charge the batteries only in accordance with the instructions and limitations specified in the user manual.
- 12 There is a risk of explosion if batteries are replaced with an incorrect type. For the **parent unit**, always use the SCD600 Li-Ion **rechargeable** battery pack as supplied with the appliance.

SAVE THESE INSTRUCTIONS

- **CAUTION: THE SYMBOL SHOWN IN FIGURE 1 MEANS THAT THERE IS A RISK OF EXPLOSION OF THE BATTERIES AND/OR OF SERIOUS DAMAGE TO THE BABY MONITOR IF THE BATTERIES OR THE ADAPTER ARE REPLACED WITH AN INCORRECT TYPE.** (Fig. 1)

Adapter for baby unit:

- Input: 100-240 VAC 50/60Hz
- Output: 6.0VDC 0.8A
- Adapter no. OH-1048A0600800U1

Adapter for parent unit:

- Input: 100-240 VAC 50/60Hz
- Output: 6.0VDC 0.8A
- Adapter no. OH-1048A0600800U1

The electrical outlet shall be installed near the equipment and shall be easily accessible.

For the baby unit, only use 1.5V AAA alkaline batteries (batteries not supplied).

For the parent unit, only use the SCD600 Li-Ion rechargeable battery as supplied with the appliance. Dispose of used batteries according to the instructions.

Compliance information

The FCC ID number is located on the casing bottom of the parent unit and in the battery compartment of the baby unit.

The term 'IC' before the certification number signifies that Industry Canada technical specifications were met. This certification means that the equipment meets certain radio communications and operational requirements. This device complies with Part 15 of the FCC Rules and ICES-003 of Industry Canada. Operation is subject to the following two conditions: (1) this device may not cause harmful interference, and (2) this device must accept any interference received, including interference that may cause undesired operation. This device complies also with RSS-213 of Industry Canada.

Radio interference

This equipment has been tested and found to comply with the limits for a Class B digital device, pursuant to Part 15 of the FCC Rules and applicable Industry Canada specifications. These limits are designed to provide reasonable protection against harmful interference in a residential installation. This equipment generates, uses and can radiate radio frequency energy and, if not installed and used in accordance with the instructions, may cause harmful interference to radio communications. However, there is no guarantee that interference will not occur in a particular installation. If this equipment does cause harmful interference to radio or television reception, which can be determined by turning the equipment off and on, the user is encouraged to try to correct the interference by one or more of the following measures:

- Reorient or relocate the receiving antenna.
- Increase the separation between the equipment and receiver.
- Connect the equipment to an outlet on a circuit different from that to which the receiver is connected.

RF Radiation Exposure Statement

This equipment complies with FCC RF radiation exposure limits set forth for an uncontrolled environment. This equipment should be installed and operated with a minimum distance of 7 3/4 inches / 20 centimeters between the radiator and your body. For handheld operation, this equipment has been tested and meets the FCC RF exposure guidelines. For body-worn operation, this product has been tested and meets the FCC RF exposure guideline when used with the belt clip supplied with this product. This transmitter must not be co-located or operating in conjunction with any other antenna or transmitter. This equipment also complies with Industry Canada RSS-102 with respect to Canada's Health Code 6 for Exposure of Humans to RF Fields.

Do not attempt to repair or modify this equipment

Any repairs or alterations made by the user to the equipment may void the warranty and compliance of the equipment. For assistance visit our website www.philips.com/AVENT or call 1-800-54-AVENT (1-800-542-8368).

Introduction

Congratulations on your purchase and welcome to Philips AVENT! To fully benefit from the support that Philips AVENT offers, register your product at www.philips.com/welcome. The Philips AVENT video monitor provides you with round-the-clock support and it allows you to see your baby day and night from anywhere in the house. The latest digital technology guarantees crystal-clear sound and the clearest image of your baby. This gives you an additional sense of security without entering your baby's room and disturbing their sleep.

General description (Fig. 2)

A Parent unit

- 1 Antenna
- 2 Signal strength symbol
- 3 Video display
- 4 Lullaby symbol
- 5 Battery/power-on light

- 6 LINK light
 - 7 Sound level lights
 - 8 Loudspeaker
 - 9 Socket for appliance plug
 - 10 Adapter
 - 11 Rechargeable battery
 - 12 Automatic screen activation light
 - 13 Lullaby light
 - 14 Volume wheel with power-off position
 - 15 Brightness adjustment buttons
 - 16 Battery symbol
 - 17 Small plug
 - 18 Belt clip/stand
 - 19 Battery compartment lid
 - 20 Automatic screen activation button
 - 21 'Next lullaby' button
 - 22 Lullaby play/stop button
- ### B Baby unit
- 1 Antenna
 - 2 Power-on light
 - 3 Lens
 - 4 Stand
 - 5 Adapter
 - 6 Battery compartment lid
 - 7 Microphone
 - 8 Nightlight button
 - 9 Nightlights
 - 10 Loudspeaker
 - 11 On/off switch
 - 12 Socket for appliance plug
 - 13 Non-rechargeable batteries (not included)
 - 14 Small plug

Important

Read this user manual carefully before you use the appliance and save it for future reference.

- Check if the voltage indicated on the adapters of the baby unit and the parent unit corresponds to the local mains voltage before you connect the appliance.
- Only use the adapters supplied to connect the baby unit and the parent unit to the electrical outlet.
- The adapters contain a transformer. Do not cut off the adapters to replace them with other plugs, as this causes a hazardous situation.
- If the adapters are damaged, always have them replaced with one of the original type in order to avoid a hazard. For the correct type, see chapter 'Replacement'.
- Never use the baby monitor in moist places or close to water.
- Children should be supervised to ensure that they do not play with the appliance.
- Use and store the appliance at a temperature between 50°F (10°C) and 95°F (35°C).
- Do not expose the baby unit and parent unit to extreme cold or heat or to direct sunlight. Do not put the baby unit and the parent unit close to a heating source.
- Make sure the baby unit and the cord are always out of reach of the baby (at least 1 metre/3 feet away).
- Never place the baby unit inside or mount it on the baby's bed or playpen.
- Never cover the parent unit and the baby unit with anything (e.g. a towel or blanket).

- The operating range of the baby monitor is 150 metres/490 feet in open air. Depending on the surroundings and other disturbing factors, this range may be smaller.
- If you have any combination of cordless phones, wireless video, Wi-Fi networks, microwave or Bluetooth on 2.4Ghz, connection problems may occur. The connection between the parent unit and the baby unit could be lost for some seconds or may cause interference with other devices.
- We advise you to use the parent unit corded to save energy. The baby video monitor consumes more energy than a standard baby monitor (without video).
- This baby monitor is intended as an aid. It is not a substitute for responsible and proper adult supervision and should not be used as such.
- This monitor is not intended to be used as a medical monitor and its use should not replace adult supervision.

Preparing for use

Baby unit

You can use the baby unit corded or on non-rechargeable batteries. Even if you are going to use the unit corded, we advise you to insert non-rechargeable batteries. This guarantees automatic back-up in case of power failure.

Corded operation

- 1 Put the appliance plug in the baby unit and put the adapter in a wall outlet (Fig. 3).

Operation on non-rechargeable batteries

The baby unit runs on four 1.5V R6 AAA batteries (not included). We recommend you use Philips R06 PowerLife batteries or an equivalent type.

Do not use rechargeable batteries, as the baby unit does not have a charging function.

Unplug the baby unit and make sure your hands and the unit are dry when you insert non-rechargeable batteries.

- 1 Remove the screw in the battery compartment lid with a flathead screwdriver (Fig. 4).
- 2 Remove the battery compartment lid. (Fig. 5)
- 3 Insert four non-rechargeable batteries (Fig. 6).

Note: Make sure the + and - poles of the batteries point in the right direction.

- 4 Reattach the lid.
- 5 Fasten the screw with a flathead screwdriver.

Parent unit

Battery operation (rechargeable battery)

Unplug the parent unit and make sure your hands and the unit are dry when you insert the rechargeable battery.

The parent unit comes with a rechargeable Li-ion 1050mAh battery.

Charge the parent unit before you use it for the first time or when the parent unit indicates that the battery is low (when the empty battery symbol flashes on the video display and the battery light on the parent unit flashes green).

Note: If the battery is completely empty, the parent unit automatically switches off and loses contact with the baby unit.

- 1 Slide down the battery compartment lid to remove it (Fig. 7).
- 2 Insert the rechargeable battery (Fig. 8).

Note: Make sure the + and - poles of the battery point in the right direction.

- 3 Reattach the lid (Fig. 9).
- 4 Insert the appliance plug into parent unit and put the adapter in a wall outlet (Fig. 10).
 - ▶ The battery light on the parent unit lights up blue and the video display shows a battery symbol (Fig. 11).
 - ▶ When the battery is fully charged, the battery light turns green.
- When you charge the parent unit for the first time or after a long period of non-use, switch it off and let it charge continuously for at least 4 hours.
- Charging normally takes 3.5 hours, but it takes longer when the parent unit is switched on during charging. To keep the charging time as short as possible, switch off the parent unit during charging.
- When the batteries are fully charged, the parent unit can be used cordlessly for at least 8 hours if it is in automatic screen activation mode. If the video is on continuously, the parent unit can be used cordlessly for approx. 6 hours.

Note: When the parent unit has been charged for the first time, the operating time is less than 6 hours. The rechargeable battery only reaches its full capacity after you have charged and discharged it four times.

Note: The battery gradually discharges, even when the parent unit is switched off.

Using the appliance

Use the video monitor for its intended household use as described in this manual.

- 1 Place the parent unit and the baby unit in the same room to test the connection (Fig. 12). Make sure the baby unit is at least 1 metre/3 feet away from the parent unit.
- 2 Set the ON/OFF switch on the baby unit to the ON position. (Fig. 13)
 - ▶ The green power-on light goes on. (Fig. 14)

Note: The power-on light always lights up green, even when there is no connection with the parent unit.

- 3 To switch on the parent unit, turn the volume wheel in the 'ON' direction to the desired volume level. (Fig. 15)
 - ▶ The power-on/battery light goes on. If the parent unit is charging, the power-on/battery light is blue. When the parent unit is fully charged, the power-on/battery light turns green.

Note: The power-on/battery light always goes on, even when there is no connection with the baby unit.

- ▶ The video display goes on and the battery symbol appears on it (Fig. 16).
- ▶ The LINK light flashes red to indicate that the parent unit is searching for a connection with a baby unit. (Fig. 17)
- ▶ The LINK light on the parent unit turns green and lights up continuously when a connection has been established between the baby unit and parent unit. The baby is shown on the video display. (Fig. 18)

Note: If no connection can be established, the LINK light on the parent unit flashes red, the parent unit beeps and 'OUT OF RANGE' appears on the display. (Fig. 19)

Positioning the baby monitor

Keep the baby unit out of the reach of the baby. Never place the baby unit inside or mount it on the baby's bed or playpen.

Note: If you use a Wi-Fi network, microwave oven or a DECT-system and you experience interference on either the parent unit or baby unit, move the parent unit further away until there is no more interference.

1 Place the baby unit at least 1 metre/3 feet away from your baby, but no further than 1.5 metres/5 feet away (Fig. 20).

2 Place the stand of the baby unit on a stable, level and horizontal surface.

Tip: Position the baby unit at a higher level to get a good overview of the baby's bed or playpen.

3 Place the baby unit on the stand and adjust its position in a way that ensures the best visibility of your baby (Fig. 21).

Do not position the baby unit with the microphone facing downwards. When the microphone is blocked by the base, the baby unit does not pick up sounds properly.

4 Place the parent unit within the operating range of the baby unit. Make sure it is at least 1 metre/3 feet away from the baby unit to avoid acoustic feedback (Fig. 22).

For more information on the operating range, see section 'Operating range' below.

Operating range

The operating range of the baby monitor is 150 metres/490 feet in open air. Depending on the surroundings and other disturbing factors, this range may be smaller:

Dry materials	Material thickness	Loss of range
Wood, plaster; cardboard, glass (without metal, wires or lead)	< 30cm/12in	0-10%
Brick, plywood	< 30cm/12in	5-35%
Reinforced concrete	< 30cm/12in	30-100%
Metal grilles or bars	< 1cm /0.4in	90-100%
Metal or aluminum sheets	< 1cm/0.4in	100%

For wet and moist materials, the range loss may be up to 100%.

Features

Adjusting loudspeaker volume

You can adjust the loudspeaker volume of the parent unit to the level you prefer.

1 Turn the volume wheel up or down to adjust the volume. (Fig. 15)

Note: If the volume is set to a high level, the parent unit consumes more power.

Adjusting display brightness

You can adjust the display brightness of the parent unit to the level you prefer.

1 Press the brightness adjustment buttons on the parent unit to adjust the brightness of the video display. (Fig. 23)

Note: If the brightness is set to a high level, the parent unit consumes more power.

Sound level lights

The parent unit continuously monitors the sound level in your baby's room and the sound level lights let you know if there is any activity. If your baby cries, the green sound level lights light up on the parent unit.

- As long as the baby unit does not detect a sound, all sound level lights on the parent unit are out.

- When the baby unit picks up a sound, one or more sound level lights on the parent unit go on. The number of lights that go on is related to the loudness of the sound picked up by the baby unit. The sound level lights also go on when the parent unit is set to a low volume or when the automatic screen activation mode is activated (see section 'Automatic screen activation' below) (Fig. 24).

Automatic screen activation

The parent unit continuously monitors the sound level in your baby's room. When the automatic screen activation mode is activated, the video display only switches on when the baby unit picks up a sound. As long as no sound is detected, the video display is off to save power.

- 1** To activate the automatic screen activation mode, press the automatic screen activation button on the parent unit. (Fig. 25)
 - The automatic screen activation light on the parent unit goes on (Fig. 26).
 - When the baby unit detects a sound, the video display on the parent unit automatically goes on to show the baby. When no sound is detected for 30 seconds, the video display goes out again.
- 2** To switch off the automatic screen activation mode, press the automatic screen activation button on the parent unit again.

Nightlights

1 Press the nightlight button on the baby unit to switch on the nightlights. (Fig. 27)

- The nightlights on the baby unit go on. (Fig. 28)

2 Press the nightlight button again to switch off the nightlights.

Tip: Switch off the nightlights when you operate the baby unit on non-rechargeable batteries. This saves power.

Lullaby function

Note: When the baby unit plays a lullaby, it consumes more power.

- 1** Press the play/stop button to start the lullaby (Fig. 29).
 - The lullaby starts to play on the baby unit and repeats continuously.
- 2** To stop the lullaby, press the play/stop button on the parent unit again.
- 3** To select another lullaby when a lullaby is playing:
 - Press the 'next lullaby' button on the parent unit. (Fig. 30)
 - If you want a different lullaby, press the 'next lullaby' button on the parent unit again.

Out-of-range alert

When the parent unit is out of range of the baby unit, the parent unit beeps once and the message 'Out of range' appears on the video display. The LINK light on the parent unit flashes red.

Note: The message 'Out of range' also appears on the video display of the parent unit when the baby unit is switched off.

Night vision

The camera has infrared lights that allow you to see your baby clearly, even in a dark room. When the lens detects low light levels, the infrared lights are activated automatically. Place the baby unit 1 to 1.5 metres/3 to 5 feet away from the baby to ensure a clear view.

Belt clip/stand

If the rechargeable battery of the parent unit is sufficiently charged, you can take the unit with you inside and outside the house by attaching the unit to your belt or waistband with the belt clip. This allows you to monitor your baby while you are moving around.

Cleaning and maintenance

Do not immerse the parent unit and the baby unit in water and do not clean them under the tap.

Do not use cleaning spray or liquid cleaners.

1 Switch off the baby unit and the parent unit and unplug them from the power outlet.

2 Clean the parent unit and the baby unit with a damp cloth.

Note: Fingerprints or dirt on the lens of the baby unit may affect the camera's performance. Avoid touching the lens with your fingers.

Make sure the baby unit and parent unit are dry before you connect them to the power outlet again.

3 Clean the adapters with a dry cloth.

Storage

- When you are not going to use the baby monitor for some time, remove the non-rechargeable batteries from the baby unit and the rechargeable battery from the parent unit. Store the parent unit, the baby unit and the adapters in a cool and dry place.
- Do not wrap cords around the monitors when storing. Store cords in a safe location where they will not be cut or damaged.

Replacement

Baby unit

Batteries

Only replace the non-rechargeable batteries of the baby unit with four 1.5V R6 AAA batteries.

Note: We recommend you to use Philips non-rechargeable batteries or an equivalent type.

Adapter

Only replace the adapter of the baby unit with an adapter of the original type. For assistance visit our website www.philips.com/AVENT or call 1-800-54-AVENT (1-800-542-8368).

Parent unit

Batteries

Only replace the SCD600 Li-Ion battery pack of the parent unit with a pack of the original type. For assistance visit our website www.philips.com/AVENT or call 1-800-54-AVENT (1-800-542-8368).

Adapter

Only replace the adapter of the parent unit charger with an adapter of the original type. For assistance visit our website www.philips.com/AVENT or call 1-800-54-AVENT (1-800-542-8368).

Assistance

For assistance call 1-800-54-AVENT (1-800-542-8368) or visit our website: www.philips.com/AVENT.

Assistance

For assistance visit our website www.philips.com/AVENT or call 1-800-54-AVENT (1-800-542-8368).

Environment

- Dispose of batteries properly. Do not incinerate. Batteries may explode if overheated. Do not wrap in metal or aluminum foil. Wrap in newspaper before discarding (Fig. 31).

Warranty

FULL TWO YEAR WARRANTY

Philips Electronics North America Corporation (USA) and Philips Electronics Ltd (CANADA) warrant each new Philips AVENT product, model SCD600, against defects in materials or workmanship for a period of two years from the date of purchase, and agrees to repair or replace any defective product without charge. IMPORTANT: This warranty does not cover damage resulting from accident, misuse or abuse, lack of reasonable care, or the affixing of any attachment not provided with the product. NO RESPONSIBILITY IS ASSUMED FOR ANY SPECIAL, INCIDENTAL OR CONSEQUENTIAL DAMAGES. In order to obtain warranty service, simply call toll-free 1-800-54-AVENT (1-800-542-8368).

Frequently asked questions

This chapter lists the questions most frequently asked about the appliance. If you cannot find the answer to your question, visit our website www.philips.com/AVENT or call 1-800-54-AVENT (1-800-542-8368) for assistance.

Question	Answer
Why don't the power-on light of the baby unit and the parent unit go on when I switch on the units?	Perhaps the rechargeable battery of the parent unit is empty and the parent unit is not connected to the power outlet. Insert the appliance plug into the parent unit and put the adapter in a wall outlet. Then move the volume wheel in the 'ON' direction to switch on the parent unit and to establish connection with the baby unit.
	Perhaps the baby unit is not connected to the power outlet and the non-rechargeable batteries in the baby unit are empty or there are no non-rechargeable batteries in the baby unit at all. Put full non-rechargeable batteries in the baby unit or connect the baby unit to the power outlet. Then set the on/off switch to 'ON' to switch on the baby unit and to establish connection with the parent unit.
Why does the LINK light on the parent unit flash red?	The baby unit and the parent unit are out of range of each other. Move the parent unit closer to the baby unit.
	The baby unit may be switched off. Switch on the baby unit.
Why does the battery/power-on light on the parent unit flash green?	The rechargeable battery of the parent unit is running low. Recharge the battery (see chapter 'Preparing for use').
Why does the parent unit beep?	If the parent unit beeps while the LINK light lights up red continuously, the connection with the baby unit is lost. Move the parent unit closer to the baby unit.
	The baby unit may be switched off. Switch on the baby unit.

Question	Answer
Why does the video monitor produce a high-pitched noise?	The units may be too close to each other. Make sure the parent unit and the baby unit are at least 1 metre/3 feet away from each other. The volume of the parent unit may be set too high. Decrease the volume of the parent unit.
Why don't I hear a sound/Why can't I hear my baby cry?	The volume of the parent unit may be set too low or may be switched off. Turn the volume wheel to a higher volume level. Perhaps you have switched on the automatic screen activation. If the automatic screen activation is activated, the video display only switches on when the baby unit picks up a sound. As long as no sound is detected, the video display is off to save power.
Why does the parent unit react too quickly to other sounds?	The baby unit also picks up other sounds than those of your baby. Move the baby unit closer to the baby (but observe the minimum distance of 1 metre/3 feet).
Why do the non-rechargeable batteries of the baby unit run low quickly?	Perhaps you have switched on the nightlights. If you want to use the nightlights, we advise you to use the baby unit corded. Perhaps you are playing lullabies. The baby unit consumes a lot of energy when you play lullabies. If you play lullabies, we advise you to use the baby unit corded.
Why does the charging time of the parent unit exceed 3.5 hours?	The parent unit may be switched on during charging. Switch off the parent unit during charging.
The specified operating range of the baby monitor is 150 metres/490 feet. Why does my baby monitor manage a much smaller distance than that?	The specified range is only valid outdoors in open air. Inside your house, the operating range is limited by the number and type of walls and/or ceilings between the parent unit and the baby unit.
Why can't I establish a connection? Why is the connection lost every now and then? Why are there sound interruptions?	The baby unit and the parent unit are probably close to the outer limits of the operating range or there is interference from other 2.4GHz wireless devices. Try a different location, decrease the distance between the units or switch off other 2.4GHz wireless devices. Please note that it takes about 5 seconds each time before a connection between the units is established.
What happens during a power failure?	If the parent unit is sufficiently charged, it continues to operate during a power failure. If there are batteries in the baby unit, it also continues to operate during a power failure.

Question	Answer
The operating time of the parent unit is supposed to be at least 6 hours. Why is the operating time of my parent unit shorter?	When the parent unit has been charged for the first time, the operating time is shorter because the battery has not reached its full capacity yet. The rechargeable battery only reaches its full capacity after you have charged and discharged it at least four times. After this, the operating time is 6 hours if the automatic screen activation is not activated and 8 hours if the automatic screen activation mode is activated. The parent unit consumes a lot of energy when the video display is switched on continuously. Activate the automatic screen activation mode to increase the operating time (see chapter 'Features', section 'Automatic screen activation'). The volume of the parent unit may be set too high, which causes the parent unit to consume a lot of energy. Decrease the volume of the parent unit.
Why do I get interference on the parent unit?	Interference may occur when the parent unit is out of range of the baby unit. Interference may also occur if there are too many walls or ceilings between the parent unit and the baby unit or when other 2.4GHz wireless devices are switched on (e.g. microwave, internet). Put the parent unit in a different place, closer to the baby unit, or switch off other wireless devices.
Why does the parent unit make a buzzing sound?	Interference may occur when the parent unit is out of range of the baby unit. Interference may also occur if there are too many walls or ceilings between the parent unit and the baby unit or when other 2.4GHz wireless devices are switched on (e.g. microwave, internet). Put the parent unit in a different place, closer to the baby unit, or switch off other wireless devices. The rechargeable battery of the parent unit may need to be charged.
Why does the video display flicker?	Interference may occur when the parent unit is out of range of the baby unit. Interference may also occur if there are too many walls or ceilings between the parent unit and the baby unit or when other 2.4GHz wireless devices are switched on (e.g. microwave, internet). Put the parent unit in a different place, closer to the baby unit, or switch off other wireless devices. The rechargeable battery of the parent unit may need to be charged.
Why isn't there any image on the video display when the power-on light is on?	The parent unit may be in the automatic screen activation mode. Press the automatic screen activation button again to switch on the video display.
Why isn't the image on the video display clear?	The display brightness may be set too low. Increase the display brightness (see chapter 'Features').
Why doesn't the parent unit work in the automatic screen activation mode?	The distance between the baby and the baby unit may be too large. Make sure that the baby unit is placed 1 to 1.5 metres/3 to 5 feet away from the baby.

Question	Answer
Why isn't the image on the video display clear in night vision?	The distance between the baby and the baby unit may be too large. Make sure that the baby unit is placed 1 to 1.5 metres/3 to 5 feet away from the baby.
Why doesn't the battery symbol appear on the video display of the parent unit when I start to charge the parent unit?	It may take a few minutes before the battery symbol appears on the video display of the parent unit when you charge the parent for the first time or after a long period of non-use.
Why doesn't the parent unit charge when I have plugged it in?	The rechargeable battery may have reached the end of its life. Replace the rechargeable battery.

