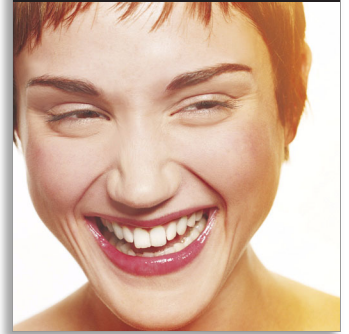


Philips LivingColors
LED lamp

Black

LivingColors



69171/30/PH



Create the light for the moment

Bright sunshine yellow when it's grey outside. A pale leaf-green to relax you. Touch the colour ring and LivingColors lights up your world in any shade you choose, from soothing pastel shades to rich, intense colours.

Choose your ambiance from amongst endless colours

- 16 million colours and any shade of white
- Dimming and adjustable colour intensity
- Adjustable speed of automatic colour changing mode

Experiment with lights to create your own ambiance

- Adjust each light individually or in any combination
- Control this, and other SmartLink lights, with one remote
- Create and store 3 favourite lighting scenes

Change all your lights with just one touch

- Easy to use remote control
- Recall your saved scene with just a touch of a button



asimpleswitch.com

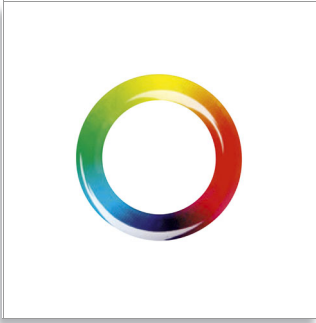
PHILIPS

sense and simplicity

LED lamp
Black

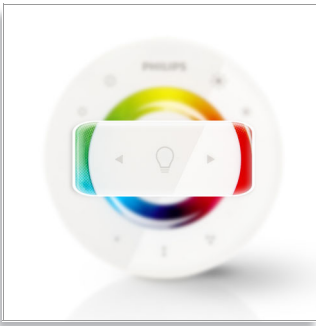
Highlights

16 million colours



Seven state-of-the-art LEDs create millions of colours, including white light.

Adjust one light or all



When connected to other Philips LivingAmbiance products, you can change colour, dim or adjust intensity of coloured light luminaires and dim white light luminaires.

Automatic colour changing mode

To select automatic colour changing, sweep your finger around the colour wheel and press the 'I' button. Adjust the speed of colour changing by selecting a colour – from blue for just 5 seconds to purple for a full hour.

Dimming and colour intensity



Adjust the brightness to suit your mood. Add more white to the colour to get perfect subtle shades.

Easy to use remote control

Simply touch to change colour, dim or adjust colour intensity to get your favourite setting.

One remote for all lights



All of the LivingAmbiance products work together via the same intuitive remote control with which you can dim or change the colour of your lights – individually or together – in any combination you please. You can see which products work together by looking at the box

6917130PH

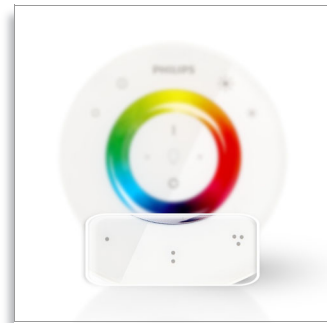
or the product itself. If there is a SmartLink logo, it means the product will work with other SmartLink products.

Recall your scene with a touch



Press one of the three scene buttons to recall your saved lighting settings.

Store 3 lighting scenes



Set each luminaire, or a combination of luminaires, to your preferred setting. Press and hold one of the scene buttons to store it.

LED lamp
Black

6917130PH

Specifications

Power

- Energy consumption: 1 x 15 W
- Battery type: AAA
- Power supply: 220-240 V, 50/60 Hz
- Class of protection: II

Design and finishing

- Colour: Black, Transparent
- Material: Synthetic

Accessories included

- Remote control

Technical specifications

- Light source: 1 x High Power LED
- IP code: IP20
- Price range: mid
- Room: bedroom and living room, kids' room
- Style: modern
- Type: desk/table light

Extra features

- Colour changing
- Colour range: 16 million colours possible
- Dimmable
- Guaranteed: 2 year(s)

Packaging

- Height: 23 cm
- Length: 29 cm
- Width: 24.5 cm
- Gross weight: 2 kg

Product dimensions and weight

- Height: 19 cm
- Length: 21 cm
- Net weight: 1 kg
- Width: 21 cm



Issue date 2011-06-29

Version: 4.0.1

12 NC: 9150 025 54301
EAN: 87 17943 74768 9

© 2011 Koninklijke Philips Electronics N.V.
All Rights reserved.

Specifications are subject to change without notice.
Trademarks are the property of Koninklijke Philips
Electronics N.V. or their respective owners.

www.philips.com