

Always there to help you

Register your product and get support at
www.philips.com/welcome



AJ6000/12



User manual

PHILIPS

Contents

1	Important	3
----------	------------------	----------

2	Your clock radio	3
	What's in the box	3
	Overview of the main unit	4

3	Get started	5
	Connect power	5
	Set time	6
	Turn on	6

4	Listen to FM radio	7
	Tune to FM radio stations	7
	Store FM radio stations manually	7
	Store FM radio stations automatically	7
	Select a preset radio station	7

5	Other features	8
	Set alarm timer	8
	Set sleep timer	9
	Play audio from an external device	9
	Adjust display brightness	9

6	Product information	10
	Specifications	10

7	Troubleshooting	10
----------	------------------------	-----------

8	Notice	11
----------	---------------	-----------

1 Important

Warning

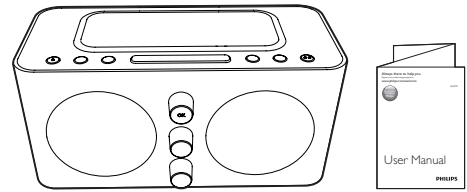
- Never remove the casing of this clock radio.
- Never lubricate any part of this clock radio.
- Never place this clock radio on other electrical equipment.
- Keep this clock radio away from direct sunlight, naked flames or heat.
- Make sure that you always have easy access to the power cord, plug or adaptor to disconnect the clock radio from the power.

- Make sure that there is enough free space around the product for ventilation.
- The clock radio shall not be exposed to dripping or splashing.
- Do not place any sources of danger on the clock radio (e.g. liquid filled objects, lighted candles).
- Where the plug of the Direct Plug-in Adapter is used as the disconnect device, the disconnect device shall remain readily operable.
- Only use power supplies listed in the user manual.
- Battery usage **CAUTION** – To prevent battery leakage which may result in bodily injury, property damage, or damage to the unit:
 - Install all batteries correctly, + and - as marked on the unit.
 - Do not mix batteries (old and new or carbon and alkaline, etc.).
 - Remove batteries when the unit is not used for a long time.
 - The batteries should not be exposed to excessive heat such as sunshine fire or the like.

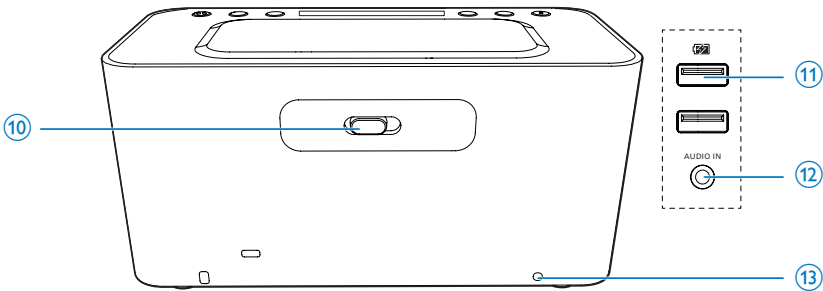
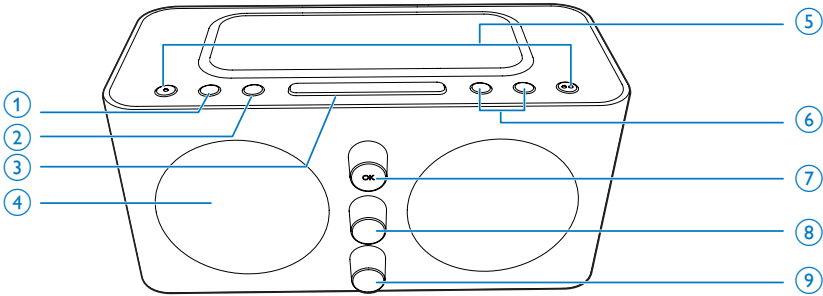
2 Your clock radio

Congratulations on your purchase, and welcome to Philips! To fully benefit from the support that Philips offers, register your product at www.philips.com/welcome.

What's in the box



Overview of the main unit



① SOURCE

- Select a source.(FM/AUDIO IN)
- Press and hold for 3 seconds to switch to standby mode.

② SLEEP

- Set sleep timer.

③ SNOOZE/BRIGHTNESS

- Snooze alarm.
- Adjust display brightness.

④ Display panel

- Show current information.

⑤ AL1/AL2

- View alarm settings.
- Activate or deactivate alarm timer.

⑥ VOLUME +/-

- Adjust volume.

⑦ First Knob (HOUR/PRESET)

- Adjust hour.
- Select a preset radio station.

⑧ Second Knob (MINUTE/TUNING)

- Adjust minute.
- Tune to an FM radio station.
- Skip to the previous or next track.

⑨ Third Knob (SET TIME/SET RADIO/CLOCK/SET AL1/SET AL2)

- Set clock.
- Scan/store FM radio stations.
- Set alarm.

- ⑩ **BUZZ/FM/SOUND 1/SOUND 2**
 - Select an alarm source for Alarm 1 and Alarm 2.
- ⑪ **⚡ (5.0V --- 1 A)**
 - Charge your iPod/iPhone through USB cable (not included).
- ⑫ **AUDIO IN**
 - Connect an external audio device.
- ⑬ **FM ANT**
 - Improve FM reception.

3 Get started

Always follow the instructions in this chapter in sequence.

Connect power

The unit can only be powered by supplied AC power. Batteries are only used for alarm backup if not connected with AC power.

Option 1: AC power



Warning

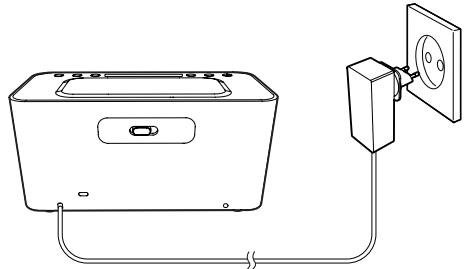
- Risk of product damage! Make sure that the power supply voltage corresponds to the voltage printed on the back or the underside of the unit.
- Risk of electric shock! When you disconnect the AC power, always pull the plug from the socket. Never pull the cord.

Connect the AC power cord to the wall socket.



Tip

- To save energy, turn the unit off after use.



Option 2: Battery power



Caution

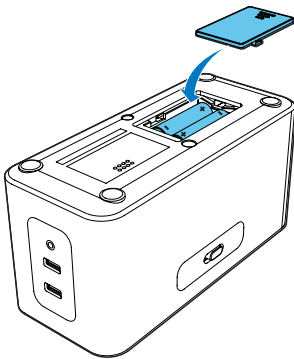
- Batteries contain chemical substances, so they should be disposed of properly.



Note

- Batteries are not supplied with the accessories.
- **bAt** shows on the display when the battery level is low.

- 1 Open the battery compartment.
- 2 Insert 2 batteries (type: 1.5V LR6/AA) with correct polarity (+/-) as indicated.
- 3 Close the battery compartment.



Set time

- 1 Rotate the **Third Knob** to "**SET TIME**" to activate clock setting mode.
↳ Hour and minute digits blinks.
- 2 Rotate the **First Knob** to adjust the hour.
- 3 Rotate the **Second Knob** to adjust the minute.
- 4 Press **OK** on the **First Knob** to confirm.
↳ The setting time is displayed.
- 5 Rotate the **Third Knob** to **CLOCK** after setting.
↳ The hour and minute digits stops blinking.

Turn on

The clock radio turns on automatically once your plugged in.

Switch to standby mode

Press **SOURCE** for 3 seconds to switch to standby mode.

- ↳ The source indicator on the display panel turns off.

4 Listen to FM radio

Tune to FM radio stations

Tip

- Position the antenna as far as possible from TV,VCR, or other radiation source.
- For better reception, fully extend and adjust the position of the antenna.

Note

- Make sure that the **Third Knob** switched to **CLOCK** before setting.

- 1 Press **SOURCE** repeatedly to select FM tuner source.
↳ **FM** on the display panel lights up.
- 2 Rotate and hold the **Second Knob** for two seconds.
↳ The clock radio tunes to a station with strong reception automatically.
- 3 Repeat step 2 to tune in to more radio stations.

To tune to a station manually:

Rotate the **Second Knob** repeatedly until you find optimal reception.

Store FM radio stations manually

- 1 In **FM** mode, rotate the **Third Knob** to "SET RADIO".
↳ **FM** begins to blink.
- 2 Rotate and hold the **Second Knob** for 2 seconds.
↳ The last selected channel show on the display.

- 3 Rotate the **First Knob** again to select the target preset position.
- 4 Press **OK** on the **First Knob** to confirm.
- 5 Repeat steps 2-4 to store other stations.

Note

- To remove a pre-stored station, store another station in its place.

Store FM radio stations automatically

Note

- You can store a maximum of 20 FM radio stations.

- 1 In **FM** mode, rotate the **Third Knob** to "SET RADIO".
↳ **FM** begins to blink.
- 2 Press an hold **OK** on the **First Knob** for 3 seconds.
↳ The clock radio stores all the available FM radio stations, and broadcasts the first available station automatically.

Select a preset radio station

Note

- Make sure that the **Third Knob** switched to **CLOCK** before setting.

- 1 Press **SOURCE** repeatedly to select FM tuner source.
↳ **FM** on the display lights up.
- 2 Rotate the **First Knob** repeatedly to select a preset radio station.

5 Other features

Set alarm timer

In standby mode, you can set two alarms to ring at different time.

Note

- Make sure that you have set the clock correctly.

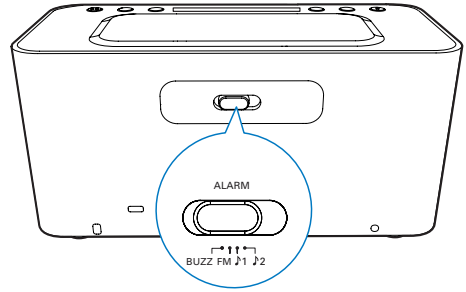
- 1 Rotate the **Third Knob** to **SET AL1** or **SET AL2** to activate alarm setting mode.
↳ The ① / ② and time digits blink.
- 2 Rotate the **First Knob** to adjust the hour.
- 3 Rotate the **Second Knob** to adjust the minute.
- 4 Press **OK** on **First Knob** to confirm.
- 5 Rotate the **Third Knob** to **CLOCK** after setting.

Select alarm source

For alarm sound, you can select buzzer, or your last listened radio channel.

Tip

- If FM is selected as the alarm source and the unit is playing under FM mode, buzzer will sound when alarm time comes.



Activate/deactivate alarm timer

Note

- Make sure that the **Third Knob** switched to **CLOCK** before setting.

- 1 Press **AL1/AL2** to view alarm settings.
↳ The ① / ② lights up.
- 2 Press **AL1/AL2** again to activate or deactivate the alarm timer.
↳ The ① / ② appears if alarm timer is on and disappears if it is off.
 - To stop the ringing alarm, press the corresponding **AL1/AL2**.
↳ The alarm repeats ringing for the next day.

Snooze the alarm

When alarm sounds, press **SNOOZE**.

- ↳ The alarm snoozes and repeats ringing nine minutes later.

Set sleep timer

Note

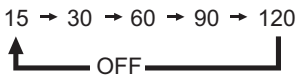
- Make sure that the **Third Knob** switched to **CLOCK** before setting.

This clock radio can switch to standby mode automatically after a preset period.

- Press **SLEEP** repeatedly to select the sleep timer period (in minutes).
 - ↳ When the sleep timer is activated, **zZ** appears.

To deactivate the sleep timer:

- Press **SLEEP** repeatedly until **[OFF]** (off) appears.



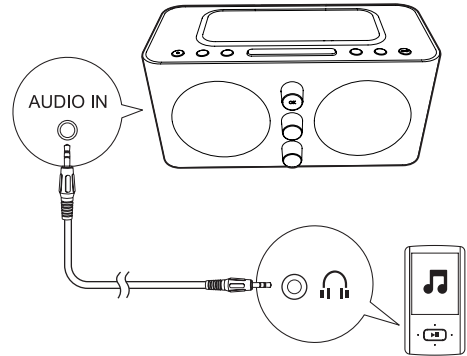
Play audio from an external device

Note

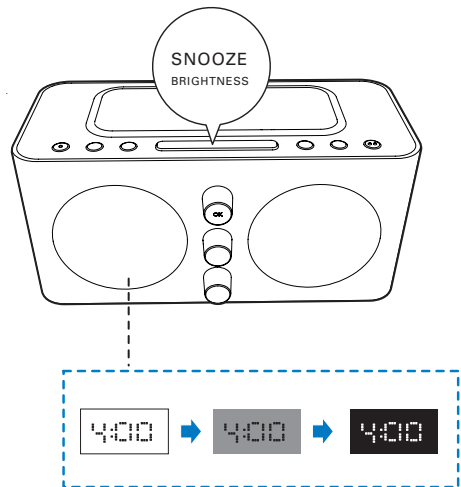
- Make sure that the **Third Knob** switched to **CLOCK** before setting.

You can listen to audio from an external device through this clock radio.

- 1 Connect an audio cable to:
 - the **AUDIO IN** socket on the clock radio.
 - the headphone socket on an external device.
- 2 Press **SOURCE** repeatedly to select the Audio-in source.
 - ↳ The **Ⓜ** on the display panel lights up.
- 3 Play the external device (refer to its user manual).



Adjust display brightness



6 Product information

Note

- Product information is subject to change without prior notice.

Specifications

Amplifier

Rated Output Power 1W RMS

Tuner

Tuning Range	FM: 87.5 - 108 MHz
Sensitivity - Mono, 26dB S/N Ratio	FM: <22 dBf
Search Selectivity	FM: <30 dBf
Total Harmonic Distortion	FM: <3%
Signal to Noise Ratio	FM: >50 dBA

General information

Power supply	Model: ASSA36E-050250;
- AC Power	Input: 100-240 V ~, 50/60Hz, 0.6A; Output: 5.0V = 2500 mA
- Battery	2 x AA batteries
Operation Power Consumption	<15 W
Standby Power Consumption	<1 W
Dimensions - Main Unit (W x H x D)	195 x 99 x 123 mm
Weight - Main Unit	0.65 kg

7 Troubleshooting

Warning

- Never remove the casing of this device.

To keep the warranty valid, never try to repair the system yourself.

If you encounter problems when using this device, check the following points before requesting service. If the problem remains unsolved, go to the Philips Web page (www.philips.com/support). When you contact Philips, make sure that the device is nearby and the model number and serial number are available.

No power

- Ensure that the power cord is connected securely.
- Ensure that there is power at the power supply socket.
- Ensure that the batteries are installed correctly.

No response from the clock radio

- Disconnect and reconnect the AC power plug, then turn on the clock radio again.

Poor radio reception

- Keep the clock radio away from other electronic devices to avoid radio interference.
- Fully extend and adjust the position of the FM antenna.

Alarm does not work

- Set the clock/alarm correctly.

Clock/alarm setting erased

- Power has been interrupted or the power plug has been disconnected.
- Reset the clock/alarm.

8 Notice



This product complies with the radio interference requirements of the European Community.

Any changes or modifications made to this device that are not expressly approved by WOOX Innovations may void the user's authority to operate the equipment.



Your product is designed and manufactured with high quality materials and components, which can be recycled and reused.



When this crossed-out wheeled bin symbol is attached to a product it means that the product is covered by the European Directive 2002/96/EC.

Please inform yourself about the local separate collection system for electrical and electronic products.

Please act according to your local rules and do not dispose of your old products with your normal household waste. Correct disposal of your old product helps to prevent potential negative consequences for the environment and human health.



Your product contains batteries covered by the European Directive 2006/66/EC, which cannot be disposed with normal household waste. Please inform yourself about the local

rules on separate collection of batteries because correct disposal helps to prevent negative consequences for the environmental and human health.

Environmental information

All unnecessary packaging has been omitted. We have tried to make the packaging easy to separate into three materials: cardboard (box), polystyrene foam (buffer) and polyethylene (bags, protective foam sheet.)

Your system consists of materials which can be recycled and reused if disassembled by a specialized company. Please observe the local regulations regarding the disposal of packaging materials, exhausted batteries and old equipment.



Note

- The type plate is located on the bottom of the apparatus.



Specifications are subject to change without notice

2014 © WOOX Innovations Limited.

All rights reserved.

Philips and the Philips' Shield Emblem are registered trademarks of Koninklijke Philips N.V. and are used by WOOX Innovations Limited under license from Koninklijke Philips N.V.

