

**PHILIPS**

**NORELCO**

## Bodygroom 7100

Showerproof body  
groomer, Series 7000

Safe, self-sharpening blades

5 built-in length settings

50mins cordless use/1h charge

3D pivoting head



BG2040/34



## Fast and comfortable, below the neck

### Philips Bodygroom BG2040

A true all-in-one trimmer, the Philips Norelco Bodygroom 7100 is designed with an integrated trimmer on one end and a contour-following shaver head on the other, for a comfortable and convenient trim and shave.

#### **Skin friendly: Best performance that feels great**

- Trim and shave all body zones with optimal comfort
- Hypo-allergenic foil shaver and patented pearl tips
- Rounded tips for smooth contact with your skin

#### **Easy to use: Provides maximum ease of use**

- Ergonomic rubber grip for maximum control
- Water resistant for use in the shower, and easy cleaning

#### **Express yourself: Create the look you want**

- 5 length settings for different body hair lengths
- for a close shave following your body's contours

#### **Convenience: Provides optimal power**

- 50 minutes cordless use after 1 hour quick charge
- Shows the battery status

# Highlights

## Dual ended Design

The Philips Bodygroom BG2040 is a dual ended product for a more convenient experience: trimming head with 5 integrated length settings comb for different hair length options and a shaving head for a close shave.

## Trimmer



Select and lock your desired lengthsetting for convenient and skin friendly trimming of all body zones.

## 3D pivoting head



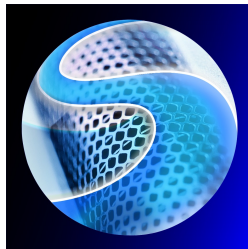
3-Dimensional pivoting head adjusts to every curve of your body for a close and comfortable shave.

## Skin protection shaver



A hypo-allergenic metal shaving foil and patented pearl tip trimmer prevents skin irritation for ultimate body comfort.

## Skin friendly trimmer



Rounded tips gives a smooth touch of your skin, while the sharp cutting edges deliver a high trimmer performance.

## Quick charge

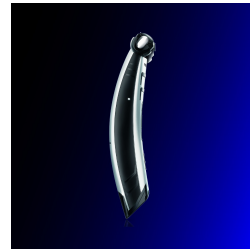


The battery delivers more than 50 minutes of powerful cordless after a 1 hour charge. A 10 min quick charge gives you 10 minutes of grooming time, so it is always ready when you are.

## Battery light

Fully charged battery is indicated by a solid green light, with at least 10 minutes left of usage the light blinks orange.

## Ergonomic grip



Striped rubber grips on each side ensure optimal grip, even when wet, for better control when grooming your body.

## 100% showerproof



Trim and shave in comfort, in or out of the shower, wet or dry. To clean, you can simply rinse this groomer under the tap.

# Specifications

## Cutting system

Cutter width: 32 mm

Number of length settings: 5

Shaving element: Foil with two pre-trimmers

Trimming element: Integrated

## Ease of use

Secured length settings

Charging indicator: 1 LED

Cordless

Integrated trim and shave head: Close shave in one stroke

LED indicator: Charging and battery level

Wet & Dry: Showerproof and easy cleaning

## Power system

Charging time: 1 hour

Running time: 50 minutes

Usage: Cordless only

## Design

Finishing: Chromed body, LED Indicator

All in 1 design: Dual heads, shaver and trimmer

Easy grip: Soft-touch rubber grip

## Accessories

Store and charge stand

## Service

2-year worldwide guarantee

## Create the look you want

Styles: Shave and trim your body

## Attachments

XS trimming comb

## Trimming & shaving performance

3D pivoting head: Body contour following

Shaving system: Shaving foil for close shave

Skin comfort: Skin friendly shaving head

Trimming system: 5 integrated length settings

## FK-PC-Body groomers

Ease of Use: Adjustable length setting, Battery Indicator, Secured length settings, Showerproof

