



1 Your electric pressure cooker

Congratulations on your purchase, and welcome to Philips!
To fully benefit from the support that Philips offers, register your product at www.Philips.com/welcome.

2 Important

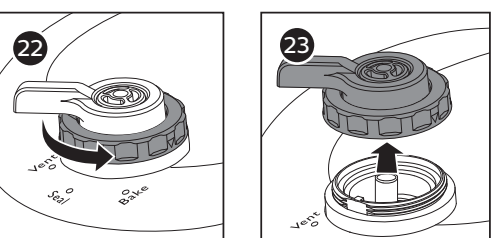
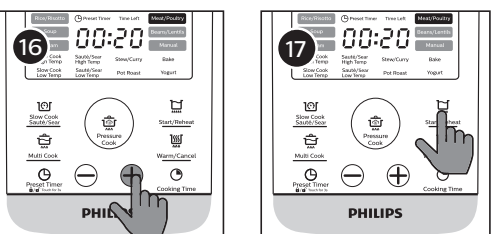
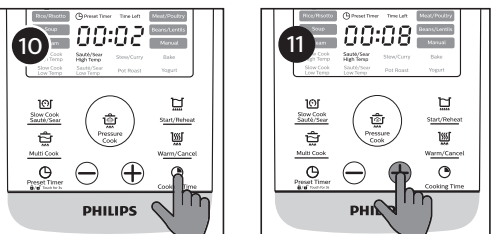
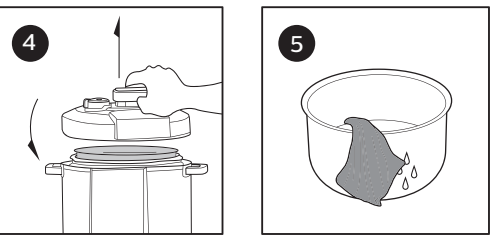
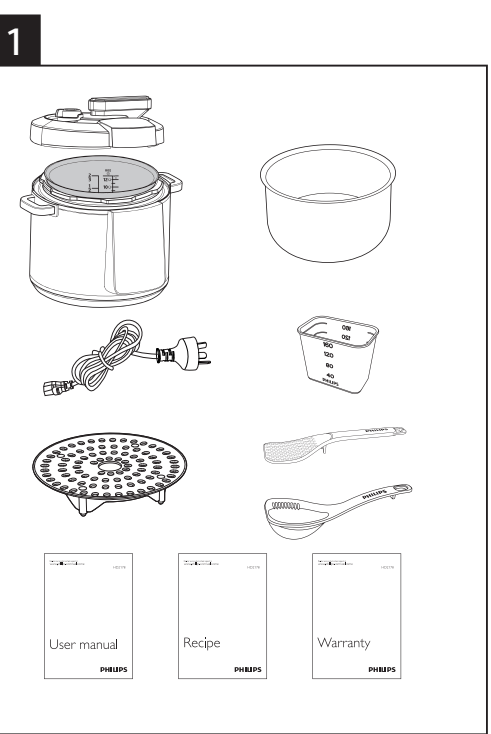
Read this safety leaflet carefully before you use the electric pressure cooker and save it for future reference.

Danger

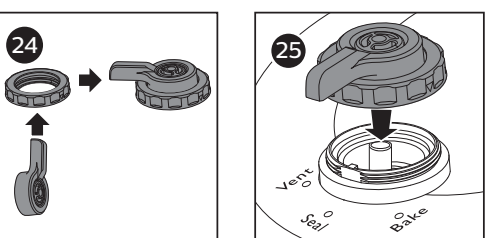
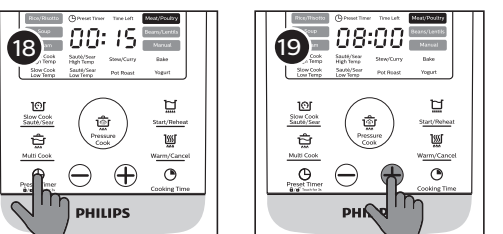
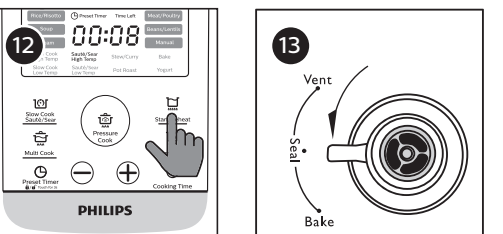
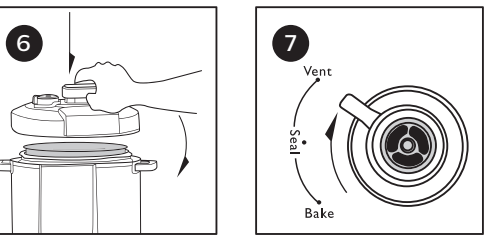
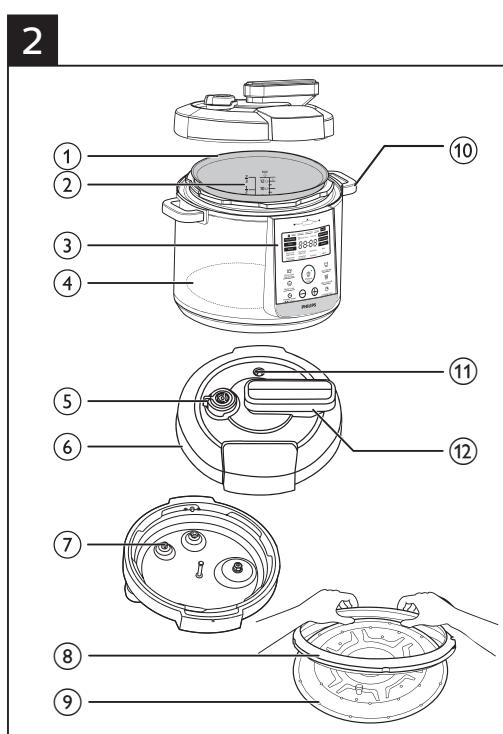
- The appliance must not be immersed.

Warning

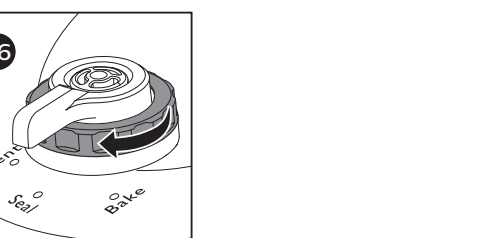
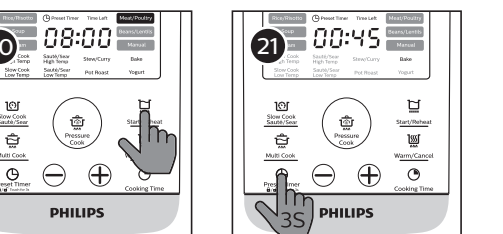
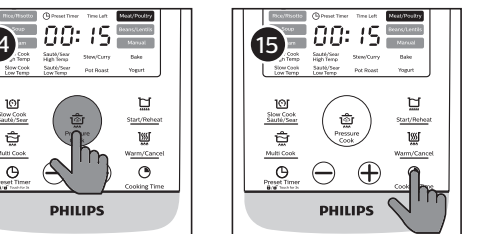
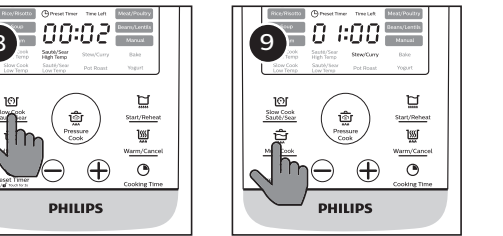
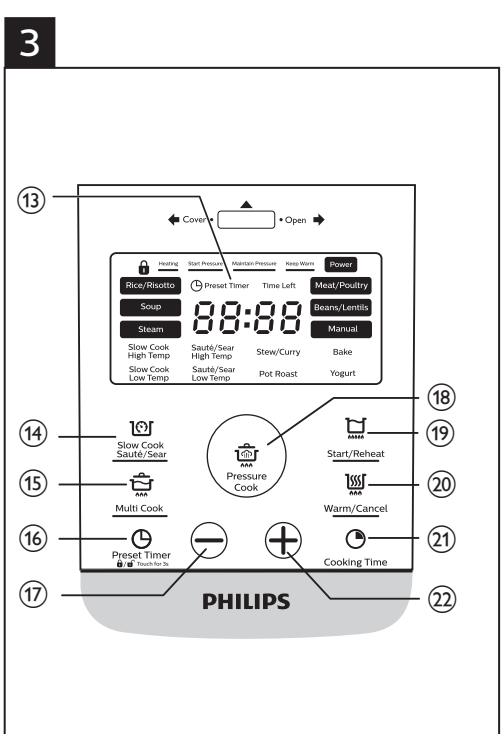
- Check if the voltage indicated on the appliance corresponds to the local power voltage before you connect it.
- The appliance is intended to be used in household or similar applications such as:
 - staff kitchen areas in shops, offices, and other residential type environments;
 - farm houses;
 - by clients in hotels, motels and other residential type environments;



- bed and breakfast type environments.
- This appliance is not intended for use by persons (including children) with reduced physical, sensory or mental capabilities, or lack of experience and knowledge, unless they have been given supervision or instruction concerning use of the appliance by a person responsible for their safety.
- Children should be supervised to ensure that they do not play with the appliance.
- If the supply cord is damaged, it must be replaced by the manufacturer, its service agent or similarly qualified



- persons in order to avoid a hazard.
- The appliance is not intended to be operated by means of an external timer or a separate remote-control system.
- The ducts in the pressure regulator allowing the escape of steam should be checked regularly to ensure that they are not blocked. Refer to: Assembling and disassembling the pressure regulator.
- WARNING RISK OF SCALDING:** The container must not be opened until the pressure has decreased sufficiently.
- Cleaning and user maintenance shall not be made by children.



- Keep the appliance and its cord out of reach of children.
- WARNING:** Always follow the instructions and use the appliance properly to avoid potential injury.
- WARNING:** Make sure to avoid spillage on the power connector to avoid a potential hazard.
- Surface of the heating element is subject to residual heat after use.
- Use clean and soft cloth to clean the surfaces in contact with food.
- Only connect the appliance to a grounded power outlet. Always make sure that the plug is inserted firmly into the power outlet.

- Do not use the appliance if the plug, the power cord, the inner pot, the sealing ring, or the main body is damaged.
- Do not let the power cord hang over the edge of the table or worktop on which the appliance stands.
- Make sure the heating element, the temperature sensor, and the outside of the inner pot are clean and dry before you put the plug in the power outlet.
- Do not plug in the appliance or turn the control knob with wet hands.
- Make sure the power socket is clean and dry before you plug in the appliance.
- Do not use the appliance if too much air or steam is leaking from under the top lid.
- WARNING RISK OF SCALDING:** When cooking soup or viscous liquid, do not release pressure by turning the pressure regulator to the steam vent position, otherwise liquid might spurt from the pressure regulator valve. Wait until the pressure is naturally released and the floating valve has dropped to open the top lid.

Caution

- Never use any accessories or parts from other manufacturers or that Philips does not specifically recommend. If you use such accessories or parts, your guarantee becomes invalid.
- Do not expose the appliance to high temperatures, nor place it on a working or still hot stove or cooker.
- Do not expose the appliance to direct sunlight.

- Place the appliance on a stable, horizontal, and level surface.
- Do not use the handle on the top lid to move the appliance, use the side handles instead.
- Caution risk of scalding:** When pressure is being released from the pressure regulator valve, hot steam or liquid will be ejected. Keep hands and face away from the steam vent.
- Always put the inner pot in the appliance before you put the plug in the power outlet and switch it on.
- Do not place the inner pot directly over an open fire to cook food.
- Do not use the inner pot if it is deformed.
- Make sure that the sealing ring is clean and in good condition.
- The accessible surfaces may become hot when the appliance is operating. Take extra caution when touching the surfaces.
- Caution risk of scalding:** Beware of hot steam coming out of the floating valve and pressure regulator valve during cooking or when you open the lid. Keep hands and face away from the appliance to avoid the steam.
- Do not lift and move the appliance while it is operating.
- Do not exceed the maximum water level indicated in the inner pot to prevent overflow.
- Do not place the cooking utensils inside the pot while cooking.
- Only use the cooking utensils provided. Avoid using sharp utensils.
- To avoid scratches, it is not recommended to cook ingredients

- with crustaceans and shellfish. Remove the hard shells before cooking.
- Do not place a magnetic substance on the lid. Do not use the appliance near a magnetic substance.
- Always let the appliance cool down to room temperature before you clean or move it.
- Always clean the appliance after use. Do not clean the appliance in dishwasher.
- Always unplug the appliance if not used for a longer period.
- If the appliance is used improperly or for professional or semi-professional purposes, or if it is not used according to the instructions in this safety leaflet, the guarantee becomes invalid and Philips refuses liability for any damage caused.
- Visit www.philips.com/support to download the user manual.

Electromagnetic fields (EMF)

This Philips appliance complies with all applicable standards and regulations regarding exposure to electromagnetic fields.

3 What's in the box (fig. 1)

Electric pressure cooker main unit
Inner pot x 2
Soup ladle
Steaming plate
Warranty card
Recipe booklet

Overview (fig. 2)

① Inner pot	⑦ Safety valve
② Water level indication	⑧ Sealing ring
③ Control panel	⑨ Inner lid
④ Heating element	⑩ Main unit handle
⑤ Pressure regulator	⑪ Floating valve
⑥ Top lid	⑫ Lid handle

Controls overview (fig. 3)

Ⓜ Display screen	Ⓜ Pressure Cook button
Ⓜ Slow cook Sauté / Sear button	Ⓜ Start/Reheat button
Ⓜ Multi Cook button	Ⓜ Warm/Cancel button
Ⓜ Preset Timer button	Ⓜ Cooking Time button
Ⓜ Decrease button	Ⓜ Increase button

Before first use

- Remove all packaging materials from the appliance.
- Take out all the accessories from the inner pot.
- Clean the parts of the electric pressure cooker thoroughly before using it for the first time (see chapter "Cleaning").

Note

- Make sure all parts are completely dry before you start using the electric pressure cooker.

4 Using the electric pressure cooker

Preparations before cooking

Before using the electric pressure cooker to cook food, you need to follow below preparations:

- Hold the lid handle and turn it anti-clockwise until the top lid cannot move any more, then lift up the top lid (fig. 4).
- Take out the inner pot from the electric pressure cooker and put the pre-washed food in the inner pot.

Note

- Do not fill the inner pot with less than 1/3 or more than 2/3 full of food and liquid.
- For food that expands during cooking, do not fill the inner pot with more than 1/2 full of food and liquid.
- For rice cooking, follow the water level indications on the inside of the inner pot. You can adjust the water level for different types of rice and your own preference. Do not exceed the maximum water level indication.
- Make sure the floating valve falls down before cooking.

- Wipe the outside of the inner pot dry (fig. 5) and put it back into the electric pressure cooker.
- Place the top lid onto the electric pressure cooker and turn it clockwise (fig. 6). You will hear a "click" sound when the top lid is properly locked.

Note

- Make sure the sealing ring is properly assembled around the inside of the top lid.
- Make sure the prature regulator and the floating valve are clean and not blocked.
- Make sure the outside of the inner pot is dry and clean, and that there is no foreign residue on the heating element.
- Make sure the inner pot is in proper contact with the heating element.

Cooking time regulating range

For non-pressure cooking

Cooking function	Cooking temperature	Default cooking time	Cooking time
Slow cook High Temp	90°C±10°C	6 hrs	2-12 hrs
Slow cook Low Temp	70°C±10°C	6 hrs	2-12 hrs
Sauté/Sear High Temp	150°C±10°C	2 mins	2 mins-2 hrs
Sauté/Sear Low Temp	130°C±10°C	2 mins	2 mins-2 hrs
Stew/Curry	90°C±10°C	1 hr	20 mins-10 hrs
Bake	140°C±10°C	45 mins	10-59 mins
Yogurt	40°C±10°C	8 hrs	6-12 hrs
Warm	65°C-85°C	12 hrs	\
Start/Reheat	85°C±10°C	25 mins	8-25 mins

For pressure cooking

Cooking function	Default cooking time (minute)	Cooking time (minute)
Rice/Risotto	14	\
Soup	20	20-59
Steam	10	5-59
Meat/ Poultry	15	12-59
Beans/Lentils	30	25-59
Manual	2	2-59

Non-pressure cooking

Note

- For non-pressure cooking, you can cook food without adding water in the inner pot. In this case, make sure to turn the pressure regulator to **Bake**.
- Make sure to keep the top lid open for the entire time when you cook food in the **Sauté/sear** mode.
- To choose the **Reheat** function, press **Start/Reheat** when the appliance is in standby mode.

- Follow the steps in "Preparations before cooking".
- Turn the pressure regulator to the **Bake** position.
 - For **Slow cook, Sauté/Sear, Stew/Curry, Pot Roast, Bake** and **Yogurt**, turn the pressure regulator to **Bake**.

- Put the plug in the power socket.
- Press the **Slow Cook Sauté/Sear** button (Ⓜ) or **Multi Cook** button (Ⓜ) to choose a desired non-pressure cooking function (fig. 8 & fig. 9).
 - The selected cooking mode indicator flashes.
 - The default cooking time is displayed on the screen.
- If you want to set a different cooking time, press the **Cooking Time** button (Ⓜ) (fig. 10).
 - The cooking time flashes on the screen.

Note

- Cooking time will start count down once internal temperature reaches cooking temperature as outlined in "regulating range table".

- Press the +/- button to set the cooking time (fig. 11).
- Press and hold the **Start/Reheat** button (Ⓜ) for 3 seconds and the electric pressure cooker starts working in the selected mode (fig. 12).
 - You will hear two beeps after you press the start button.
- When the cooking time has elapsed, you will hear two beeps and the electric pressure cooker switches to keep-warm mode automatically.
 - The keep warm indicator lights up.
- Hold the top lid handle and turn the lid anti-clockwise until it cannot move any more, then lift it up (fig. 4).

Tip

- You can adjust the cooking time for different types of food according to your preference.

Pressure cooking

Note

- Make sure the floating valve drops down before cooking.

- Follow the steps in "Preparations before cooking".
- Turn the pressure regulator to the seal position (fig. 13).
- Put the plug in the power socket.
- Press the **Pressure Cook** button (Ⓜ) to choose a desired cooking function (fig. 14).
 - The selected cooking mode indicator flashes.
 - The default cooking time is displayed on the screen.
- If you want to set a different cooking time, press the **Cooking Time** button (Ⓜ) (fig. 15).
 - The cooking time flashes on the screen.
- Press the +/- button to set the cooking time (fig. 16).
- Press and hold the **Start/Reheat** button (Ⓜ) for 3 seconds and the electric pressure cooker starts working in the selected mode (fig. 17).
 - You will hear two beeps after you press the start button.
- When the electric pressure cooker reaches the working pressure, the cooking time starts to count down.
- When the cooking time has elapsed, you will hear two beeps and the electric pressure cooker switches to keep-warm mode automatically.
 - The keep warm indicator lights up.
- Caution risk of scalding:** Turn the pressure regulator to the vent position (fig. 18).
 - The electric pressure cooker starts releasing pressure.
 - The floating valve drops when the pressure is released sufficiently.
- Hold the top lid handle and turn the lid anti-clockwise until it cannot move any more, then lift it up (fig. 4).

Note

- When cooking soup or viscous liquid, do not release pressure by turning the pressure regulator to the steam vent position, otherwise liquid might spurt from the pressure control valve. Wait until the pressure is naturally released and the floating valve has dropped to open the top lid.

- After the cooking is finished and the pressure is released, unplug the electric pressure cooker to turn off the keep warm function or when not in use.
- You can press the **Warm/Cancel** button to cancel the cooking process.

Tip

- You can adjust the cooking time for different types of food according to your preference. Cooking time is not adjustable for rice cooking function.

Preset time for delayed cooking

Note

- The preset time is not available in **Sauté/Sear High Temp, Sauté/Sear Low Temp** and **Pot Roast**.

You can preset the delayed cooking time for different cooking functions. The preset timer is available up to 24 hours, but is not applicable to the cake baking function.

- Choose the desired cooking mode, then press the preset timer button (Ⓜ) (fig. 18).
- Press the +/- button to choose the preset time (fig. 19).
- Once the preset time is set, press the start button (Ⓜ) to enter preset mode (fig. 20).
 - The remaining preset time is displayed on the screen.
- When the preset time is elapsed, the electric pressure cooker starts working in the selected cooking mode automatically.

Setting up child lock

To protect your child from using the product, you can set up the child lock function.

- Press and hold the preset timer button (Ⓜ) for 3 seconds to enter the child lock mode (fig. 21).
 - The child lock icon appears on the display screen.
- To unlock, press and hold the preset timer button (Ⓜ) for 3 seconds again.
 - The child lock icon disappears from the display screen.

Assembling and disassembling the pressure regulator

Caution

- Do not disassemble the pressure regulator during cooking. Always unplug the electric pressure cooker and wait until the pressure has been released sufficiently.

To disassemble the pressure regulator:

- Turn the lower screw anti-clockwise until it becomes loose. (fig. 22).
- Pull it up and take out the pressure regulator. (fig. 23).

To assemble the pressure regulator:

- Assemble the lower screw back to the regulator. (fig. 24).
- Make sure the regulator points at the sealed position and put it back to the steam valve. (fig. 25).
- Turn the screw clockwise until it is fastened. (fig. 26).

5 Specifications

Model Number	HD2178
Rated power output	1000W
Rated capacity	6L

Note

- Always unplug the appliance if not used for a longer period.

6 Cleaning and Maintenance

Note

- Unplug the electric pressure cooker before starting to clean it.
- Wait until the electric pressure cooker has cooled down sufficiently before cleaning it.

Interior

Inside of the outer lid and the main body:

- Wipe with wrung out and damp cloth.
- Make sure to remove all the food residues stuck to the electric pressure cooker.

Heating element:

- Wipe with wrung out and damp cloth.
- Remove food residues with wrung out and damp cloth or toothpicks.

Sealing ring:

- Soak in warm water and clean with sponge.
- Do not wash the gasket in dishwasher as this may deform it.

Exterior

Surface of the outer lid and outside of the main body:

- Wipe with a cloth dampened with soap water.
- Only use soft and dry cloth to wipe the control panel.

- Make sure to remove all the food residues around the pressure regulator and floating valve.

Pressure control valve and floating valve:

- Disassemble the pressure control valve, soak it in warm water, and clean with sponge.
- Remove food residues in the pressure control valve and floating valve with toothpicks.

Accessories

Rice spoon, soup ladle, steaming plate and inner pot:

- Soak in hot water and clean with sponge.

7 Environment

Do not throw away the appliance with normal household waste at the end of its life, but hand it in at an official collection point for recycling. By doing this, you can help to preserve the environment.

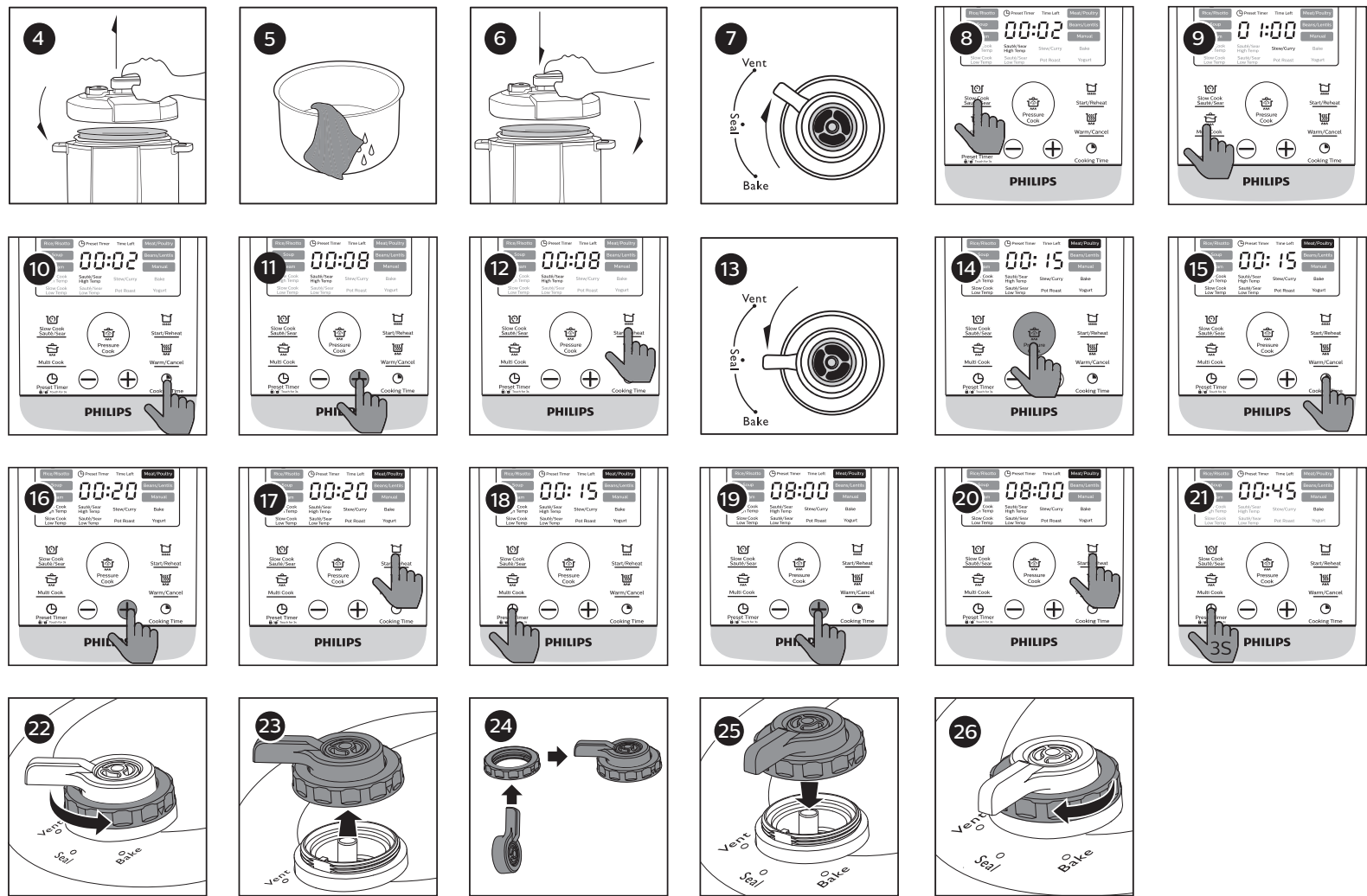
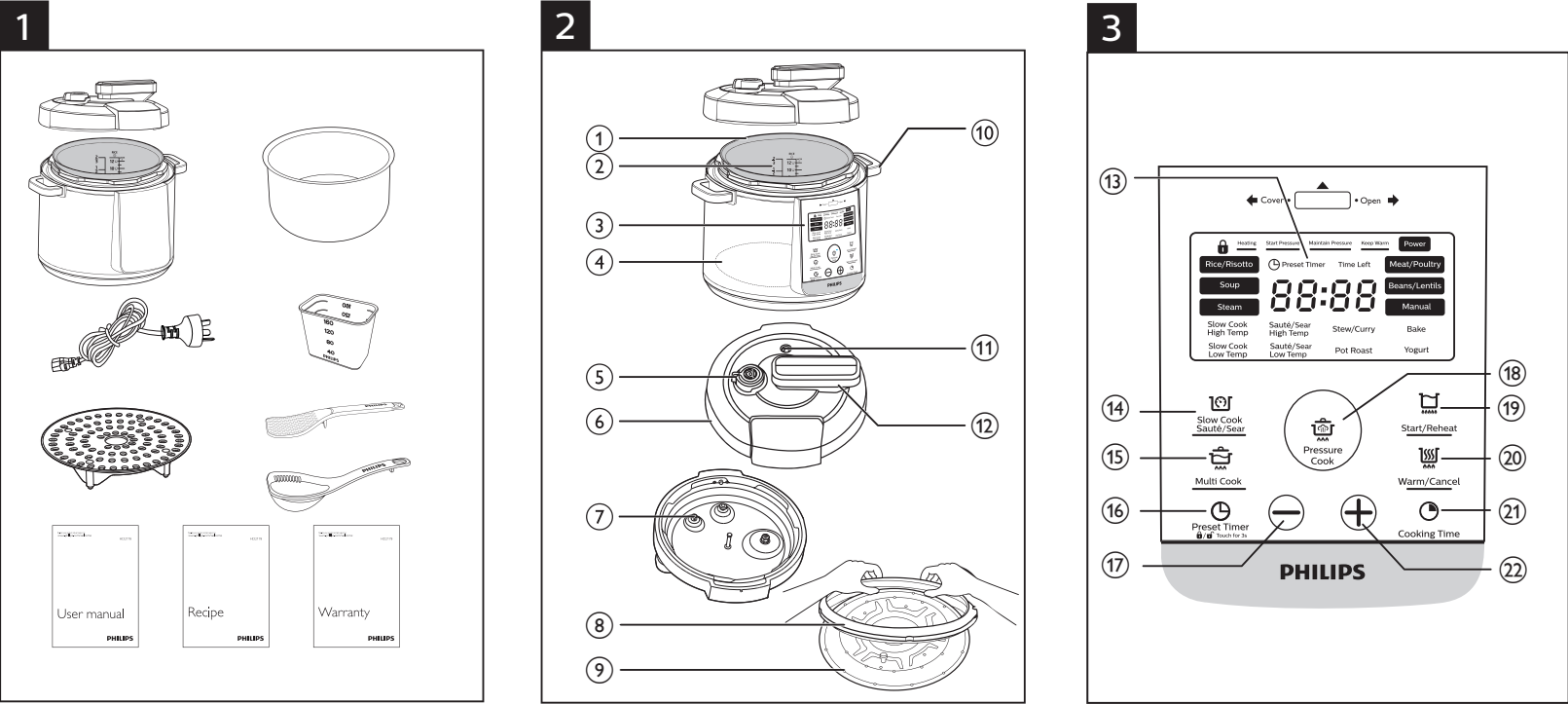
8 Guarantee and service

If you need service or information, or if you have a problem, visit the Philips website at www.philips.com or contact the Philips Customer Care Center in your country. You can find its phone number in the worldwide guarantee leaflet. If there is no Customer Care Center in your country, go to your local Philips dealer.

9 Troubleshooting

If your electric pressure cooker does not function properly or if the cooking quality is insufficient, consult the table below. If you are unable to solve the problem, contact a Philips service center or the Consumer Care Center in your country.

Problem	Solution
I have difficulties closing the top lid.	The sealing ring is not well assembled. Make sure the sealing ring is well assembled around the inside of the top lid. The floating valve blocks the locking pin. Push down the floating valve so that it does not block the locking pin.
I have difficulties opening the top lid after the pressure is released.	The floating valve has not dropped. Push the floating valve down.
The food is not cooked.	Make sure that there is no foreign residue on the heating element and the outside of the inner pot before switching the electric pressure cooker on. The heating element is damaged, or the inner pot is deformed. Take the cooker to your Philips dealer or a service center authorized by Philips. Incorrect function or time was selected, increase cooking time or change cooking method.
Air or steam leaks from under the lid.	The sealing ring is not well assembled. Make sure the sealing ring is well assembled around the inside of the top lid. There is food residue in the sealing ring. Make sure the sealing ring is clean. The top lid is not properly closed. Make sure the top lid is properly closed. The pressure level inside of the appliance is abnormal. In this case the safety valve will be releasing steam. Take the appliance to your Philips dealer or a service center authorized by Philips.
The floating valve does not rise after the appliance starts pressurizing.	There is food residue in the rubber ring of the floating valve. Clean the rubber ring of the floating valve. The top lid or the pressure regulator has malfunction. Take the appliance to your Philips dealer or a service center authorized by Philips.
E3 displays on the screen.	The temperature inside the inner pot is too high. Wait until it falls down to room temperature.
E1, E2, or E4 displays on the screen.	The electric pressure cooker has malfunction. Take the appliance to a Philips dealer or a service center authorised by Philips.
Water steam leaks from pressure regulator valve.	Valve screw is loose or food residual is inside the valve. Switch off appliance and let cool down to room temperature; disassemble valve as per maintenance instructions.



简体中文

1 您的万能锅

感谢您的惠顾，欢迎光临飞利浦！
为充分享受飞利浦提供的支持，请在
www.philips.com/welcome 注册您的产品。

2 重要事项

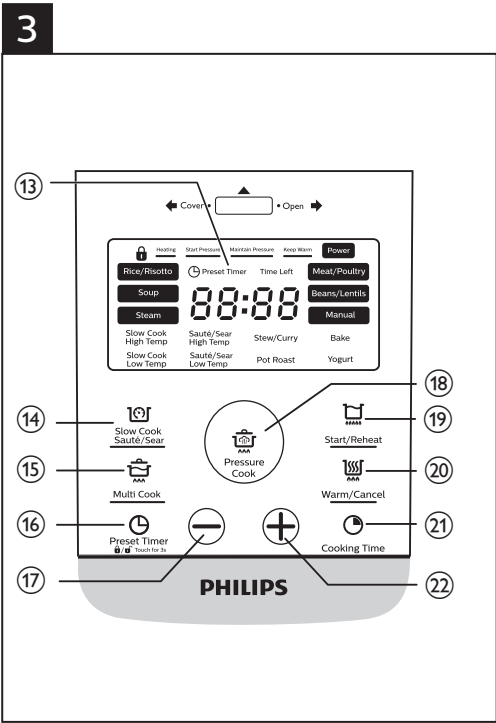
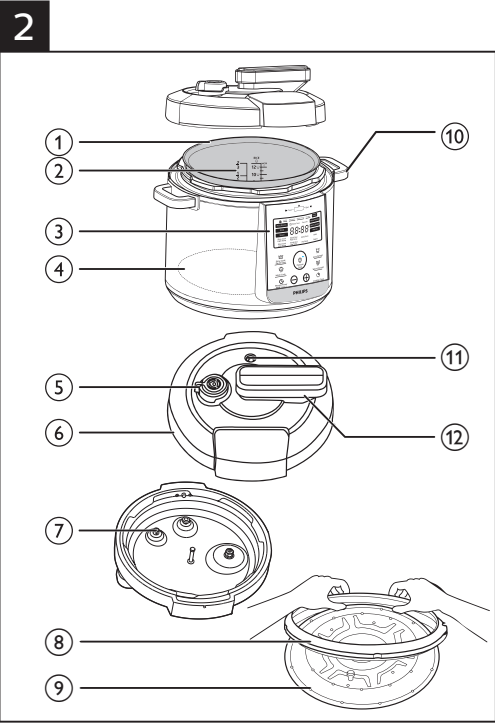
使用万能锅之前，请仔细阅读本安全说明，并妥善保管以供日后参考。

危险

- 不得将产品浸入水中。

警告

- 在产品通电之前，请先检查本产品上所标的电压与当地的供电电压是否相符。
- 本产品仅限于家用及类似用途，如：
 - 商店、办公场所及其它住宿型环境的厨房；
 - 农庄；



- 使用后，加热元件表面仍有余热。

- 使用洁净的软布清洁与食物接触的表面。

- 本产品只能使用带接地线的插座。务必确保插头牢固插到电源插座上。

- 如果插头、电源线、内锅、密封环或煲身损坏，请勿使用本产品。
- 不要将电源线悬挂在放置产品支架的桌子或工作台的边缘上。

- 将插头接入电源插座之前，应确保加热元件、温度传感器和内锅外侧是洁净、干燥的。
- 切勿用浸湿的手插入产品插头或旋转控制旋钮。

- 插入产品插头之前，请确保电源插座清洁干燥。

- 如果顶盖下有过多空气或蒸汽漏出，请勿使用本产品。

- 烫伤危险警告：**煮汤或粘稠液体时，请勿通过将压力调节器转至蒸汽孔位置来释放压力，否则液体可能会从压力调节器阀中喷射出来。等到压力自然释放，浮子阀降下，再打开上盖。

警告

- 切勿使用由其它制造商生产的，或未经飞利浦特别推荐的任何附件或部件。如果使用此类附件或部件，您的保修将失效。
- 切勿将产品暴露在高温之下，也不要将电饭煲放在正在工作或仍然发热的炉具或炊具上。
- 切勿将产品直接曝晒于阳光下。
- 将本产品放在稳固、水平且平坦的表面。
- 请勿使用上盖上的手柄移动产品，而应使用侧面手柄。
- 注意烫伤危险：**通过压力调节器阀释放压力时，会喷出高温蒸汽或液体。使双手和脸远离蒸汽孔。

- 将插头插到电源插座并打开之前，务必将内锅放到产品内。
- 不要将内锅直接放在火上烹饪食物。

- 如果内锅已变形，请勿使用。
- 确保密封圈保持清洁且状态良好。
- 产品在使用时，表面会变得很热。接触表面时，请特别注意。

- 注意烫伤危险：**小心烹饪期间从浮子阀和压力调节器阀排出的高温蒸汽，或在打开盖子时冒出的高温蒸汽。双手和脸不要靠近本产品，以免蒸汽烫伤。
- 运行期间，切勿提起及移动本产品。
- 请不要超出内锅中标注的最高水位标示，以免溢水。

- 烹饪时，请勿将烹饪器具放入锅中。
- 仅使用随附的烹饪器具。不要使用尖利的器具。
- 为避免刮擦，建议您不要烹饪含虾蟹和贝类的食材。烹饪前去掉坚壳。
- 不要将磁性物质放在盖上。不要在靠近磁性物质的地方使用本产品。

- 一定要先让产品冷却至室温，才能进行清洁或移动。
- 每次使用后应清洁产品。请勿在洗碗机中清洗本产品。
- 如果长时间不用，务必拔掉产品插头。
- 对本产品使用不当，或者将其用于专业、半专业用途，或者没有根据本安全说明中的说明进行使用，此类情况下保修将失效，飞利浦对此类损坏概不负责。

- 访问 www.philips.com/support 以下载用户手册。

电磁场 (EMF)

本飞利浦产品符合所有有关暴露于电磁场的适用标准和法规。

3 包装盒内物品（图 1）

- 万能锅主装置
- 2 个内锅
- 汤勺
- 蒸架
- 保修卡
- 美味食谱
- 饭勺
- 量杯
- 用户手册
- 电源线

概述（图 2）

① 内胆	⑦ 安全阀
② 水位标记	⑧ 密封圈
③ 控制面板	⑨ 内盖
④ 加热元件	⑩ 主装置手柄
⑤ 压力调节器	⑪ 浮子阀
⑥ 上盖	⑫ 锅盖把手

控件概述（图 3）

⑬ 显示屏	⑱ 压力烹饪按钮
⑭ 慢炖/煎炒按钮	⑲ 启动/再加热按钮
⑮ 多重烹饪按钮	⑳ 保温/取消按钮
⑯ 预设定时器按钮	㉑ 烹饪时间按钮
⑰ 减小按钮	㉒ 增大按钮

首次使用之前

- 除去产品的所有包装材料。
- 从内锅中取出所有附件。
- 首次使用前彻底清洁万能锅的部件（请参阅“清洁”一章）。

注意

- 开始使用之前，确保所有万能锅部件均已完全干燥。

4 使用万能锅

烹饪前准备

使用万能锅烹饪食物之前，您需要执行下面的准备工作：

- 按下盖子手柄并逆时针转动，直至上盖无法再移动，然后将上盖提起（图 4）。
- 从万能锅中取出内锅，将淘洗好的食物放入内锅。

注意

- 内锅中所装食物和液体不得少于 1/3 或超过 2/3 锅体。
- 对于烹饪过程中会膨胀的食物，内锅中所装食物和液体不得超过 1/2 锅体。
- 对于煮饭，请按照内锅内侧的水位指示放水。您可以根据米的品种及个人喜好调整水位。请勿超出最高水位标示。
- 烹饪前确保浮子阀落下。

- 擦干内锅外侧（图 5），然后将其放回万能锅。
- 将上盖放回万能锅并将其顺时针转动（图 6）。上盖锁定到位后，可听到“咔哒”一声。

注意

- 确保密封圈已正确安装在顶盖内侧周围。
- 确保压力调节器和浮子阀保持洁净且未被堵塞。
- 请确保内胆的外表面洁净且干燥，并且没有其他杂物黏附在加热元件上。
- 确保内锅已正确接触加热元件。

烹饪时间调节范围

适用于非压力烹饪

烹饪功能	烹饪温度	默认烹饪时间	烹饪时间
高温慢炖	90°C ± 10°C	6 小时	2-12 小时
低温慢炖	70°C ± 10°C	6 小时	2-12 小时
高温煎炒	150°C ± 10°C	2 分钟	2 分钟-2 小时
低温煎炒	130°C ± 10°C	2 分钟	2 分钟-2 小时
焖/咖喱饭	90°C ± 10°C	1 小时	20 分钟-10 小时
炖肉	90°C ± 10°C	6 小时	2-12 小时
烘焙	140°C ± 10°C	45 分钟	10 - 59 分钟
酸奶	40°C ± 10°C	8 小时	6 - 12 小时
保温	65°C - 85°C	12 小时	\
启动/再加热	85°C ± 10°C	25 分钟	8 - 25 分钟

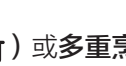
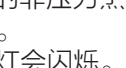
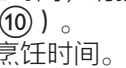
适用于压力烹饪

烹饪功能	默认烹饪时间（分钟）	烹饪时间（分钟）
米饭/菜饭	14	\
汤	20	20-59
蒸	10	5-59
肉类/家禽	15	12-59
豆类/小扁豆	30	25-59
手动	2	2-59

非压力烹饪

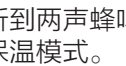
注意

- 对于非压力烹饪，烹饪食物时可无需向内锅加水。在此情况下，确保将压力调节器转至**烘焙**。
- 用**慢炖/煎炒**模式烹饪时，要确保在整个烹饪过程中保持上盖开启。
- 当产品处于待机模式时，要选择**再加热**功能，请按**启动/再加热**。

- 请遵循“烹饪前准备”中的步骤。
- 将压力调节器转至**烘焙**位置。
 - 用**慢炖/煎炒**、**焖/咖喱饭**、**炖肉**、**烘焙**和**酸奶**模式烹饪时，请将压力调节器转至**烘焙**。
- 将电源插头接入插座。
- 按**慢炖/煎炒按钮**（）或**多重烹饪按钮**（）可选择所需的非压力烹饪功能（图 8 和图 9）。
 - 所选烹饪模式指示灯会闪烁。
 - 屏幕上会显示默认烹饪时间。
- 如果要设置不同的烹饪时间，请按**烹饪时间按钮**（）（图 10）。
 - 屏幕上会闪烁显示烹饪时间。

注意

- 内部温度达到烹饪温度后，烹饪时间将开始倒计时，如“调节范围表”中所述。

- 按 +/- 按钮可设置烹饪时间（图 11）
- 长按 3 秒**启动/再加热按钮**（），万能锅将以选定的模式开始工作（图 12）。
 - 按启动按钮后，可听到两声蜂鸣音。
- 烹饪时间结束后，可听到两声蜂鸣音，万能锅会自动切换至保温模式。
 - 保温指示灯会亮起。
- 按住上盖手柄并逆时针转动盖子，直至其无法再移动，然后将其提起（图 4）。

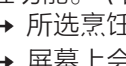
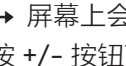
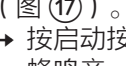
提示

- 您可以根据个人喜好调整各类食物的烹饪时间。

压力烹饪

注意

- 烹饪前确保浮子阀落下。

- 请遵循“烹饪前准备”中的步骤。
- 将压力调节器转至密封位置（图 13）。
- 将电源插头接入插座。
- 按**压力烹饪按钮**（）选择所需的烹饪功能。（图 14）。
 - 所选烹饪模式指示灯会闪烁。
 - 屏幕上会显示默认烹饪时间。
- 如果要设置不同的烹饪时间，请按**烹饪时间按钮**（）（图 15）。
 - 屏幕上会闪烁显示烹饪时间。
- 按 +/- 按钮可设置烹饪时间（图 16）
- 长按 3 秒**启动/再加热按钮**（），万能锅将以选定的模式开始工作（图 17）。
 - 按启动按钮后，可听到两声蜂鸣音。
- 万能锅达到工作压力后，烹饪时间开始倒计时。
- 烹饪时间结束后，可听到两声蜂鸣音，万能锅会自动切换至保温模式。
 - 保温指示灯会亮起。
- 注意烫伤危险：**将压力调节器转至通气位置（图 21）。
 - 万能锅开始释放压力。
 - 压力充分释放后，浮子阀会降下。
- 按住上盖手柄并逆时针转动盖子，直至其无法再移动，然后将其提起（图 4）。

注意

- 煮汤或粘稠液体时，请勿通过将压力调节器转至蒸汽孔位置来释放压力，否则液体可能会从压力控制阀中喷射出来。等到压力自然释放，浮子阀降下，再打开上盖。
- 烹饪完成且压力释放后或不使用时，请按下方万能锅的插头以关闭保温功能。
- 按**保温/取消**按钮可取消烹饪过程。

提示

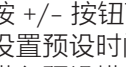
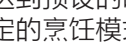
- 您可以根据个人喜好调整各类食物的烹饪时间。煮饭功能的烹饪时间不可调整。

延长烹饪的预设时间

注意

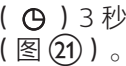
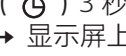
- 高温慢炖、低温慢炖和炖肉**模式无法使用预设时间。

您可以为不同的烹饪功能预设延迟烹饪时间。预设定时器最长可达 24 小时，但不适用于蛋糕烘焙功能。

- 选择所需的烹饪模式，然后按预设定时器按钮（）（图 18）。
- 按 +/- 按钮可选择预设时间（图 19）
- 设置预设时间后，按启动按钮（）可进入预设模式（图 20）。
 - 屏幕上会显示剩余的烹饪时间。
- 达到预设的时间后，万能锅会自动以选定的烹饪模式开始工作。

设置儿童锁

为防止儿童使用产品，您可以设置儿童锁功能。

- 按住预设定时器按钮（）3 秒钟可进入儿童锁模式（图 21）。
 - 显示屏上将显示儿童锁图标。
- 要解锁，请再次按住预设定时器按钮（）3 秒钟。
 - 显示屏上的儿童锁图标将消失。

拆装压力调节器

警告

- 请勿在烹饪过程中拆卸压力调节器。务必按下万能锅的插头并等到压力完全释放。

拆卸压力调节器：

- 逆时针旋转下方的螺钉，直至其变松。（图 22）
- 拉起该螺钉并取出压力调节器。（图 23）

要安装调压力调节器：

- 将下方的螺钉安装回压力调节器。（图 24）
- 确保压力调节器指向密封位置，然后将其放回蒸汽阀中。（图 25）
- 顺时针旋转螺钉，直至其固定。（图 26）

5 规格

型号	HD2178
额定输出功率	1000 瓦
额定容量	6 升

注意

- 如果长时间不用，务必拔掉产品插头。

6 清洁和保养

注意

- 先拔掉万能锅的插头再开始清洗。
- 等到万能锅完全冷却后再开始清洗。

内饰

外盖及煲身内侧：

- 用拧干的湿布进行擦拭。
- 确保清理掉黏在万能锅上的所有食物残渣。

加热元件：

- 用拧干的湿布进行擦拭。
- 用拧干的湿布或牙签清理食物残渣。

密封圈：

- 浸泡到温水中并用海绵清洁。
- 请勿用洗碗机清洗垫片，这样会使其变形。

外部

外盖表面和煲身外侧：

- 用蘸有肥皂水的布进行擦拭。
- 只能使用柔软的干布擦拭控制面板。
- 确保清理掉压力调节器和浮子阀周围的所有食物残渣。

压力控制阀和浮子阀：

- 拆下压力控制阀，将其浸泡在温水中并使用海绵清洁。
- 用牙签清理掉压力控制阀和浮子阀中的食物残渣。

附件

- 饭勺、汤勺、蒸架和内锅；
- 浸泡到热水中并用海绵清洁。

7 环保

弃置产品时，请不要将其与一般生活垃圾堆放在一起，应将其交给官方指定的回收中心。这样做有利于环保。

8 保修与服务

如需服务或信息，或有任何疑问，请访问飞利浦网站：www.philips.com，或联系您所在国家/地区的飞利浦客户服务中心。可在全球保修卡中找到其电话号码。如果您所在的国家/地区没有飞利浦客户服务中心，请向当地的飞利浦经销商求助。

9 故障排除

如果万能锅工作不正常，或烹饪质量有缺陷，请查询下表。如果无法解决问题，则请联系您所在国家/地区的飞利浦服务中心或客户服务中心。

问题	解决方法
我无法合上上盖。	密封圈未装好。确保密封圈已正确安装在上盖内侧周围。 浮子阀阻塞了锁销。向下压浮子阀，使其无法阻塞锁销。
压力释放后无法打开上盖。	浮子阀未落下。向下压浮子阀。
食物未完全熟透。	确保加热元件以及内锅外部没有杂物黏附，再打开万能锅。 加热元件损坏或内锅变形。请将电饭煲送往当地的飞利浦经销商，或经飞利浦授权的客户服务中心。 时间或功能选择不当，请增加烹饪时间或更改烹饪方式。
盖子下面有空气或蒸汽漏出。	密封圈未装好。确保密封圈已正确安装在上盖内侧周围。 密封圈中有食物残留物。确保密封圈保持洁净。 上盖未盖好。确保盖好上盖。 产品内的压力水平异常。在这种情况下，安全阀将释放蒸汽。请将本产品送往飞利浦经销商，或经飞利浦授权的服务中心。
浮子阀中有空气或蒸汽漏出。	浮子阀的橡胶圈中有食物残留物。清洁浮子阀的橡胶圈。 浮子阀的橡胶圈已损坏。更换橡胶圈。
产品开始加压后浮子阀未升起。	确保在内锅中放入足量的食物和水。 上盖或压力调节器出现故障。请将本产品送往飞利浦经销商，或经飞利浦授权的服务中心。
屏幕上显示 E3。	内锅温度太高。等待其降至室温。
屏幕上显示 E1、E2 或 E4。	万能锅出现故障。请将产品送往飞利浦经销商或经飞利浦授权的服务中心。
压力调节器阀冒出水蒸汽。	压力调节器阀螺钉松动或阀中有残留食物。关闭产品并让其冷却至室温；按照维护说明拆下压力调节器阀。