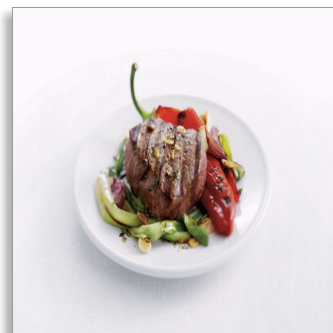




Philips
Table grill

2300 W

Ribbed/Smooth plate
High temperature grill plate
300 x 370 mm



HD4419/20

Discover fuller flavours

Constant high temperature to seal in the flavour

This powerful Philips table grill has a high temperature plate to seal in the juicy flavour. It's fast-heating and has an extra thick plate that stays hot no matter what, while the ribbed-and-smooth surface cooks up many delicious delights.

Discover variety of fuller flavours

- High temperature grill plate seals in all the flavour
- Adjustable thermostat ensures perfect results for every food
- High power for heating up fast and keeping a constant heat

Only a little effort

- Spatula
- Non-stick grilling surface
- Easy to store upright
- Dishwasher-safe parts

Smart features

- Grease drainage
- Ribbed-and-smooth top allows stir-frying, grilling and more

PHILIPS

Table grill
2300 W Ribbed/Smooth plate, High temperature grill plate, 300 x 370 mm

Highlights

High temperature grill plate

The high temperature of the Philips electric grill plate seals in all the juices and flavour of the food. That's because the moment the food comes into contact with the surface of the grill, it begins to sizzle and brown, forming a tasty crust that keeps all the goodness and flavour inside, where it belongs.

Ribbed-and-smooth grill plate

The versatile grill plate gives you the choice of cooking with either a ribbed or smooth grilling surface, so you can enjoy your food the way you like. The smooth area is suitable for stir-frying and grilling small pieces of food. The ribbed surface creates that irresistible flame-grilled effect.

Adjustable thermostat



Adjustable thermostat ensures the perfect result.

Upright storage



Easy to store upright; tidy storage of cord and tray.

Spatula



Spatula for flipping, stirring and removing food.

Dishwasher-safe parts

Dishwasher-safe parts make cleaning easy.

Grease drainage



Excess grease is drained to removable tray.

HD4419/20

Specifications

General specifications

- Integrated on/off switch
- Temperature light
- Cool-touch handgrips
- Non-slip feet
- Cord storage
- Grease tray storage

Technical specifications

- Cord length: 0.8 m
- Power: 2000-2300 W
- Voltage: 220-240 V
- Frequency: 50/60 Hz

Design and finishing

- Color(s): Metal/black
- Materials: Steel housing / ALU grilling plate / plastic parts

Weight and dimensions

- Product dimensions (W x H x D): 515.9 x 73 x 312 mm
- Weight appliance: 4.0 kg
- Grill plate dimensions: 300 x 370 mm



Issue date 2016-11-11

Version: 8.0.1

12 NC: 0000 000 00000

© 2016 Koninklijke Philips N.V.
All Rights reserved.

Specifications are subject to change without notice.
Trademarks are the property of Koninklijke Philips N.V.
or their respective owners.

www.philips.com