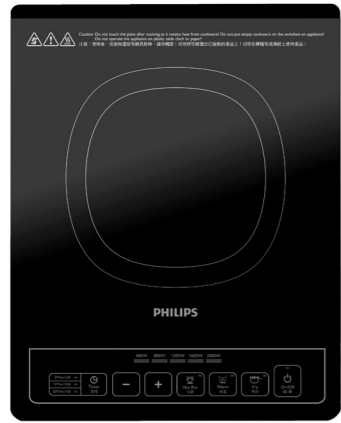


HD4902



EN User manual

ZH-HK 使用手冊

PHILIPS



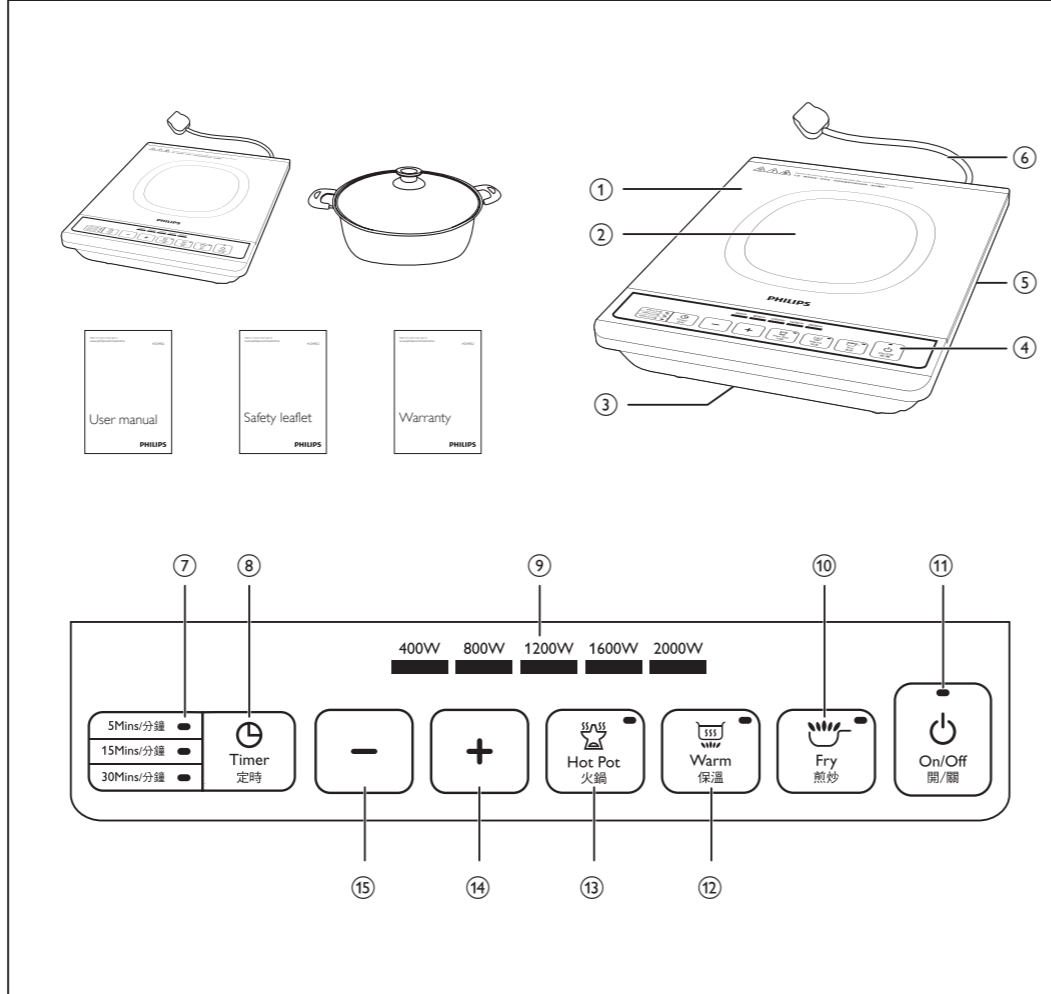
All registered and unregistered trademarks are property of their respective owners.
 © 2012 Koninklijke Philips Electronics N.V.
 All rights reserved.

HD4902_UM_ZH-HK_V1.0_371x270mm_0814

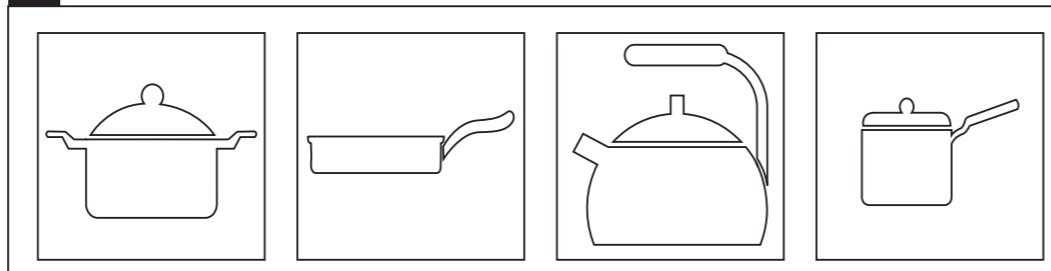
882490252450



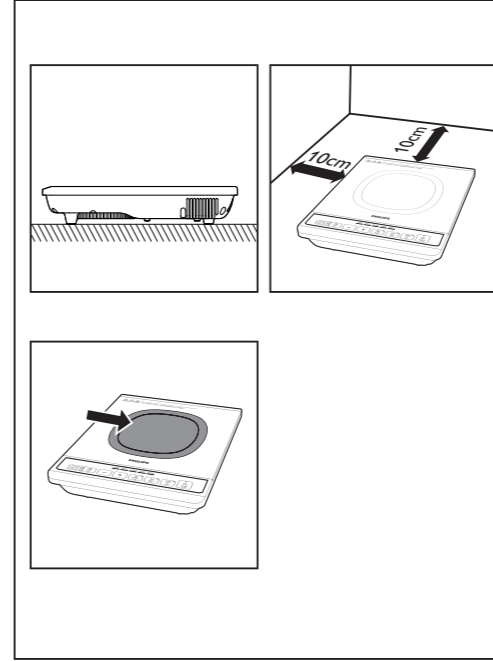
Overview 概覽



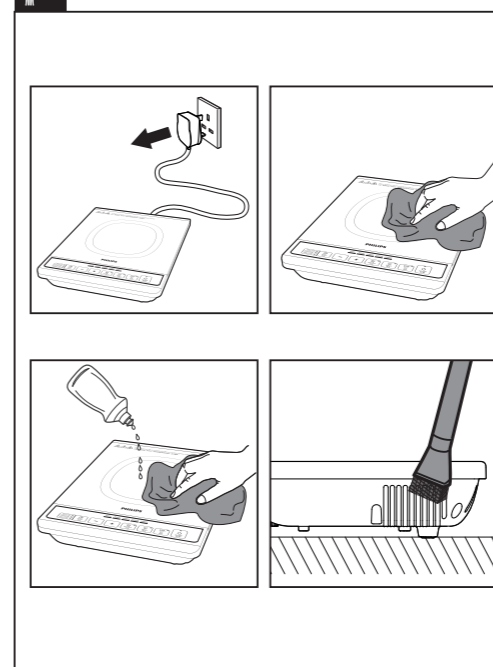
Recommended types and sizes of cookware 建議的廚具種類和大小



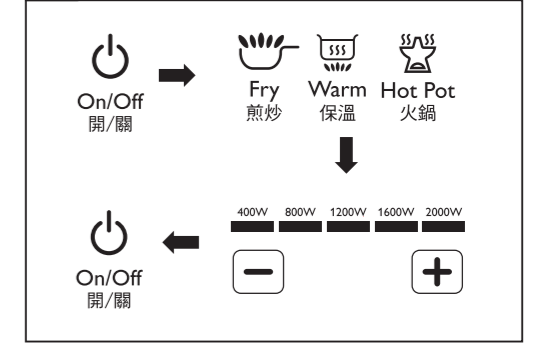
Preparing for use 準備使用



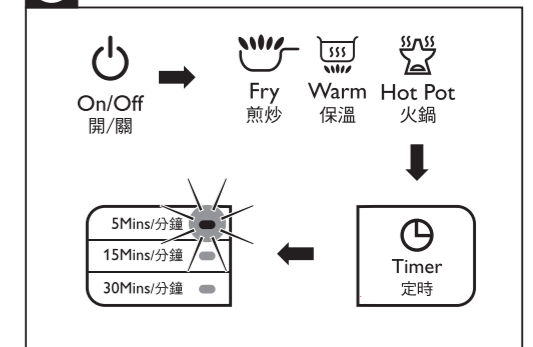
Cleaning 清潔



Using the induction cooker 使用電磁爐



Using the timer 使用定時功能



English

1 Your induction cooker

Congratulations on your purchase and welcome to Philips! To fully benefit from the support that Philips offers, register your product at www.philips.com/welcome.

2 What's in the box

Induction cooker main unit Pot
Important information leaflet User manual
Warranty card

Overview

①	Cooking plate	④	Control panel
②	Cooking zone	⑤	Air outlets
③	Air inlet	⑥	Power cord

Controls overview

⑦	Timer indicator	⑫	Warm mode
⑧	Timer button	⑬	Hot pot mode
⑨	Cooking power	⑭	Increase button
⑩	Fry mode	⑮	Decrease button
⑪	On/Off button		

3 Before first use

Remove all packaging materials from the induction cooker.

Preparing for use

- Place the appliance on a dry, stable and level surface.
- Make sure there is at least 10cm free space around the appliance to prevent overheating.
- Always place the cookware on the cooking zone during cooking.
- Make sure you use cookware of the correct types and sizes (see the table below).

Recommended types and sizes of cookware

Material	Cookware with a bottom made of iron or magnetic stainless steel
Shape	Cookware with a flat bottom
Size	Cookware with a bottom diameter of 10-23cm, depending on the cooking mode

4 Using the induction cooker

There are three cooking modes: Hot pot (燉), Warm (暖), and Fry (炒).

- Follow the steps in "Preparing for use".
- Press the On/Off button (⏻) to switch on the appliance, and the On/Off indicator lights up.
- Press the desired cooking mode button, the corresponding indicator lights up and the induction cooker starts working in the selected mode.
- When the cooking is finished, press the On/Off button (⏻) to switch off the appliance.
- Unplug the induction cooker after the fan stops working.

Note

- During cooking, you can change the power level by pressing the Increase (+) or Decrease (−) button.

Cooking power

Refer to below table for the cooking power of different cooking modes.

Cooking mode	Cooking Power
Fry (炒)	400W - 2000W
Hot pot (燉)	400W - 2000W
Warm (暖)	400W - 2000W

Using the timer

You can use the Timer button (⌚) to decide how much time you want the appliance to work at different cooking modes.

- Follow the steps in "Preparing for use".
- Press the On/Off button (⏻) to switch on the appliance, and the On/Off indicator lights up.
- Press the desired cooking mode button, the corresponding indicator lights up and the induction cooker starts working in the selected mode.
- Press the Timer button once or more times to select the desired cooking time.
- When the time has elapsed, the induction cooker turns off automatically.

Note

- After the timer is set, you can press the Timer button (⌚) repeatedly until the timer indicator is off to cancel the timer.

5 Cleaning

Unplug the appliance after the fan stops working and let it cool down. Clean the appliance with a damp cloth and, if necessary, with some mild cleaning agent.

6 Environment

Do not throw away the appliance with the normal household waste at the end of its life, but hand it in at an official collection point for recycling. By doing this, you help to preserve the environment.

7 Guarantee and service

If you need service or information or if you have a problem, please visit the Philips website at www.philips.com or contact the Philips Consumer Care Centre in your country (you will find its phone number in the worldwide guarantee leaflet). If there is no Consumer Care Centre in your country, go to your local Philips dealer.

8 Troubleshooting

If your induction cooker does not function properly or if the cooking quality is insufficient, consult the table below. If you are unable to solve the problem, contact a Philips service centre or the Consumer Care Centre in your country.

Problem	Solution
The On/Off button (⏻) does not respond.	There is a connection problem. Check if the induction cooker is connected to the mains and if the plug is inserted firmly into the wall socket
The appliance beeps continuously and then stops working.	You may have put unsuitable cookware on the cooking plate or you may have removed the cookware from the cooking plate during cooking. Make sure the cookware is made of steel, iron or aluminium with stainless steel cladding base and has a base diameter larger than 12cm. You may have placed the cookware outside of the cooking zone.

The cookware does not heat up to the required temperature.	The bottom of the cookware may not be flat. Use cookware with a flat bottom. If the problem still exists, take the appliance to your Philips dealer or a service center authorised by Philips.
The appliance stops working suddenly.	The temperature of the cookware is too high. Let the cookware cool down for a while.
The cooking temperature of the preset modes are too high or too low.	When the induction cooker is working in one of the preset modes, you may adjust the cooking temperature using the Increase (+) or Decrease (−) button.
When I press one of the cooking mode buttons, the light of the selected mode does not go on.	The light is defective. Take the appliance to your Philips dealer or a service centre authorised by Philips.
The fan works but the appliance has not started working.	You have to press a cooking mode button after you have pressed the On/Off (⏻) button. If you do not press a cooking mode button within one minute, the induction cooker will switch off and the fan continues to work for a while to cool down the appliance.
The 1600W indicator blinks and the appliance beeps.	The voltage is either too high or too low. Check if the voltage in your home is suitable for the induction cooker.
The 2000W indicator blinks and the appliance beeps.	The inner temperature of the appliance is too high. The appliance will start working again when it cools down.
The 800W indicator blinks and the appliance beeps.	IGBT sensor is in open circuit or short circuit state. Take the appliance to your Philips dealer or a service center authorised by Philips.
The 1200W indicator blinks and the appliance beeps.	The main sensor is in open circuit or short circuit state. Take the appliance to your Philips dealer or a service center authorised by Philips.
The 400W and 1200W indicators blink at the same time and the appliance beeps.	The main sensor has malfunction. Take the appliance to your Philips dealer or a service center authorised by Philips.
All power indicators blink at the same time and the appliance beeps.	The buttons have malfunction. Take the appliance to your Philips dealer or a service center authorised by Philips.

繁體中文

1 屬於您的電磁爐

恭喜您購買 Philips 產品，歡迎來到 Philips 世界！要享受 Philips 為您提供的全面支援，請在以下網站 www.philips.com/welcome 註冊您的產品。

2 包裝盒內含物件

電磁爐主裝置 鍋子
重要資訊手冊 用戶手冊
保用證

概覽

①	電磁爐板	④	控制板面
②	烹飪區	⑤	排氣口
③	進氣口	⑥	電源線

控制鍵概覽

⑦	定時功能指示燈	⑫	保溫模式
⑧	定時功能按鈕	⑬	火鍋模式
⑨	烹飪火力	⑭	增加按鈕
⑩	煎炒模式	⑮	減少按鈕
⑪	開 / 關按鈕		

3 首次使用前

拆去電磁爐的所有包裝材料。

準備使用

- 將電磁爐放置於穩固、平坦的水平表面上。
- 確保機器周圍 10 公分內沒有其他物體，以防機器過熱。
- 烹飪時請將廚具放置在烹飪區內。
- 確保您使用的廚具種類和大小正確。（請見下表）

建議的廚具種類和大小

材質	底部使用鐵或電磁不銹鋼製成的廚具
外形	有平底廚具
大小	底部直徑介於10至23公分的廚具，依烹飪模式而定。

4 使用電磁爐

烹飪模式有三種：火鍋（燉）、保溫（暖）和煎炒（炒）。

- 遵照「準備使用」裡的步驟。
- 按開 / 關按鈕 (⏻) 開啟產品，開 / 關指示燈便會亮起。
- 按所需的烹飪模式按鈕，相應的指示燈便會亮起，而電磁爐開始以所選模式運作。
- 烹飪完畢後，按開 / 關按鈕 (⏻) 關閉本產品。
- 等風扇停止運轉後，拔除電磁爐的插頭。

提示

- 烹飪時，您可以按增加按鈕 (+) 或減少按鈕 (−)，更改火力等級。

烹飪火力

請參閱下表，查看不同烹飪模式的烹飪火力。

烹飪模式	烹飪火力
煎炒模式 (炒)	400瓦 - 2000瓦
火鍋模式 (燉)	400瓦 - 2000瓦
保溫 (暖)	400瓦 - 2000瓦

使用定時功能

您可以使用定時功能按鈕 (⌚)，選擇您想產品在不同烹飪模式下的運作時間。

- 遵照「準備使用」裡的步驟。
- 按開 / 關按鈕 (⏻) 開啟產品，開 / 關指示燈便會亮起。
- 按所需的烹飪模式按鈕，相應的指示燈便會亮起，而電磁爐開始以所選模式運作。
- 按定時功能按鈕一次或多次以選擇所需的烹飪時間。
- 時間過去之後，電磁爐會自動關閉。

提示

- 設定定時功能後，您可重複按定時功能按鈕 (⌚)，直至定時功能指示燈熄滅以取消定時功能。

5 清潔

風扇停止運轉後，拔除本產品的插頭，讓產品冷卻。用濕布清潔本產品，必要時請使用溫和的清潔劑。

6 環境

請勿在本產品使用壽命結束後當作一般家庭垃圾廢棄，應交給官方回收站作循環再用。這樣做有助保護環境。

7 保障及服務

如果您需要資料或有疑問，請前往 Philips 網站 www.philips.com，或聯絡您的國家的 Philips 顧客服務中心（您會在全球保障小冊子上找到其電話號碼）。如果您的國家沒有顧客服務中心，請前往當地的 Philips 經銷商。

8 疑難排解

若電磁爐無法正確運作，或電磁爐烹飪效率不佳，請參照下表。若您無法解決問題，請聯絡飛利浦服務中心或您所在國家的顧客服務中心。

問題	解決方案
開/關按鈕 (⏻) 沒有反應。	連接有誤。檢查電磁爐是否有連接主電源，插頭和插座是否有鬆脫。
產品持續發出嗶聲，然後停止運作。	您可能在電磁爐板上放置不適合的廚具，或者您在烹飪期間從電磁爐板移走了廚具。確保廚具使用鋼、鐵或鋁製成，備有不銹鋼電鍍的底部，而底部直徑超過12公分。 您或許將廚具放在烹飪區之外。
廚具沒有加熱到所需溫度。	廚具底部或許並不平坦。使用有平底的廚具。如果問題仍然持續，請將產品拿至飛利浦經銷商或飛利浦認可的服務中心。
產品突然停止運作。	廚具溫度過高。讓廚具冷卻一會。
預設模式的烹飪溫度過高或過低。	電磁爐在其中一種預設模式下運作時，您可使用增加 (+) 或減少 (−) 按鈕調整烹飪溫度。
按下其中一個烹飪模式按鈕後，已選模式的燈沒有亮起。	指示燈損壞。請將產品拿至飛利浦經銷商或飛利浦認可的服務中心。
風扇有運作，但產品沒有開始運作。	按開/關 (⏻) 按鈕後，需要按烹飪模式按鈕。如果一分鐘內沒有按烹飪模式按鈕，電磁爐將會關閉，而風扇會繼續運作一會以冷卻產品。
1600瓦指示燈閃爍，而產品發出嗶聲。	電壓過高或過低。檢查家中的電壓是否適合電磁爐。
2000瓦指示燈閃爍，而產品發出嗶聲。	產品的內部溫度過高。產品冷卻後，將會重新開始運作。
800瓦指示燈閃爍，而產品發出嗶聲。	IGBT感應器處於開放電路或斷路狀態。請將產品拿至飛利浦經銷商或飛利浦認可的服務中心。
1200瓦指示燈閃爍，而產品發出嗶聲。	主感應器處於開放電路或斷路狀態。請將產品拿至飛利浦經銷商或飛利浦認可的服務中心。
400瓦及1200瓦指示燈同時閃爍，而產品發出嗶聲。	主感應器出現故障。請將產品拿至飛利浦經銷商或飛利浦認可的服務中心。
所有電源指示燈同時閃爍，而產品發出嗶聲。	按鈕出現故障。請將產品拿至飛利浦經銷商或飛利浦認可的服務中心。