

Always there to help you

Register your product and get support at
www.philips.com/support



HTL1180B



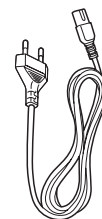
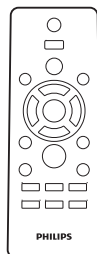
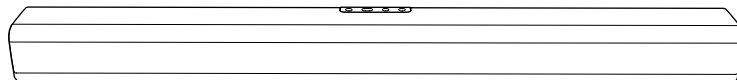
Quick start guide

PHILIPS



EN Before using your product, read all accompanying safety information

ZH-TW 使用您的產品前，請先閱讀所有附隨的安全資訊



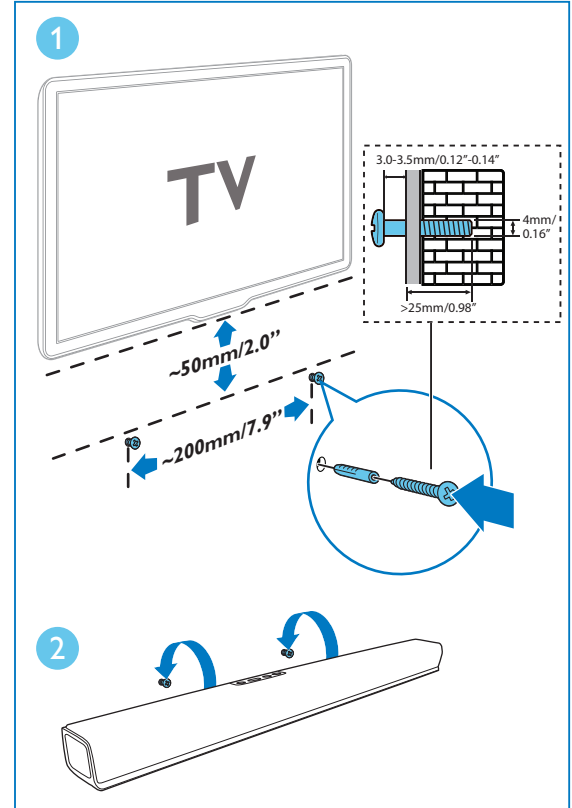
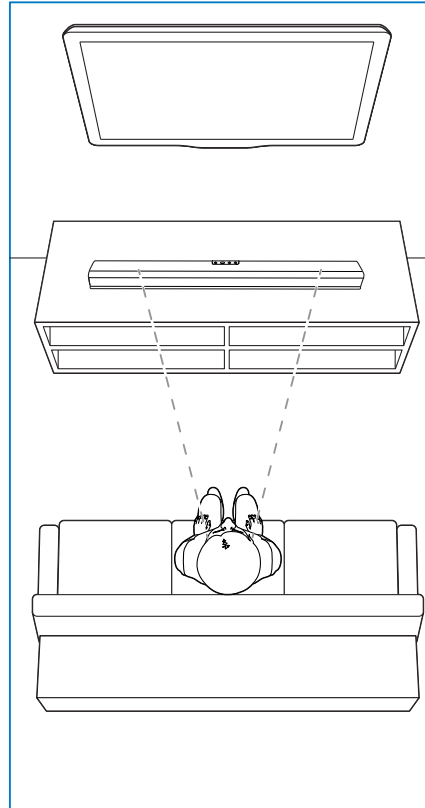
Power Cord



1

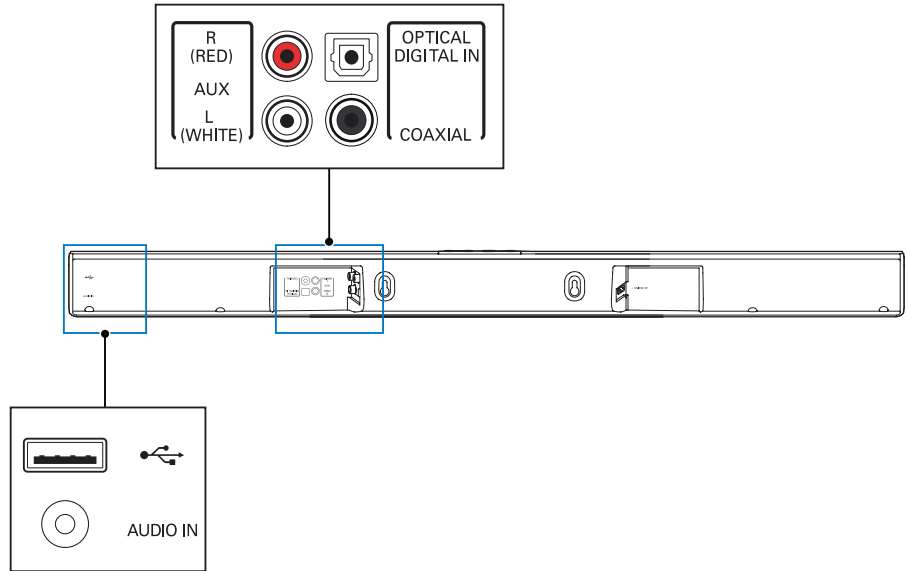
EN Position this product
Wall mount this product
(optional)

ZH-TW 放置本產品
壁掛本產品 (自選)



2

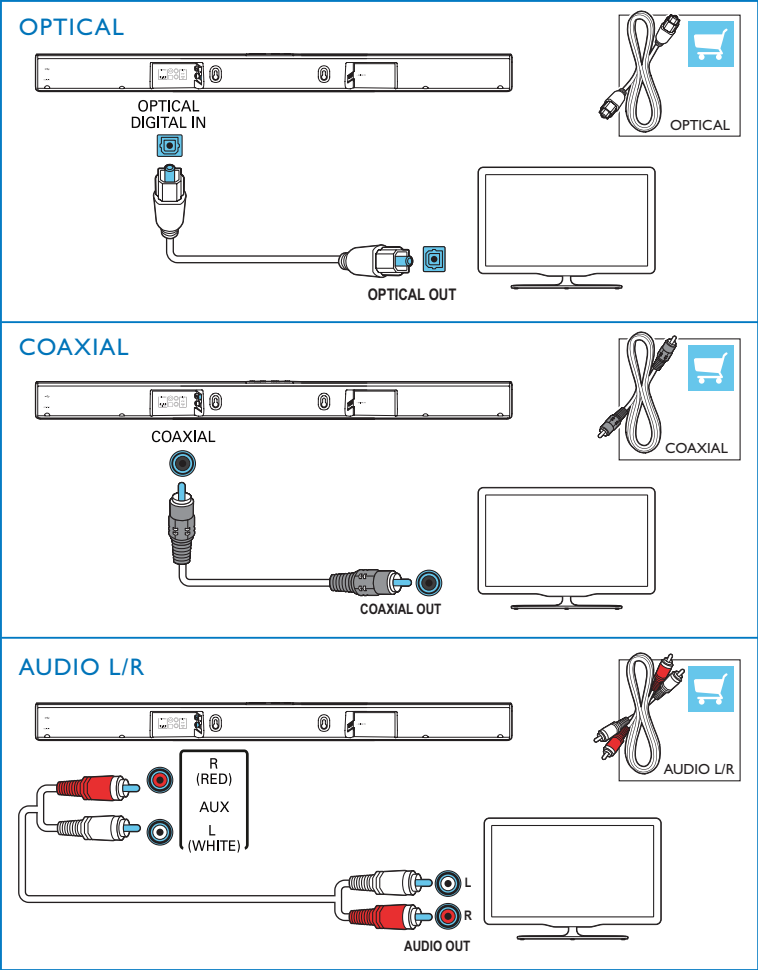
EN Connect this product
ZH-TW 連接本產品



3

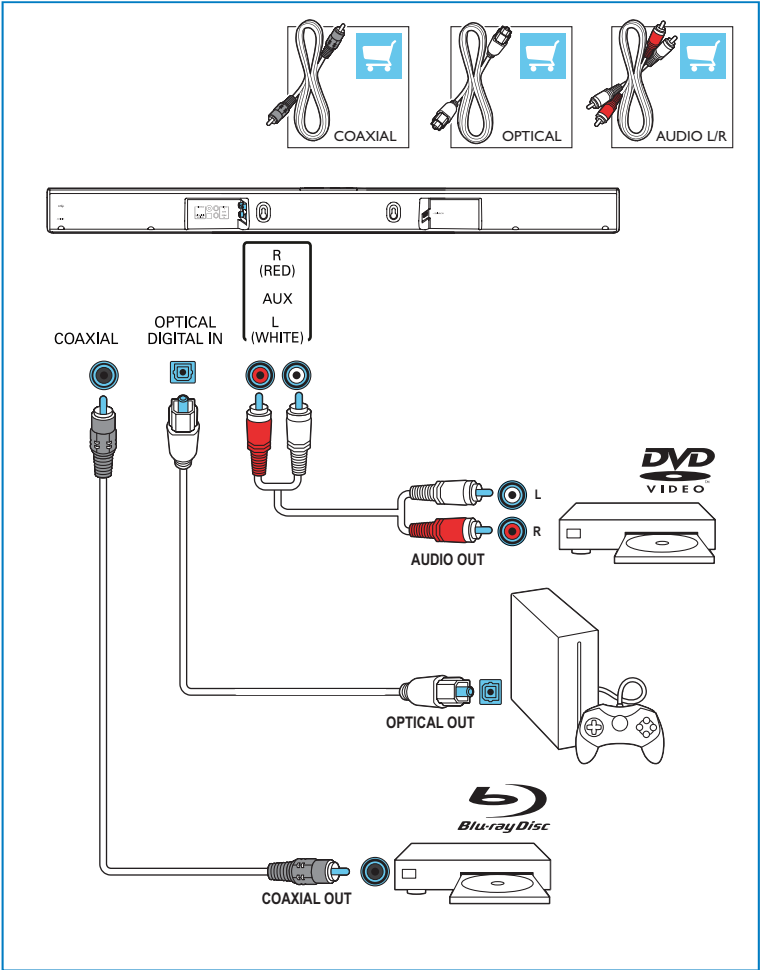
EN Hear audio from TV in one of the following ways
(Mute your TV)

ZH-TW 用下列其中一種方式聆聽電視的音訊
(將電視靜音)



4

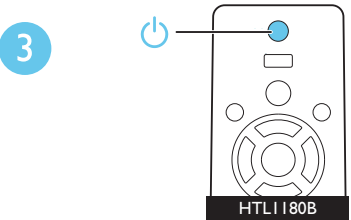
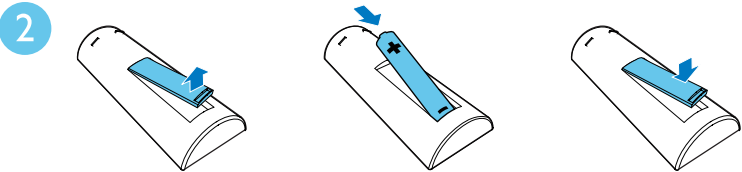
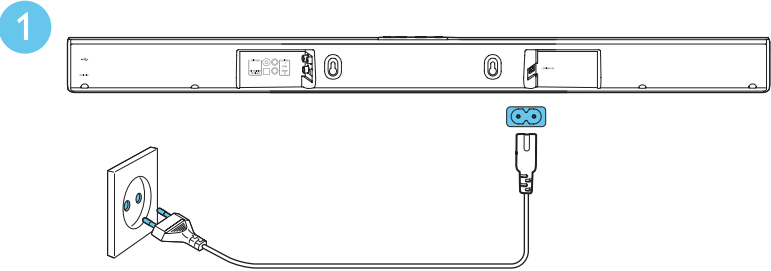
EN Enjoy audio from your devices
ZH-TW 享受裝置的音訊



5

EN Switch on this product

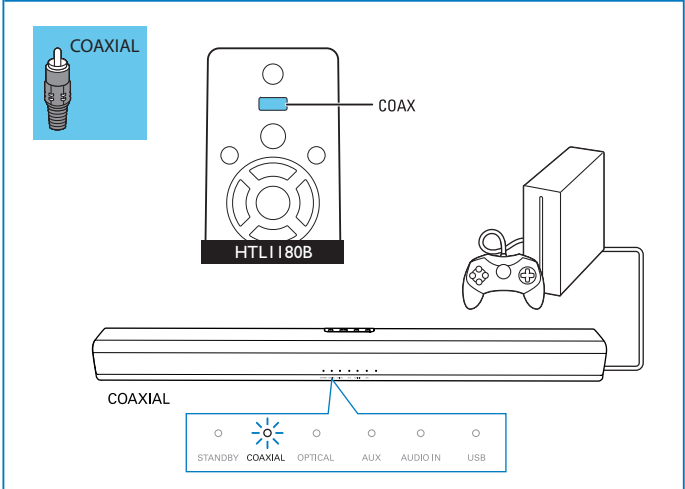
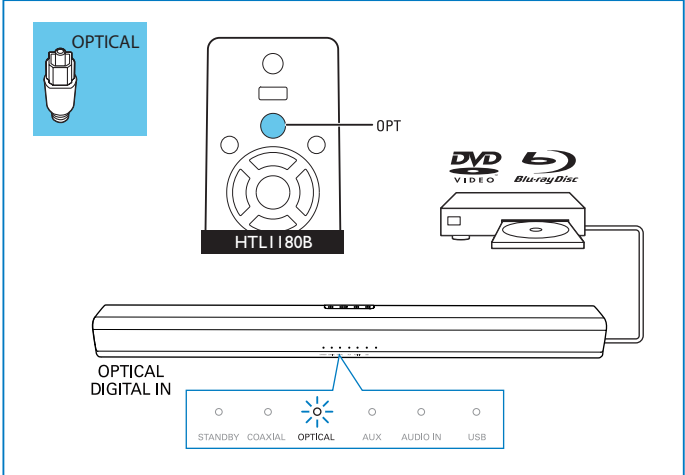
ZH-TW 啟動本產品

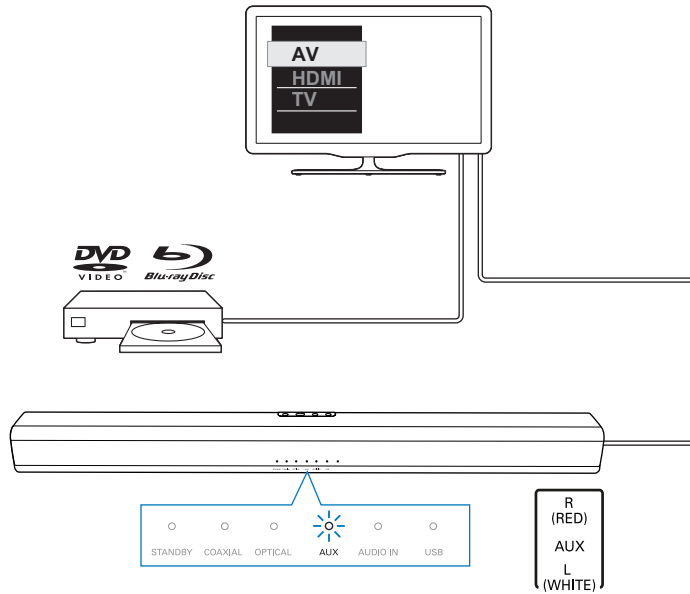
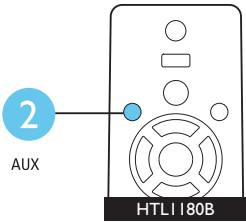
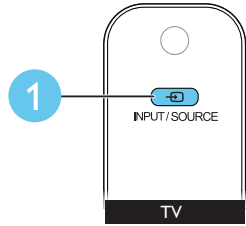
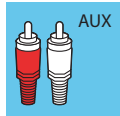


6

EN Select the correct audio source

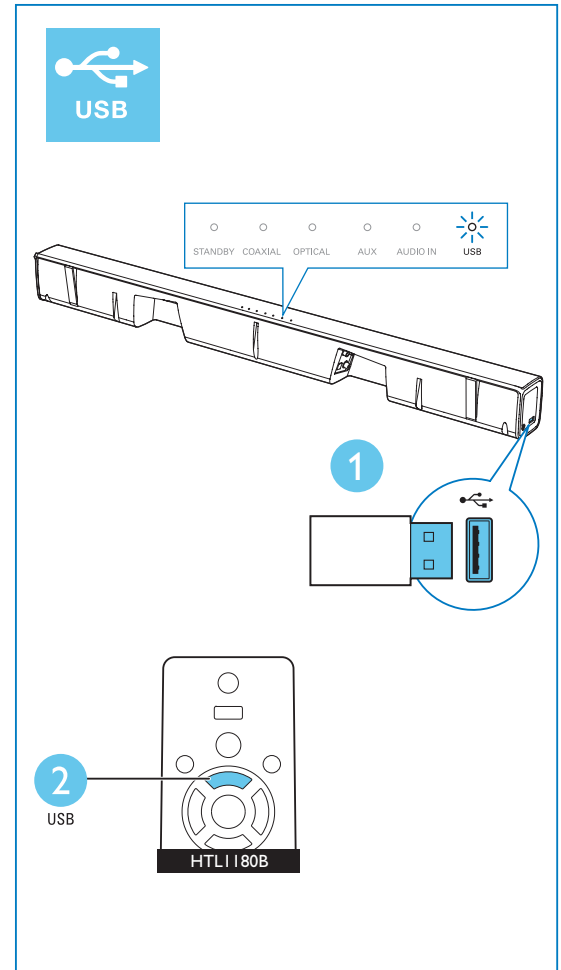
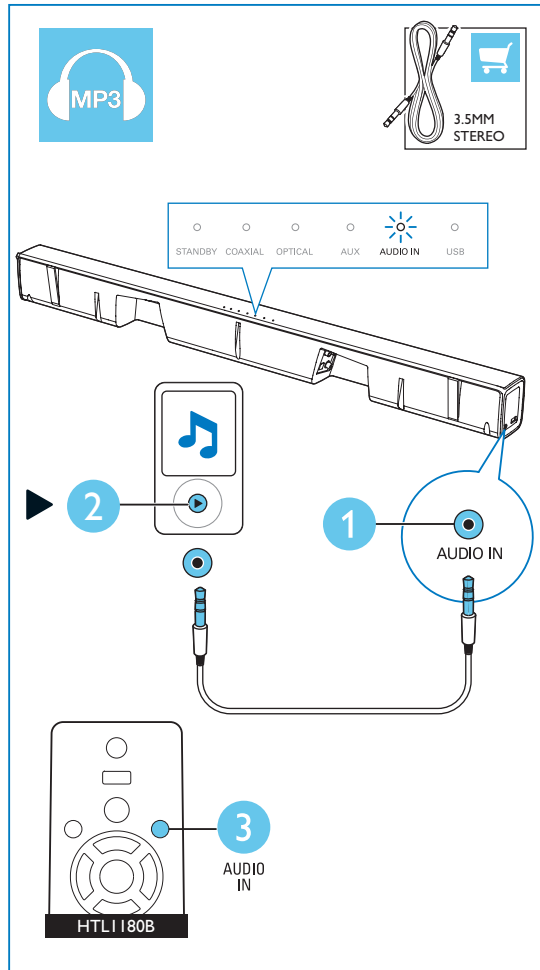
ZH-TW 選取正確的音訊輸入





7

EN Play other devices
ZH-TW 播放其它裝置





EN For more information about using this product, visit www.philips.com/support

ZH-TW 如果要瞭解產品的更多資訊，請瀏覽 www.philips.com/support



www.philips.com/support



Manufactured under license from Dolby Laboratories. Dolby and the double-D symbol are trademarks of Dolby Laboratories.



Specifications are subject to change without notice
2015 © Gibson Innovations Limited. All rights reserved.
This product has been manufactured by, and is sold under the responsibility of Gibson Innovations Ltd.,
and Gibson Innovations Ltd. is the warrantor in relation to this product.
Philips and the Philips Shield Emblem are registered trademarks of Koninklijke Philips N.V. and are used
under license from Koninklijke Philips N.V.

HTL1180B_96_UM_V1.0

