

SyncVision[®]

Precision Guidance



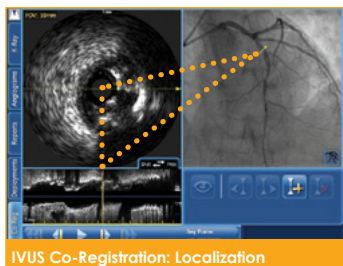
SYNCSVISION[®]
KNOW WHERE YOU ARE

Streamlines Lesion Assessment

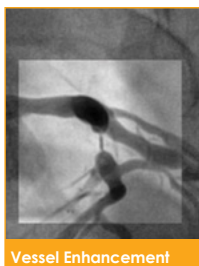
Simplifies Vessel Sizing

Enables Precise Therapy Delivery

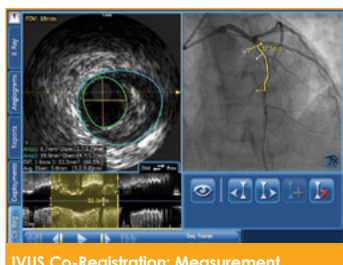
VOLCANO
PRECISION GUIDED THERAPY



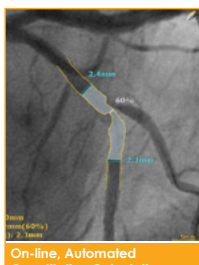
IVUS Co-Registration: Localization



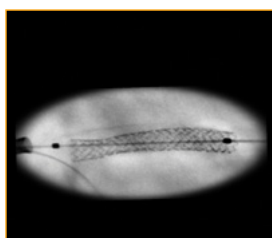
Vessel Enhancement



IVUS Co-Registration: Measurement



On-line, Automated Quantitative Calculation



Device Enhancement



Device Motion Indication

Streamlines Lesion Assessment

- Localization of IVUS images with angio co-registration is designed to help reduce the risk of geographic miss, which study data suggests may occur in 66.5% of PCIs.¹
- Angio+™ Vessel Enhancement tool provides clarity visualizing vessels which may include tortuous or overlapping vessels and highly stenosed lesions, potentially reducing the number of required views during diagnosis or therapy.

Simplifies Vessel Sizing

- IVUS co-registration provides easy length measurement with manual IVUS pullback and area / diameter measurements for accurate stent sizing.
- Angio+ Quantitative Coronary Analysis automatically calculates lumen dimensions and stenosis in real time.

Enables Precise Therapy Delivery

- Angio+ real-time Image Stabilization and Device Enhancement enable precise therapy delivery
- With IVUS, you can confirm “healthy-to-healthy” landing zones.²

1. Costa et al. Impact of Stent Deployment Procedural Factors on Long-term Effectiveness and Safety of Sirolimus-Eluting Stents (Final results of the Multicenter Prospective STLLR Trial). Am J Cardiol 2008 Jun 15; 101(12):1704-11
2. Witzensbichler B et al. Relationship Between Intravascular Ultrasound Guidance and Clinical Outcomes After Drug-Eluting Stents: The ADAPT-DES Study. Circulation 2014 Jan; 129,4:463-470

Specifications

POWER REQUIREMENTS

System Input	100V-120V, 50/60Hz; 220-240V, 50/60Hz; 600 VA
Workstation	100-240V, 50/60Hz; 250 VA
Monitor	100-240V, 50/60Hz; 93 VA

DIMENSIONS

Workstation	H: 16.5", 39.6 cm, W: 6.75", 16.2 cm, D: 21.25", 51 cm
Bedside Joystick	H: 1.5", 3.7 cm, W: 4.2", 10.7 cm, D: 3", 7.6 cm
Monitor	H: 15-19", 41-56 cm, W: 15.8", 40.2 cm, D: 10", 24.7 cm

INPUTS

Angio System Video Output	Analog or Digital
IVUS System	Volcano s5™ /CORE® Systems, SW Version 3.2.2 and Above
IVUS Catheter	Eagle Eye® Platinum Catheters
ECG Signal	Contact your local Volcano representative for compatibility

ORDERING INFORMATION

SyncVision System	Sync002
-------------------	---------



PRECISION GUIDED THERAPY

Volcano Corporation

Corporate Headquarters
3721 Valley Centre Drive, Suite 500
San Diego, CA 92130 USA
Phone: 800-228-4728
Fax: 858-720-0325

Volcano Europe BVBA/SPRL

Europe Headquarters
Excelsiorlaan 41
B-1930 Zaventem Belgium
Phone: +32 2 679 1076
Fax: +32 2 679 1079

Volcano Japan Co., Ltd

Japan Headquarters
Mita NN Bldg. 24F
4-1-23, Shiba, Minato-ku, Tokyo
108-0014 Japan
Phone: +81 3 6414 8700
Fax: +81 3 6414 8701