



PHILIPS

Image guided therapy

Azurion

Accessories

With **Azurion**
performance and
superior care become one

Azurion accessories



Contents

- 4 Mattress
 - Long cardio mattress
- 5 Neuro mattress
 - Arm support board
- 6 Height-adjustable arm support
 - Set of elbow supports
- 7 Shoulder support board
 - Head support
- 8 Neuro head holder
 - Neuro wedge
- 9 Patient straps
 - Ratchet compressor
- 10 Peripheral X-ray filter
 - Drip stand
- 11 Table accessory rail (EU version)
 - Accessory rail + cable extension kit
- 12 Additional table accessory rail (US version)
 - Table base accessory rail
- 13 Table accessory rail clamps
 - Table clamp
- 14 Handgrip and clamp set
 - Cerebral filter
- 15 Radiation shield
 - Table-mounted radiation shield
- 16 Exam light
 - Intercom (control room)
- 17 Pan handle
 - DVD writer



Mattress (blue and yellow)

FCV0246

Key benefits:

- Enhances patient comfort
- Adapts to the shape of the patient's body

To enhance patient comfort, the inflatable, latex free mattress is placed on the tabletop for every procedure. It is 7 cm thick and adapts to the shape of the patient's body. The pressure within the mattress is evenly distributed so that it recovers its original shape quickly.

Dimensions of the mattress:

Length:	2100 mm
Width:	500 mm
Height:	70 mm
Radius:	150 mm



Long cardio mattress (blue and yellow)

FCV0510

Key benefits:

- Enhances patient comfort
- Adapts to the shape of the patient's body

To enhance patient comfort during cardio exams, the inflatable, latex free mattress can be used. It is extra-long to accommodate the patient on the tabletop, and adapts to the shape of the patient's body. The pressure within the mattress is evenly distributed so that it recovers its original shape quickly.

Dimensions of the mattress:

Length:	3165 mm
Width:	500 mm
Height:	70 mm
Radius:	150 mm

Neuro mattress (blue and yellow)

FCV0247

Key benefits:

- Enhances patient comfort
- Adapted shape at the head end
- Conforms to the shape of the patient's body

To enhance patient comfort during neuro procedures, the inflatable, latex free mattress is placed on the tabletop for every procedure. The shape is adapted at the head end to accommodate neuro accessories and allow free access to the patient's head. It is 7 cm thick and conforms to the shape of the patient's body. The pressure within the mattress is evenly distributed so that it recovers its original shape quickly.

Dimensions of the mattress:

Length:	2000 mm
Width:	440/500 mm
Height:	70 mm
Radius:	150 mm



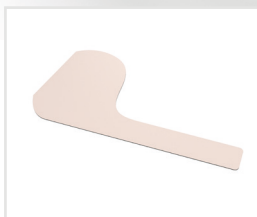
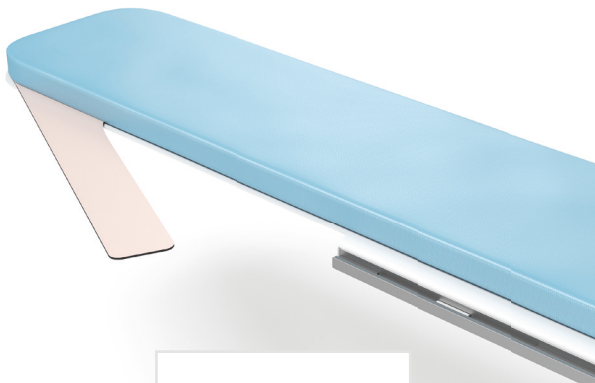
Arm support board

FCV0258

Key benefits:

- Enhance patient comfort during catheter usage

Arm support board is used to support the patient's arm during brachio-cephalic catheterization procedures. It can be attached to the table top. The support is made of X-ray transparent material and includes a mattress pad to enhance patient comfort.





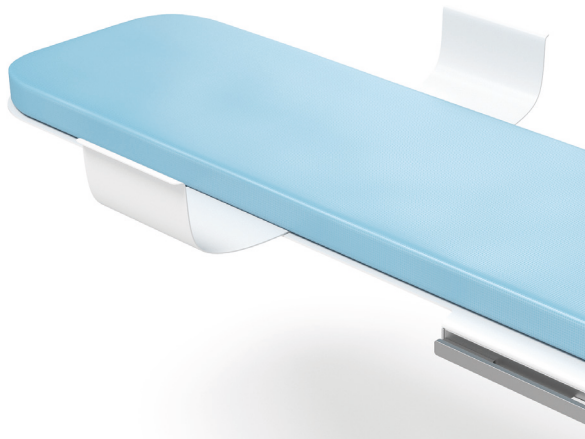
Height adjustable arm support

NCVD092

Key benefits:

- Enhance patient comfort during catheter usage

This arm support is used to support the arm during venous digital subtraction angiography (DSA) in order to manage blood flow. It can be attached to the table top. The support is made of X-ray transparent material and includes a mattress pad to enhance patient comfort. The fixation clamp and pivot mechanism are not made of X-ray transparent material.



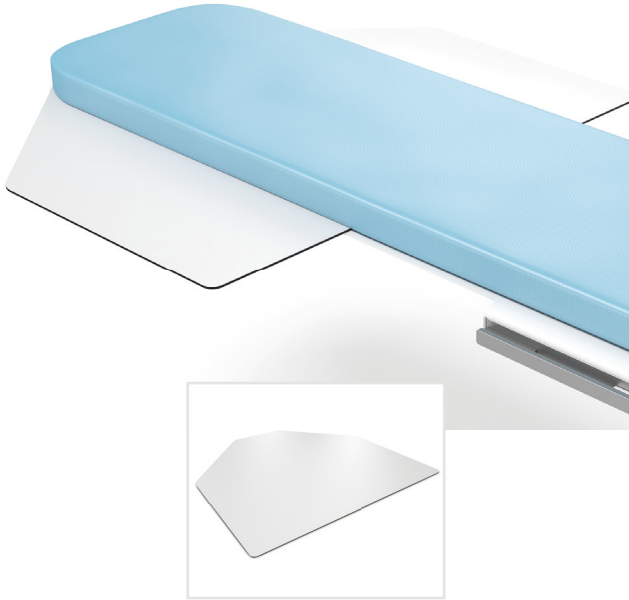
Set of elbow supports

FCV0248

Key benefits:

- Enhances comfort for patient's arms

These elbow supports are designed to support the patient's elbows in order to place the arms comfortably during examinations and also to prevent the patient's arms from hanging over the side of the table.



Shoulder support board

NCVD093

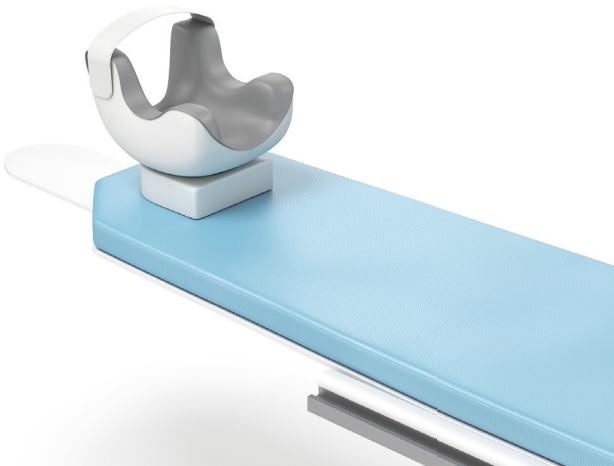
Key benefits:

- Enhance patient comfort during catheter usage

To support both the arms of the patient during brachio-cephalic catheterization procedures, the shoulder support board is used. It can be attached to the tabletop. It also provides room for placing catheterization instruments. The support is a flat radio translucent board that is placed under the patient, and part of it protrudes to the left or right side of the tabletop to support the arm.

Specifications

Size:	100 x 85 cm
Material:	carbon-fiber reinforced material



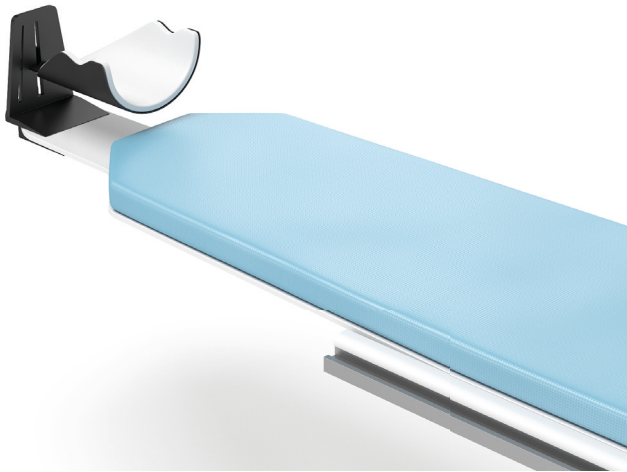
Head support

FCV0251

Key benefits:

- Enhance patient comfort
- Reduce image artifacts

During procedures, patient movements can cause imaging artifacts. The head support is used to keep head movements to a minimum. It is designed to enhance patient comfort during the examination and reduce motion artifacts on images.



Neuro head holder

FCV0706

Key benefits:

- Enhance patient comfort
- Reduce image artifacts

During procedures, patient movements can cause imaging artifacts. The neuro head holder is designed to position and immobilize the head, improve patient comfort and image quality. It can be rotated, angulated, and adjusted in height to the desired position. The unique clamp assembly enables the patient's head to be turned left or right without changing the height, to facilitate easy patient transfer. The aluminum equivalence of the neuro head holder is between 1.0 and 0.5 mm for excellent X-ray translucency.

Specifications

The neuro head holder consists of:

Head support

Inlay

2 head straps

The neuro head holder is compatible with all X-ray system tables and table tops (excluding OR tables)



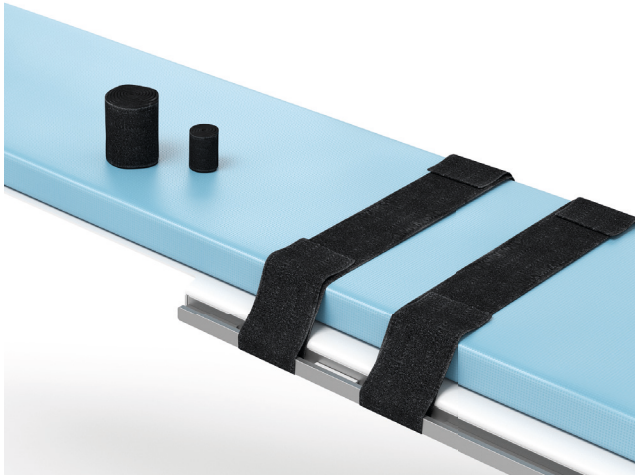
Neuro wedge

FCV0272

Key benefits:

- Enhance neuro image quality

The neuro wedge is used to position the head in the iso-center of the imaging field during neuro radiology examinations.



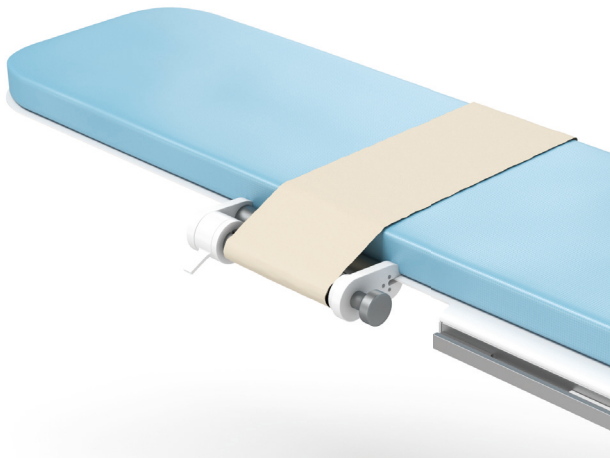
Patient straps

FCV0250

Key benefits:

- Prevent the patient from sliding during table tilt/cradle movements

During table tilt/cradle movements, the patient straps prevent the patient from sliding off the table. If required, the patient straps can be washed and/or sterilized.



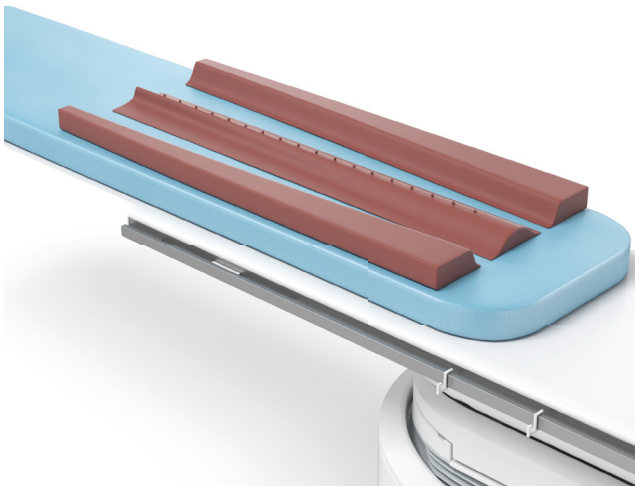
Ratchet compressor

NCVA099

Key benefits:

- Decrease motion artifacts on images

Patient movement can cause motion artifacts in images. The ratchet compressor is used to immobilize the patient on the table and thereby decrease motion artifacts on images. It can be easily attached to the side of the table. The ratchet winding mechanism is attached to one side of the table. The quick release lever lets you easily pass the compression band over the patient and under the table for symmetrical compression.



Peripheral X-ray filter

NCVA101

Key benefits:

- Obtain uniform density of lower peripheral areas

To help clinicians obtain consistent images of lower peripheral anatomy, this option provides a set of flexible X-ray filters. They provide uniform density in angiographic examinations of the lower peripheral area.



Drip stand

FCV0257

Key benefits:

- Support infusion bags during examinations

The drip stand is provided to hold two infusion bags next to the examination table for patients or examinations that require fluids. The drip stand can be attached to the rail accessory clamp and adjusted to the necessary height.

Table accessory rail (EU version)

FCV0816



Key benefits:

- Extend the length of the OP rail to fit cardio and neuro tabletops
- Position operating modules and/or accessories conveniently
- Work comfortably at the head end of the table

To provide more flexibility when working at the head end of the cardio and neuro tabletops, the auxiliary OP (operation profile) rail can be extended by 500 mm with the additional OP rail. This rail is used to position operating modules and/or accessories closer to the head end of the tabletop. This allows the user to work comfortably when performing pacemaker implantations, venous jugular catheter insertions, and other procedures near the patient's head.

Specifications

The additional OP rail can be mounted on either side of the tabletop where no OP rails are mounted

The OP rail has the same profile and dimensions as the current standard OP rail

The maximum load (downwards) on the additional OP rail is 100 N ($F=100N$), determined by the tabletop of the patient table

The maximum mechanical moment on the additional OP rail is 40Nm downwards and 20Nm upwards (this is limited by the tabletop of the patient table)



Accessory rail + cable extension kit*

FCV0817

Key benefits:

- Extend the length of the OP rail to fit cardio and neuro tabletops
- Position operating modules and/or accessories conveniently
- Work comfortably at the head end of the table

To provide more flexibility when performing procedures, the additional OP rail accessory with cable extension kit is equipped with everything needed to mount operating modules and/or accessories next to the tabletop.

The additional OP rail can be mounted on either side of the tabletop where no OP rails are mounted. The additional OP rail is compatible with AD5 and AD7 Table (cardio and neuro) patient tabletops. The OP rail has the same profile and dimensions as the current standard OP rail. The maximum load (downwards) on the additional OP rail is 100 N ($F=100N$), the maximum mechanical moment on the additional OP-Rail is 40Nm downwards and 20Nm upwards, determined by the tabletop of the patient table.

Specifications

This option includes the following items:

One additional OP rail (mechanical) of 500 mm

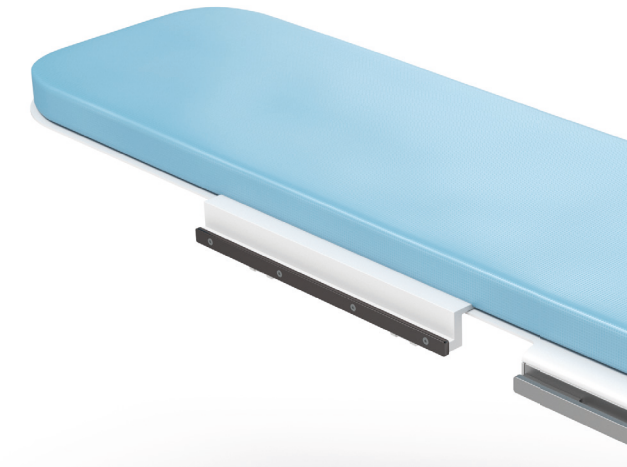
Cable extension set for OP rail

Extension cable for control module, 1.3 meters long

One connection box to connect the user interface cables to the module cables

An extension for the table op rail of 500 mm

* Image of cable extension kit is not available



Additional table accessory rail (US version)

FCV0815

Key benefits:

- Position operating modules and/or accessories conveniently
- Work comfortably at the head end of the table

Work comfortably at the head end of the table

To provide more flexibility when working at the head end of the table, the auxiliary OP (operation profile) rail can be used to position operating modules and/or accessories closer to the head end of the tabletop. This allows the user to work comfortably when performing pacemaker implantations, venous jugular catheter insertions, and other procedures near the patient's head. This version of the OP rail is designed for use in the US only.

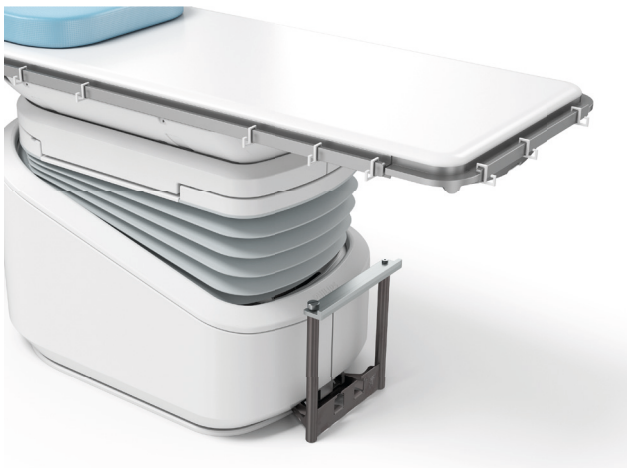


Table base accessory rail

NCVC425

Key benefits:

- Position operating modules and/or accessories conveniently
- Work comfortably at the head end of the table

To provide more flexibility when working at the head end of the table, the auxiliary OP (operation profile) rail can be used to position operating modules and/or accessories closer to the head end of the tabletop. This allows the user to work comfortably when performing pacemaker implantations, venous jugular catheter insertions, and other procedures near the patient's head.

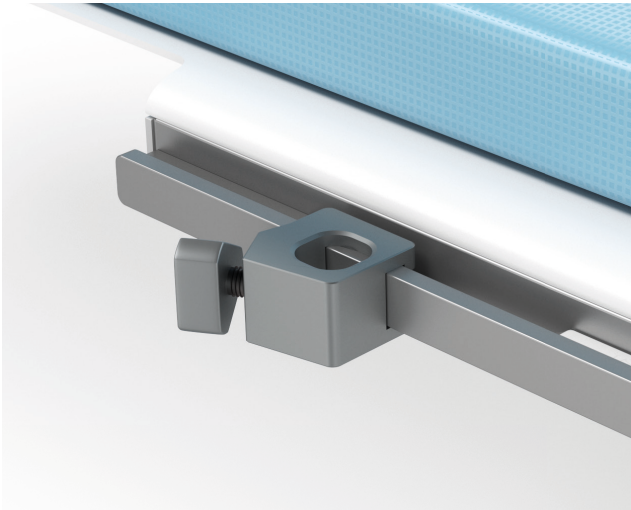


Table accessory rail clamps

FCV0256

Key benefits:

- Position accessories conveniently

During surgical and interventional procedures, it is sometimes useful to attach accessories to the auxiliary OP (operation profile) Rail. A set of three OP accessory rail clamps can be attached to the table. Accessories, such as a retractor, sheet holder, and others can be inserted and secured in the hole of the clamps. This gives the user convenient access to accessories as they are working.

Specifications

Compatible with both Angio Diagnost 5 and Angio Diagnost 7 table

Set of 3 clamps

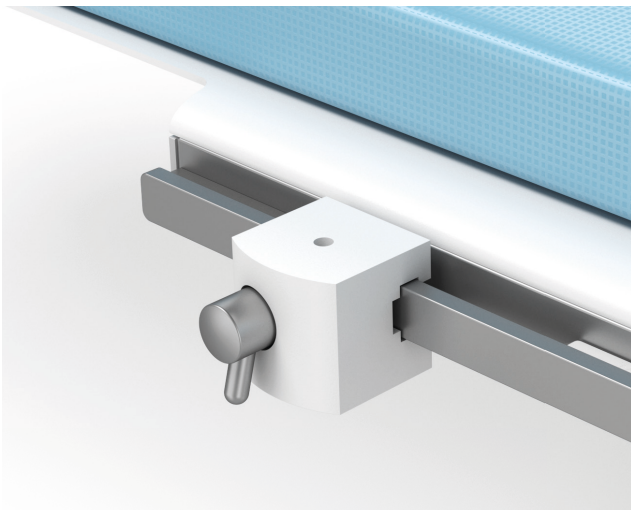


Table clamp

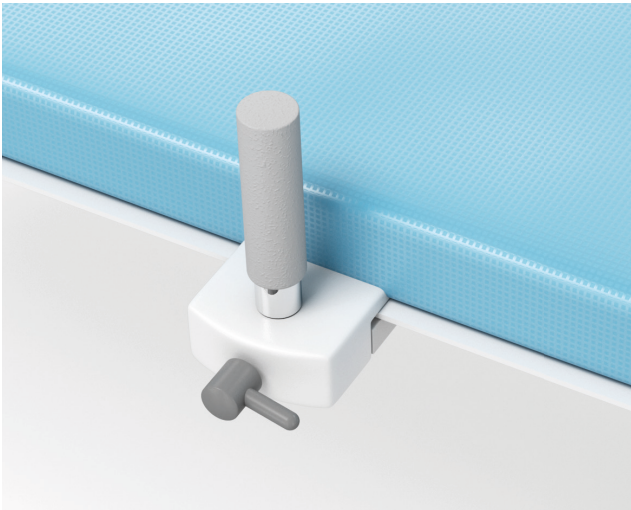
FCV0249

Key benefits:

- Easily mount accessories on patient table

Table top clamp for mounting on CV patient table. The table clamp is attached to the sides of the tabletop and is used to mount accessories on the tabletop.

Quantity: 1x



Handgrip and clamp set

FCV0252

Key benefits:

- Enhance patient comfort and safety

During procedures, two handgrips are available to enhance patient safety and comfort. They must be used as safety backups during a tilt/cradle movement. They can be attached to both sides of the tabletop using the tabletop accessory clamps.



Cerebral filter

FCV0271

Key benefits:

- Enhance neuro image quality

To improve image quality for cerebral angiography procedures, the cerebral filter assembly can be fitted to the X-ray tube housing. This prevents direct radiation from reaching the Flat Detector entrance screen and thus helps to improve the overall image quality.



Radiation shield

FCV0628

Key benefits:

- Transparent ceiling mounted shield can be easily positioned where needed
- Can be used in combination with lower body radiation shield

Radiation shields can provide substantial protection from scatter radiation during interventions. The ceiling mounted radiation shield is designed to protect the eyes and upper body of the physician and staff against scatter radiation during procedures. The transparent ceiling mounted shield is equipped with a two section suspension arm for mounting on the monitor ceiling carriage. This allows the shield to be easily positioned where needed. It can be used in combination with the table mounted lower body radiation shield.



Table mounted radiation shield

FCV0625

A table-mounted radiation shield for additional protection of physician and staff against scatter radiation

Key benefits:

- Transparent ceiling mounted shield can be easily positioned where needed
- Can be used in combination with lower body radiation shield

Radiation shields can provide substantial protection from scatter radiation during interventions. The table mounted radiation shield is designed to offer additional protection for the physician and staff against scatter radiation during procedures. The shield consists of two protective parts: a lower shield and an upper shield.

The shields can be mounted to either the right or left table accessory rails. Each radiation shield can be easily pivoted into the required working position and parked underneath the tabletop to facilitate patient preparation. The upper shield can be positioned upright to provide protection, or can be folded down for free access to the patient.

Specifications

Lower shield measuring 70 cm high x 80 cm wide curved shape, 0.5 mm Pb equivalence

Upper shield measuring 40 cm high x 50 cm wide 0.5 mm Pb equivalence

Mounting clamp

Docking device for wall mounting



Exam light

NCVA052

Key benefits:

- Provides high intensity illumination of treatment area
- Handgrip can be sterilized and used with a disposable cover

During cardio vascular and neuro vascular procedures, a bright light is sometimes used to better distinguish pathology. The exam light is designed to provide high intensity illumination at 60,000 Lux of the entire treatment area. Its handgrip allows the light beam to be easily positioned and focused. The handgrip can be removed for sterilization and used with a disposable cover.



Intercom

NCVA082

Key benefits:

- Enhance communication between exam room and control room

The remote intercom is used to communicate between the examination and control room. A separate intercom can be connected to the system and placed in the preferred working position in the control room or examination room. The listen function can be selected separately on each intercom. Activating the talk function on a selected intercom automatically disables this function on the other intercom.



Pan handle

NCVD094

Key benefits

- Flexible positioning during cardio and neuro procedures

The pan handle is an optional extension of the control possibilities for floating movements of the table top in cardio vascular and neuro systems. Flexible positioning during cardio and neuro procedures To allow more flexible positioning during cardio and neuro procedures, the pan handle option can be used to perform floating table movements. The pan handle provides a solid grip of the tabletop and can release and apply the tabletop brakes. It can be attached anywhere along the tabletop and accessory rails without affecting the floating range.

Specifications

Pan handle with cable and connector

Table-top attachment clamp

Accessory-rail attachment clamp



DVD writer

NCVD097

Key benefits

- Store images and information on DVDs for easy sharing

To provide flexible storage options, a DVD writer is available with the Philips X-ray system. Procedural images and information can be stored on DVDs and used for archiving, training and presentations.

Specifications

Export and import of X-ray images and X-ray runs to DVD and/or from DVD Pan handle with cable and connector

Part Number	Accessory Name	Azurion 3 F12 (722063)	Azurion 3 F15 (722064)	Azurion 7 F12 & 7 C12 (722078)
FCV0246	Mattress*	•	•	•
FCV0510	Long cardio mattress*	•	•	•
FCV0247	Neuro mattress*			•
FCV0258	Arm support board*	•	•	•
NCVD092	Height-adjustable arm support*	•	•	•
FCV0248	Set of elbow supports*	•	•	•
NCVD093	Shoulder support board*	•	•	•
FCV0251	Head support*	•	•	•
FCV0706	Neuro head holder*			
FCV0272	Neuro wedge*	•	•	•
FCV0250	Patient straps*	•	•	•
NCVA099	Ratchet compressor*	•	•	•
NCVA101	Peripheral X-ray filter	•	•	•
FCV0257	Drip stand*	•	•	•
FCV0816	Table accessory rail (EU version)*	•	•	•
FCV0817	Accessory rail + cable extension kit*	•	•	•
FCV0815	Additional table accessory rail (US version)*	•	•	•
NCVC425	Table base accessory rail *	•	•	•
FCV0256	Table accessory rail clamps *	•	•	•
FCV0249	Table clamp*	•	•	•
FCV0252	Handgrip and clamp set*	•	•	•
FCV0271	Cerebral filter			
FCV0628	Radiation shield	•	•	•
FCV0625	Table-mounted radiation shield	•	•	•
NCVA052	Exam light	•	•	•
NCVA082	Intercom	•	•	•
NCVD094	Pan handle*	•	•	•
NCVD097	DVD writer	•	•	•

* Not compatible with OR tables

