



**PHILIPS**

Prodiva 1.5T CX

dS TorsoCardiac

MR Coil

## Enhance your throughput

### Faster body exams with Breeze Workflow

The dS (dStream) TorsoCardiac Coil 1.5T is an integral part of the Breeze Workflow when used in combination with the dS NeuroVascularSpine (NVS) 1.5T coil. This thin, flat, lightweight anterior coil easily fits around each patient's body shape for fast, efficient, and comfortable scanning. Thanks to short cables, mini connectors and compact electronics, the anterior coil is ultralight. Breeze connect reduces the number of positioning steps and accelerates your daily exam workflow.

# dS TorsoCardiac

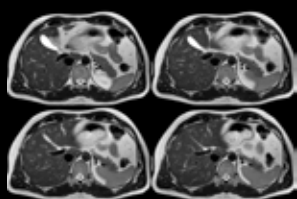
Coverage	42 cm (landscape mode) 55 cm (portrait mode) 70 cm*
Maximum number of elements	Up to 20 elements (8 anterior + 12 posterior elements) Up to 46* elements (16 anterior + 18 posterior + 12 NV elements)
Main applications	Thorax, abdomen, pelvis, lower peripherals and cardiac (combined with optional posterior NVS Spine coil). Body oncology
Data sampling	dStream digital broadband
Coil connection	dS Interface
dS SENSE parallel imaging	Up to 16
Weight	~1.30 kg



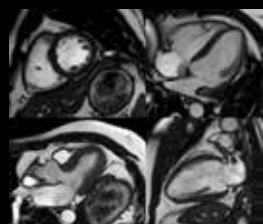
Together with the dS NVS coil, the dS TorsoCardiac coil delivers:

- Fast patient set up with Breeze Workflow thanks to ease of coil handling
- Easy exams with SmartSelect. It automatically detects and selects the right coil and coil elements to create the highest SNR for the selected area.
  - Simplifies patient positioning and coil placement
  - No need for manual coil or element selection
- Fast imaging with proven dS SENSE parallel imaging offering up to 16 times faster imaging in core applications

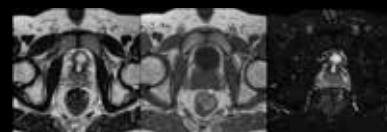
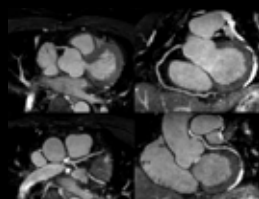
\*with optional second dS TorsoCardiac coil



**Anatomy: Abodomen**  
Sequence: Multivane XD  
Scan Time: 2.48m  
Thickness: 3mm



**Anatomy: Cardiac**  
Sequence: Cine bTFE



**Anatomy: Prostate**  
Sequence: T2/T1/SPAIR  
Scan Time: 3.17m/1.56m/3.21m  
Thickness: 3mm

© 2017 Koninklijke Philips N.V. All rights reserved.  
Specifications are subject to change without notice.  
Trademarks are the property of Koninklijke Philips N.V. or their respective owners.

4522 991 24291 \* SEP 2017



**How to reach us**  
[www.philips.com/healthcare](http://www.philips.com/healthcare)  
[healthcare@philips.com](mailto:healthcare@philips.com)

**Product information**  
[www.philips.com/mrcoils](http://www.philips.com/mrcoils)