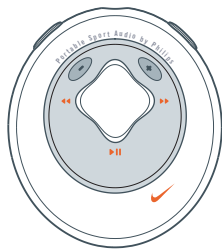


product manual



**psa[64**  
digital audio player



Portable Sport Audio by **Philips**

## 2 contents

<b>controls and connections, accessories</b>	4
<b>minimum computer system requirements</b>	6
<b>general information</b>	7
<b>power supply</b>	8
<b>power on/off, playback and pause ►  </b>	
<b>power saving mode</b>	9
<b>adjusting volume - / + and eq settings</b>	10
<b>selecting a different track</b>	
<b>fast searching ◀◀, ▶▶</b>	11
<b>button lock 🔒</b>	11
<b>remote control, clip magnets, armband</b>	12-14
<b>psa audio management</b>	
installing musicmatch jukebox	14-16
installing the psa drivers	17
connecting the psa to your computer	18
creating mp3 & windows media audio files from cds	19
playlist	20
download music to the psa from your computer	21-22
updating MUSICMATCH software, upgrading your audio player	23
<b>recovery</b>	24-25
<b>helpful tips</b>	26-27
<b>technical data</b>	28-29

**CAUTION**

*use this device according to the instructions that follow failure to do so could be hazardous to your health.*

*users of pacemakers or other implanted devices should consult their physician before using magnets or devices that may generate electro-magnetic interference.*

*this product complies with the radio interference requirements of the European Union.*

**environmental information**



we have reduced the packaging to its minimum and made it easy to separate into mono materials: PET, PS, PE.

your set consists of material which can be recycled if disassembled by a specialized company. please observe the local regulations to dispose of packaging, exhausted batteries and old equipment.

**copyright information**

in the U.K and certain countries, the copying of material protected by copyright may require the permission of the copyright holders.

## 4 controls and connections

- ① **▶||**  
switches the set on / off;  
starts / pauses playback
- ② **◀◀ / ▶▶**  
skips to the beginning of a  
previous/next track
- ③ **- / +**  
adjusts the volume
- ④ **indicator**  
lights up: red (battery low / power  
down), green (power up) or orange  
(button lock activated / pause mode)
- ⑤ **eq**  
enhance your listening experience.  
select from 4 equalizer settings.
- ⑥   
3.5 mm line out to connect
- ⑦  locks buttons to prevent them  
from being activated

- ⑧ **battery cover latch**  
uses 1 x AAA alkaline or Ni-MH bat-  
tery
- ⑨ **usb in**  
(found in the battery compartment)  
connect the supplied usb cable from  
here to the usb port of your computer

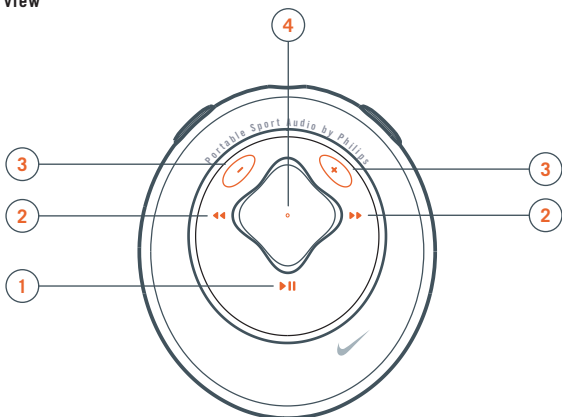
### supplied accessories

make sure these items are in the  
package. if any item is missing,  
please contact your dealer.

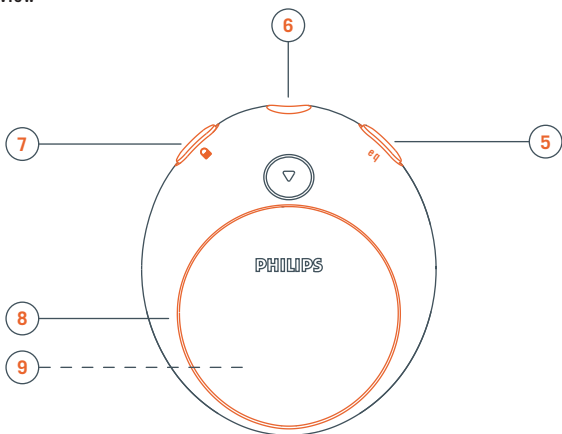
- one usb cable
- one psa software & user guide cd-rom
- one set of headphones, HJ020
- one remote control, AY3776
- one set of clip magnets
- one armband, AY3285
- one AAA alkaline battery

***the model & serial numbers are located inside the battery compartment.***

front view



rear view



## 6 minimum computer system requirements

### Windows system requirements

you need to have a usb port. computers that were upgraded from Win 95 to Win 98 may not have usb compatibility! check out the other requirements:

- Pentium® MMX 166MHz processor or better
- usb port with Windows 98 / Me / 2000 / XP
- 64MB ram
- 50MB ram drive space
- cd rom drive
- video display card
- sound card
- Microsoft Internet Explorer 5.0 or better, Netscape 4.0 or better, and internet access

### Mac system requirements

- G3 or better
- MacOS 8.6- 9.x

**psa[64 is a solid-state, portable, digital audio player:**

- plays mp3 & windows media audio files e.g. digitized and compressed cd tracks, tape tracks, audio books, newspapers, sound effects, etc., that are encoded into mp3 & windows media audio format.
- software upgradeable and will support future playback formats and software extensions that will be made available on **www.nike-philips.com**.
- will support for future digital rights management technology, including the Secure Digital Music Initiative (SDMI).

**take care when using headphones**

**hearing safety:** listen at a moderate volume. using headphones at high volume can impair your hearing.

**traffic safety:** do not use headphones while driving or cycling as you may cause an accident.

**general maintenance**

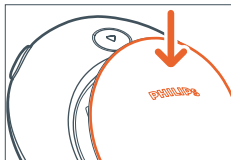
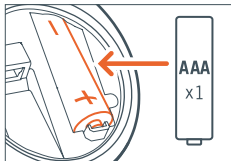
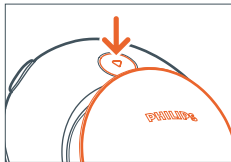
to avoid damage or malfunction:

- do not expose to excessive heat caused by heating equipment or direct sunlight.
- do not drop the psa or allow objects to fall on the psa.
- do not allow the psa to be submersed in water. do not expose earphone socket or battery compartment to water as water entering the set may cause major damage.
- do not use any cleaning agents containing alcohol, ammonia, benzene, or abrasives as these may harm the set.
- active mobile phones in the vicinity may cause interference.

## 8 power supply

### battery

- 1 press ▼ to open the battery cover latch and insert one AAA /UM4 /LRO3 battery (preferably alkaline) or Ni-MH rechargeable as indicated.
- 2 insert the lower edge of cover as shown to close the battery cover latch.



### beep beep! indication of empty battery

when the power level is almost empty, the psa64 will beep at intervals and the indicator lights up red. the psa will eventually switch itself off. always replace the battery after the first battery warning beep is heard.

### IMPORTANT!

- remove the battery if: battery drained or the psa will not be used for more than two weeks.
- **batteries contain chemical substances, so they should be disposed of properly.**



### power on and playback, ►►

press and hold ►► for 2 seconds to turn on.

- indicator: green light flashes briefly and playback starts automatically.
- psa beeps: if no content has been stored in the psa, the psa powers down.



### power off, ►►

press and hold ►► for 2 seconds to turn off.

- indicator: lights up red briefly.

### pause, ►►

during playback, press ►► to pause. press ►► again to resume playback.

- indicator: if psa on pause, orange light flashes.



### power-saving standby mode

the psa automatically switches off when playback is paused longer than 30 seconds and no buttons are pressed.

## 10 adjusting volume - / + and eq settings

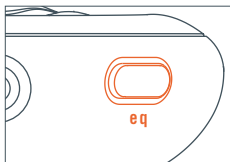
### volume

press - / + to decrease / increase the volume.



### eq sound options - *bring out the bass or top up on treble!*

press **eq** again and again to select your equalizer option.



### selecting a different track ◀◀, ▶▶

press ◀◀ / ▶▶ to select the desired track.

### fast searching within a track

during playback, press and hold ◀◀ / ▶▶ briefly.

psa plays track at high speed until the button is released.



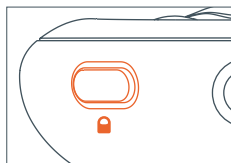
### using the button lock 🔒

🔒 deactivates the other buttons so they are not activated accidentally.

to activate / deactivate the button lock, press and hold 🔒 2 seconds.


indicator: lights up orange if button lock active, and when you attempt to press any other buttons.

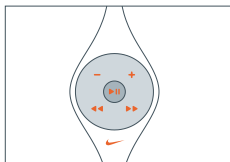
indicator: lights up green briefly if button lock deactivated.



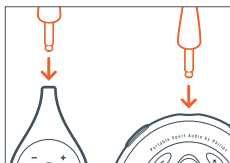
## 12 accessories

### remote control

the remote has 5 buttons ( - / +, ►||, ◀◀ / ▶▶ ) that function the same way that they do on the psa.  
even if the button lock  is activated the remote control will override.



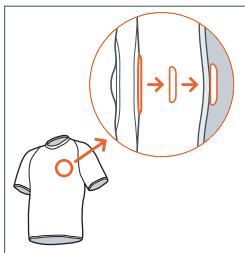
- 1 connect the remote control and headphones as shown.
- 2 adjust the volume on both the psa and remote control.



## clip magnets

wear your remote control and secure your headphone cord with these wearable magnets.

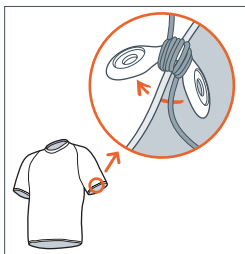
- 1 check the polarity of the 2 button magnets.  
insert the big button magnet underneath your garment.
- 2 clip the small button magnet on your outer garment. clip the remote control on top.
- 3 secure your headphone cord with the "butterfly" magnet clip.



### **WARNING:**

*KEEP OUT OF REACH OF SMALL CHILDREN TO AVOID CHOKING HAZARD.*

*KEEP THE MAGNETS AWAY FROM CREDIT CARDS, TAPES AND ANY ITEMS WHICH MAYBE SENSITIVE TO THE MAGNETS.*

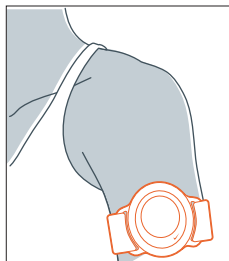
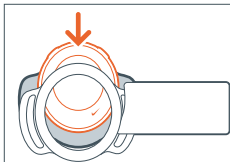


## 14 accessories, software: MUSICMATCH Jukebox

### armband

wear your digital audio player during sport activity by securing it to the supplied armband.

- 1 fit the psa into the rubber buckle, with the head-phone / remote socket aligned to the socket hole.
- 2 position the armband around your arm. thread the strap and fasten up for a snug fit.



### installing MUSICMATCH Jukebox

install MUSICMATCH Jukebox software to manage your music collection on your personal computer. MUSICMATCH Jukebox allows you to:

- convert cd music tracks to mp3 and windows media audio files
- create & save music playlists
- download mp3 and windows media audio files to the psa

- 1 insert the psa cd rom into your cd rom drive.



2 an introduction screen appears. select the language that suits you best (**english, français, italiano, deutsch** or **español**).

3 select your product.



## 16 software: MUSICMATCH Jukebox and device drivers

- 4 from the next screen, click **install MUSICMATCH jukebox** and follow the screen instructions to install.



- 5 click **Yes** on the screen to restart your computer when prompted. the software is now installed.



### installing the psa drivers

you must install the device drivers for your computer to recognize the psa player.  
follow these directions to install the drivers.

- 1 insert the psa cd rom into your cd rom drive.
- 2 an introduction screen appears. select the language that suits you best (**english, français, italiano, deutsch** or **español**).
- 3 select your product.
  - **for PC users:** the installation of required drivers will start automatically.
  - **for MAC users:** click **install drivers** (see screen below) and follow all the screen instructions to complete installation.

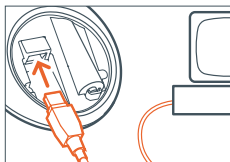


## 18 connecting the psa



### connecting the psa to your computer

check that the psa is loaded with a suitable battery (preferably fresh) before you start connecting.

- 1 connect the supplied usb cable to your computer's usb port.
- 2 press ▼ to open the battery compartment. connect the other end of the usb cable to **usb in**, (found inside the battery compartment.)
- 3 turn on the computer.  
  
indicator: lights up green continuously.  
  
buttons on the psa are automatically locked during usb connection.
- 4 turn on your psa.



## convert music cds into mp3 files

- 1 click the  (record) button. the **Recorder** window will open.
- 2 insert a commercial music cd into your computer's cd tray. **CD lookup** will attempt to add artist track and album names. if information doesn't appear, enter it manually.
- 3 check the boxes next to each track to record then click the  (record) button on the **Recorder**.


*note: by default, the recorder will create mp3 files at 128 kbps, which is considered cd quality (for other options, see the **Options/Settings/Recorder** menus.) recorded tracks will be automatically added to your **Music Library**.*

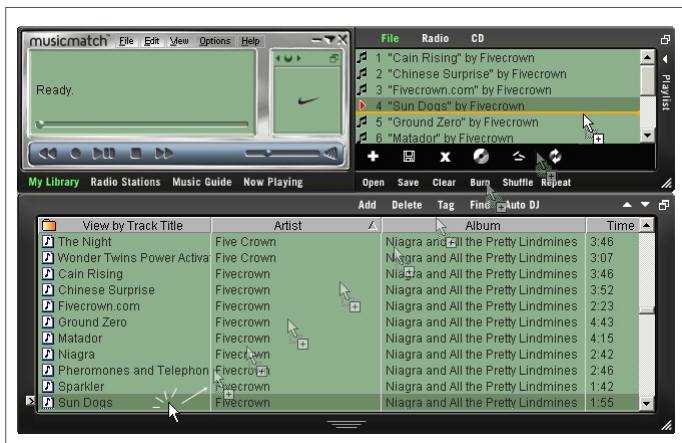
*encoding at 96 kbps can increase playtime with minimal loss in audio quality*



## 20 playlist

### create & save music playlists

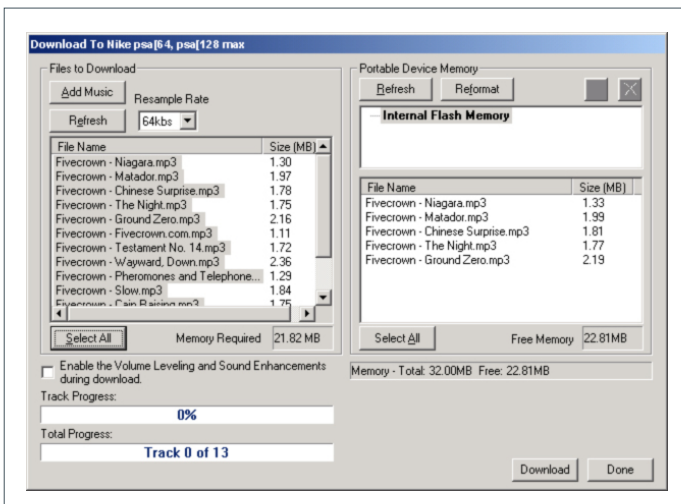
- 1 open the **Music Library** by clicking the **My Library** button.
- 2 double-click a track in the library, or drag and drop tracks from the **Music Library** into the **Playlist** window.
- 3 drag and drop tracks within the **Playlist** to change the play order.
- 4 click  **Save** to save the playlist.



**download music\* to your player from your computer**

- 1 create or open a music playlist.
- 2 click **File** → **Send to Device** → **Download To Nike psa[64, psa[128 max**. your songs will automatically appear in the **Files to Download** window.
- 3 select the songs you want to transfer and then click **Download**.
- 4 after tracks have been transferred to the psa, click **Done** to exit. view download status from the track progress bar.

\* the current psa may not download windows media audio for mac users.  
check out [www.nike-philips.com](http://www.nike-philips.com) for updates of mac plug-in.



## 22 downloading music

### tips:

- the **Portable Device Memory** window (right) shows the tracks currently stored on the psa (if any). to clear tracks from psa memory, click **Reformat** → **Start** → **Close**.
- to fit more songs onto your player with existing memory, use the **Resample Rate** option (upper left), which allows you to reformat the tracks downloaded to a lesser bit rate. this lets you fit more audio onto your player by creating smaller files during the download. this does not affect the files stored on your computer.

### updating MUSICMATCH software\*

be sure you have the latest available version of MUSICMATCH Jukebox by updating your software.

- 1 click **Options** → **Update Software** → **Continue**.
- 2 the update will add files to your computer, then automatically restart MUSICMATCH Jukebox for you.

\* *requires an active internet connection.*

### upgrading your audio player

visit <http://www.nike-philips.com> for more information and firmware upgrades.

## 24 recovery (for Windows OS users only)

### recovery

- my psa hangs on certain tracks
- psa cannot be corrected even after using the Format application to format the psa memory.
- psa won't switch on, but responds and can be detected when I connect it to my PC.

check out solutions from the helpful tips (see page 26-27) first. need more help? the firmware on your psa may have been corrupted. to solve this, try the following recovery application. this will then update your firmware.

1 disconnect the psa from your PC and remove the battery.

2 connect the psa to your PC.

3 press and hold ►|| on the psa. while ►|| is pressed, insert a battery (new battery recommended) and continue holding ►|| .

4 continue holding ►|| for a further 6 seconds.

- this extra time allows your psa to enter the recovery mode.



5 Click **Start** → **Programs** → **Nike psa[64] Player** → **Recovery** to start the recovery application

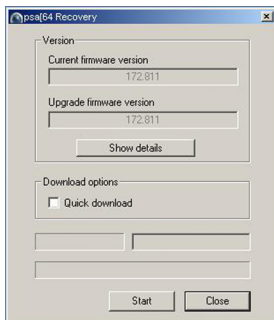
- green light indicator starts to blink


6 if you are prompted with a firmware download message, **The firmware update has detected your device in firmware recovery mode. Currently, the drivers are loading on your system. Please wait until the drivers have completed loading, and then run the firmware update utility again,** click **OK** and start the same recovery application once again. if the firmware download message does not appear, skip directly to **step 7**.

- a recovery window appears showing details of your psa's software version.



- 7 uncheck the **Quick download** box and click **Start** in the recovery window. follow the instructions to update the firmware.



- 8 when the recovery process is complete, click **Close** to exit the recovery window.
- 9 click the hardware icon  on the task tray\* to stop and eject your psa. when the message **The Nike psa[64] Player device can now be safely removed from the system** appears, click **OK**.
- 10 connect the psa to your PC to download your music again.

\* for **Win98 users** there is no hardware icon  . instead, eject your psa when the green light indicator starts to blink.

## 26 helpful tips

### helpful tips

if a fault occurs, first check the points listed below before taking the set for repair.

if you are unable to remedy a problem by following these hints, consult your dealer or service center.

**Warning** : do not open the set as there is a risk of electric shock! under no circumstances should you try to repair the set yourself, as this will invalidate the warranty.

### problem

### solution



---

#### no sound

- battery weak / incorrectly inserted.  
correctly insert fresh battery.
- psa buttons pressed too quickly.  
slow down. press firmly. indicator lights up.
- headphones not properly connected.  
insert headphone plug into socket completely.

---

#### no reaction to controls / malfunction

-  activated  
deactivate .
- electrostatic discharge.  
remove battery and replace after several seconds.

---

#### sound skips during playback on the psa

- mp3 file made at compression level exceeding 320kbps.
- use a lower compression level to record your file into mp3 format
- electrical interference from other appliances, e.g. mobile phones, fluorescent, lamps, electric pylons.  
move away from source of electrical interference.

**problem****solution****usb does not connect/function**

- you are using an unsuitable usb cable.  
use the supplied usb cable only.
- cable connections incorrect / loose.  
check that all connections are correct and well inserted on the psa player and your computer.
- usb driver not installed.  
check that you have installed the usb driver plug-in provided from the psa installation cd rom.
- wrong Windows / MacOS version.  
your computer must be equipped with Windows 98 / Me / 2000 & XP or MacOS 8.6-9.x.
- usb not enabled.  
check the BIOS set-up: usb has to be enabled.

**unable to download files to player**

- battery low and/or connection between the player and computer is loose.  
check battery status and usb cable connection.
- drivers not installed.  
check you have installed the drivers provided from the psa installation cd rom.
- current psa does not download windows media audio for mac users.  
check out **[www.nike-philips.com](http://www.nike-philips.com)** for updates.
- electrostatic discharge.  
remove battery and replace after several seconds.

**incomplete track download**

- usb connection broken during downloading.  
check the usb connection, delete the file on the psa via musicmatch and download track again.

## 28 technical data

### amplifier system

audio out. . . . .	2 x 5mW
S/N ratio. . . . .	>80dB
frequency response . . . . .	20Hz - 20KHz

### memory capacity

built-in . . . . .	64MB*
--------------------	-------

*\*full memory capacity may not be available as some memory will be reserved for the audio player.*

### supported format

MP3 . . . . .	8kbps-320kbps
windows media audio . . . . .	5kbps-160kbps

### firmware

user upgradeable** . . . . .	yes
------------------------------	-----

### SDMI compliance

hardware ready** . . . . .	yes
----------------------------	-----

*\*\* future audio codec (format) support, firmware upgrades and **SDMI** compliance will be available at [www.nike-philips.com](http://www.nike-philips.com)*

### connections

I/O Interface . . . . .	5 pin mini usb connector
-------------------------	--------------------------

### equalizer

equalizer . . . . .	4 presets
---------------------	-----------

### indicator

light . . . . .	green, orange & red
-----------------	---------------------

**power supply**

battery . . . . . 1 x AAA / UM4 / LRO3 alkaline / Ni-MH rechargeable

**battery playtime**

10 hours using AAA alkaline

6 hours using Ni-MH rechargeable

**general**

dimensions. . . . . 60 mm (w) x 68 mm (h) x 27 mm (d)

weight . . . . . 50 g (without battery)

**Windows**, and **Windows Media Audio** are registered trademarks of Microsoft Corporation.

**Pentium ®** is a registered trademark of Intel Corporation.

**Acrobat reader** is a registered trademark of Adobe Corporation.

**PowerPC, Mac, G3** is a registered trademark of Apple computer Corporation.


**INTERNET EXPLORER** is a registered trademark of Microsoft Corporation.

**Netscape Navigator** is a registered trademark of Netscape Corporation.

all rights reserved. all trade names referenced are the service mark, trademark or registered trademarks of their respective manufacturers.

# IMPORTANT SAFETY INSTRUCTIONS

---

1. **Read these instructions.**
2. **Keep these instructions.**
3. **Heed all warnings.**
4. **Follow all instructions.**
5. **Do not use this apparatus near water.**
6. **Clean only with a dry cloth.**
7. **Do not block any of the ventilation openings. Install in accordance with the manufacturers instructions.**
8. **Do not install near any heat sources** such as radiators, heat registers, stoves, or other apparatus (including amplifiers) that produce heat.
9. **Only use attachments/accessories** specified by the manufacturer.
10.  **Use only with a cart**, stand, tripod, bracket, or table specified by the manufacturer or sold with the apparatus. When a cart is used, use caution when moving the cart/apparatus combination to avoid injury from tip-over.
11. **Refer all servicing** to qualified service personnel. Servicing is required when the apparatus has been damaged in any way, such as if the power-supply cord or plug is damaged, liquid has been spilled or objects have fallen into the apparatus, or when the apparatus has been exposed to rain or moisture, does not operate normally, or has been dropped.
12. **Battery usage CAUTION** – To prevent battery leakage which may result in bodily injury or damage to the unit:
  - Install **all** batteries correctly, **+** and **-** as marked on the unit.
  - Do not mix batteries (**old** and **new** or **carbon** and **alkaline**, etc.).
  - Remove batteries when the unit is not used for a long time.

**Note :** *This equipment has been tested and found to comply with the limits for a Class B digital device, pursuant to part 15 of the FCC Rules. These limits are designed to provide reasonable protection against harmful interference in a residential installation. This equipment generates, uses, and can radiate radio frequency energy and, if not installed and used in accordance with the instruction manual, may cause harmful interference to radio communications. However, there is no guarantee that interference will not occur in a particular installation. If this equipment does cause harmful interference to radio or television reception, which can be determined by turning the equipment off and on, the user is encouraged to try to correct the interference by one or more of the following measures :*

- Relocate the receiving antenna.*
- Increase the separation between the equipment and receiver.*
- Connect the equipment into an outlet on a circuit different from that to which the receiver is connected.*
- Consult the dealer or an experienced radio/TV technician for help.*

## Return your **Warranty Registration** card today to ensure you receive all the benefits you're entitled to.

- Once your Philips purchase is registered, you're eligible to receive all the privileges of owning a Philips product.
- So complete and return the Warranty Registration Card enclosed with your purchase at once, and take advantage of these important benefits.

### Warranty Verification

Registering your product within 10 days confirms your right to maximum protection under the terms and conditions of your Philips warranty.

### Owner Confirmation


Your completed Warranty Registration Card serves as verification of ownership in the event of product theft or loss.


### Model Registration

Returning your Warranty Registration Card right away guarantees you'll receive all the information and special offers which you qualify for as the owner of your model.

Know these  
*safety* symbols



 This "bolt of lightning" indicates uninsulated material within your unit may cause an electrical shock. For the safety of everyone in your household, please do not remove product covering.

 The "exclamation point" calls attention to features for which you should read the enclosed literature closely to prevent operating and maintenance problems.

#### For Customer Use

Enter below the Serial No. which is located on the rear of the cabinet. Retain this information for future reference.

Model No. \_\_\_\_\_

Serial No. \_\_\_\_\_

**WARNING:** TO PREVENT FIRE OR SHOCK HAZARD, DO NOT EXPOSE THIS EQUIPMENT TO RAIN OR MOISTURE.

**CAUTION:** To prevent electric shock, match wide blade of plug to wide slot, and fully insert.



## LIMITED WARRANTY

### DIGITAL AUDIO PLAYER

90 Days Free Exchange / One Year Free Parts

This product must be carried in for an exchange.

#### WHO IS COVERED?

You must have proof of purchase to exchange the product. A sales receipt or other document showing that you purchased the product is considered proof of purchase. Attach it to this owner's manual and keep both nearby.

#### WHAT IS COVERED?

Warranty coverage begins the day you buy your product. For 90 days thereafter, a defective or inoperative product will be replaced with a new, renewed or comparable product at no charge to you. From 90 days to one year from the day of purchase, all parts will be repaired or replaced, but you pay for all labor charges. After one year from the day of purchase, you pay for the replacement or repair of all parts, and for all labor charges. A replacement product is covered only for the original warranty period. When the warranty on the original product expires, the warranty on the replacement product also expires.

#### WHAT IS EXCLUDED?

Your warranty does not cover:

- labor charges for installation or setup of the product, adjustment of customer controls on the product, and installation or repair of antenna systems outside of the product.
- product repair and/or part replacement because of misuse, accident, unauthorized repair or other cause not within the control of Philips.
- reception problems caused by signal conditions or cable or antenna systems outside the unit.
- a product that requires modification or adaptation to enable it to operate in any country other than the country for which it was designed, manufactured, approved and/or authorized, or repair of products damaged by these modifications.
- incidental or consequential damages resulting from the product. (Some states do not allow the exclusion of incidental or consequential damages, so the above exclusion may not apply to you. This includes, but is not limited to, prerecorded material, whether copyrighted or not copyrighted.)
- a product used for commercial or institutional purposes.

#### WHERE IS EXCHANGE AVAILABLE?

You may exchange the product in all countries where the product is officially distributed by Philips. In countries where Philips does not distribute the product, the local Philips service organization will attempt to provide a replacement product (although there may be a delay if the appropriate product is not readily available).

### **BEFORE REQUESTING EXCHANGE...**

Please check your owner's manual before requesting an exchange. Adjustments of the controls discussed there may save you a trip.

### **EXCHANGING A PRODUCT IN U.S.A., PUERTO RICO, OR U.S. VIRGIN ISLANDS...**

Contact 1-800-531-0039 to arrange an exchange. Or, ship the product, insured and freight prepaid, and with proof of purchase enclosed, to the address listed below.

Philips Exchange Program  
Suite A  
406 North Irish Street  
Greeneville TN 37745

(In U.S.A., Puerto Rico, and U.S. Virgin Islands, all implied warranties, including implied warranties of merchantability and fitness for a particular purpose, are limited in duration to the duration of this express warranty. But, because some states do not allow limitations on how long an implied warranty may last, this limitation may not apply to you.)

### **EXCHANGING A PRODUCT IN CANADA...**

Please contact Philips at:

1-800-661-6162 (French Speaking)  
1-800-531-0039 (English or Spanish Speaking)

(In Canada, this warranty is given in lieu of all other warranties. No other warranties are expressed or implied, including any implied warranties of merchantability or fitness for a particular purpose. Philips is not liable under any circumstances for any direct, indirect, special, incidental or consequential damages, howsoever incurred, even if notified of the possibility of such damages.)

### **REMEMBER...**

Please record below the model and serial numbers found on the product. Also, please fill out and mail your warranty registration card promptly. It will be easier for us to notify you if necessary.

MODEL # \_\_\_\_\_

SERIAL # \_\_\_\_\_

*This warranty gives you specific legal rights. You may have other rights which vary from state/province to state/province.*



**NIKE**

SWOOSH



**PHILIPS**

© Koninklijke Philips Electronics N.V., 2002,  
Nike, Inc. 2002. All rights are reserved.  
type number - act200