



Philips Norelco Shaver
series 9000 SensoTouch
Shaving unit

V-Track Precision Blades PRO

8-direction ContourDetectHeads
Fits S8000 (12__X)
Fits Arcitec (10__X)



RQ12/72

Reset your shaver to new

Change heads every 12 months for best results

Within one year your shaver heads cut 4.5 million hairs on your face. Replace the shaver heads and get back peak performance

Perfection in every pass

- Our best shaving system on 1-3 day beard
- Heads flex in 8 different directions for a superb result

Easy to use

- Easy to replace shaving heads
- Reset your shaver after replacing shaving heads
- Replacement shaving head for SensoTouch 3D & Arcitec shavers
- Reset your shaver to new

PHILIPS
NORELCO

Shaving unit

V-Track Precision Blades PRO 8-direction ContourDetectHeads, Fits S8000 (12__X), Fits Arcitec (10__X)

Highlights

V-Track blade system PRO



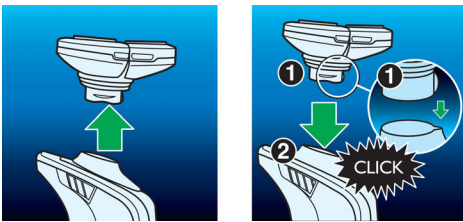
Get the perfect close shave. The V-Track Precision PRO Blades gently positions each hair in the best cutting position, from 1 day up to 3 day beard and even the flat laying and different length of hairs. Cuts 30% closer* in less strokes leaving your skin in great condition.

8-direction ContourDetectHeads



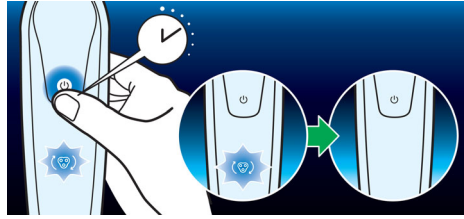
Follow every contour of your face and neck with 8-directional ContourDetect heads. You'll catch 20% more hairs with every pass. Resulting in an extremely close, smooth shave.

Simple replacement



Easily renew your shaving unit using our click off, click on system.

How to reset your shaver



The latest Philips shavers have an inbuilt replacement reminder which will indicate you when to replace shaving heads. After replacing shaving heads, you can reset replacement trigger by pressing the on/off button for more than 5 seconds. Otherwise, replacement trigger will turn off automatically after 9 successive shaves.

Compatibility



RQ12+ replacement head is compatible with all SensoTouch 3D (RQ12xx) and Arcitec (RQ10xx) shavers.

Reset your shaver to new



To get back to 100% performance, replace your shaving heads every 12 months.

RQ12/72

Specifications

Shaving heads

- Fits product type: Shaver series 8000 (12__X), Arcitec (10__X)

Accessories

- Included in pack: Retaining ring holder, Protective cap



Issue date 2017-11-04

Version: 6.0.1

© 2017 Koninklijke Philips N.V.
All Rights reserved.

Specifications are subject to change without notice.
Trademarks are the property of Koninklijke Philips N.V.
or their respective owners.

www.philips.com

* Versus its Philips predecessor