



**Philips Lumea Prestige
IPL - Hair removal device**

With unique curved attachments

Armpits, bikini, body, face
With SmartSkin sensor
Both cordless and corded use



BRI956/00

Experience hair-free smoothness for up to 8 weeks*

Unique attachments designed for optimal results

The world's first IPL with unique curved attachments is designed for optimal results all over. Philips Lumea Prestige is also the most effective IPL solution offering cordless and corded use and a SmartSkin sensor.

Continuous smooth skin with Lumea IPL technology

- Derived from professional IPL, developed with dermatologists
- Proven effectiveness
- Suitable for a wide variety of hair and skin types
- Both cordless and corded functionality

Specialized treatment of different body areas

- Uniquely curved attachments for different body areas
- Armpits attachment medium size, curved-out design for armpit
- Bikini attachment, curved with transparent filter for bikini
- Body attachment with large, curved-in design for large areas
- Face attachment with precise design and extra face filter

Maximum freedom, minimum hassle

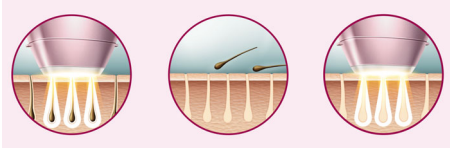
- With SmartSkin sensor
- No replacement parts, no hidden costs

IPL - Hair removal device

With unique curved attachments Armpits, bikini, body, face, With SmartSkin sensor, Both cordless and corded use

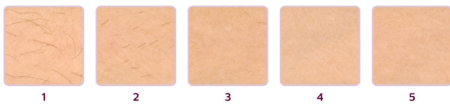
Highlights

Lumea prevents hair regrowth**



Philips Lumea uses an innovative light based technology called Intense Pulsed Light (IPL) to break the cycle of hair regrowth. Gentle pulses of light are applied at the root and, after several treatments, hair is prevented from growing back. IPL technology has been available in specialist salons since 1997. Philips Lumea, derived from this professional IPL technology, makes it possible for you to treat hair easily and effectively at home. Philips Lumea Prestige is the culmination of 14 years of research and development in collaboration with leading dermatologists.

Proven effectiveness



Objective studies show significant hair reduction in as little as 3 to 4 bi-weekly treatments, resulting in smooth, hair-free skin. To maintain results touch-up every 4 to 8 weeks. - To enlarge this picture, please click on the image in the image gallery on the top of this page.

Suitable hair and skin types



Philips Lumea Prestige works effectively, easily and safely on a wide variety of hair and skin

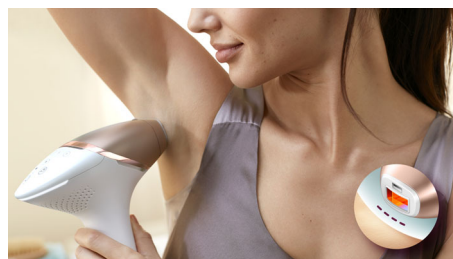
types. It works on naturally dark blonde, brown and black colored hairs and on skin tones from very white to dark brown. As with other IPL based treatments, Philips Lumea cannot be used to treat white / grey, light blonde or red hair and is not suitable for very dark skin. This is due to the high contrast required between the pigment in hair color and pigment in the skin tone.

Treatment of body areas



Inspired by the uniqueness of each body area, Philips Lumea Prestige is the only IPL device to offer uniquely curved attachments designed for optimal results on different body areas. Attachments differ by combinations of shape, window size and filter. This Philips Lumea Prestige offers specialized treatment on body (legs, arms, stomach) and face (upper lip, chin), bikini and armpits.

Armpits attachment



It comes in a specially curved design to treat hard-to-reach underarm hairs - 3 cm² window size. 86% of women satisfied with hair reduction in underarms.***

BRI956/00

Bikini attachment



It is specially designed for effective treatment of bikini hair. It is curved and has an extra transparent filter. Hair in this area tends to be stronger and thicker than leg hair - 3 cm² window size. 78% of women satisfied with hair reduction in bikini area.***

Body attachment



Large, curved-in design to follow body contours thus effectively covering areas like legs, arms, stomach. Also, enables fast treatment on large body areas thanks to the largest treatment window (4.1 cm² window size). 83% of women satisfied with hair reduction on legs.***



Philips Green Logo

Philips Green Products can reduce costs, energy consumption and CO₂ emissions. How? They offer a significant environmental improvement in one or more of the Philips Green Focal Areas – Energy efficiency, Packaging, Hazardous substances, Weight, Recycling and disposal and Lifetime reliability.

IPL - Hair removal device

With unique curved attachments Armpits, bikini, body, face, With SmartSkin sensor, Both cordless and corded use

Specifications

Application areas

- Body areas: Arms, Legs, Stomach
- Face areas: Chin, Upper lip, Jawline
- Sensitive areas: Armpits, Bikini

Technical specs. attachments

- Body treatment attachment: Shape: Convex curved, Window size: 4.1 cm²
- Face treatment attachment: Shape: Flat, Window size: 2 cm², extra filter
- Armpits treatment attachment: Shape: Concave curved, Window size: 3 cm²
- Bikini treatment attachment: Shape: Concave curved, Window size: 3 cm², extra filter

Application mode

- Slide and Flash: For quick application
- Stamp and Flash: For treatment on small areas
- Corded / cordless use: Both cordless and corded use

Safety and adjustable settings

- Integrated UV filter: Protects skin from UV light
- 5 light energy settings: Adjustable to your skin type

- Integrated safety system: Prevent unintentional flashing
- Skin Tone sensor: Detects your skin tone
- SmartSkin sensor: The right setting on demand

Application time

- Lower legs: 8,5 min
- Armpit: 2,5 min
- Bikini line: 2 min
- Face areas: 1,5 min

Technical specifications

- High performance lamp: Delivers > 250,000 flashes

Power

- Voltage: 100-240 V

Items included

- Instructions for use: User manual
- Storage: Luxurious pouch
- Adapter: 19.5V / 4000mA

Service

- Warranty: 2 years global warranty



Issue date 2017-09-26

Version: 3.4.1

© 2017 Koninklijke Philips N.V.
All Rights reserved.

Specifications are subject to change without notice.
Trademarks are the property of Koninklijke Philips N.V.
or their respective owners.

www.philips.com

* Measured on legs, after the initial 4-5 treatments, individual results vary

** Up to 92% hair reduction after 3 treatments when following the treatment schedule, measured on legs, individual results may vary

*** Study conducted in Netherlands and Austria, 46 women, after 3 treatments on armpits, bikini, legs, after 2 treatments on face