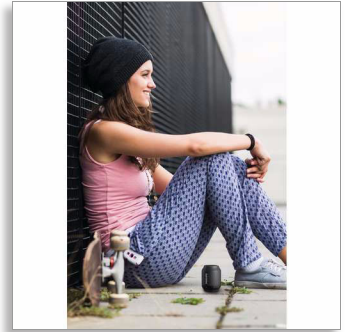




Philips
wireless portable speaker

Bluetooth®
Rechargeable battery
2W



BT50B

Big sound that fits in a fist

Live life with music streamed wirelessly from one compact, round and easy to carry speaker. Bright colors help you pick one that fits your style and a built-in rechargeable battery keeps music pumping wherever and whenever you take it.

Impressive sound

- Advanced audio performance with a compact design
- Anti-clipping function for loud, distortion free music

Simplicity in use

- Wireless music streaming via Bluetooth
- Audio-in for easy connection to almost any electronic device

Designed for grab and go

- Built-in rechargeable battery for music playback anywhere

PHILIPS

wireless portable speaker
Bluetooth® Rechargeable battery, 2W

Specifications

Compatibility

- iPad: iPad 1, iPad 2, new iPad, iPad mini, iPad with Retina display
- iPhone: iPhone 3, iPhone 3GS, iPhone 4, iPhone 4S, iPhone 5, iPhone 5C, iPhone 5S
- iPod touch: 3rd generation or later
- Android tablets & smartphones: with Android 2.1 and Bluetooth 2.1 or above
- work with: Bluetooth 4.0 or below
- other Bluetooth-enabled device

Design and finishing

- Color: Black

Connectivity

- Bluetooth profiles: A2DP, AVRCP, HFP
- Bluetooth range: Line of sight, 10M or 30FT
- Audio in (3.5mm)
- USB charging

Sound

- Output power (RMS): 2W
- Sound System: Mono

Loudspeakers

- Speaker driver: 1 x 1.5"

Power

- Operating time on battery: 6 hr
- Battery type: lithium polymer (built-in)

Accessories

- Included accessories: USB cable for PC charging, World Wide Warranty leaflet, Quick install guide

Dimensions

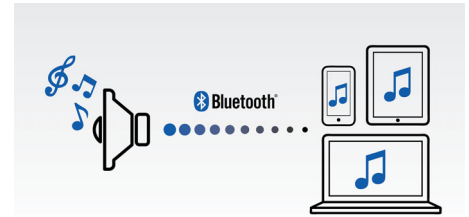
- Product dimensions (WxDxH): 6.1 x 6.1 x 7.6 cm
- Packaging dimensions (WxDxH): 8.1 x 9.5 x 14 cm
- Product weight: 0.09 kg
- Weight incl. Packaging: 0.2 kg



BT50B/37

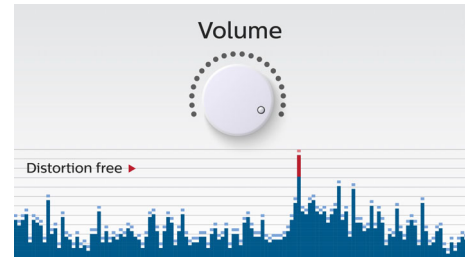
Highlights

Wireless music streaming



Bluetooth is a short range wireless communication technology that is both robust and energy-efficient. The technology allows easy wireless connection to iPod/iPhone/iPad or other Bluetooth devices, such as smartphones, tablets or even laptops. So you can enjoy your favorite music, sound from video or game wireless on this speaker easily.

Anti-clipping function



Anti-Clipping lets you play music louder and keeps it high quality, even when the battery is low. It accepts a range of input signals, from 300mV to 1000mV and keeps your speakers safe from damage by distortion. This built-in function monitors the musical signal as it goes through the amplifier and keeps peaks within the amplifier's range, preventing the audio distortion caused by clipping without affecting loudness. A portable speaker's ability to reproduce musical peaks decreases along with battery power, yet anti-clipping reduces peaks caused by low battery, keeping music distortion free.

Audio-in



Audio-in for easy connection to almost any electronic device



Issue date 2017-09-09

Version: 2.0.10

12 NC: 8670 001 25238
UPC: 6 09585 24831 1

© 2017 Koninklijke Philips N.V.
All Rights reserved.

Specifications are subject to change without notice.
Trademarks are the property of Koninklijke Philips N.V.
or their respective owners.

www.philips.com