



Philips Avance Collection
Electric Pressure Cooker

6 Liter

HD2178/03

Preparation of your favorite dishes

MultiCooker quick and healthy food

Philips multicooker, pressure cooker ensure preparation of your favorite dishes quickly and keeping vitamins

Smart and fast cooking

- Nutritional keep warm keeps rice fresh for 12 hours
- Integrated microprocessor ensure easy cooking

Easy to operate

- Preset-timer for 24 hours
- Easy-to-program timer indicates the cooking progress
- Sensitive sensor touch operational panel

The ultimate in convenience

- Easy-to-clean detachable inner lid design
- Innovative dual handle design, free to hang on wall

Safe cooking

- Sensible valve locks up upper lid under high pressure
- Auto pressure release device to ensure safety during cooking
- Child lock enhance safe operation

PHILIPS
sense and simplicity

Highlights

Auto pressure release device



Auto pressure release device to ensure safety during cooking

Easy-to-clean



Easy-to-clean detachable inner lid design.

Easy-to-control

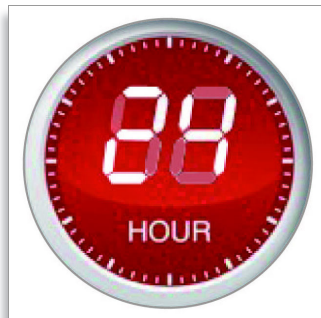


Sensitive sensor touch operational panel

12 hours keep warm

Use the keep warm function to keep rice or dishes warm for a longer period of time, without losing food nutrition and taste. When the cooking process is finished, the rice cooker automatically switches to the keep warm mode

Preset-timer for 24 hours



Preset-timer for 24 hours

Sensible valve

Sensible valve locks up upper lid under high pressure

Child lock

You can lock the control panel by pressing down on the 'Child lock' button for three seconds. This automatically locks the operation panel, ensuring there is no misuse from children during the cooking procedure. Press the 'Child lock' button for another 3 seconds to unlock it.

Specifications

Accessories

- Measuring cup
- Rice scoop
- Soup scoop
- Spatula

Design specifications

- Color of control panel: Black
- Color(s): Silver metallic
- Dimensions (L x W x H): 321*320*356 mm
- Materials of main body: SUS430
- Weight (incl. packaging): 6.42Kg kg

Technical specifications

- Cord length: 1.2 m
- Frequency: 50 Hz
- Voltage: 220 V
- Wattage: 1000 W



Issue date 2013-04-12

Version: 5.0.1

© 2013 Koninklijke Philips Electronics N.V.
All Rights reserved.

Specifications are subject to change without notice.
Trademarks are the property of Koninklijke Philips
Electronics N.V. or their respective owners.

www.philips.com