

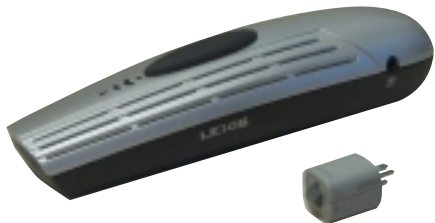
# LEXIS

user guide



## contents

introduction	.1	cautions/notices	.24
package contents	.2-3	cleaning	.24
microphone features	.4-6	appendix a: troubleshooting	.25-26
receiver features	.7	appendix b: warranty	.27
about channels	.8	disclosure policies	.28
connecting receiver	.9	code of federal regulations	.29
professional fitting	.10	LEXIS frequencies	.30
suggested uses for LEXIS system	.11		
suggested settings for receiver	.12		
suggested settings for microphone	.13		
ways to use your microphone	.14-16		
connecting mic to other devices	.17-18		
batteries/charging	.19-22		
extending microphone range	.23		
replacing pin locks	.23		



## introduction

Congratulations on your decision to take the next step toward better hearing! Many people with active lifestyles like yours have chosen Lexis to improve the quality of their participation in social situations.

Lexis is an addition to your behind-the-ear hearing instruments. Simply attaching the small receiver to your hearing instrument creates the mobility and freedom to participate in situations that might otherwise be uncomfortable. You'll notice improved speech understanding in almost any

environment — even in the presence of noise or reverberation, or at a distance from the speaker.

Your Lexis solution is compatible with most manufacturers' hearing instruments, so even if you decide to change your hearing instrument, your investment is safe in Lexis.

Lexis conforms to the guidelines of the Mosaic standard. Mosaic ([www.mosaic-consortium.org](http://www.mosaic-consortium.org)) helps ensure the interoperability of new wireless systems for hearing healthcare.

1

## typical package contents

- Microphone/  
transmitter



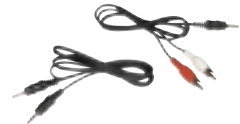
- Lavalier cord



- Microphone charger



- Auxilliary input  
cables



- Receiver  
module(s)



- Extra color  
pin locks



- External antenna



- NiMH rechargeable  
batteries\*



\***NOTE:** batteries need to be charged for 7 hours before they are ready to use in the microphone/transmitter

you will also need:

• Behind-the-ear hearing aid  
(contact manufacturer for compatibility information)

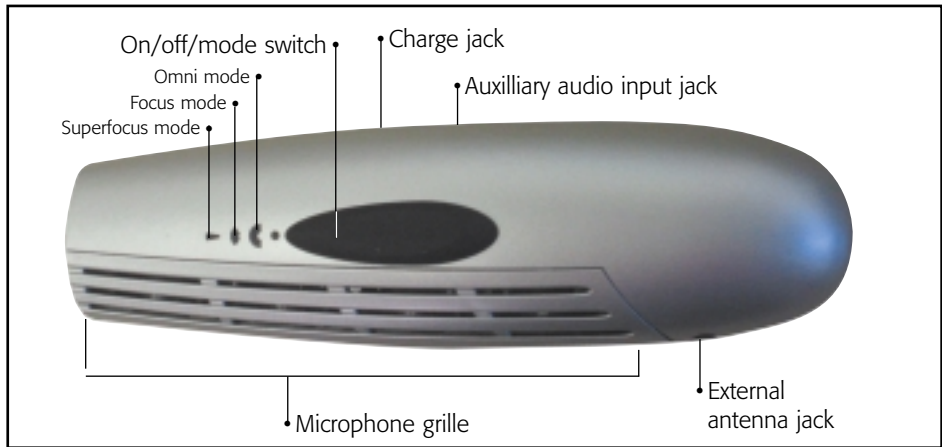


• Audio shoe:  
• Must be compatible with your hearing aid  
• **Note:** Some versions of Lexis include the audio shoe as a component of the receiver

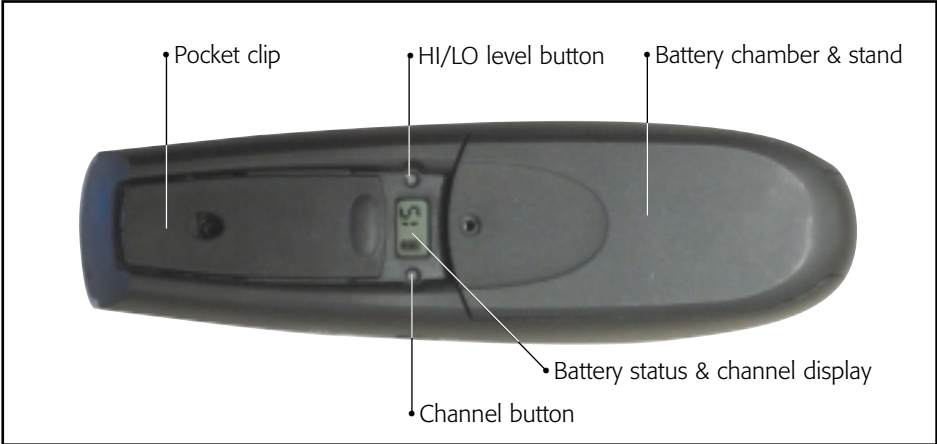


2

## microphone features (top)



# microphone features (bottom)



## microphone features (display)

• Battery level indicator



• Display only shows channel number when in low sensitivity mode



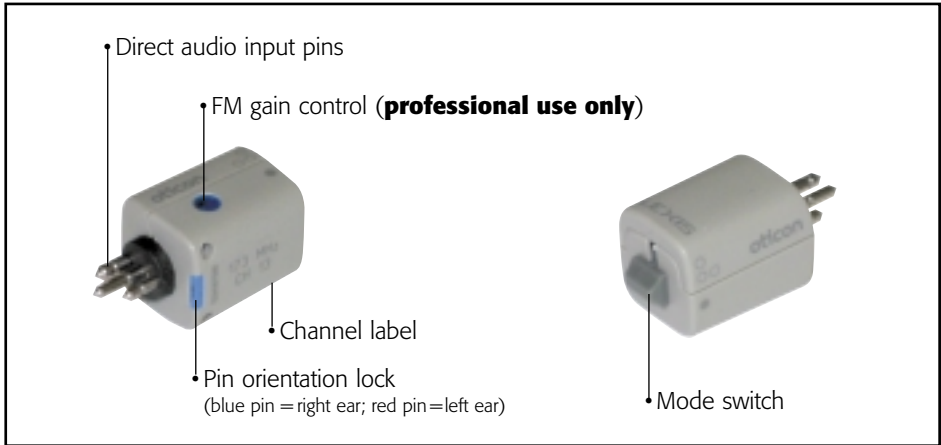
• Display alternates between channel number and **HI** when set to boom mic (high sensitivity) level. Use Omni mode (See 10) to use the boom mic; Focus and Superfocus modes work normally.





# 3

## receiver features



# 4

## about channels

Your Lexis system is a radio device, and like any other radio, it communicates on specific channels. Your microphone and receiver must be on the same channel to work together.

Never operate two microphones on the same channel – you'll experience annoying interference.

If you are travelling internationally, be aware that your channel may not be approved for use in all countries. Contact your manufacturer for a list of channels approved around the world.

# 5

## changing channels

If you want to use your microphone with a receiver on a different channel, you can change the microphone channel as shown here.

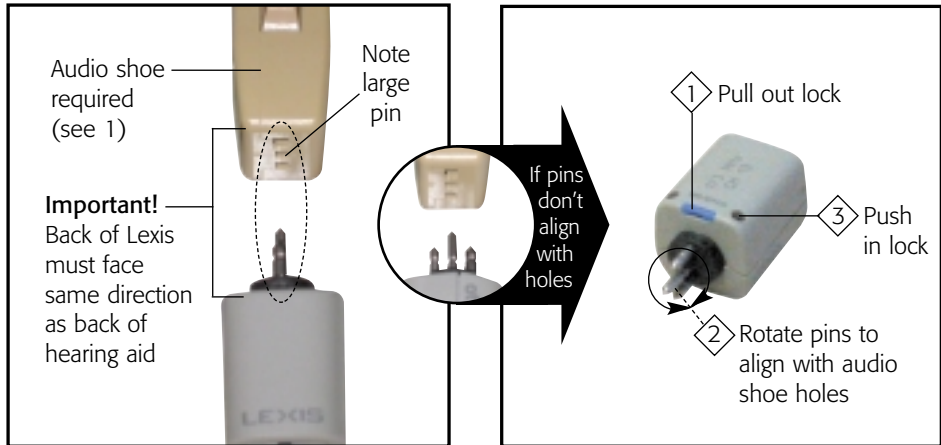


6

connecting the receiver  
to your hearing aid

7

changing pin  
orientation



# 8

## professional fitting

Your hearing instrument has unique characteristics. To work properly, your Lexis receiver must be adjusted to match those characteristics. Only a hearing care professional is qualified to perform such adjustments. Fitting procedures are available in the *Lexis Fitting Guide*. Please visit your hearing care professional for a complete fitting.

Lexis has a unique feature in its variable FM gain control that allows your hearing care professional to change the FM signal relationship to the environmental sounds. This creates the optimal signal-to-noise ratio, which improves your ability to hear in noise and over distance.

Your hearing instrument has distinctive characteristics, so for it to work properly with your Lexis receiver it must be correctly adjusted. Only a hearing care professional is qualified to perform these adjustments; please visit them for a complete fitting. These fitting procedures are available in the *Lexis Fitting Guide*.

# 9

## suggested ways to use your Lexis system

The possibilities are limitless, but here are some common uses:



classrooms



meetings



parties



television



car

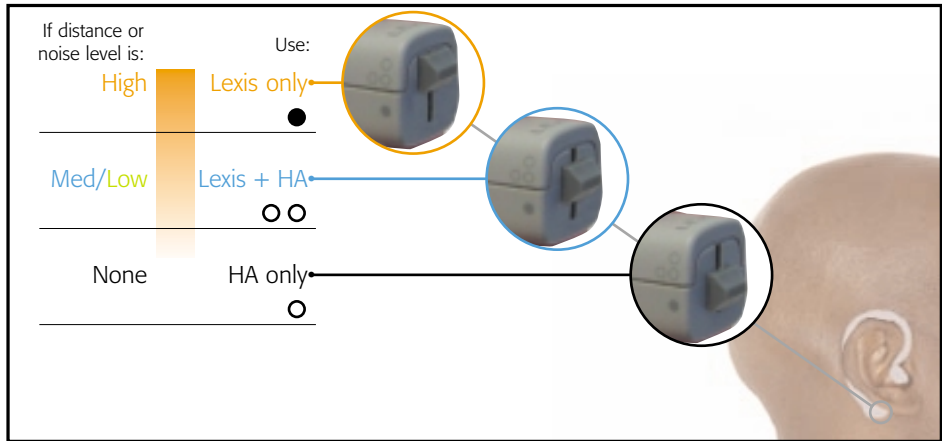


household

10

## suggested settings for your receiver

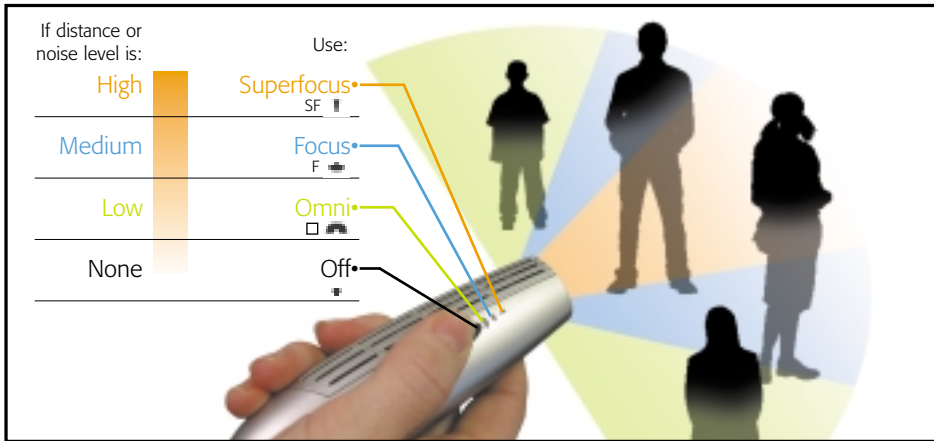
These are suggested starting points; with experience, you can quickly change the settings to suit your preferences.



# 11

## suggested settings for your microphone

These are suggested starting points; with experience, you can quickly change the settings to suit your preferences.



# 12

## ways to use your microphone

As you move from place to place — from home to school to work to restaurants and parties — you will find that your listening environment changes dramatically. You can use your versatile Lexis microphone to improve understanding in practically any of these environments, just by changing its position. The examples shown here are only suggestions — with practice, you're sure to discover what works best for you.



## point and listen

Point toward  
sound source

Ideal for:

- Parties
- Shopping
- Small group discussions

Avoid covering grille







on the table



around a friend  
or teacher's neck





clipped to a friend or  
teacher's pocket



a friend or teacher  
uses a boom mic  
(optional accessory)



Superfocus mode  
recommended.

Ideal for:

- Lectures
- Sports
- Parent/partner  
communication



Provides the  
best possible  
signal.

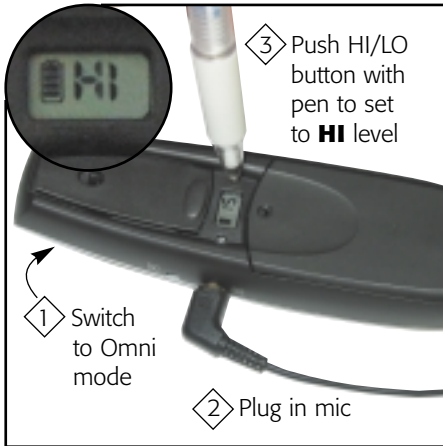
Ideal for:

- Lectures
- Sports
- Parent/partner  
communication

**NOTE:** These user modes may require the external antenna for optimum performance.

## connecting a boom mic

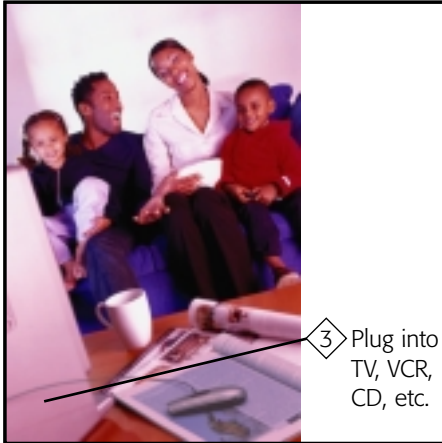
**NOTE:** You can override the boom mic signal by switching to Focus or Superfocus modes.



## connecting to TV, stereo, & other devices



## notes on connecting to TV, stereo, & other devices



- Your microphone must be set to LO level to connect to TV, stereo, and other devices
- If your microphone is off, it will automatically turn on when you plug in the auxiliary input cable
- It is recommended that you use the TV Audio Out jacks (on the back of most TVs). If you use the Headphone jack, the TV speaker will turn off
- Switch to Omni mode to mix in environmental sounds (focus modes are muted)
- If no auxiliary signal is present for 5 minutes (e.g., if the TV isn't on), your microphone will automatically turn off
- To override the 5-minute timeout, switch to Superfocus mode, then to Off

# 13

## batteries

Typical battery life: 8 hours

The unit will shut down when battery voltage is too low. During shut-down the unit power will cycle on and off to give an audio indication of low battery



Indicator level drops as battery drains



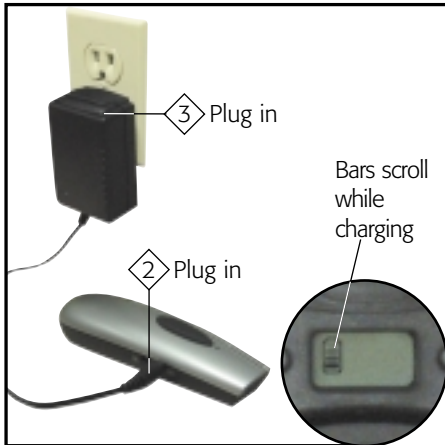
your receiver has no battery

Your Lexis receiver draws a small amount of power from the battery inside your hearing aid. It does not have a battery of its own. Do **not** attempt to open the receiver case.



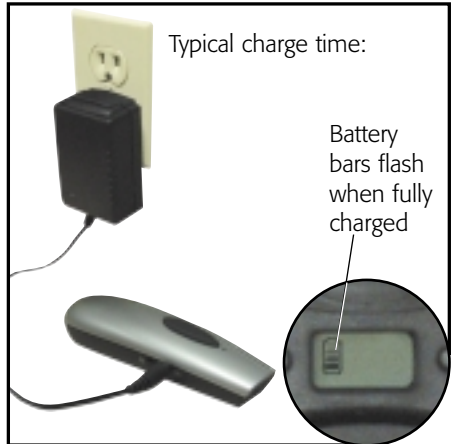
charging in progress

**Never recharge alkaline batteries!**



completed charging

**Never recharge alkaline batteries!**



## replacing microphone batteries

Your Lexis microphone uses 2 AAA batteries. These will eventually need to be replaced — after about 1 year for rechargeable batteries, and after about 8 hours of use for Alkaline batteries. You can replace your batteries with any of the following:

- Special “short-sleeve” rechargeable batteries from your dealer. **Only these batteries can be recharged inside your microphone.**
- Standard rechargeable NiMH batteries. These will not recharge inside your microphone, but can be removed for charging.
- Standard non-rechargeable Alkaline batteries (when you don’t have time to charge).

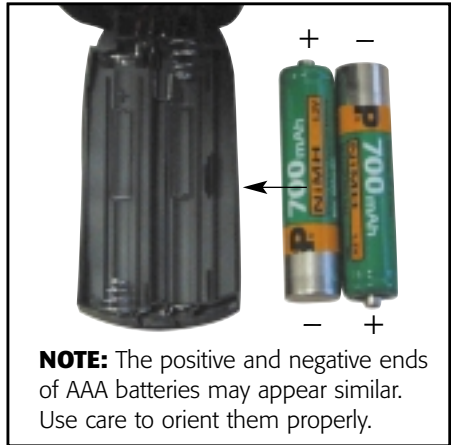
**NOTE:** Always dispose of old batteries in approved battery recycling bins. It may be illegal to dispose in the trash. If you are not sure of proper disposal method, please consult your local authority.



## removing batteries



## replacing batteries





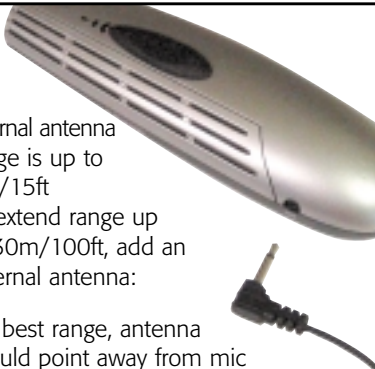
# 14

## extending microphone transmission range

- Internal antenna range is up to 5m/15ft
- To extend range up to 30m/100ft, add an external antenna:

For best range, antenna should point away from mic

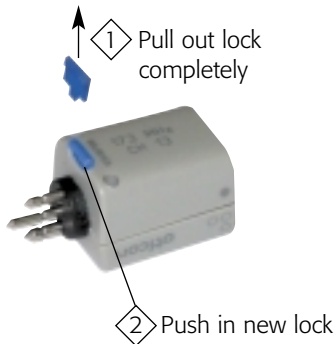
**NOTE:** Actual range may vary depending on environmental conditions.



# 15

## replacing pin locks

You can color-code your pin locks to distinguish right and left receiver modules



## 16

## cautions/notices

- do not use on aircraft without permission of flight crew
- do not operate two transmitters on the same channel (causes interference)
- do not immerse Lexis units in water or other liquids
- some electronic devices (microwave ovens, for example) can interfere with your Lexis signal
- avoid clothing or hand noise on microphone
- supervise small children to avoid swallowing or choking on parts

## 17

## cleaning



- Clean gently with a soft, damp cloth
- Do not use solvents
- Do not immerse

## appendix a: troubleshooting

### **no sound at all**

- Check the hearing aid in isolation to make sure it is not malfunctioning
- Check that receiver mode switch is in correct position
- Check that microphone mode switch is in correct position
- Check that receiver and microphone channels match
- Recharge or replace batteries
- Adjust FM gain control

### **no FM reception**

- Confirm that the DAI shoe is properly seated, undamaged, and set properly
- Check that mode switch is in correct position
- Check that the microphone is on

- Check that receiver and microphone channels match
- Recharge or replace batteries

### **weak or distorted sound**

- Check for improperly fitting or clogged earmolds, or excess ear wax
- Recharge or replace batteries
- Adjust FM gain control (consult your hearing care professional)

### **static, intermittent sound, or feedback**

- Move away from sources of interference (metal structures, computers, etc.)
- Make sure that no other microphone is broadcasting on the same channel
- Clean and check battery contacts
- Check for improperly fitting or clogged earmolds, or excess ear wax
- Turn down FM gain control (consult your hearing care professional)

### **microphone batteries won't charge**

- LCD battery icon will flash if there is a problem with charging
- Check that batteries are special “short sleeve” batteries – all other batteries can not be charged
- Check that charger is plugged into working wall socket
- Clean charge jack

### **LCD error codes**

- E2 – LCD communication error – contact your service center for help
- E1 – RF fault – contact your service center for help

### **Omni mode does not work**

- Check the LCD panel – if the panel is flashing “HI”, then your microphone is set to HI (or boom mic) level. Switch to Omni mode, and push the HI/LO button to reset the mic to LO mode. See [10](#)

### **very noisy sound when plugged into TV, stereo**

- If you experience a noisy signal when connecting the microphone to TV, stereo, etc., check the LCD panel – if the panel is flashing “HI”, then your microphone is set o HI (or boom mic) level. Switch to Omni mode, and push the HI/LO button to reset the mic to LO mode. See [10](#)

## appendix b: manufacturer's warranty

The manufacturer issues a one-year limited warranty to the original consumer of this product.

This warranty will go into effect upon the date of original purchase of this equipment, and will remain in effect for one calendar year from that date.

### **what is covered by this warranty**

Any electronic component which, because of workmanship, manufacturing, or design defects, fails to function properly under normal use during the life of this warranty will be replaced or repaired at no charge for parts or labor when returned to the point of purchase. Transportation is paid by the customer. If it is determined that repair is not feasible, the entire unit may be replaced with an equivalent unit upon mutual agreement of the manufacturer and customer.

### **what is not covered by this warranty**

This one-year limited warranty does not apply to:

- Malfunctions resulting from abuse, neglect, or accident
- Peripheral accessories as itemized within the product brochure, when such items are returned after 90 days from the original purchase
- Batteries
- Instruments connected, installed, used, or adjusted in a

manner contrary to the instructions provided by the manufacturer

- Consequential damages and damages resulting from delay or loss of this instrument. The exclusive remedy under this warranty is strictly limited to repair or replacement as herein provided.
- Products damaged in transit unless investigated by the shipper and returned to the warrantor with the investigation report.

The manufacturer reserves the right to make changes in the design or construction of any of its instruments at any time without incurring any obligation to make any changes whatsoever on units previously purchased. This warranty is in lieu of all other expressed warranties by the manufacturer. No representative or person is authorized to represent or assume for the manufacturer any liability in connection with the sale or use of this product other than as set forth above.

If your Lexis system requires service under the terms of this warranty, carefully package the instrument to prevent damage in transit and return it to the point of purchase. Include a detailed description of the problem, your full name, billing and shipping address, and telephone number.

## warranty (cont'd)

The above warranty does not affect any legal rights that you might have under applicable national legislation governing sale of consumer goods. Your point of purchase may have issued a warranty that goes beyond the clauses of this limited warranty. Please consult your point of purchase for further information

## disclosure policies

This transmitter is authorized by rule under the Low Power Radio Service (47 C.F.R. Part 95) and must not cause harmful interference to TV reception or United States Navy SPASUR installations. You do not need an FCC license to operate this transmitter. This transmitter may only be used to provide: auditory assistance to persons with disabilities, persons who require language translation, or persons in educational settings: health care services to the ill; law enforcement tracking services under agreement with a law enforcement agency; or automated maritime telecommunications system (AMTS) network control communications. Two-way voice communications and all other types of uses not mentioned above are expressly prohibited.

### **Labeling requirements**

This device may not interfere with TV reception or federal government radar, and must accept any interference received, including interference that may cause undesired operation.

**IMPORTANT NOTE:** To comply with FCC RF exposure compliance requirements, only use supplied antenna that is sold with this transmitter. Use of any other antenna which has not been approved by the manufacturer will violate FCC rules and regulation and void the user's authority to operate this device. This device and its antenna(s) must not be co-located or operating in conjunction with any other antenna or transmitter.

## code of federal regulations (United States only)

### **C.F.R. 21 Part 801.420**

LEXIS FM receivers and FM transmitters, when required, are approved by the Federal Communications Commission in the U.S. and Industry Canada. Other government approvals available upon request. (Other international regulations may also apply.)

Operation is subject to the following two conditions: (1) this device may not cause harmful interference, and (2) this device must accept any interference received, including interference that may cause undesired operation.

Any changes or modifications made to any government-approved element of this instrument, without the expressed approval of the manufacturer in writing, could void the user's authority to operate those elements of the system.

If any changes or modifications are made it will be the responsibility of the party performing the changes or modifications to ensure continued compliance with the FCC regulations and they are required to: (1) File for a new equipment authorization, or (2) Relabel the product(s) with "This product has been modified by [insert the name, address and telephone number of the party performing the modification]."

### **Part 95**

This transmitter is authorized by rule under the Low Power Radio Service (47 C.F.R. Part 95) and must not cause harmful interference to TV reception or United States Navy SPASUR installations. You do not need an FCC license to operate this transmitter. This transmitter may only be used to provide: auditory assistance to persons with disabilities, persons who require language translation, or persons in educational settings; health care services to the ill; law enforcement tracking services under agreement with a law enforcement agency; or automated maritime telecommunications system (AMTS) network control communications. Two-way voice communications and all other types of uses not mentioned above are expressly prohibited.

This device may not interfere with TV reception or federal government radar, and must accept any interference received, including interference that may cause undesired operation.

Operation is subject to the following two conditions: (1) this device may not cause interference, and (2) this device must accept any interference, including interference that may cause undesired operation of the device.

## Lexis frequencies (MHz)

Austria	174.12 174.415 174.60	Greece	173.40 173.99	Spain	173.99 174.12 174.415 174.77 175.70 176.00 181.21
Belgium	181.90 187.50 194.50	Ireland	From 173.7 To 175.1	Sweden	175.70 187.45 194.45 207.85
Finland	173.99	Italy	173.99 174.12 174.415 174.77 175.70 176.00 181.21	UK	173.40 174.12 174.415 174.60 174.77
Germany	173.99 174.075 174.275 174.425 174.60 175.00 175.70 176.00 180.45 187.45 194.45 207.85 208.00 208.10	Luxembourg	173.40		
		Netherlands	207.85 208.00 208.10		
		Norway	173.8125 173.9625		
		Portugal	174.12 174.41		



Date of purchase:

---

My hearing care professional:

---

My serial number:

---

My channel number:

---