

## Important notice

Please familiarize yourself with the entire contents of this guide before using your Amigo R1/R2. The guide contains safety instructions and important information about the use and handling of your Amigo R1/R2.

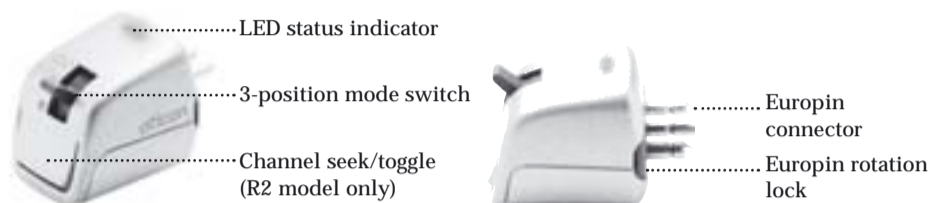
## Introduction

Congratulations on your decision to take the next step in improving classroom understanding.

Amigo R1 and R2 belong to the Amigo FM product family from Oticon – that strives to provide superior solutions for school and home use.

The Amigo product family is extremely versatile, making life much easier in school settings. The receivers can be connected to most types of Behind-the-Ear (BTE) hearing instruments, as well as cochlear implants (CI).

## Features



## Preparing your FM-system

To set up your FM system you need a transmitter, a receiver, a hearing instrument/CI, and a FM adaptor/audio shoe. Attach the audio shoe to the hearing instrument and the receiver to the audio shoe. Set the 3-position mode switch to one of the two ON modes (See the section “3-position mode switch” for further information) and check that it is on the desired channel. Switch on the transmitter to activate the FM-system.

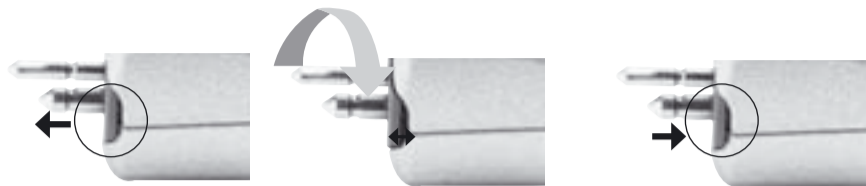
1

## Attaching Amigo receivers to a hearing instrument

To ensure optimal antenna performance, the Amigo receivers must be positioned with the LED facing either to the front or to the back.

The pins on the Amigo receiver can be adjusted to your preferred position in steps of 90°. A locking ring fixes the receiver to prevent unintentional rotation of the pins.

Pull back the tab on BOTH sides of the receiver, move the pins and push the tab back in.



Note: Never use force when changing the pin orientation, as the pins will be permanently damaged if over-rotated.

Attach the audio shoe to the instrument, taking care to align the Europin connectors correctly with the audio shoe.



Note: For hearing instrument compatibility information, please refer to [www.amigofm.com](http://www.amigofm.com)

2

## 3-position mode switch

The switch can be set in the following modes:

○ ○ **FM + Hearing instrument microphone:** This mode combines the signal from the FM transmitter and the hearing instrument microphone.

○ **FM only.** In this mode the hearing instrument microphone is attenuated 20 dB. This setting will typically be useful in very noisy conditions or over greater distances.

● **Off.** In this mode no FM signal is provided. The receiver drains a little power from the hearing instrument's battery in order to remain on standby.

## LED

Amigo receivers are equipped with a Light Emitting Diode (LED). When this light is on, it confirms that:

- The hearing instrument battery is working
- The receiver is on
- The transmitter and receiver are working together correctly
- The child is on the correct channel and receiving a good signal

In short, when the Amigo FM system is working correctly, the LED will be lit.

The LED can be programmed in one of three ways by a T20/T21 or WRP:

**On:** Steady. The LED will shine constantly when an FM signal is present.

**On:** Blink. The LED will blink when an FM signal is present.

**Off:** The LED will remain off even though an FM signal is present.

Note: Amigo receivers have no battery. They draw a small amount of power from the hearing instrument battery.

3

## Push button channel changer (R2 model only)

The Amigo R2 has a push button that can be used to change channels.

- A short press will take you to the next channel in the channel list
- A longer press will launch a search through the pre-defined channel list search. The R2 will lock on to the first channel offering an FM signal.

The R2 only scans the channels that are in the channel list. If it cannot find a channel (because there is no FM signal) it will revert to, and stay on, the original channel.

If more than one channel with a strong FM signal is present, it will take the first one in its channel list. If you want a different channel, apply a long press to the button again.

Note: Never attempt to open the receiver casing.

## Channel management

The Amigo R1/R2 contains a predefined list of channels, all of which are functional. You can customize the channel list using the Amigo T20, T21 or WRP. These units can also be used to wirelessly synchronize the R1 and R2.

Amigo receivers can be programmed to wake up in the channel last used or any specific channel.

If you are not using the Amigo T20/T21 transmitter or WRP, you can still change channels using the push button on the R2.

## Amigo receiver features

Amigo receivers have Sleep Mode functionality. Whenever the FM signal disappears for more than 60 seconds, the unit will automatically “fall asleep” to conserve battery power. A built-in signal sensor will remain awake and scan for an FM signal, and when the FM signal reappears, the receiver will reactivate and the LED will be lit.

4

## Using Amigo with other manufacturers' products

Amigo R1/R2 receivers are compatible with most other manufacturers' FM transmitters; however, Amigo receivers can only be synchronized wirelessly with the Amigo T20, T21 or WRP.

To ascertain whether an FM signal is present you must ensure that both the transmitter and the receiver are on the same channel. To change channel on the R1, you need the the Amigo WRP (or Amigo T20/T21 transmitters). To change channel on the R2, simply turn on the transmitter to one of the channels pre-programmed in the receiver, and press the push-button on the R2.

Note: The channel selected on the transmitter must be one of the channels in the receiver channel list.

## Amigo T20, T21 and WRP

If you use an Amigo T20, T21 or WRP together with the Amigo R1/R2, the following programmable features will be available:

- Multi-channel (can be wirelessly programmed with an Amigo T20, T21 or the WRP)
- LED indicator
- 3-position switch
- Manual channel push button (R2 only)
- Default channel (R1 only)
- Assigning a name to the receiver
- Assigning an ear to the receiver
- FM-only gain
- FM + HA gain
- Confirmation beep

5

## Warnings and precautions

### Amigo parts can be dangerous if swallowed:

The Amigo receivers are not to be played with and should therefore be kept out of children's reach and anyone else who might swallow it or otherwise cause injury to themselves. Special attention should be paid to prevent children from swallowing it and perhaps choking. *If a receiver is swallowed, see a doctor immediately.*

- Never change the battery and never connect the receiver to the hearing instrument in front of infants, small children or persons with learning difficulties.

### System dysfunctions:

The Amigo system will cease to function if the batteries have run out. The system may also produce a high whistling noise (feedback) if the battery is low, or if it is subjected to loud sound while the microphone is off but the receiver is still on. Users should be aware that these sounds should not be confused with warning sounds – e.g. car horns in traffic.

### Use in aircrafts:

- Amigo should not be used on aircrafts without the permission of the flight crew.

*Please note that Amigo can cause interference with other medical devices. Such interference can also be caused by radio signals, power line disturbances, airport metal detectors, electromagnetic fields from other medical devices and electrostatic discharges.*

Hereby Oticon declares that this Amigo is in compliance with the essential requirements and other relevant provisions of Directive 1999/5/EC. Declaration of conformity is available at

Oticon A/S  
Kongebakken 9  
DK-2765 Smørum  
Denmark.

7

## Troubleshooting

Problem	Solution
No sound / no FM reception	Check the battery of the hearing instrument, and that the aid is switched on. Check that the receiver is on and correctly connected. Check that the transmitter is on. Press the SYNC button again.
The receivers cannot be synchronized	Synchronization takes place wirelessly, so if the receiver fails to confirm (with three blinks of the LED), try to move the Amigo T20/T21/WRP closer or a little bit to one side. Then press the SYNC button again.

## Cleaning

The Amigo R1 and R2 are highly moisture resistant, thus easy to clean. They can be cleaned using a damp cloth, and Oticon recommends cleaning on a regular basis.

906 68 311 00 / 07.06 Printed in Denmark

6

### Safety requirements regarding Direct Audio Input (DAI)

- The safety of the use of Amigo with DAI (Direct Audio Input) is determined by the external signal source. When the DAI is connected to AC-operated equipment, this equipment must comply with IEC-60065, IEC-60601 or equivalent safety standards.

### For FCC Part 15

- "This device complies with Part 15 of the FCC Rules. Operation is subject to the following two conditions:(1) this device may not cause harmful interference, and (2) this device must accept any interference received, including interference that may cause undesired operation"

## Manufacturers' warranty

The manufacturer, Oticon, issues a one-year limited warranty to the original consumer of this product.

This warranty comes into effect upon the date of original purchase of this equipment, and will remain in effect for one calendar year from that date.

### What is covered by this warranty?

Any electronic component which, because of workmanship, manufacturing, or design defects, fails to function properly under normal use during the life of this warranty will be replaced or repaired at no charge for parts or labor when returned to the point of purchase. Transportation is paid by the customer. If it is determined that repair is not feasible, the entire unit may be replaced with an equivalent unit upon mutual agreement of the hearing care professional and customer.

Oticon, Inc.  
29 Schoolhouse Rd.  
Somerset, NJ 08873

www.oticonusa.com



Waste from electronic equipment must be handled according to local regulations.



ID: BRG-T21  
IC: 1351B-T21



8

oticon  
PEOPLE FIRST