

QUICK START GUIDE



WHAT IS PILLDRILL?

PillDrill is a smart medication tracking system that simplifies the task of everyday pill taking. It gives reminders when pills need to be taken, tracks what you're taking and how you're feeling, and keeps you connected to the people who matter most. PillDrill is designed to be friendly, smart and—most of all—easy. We believe taking pills should be made simpler, not harder.



HOW DOES PILLDRILL WORK?



REMINDE

THE HUB REMINDS YOU
WHEN DOSES ARE DUE

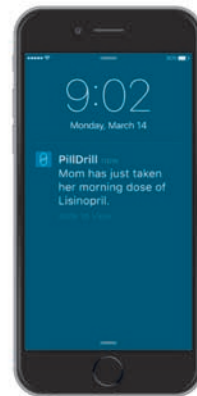
TRACK INTAKE

SCAN YOUR PILL CONTAINER
TO LOG A DOSE AS TAKEN



TRACK WELL-BEING

SCAN THE MOOD CUBE TO LOG HOW YOU'RE FEELING





NOTIFY

REAL-TIME UPDATES INSTANTLY NOTIFY THOSE WHO MATTER MOST

HOW DO THE REMINDERS WORK?

When a dose is due, the Hub glows teal and sounds an alert to get your attention.

The screen displays precise dosage information — the medication name, its tag icon (ie.  or ) , and small dots to indicate quantity.

If an item has already been scanned at the time of its scheduled reminder, the Hub will remain silent. It knows there's no need to alert you.

THE HUB

Sits next to your pills at home, knows your medication schedule, and issues clear audio-visual alerts when it's time for a dose.

Screen

Navigation buttons

Speaker










To register a dose as taken, wave its container in front of the scanning pad.



Light ring

Scanning pad

HOW DO THE BUTTONS WORK?

-  Press to navigate through daily history (**Previous**), current status (**Due Now**), and today's remaining schedule (**Upcoming**).
-  From the clock screen, hold the  button for 3 seconds to adjust your settings.
-  From the clock screen, hold the  button for 3 seconds to put the screen to sleep.
- ANY** During a reminder, press any button to mute the sound and light ring.



WHAT CONTAINERS SHOULD I TAG?

Any medication or supplement you take regularly can be tagged, including as-needed medications.

For irregularly shaped items (e.g. where a scanning tag cannot adhere properly), we recommend you use the elastic tag holders provided in your kit.

SCANNING TAGS

Allow you to "activate" any pill bottle or other container. Attach a tag to any container, and it's ready to scan. Scanning a tagged item instantly registers it as taken.



12 scanning tags
A-L comes in your kit

A small chip inside each tag enables the scan



Attach the tags using adhesive on the back



WEEKLY PILL STRIP

Our version of an AM/PM pillbox. It works the same way, except that each pill pod removes individually and has a built-in scanning tag on its base. Attach as many strips together as you need.



Built-in scanning tag



DO I HAVE TO USE THE WEEKLY PILL STRIP?

It's completely optional. If you use a weekly pill box, ours will work great for you.

If you prefer to keep your meds in their original packaging, feel free to stick to the scanning tags.

Or use both.

HOW DOES THE MOOD CUBE TRACK MY HEALTH?

By tracking how you're feeling in correlation with what you're taking, the Mood Cube allows you to quantify your day-to-day health in a whole new way.

Over time, this data can help you better understand the effect that medications are having on your body and make more informed health decisions.

MOOD CUBE

A wellness tracker with 5 faces: Great, Good, OK, Bad, Awful. Scan any face to instantly communicate how you're feeling to loved ones and track daily health patterns.



THE APP

Keeps you up to speed at all times. Use the app to create and edit a medication schedule, get reminders and log doses on the go, or simply be notified about a loved one's adherence and mood throughout the day.

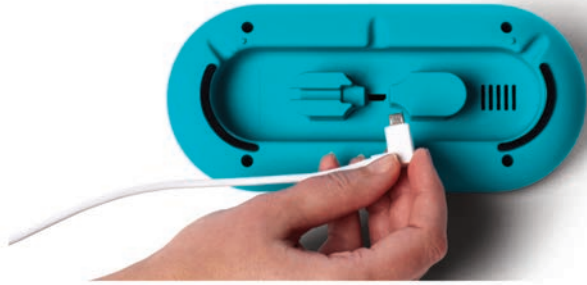


IS A SMARTPHONE REQUIRED?

No. The app provides the fullest experience, but a smartphone is not required to use PillDrill — especially for those less comfortable with technology.

Visit www.pilldrill.com/setup for more information on using PillDrill without the app.

FIRST TIME SET UP



1 Plug the power cord into the Hub (as above). Plug the other end into a wall outlet near your medication.



2 Once plugged in, the Hub will display a welcome screen followed by a screen prompting you to download the app.



Still have
questions?

3 Download the PillDrill app from the App StoreSM, Google PlayTM, or **pilldrill.com/setup** to pair Wi-Fi and set up a medication schedule.

4 That's it! For troubleshooting or to learn more about your PillDrill, visit **www.pilldrill.com/support**.

SETUP OPTIONS

- **I am setting up PillDrill for myself.**

Easy. Just download the app and you'll be provided instructions from there.

- **I am setting up PillDrill for someone who lives near me.**

Download the app at any time on your phone, but go to the user's home to complete the setup process. Wi-Fi pairing is easier that way.

- **I am setting up PillDrill for someone who lives far away.**

With the exception of Wi-Fi pairing, the entire setup process can be done remotely through the app. Visit **www.pilldrill.com/setup** to learn how to pair Wi-Fi remotely.

- **I want to set up PillDrill without using the app.**

No problem. Visit **www.pilldrill.com/setup** to be walked through the web version of the setup process.

PillDrill

PRODUCT INFORMATION

PILLDRILL USER GUIDE: Prior to using PillDrill, please review the information in the User Guide located at www.pilldrill.com/userguide

SAFETY: Use the included power adapter and USB Cable. For further information, see the User Guide.

WARRANTY: This Limited Warranty applies to physical goods purchased from PillDrill, Inc. (the "Product"). This Limited Warranty covers any defects in material or workmanship under normal use during the Warranty Period. During the Warranty Period, PillDrill, Inc. will repair or replace, at no charge, Products or parts of a Product that prove defective because of improper material or workmanship, under normal use and maintenance. PillDrill, Inc. will either repair the Product at no charge, using new or refurbished replacement parts. The Warranty Period for Products purchased from PillDrill, Inc. is 365 days from the date of purchase. A replacement Product or part assumes the remaining warranty of the original Product. This Limited Warranty does not cover any problem that is caused by conditions, malfunctions or damage not resulting from defects in material or workmanship. To obtain warranty service, you must first contact PillDrill, Inc. to determine the problem and the most appropriate solution for you.

LIMITATION OF LIABILITY: In no event shall PillDrill, Inc. be liable to you for any damages resulting from your purchase or use of the Product or related PillDrill, Inc. services such as the PillDrill app or website. In no event shall PillDrill, Inc. be liable for any injury, loss, claim or any indirect or consequential damages including but not limited to, lost profits, revenue, savings, data or for any other damages based either in contract law, tort law or statutory strict liability or otherwise. Where the exclusion or limitation of liability is not allowed by law, our liability shall be limited to the maximum extent permitted by law and in no event shall any liability of PillDrill, Inc. exceed the amount paid by a customer for the Product or related services.

COMPLIANCE:

USA: FCC

This device complies with Part 15 of the FCC Rules. Operation is subject to the following two conditions: (1) this device may not cause harmful interference, and (2) this device must accept any interference received, including interference that may cause undesired operation.

This device acts as a slave and operates in the 2.4GHz (2412-2462 MHz) band.

Ad Hoc functionality is supported but not operable on non-US frequencies. Device operating temperature is between -10°C and 50°C.

NOTE: This equipment has been tested and found to comply with the limits for a Class B digital device, pursuant to part 15 of the FCC Rules. These limits are designed to provide reasonable protection against harmful interference in a residential installation. This equipment generates, uses, and can radiate radio frequency energy and, if not installed and used in accordance with instructions, may cause harmful interference to radio communications. However, there is no guarantee that interference will not occur in a particular installation. If this equipment does cause harmful interference to radio or television reception, which can be determined by turning the equipment off and on, the user is encouraged to try to correct the interference by one or more of the following measures:

- Reorient or relocate the receiving antenna.
- Increase the separation between the equipment and the receiver.
- Connect the equipment to an outlet on a different circuit from that to which the receiver is connected.
- Consult the dealer or an experienced radio/TV technician for help.

Changes or modifications to this unit not expressly approved by the party responsible for compliance could void the user's authority to operate the equipment.

CANADA: IC

This device complies with the Canadian ICES-003 Class B specifications. CAN ICES-3(B)/NMB-3(B)

This Class B device meets all requirements of the Canadian interference-causing equipment regulations. This device complies with Industry Canada license exempt RSS standard(s). Operation is subject to the following two conditions: (1) this device may not cause interference, and (2) this device must accept any interference, including interference that may cause undesired operation of the device.

This device is compliant with general population/uncontrolled RF exposure limits in IC RSS-102.

Cet appareil numérique de la Classe B est conforme à la norme NMB-003 du Canada. CAN ICES-3(B)/NMB-3(B)

Cet appareil numérique de la Classe B respecte toutes les exigences du Règlement sur le matériel brouilleur du Canada.

Cet appareil est conforme aux normes CNR exemptes de licence d'industrie Canada. Le fonctionnement est soumis aux deux conditions suivantes: (1) cet appareil ne doit pas provoquer d'interférences et (2) cet appareil doit accepter toute interférence, y compris celles susceptibles de provoquer un fonctionnement non souhaité de l'appareil.

Cet appareil est conciliant avec les limites d'exposition de RF population/non contenu générales dans IC RSS-102.

EU: CE
PillDrill, Inc., hereby declares that this device is in compliance with the essential requirements and other relevant provisions of RTTE Directive 1999/5/EC. A copy of the EU Declaration of Conformity is available at: www.pilldrill.com/compliance

Applicable CE Marking:



RECYCLING: Ensure that your PillDrill Hub is recycled or disposed of in accordance with your local laws and regulations.

PRIVACY POLICY

PillDrill takes your privacy seriously. We will never share your data with a 3rd party without your permission. Visit www.pilldrill.com/privacy for more information.

GUIDELINES FOR USE

PillDrill is intended to support your medication regimen and other health-related activities. It should not be relied on exclusively or be used in lieu of consulting a medical professional.

FIND US ONLINE

Website: www.pilldrill.com

Email: hello@pilldrill.com

Facebook: [facebook.com/pilldrill](https://www.facebook.com/pilldrill)

Twitter: [@pilldrill](https://twitter.com/pilldrill)

COPYRIGHT

© 2016 by PillDrill, Inc. All rights reserved.
6100 Elton Ave, Las Vegas NV, 89107, USA.

“PillDrill”, “Care That Connects” and “Smart Medication Tracking That Simply Works” are trademarks of PillDrill, Inc. All other trademarks are the property of their respective owners.

Designed by PillDrill, Inc. in the USA.
Assembled in China.

Patents pending.



Care That Connects™

Have questions? Need support?
Contact us at support@pilldrill.com
or visit www.pilldrill.com/support.