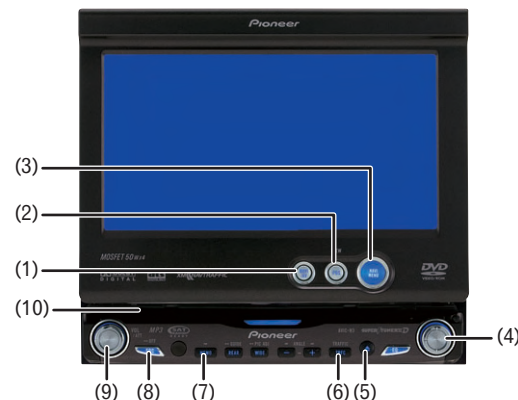


AVIC-N3

Quick Start Guide

This guide is intended to guide you through the basic functions of this navigation system. For details, please refer to the Operation Manual and Hardware Manual provided with the product.

Hardware buttons



(1) NAVI/AV button

Switch between navigation map displays and audio operation displays.

(2) POS button

Display the navigation map.

(3) NAVI MENU button

Access the navigation menu.

(4) Joystick

Use for operation of audio and video source.

(5) EJECT button

Press to eject a disc from the navigation system.

(6) TRFC button *1

Preset button for XM Instant Traffic & Weather audio service.

(7) MEMO button *1

Press and hold for MyMix functionality.

(8) SRC (SOURCE) button

Press to toggle between audio sources.

(9) VOLUME/ATT button

Rotate to increase or decrease the volume.

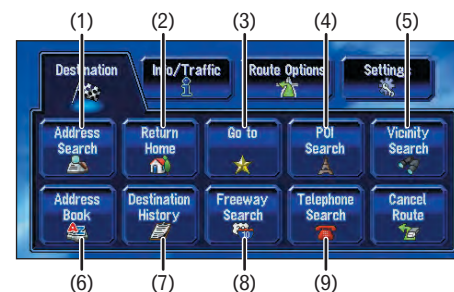
(10) Disc loading slot

Insert a disc to play.

*1 GEX-P10XMT XM Digital Satellite Data & Audio Receiver (sold separately) is required, together with an active subscription.

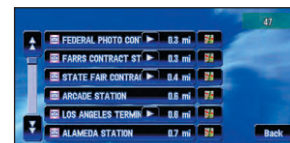
Search function overview

This navigation system has multiple methods for entering your destination.



- (1) Search by address
- (2) Shortcut key for home address
- (3) Shortcut key for favorite destination
- (4) Search stores, restaurants, and other businesses in points of interest database
- (5) Search stores, restaurants, and other businesses in your vicinity

Search result list for vicinity search



- (6) Select a destination from your address book
- (7) Select a previously routed destination
- (8) Select a route to freeway entrance or exit
- (9) Search destination by business telephone number

Searching your destination by address

1 Press or touch in the following order.

NAVI MENU button

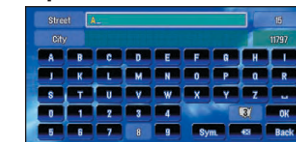
→ Destination tab

→ Address Search

2 Input the house number and then touch "OK".



3 Input the street name.



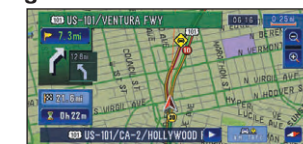
4 Select the street name from list.



When route calculation is complete, navigation guidance begins.



5 Begin driving in accordance with navigation guidance.



This navigation systems gives you route guidance both visually and by voice.

Setting the voice guidance volume



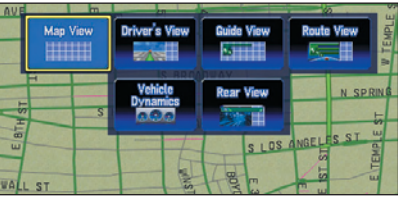
Press or touch the following in order.

NAVI MENU button → Settings tab

→ Volume

Switching the view mode

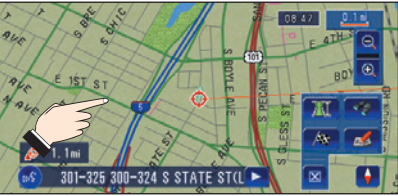
Press **(POS)** button.



This navigation system allows you to select different view modes depending on your preference.

Scrolling the map

Touch where you would like to scroll to on the map screen.



Tapping it once will activate the shortcut keys. Touching it a second time will begin map scroll. To scroll the map, keep touching the map.

Zoom in or zoom out

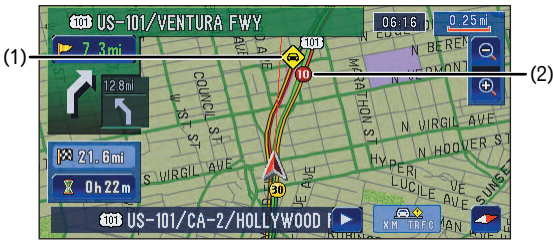


- (1) Direct scale change
- (2) Gradual scale change

Traffic information on the map

Traffic conditions can be overlaid on the map when the optional GEX-P10XMT is connected, together with an active XM subscription.

GEX-P10XMT XM Digital Satellite Data & Audio Receiver (sold separately) is required, together with an active subscription.



(1) Traffic event

- Stopped traffic
- Stop and go traffic
- Closed/blocked roads
- Other event (e.g., accident)

(2) Traffic flow

- The following items represent the traffic flow for the road.
- 5-15 mph (8-24 km/h)
- 20-40 mph (32-64 km/h)
- 45 mph or faster (72 km/h or faster)

The icon indicates that the average speed of the road is over 45 mph (72 km/h).

Switching to the AV screen

1 Press the **NAVI/AV** button to change the screen.



Changing the source

1 Touch the source icon and then select desired source.

Source icon



You can also press the **SRC** button to switch sources.

Operation of the built-in DVD drive

- 1 Insert a disc. Touch **"YES"** to begin the disc playback.
- 2 Adjust the volume.
- 3 Touch the screen to display the touch panel keys for additional control.



Operating the DVD menu

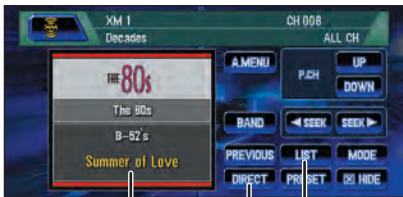
- 1 Touch the screen to display the touch panel keys.
- 2 Touch **"MENU"** or **"TOP M."** to display the DVD menu.
- 3 Touch **→** to display **↔**.
- 4 Touch **↔** to display the touch panel keys to operate the DVD menu.
- 5 Touch **▲, ▼, ◀, ▶** to select the desired menu item.
- 6 Touch **"ENTER"** to start playback.



Operation of XM Satellite Radio

You can use the navigation system to control a XM satellite digital tuner.

GEX-P10XMT XM Digital Satellite Data & Audio Receiver (sold separately) is required, together with an active subscription.



- (1) Shows detailed information of current song
- (2) Use to enter the channel number directly
- (3) Use to toggle between the following displays: Detail information display – Ch Name List – Song Title List – Artist Name List

Listening to your Apple iPod®

You can control your iPod with Dock connector via the touch screen when it is connected to this navigation system via CD-IB100 iPod adapter.



CD-IB100 iPod adapter (sold separately) is required.

- (1) Touch **TOP** to display the search categories.