

2009 HDD NAVIGATION UPGRADE DISC

Upgrade Instructions and Operation Manual Addendum

CNDV-900HD

English

<http://www.pioneer.eu>

Visit www.pioneer.co.uk (or www.pioneer.eu) to register your product.
Visite www.pioneer.es (o www.pioneer.eu) para registrar su producto.
Zum Registrieren Ihres Produktes besuchen Sie bitte www.pioneer.de (oder www.pioneer.eu) .
Visitez www.pioneer.fr (ou www.pioneer.eu) pour enregistrer votre appareil.
Si prega di visitare il sito www.pioneer.it (o www.pioneer.eu) per registrare il prodotto.
Bezoek www.pioneer.nl (of www.pioneer.eu) om uw product te registreren.
Посетите www.pioneer-rus.ru (или www.pioneer.eu) для регистрации приобретенного Вами изделия.

PIONEER CORPORATION
4-1, MEGURO 1-CHOME, MEGURO-KU
TOKYO 153-8654, JAPAN

PIONEER ELECTRONICS (USA) INC.
P.O. Box 1540, Long Beach, California 90801-1540, U.S.A.
TEL: (800) 421-1404

PIONEER EUROPE NV
Haven 1087, Keetberglaan 1, B-9120 Melsele, Belgium/Belgique
TEL: (0) 3/570.05.11

Published by Pioneer Corporation.
Copyright © 2009 by Pioneer Corporation.
All rights reserved.

Printed in Japan
<IRB1017-A> UR

<KYTZF> <09G00000>

Precaution

- DO NOT LOSE SUPPLIED "MEDIA NUMBER CARD". If "MEDIA NUMBER CARD" is lost, re-creation of the "MEDIA NUMBER" is not possible. Also you must submit the "MEDIA NUMBER CARD" for repairs. The card is necessary as proof of authenticity if service is required (including recovery).
- This package is unique, and cannot be installed on more than one unit.
- Web-connected computer is required for online issuance of password.

- Read the entire manual before upgrading the programme of your navigation system.
- The screens shown in the examples may differ from the actual screens.
The actual screens may be changed without notice for performance and function improvements.

Models to be upgraded

This package can upgrade the software programme and database of the following models:
AVIC-HD3, AVIC-HD3II

Manual overview

This manual is a supplementary document that summarises the points that will be renewed after upgrading your navigation system by using this package. The operations other than those described in this manual are basically the same as those at the time you purchased the hardware. Use "Operation Manual" included in the hardware package as your primary reference.

For customers using AVIC-HD3

By upgrading the navigation system with this disc, the points described in this manual are changed.

For customers using AVIC-HD3II or AVIC-HD3 upgraded with CNDV-800HD

By upgrading the navigation system with this disc, following points are changed.

- Map database and Gracenote® Database are renewed.
- Lane information and directional information are added. (Refer to *Display during motorway driving*.)

The other operations are essentially the same as those at the time you purchased the hardware. Use the "Operation Manual" included in the hardware package as your primary reference. ▣

Be sure to read the following descriptions

Licence Agreement

This provides a licence agreement of this software. Be sure to read this before using the software.

About the database

This provides the date when the Map Database was recorded.

Copyright

This provides the copyright of the Map Database.

Other Precautions

This provides the important precautions for using this software. ▣

PIONEER CNDV-900HD

THIS IS A LEGAL AGREEMENT BETWEEN YOU, AS THE END USER, AND PIONEER CORP. (JAPAN) ("PIONEER"). PLEASE READ THE TERMS AND CONDITIONS OF THIS AGREEMENT CAREFULLY BEFORE USING THE SOFTWARE INSTALLED ON THE PIONEER PRODUCTS. BY USING THE SOFTWARE INSTALLED ON THE PIONEER PRODUCTS, YOU AGREE TO BE BOUND BY THE TERMS OF THIS AGREEMENT. THE SOFTWARE INCLUDES A DATABASE LICENSED BY THIRD PARTY SUPPLIER(S) ("SUPPLIERS"), AND YOUR USE OF THE DATABASE IS COVERED BY THE SUPPLIERS' SEPARATE TERMS, WHICH ARE ATTACHED TO THIS AGREEMENT (refer to *Tele Atlas End User Licensing Terms*). IF YOU DO NOT AGREE WITH ALL OF THESE TERMS, PLEASE RETURN THE PIONEER PRODUCTS (INCLUDING THE SOFTWARE, AND ANY WRITTEN MATERIALS) WITHIN FIVE (5) DAYS OF RECEIPT OF THE PRODUCTS, TO THE AUTHORISED PIONEER DEALER FROM WHICH YOU PURCHASED THEM.

1 GRANT OF LICENCE

Pioneer grants to you a non-transferable, non-exclusive licence to use the software installed on the Pioneer products (the "Software") and the related documentation solely for your own personal use or for internal use by your business, only on such Pioneer products. You shall not copy, reverse engineer, translate, port, modify or make derivative works of the Software. You shall not loan, rent, disclose, publish, sell, assign, lease, sublicense, market or otherwise transfer the Software or use it in any manner not expressly authorised by this agreement. You shall not derive or attempt to derive the source code or structure of all or any portion of the Software by reverse engineering, disassembly, decompilation, or any other means. You shall not use the Software to operate a service bureau or for any other use

involving the processing of data for other persons or entities. Pioneer and its licensor(s) shall retain all copyright, trade secret, patent and other proprietary ownership rights in the Software. The Software is copyrighted and may not be copied, even if modified or merged with other products. You shall not alter or remove any copyright notice or proprietary legend contained in or on the Software. You may transfer all of your licence rights in the Software, the related documentation and a copy of this Licence Agreement to another party, provided that the party reads and agrees to accept the terms and conditions of this Licence Agreement.

2 DISCLAIMER OF WARRANTY

The Software and related documentation are provided to you "AS IS". PIONEER AND ITS LICENSOR(S) (for the purpose of provisions 2 and 3, Pioneer and its licensor(s) shall be collectively referred to as "Pioneer") MAKES AND YOU RECEIVE NO WARRANTY, WHETHER EXPRESS OR IMPLIED, AND ALL WARRANTIES OF MERCHANTABILITY AND FITNESS FOR ANY PARTICULAR PURPOSE ARE EXPRESSLY EXCLUDED. SOME COUNTRIES DO NOT ALLOW EXCLUSION OF IMPLIED WARRANTIES, SO THE ABOVE EXCLUSION MAY NOT APPLY TO YOU. The Software is complex and may contain some non-conformities, defects or errors. Pioneer does not warrant that the Software will meet your needs or expectations, that operation of the Software will be error free or uninterrupted, or that all non-conformities can or will be corrected. Furthermore, Pioneer does not make any representations or warranties regarding the use or results of the use of the Software in terms of its accuracy, reliability or otherwise.

3 LIMITATION OF LIABILITY

IN NO EVENT SHALL PIONEER BE LIABLE FOR ANY DAMAGES, CLAIM OR LOSS INCURRED BY YOU (INCLUDING, WITHOUT LIMITATION, COMPENSATORY, INCIDENTAL, INDIRECT, SPECIAL, CONSEQUENTIAL, OR EXEMPLARY DAMAGES, LOST PROFITS, LOST SALES OR BUSINESS, EXPENDITURES, INVESTMENTS, OR COMMITMENTS IN CONNECTION WITH ANY BUSINESS, LOSS OF ANY GOODWILL, OR DAMAGES) RESULTING FROM THE USE OF OR INABILITY TO USE THE SOFTWARE, EVEN IF PIONEER HAS BEEN INFORMED OF, KNEW OF, OR SHOULD HAVE KNOWN OF THE LIKELIHOOD OF SUCH DAMAGES. THIS LIMITATION APPLIES TO ALL CAUSES OF ACTION IN THE AGGREGATE, INCLUDING WITHOUT LIMITATION BREACH OF CONTRACT, BREACH OF WARRANTY, NEGLIGENCE, STRICT LIABILITY, MISREPRESENTATION, AND OTHER TORTS. IF PIONEER'S WARRANTY DISCLAIMER OR LIMITATION OF LIABILITY SET FORTH IN THIS AGREEMENT SHALL OR FOR ANY REASON WHATSOEVER BE HELD UNENFORCEABLE OR INAPPLICABLE, YOU AGREE THAT PIONEER'S LIABILITY SHALL NOT EXCEED FIFTY PERCENT (50%) OF THE PRICE PAID BY YOU FOR THE ENCLOSED PIONEER PRODUCT.

Some countries do not allow the exclusion or limitation of incidental or consequential damages, so the above limitation or exclusion may not apply to you. This warranty disclaimer and limitation of liability shall not be applicable to the extent that any provision of this warranty is prohibited by any country or local law which cannot be pre-empted.

4 EXPORT LAW ASSURANCES

You agree and certify that neither the Software nor any other technical data received from Pioneer, nor the direct product thereof, will be exported outside the country or district (the "Country") governed by the government having

Tele Atlas End User Licensing Terms

THIS IS A LEGAL AGREEMENT (THE "AGREEMENT") BETWEEN YOU, THE END USER, AND PIONEER and its licensors of Data product (sometimes collectively "Licensors"). BY USING YOUR COPY OF THE LICENSED DATA, YOU AGREE TO THE TERMS AND CONDITIONS OF THIS AGREEMENT.

1 Grant of License.

Licensors grant you a non-transferable, non-exclusive license to use the map data and business points of interest information (the "POIs"), (together, the "Data") contained on these discs, solely for personal, non-commercial use and not to operate a service bureau or for any other use involving the processing of data of other persons or entities. You may make one (1) copy of the Data for archival or backup purposes only but you may not otherwise copy, reproduce, modify, make derivative works, derive the structure of or reverse engineer the Data. The Data is restricted for use with the PIONEER Product(s). The Data contains confidential and proprietary information and materials, and may contain trade secrets, so you agree to hold the Data in confidence and in trust and not to disclose the Data or any portions in any form, including by renting, leasing, publishing, leasing, sublicensing or transferring the Data to any third party. You are explicitly prohibited from downloading the digital maps and programmes contained in the Data or from transferring these to another data carrier or computer. You are prohibited from using the POIs (i) to create mailing lists or (ii) for other such similar uses.

2 Ownership.

The Data is copyrighted by the Licensors and the Licensors retain all ownership rights in the Data. You agree not to alter, remove, obliterate, or obscure any copyright notice or proprietary legend contained in or on the Data. The current copyrights are as follows: Data Source © 2009 Tele Atlas © BEV, GZ 1368/2003

© DAV
© IGN France Michelin data © Michelin 2009
© Ordnance Survey of Northern Ireland
© Norwegian Mapping Authority, Public Roads Administration /
© Mapsolutions
© Swisstopo
Topografische ondergrond Copyright © dienst voor het kadaster en de openbare registers, Apeldoorn 2009
© Roskartographia

This product includes mapping data licenced from Ordnance Survey with the permission of the Controller of Her Majesty's Stationery Office. © Crown copyright and/or database right 2009. All rights reserved. Licence number 100026920.

3 Warranty Disclaimer.

THE DATA IS PROVIDED ON AN "AS IS" AND "WITH ALL FAULTS BASIS" AND PIONEER, ITS LICENSORS, AND ITS LICENSED DISTRIBUTORS AND SUPPLIERS (COLLECTIVELY, "SUPPLIERS") EXPRESSLY DISCLAIM ALL OTHER WARRANTIES, EXPRESS OR IMPLIED, INCLUDING BUT NOT LIMITED TO, THE IMPLIED WARRANTIES OF NON-INFRINGEMENT, MERCHANTABILITY, EFFECTIVENESS, COMPLETENESS, ACCURACY, TITLE AND FITNESS FOR A PARTICULAR PURPOSE. PIONEER, ITS LICENSORS AND SUPPLIERS DO NOT WARRANT THAT THE DATA WILL MEET YOUR REQUIREMENTS OR THAT THE OPERATION OF THE DATA WILL BE UNINTERRUPTED OR ERROR FREE. NO ORAL OR WRITTEN ADVICE GIVEN BY PIONEER, ITS LICENSORS, SUPPLIERS OR ANY OF THEIR RESPECTIVE EMPLOYEES CREATES A WARRANTY OR IN ANY WAY INCREASES PIONEER', ITS LICENSORS OR SUPPLIERS LIABILITY AND YOU MAY NOT RELY ON ANY SUCH INFORMATION OR ADVICE. THIS DISCLAIMER IS AN ESSENTIAL CONDITION OF THIS AGREEMENT AND YOU ACCEPT THE DATA ON THIS BASIS.

4 Limitation of Liability.

IN NO EVENT SHALL PIONEER, ITS LICENSORS' OR SUPPLIER' AGGREGATE LIABILITY FOR ALL MATTERS ARISING OUT OF THE SUBJECT MATTER OF THIS AGREEMENT, WHETHER IN CONTRACT, TORT OR OTHERWISE, EXCEED THE AMOUNT PAID BY YOU FOR YOUR COPY OF THE PIONEER DATA. PIONEER, ITS LICENSORS AND SUPPLIERS SHALL NOT BE LIABLE IN ANY MATTER TO YOU FOR ANY SPECIAL, INDIRECT, CONSEQUENTIAL OR INCIDENTAL DAMAGES (INCLUDING DAMAGES FOR LOSS OF BUSINESS PROFITS, BUSINESS INTERRUPTION, LOSS OF BUSINESS INFORMATION, AND THE LIKE) ARISING OUT OF THIS AGREEMENT OR THE USE OF OR INABILITY TO USE THE DATA, EVEN IF PIONEER, ITS LICENSORS OR SUPPLIERS HAVE BEEN ADVISED OF THE POSSIBILITY OF SUCH DAMAGES.

5 Termination.

This Agreement will terminate immediately and automatically, without notice, if you breach any term of this Agreement. You agree that in the event of termination of the Agreement, you shall return the Data (including all documentation and all copies) to PIONEER and its suppliers.

6 Indemnity.

You agree to indemnify, defend and hold PIONEER, its Licensors, and its suppliers (including their respective licensors, suppliers, assignees, subsidiaries, affiliated companies, and the respective officers, directors, employees, shareholders, agents and representatives) free and harmless from and against any liability, loss, injury (including injuries resulting in death), demand, action, cost, expense, or claim of any kind or character, including but not limited to attorney's fees, arising out of or in connection with any use or possession by you of the Data.

7 Additional Provisions with respect to the Great Britain Data and Northern Ireland data only.

- a You are prohibited from removing or obscuring of any copyright, trademark or restrictive legend belonging to Ordnance Survey.
- b The Data may include the data of licensors, including Ordnance Survey. Such Data is provided on an "AS IS" AND "WITH ALL FAULTS BASIS" and the licensors EXPRESSLY DISCLAIM ALL WARRANTIES, EXPRESS OR IMPLIED, INCLUDING BUT NOT LIMITED TO, THE IMPLIED WARRANTIES OF NON-INFRINGEMENT, MERCHANTABILITY, QUALITY, EFFECTIVENESS, COMPLETENESS, ACCURACY, TITLE AND FITNESS FOR A PARTICULAR PURPOSE. THE ENTIRE RISK AS TO THE QUALITY AND PERFORMANCE OF THE DATA PRODUCT RESTS WITH YOU. ORDNANCE SURVEY DOES NOT WARRANT THAT THE DATA WILL MEET YOUR REQUIREMENTS, OR COMPLETE OR ACCURATE OR UP TO DATE OR ACCURATE OR THAT THE OPERATION OF THE DATA WILL BE UNINTERRUPTED OR ERROR FREE. NO ORAL OR WRITTEN ADVICE GIVEN BY ORDNANCE SURVEY, PIONEER OR ITS LICENSORS AND EMPLOYEES CREATES A WARRANTY OR IN ANY WAY INCREASES ORDNANCE SURVEY'S LIABILITY AND YOU MAY NOT RELY ON ANY SUCH INFORMATION OR ADVICE. This is an essential condition of the Agreement and You accept the Data on that basis.

- c IN NO EVENT SHALL ORDNANCE SURVEY BE LIABLE TO YOU FOR MATTERS ARISING OUT OF THE SUBJECT MATTER OF THE AGREEMENTS, WHETHER IN CONTRACT, TORT OR OTHERWISE. THE LICENSORS SHALL NOT BE LIABLE TO YOU FOR ANY SPECIAL, INDIRECT, CONSEQUENTIAL, OR INCIDENTAL DAMAGES (INCLUDING DAMAGES FOR LOSS OF BUSINESS PROFITS, BUSINESS INTERRUPTION, LOSS OF BUSINESS INFORMATION, AND THE LIKE) ARISING OUT OF THE AGREEMENT OR THE USE OF OR INABILITY TO USE THE DATA, EVEN IF THEY HAVE BEEN ADVISED OF THE POSSIBILITY OF SUCH DAMAGES.
- d You are prohibited from using the Data in any printed, published form that results in derivative products to be distributed freely or sold to the public without the prior permission of Ordnance Survey.
- e You shall indemnify and hold harmless Ordnance Survey from and against any claim, demand or action, irrespective of the nature of the claim, demand or action alleging loss, costs, damages, expenses, or injury (including injury from death) resulting from your authorized or unauthorized use, possession, modification, or alteration of the Data.
- f End User accepts the obligation to, on request, provide Ordnance Survey with information on what products and/or services containing and/or derived from the Licensed Products they produce.
- g You are liable to Ordnance Survey in the event of discovery of breach of the aforementioned contractual terms.

8 Additional Provisions with respect to the Denmark Data only.

You shall be prohibited from using the Data to create maps within telephone books, telephone books or other products similar to telephone books (e.g. directories), including such products in digital form.

9 Additional Provisions with respect to the Norway Data only.

You shall be prohibited from using the Data to create general purpose printed or digital maps, which are similar to the basic national products of the Norwegian Mapping Authority. (Any derivative product of the Data of Norway shall be regarded as similar to the basic national products of the Norwegian Mapping Authority if such derivative product has a regional or national coverage, and at the same time has a content, scale and format that are similar to the basic national products of the Norwegian Mapping Authority.)

10 Additional Provisions with respect to the Poland Data only.

You shall be prohibited from using the Data to create printed maps.

11 Miscellaneous.

This is the exclusive and complete Agreement between the Licensors and you regarding its subject matter. Nothing in this Agreement shall create a joint venture, partnership or principal-agent relationship between the Licensors and you. Sections 2 – 4 and 6 – 11 shall survive the expiration or termination of this Agreement. This Agreement may be amended, altered, or modified only by PIONEER. You may not assign any part of this Agreement without PIONEER' prior written consent. You acknowledge and understand that the Data may be subject to restrictions on exportation and agree to comply with any applicable export laws. In the event that any provision or part of a provision of this Agreement is determined to be invalid, illegal, or unenforceable, such provision or part thereof shall be stricken from this Agreement and the remainder of this Agreement shall be valid, legal, and enforceable to the maximum extent possible. Any notice under this Agreement shall be delivered by courier to PIONEER, Attention Legal Department. ▣

About the Data for the Map Database

- This database was developed and recorded up to April 2008. Changes to streets/highways made after that time may not be reflected in this database.
- It is strictly prohibited to reproduce and use any part or the whole of this map in any form without permission from the copyright owner.
- If the local traffic regulations or conditions deviate from this data, follow the local traffic regulations (such as signs, indications, etc.) and conditions (such as construction, weather, etc.).
- The traffic regulation data used in the map database applies only to standard sized passenger vehicles. Note that regulations for larger vehicles, motorbikes, and other non-standard vehicles are not included in the database. ▣

Gracenote® Database

- Part of the data cannot be acquired. The contents of the data in the Gracenote® Database included in the hard disk drive are not 100 % guaranteed.
 - The Gracenote® Database included in the hard disk drive contains the titles for the 300 000 most frequently accessed albums worldwide as of April 2009.
- ▣ Music recognition technology and related data are provided by Gracenote®. ▣

Copyright

Data Source © 2009 Tele Atlas
© BEV, GZ 1368/2003
© DAV
© IGN France Michelin data © Michelin 2009
© Ordnance Survey of Northern Ireland
© Norwegian Mapping Authority, Public Roads Administration /
© Mapsolutions
© Swisstopo

Topografische ondergrond Copyright © dienst voor het kadaster en de openbare registers, Apeldoorn 2009
© Roskartographia

This product includes mapping data licenced from Ordnance Survey with the permission of the Controller of Her Majesty's Stationery Office. © Crown copyright and/or database right 2009. All rights reserved. Licence number 100026920.
© 2009 INCREMENT P CORP. ALL RIGHTS RESERVED. ▣

Other Precautions

- Should the navigation system fail to operate properly, contact your dealer or nearest authorised Pioneer Service Station.
- Do not lose the supplied Media Number Card (MEDIA NUMBER CARD). If the Media Number Card is lost, reissue of the Media Number (MEDIA NUMBER) is not possible. Also you must submit the Media Number Card when repairs are needed. The card is necessary as proof of authenticity if service is required (including recovery).

Setting items to be deleted and initialised

The following settings and items are cleared or returned to the default after upgrade. (The settings and items are not listed below will be retained.)

Map function

View mode and scale setting on the map, direction of the map

Route Setting

Current route and guidance status

[Destination] menu

- The history of "Auto fill-in function" for cities and streets
- Sorting order selected in [Address Book]
- The settings of [Options]([Route Overview])

[Map] menu

All settings

[Settings] menu

[Volume], [Regional Settings](except for [Language])

[Vehicle Dynamics]

Right and left gauge type, [Adjust Style]

Others

Learnt data used in [Learning Route]

The user data stored in the hard disk drive of the unit may be erased if unexpected error occurs during software installation. Pioneer is not responsible for any data loss or unavailability of user data.

Visit Our Web site

Visit us at the following site:

<http://www.pioneer.eu>

- Register your product. We will keep the details of your purchase on file to help you refer to this information in the event of an insurance claim such as loss or theft.

Preparation for upgrade

Checking the device number

First, check your device number (DEVICE NUMBER, displayed such as Device# or Device Number) of your navigation system for later procedures. To display the device number, do the following.

1 Turn your navigation system on.

2 Press the MENU button to display the navigation menu.

Navigation menu appears.

3 Touch the key in the following order in the navigation menu.

[Settings] → [Hardware] → [Service Info Screen]

4 Write down your "Device Number" onto the supplied "MEDIA NUMBER CARD" to avoid mistakes.

- Also write down "Version" information which would be used to confirm completion of the update.

Getting the password for authentication

For upgrade, an unique password issued online is necessary. Access the website with your PC and get your password. The following information is required.

- Media Number (MEDIA NUMBER) printed on supplied Media Number Card (MEDIA NUMBER CARD)
- Device Number (DEVICE NUMBER) of your navigation system

1 Access on the following web site to issue your password.

<http://www.pioneer.eu/software>

For issuing the password, follow the instruction on the website.

2 Record the password that you received.

You need to input this password accurately. Write down your password to avoid mistakes.

Instructions for upgrading

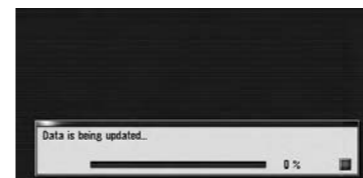
This section describes the upgrade procedures for your navigation system.

- The update has two phases.

Important notice:

For users who use AVIC-HD3II or use the system upgraded to CNDV-800HD, updating another software programme will begin first. Note the same limitations written in Phase 2 when updating the programme.

Phase 1; Update the database



In this phase, take notice of the followings:

- All the functions other than AM and FM are disabled during update. You can perform simplified operations by using the TRK (◀/▶) button and VOL (▼/▲) button. (We recommend changing the AV source to AM or FM before you start the update.)
- The update takes approximately 1 hours in total.
- If you turn the ignition switch off (the navigation system turns off) or eject the upgrade disc, the update resumes when the navigation system turns on or the disc is reinserted.

Instructions for upgrading

Phase 2; Update the system programme



In this phase, take notice of the followings:

- No functions are available.
- The update takes approximately 10 minutes.
- NEVER stop the engine of your vehicle nor turn off the power supply to the navigation system until the installation is completed. Turning the power off in this phase causes a malfunction or failure of the navigation system.

Upgrade procedures

1 Park your vehicle in a safe place.

Leave the engine on, and make sure that the handbrake is applied.

2 Press the MAP button to display the current location.



Be sure to display the map of current position. The updating cannot start at the other screens, such as the scroll mode, the navigation menu and AV screen.

3 Press OPEN CLOSE button and insert the upgrade disc into the disc loading slot.

CAUTION

For users who use AVIC-HD3II or use the system upgraded to CNDV-800HD, updating another software programme will begin first.

While this screen is visible, NEVER switch the key position from ACC or turn off the navigation system.



After the installation is complete, the navigation system restarts.

Check the details of the caution message and touch [OK].

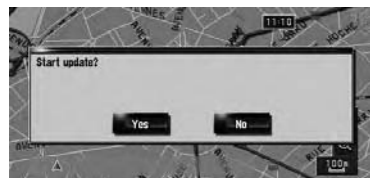
- The users who use other models can skip this caution and proceed to the next step.

The message confirming whether or not to start the update will appear.

- If the message doesn't appear, eject the disc and display the map of current position and then reinsert the disc.

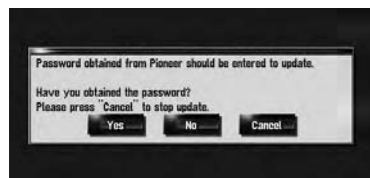
Instructions for upgrading

4 Touch [Yes].



- To cancel the update, touch [No].

5 Touch [Yes].



The message “**Password obtained from Pioneer should be entered to update. Have you obtained the password? Please press “Cancel” to stop update.**” appears.

To start the updating, touch [Yes].

Alternative options:

[No]

Shows “Device Number” (Device#) of your navigation system.

[Cancel]

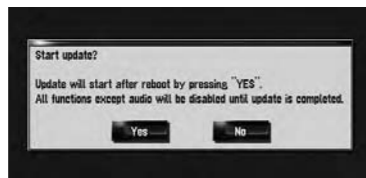
Cancel the update.

6 Enter the password for authentication that you obtained, then touch [OK].



After you touch [OK], the system starts the authentication. When the authentication is finished properly, a message for confirmation will appear.

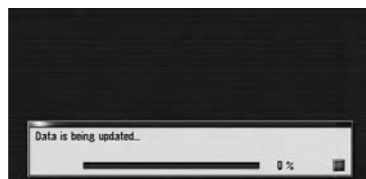
7 Touch [Yes] to start the update.



The navigation system restarts and then the installation begins.

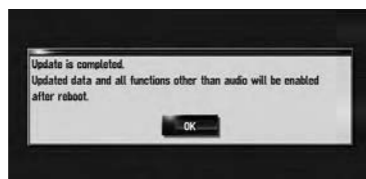
After you touch [Yes] in this screen, you cannot abort the updating until the installation of the system programme finishes.

The update takes approximately 1 hours in total.



When the update of map database is completed, the finished message appears.

8 Touch [OK] to restart the system.



- After touching [OK], the installation of system programme begins.

Instructions for upgrading



CAUTION
While this screen is visible, **NEVER** switch the key position from ACC or turn off the navigation system.



After the installation is complete, the navigation system restarts.

9 Check the details of the caution message and touch [OK].

10 Touch [OK].

The map of your surroundings is displayed. You can operate the navigation system by touching keys displayed on the screen as usual.

11 Press the OPEN CLOSE button and press the EJECT button to eject the upgrade disc.

Checking whether the upgrade was done properly

Display “**Service Information**” screen to compare the current version number with the previous one.

- For more details of the operation, refer to *Checking the device number.*

Renewed Points through this Upgrade

If you upgrade your navigation system by this disc, the system will have the following changes.

Renewal data

The following data are updated:

- Map database
- Gracernote® Database

POI data coverage

Approximately 43 000 POIs are included in the database.

- Some facilities and categories used in **POI Search**, **Vicinity Search**, and **Overlay POI** will be modified.
- For the additional categories that can be used on the voice recognition, see “*Category list for vicinity search (Renewal)*”.
- Some POI information may not be accurate or may become inaccurate through the passage of time. Please directly contact the POI to verify the accuracy of the information about the POI which appears in this database. POI information is subject to change without notice.

Display during motorway driving

When you drive on a motorway, you'll get the following informations.

- If the data for these items is not contained in the hard disk drive, the information is not available even if there are the signs on the actual road.
- Informations appear only when the route is set.

Renewed Points through this Upgrade

Lane information

In certain locations of the motorway, lane information is available, indicating the recommended lane to be in to easily manoeuvre the next guidance.

Lane information

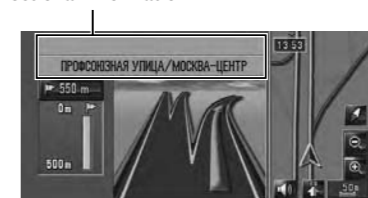


Lane information is displayed the first time there is a voice guidance on your route. The white arrow on the green background indicates the recommended lane. If the next travelling direction screen is displayed when you approach a interchange, junction, or exit, the lane information disappears.

Directional information

Directional informations may be displayed when in the vicinity of interchanges and exits.

Directional information



Dialling a facility's phone number (Only for AVIC-HD3)

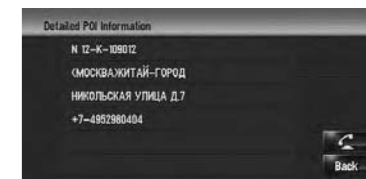
To use the mobile phone featuring Bluetooth wireless technology on the navigation system, the Bluetooth unit (ND-BT1) (sold separately) is required.

You can make a call to facilities with phone number data.

1 Perform [POI Search] or [Vicinity Search] and display the detail information.

2 Touch of the entry you want to call. The detail screen appears.

3 Touch to make a call.



To cancel the call after the system starts dialling, touch .

4 To end the call, touch at the top right of the screen.

Dialling from the map (Only for AVIC-HD3)

You can make a call by selecting the icon of a registered location icon from the map screen.

- You cannot make a call to locations that have no phone number data.

1 Scroll the map, and place the cursor on an icon on the map.

2 Touch .



The detail screen appears.

3 Touch to make a call.

To cancel the call after the system starts dialling, touch .

4 To end the call, touch at the top right of the screen.

Category list for vicinity search (Renewal)

The following categories are modified or added as the sub-category.

For customers using AVIC-HD3

Category name	Old	New
<i>Hotel</i>	—	<i>PARK INN</i>
<i>Sport</i>	—	<i>Water Sports</i>
<i>Leisure</i>	<i>Yacht Basin</i>	<i>Marina</i>
	—	<i>Tourist Office</i>
<i>Car Dealer</i>	<i>ALFA ROMEO</i>	(Not available.)
	<i>LANCIA</i>	(Not available.)
	<i>SEAT</i>	(Not available.)
	—	<i>MERCEDES-BENZ TRUCKS</i>
	—	<i>SSANGYONG</i>
—	<i>VOLVO TRUCKS</i>	
<i>Vehicle Repair Facility</i>	<i>AUDI, Repair</i>	(Not available.)
	<i>CITROEN, Repair</i>	(Not available.)
	<i>FORD, Repair</i>	(Not available.)
	<i>MAZDA, Repair</i>	(Not available.)
	<i>NISSAN, Repair</i>	(Not available.)
	<i>OPEL, Repair</i>	(Not available.)
	<i>ROVER, Repair</i>	(Not available.)
	<i>VOLKSWAGEN, Repair</i>	(Not available.)
	<i>VOLVO, Repair</i>	(Not available.)
	—	<i>HONDA, Repair</i>
	—	<i>MERCEDES-BENZ, Repair</i>
—	<i>mitsubishi, Repair</i>	
—	<i>SUZUKI, Repair</i>	



Category list for vicinity search (Renewal)

For customers using AVIC-HD3II or AVIC-HD3 upgraded with CNDV-800HD

Category name	Old	New
<i>Petrol Station</i>	<i>LOTOS</i>	(Not available.)
<i>Leisure</i>	<i>Camping</i>	(Not available.)
<i>Car Dealer</i>	<i>SEAT</i>	(Not available.)
<i>Vehicle Repair Facility</i>	<i>AUDI, Repair</i>	(Not available.)
	<i>FORD, Repair</i>	(Not available.)
	<i>NISSAN, Repair</i>	(Not available.)
—	<i>VOLVO, Repair</i>	(Not available.)

