

**Pioneer**

**AS-BT200**

BLUETOOTH® ADAPTER  
ADAPTATEUR BLUETOOTH®  
BLUETOOTH® ADAPTER  
ADATTATORE BLUETOOTH®  
BLUETOOTH® ADAPTER  
ADAPTADOR BLUETOOTH®  
АДАПТЕР BLUETOOTH®

 **Bluetooth®**

Operating instructions  
Mode d'emploi  
Bedienungsanleitung  
Istruzioni per l'uso  
Handleiding  
Manual de instrucciones  
Инструкции по эксплуатации

## IMPORTANT



The lightning flash with arrowhead symbol, within an equilateral triangle, is intended to alert the user to the presence of uninsulated "dangerous voltage" within the product's enclosure that may be of sufficient magnitude to constitute a risk of electric shock to persons.

### CAUTION

**RISK OF ELECTRIC SHOCK  
DO NOT OPEN**

**CAUTION:**  
TO PREVENT THE RISK OF ELECTRIC SHOCK, DO NOT REMOVE COVER (OR BACK). NO USER-SERVICEABLE PARTS INSIDE. REFER SERVICING TO QUALIFIED SERVICE PERSONNEL.



The exclamation point within an equilateral triangle is intended to alert the user to the presence of important operating and maintenance (servicing) instructions in the literature accompanying the appliance.

D3-4-2-1-1\_A1\_En

This product is for general household purposes. Any failure due to use for other than household purposes (such as long-term use for business purposes in a restaurant or use in a car or ship) and which requires repair will be charged for even during the warranty period.

K041\_A1\_En

## WARNING

This equipment is not waterproof. To prevent a fire or shock hazard, do not place any container filled with liquid near this equipment (such as a vase or flower pot) or expose it to dripping, splashing, rain or moisture.

D3-4-2-1-3\_A1\_En

## [European model only]



If you want to dispose this product, do not mix it with general household waste. There is a separate collection system for used electronic products in accordance with legislation that requires proper treatment, recovery and recycling.

Private households in the member states of the EU, in Switzerland and Norway may return their used electronic products free of charge to designated collection facilities or to a retailer (if you purchase a similar new one).

For countries not mentioned above, please contact your local authorities for the correct method of disposal.

By doing so you will ensure that your disposed product undergoes the necessary treatment, recovery and recycling and thus prevent potential negative effects on the environment and human health.

K058b\_A1\_En

2

En

**[U.S. model only]**

**Information to User**

Alterations or modifications carried out without appropriate authorization may invalidate the user's right to operate the equipment.

D8-10-2\_A1\_En

**NOTE:**

This equipment has been tested and found to comply with the limits for a Class B digital device, pursuant to Part 15 of the FCC Rules. These limits are designed to provide reasonable protection against harmful interference in a residential installation. This equipment generates, uses, and can radiate radio frequency energy and, if not installed and used in accordance with the instructions, may cause harmful interference to radio communications. However, there is no guarantee that interference will not occur in a particular installation. If this equipment does cause harmful interference to radio or television reception, which can be determined by turning the equipment off and on, the user is encouraged to try to correct the interference by one or more of the following measures:

- Reorient or relocate the receiving antenna.
- Increase the separation between the equipment and receiver.
- Connect the equipment into an outlet on a circuit different from that to which the receiver is connected.
- Consult the dealer or an experienced radio/TV technician for help.

D8-10-1-2\_A1\_En

**CAUTION**

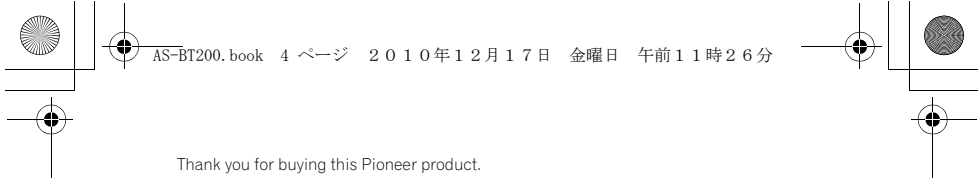
This product satisfies FCC regulations when shielded cables and connectors are used to connect the unit to other equipment. To prevent electromagnetic interference with electric appliances such as radios and televisions, use shielded cables and connectors for connections.

D8-10-3a\_A1\_En

**[Canadian model only]**

This Class B digital apparatus complies with Canadian ICES-003.

D8-10-1-3\_A1\_En



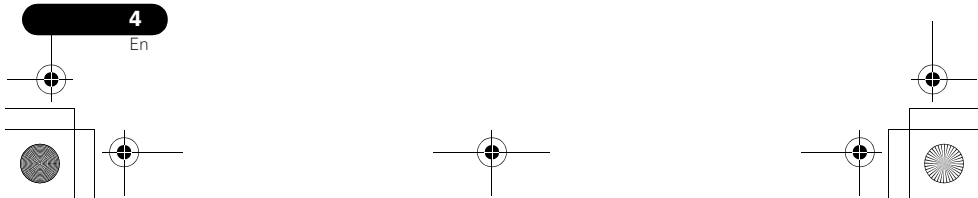
Thank you for buying this Pioneer product.  
Please read through these operating instructions so you will know how to operate your model properly. After you have finished reading the instructions, put them away in a safe place for future reference.



Register your product at  
<http://www.pioneerelectronics.com> (US)  
<http://www.pioneerelectronics.ca> (Canada)

- **Protect your new investment**  
The details of your purchase will be on file for reference in the event of an insurance claim such as loss or theft.
- **Receive free tips, updates and service bulletins on your new product**
- **Improve product development**  
Your input helps us continue to design products that meet your needs.
- **Receive a free Pioneer newsletter**  
Registered customers can opt in to receive a monthly newsletter.

Discover the benefits of registering your product online at  
<http://www.pioneer.co.uk> (or <http://www.pioneer.eu>).



## Radio wave caution

This unit uses a 2.4 GHz radio wave frequency, which is a band used by other wireless systems (see list below). To prevent noise or interrupted communication, do not use this unit nearby such devices, or make sure these devices are switched off during use.

- Cordless phones
- Cordless facsimiles
- Microwave ovens
- Wireless LAN devices (IEEE802.11b/g)
- Wireless AV equipment
- Wireless controllers for game systems
- Microwave-based health aids
- Some baby monitors

Other, less common, equipment that may operate on the same frequency:

- Anti-theft systems
- Amateur radio stations (HAM)
- Warehouse logistic management systems
- Discrimination systems for train or emergency vehicles

### Note

- In the event noise appears in your television image, there is the possibility that a *Bluetooth*<sup>®</sup> wireless technology enabled device or this unit (including products supported by this unit) are causing signal interference with the antenna input connector of your television, video, BS tuner, CS tuner, etc. In this event, increase the distance between the antenna input connector and the *Bluetooth* wireless technology enabled device or this unit (including products supported by this unit).

- If there is something obstructing the path between this unit (including devices supported by this unit) and the device equipped with *Bluetooth* wireless technology (such as a metal door, concrete wall, or insulation containing tinfoil), you may need to change the location of your system to prevent signal noise and interruptions.

## Scope of operation

Use of this unit is limited to home use. (Transmission distances may be reduced depending on communication environment).

In the following locations, poor condition or inability to receive radio waves may cause the audio to be interrupted or stopped:

- In reinforced concrete buildings or steel-framed or iron-framed buildings.
- Near large metallic furniture.
- In a crowd of people or near a building or obstacle.
- In a location exposed to the magnetic field, static electricity or radio wave interference from radio communication equipment using the same frequency band (2.4 GHz) as this unit, such as a 2.4 GHz wireless LAN device (IEEE802.11b/g) or microwave oven.
- If you live in a heavily populated residential area (apartment, townhouse, etc.) and if your neighbor's microwave is placed near your system, you may experience radio wave interference. If this occurs, move your unit to a different place. When the microwave is not in use, there will be no radio wave interference.

### Radio wave reflections

The radio waves received by this unit include the radio wave coming directly from the device equipped with *Bluetooth* wireless technology (direct wave) and waves coming from various directions due to reflections by walls, furniture and building (reflected waves). The reflected waves (due to obstacles and reflecting objects) further produce a variety of reflected waves as well as variation in reception condition depending on locations. If the audio cannot be received properly due to this phenomenon, try moving the location of the device equipped with *Bluetooth* wireless technology a little. Also note that audio may be interrupted due to the reflected waves when a person crosses or approaches the space between this unit and the device equipped with *Bluetooth* wireless technology.

### Precautions regarding connections to products supported by this unit

- Complete connections for all devices supported by this unit, including all audio cords and power cables before connecting them to this unit.
- After completing connections to this unit, check the audio and power cables to confirm that they not twisted together.
- When disconnecting this unit, confirm that you have sufficient working space in the surrounding area.
- When changing connections of audio or other cables for products supported by this unit, confirm that you have sufficient working space in the surrounding area.

### CAUTION

- Always connect this unit to the ADAPTER PORT of the product supported by this unit. If connections are made to a connector other than the ADAPTER PORT of the supported product, malfunctions or damage may result to this unit or the supported product.
- Please note that Pioneer is not responsible for damages that result from connecting this unit to a connector other than the ADAPTER PORT of a supported product.

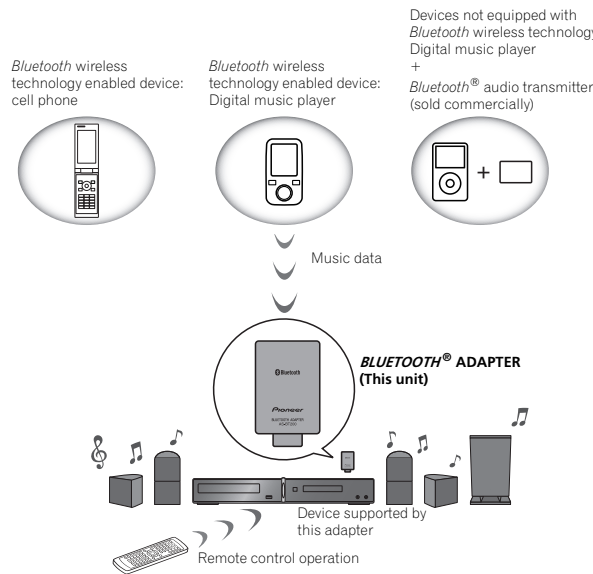
## What can you do with this adapter?

### Wireless music play

When this unit is connected to a supported device, a product equipped with *Bluetooth* wireless technology (portable cell phone, digital music player, etc.) can be used to listen to music wirelessly<sup>1</sup>. Also, by using a commercially available transmitter supporting *Bluetooth* wireless technology, you can listen to music on a device not equipped with *Bluetooth* wireless technology. This unit supports SCMS-T contents protection, so music can also be enjoyed on devices equipped with SCMS-T type *Bluetooth* wireless technology.

### Remote control operation

A remote supported by this unit allows you to perform play, stop and other operations.<sup>2</sup>



### Note

- 1 It must be necessary that the *Bluetooth* wireless technology enabled device supports A2DP profiles.
- 2 • It must be necessary that the *Bluetooth* wireless technology enabled device supports AVRCP profiles.  
• Remote control operations cannot be guaranteed for all *Bluetooth* wireless technology enabled devices.

## To listen to music

### CAUTION

- When performing connections, always turn off power to the supported device first.
- In the event this unit does not operate properly, turn off power to the supported device, then check its connections to this unit. Also, consult the operating instructions for the supported device.

#### 1 Connect this unit to the ADAPTER PORT of the supported device.

#### 2 Turn on power to the supported device.

#### 3 Perform *Bluetooth* pairing.

Register this unit and the device connected by *Bluetooth* wireless technology.

#### 4 Connect to a device equipped with *Bluetooth* wireless technology.

Begin playback of music on the device connected to this unit with *Bluetooth* wireless technology.

**For details regarding pairing and operation, consult the operating instructions for the device supported by this unit.**

### Note

- This *Bluetooth* ADAPTER AS-BT200 is compatible with the earlier *Bluetooth* ADAPTER AS-BT100, so it can be used with products supported by that unit. When reading instruction manuals for products supported by the AS-BT100, merely read "AS-BT200" in place of AS-BT100.
- This unit complies with *Bluetooth* Specifications Ver. 2.1. When this unit and another device equipped with *Bluetooth* wireless technology both comply with *Bluetooth* Specification Ver. 2.1, pairing of the two may be possible without the need for inputting a "passcode" (PIN code).
- While using this unit via a *Bluetooth* connection to listen to music on a device equipped with *Bluetooth* wireless technology, do not make another *Bluetooth* connection between that device and any other device. If the *Bluetooth* wireless technology-equipped device already has a *Bluetooth* connection with some device other than this unit, disconnect that device before connecting this unit.

#### About *Bluetooth* wireless technology

- *Bluetooth* wireless technology is a short-range wireless technology designed to allow communication between digital devices. Since radio waves are used, the communicating devices do not need to be facing each other.
- The *Bluetooth*® word mark and logos are registered trademarks owned by Bluetooth SIG, Inc. and any use of such marks by *Pioneer Corporation* is under license. Other trademarks and trade names are those of their respective owners.

8

En



## Glossary

- **Pairing:**  
To preregister the devices to be connected using *Bluetooth* wireless technology.
- **A2DP (Advanced Audio Distribution Profile)**  
A profile used to transmit audio using *Bluetooth* wireless technology.
- **AVRCP (Audio/Video Remote Control Profile)**  
A profile used for remote control of an AV device using *Bluetooth* wireless technology.
- **SCMS-T**  
A form of contents protection used by *Bluetooth* wireless technology.

## Additional Information

### Specifications

Power	DC 5 V
Version	<i>Bluetooth</i> Specification Ver. 2.1 + EDR
Output	<i>Bluetooth</i> Specification Class 2
Estimated line-of-sight transmission distance*	About 10 m
Frequency range	2.4 GHz
Modulation	FH-SS (Frequency Hopping Spread Spectrum)
Supported <i>Bluetooth</i> profiles	A2DP, AVRCP, SPP
Supported Codec	SBC (Subband Codec)
Supported contents protection	SCMS-T
External dimensions	30.5 mm (W) x 9.0 mm (H) x 50 mm (D) 1 1/4 in. (W) x 3/8 in. (H) x 2 in. (D)
Weight	About 11 g/0.4 oz

\* The line-of-sight transmission distance is an estimate. Actual transmission distances supported may differ depending on surrounding conditions.



### Note

Specifications and design subject to modification without notice.

### Cleaning the unit

Use a polishing cloth or dry cloth to wipe off dust and dirt.

When the surface is dirty, wipe with a soft cloth dipped in some neutral cleanser diluted five or six times with water, and wrung out well, and then wipe again with a dry cloth. Do not use furniture wax or cleansers.

Never use thinners, benzene, insecticide sprays or other chemicals on or near this unit, since these will corrode the surface.

## **ADDITIONAL INFORMATION for Bluetooth Adapter**

### **For US model**

#### **FCC WARNING**

Changes or modifications not expressly approved by the party responsible for compliance could void the user's authority to operate the equipment.

This transmitter must not be co-located or operated in conjunction with any other antenna or transmitter.

### **For US and Canadian model**

This device complies with Part 15 of FCC Rules and Industry Canada licence-exempt RSS standard(s). Operation is subject to the following two conditions: (1) this device may not cause interference, and (2) this device must accept any interference, including interference that may cause undesired operation of this device.

Le présent appareil est conforme aux la partie 15 des règles de la FCC et CNR d'Industrie Canada applicables aux appareils radio exempts de licence. L'exploitation est autorisée aux deux conditions suivantes : (1) l'appareil ne doit pas produire de brouillage, et (2) l'utilisateur de l'appareil doit accepter tout brouillage radioélectrique subi, même si le brouillage est susceptible d'en compromettre le fonctionnement.

This equipment complies with FCC/IC radiation exposure limits set forth for an uncontrolled environment and meets the FCC radio frequency (RF) Exposure Guidelines in Supplement C to OET65 and RSS-102 of the IC radio frequency (RF) Exposure rules. This equipment has very low levels of RF energy that are deemed to comply without testing of specific absorption ratio (SAR).

Cet équipement est conforme aux limites d'exposition aux rayonnements énoncées pour un environnement non contrôlé et respecte les règles les radioélectriques (RF) de la FCC lignes directrices d'exposition dans le Supplément C à OET65 et d'exposition aux fréquences radioélectriques (RF) CNR-102 de l'IC. Cet équipement émet une énergie RF très faible qui est considérée conforme sans évaluation du débit d'absorption spécifique (DAS).

### **For Canadian model**

Under Industry Canada regulations, this radio transmitter may only operate using an antenna of a type and maximum (or lesser) gain approved for the transmitter by Industry Canada. To reduce potential radio interference to other users, the antenna type and its gain should be so chosen that the equivalent isotropically radiated power (e.i.r.p.) is not more than that necessary for successful communication.

Conformément à la réglementation d'Industrie Canada, le présent émetteur radio peut fonctionner avec une antenne d'un type et d'un gain maximal (ou inférieur) approuvé pour l'émetteur par Industrie Canada. Dans le but de réduire les risques de brouillage radioélectrique à l'intention des autres utilisateurs, il faut choisir le type d'antenne et son gain de sorte que la puissance isotrope rayonnée équivalente (p.i.r.e.) ne dépasse pas l'intensité nécessaire à l'établissement d'une communication satisfaisante.