



Bluetooth Timer Remote Control BG-100



ID: B019832



Product Manual

Overview

Thank you for purchasing PIXEL product. Please read and fully understand this manual before use. BG-100 is a high performance Bluetooth Timer Remote Control. It can remote control the camera under long distance with single shooting, continuous shooting, Bulb shooting, 2-second delay shooting and timer shooting. All functions are available via Apple devices with Bluetooth for easy remote shooting. (Bluetooth version: 4.0 or higher).

Cautions

- ▲ Before installing, make sure the camera is powered off.
- ▲ This product is an electronic device, it may be affected by external environmental factors and cause the camera cannot or malfunction. Nevertheless, this possibility is very small.
- ▲ Do not let the components suffered from strong vibration, otherwise it may cause the product failure.
- ▲ When not in use for long durations, please turn off the power of the transmitter and the receiver and remove the batteries.
- ▲ The batteries should be installed correctly. Reverse polarity may cause batteries to leak corrosive liquids, heat or explosion.
- ▲ When connecting the cable to the device, do not pull the wires directly.
- ▲ Do not store in a high temperature, such as a closed car under direct sunlight, the dashboard and other high-temperature areas.
- ▲ Keep dry, do not touch the product with wet hands. Do not immerse in water or exposed to rain as this may lead to device failure.
- ▲ Do not use near flammable gases. Failure to follow this warning may cause explosion or fire.
- ▲ This product involves batteries, please strictly follow the instruction for proper operation. Failure to follow this may cause explosions, fire or personal injury.

Items Included

After unpacking, please check if the below items are included in the package. If there is any item missing, please contact your dealer.

Bluetooth Timer Remote Control	1 pc
Shutter Connecting Cable	2 pcs For Canon/ 2 pcs For Nikon/ 1 pc For Sony
Manual	1 pcs (this manual)

Name of Each Part



- ❶ Light Indicator: On standby mode, green light will flash slowly. When focusing, green light will flash. During shooting, red light will flash.
- ❷ Shutter Button: Half-press to focus mode, full-press to shooting mode.
- ❸ Power Switch: Press this button for 3 seconds to turn on/off.
- ❹ Shutter Interface: Shutter control output interface, shutter connecting cable is required to connect camera shutter interface when in use.
- ❺ Bluetooth ID Number: BG-100 Bluetooth ID number, every BG-100 has a unique ID number.

Power Indicator

- 1 • BG-100 is still under shutdown status when you install the batteries under power off situation. To use, please press the power key to switch on the device. Under shutdown status, press the power key for 2 seconds, after the green light indicator was on for 2 seconds, the device was turned on.
 - BG-100 was still switched on when you remove and re-install the batteries under power on status. To turn off, please press off the power key. Under power on situation, press the power key for 2 seconds, after the red light indicator was on for 2 seconds, the device was turned off.
- 2 • After switched on, the red light indicator will flash once every second if the device is not connected. If the device properly connected, the green light indicator flashes once every two seconds.
 - After the device is properly connected, the focus light indicator is green. Red light is lit when shooting.
 - After the device is properly connected, when you start the delay shooting, the green light flashes once every second.
 - After the device is properly connected, when you start to plan timer shooting, the green light flashes twice every second.
 - After the device is properly connected, when you executive the timer shooting and improperly disconnected or the device is withdrawn, BG-100 will continue to perform regularly on the timer shooting, the red light indicator flashes twice every second.
- 3 • When the battery power of the device is low, the red light continues to flash four times.
 - * It is recommended when the device is not in use, please remove the batteries and keep the device properly.

Getting Started

- Please use Apple mobile devices with Bluetooth such as iPhone, iPad. Search the name of the software by entering "Pixel DSLR shutter controller" in APP Store on those devices, then download and install.
- Please turn on the Bluetooth feature before use. This software only supports Bluetooth version 4.0 and above. Make sure the camera and Bluetooth device BG-100 is well connected.

2

- Turn on the power switch of the BG-100 to start using, click Pixel Bluetooth software which was installed on the connected devices. Once it was successfully connected with BG-100 (figure 1), Bluetooth ID number will be displayed. Click the ID number to enter the operation interface of Bluetooth Timer Remote Control (figure 2). If you cannot connect or BG-100 is not turned on, (figure 1) ID number is not displayed. When using multiple sets of BG-100 in the same environment, it will display multiple ID numbers. Then, you need to select the corresponding ID number and log in. If you can't access by tapping the ID number, please quit the software and turn off the power supply of BG-100. Re-click the software and turn on BG-100.



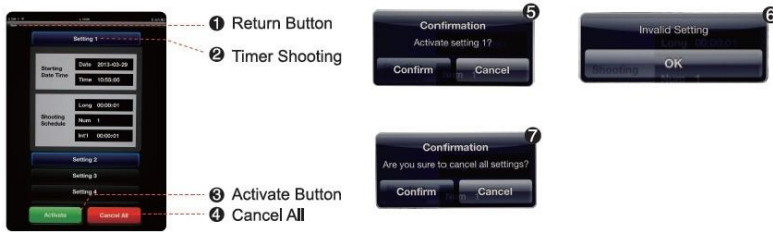
Shooting Control



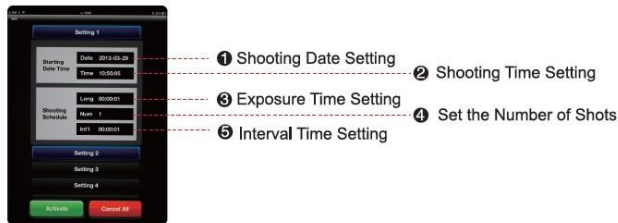
- ❶ Single Shooting: Click this button to focus mode, slide to the right to single shooting mode.
- ❷ Continuous Shooting Mode: Click this button to focus mode, slide to the right to continuous shooting mode. This function can work with the shooting mode of camera.
- ❸ Bulb Mode: Click this button to focus mode, slide to the right to Bulb shooting mode. This function can work with the Bulb shooting mode of camera.
- ❹ 2S Delay Shooting: Click this button to focus mode, slide to the right to 2S (second) delay shooting mode.
- ❺ Timer Shooting: You can set 1-10 different timer shooting. You can also set "date" and "time", "exposure time", "number of shots" and "interval".

Note: When the camera lens function set to auto focus AF, and most of the cameras cannot find the focus, even the shooting signal was received, it will not shoot.

3



- Back** ① Return Button: Click this button to return the previous page.
- Setting 1** ② Timer Shooting: Click to set the detailed timer shooting, it can set 1-10 different shooting plans. The first setting is completed before entering the second set.
- Activate** ③ Activate Button: This button is to confirm the function setting. Click to confirm the setting or cancel the setting (figure 5). 'Cancel' to exit confirmation settings and 'Confirm' to confirm the setting. If the parameter settings are correct, click this button to go directly to the next timing plan. If settings are incorrect, click this button will display (figure 6). The date and time of the scheduled settings must be after your current time. If it is before, then it cannot be confirmed and will display (figure 6)
- Cancel All** ④ Cancel All Button: Click this button (figure 7) can select 'Confirm' to cancel all the settings or 'Cancel' to exit the cancel setting.



- Date** ① Shooting Date Setting: Click this icon (figure1) to move up and down to select date. 'Done' button to confirm, 'Cancel' is the exit button. This date is the one you start planning for shooting.
*The shooting date setting will be changed according to the language you are using on the device (ie, the language used is consistent with the device)
- Time** ② Shooting Time Setting: Click this icon (figure2) to move up and down to select time. 'Done' button to confirm, 'Cancel' is the exit button. This time is the one you start planning for shooting.
- Long** ③ Exposure Time Setting: Click this icon (figure3) to move up and down to select exposure time. 'Done' button to confirm, 'Cancel' is the exit button.
- Num** ④ Set the Number of Shots: Click this icon (figure4) to move up and down to select the number of shots. 'Done' button to confirm, 'Cancel' is the exit button.
- Int'l** ⑤ Interval Time Setting: Click this icon (figure5) to move up and down to select interval time between shots. 'Done' button to confirm, 'Cancel' is the exit button.

Note: The date and time must not be set before your current time, otherwise the settings cannot be

The information of this instruction manual is updated as of 28th Sep, 2013. For information on the use of the combination of product marketed after this date, please contact PIXEL's dealer for advice.

Now you can experience unparalleled PIXEL product. If you have any questions, you can consult your local dealer. Or, visit our website www.pixelhk.com.

Changes or modifications not expressly approved by the party responsible for compliance could void the user's authority to operate the equipment.

NOTE: THE MANUFACTURER IS NOT RESPONSIBLE FOR ANY RADIO OR TV INTERFERENCE CAUSED BY UNAUTHORIZED MODIFICATIONS TO THIS EQUIPMENT. SUCH MODIFICATIONS COULD VOID THE USER'S AUTHORITY TO OPERATE THE EQUIPMENT.

This device complies with Part 15 of the FCC Rules. Operation is subject to the following two conditions: (1) this device may not cause harmful interference, and (2) this device must accept any interference received, including interference that may cause undesired operation.

This equipment complies with FCC RF radiation exposure limits set forth for an uncontrolled environment. This device and its antenna must not be co-located or operating in conjunction with any other antenna or transmitter. To comply with FCC RF exposure compliance requirements, this grant is applicable to only Mobile Configurations.