

User guide

BT-06HS-T

Bluetooth Headset
User Manual

Model: BT-06HS-T
FCC ID.: SJ9-BT-06HS-T

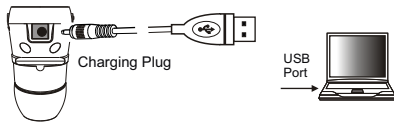
THIS DEVICE COMPLIES WITH PART 15 OF THE FCC RULES. OPERATIONS IS SUBJECT TO THE FOLLOWING TWO CONDITIONS:
(1) THIS DEVICE MAY NOT CAUSE HARMFUL INTERFERENCE
(2) THIS DEVICE MUST ACCEPT ANY INTERFERENCE RECEIVED, INCLUDING INTERFERENCE THAT MAY UNDESIRE OPERATION.

Made in Taiwan Brand Name:PCI

Specification of the Headset

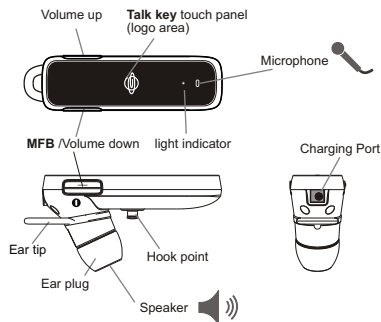
Bluetooth Standard	Bluetooth V2.1
Talktime	Over 7 hrs.
Standby time	Over 7 Days.
Charging time	Within 90 ~120Mins.
Operation range	10 meters(open space)
Supported Bluetooth profiles	Handsfree / Headset .
Operating temperature range	0 ~ 55 °C
Storage temperature	0% ~ 90% (non-concrete status)
Power Supply	5V DC, 00~240V AC adapter

1. Charging the Headset



1. At least for 4 hours when first time charging,
2. When charging, the red light on; fully charged the light will be off.

2. Introduction of the product

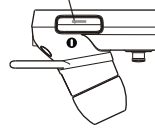


- **Stand-by mode**-----
blue light flash once every 5 Sec.
- **Connected mode**----
blue light flash two times every 5 Sec.
- **Active call mode**----
blue light flash three times every 5 Sec.

- **low battery**----
red light flash.

3. Turn on/ Turn off

3 Sec



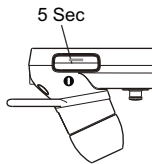
Press the MFB key for about 3 Sec, to turn on and turn off.



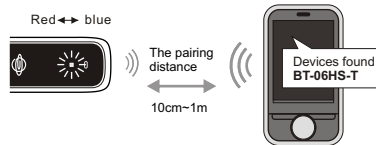
Power on - blue light flashing.
Power off - red light flashing then off.

4. Pairing with your mobile phone

It need to pair with your Bluetooth device, first time.

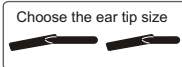
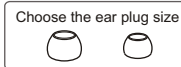


1. Before pairing, make sure your headset is off.
2. Press the MFB key for at least 5 sec; the blue and red light flashing alternately it means the headset is in the "pairing mode".
3. Please ensure that your mobile phone is provided the Bluetooth Function, and activate the function.



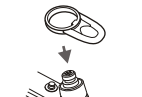
4. "BT-06HS-T" will show on certain items in your mobile phone.
5. Key in pairing pin code "0000" press "yes", the indicator light will turn from the blue/red flashing status into blue flashing, it means the pairing has been successful.
7. Now the headset has been in the "connected mode". you may receive or dial the phone call.

5. How to wear the headset



large one on headset already

Cap the ear tip



The salient insert in the little hole



6. How to wear it firmly

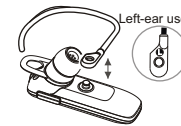
○ Inserted completely



✗ Inserted Incompletely

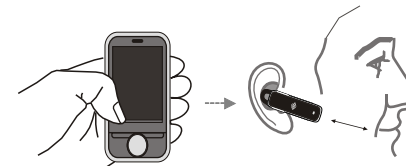


The ear tip must insert to ear bone completely.



If you can't wear it firmly, use the ear hook as assist

7. Make a call.



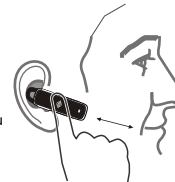
microphone toward jaw

To make a call, dial through your mobile phone.

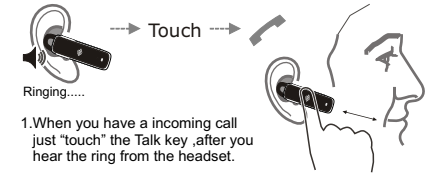
8. Reject a call.



When you hear the in-coming call rings from your headset; touch the Talk key touch panel (logo area) for 2 Sec, when you hear the "Do Do" sound then release it. ---Reject a call.



9. Answer a call.

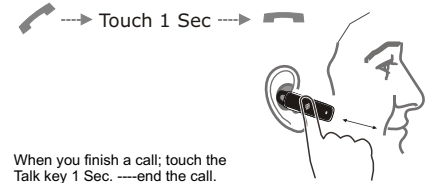


Ringing.....

1. When you have a incoming call just "touch" the Talk key ,after you hear the ring from the headset.

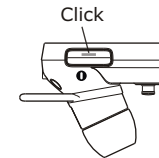
2. You can also click MFB key to receiving a call

10. End a call.



When you finish a call; touch the Talk key 1 Sec. ---end the call.

11. Voice dialing

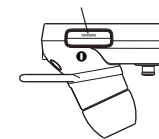


1. The headset should be under "Connected mode". click the MFB key; then you can make the "Voice dialing" by the mobile phone's operation instruction..

2. This function depends on the specification of your mobile phone.

12. Redial last number

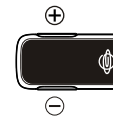
Double-Click



1. The headset should be under "Connected mode". By double-click the MFB key, after you hear a "Do-Do" sound from the headset, then it will redial again.

2. This function depends on the specification of your mobile phone.

13. Volume control.



You can adjust the headset volume during a call.

Mute & un-mute



1. When during call press the "Volume up & Down" key simultaneously; you will hear a "Do-lu-do-do" sound, then your voice won't be heard.

2. Click the Volume up or Volume Down key again, you will hear the "Beep" sound to un-mute the microphone.

Federal Communication Commission Interference Statement

This equipment has been tested and found to comply with the limits for a Class B digital device, pursuant to Part 15 of the FCC Rules. These limits are designed to provide reasonable protection against harmful interference in a residential installation.

This equipment generates, uses and can radiate radio frequency energy and, if not installed and used in accordance with the instructions, may cause harmful interference to radio communications. However, there is no guarantee that interference will not occur in a particular installation. If this equipment does cause harmful interference to radio or television reception, which can be determined by turning the equipment off and on, the user is encouraged to try to correct the interference by one of the following measures:

- . Reorient or relocate the receiving antenna.
- . Increase the separation between the equipment and receiver.
- . Connect the equipment into an outlet on a circuit different from that to which the receiver is connected.
- . Consult the dealer or an experienced radio/TV technician for help.

FCC Caution: To assure continued compliance, any changes or modifications not expressly approved by the party responsible for compliance could void the user's authority to operate this equipment. (Example - use only shielded interface cables when connecting to computer or peripheral devices).

FCC Radiation Exposure Statement

This equipment complies with FCC RF radiation exposure limits set forth for an uncontrolled environment.