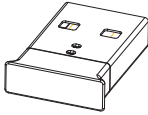
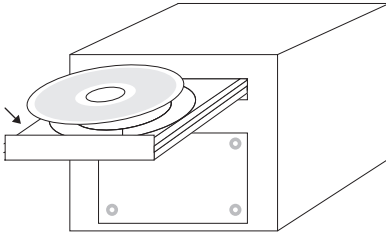


BLUETOOTH V2.0 + EDR USB Adaptor

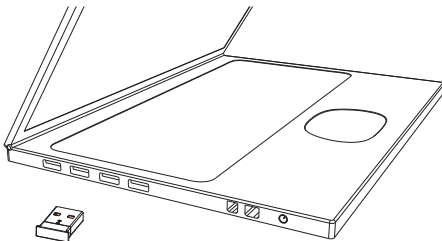


Quick Guide

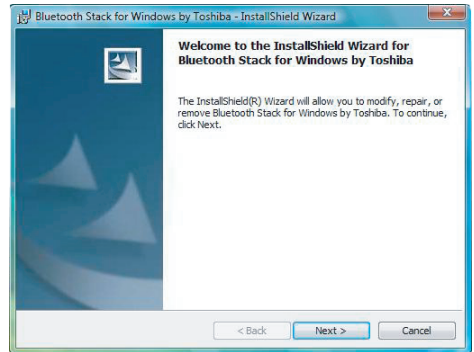
- 1
- Insert software CD into a CD Rom Drive.
 - Insérez le CD de logiciels dans un lecteur de CD-ROM.
 - Die CD mit der Software in ein CD-ROM-Laufwerk einlegen.
 - Inserte el CD del software a una unidad CD Rom.
 - Inserire il CD del software nel lettore CD Rom.
 - Steek de software CD in de CD Rom Drive.
 - Introduza o CD de software no CD Rom Drive.



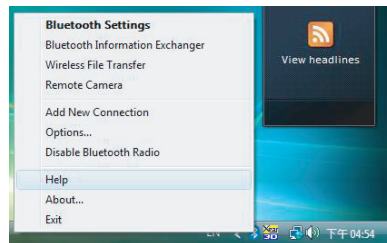
- 2
- Insert the USB dongle into a free USB port.
 - Insérez le dongle USB dans un port USB libre.
 - Den USB-Dongle in einen freien USB-Port einsetzen.
 - Inserte el adaptador USB a un puerto USB libre.
 - Inserire la dongle USB nella porta libera USB.
 - Steek de USB dongle in de vrije USB poort.
 - Insira o dongle de USB num porto de USB livre.



- 3
- Follow the on-screen instruction for software installation.
 - Suivez les instructions à l'écran pour l'installation du logiciel.
 - Zum Installieren der Software die Anleitung auf dem Schirm befolgen.
 - Siga las instrucciones en pantalla para la instalación del software.
 - Per installare il software, seguire le istruzioni a video.
 - Volg de instructies op het scherm op voor de installatie van de software.
 - Siga a instrução da tela para fazer instalação do software.



- 4
- For further information, read the manual file at " on line help ".
 - veuillez s.v.p lire le manuel " aide on ligne " pour plus d information.
 - Weitergehende Informationen finden Sie in der Bedienungsanleitung unter "On-Line Hilfe".
 - para mas informacion, por favor lea el manual " ayuda en linea ".
 - per maggiori informazioni leggi il manuale alla voce " aiuto on line ".
 - Voor verdere informatie, lees het handdossier bij " online help".
 - Para mais informacoes, leia a lima manual no " na linha ajuda".



CE Statements

This device has been tested and found to comply with the requirements set up in the council directive on the approximation of the law of member states relating to EMC Directive 89/336/EEC, Low Voltage Directive 73/23/EEC and R&TTE Directive 99/5/EC.

FCC Safety Statements

This device complies with Part 15 of the FCC rules. Operation is subject to the following two conditions:

- (1) This device may not cause harmful interference.
- (2) This device must accept any interference received, including interference that may cause undesired operation.

The radiated output power is far below the FCC Radio frequency exposure limits. Nevertheless, this device should be used in such a manner that the potential for human contact during normal operation is minimized.

Warning:

Changes or modifications made to this equipment not expressly approved by the manufacturer. May void the FCC authorization to operate this equipment.

Important! Please note the following:

This equipment has been tested and found to comply with the limits for a Class B digital device, pursuant to part 15 of the FCC Rules. These limits are designed to provide reasonable protection against harmful interference in a residential installation. This equipment generates, uses and can radiate radio frequency energy and, if not installed and used in accordance with the instructions, may cause harmful interference to radio communications. However, there is no guarantee that interference will not occur in a particular installation. If this equipment does cause harmful interference to radio or television reception, which can be determined by turning the equipment off and on, the user is encouraged to try to correct the interference by one or more of the following measures:

- Reorient or relocate the receiving antenna.
- Increase the separation between the equipment and receiver.
- Connect the equipment into an outlet on a circuit different from that to which the receiver is connected.
- Consult the dealer or an experienced radio/TV technician for help.

Copyright and Trademark Notices

Products and brand names may be the trademarks or registered trademarks of their respective owners.