



# Network Camera Web Application Manual

Ver. S1  
2010/12/23

ISM Development G  
S/W part

## Change History

Version	Issue Date	Comments	Approval	Check	Author
S1	2010-12-23	test export	N/A	N/A	Jung-yup Kim

# Contents

<b>1. System Requirements .....</b>	<b>5</b>
1-1. <b>HARDWARE .....</b>	<b>5</b>
1-2. <b>SOFTWARE .....</b>	<b>5</b>
1-2-1. Operating System .....	5
1-2-2. Web Browser .....	5
<b>2. Initial Connection to a Camera .....</b>	<b>5</b>
2-1. (S1 사양에 따른 예정).....	오류! 책갈피가 정의되어 있지 않습니다.
2-2. CREATING AN ADMINISTRATOR ACCOUNT .....	5
2-3. INSTALLING ACTIVEX VIEWER CONTROL.....	6
2-4. DELETING ACTIVEX VIEWER CONTROL .....	9
<b>3. Viewer Screen .....</b>	<b>10</b>
<b>4. Function Setup page .....</b>	<b>11</b>
4-1. <b>CONDITION INFORMATION .....</b>	<b>13</b>
4-1-1. Network.....	13
4-1-2. Session Information .....	13
4-2. <b>NETWORK.....</b>	<b>13</b>
4-2-1. IPv4.....	13
4-2-2. IPv6.....	14
4-2-3. Wireless Connection .....	17
4-3. <b>DATE AND TIME .....</b>	<b>19</b>
4-3-1. Overview.....	19
4-3-2. Synchronizing Time with NTP Server .....	19
4-3-3. Setting Time Manually .....	19
4-4. <b>USER ACCOUNT .....</b>	<b>20</b>
4-4-1. Overview.....	20
4-4-2. Making an Account .....	17
4-4-3. Deleting an Account.....	17
4-5. <b>IMAGE SENDING/SCHEDULING .....</b>	<b>18</b>
4-5-1. Overview .....	22
4-5-2. Setting Network Folder for Sending.....	18
4-5-3. Setting for E-mail .....	19
4-5-4. Schedule setting .....	20
4-6. <b>DYNAMIC DNS SERVICE SETTING (DDNS) .....</b>	<b>21</b>
4-6-1. Overview .....	25
4-6-2. Activating DDNS Service .....	21
4-7. <b>CAMERA MAINTENANCE .....</b>	<b>22</b>
4-7-1. Overview .....	27
4-7-2. Version Informationi .....	27
4-7-3. Access Log .....	27
4-7-4. Update .....	28
4-7-5. FPS Setup .....	24
<b>5. Example: Changing Wirred Connection to Wireless Connection.....</b>	<b>25</b>
<b>6. Example: Setting External Internet Connection (When using a router).....</b>	<b>27</b>
<b>7. Example: Using Commercial DDNS Service .....</b>	<b>29</b>

# 1. System Requirements

## 1-1 Hardware

CPU: Intel Pentium® 4 3.19Ghz or above  
Memory: more than 1.0Gb (2Gb or above recommended)

## 1-2 Software

### 1-2.1. Operating System

Windows NT/XP/VISTA/7  
Windows XP service pack 2 or above recommended

### 1-2.2. Web Browser

Internet Explorer 5 or above

## 2. Initial Connection to a Camera

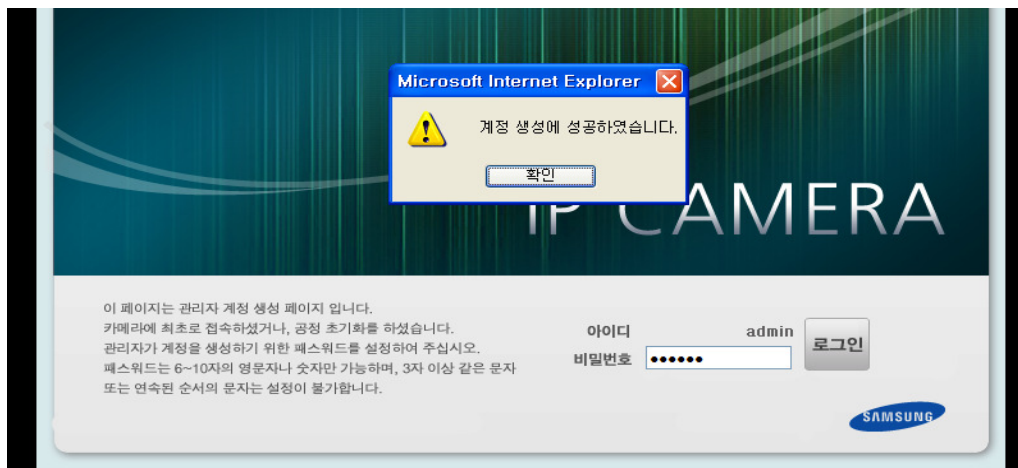
### 2-1 Creating an Administrator Account

When you connect a camera after conducting the initial connection or restoring the factory default settings, you can access the Administer Account Creation Page. The factory default IP is **192.168.0.70** and HTTP port is **8001**.

The initial connection URL is <http://192.168.0.70:8001>.

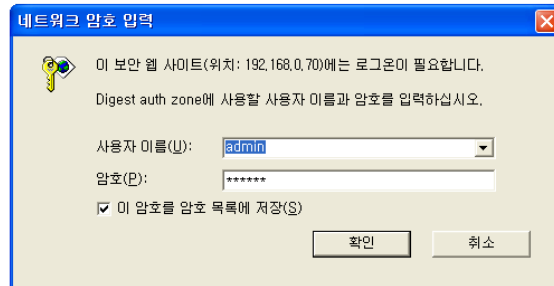


Create your password according to the password creation rule and click the Login button to create an account. When you create the account successfully, you will be automatically accessed to the main page of the camera.

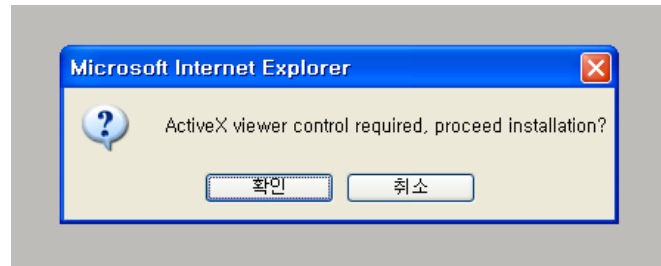


## 2-2 Installing ActiveX viewer Control

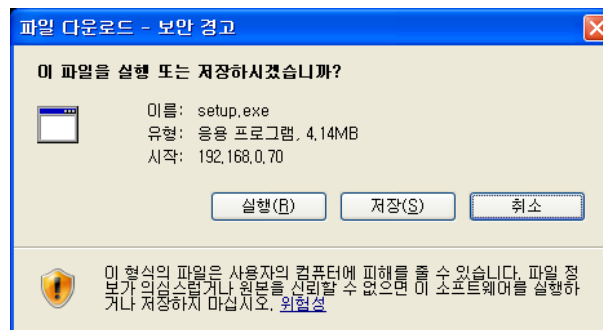
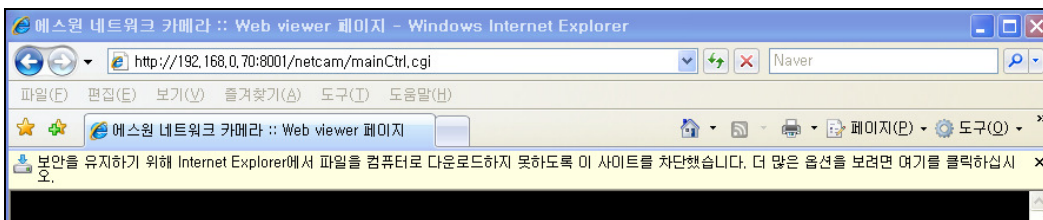
Access the main page of the camera.



Log in with your ID and password.

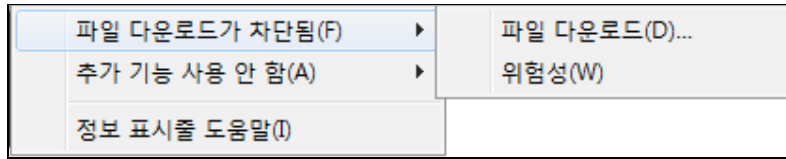
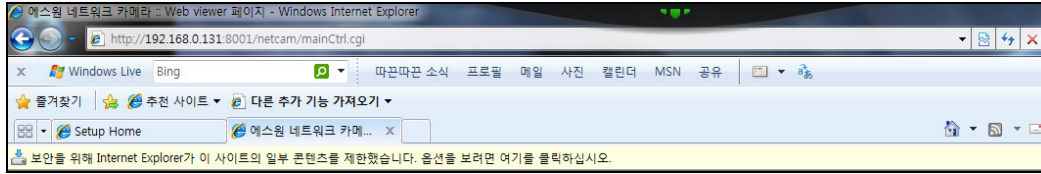


Click OK if the dialogue box asking whether you want to install ActiveX viewer control is displayed.

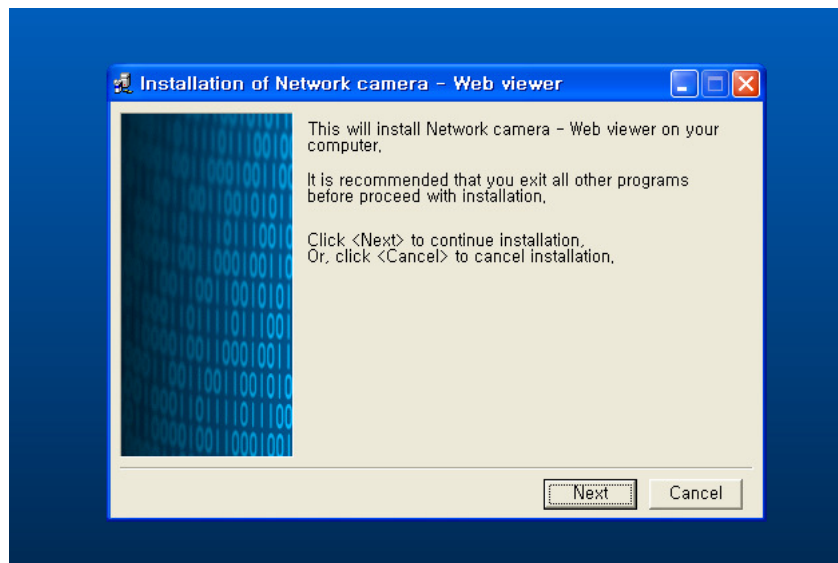


If the information bar above appears due to security setting, download will be initiated by clicking the information bar and selecting **[File Download]**. When the download window appears, click the Run button.

Windows 7/Internet explorer 8 (a case prior to downloading/installing setup.exe)



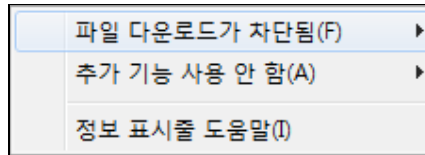
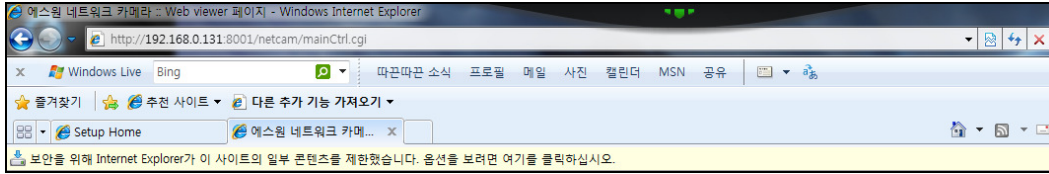
If the information bar above appears prior to downloading or installing setup.exe, click **[File Download Blocked>File Download]**.



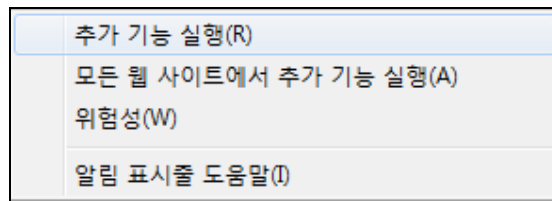
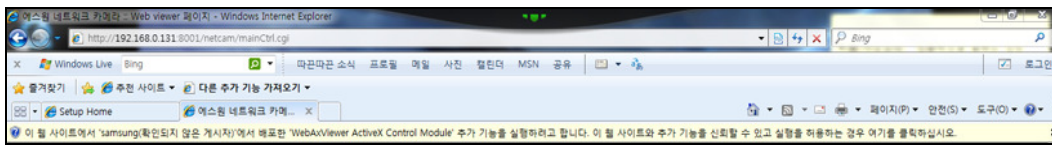
When the installation is complete, click "Finish".

In order to apply the installed ActiveX configuration, renew the web page by clicking F5 key or **[Reload]**. If the information bar asking whether you want to execute Web viewer is displayed, click OK.

In case of Windows7/Internet explorer 8 (after installing setup.exe)



After installation, if the information bar is shown, click it and select **[Not using additional functions>Running additional functions]**.

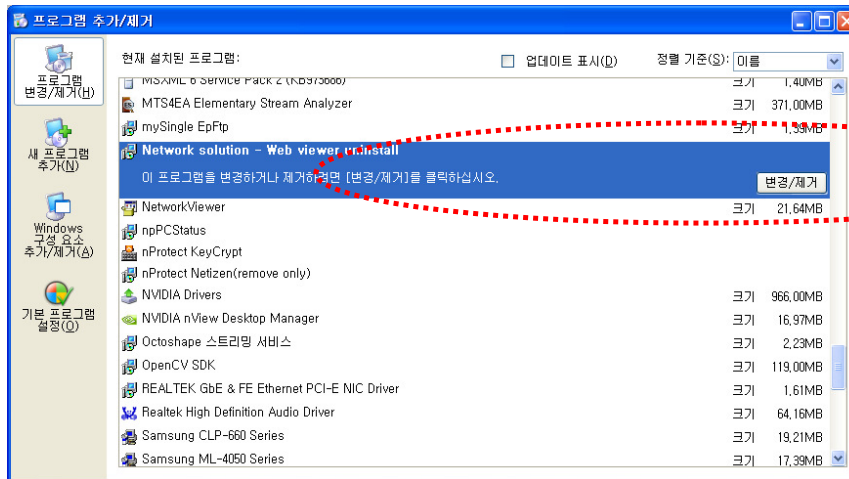


After installation, if the information bar is shown, click it and select **[Running additional functions]**.

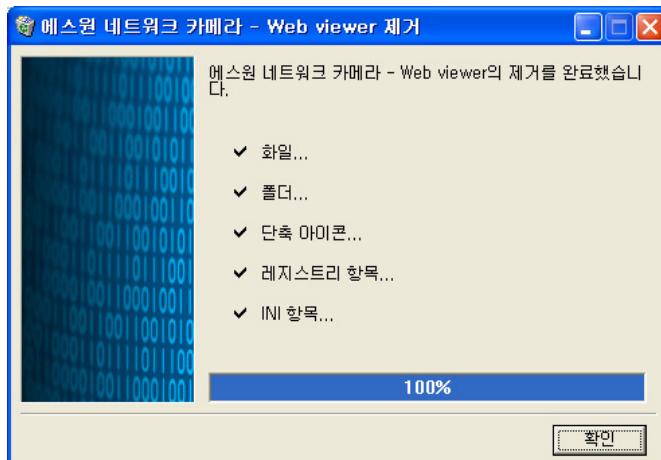


## 2-3 Deleting ActiveX viewer Control

Run [Start>Control Panel>Add/Remove Programs].

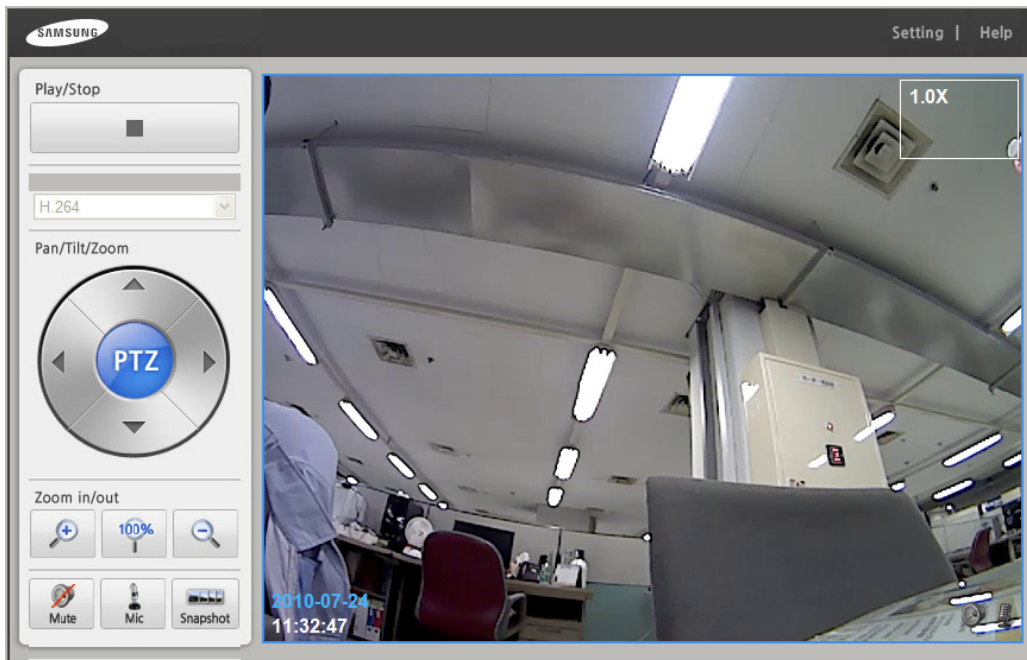


Remove it by clicking the button, S1 Network Solution – Remove Web Viewer.



If it is removed, click Confirm.

## 3. Viewer Screen



It is the main Viewer page. You can check and manipulate the images of the camera.

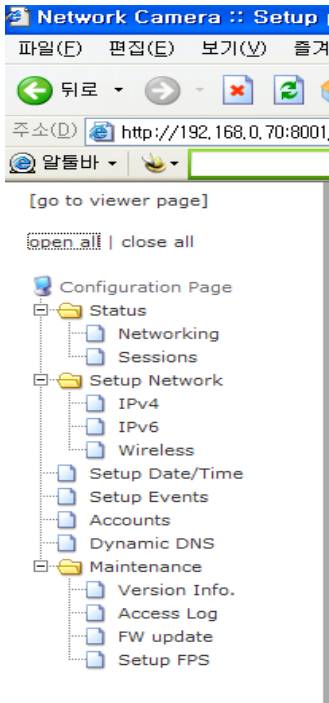
### Explanation of Menu



- Start/Stop  
Play or stop the video.
- Stream Type  
You can change the stream types of the video.  
MJPEG: It shows the images in relatively more detail but the size of the video is big.  
H.264: It shows the images in relatively less detail but the size is small.
- Pan / Tilt / Zoom  
**Pan / Tilt:** Move the screen to the up/down/left/right while the zoom function is running.  
**Zoom:** Zoom in or out by using enlargement or reduction button. Initialize the screen by using 100% button.
- Mute/ Mike / Snapshot  
**Mute:** It turns ON/OFF mute mode. It is on mute mode by default. If you press this button, you can hear the sound of the place where the camera is installed.  
**Mike:** While the button is pressed, the sound is sent to the camera and the camera automatically turns into mute mode. (a mike is needed) If you don't press this button, the sound is not sent and the camera turns into the previous mode.  
**Snapshot:** It saves stopped images as files. It is saved as JPG files, and the route is \Samsung-SNAPSHOTS in 'My Documents'.
- Help  
If you click it, the pages of help are opened.

## 4. Function Setup page

When you select a function to set up in the tree menu on the left frame, the corresponding menu will appear on the right frame. You can check or set the network status of the current camera.



- Go to Viewer Page  
After the setup is complete, go to the web viewer page.
- Open All / Close All  
It is to display all sub-menus of the setup tree menu or the upper menu in the setup tree menu..
- Setup Tree Menu  
Folder Icon: When clicking it, you can see a sub-menu of the corresponding category.  
Document Icon: When clicking it, you can go to the corresponding setup page.

## 4-1 Condition Information

### 4-1-1. Network

**:: Network status ::**

Wired network information:	
MAC address	00:50:C2:74:0A:2F
IP address	192.168.0.70
Subnet mask	255.255.255.0
Default gateway	192.168.0.1

Wireless network information:	
MAC address	
IP address	192.168.0.71
Subnet mask	255.255.255.0
Default gateway	192.168.0.1

Common network information:	
Host name	00-50-C2-74-0A-2F
HTTP Port No.	8001
Data Port No.	4001
Primary DNS address	192.168.0.1
Secondary DNS address	

This page shows condition information of present network. You can check condition of setting wire/wireless network equipment of camera.

### 4-1-2. Session Information

**:: Network session status ::**

Network connection status:		
Current connected IP address	Latest connected ID	Connected time instant
192.168.0.1	admin	24/Jul/2010:11:35:43

This page shows session information of present network. It shows IP of external client connected to camera, ID, connection time.

## 4-2 Network

### 4-2-1 IPv4

**:: Network(IPv4) setting ::**

[help](#)

Wired setting:	
Wired connection(connected)	Current setting
<a href="#">Static setting</a>	Selected
<a href="#">DHCP setting</a>	

Wireless setting:	
Wireless connection(unconnected)	Current setting
<a href="#">Static setting</a>	Selected
<a href="#">DHCP setting</a>	

This is a page for setting up a general network based on IPv4. You can individually set up general wired and wireless networks.

#### 4-2-1-1 Setting LAN (wired) Network

- **Static IP Environment:** It is when using the IP allocated by local network or an internet service provider. You can set it up by clicking the static IP address setting.

**:: Static IPv4 address setting(Wired Network) ::**

Network setting:	
HTTP Port No.	<input type="text" value="8001"/>
Data Port No.	<input type="text" value="4001"/>
IP address	<input type="text" value="192.168.0.70"/>
Subnet Mask	<input type="text" value="255.255.255.0"/>

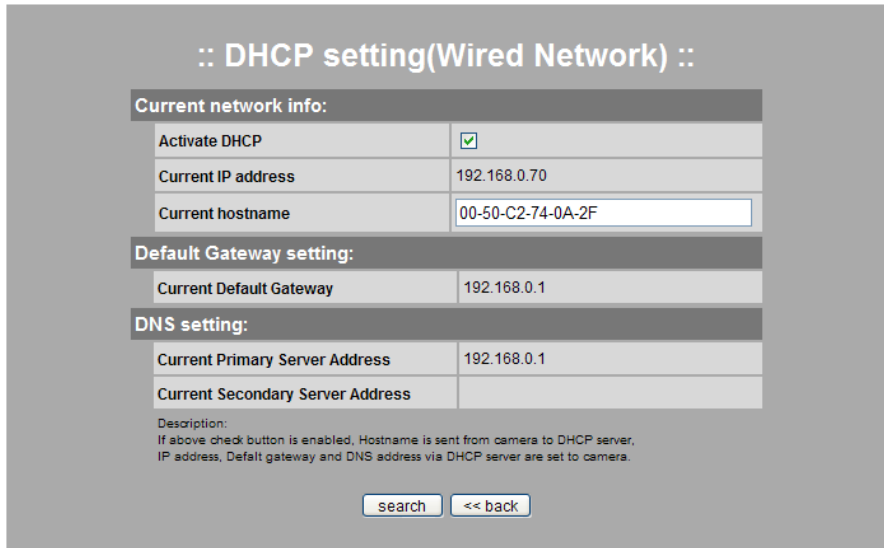
Default Gateway setting:	
Default Gateway	<input type="text" value="192.168.0.1"/>

DNS setting:	
Primary Server Address	<input type="text" value="192.168.0.1"/>
Secondary Server Address	<input type="text"/>

#### Setting Instruction

Enter and save the network information allocated by an internet service provider. (In case of local network, enter the router information. Please contact network administrator.) If you change the setting, the existing connection is invalid and automatically reconnected. \*HTTP port number is the port which is used for web browser to communicate with the pages of the camera and the default is 8001. \* Data port number is the port which stream video/sound data between the viewer and the camera. The default is 4001. Please be careful not to select duplicated port and IP.

**Dynamic IP Environment:** If the IP allocated by local network or an internet service provider is dynamic IP or the IP is automatically allocated by the router, you can set it up by clicking the DHCP setting.



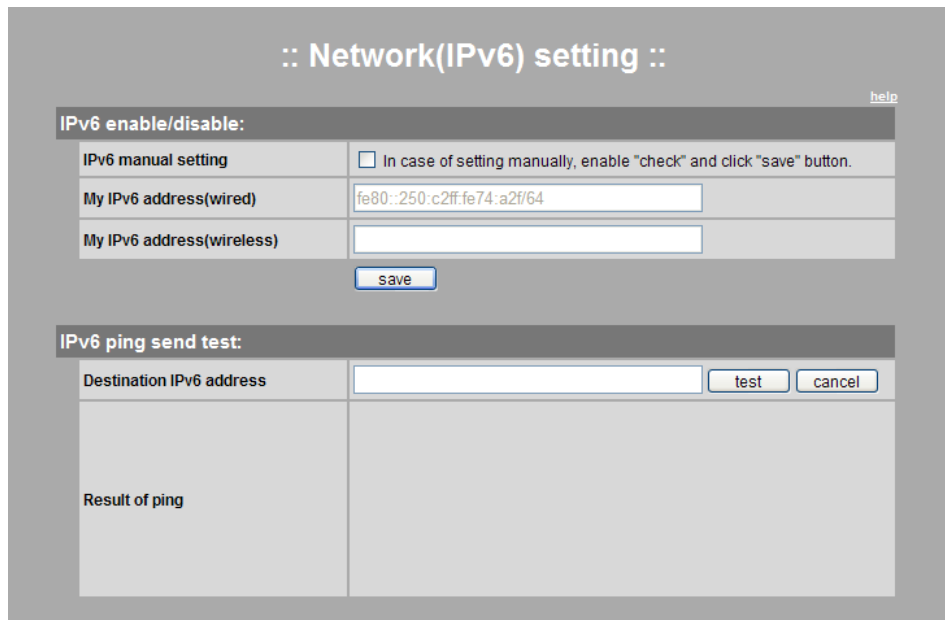
Setting Instruction

Check the box next to Activate DHC to activate dynamic IP and click Search to search for IP. If the search is successful, IP address, default gateway and DNS server address will be automatically assigned. Press the Save button to save the settings. In this case, the existing connection will become invalid and it will be automatically reconnected with the new settings. (The service may be limited based on the hardware address in some dynamic IP service areas.)

4-2-1-2 Wireless LAN(Wireless) Network Setting

It can be set up in the same way as the wired network.

4-2-2 IPv6



This is a page for testing the IPv6-based network. This page can confirm IPv6address which is set in the current camera network, and it can also test the IPv6 Ping.

<Reference>

IPv6 is limited to operation system of present camera. You can't see image through IPv6.

## 4-2-3 Wireless Connection

:: Connecting via wireless :: [help](#)

Wireless connection status					
AP name(SSID)	mode	security	frequency	signal strength	etc.
linksys-n	Managed	NONE	2.417 GHz	5/5	

Available access points					
AP name(SSID)	mode	security	channel	signal strength	select
linksys-n	Managed	off	4	5/5	<input type="radio"/>
f2 ?1X?Z%] - X??T□□?A =.	Ad-Hoc	off	1	4/5	<input type="radio"/>

Secured connection	
Security mode	<input checked="" type="radio"/> none <input type="radio"/> WEP/64bit <input type="radio"/> WEP/128bit <input type="radio"/> WPA2/PSK

This is a page for setting up wireless connection. If the current camera is wirelessly connected, you can check information on the access point (AP) that you connect.

### Setting Instruction

Select the AP that you want among the searched APs. In case of an encrypted AP, set the same security mode, which is applied to the AP, to a camera, enter the AP key in the key box which is created when selecting the security mode, and then click Confirm to reflect the wireless connection setting. (It does not mean the immediate connection.)

When you set the camera switch to the wireless mode and click Reset or Restart, the wireless connection will be operated by applying the current wireless connection setting. The connection may not be stable according AP setting. If the connection is not stable, carefully read the user's guide of a wired/wireless router or AP, or ask for help from the device manager.

### Note

AP Name: It is the name of AP of a wireless router (SSID)

Mode: It has Ad-hoc and Managed modes.

Security: It shows whether security is on or off.

Bandwidth: It shows wireless LAN bandwidth.

Channel: It shows the number of channels which AP supports.

Signal Strength: It shows the strength of wireless signal of AP. If the signal reception of AP is poor, the image reception may be unstable due to the characteristics of the wireless access.

### Security AP Connection

Security Mode: It supports WEP 64/128bit and WPA2 (pre-shared key).

Authentication Type: It has Shared Key and Open methods.

Key: It is an encrypted key which is set to AP to connect and it is necessary information for connection.

### Notice

Dynamic IP environment requires caution because wireless network may be unstable compared to wired network. It is recommended to record DHCP setting status or know IP update period. When IP is renewed because a camera is reset or unstable network results in disconnection, it is not possible to know a new IP address. In this case, you should contact an internet service provider or a network administrator or you can get IP address information, which is assigned to the camera, on the DHP server administration page of a personal router.

## 4-3 Date and Time

### 4-3-1 Overview

**:: Date and Time ::** [help](#)

**Server time status:**

Current server time	2010-07-24 11:43:51
---------------------	---------------------

**Adjust server time:**

Using NTP server  Synchronize with NTP server  Manual setting

NTP Server Address or Name:

Time Zone:   
GMT+06:00 Asia/Novosibirsk, Omsk  
GMT+06:30 Asia/Rangoon  
GMT+07:00 Asia/Bangkok, Hanoi, Jakarta  
GMT+08:00 Asia/Hong Kong, Beijing, Shanghai, Perth  
**GMT+09:00 Asia/Tokyo, Seoul, Yakutsuk**  
GMT+09:30 Australia/Darwin, Adelaide  
GMT+10:00 Pacific/Saipan, Hobart  
GMT+11:00 Australia/Sydney, Solomon  
GMT+11:30 Pacific/Norfolk  
GMT+12:00 Pacific/Fiji, Marshall, Kamchatka

Date: 07 Month 24 Day 2010 Year

Time: 11 Hour 43 Minute 51 Second

Description:  
Please check "Synchronize with NTP server" when you use NTP server to synchronize the internal clock.  
Please set the NTP server address or name, after confirming it with your ISP or network administrator.

This is a page for setting the date and time of the camera.

### 4-3-2 Synchronizing Time with NTP Server

#### Setting Instruction

Select "Synchronize with NTP server," and enter the NTP server address.  
Select the time zone for your area. And click the Save button to apply the changes.  
Check if the time on the server is correct.

### 4-3-3 Setting Time Manually

#### Setting Instruction

Select "Manual Setting" and set the date and time directly on the bottom of the menu.  
Click the Save button to apply the changes, and check if the time on the server is correct.



## 4-4 User Account

### 4-4-1 Overview

This is a page for managing the user account.

### 4-4-2 Making an Account

#### Setting Instruction

Enter your ID and password, designate the user group, and then click the Save button.

#### Note

ID: It must be 6 to 10 characters including English alphabets or numerical digits only.

Password: It must be 6 to 10 characters including English alphabets or numerical digits only. The password cannot contain three or more consecutive digits or English alphabets in ascending or descending order and it also cannot contain three or more same characters.

EX) hong321, zyx8010, kimzzz, luck777

#### User Group

Administrator: It is the user that has the authority to access and set up all of the pages.

General User: It is the user that has the authority to access the viewer page.

### 4-4-3 Deleting an Account

#### Setting Instruction

Select an account to delete by clicking the account displayed in the user list in the Account Deletion menu. When you click the Delete button, it will be deleted and disappeared from the list.

## 4-5 Image sending / Scheduling

### 4-5-1. Overview

**:: Event setting ::**

[help](#)

Image storage setting:		
Storage media	Trigger setting	Current status
<a href="#">PC folder configuration</a>	<a href="#">Schedule setting</a>	stopped

Image transfer:		
Transfer method	Trigger setting	Current status
<a href="#">e-mail configuration</a>	<a href="#">Schedule setting</a>	stopped

This page is for setting event and scheduling function. It is possible to set schedule separately according to image sending media. Image is sent by JPC file of VGA (640x480) size.

### 4-5-2. Setting Network Folder for Sending

**:: Configuration setting for PC shared folder ::**

Mount setting:	
Mount type	<input checked="" type="radio"/> SMB <input type="radio"/> NFS <input type="radio"/> SDCard
Username for NAS	<input type="text" value="username"/>
Password for NAS	<input type="text"/> <input type="text"/>
IP address for NAS	<input type="text"/>
Folder name of NAS	<input type="text" value="share"/>
Mount folder info	There is no mounted folder.
Mount folder contents	<input type="button" value="Show"/> show mounted folder.

This page is for setting of saving image through network sharing folder.

#### Setting Method

Mount/Unmount network shared folder saving image to this menu.

#### Mount setting

Mount file system: SMB(window), NFS(Linux)

Network shared folder user name: Input the user name of network sharing folder.

Network shared folder password: Input password of network shared folder twice, and the password should be same.

Network shared folder IP address: Input IP address of network sharing folder.

Network shared folder name: Input folder name of network shared folder.

Mount folder information: If there is present mounted network folder, it is displayed.

### 4-5-3. Setting for E-mail

**:: Setting for e-mail ::** [help](#)

**Detail settings for e-mail:**

To: (specify e-mail address 1)

To: (specify e-mail address 2)

To: (specify e-mail address 3)

From:

Subject:

Send Text message

Send Image file According to schedule setting.

**SMTP server setting:**

SMTP server IP Address or Host Name

Port No. (default=25)

Use of authentication  Yes

SMTP authentication

Login ID

Password

**Send e-mail test:**

To: (specify test e-mail address)

This is a setup page in case that email is used for a scheduled transfer media.

#### Setting Instruction

Enter all sections accurately and click the Save button.

#### Detail Setting for E-mail

To (receiver): Enter the e-mail address of a receiver. You can register up to 3 different addresses.

Sender: Enter the e-mail address to receive a reply from the receiver.

Title: Enter the title of the e-mail.

Sending contents/JPEG files: There are two different sending modes which are sending text messages and sending JPEG files.

#### SMTP Server Setting

SMTP Server IP Address/Host Name: Enter the server name or IP address informed by SMTP server.

Port Number: Enter the port number of SMTP. (default 25)

Use of Authentication: If you need authentication of SMTP server, click the 'Yes' button.

Login ID/Password: If you need authentication of SMTP server, enter the account information.

#### Send E-mail Test

It is a trial sending by e-mail to check if the setting above is correct. Enter the e-mail address of the receiver and click the "send" button.

## 4-5-4. Schedule setting

:: Timer setting for e-mail ::

[help](#)

Schedule setting:																																																	
Batch setting	<input type="checkbox"/> All day																																																
AM/PM	<input type="checkbox"/> AM <span style="margin-left: 100px;"><input type="checkbox"/> PM</span>																																																
Time	<table style="width: 100%; text-align: center;"> <tr> <td>0</td><td>1</td><td>2</td><td>3</td><td>4</td><td>5</td><td>6</td><td>7</td><td>8</td><td>9</td><td>10</td><td>11</td> <td>0</td><td>1</td><td>2</td><td>3</td><td>4</td><td>5</td><td>6</td><td>7</td><td>8</td><td>9</td><td>10</td><td>11</td> </tr> <tr> <td><input type="checkbox"/></td><td><input type="checkbox"/></td><td><input type="checkbox"/></td><td><input type="checkbox"/></td><td><input type="checkbox"/></td><td><input type="checkbox"/></td><td><input type="checkbox"/></td><td><input type="checkbox"/></td><td><input type="checkbox"/></td><td><input type="checkbox"/></td><td><input type="checkbox"/></td><td><input type="checkbox"/></td> <td><input type="checkbox"/></td><td><input type="checkbox"/></td><td><input type="checkbox"/></td><td><input type="checkbox"/></td><td><input type="checkbox"/></td><td><input type="checkbox"/></td><td><input type="checkbox"/></td><td><input type="checkbox"/></td><td><input type="checkbox"/></td><td><input type="checkbox"/></td><td><input type="checkbox"/></td><td><input type="checkbox"/></td> </tr> </table>	0	1	2	3	4	5	6	7	8	9	10	11	0	1	2	3	4	5	6	7	8	9	10	11	<input type="checkbox"/>	<input type="checkbox"/>	<input type="checkbox"/>	<input type="checkbox"/>	<input type="checkbox"/>	<input type="checkbox"/>	<input type="checkbox"/>	<input type="checkbox"/>	<input type="checkbox"/>	<input type="checkbox"/>	<input type="checkbox"/>	<input type="checkbox"/>	<input type="checkbox"/>	<input type="checkbox"/>	<input type="checkbox"/>	<input type="checkbox"/>	<input type="checkbox"/>	<input type="checkbox"/>	<input type="checkbox"/>	<input type="checkbox"/>	<input type="checkbox"/>	<input type="checkbox"/>	<input type="checkbox"/>	<input type="checkbox"/>
0	1	2	3	4	5	6	7	8	9	10	11	0	1	2	3	4	5	6	7	8	9	10	11																										
<input type="checkbox"/>	<input type="checkbox"/>	<input type="checkbox"/>	<input type="checkbox"/>	<input type="checkbox"/>	<input type="checkbox"/>	<input type="checkbox"/>	<input type="checkbox"/>	<input type="checkbox"/>	<input type="checkbox"/>	<input type="checkbox"/>	<input type="checkbox"/>	<input type="checkbox"/>	<input type="checkbox"/>	<input type="checkbox"/>	<input type="checkbox"/>	<input type="checkbox"/>	<input type="checkbox"/>	<input type="checkbox"/>	<input type="checkbox"/>	<input type="checkbox"/>	<input type="checkbox"/>	<input type="checkbox"/>	<input type="checkbox"/>																										
Action	<table style="width: 100%;"> <tr> <td style="width: 25%;">Start/Stop (Monday)</td> <td style="width: 25%;">Setting file</td> <td style="width: 25%;">Timer interval</td> <td style="width: 25%;">Format</td> <td style="width: 20%;">Size</td> </tr> <tr> <td><input checked="" type="radio"/> Start <input type="radio"/> Stop</td> <td>Monday</td> <td>60m 00s</td> <td>JPEG</td> <td>VGA</td> </tr> </table>	Start/Stop (Monday)	Setting file	Timer interval	Format	Size	<input checked="" type="radio"/> Start <input type="radio"/> Stop	Monday	60m 00s	JPEG	VGA																																						
Start/Stop (Monday)	Setting file	Timer interval	Format	Size																																													
<input checked="" type="radio"/> Start <input type="radio"/> Stop	Monday	60m 00s	JPEG	VGA																																													

This page is for setting Schedule. It is possible to set for sending by E-mail, or saving on network shared folder separately.

## Setting Method

Input ID, password and select user group. After that, click the saving button.

## Reference

Setting at the same time: Select/Cancel from 0 to 24 hrs together.

Morning/Afternoon: Select/Cancel morning/afternoon at the same time.

Time setting: Select/Cancel time in the unit on an hour basis.

## Operation setting

Start/Stop: When saving, select the operation of Schedule schedule.

Setting file: You can save or open the daily schedule. It is possible to set the weekday/weekend/daily schedule.

Timer interval: Set time interval of sending image.

Type: Format of sending image

Size: Size of sending image

## Schedule save/Call function

Save Image: Click a save button for saving schedule of selected day on **[Trigger setting>Schedule Setting]**, and if in **[Action>Start/Stop]**, the button is on the 'Start', the schedule sending is started. If the button is on the 'Stop', schedule is only saved and the schedule on operation is stopped.

Load Image: Call the schedule of the day on Combo box **[Trigger setting>Schedule Setting]**.

## 4-6 Dynamic DNS Service Setting (DDNS)

### 4-6-1. Overview

:: Dynamic DNS ::

[help](#)

DDNS activation	
status	Stopped
enable/disable DDNS	<input type="checkbox"/>

DDNS Account	
username	<input type="text"/>
password	<input type="text"/>

DDNS information	
URL	<input type="text"/>
DNS system	<input type="text"/>
update period	10m <input type="button" value="v"/>

This is a page for setting up general DNS service. You need to subscribe for DDNS service.

### 4-6-2. Activating DDNS Service

#### Setting Instruction

Enter your ID and password in the DDNS Account, type in the registered URL and DNS system information in the DDNS information, and then select the update period (between 10 minutes and 24 hours). If you click Confirm, DDNS will be activated.

Check the enable/disable DDNS box.

Enter your ID and password registered when you joined a DDNS service site in the user name and password.

Enter a user's URL registered in the DDNS site in URL.

For DNS system, refer to the content for DNS system informed by the DDNS service site and enter the corresponding content.

Select the update period by referring to IP update period.

When all settings are complete, click Confirm to reflect the settings and initiate DDNS service.

#### Notice

The camera may not operate if the network setting of a camera or the input information is wrong, or there is any problem in DDNS service. In this case, the service status will be displayed as 'Stopped' because DDNS service of the camera cannot be operated.

#### Note

Supported main DDNS service sites

dyndns.org <http://www.dyndns.org/>

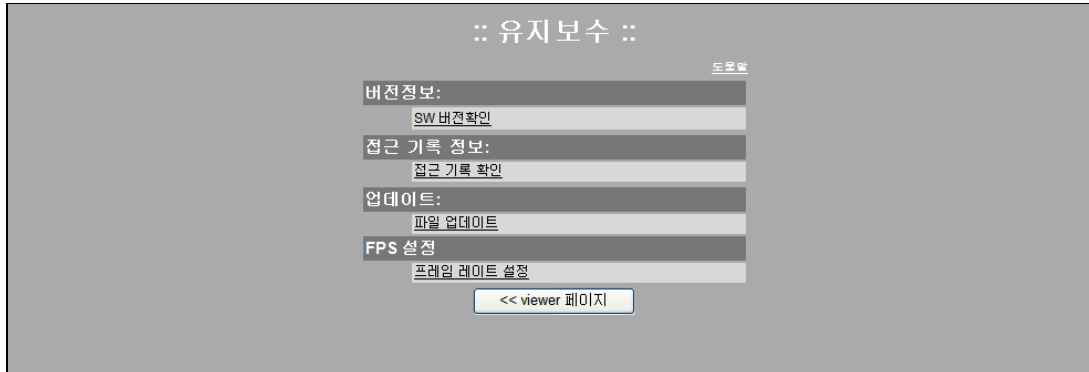
freedns.afraid.org <http://freedns.afraid.org>

zoneedit.com <http://www.zoneedit.com>

no-ip.com <http://www.no-ip.com>

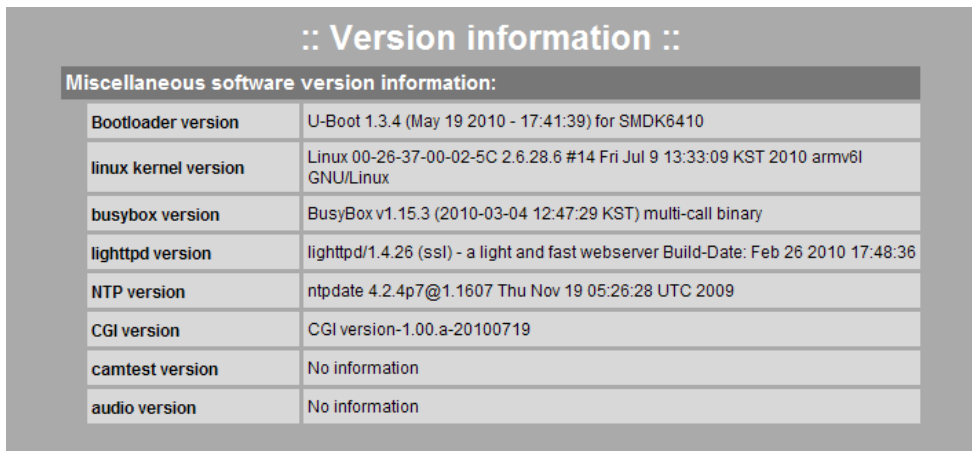
## 4-7 Camera Maintenance

### 4-7-1. Overview



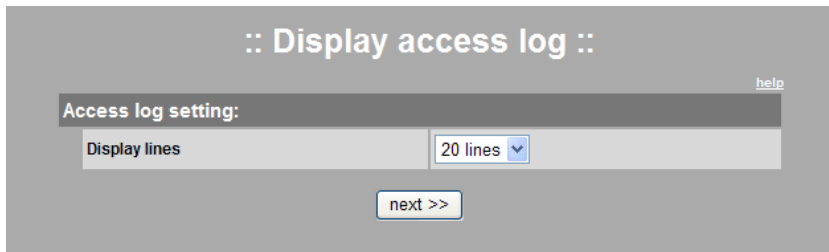
This page is allowed only to members of maintenance. You can access to this page through separate URL and certification process. There are four menus of version information check, access recording information, update, frame rate setting.

### 4-7-2. Version Information

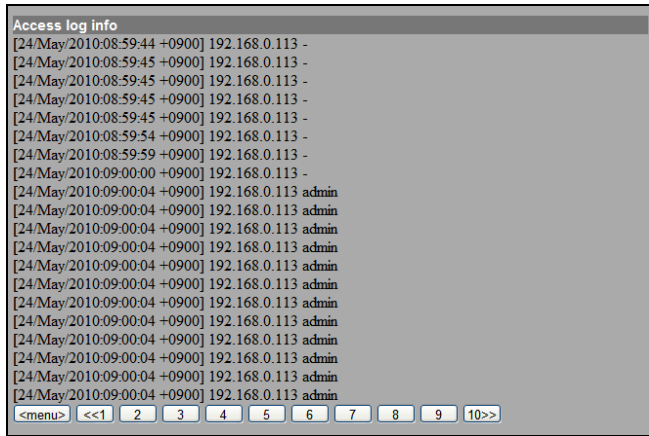


Version of interior software composing factors is displayed.

### 4-7-3. Access Log



Access log of camera system is displayed. It is possible to set the line number indicating per page. When clicking 'Next' button, the log is displayed.

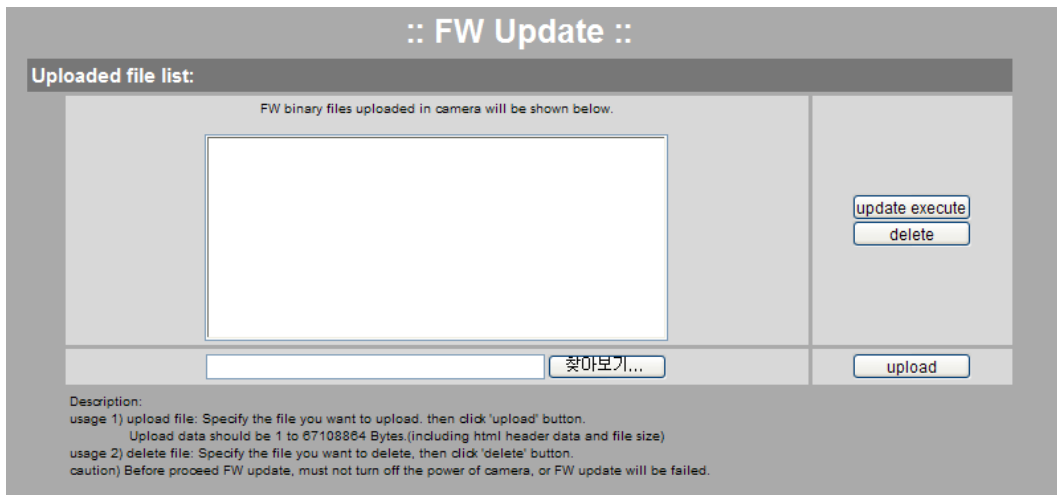


On the log displaying page, you can check the log of the page by clicking the number of page. If there are many logs, they are displayed by 10 pages. For going back to previous page, click the Menu button.

Order of displaying Access log

[DD/MM/YYYY:hh:mm:ss\_Time]\_IP Address\_ Access ID

#### 4-7-4. Update

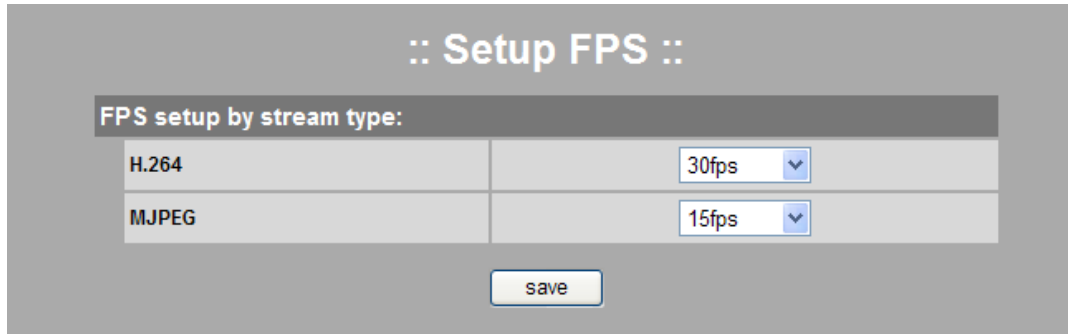


When update is needed, upload the package on camera and update.

\* Operation method

- (1) Click the 'Search' button for calling package file.
- (2) Click the upload button for uploading updated package on camera
- (3) When there is upload success message, and package is displayed on the list, click the update button.
- (4) When update is finished, it is loaded again. Finally reset the camera.

## 4-7-5. Frame Rates Setup



FPS setup by stream type:	
H.264	30fps ▼
MJPEG	15fps ▼

save

It is possible to set the frame rate (fps: frames per second) by stream types.

### Setting Instruction

Click the Save button after selecting fps to set. When the setting is saved, camera stream will be restarted; therefore, please stop all connections before clicking the Save button.

MJPEG stream: It is possible to set the frame rate to 3, 5, 10 and 15fps.

H.264 stream: It is possible to set the frame rate to 10, 15 and 30fps.



## 5. Example: Changing Wired Connection to Wireless Connection

Preparation: Wireless AP

Check whether a camera is connected in wired network before changing to wireless connection.

Wired connection(unconnected)	Current setting
<a href="#">Static setting</a>	Selected
<a href="#">DHCP setting</a>	

Go to [Setup Page>Setup Network>Wireless] .

AP name(SSID)	mode	security	channel	signal strength	select
linksys-n	Managed	off	4	5/5	<input checked="" type="radio"/>
f2 ?1X?Z%] +X??T??T??tA=-	Ad-Hoc	off	1	4/5	<input type="radio"/>

Check whether there is a connectable AP around a camera and select an AP that you want as shown in the figure.

AP Security Activated: Select 'none' in the security mode and click Confirm to save the setting.

AP Security Deactivated: 'on' is displayed in the security mode. For AP security activated, select the security mode and enter the authentication type and key correctly.

Security mode:  none  WEP/64bit  WEP/128bit  WPA2/PSK

Security mode:  none  WEP/64bit  WEP/128bit  WPA2/PSK

Key:

When you complete the settings, click Confirm to save the settings.

Go to [Setup Page>Status>Networking] and check an IP address.

### :: Network status ::

Wired network information:	
MAC address	00:26:37:00:02:5C
IP address	192.168.0.193
Subnet mask	255.255.255.0
Default gateway	192.168.0.1

Wireless network information:	
MAC address	00:26:37:78:F6:57
IP address	192.168.0.194
Subnet mask	255.255.255.0
Default gateway	192.168.0.1

Common network information:	
Host name	00-26-37-00-02-5C
HTTP Port No.	8001
Data Port No.	4001
Primary DNS address	192.168.0.1
Secondary DNS address	

Connect a camera to the address set in wireless network

<http://192.168.0.194:8001/>

When the connection is successful, check the connection status at [Setup Page>Setup Network >Wireless].

[go to viewer page]

open all | close all

- Configuration Page
  - Status
    - Networking
    - Sessions
    - Setup Network
      - IPv4
      - IPv6
      - Wireless
    - Setup Date/Time
    - Setup Events
    - Accounts
    - Dynamic DNS
  - Maintenance
    - Version Info.
    - Access Log
    - FW update
    - Setup FPS
    - Setup Mirror/Flip

### :: Connecting via wireless ::

Wireless connection status						
AP name(SSID)	mode	security	frequency	signal strength	etc.	
linksys-n	Managed	NONE	2.417 GHz	5/5		

Available access points						
AP name(SSID)	mode	security	channel	signal strength	select	
linksys-n	Managed	off	4	5/5	<input type="radio"/>	
f2 ?1X?Z% HX??T??A=-	Ad-Hoc	off	1	4/5	<input type="radio"/>	

Secured connection	
Security mode	<input checked="" type="radio"/> none <input type="radio"/> WEP/64bit <input type="radio"/> WEP/128bit <input type="radio"/> WPA2/PSK

## 6. Example: Setting External Internet Connection (when using a router)

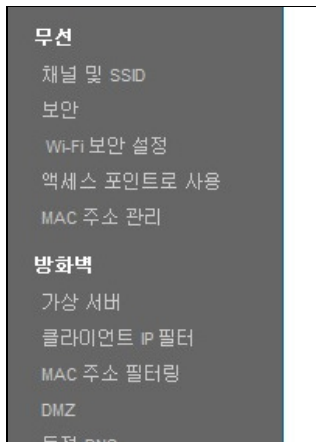
Preparation: an internet router which supports NAT setup (virtual server setup)

The following explains the method which can remotely connect to a camera by using an external internet.

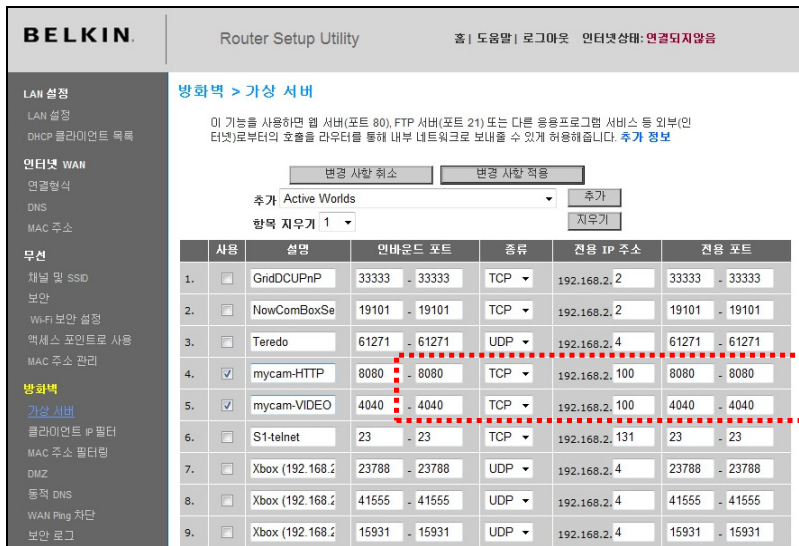
This setup is limited to a personal internet router. If a network is connected to a local network router for public use or you do not have authority for router setup, contact a network administrator.

### Router Setup

Access the Router Setup Page. (Refer to Router Manual.) Go to the NAT setup (or virtual server setup) menu.



Add the IP and port information of a camera. (Please caution double setup not to collide with the existing setup port. Set the port to the numbers between 49152 and 65535, if possible.)



It is necessary to add 2 items in the menu. Refer to the following table.

Item	IP Address	Inbound Port (Internal Port)	Port (External Port)	Outbound (External Port)	Protocol
Web Port	Local IP of a camera For this example, it is 192.168.2.100	49152~65535 (It is impossible to set 80 to inbound port)	49152~65535 (It is impossible to set 80 to outbound port)		TCP

Image Port

49152~65535

49152~65535

Camera Setup

Go to [Setup Page>Setup Network>IPv4>Static Setting] .

[go to viewer page]

open all | close all

- Configuration Page
- Status
  - Networking
  - Sessions
- Setup Network
  - IPv4
  - IPv6
  - Wireless
- Setup Date/Time
- Setup Events
- Accounts
- Dynamic DNS
- Maintenance
  - Version Info.
  - Access Log
  - FW update
  - Setup FPS
  - Setup Mirror/Flip

**:: Static IPv4 address setting(Wired Network) ::**

Network setting:	
HTTP Port No.	8080
Data Port No.	4040
IP address	192.168.2.100
Subnet Mask	255.255.255.0
Default Gateway setting:	
Default Gateway	192.168.2.1
DNS setting:	
Primary Server Address	121.254.25.230
Secondary Server Address	121.254.25.220
<input type="button" value="save"/> <input type="button" value=" &lt;&lt; back"/>	

**상태**

변전 정보		LAN 설정	
펌웨어 버전	F6D4230-4_WW_1.00.03	LAN/WLAN MAC	00:22:75:71:3f:62
부트 버전	1.01	IP 주소	192.168.2.1
하드웨어	F6D4230-4 v1000	서브넷 마스크	255.255.255.0
일련번호	20924423007075	DHCP 서버	사용
인터넷 설정		기능	
WAN MAC 주소	00:22:75:71:3f:63	방화벽 설정	사용하지 않음
연결형식	동적	SSID	VAIO_Network
서브넷 마스크	255.255.255.0	보안	사용
Wan IP	218.209.90.51	WPS	사용
기본 게이트웨이	218.209.90.1	원격 관리	사용하지 않음
DNS 주소	121.254.25.230	UPNP	사용
	218.94.0.73		
	121.254.25.220		

Set the following necessary items by referring to the setup page of a router.

HTTP/Data Port Number: Verify whether HTTP/data port number are the same with those which have been set in the router.

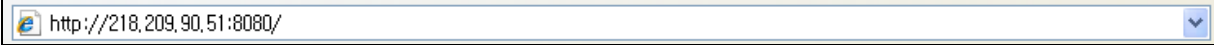
Basic Gateway: Enter the router IP.

DNS Server Address: Enter DNS server address by referring to the Setup page of the router. If there is a single DNS server address, enter the main DNS only. If there are two or more DNS server addresses, it is allowed to enter another DNS address in subsidiary DNS.

When you complete the settings, save it.

Access

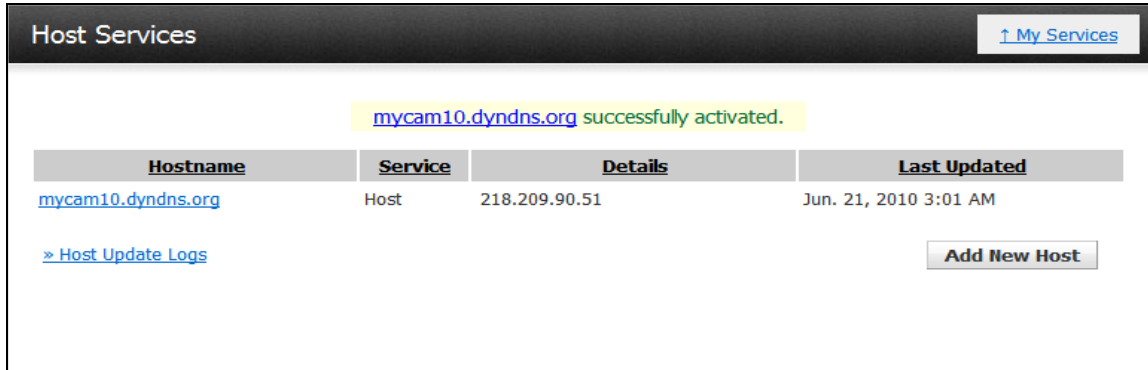
For remote connection to a web browser, URL consists of an IP which is assigned by the internet service provider of a router and HTTP port set in NAT.



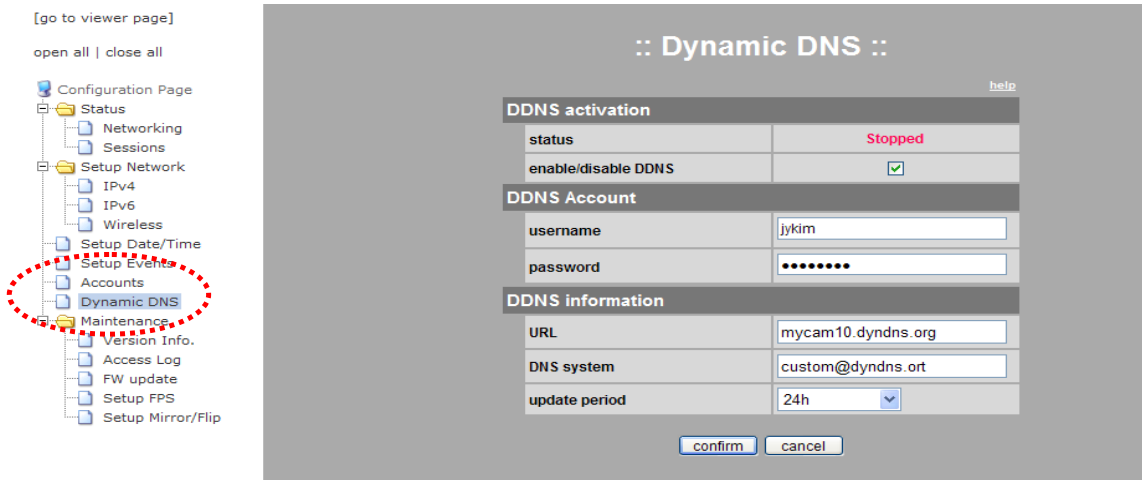
## 7. Example: Using Commercial DDNS Service

Preparation: A DDNS service account, an assigned domain name and a camera which can access an external internet

Access a DDNS service site and check whether an assigned domain name is valid and whether an IP is properly set in the domain name.



The domain name is mycam10.dyndns.org and the assigned IP is 218.209.90.51. In this case, the IP is assigned by an internet service provider. If you use a router, you should not use the local network IP of your router, but you should register the IP assigned by an internet service provider to a DDNS service site.



Go to [Setup Page>Dynamic DNS Service]

In order to activate DDNS service, change the status that you can enter the form by checking the **[enable/disable DDNS]** box.

Enter your ID and password registered in the DDNS service account.

For URL, enter the domain name assigned by the DDNS service account.

For DNS system, refer to the user's guide in DDNS service site and enter the corresponding content.

For update period, if an IP is static, the update period should be 24 hours. If an IP is dynamic (DHCP), the update period should be the same with or shorter than IP update period.

If you save by clicking the "confirm" button, DDNS service of the camera is activated. The activation is displayed in [DDNS service status]. If the camera is turned off, DDNS service of the camera is terminated.

Connect via the following url address. When using a router, the port number is HTTP port which was already set in the router. (It is set as 8080.)



#### Part 15.19

This device complies with part 15 of the FCC Rules. Operation is subject to the following two conditions: (1) This device may not cause harmful interference, and (2) this device must accept any interference received, including interference that may cause undesired operation.

#### Part 15.21

Any changes or modifications (including the antennas) made to this device that are not expressly approved by the manufacturer may void the user's authority to operate the equipment.

#### RF Exposure Statement

FCC RF Radiation Exposure Statement: This equipment complies with FCC RF radiation exposure limits set forth for an uncontrolled environment. This device and its antenna must not be co-located or operating in conjunction with any other antenna or transmitter.

#### Part 15.105

This equipment has been tested and found to comply with the limits for a Class B digital device, pursuant to part 15 of the FCC Rules. These limits are designed to provide reasonable protection against harmful interference in a residential installation.

This equipment generates, uses and can radiate radio frequency energy and, if not installed and used in accordance with the instructions, may cause harmful interference to radio communications. However, there is no guarantee that interference will not occur in a particular installation. If this equipment does cause harmful interference to radio or television reception, which can be determined by turning the equipment off and on, the user is encouraged to try to correct the interference by one or more of the following measures:

- Reorient or relocate the receiving antenna.
- Increase the separation between the equipment and receiver.
- Connect the equipment into an outlet on a circuit different from that to which the receiver is connected.
- Consult the dealer or an experienced radio/ TV technician for help.

### FCC RF Radiation Exposure Statement

The antenna(s) used for this transmitter must be installed to provide a separation distance of at least 20 cm from all persons and must not be co-located or operation in conjunction with any other antenna or transmitter.