

User Guide of GW-USSuper300

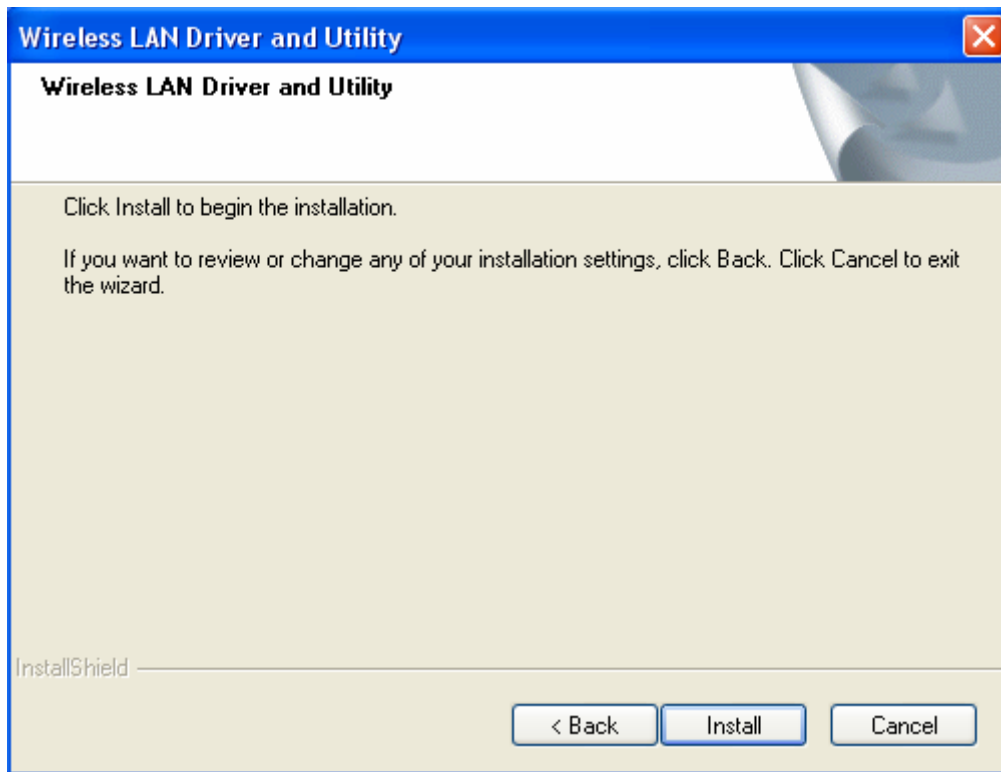
Installing the software of USB Adapter	2
Configuring your wireless network (with Wireless Utility)	5
Configuring your wireless network (with Microsoft Zero Configuration Tool)	11
Wi-Fi Protect Setup (WPS)	13
Pin Input Config (PIN)	14
Push Button (PBC)	18
TX Power	20
Radio Off	21
Disable Adapter	23
Mode Selection	24
Access Point Mode	25
Uninstalling the software	27
Wireless Zero Configuration Troubleshooting	29
Federal Communication Commission Interference Statement	34

Installing the software of USB Adapter

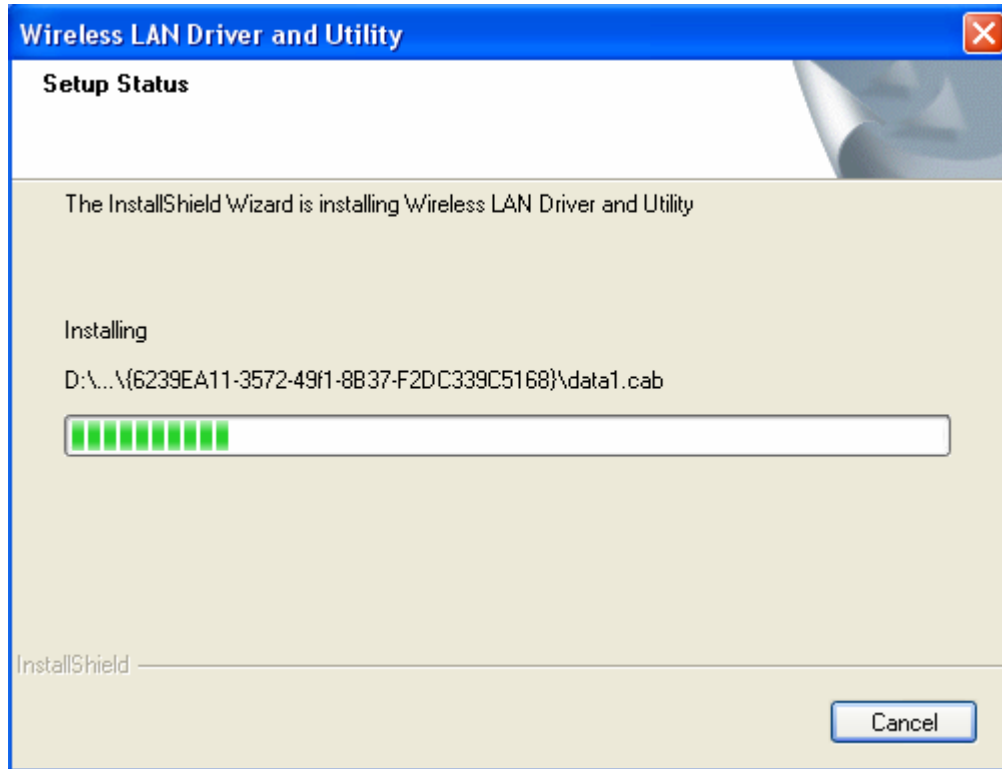
1. Select the setup file to install. The setup program will detect user's language automatically.
2. The setup program will install the driver and utility to computer. Please click the "Next" button to continue.



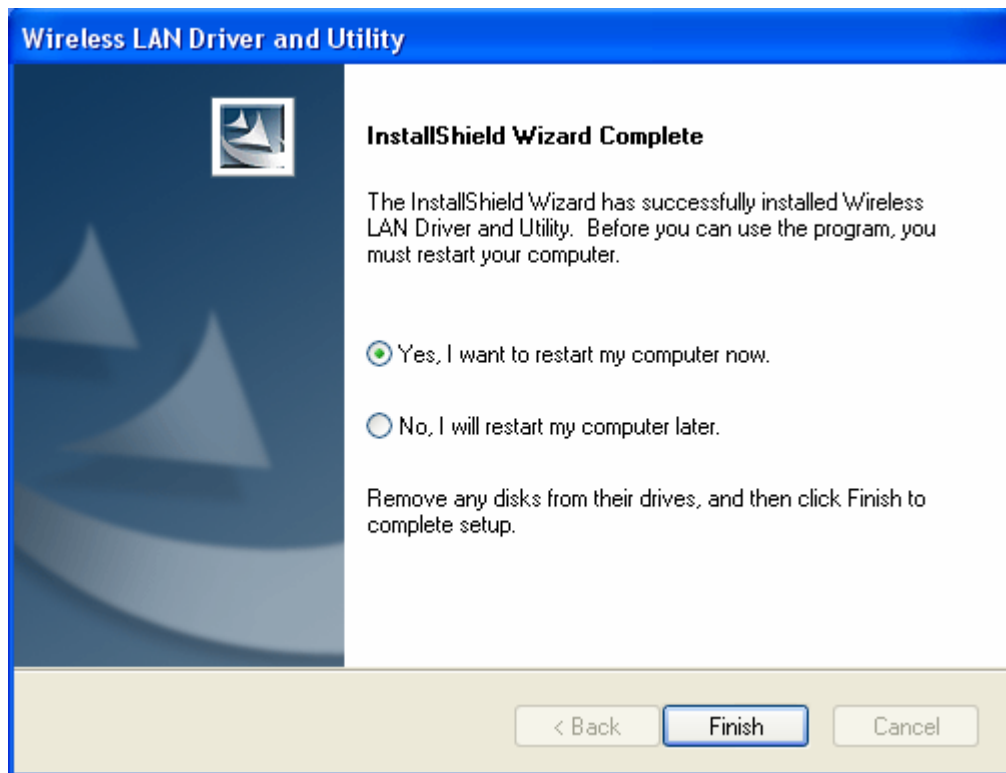
3. The setup program is ready to begin installation. Please click the "Install" button.



4. The software installation should begin. This may take a few minutes.



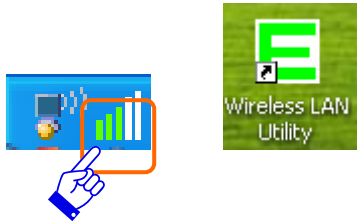
5. Once the installation success, click "Yes" to restart your system (recommended). Otherwise, click "No" to restart your system later.



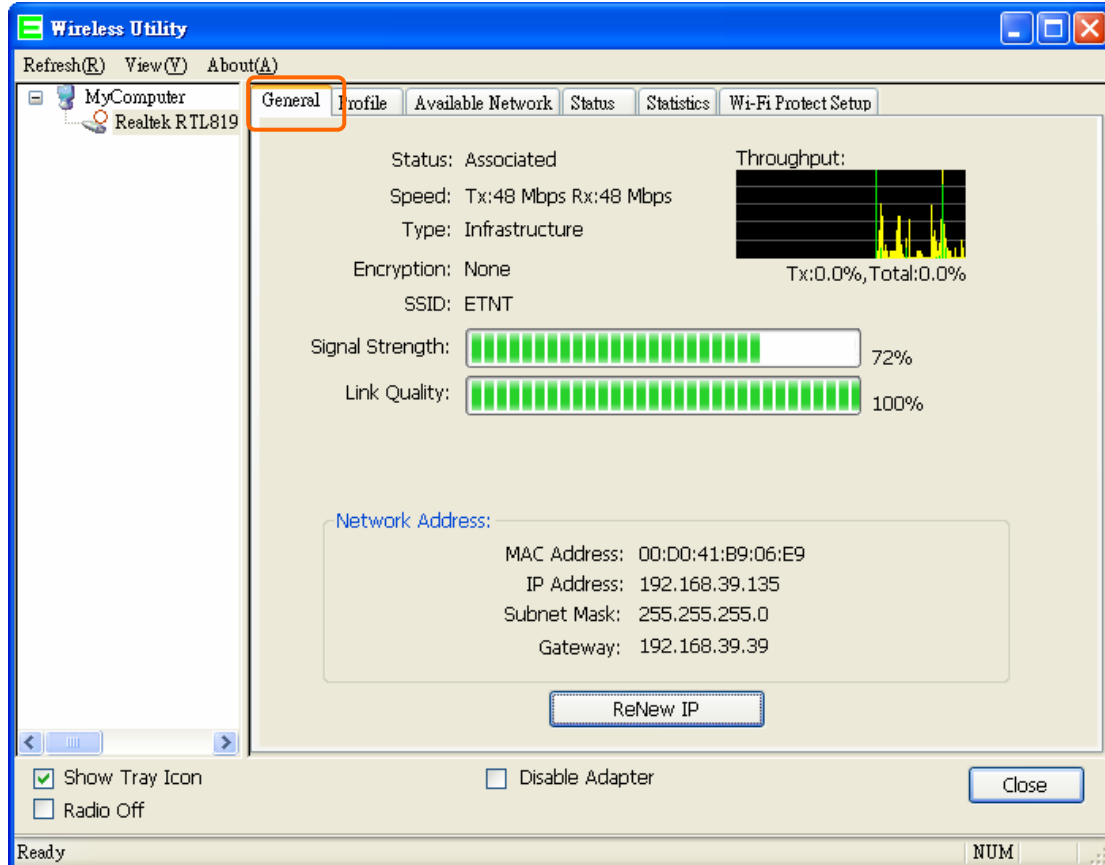
6. Once the installation complete, you may now configure your wireless network.

Configuring your wireless network (with Wireless Utility)

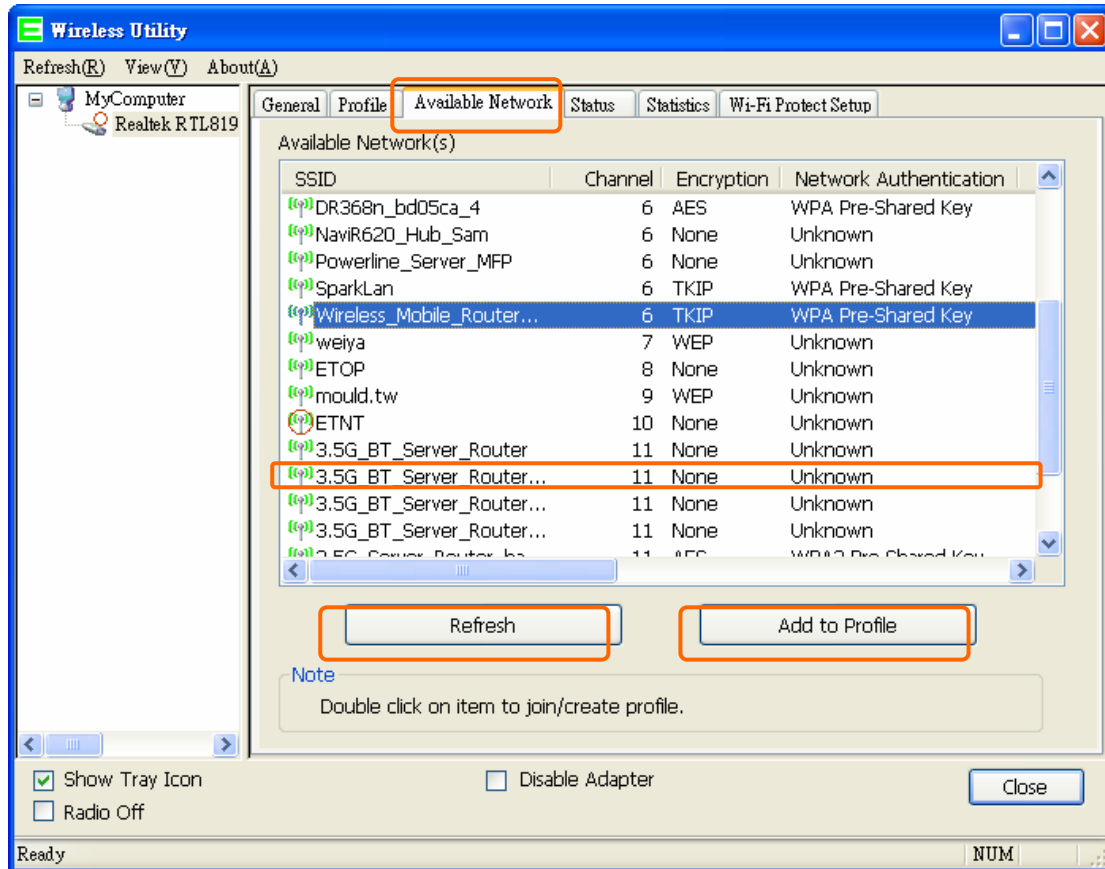
1. Windows XP users, if you chose "Microsoft Zero Configuration Tool" during the software installation please skip to page 11.
2. Double click on the computer with wireless signal icon in your taskbar or the shortcut icon on the desktop.



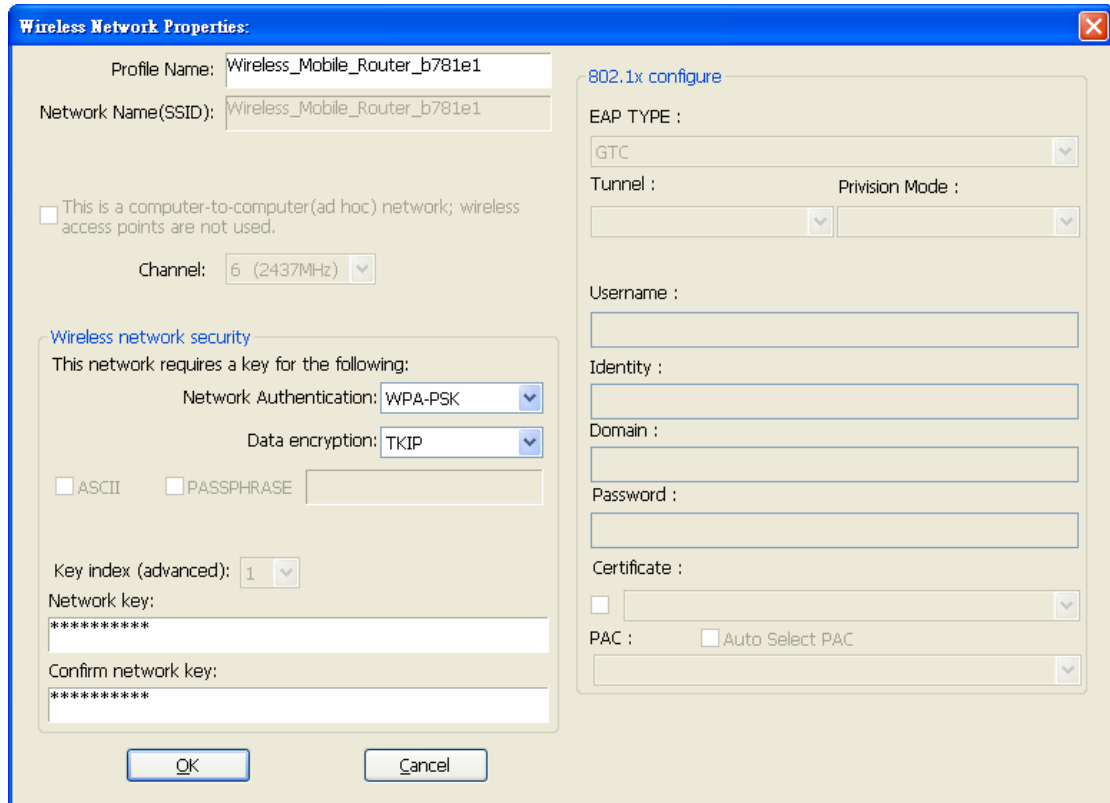
3. It should pop up the Wireless Utility window. And then utility shows the connecting wireless network that connected automatically or was the default network in profile.



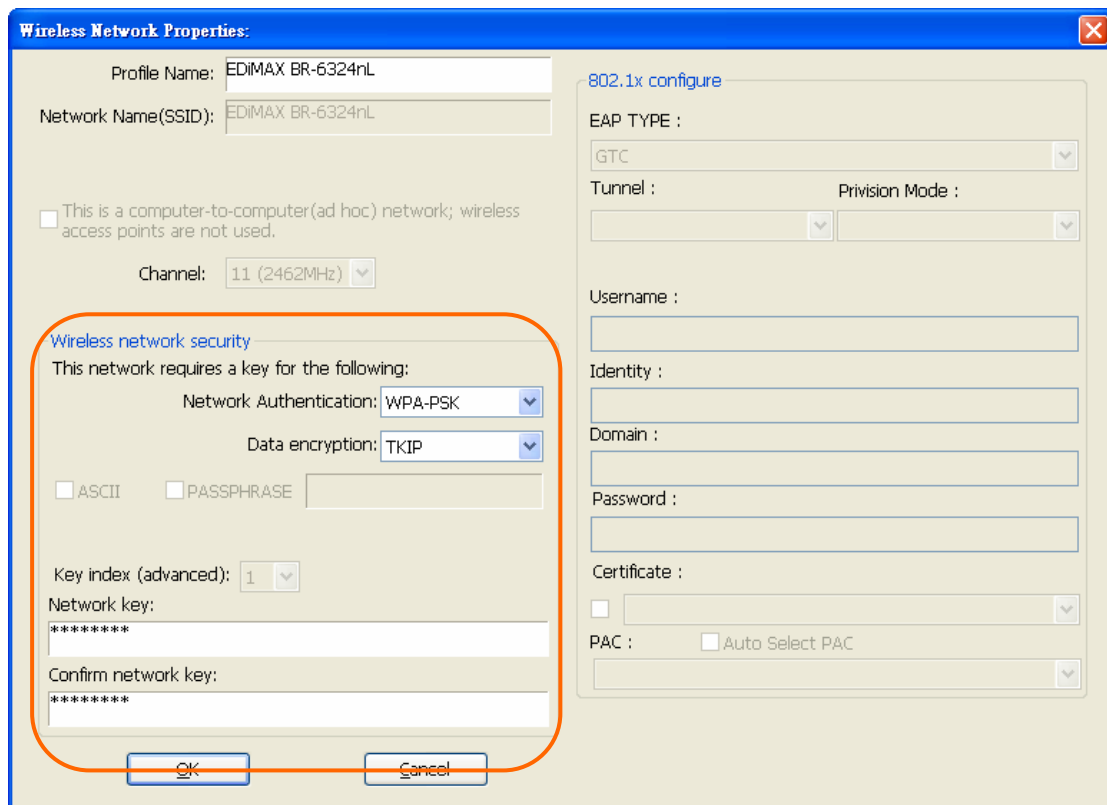
4. Click the "Available Network" tab to the wireless network surveying page. Click the "Refresh" button to scan the area for wireless network(s). Once the scan completed, select the desired wireless network from the list and double click it or click the "Add to Profile" button.



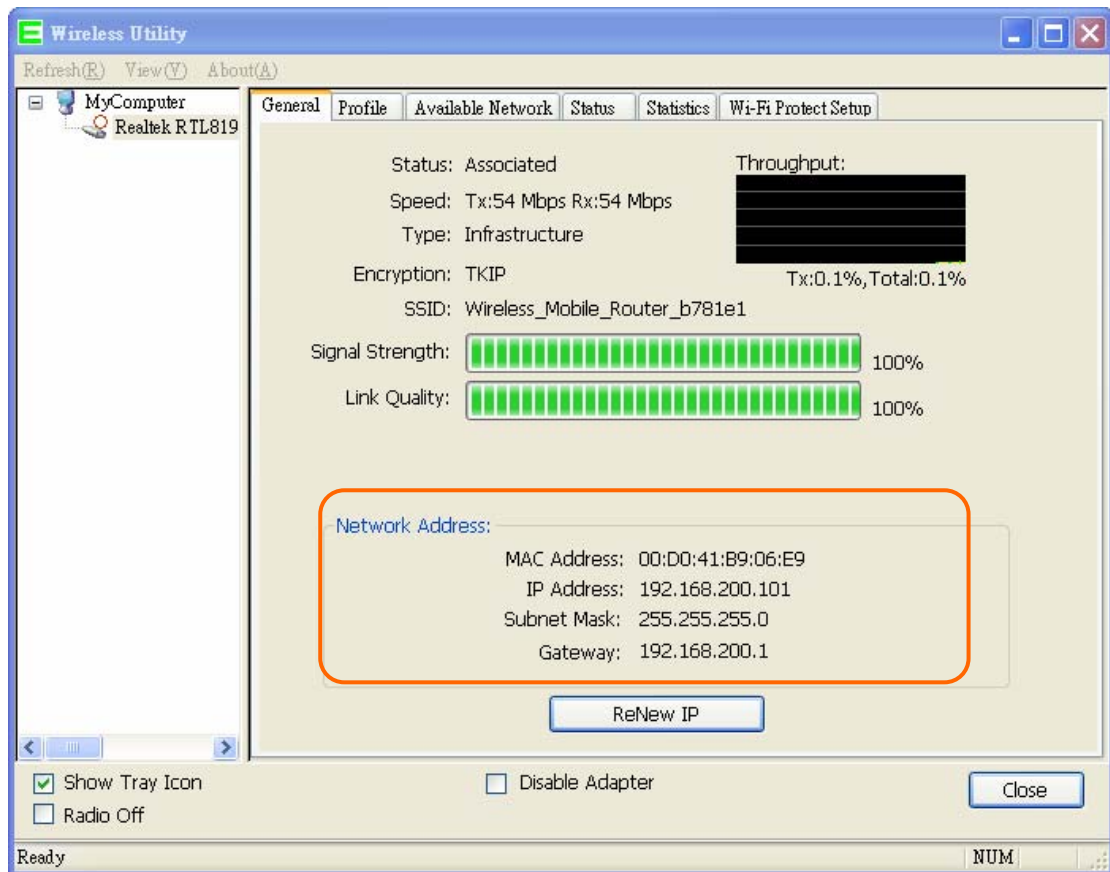
5. It should pop up the wireless Network Properties window. If you do not have any wireless security (WEP, WPA, WPA2, and etc.) set on your wireless network, simply click the “OK” button and skip to step7. If you do have wireless securities on your wireless network, configure the security setting in “Wireless network security” column.



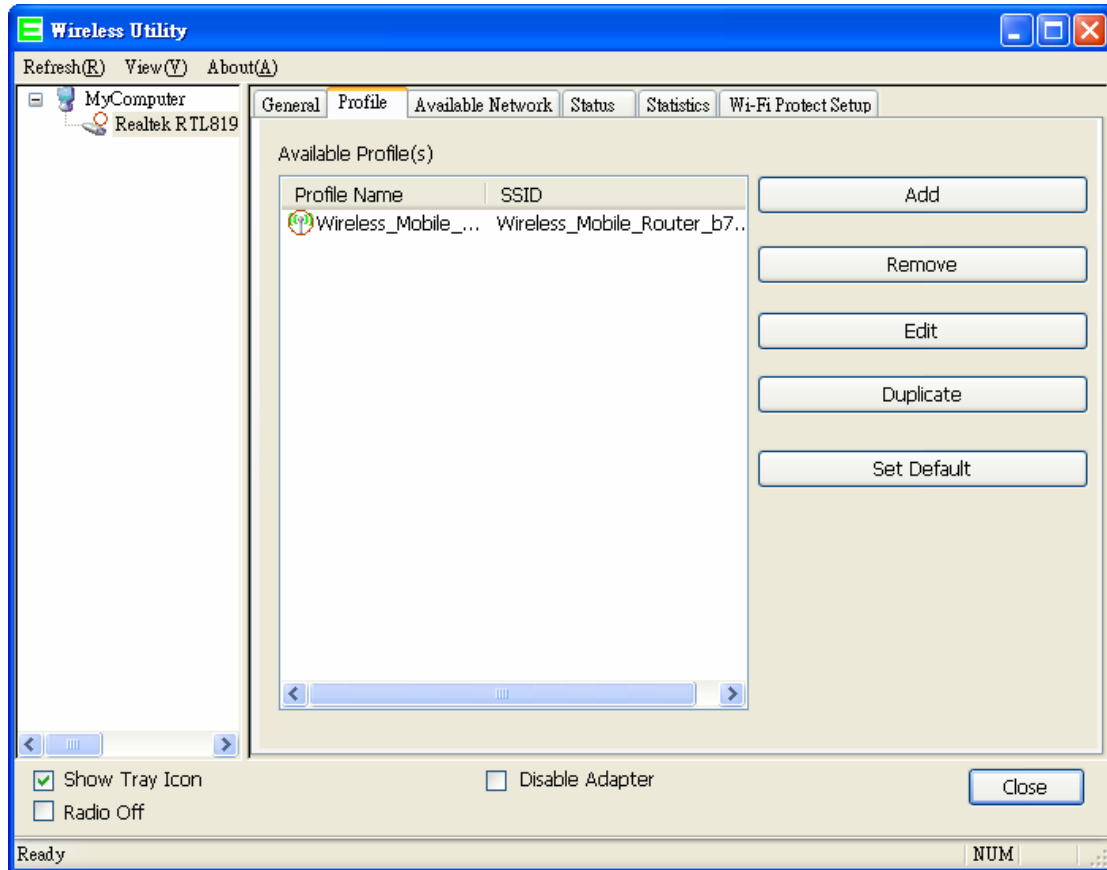
6. Set your wireless securities settings, when it completed, click the "OK" button. Select the Network Authentication and Data encryption to set the encryption type.
 - If you have WEP, typically you select the format and enter your WEP key below the Data encryption.
 - If you have WPA-PSK or WPA2-PSK, typically you only enter your key in the "Network Key" and type again to confirm it.
 - If you have 802.1x configure, typically you only configure your setting in 802.1x configure column.



7. After connected to wireless network, utility will back to "General" page and show the wireless network status. Once the wireless network connected successfully, the Network Address will show the WL307n has gotten the IP address from DHCP.



- Click the "Profile" tab to check the profile page. The wireless network configuration has added in Available Profile(s). It could remove, edit, duplicate and set default the profiles in this page.



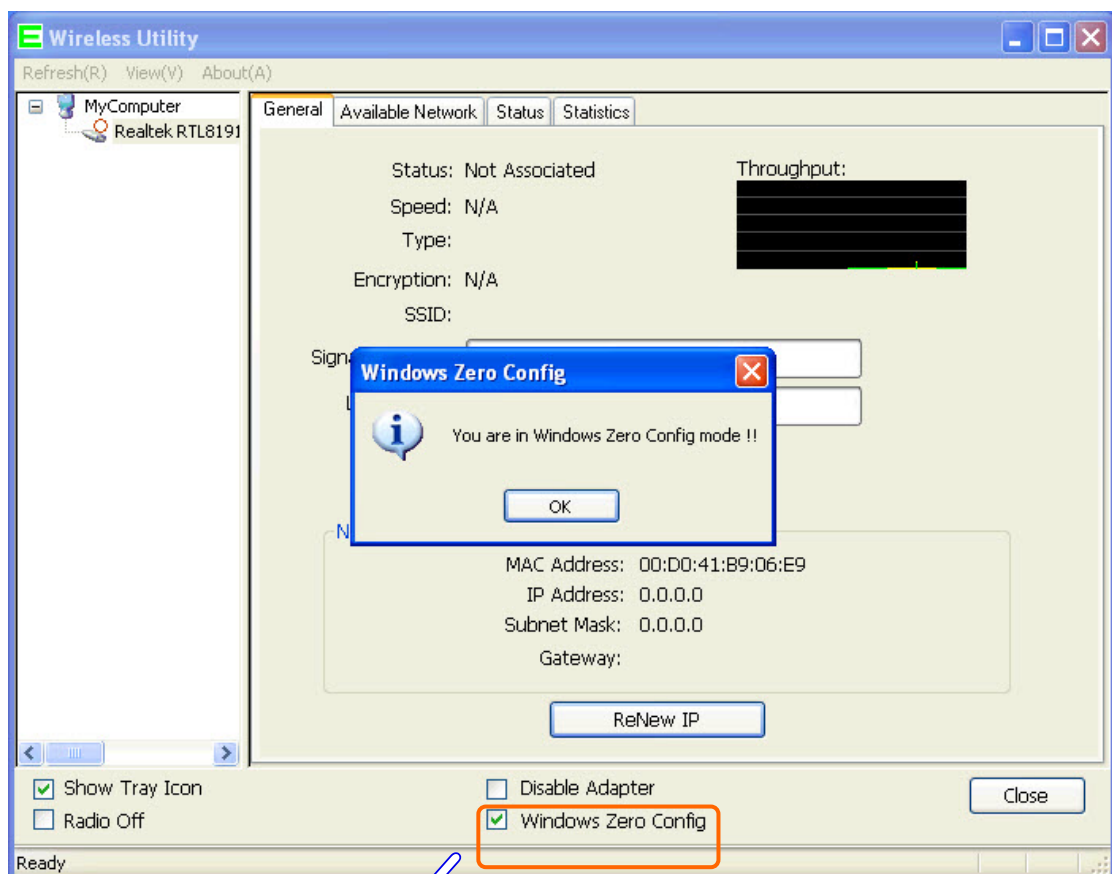
Notice:

If you want to configure WLAN dongle as Ad-Hoc mode, please add a profile and check "This is a computer-to-computer (ad hoc) network; wireless access points are not used."

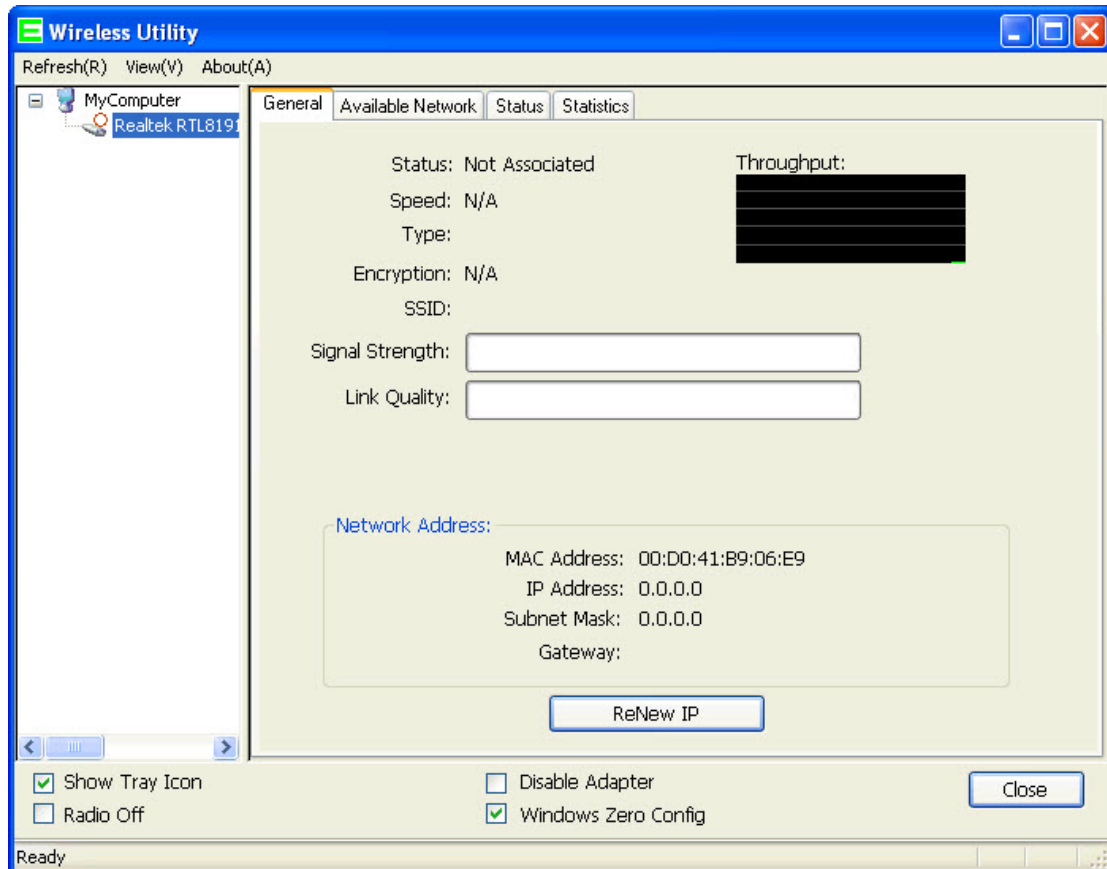
Configuring your wireless network (with Microsoft Zero Configuration Tool)

Warning: Due to security reasons, we strongly recommend updating Windows XP to service pack 2 and above, if you have not done so. If you do not wish to update, please follow the following steps to change the configuration tool between wireless utility and Microsoft Zero configuration tool.

1. Please open the wireless utility. And then enable the "Windows Zero Config" as configuration utility. After enabling the "Windows Zero Config" will pop out a message box, click the "ok" button to continue.

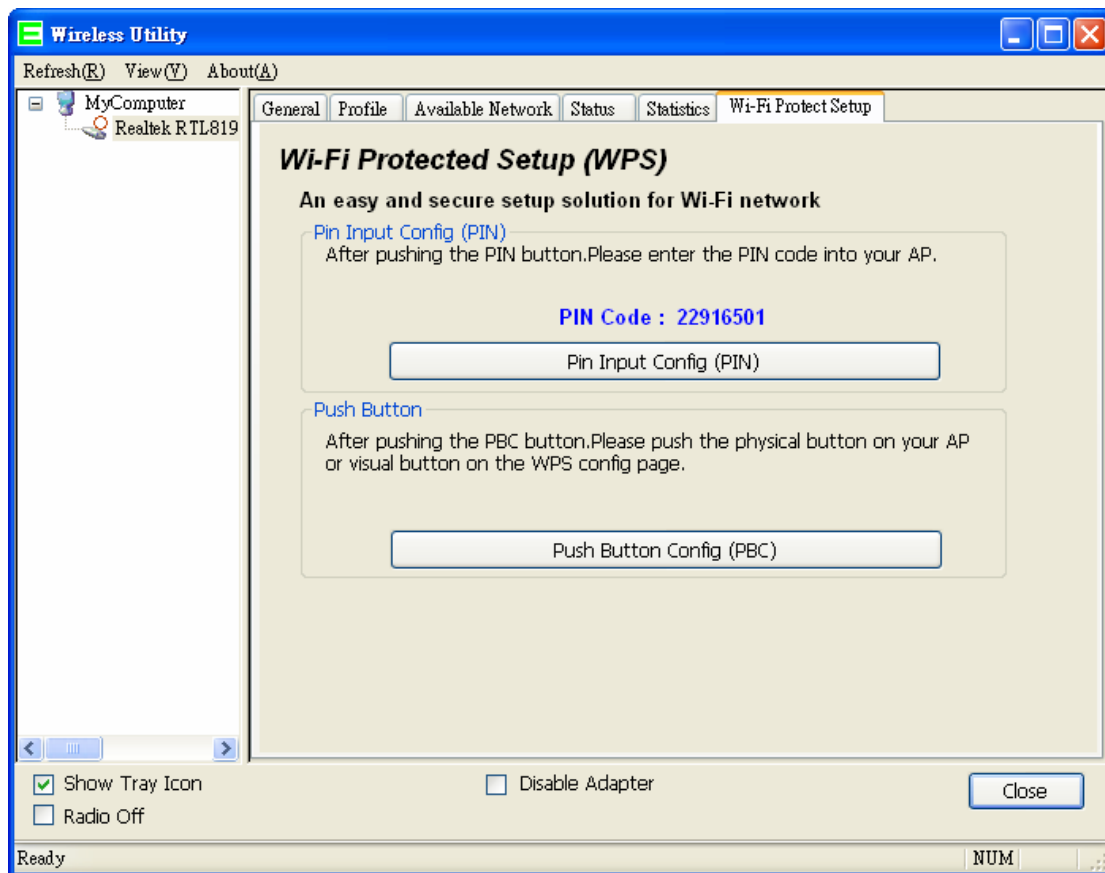


2. Once using Microsoft Zero Configuration Tool to configure wireless network, Wireless Utility will be can not configure.



Wi-Fi Protect Setup (WPS)

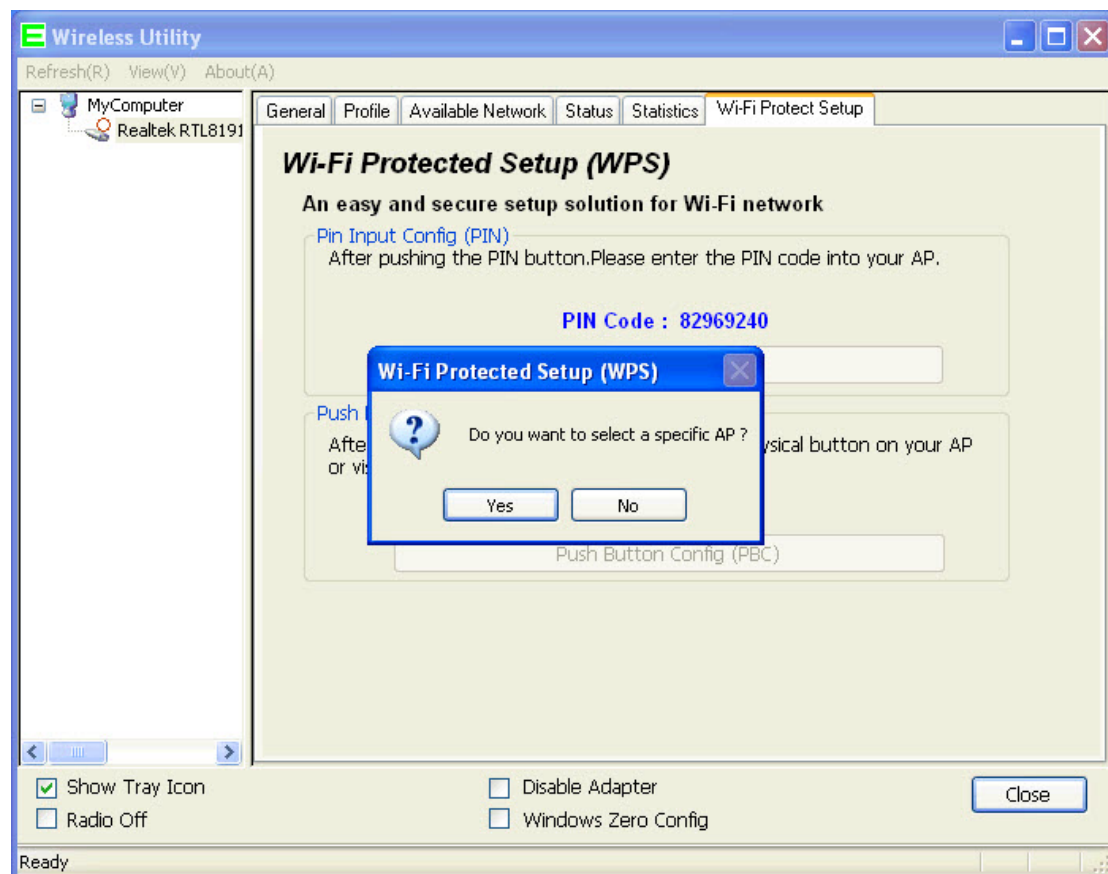
WPS is an easy and secure setup solution for Wi-Fi network. Please click the Wi-Fi Protect Setup tab. WL307n has two methods, PIN (Pin Input Config) and PBC (Push Button Config), to setup the network.



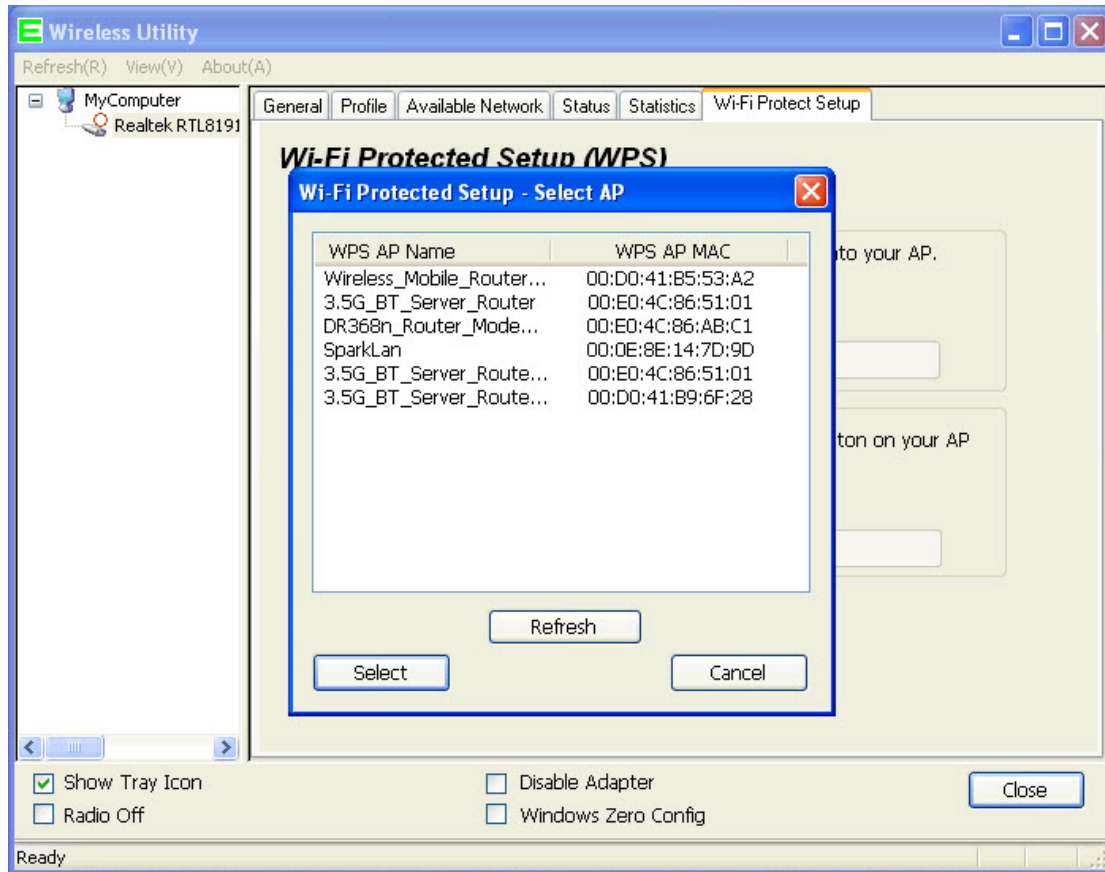
Pin Input Config (PIN)

1. Click on the “Pin Input Config (PIN)” button, and then it should pop up a message box. If you want to connect to a specific AP, please click the “Yes” button. Or please click the “No” button to continue and skip to step 3.

Note: Every time you click the tab to change the page, the PIN code will be changed.

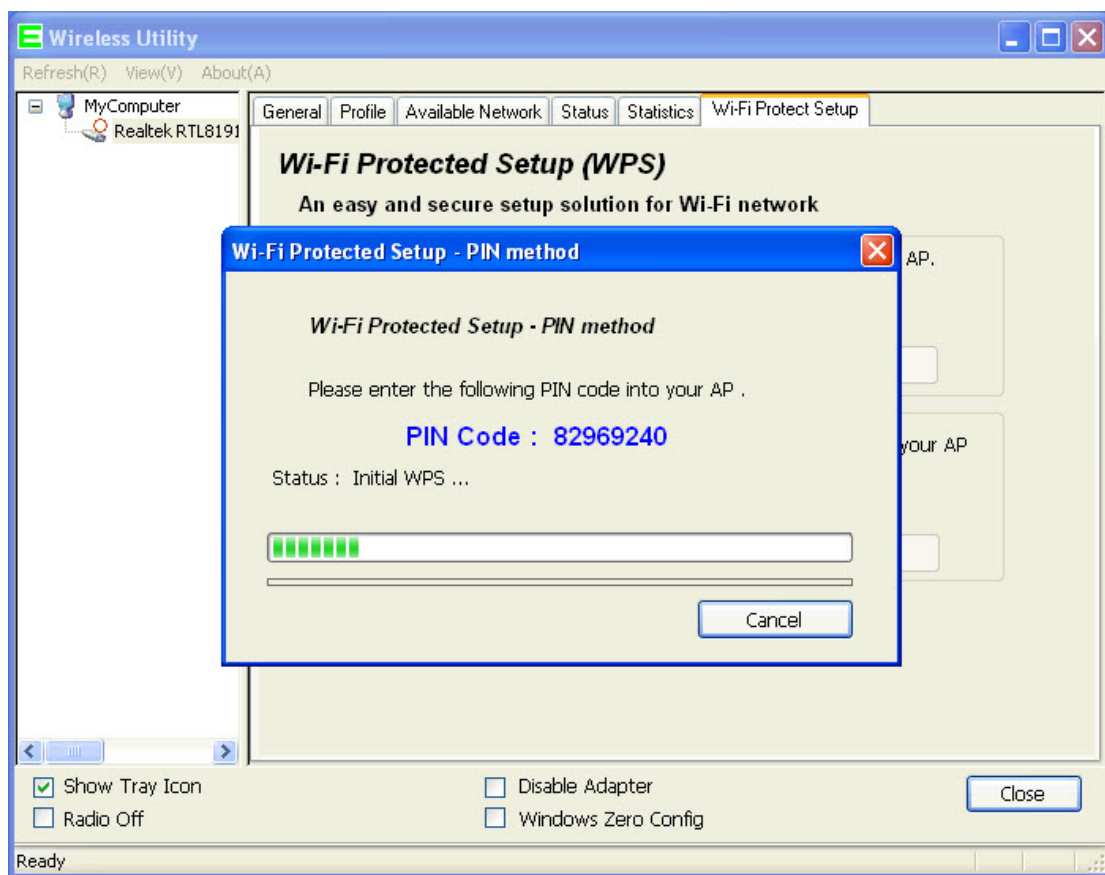


2. Select the specific AP which you want to connect. If you can not find the WPS AP in this page, please click the "Refresh" button. And then click the "Select" button.



3. WL307n is waiting for the AP to establish the connection. And then enter the PIN code into the AP that you want to connect. For example, the AP uses BR360n to be the connecting device. Enter the PIN code into client pin number and then clicks the "Start PIN" button.

Note: The PIN function in AP should be started before the WPS setup in WL307n times out.



Wi-Fi Protected Setup

This page allows you to change the setting for WPS (Wi-Fi Protected Setup). Using this feature could let your wireless client automatically synchronize its setting and connect to the Access Point in a minute without any hassle.

Disable WPS

WPS Status: Configured UnConfigured

Self-PIN Number: 58652459

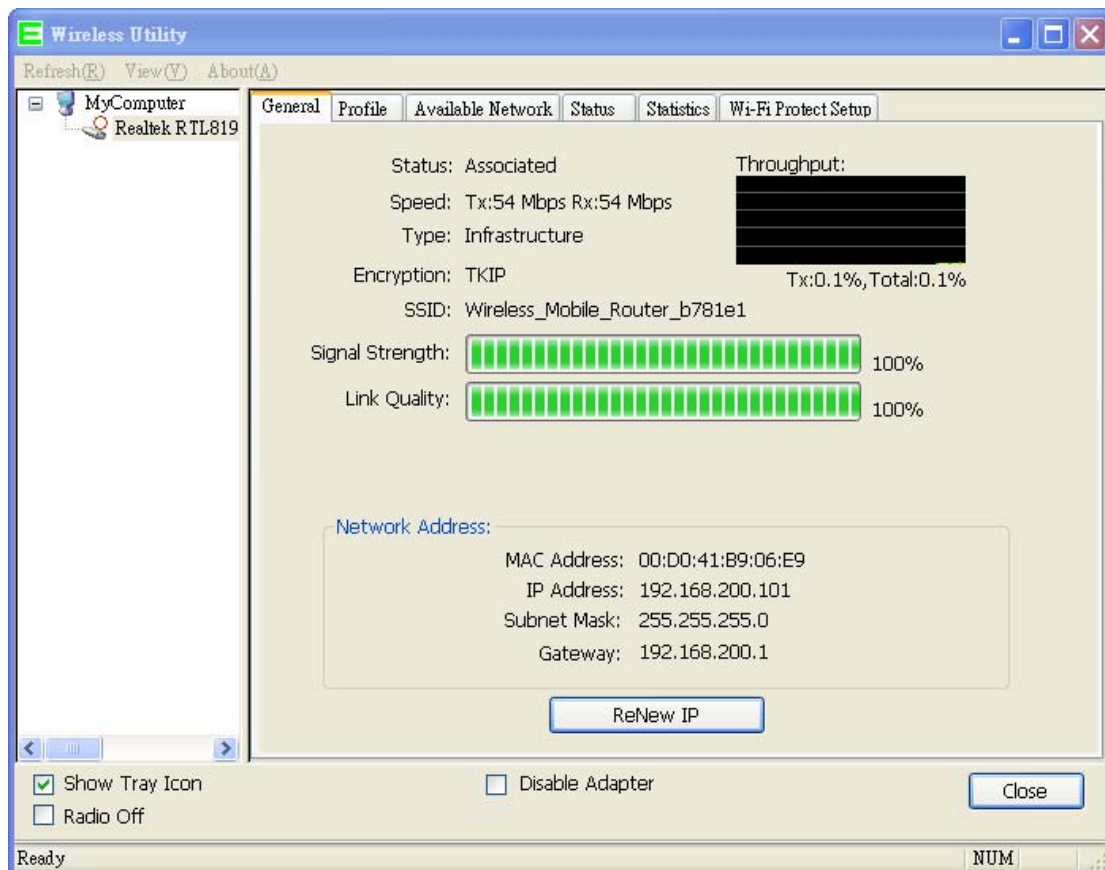
Push Button Configuration:

Current Key Info:

Authentication	Encryption	Key
WPA PSK	TKIP	1234567890

Client PIN Number:

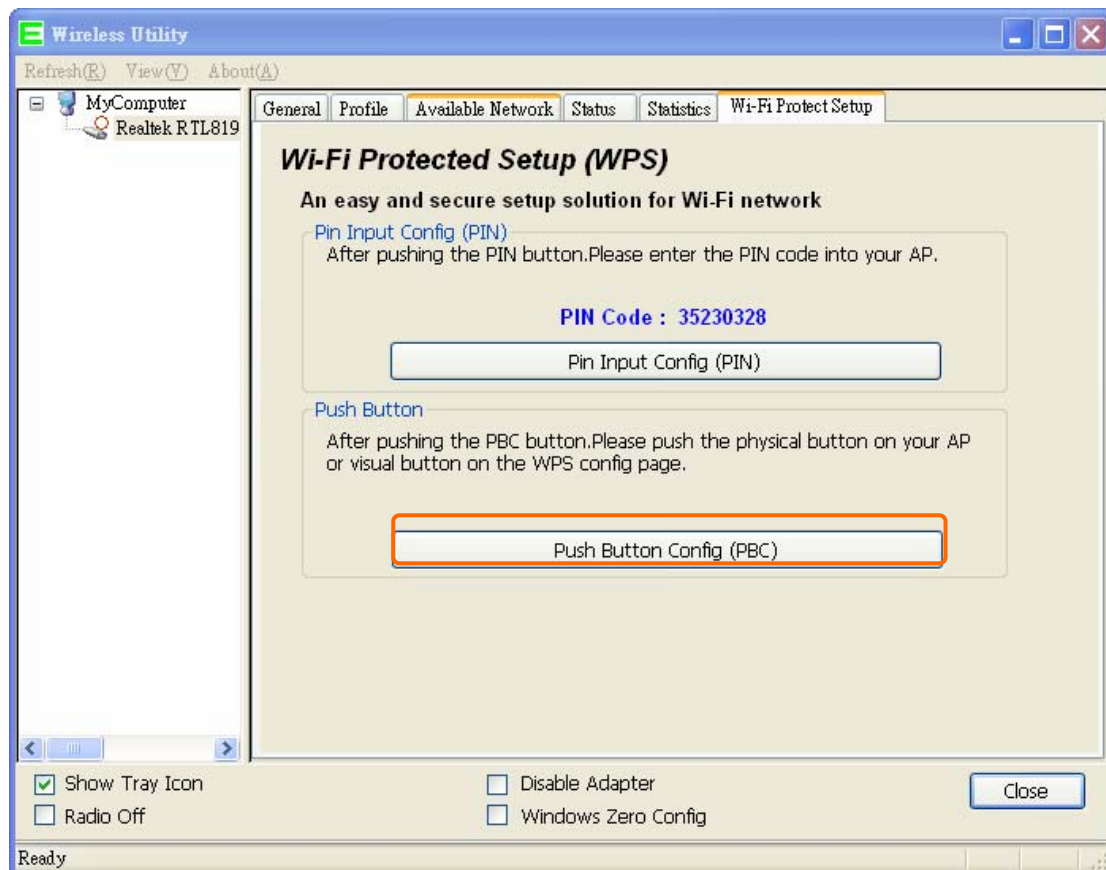
- Once the WPS connected successfully, wireless utility will show the connection status.



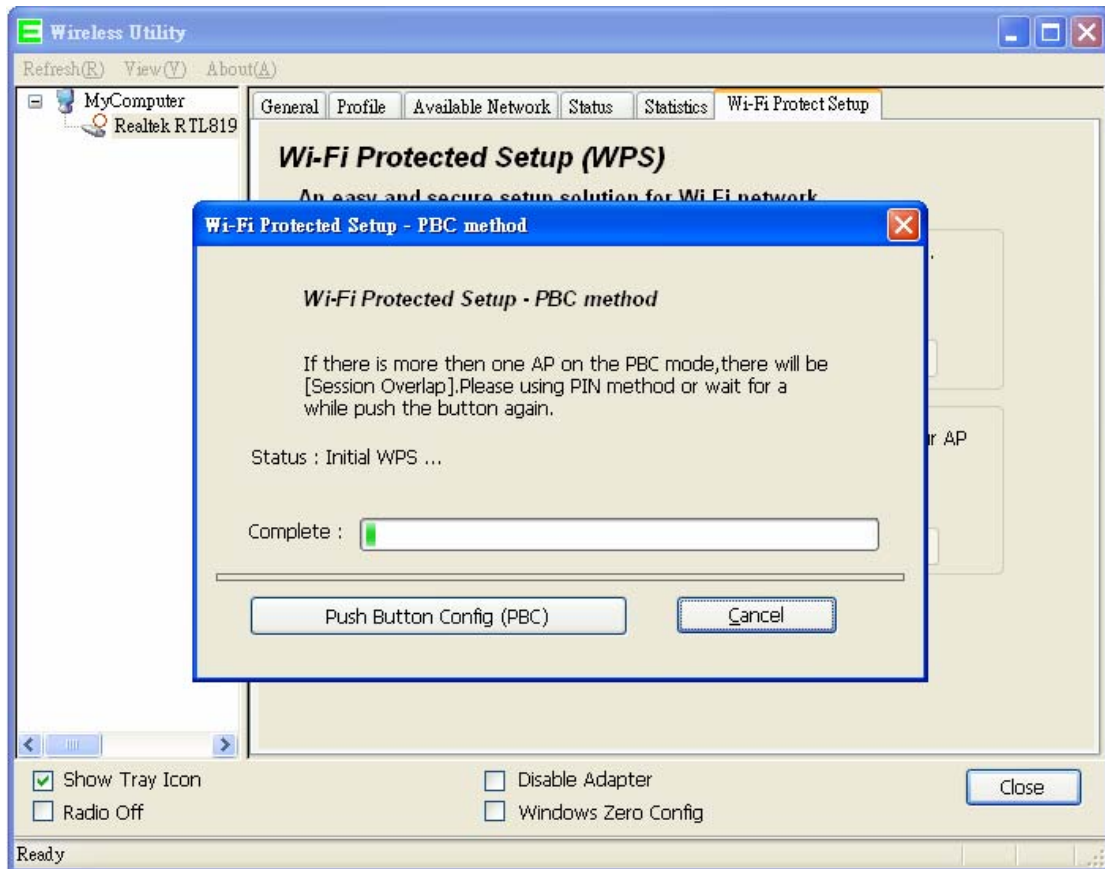
Push Button (PBC)

1. Click on the “Push Button Config (PBC)” button.

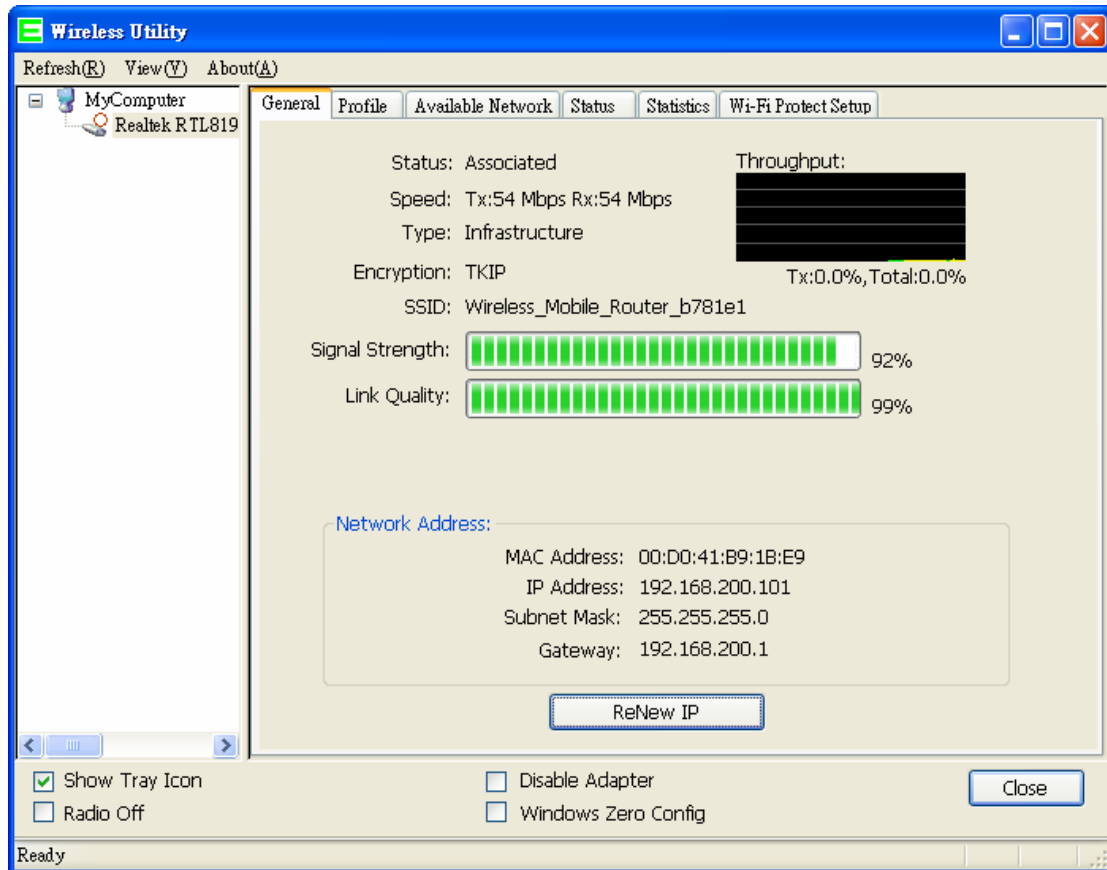
Note: The PBC button can click the visual button on the page or push the physical button on AP.



2. WL307n is waiting for the other AP to start the PBC function. The other AP starts the PBC function should be before WL307n WPS times out.

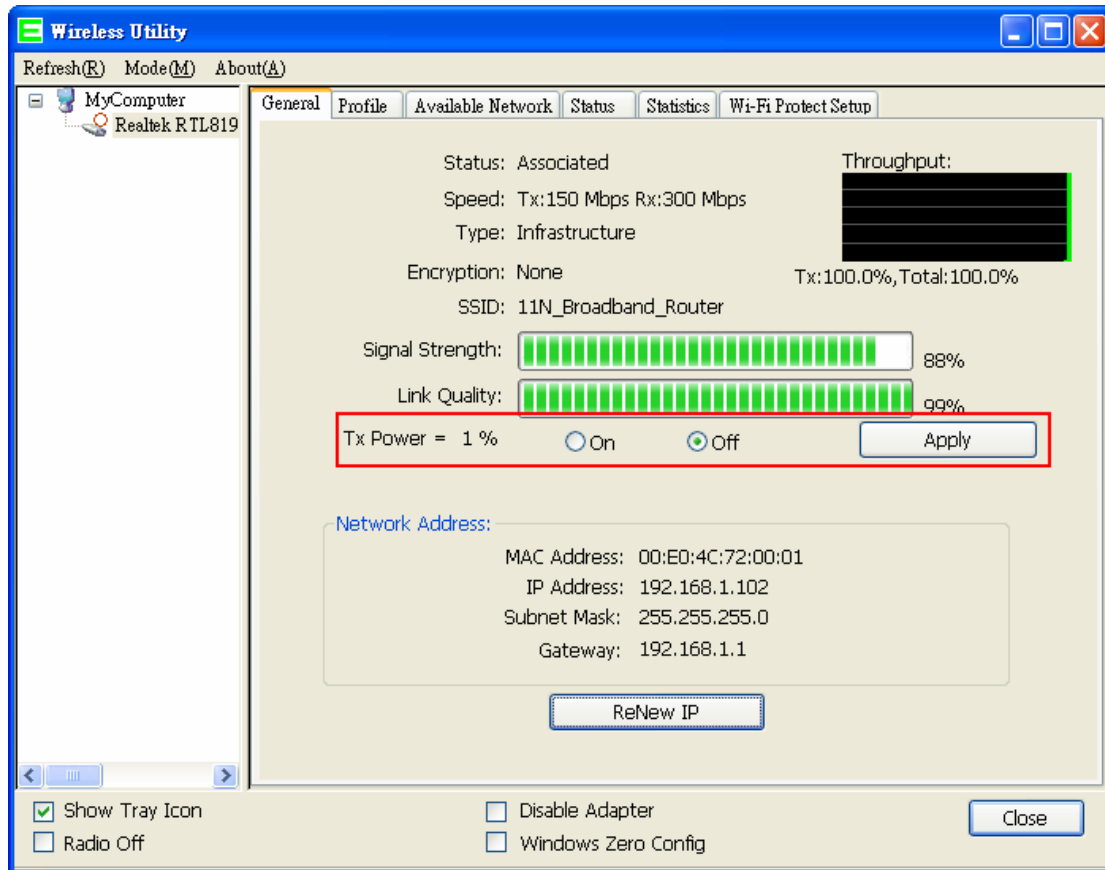


3. Once WPS connected successfully, Wireless Utility will show the connection status.



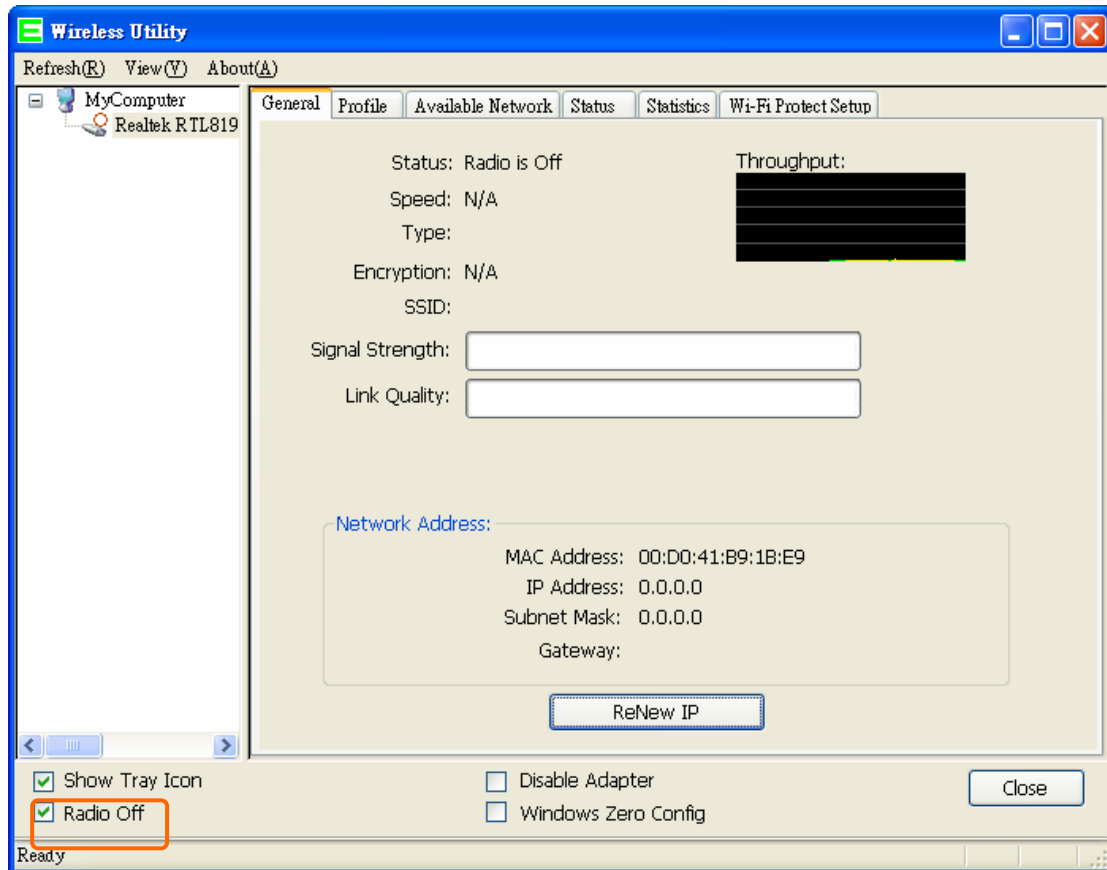
TX Power

Users can turn on or off the TX power option, the default is "off".



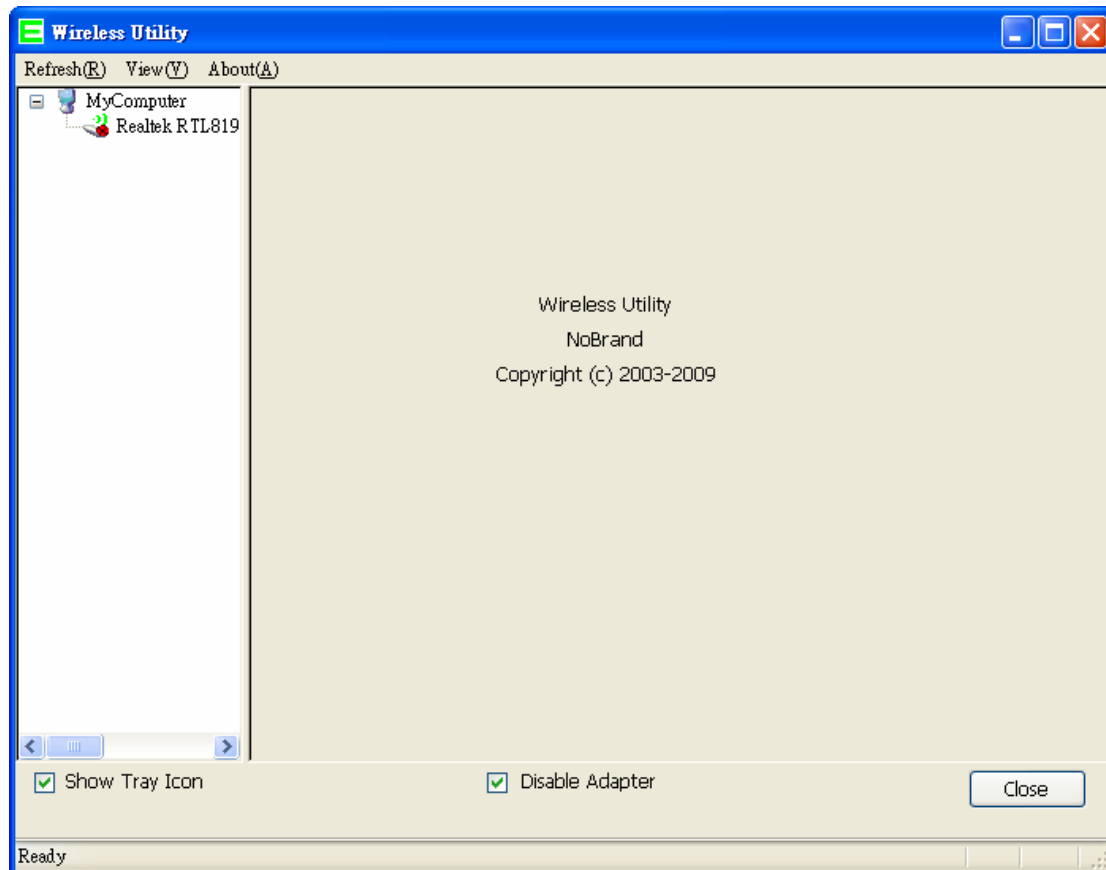
Radio Off

Enable the Radio Off will turn off the radio function. It means WL307n will turn off the wireless function. The wireless network connection will be disconnected.



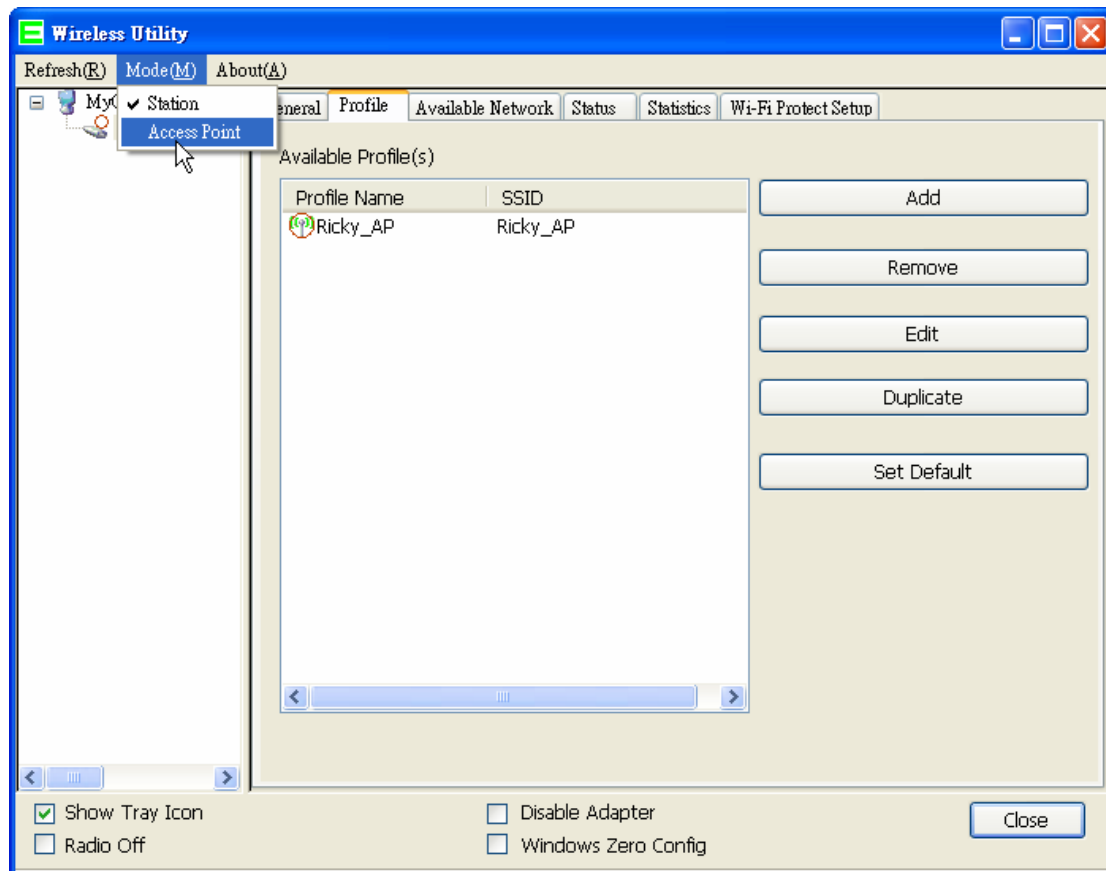
Disable Adapter

Disable the WL307n adapter will turn off the USB adapter function. It means all functions of WL307n will be turn off.

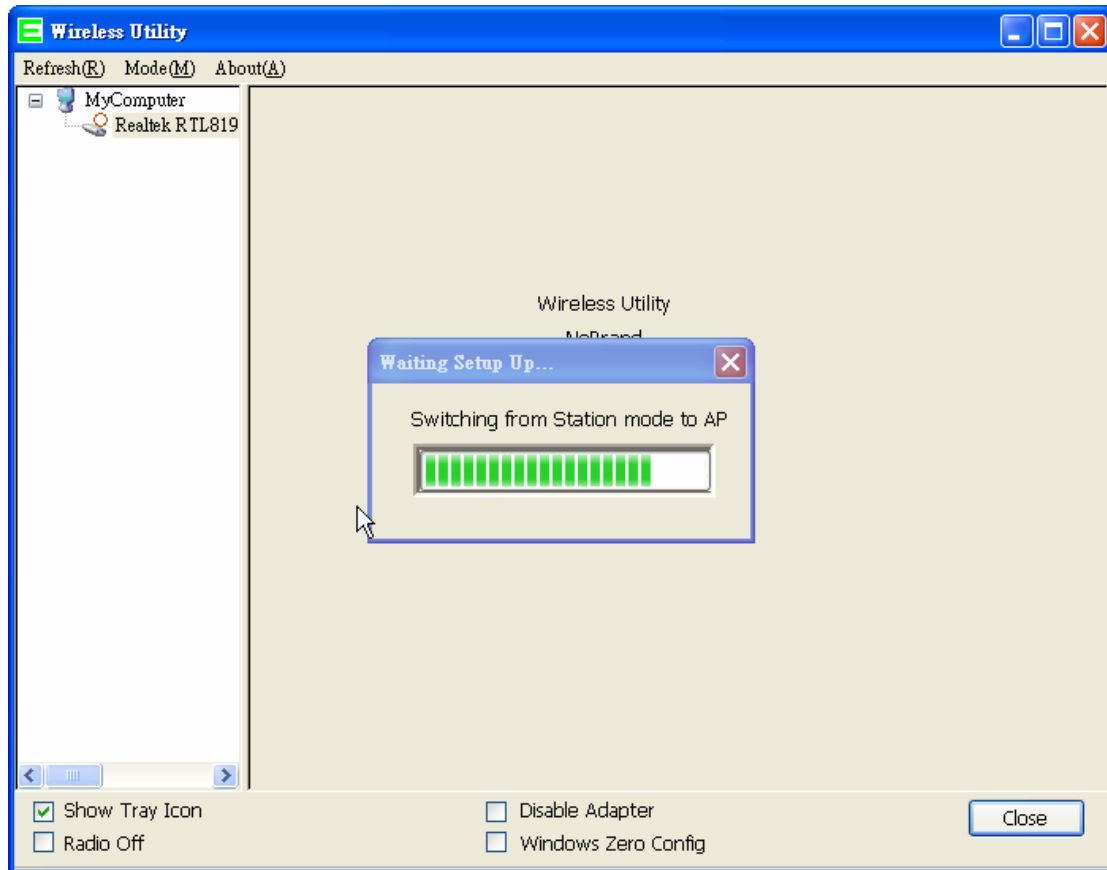


Mode Selection

Users can switch between Station and Access Point modes.



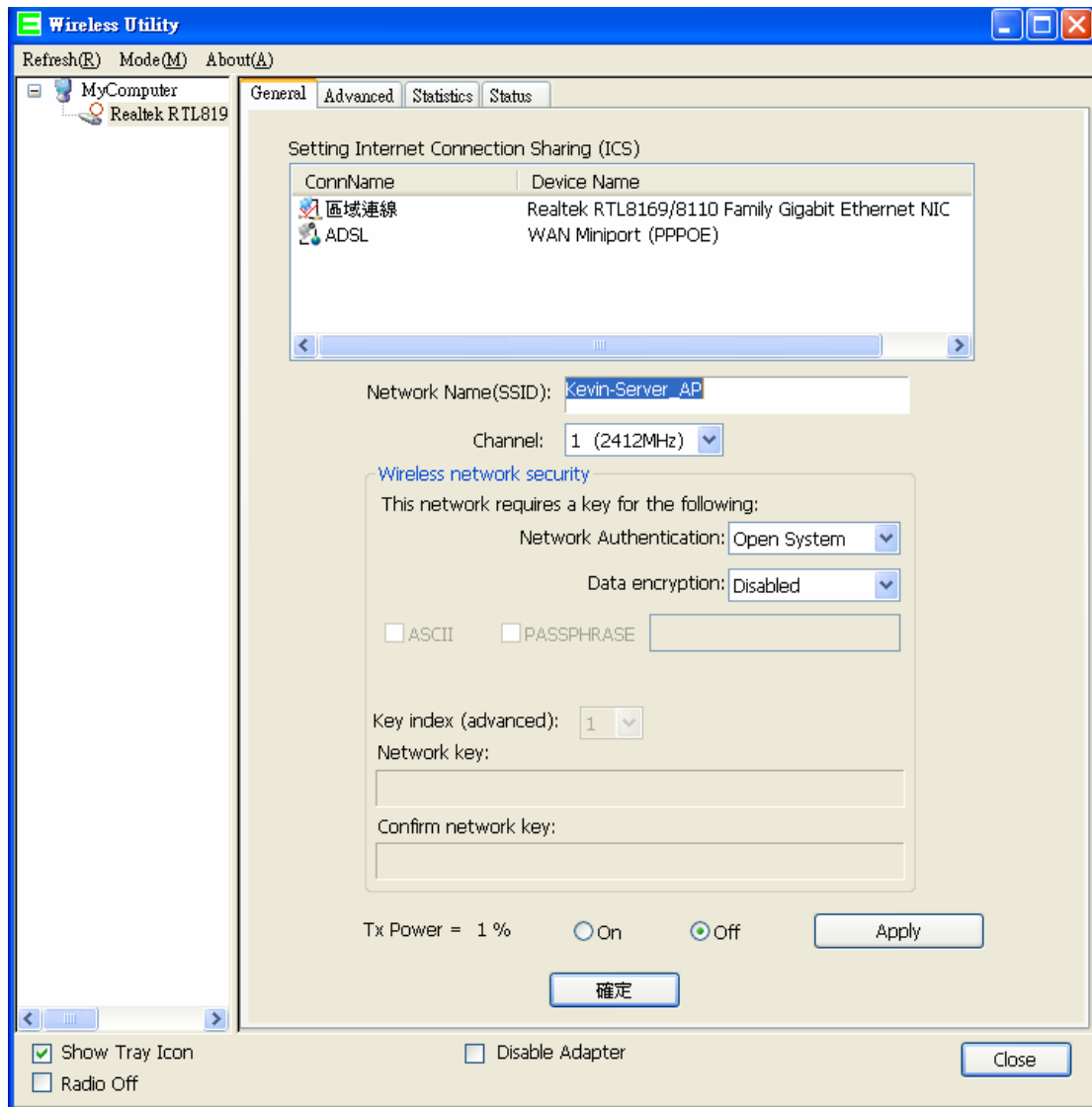
Selection Access Point Mode.



Changing to AP mode.

Access Point Mode

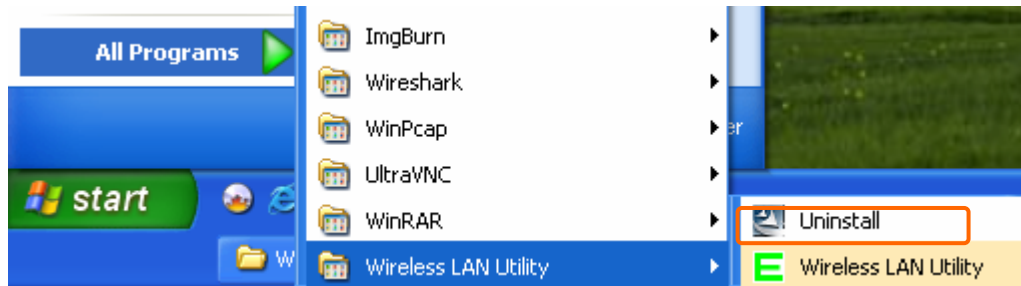
Access Point Mode can share your network to others. In ICS panel users can select which network to be shared.



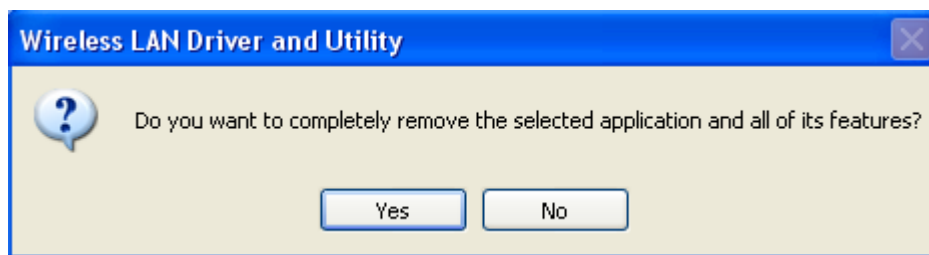
1. **Network Name**
Give a SSID to shared network.
2. **Channel**
Select a channel for shared network.
3. **Network Authentication**
Select authentication type for shared network.
4. **Data encryption**
Select to enable/disable data encryption.
5. **Network Key**
Setup network key for shared network.
6. **Tx Power**
Select to turn on or off the Tx power, the default is "off".

Uninstalling the software

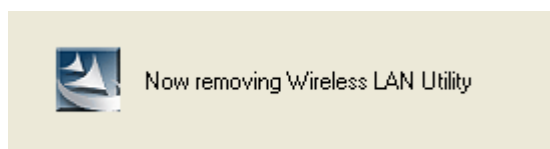
1. Click on your start menu. Next go to "Programs" or "All Programs". Next go to the folder "Wireless". Next select "Uninstall".



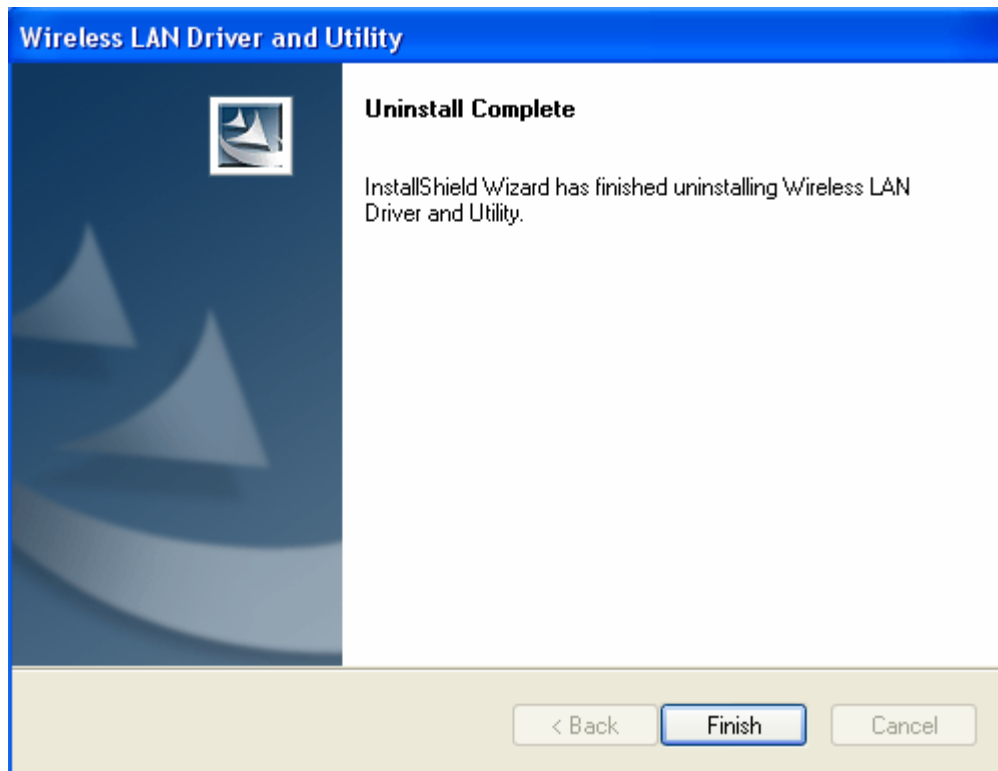
2. The uninstall window should pop up. Click on "Yes" button.



3. The uninstall process should begin and may take a few minutes. Once completed, click "Finish" to close the uninstall window.

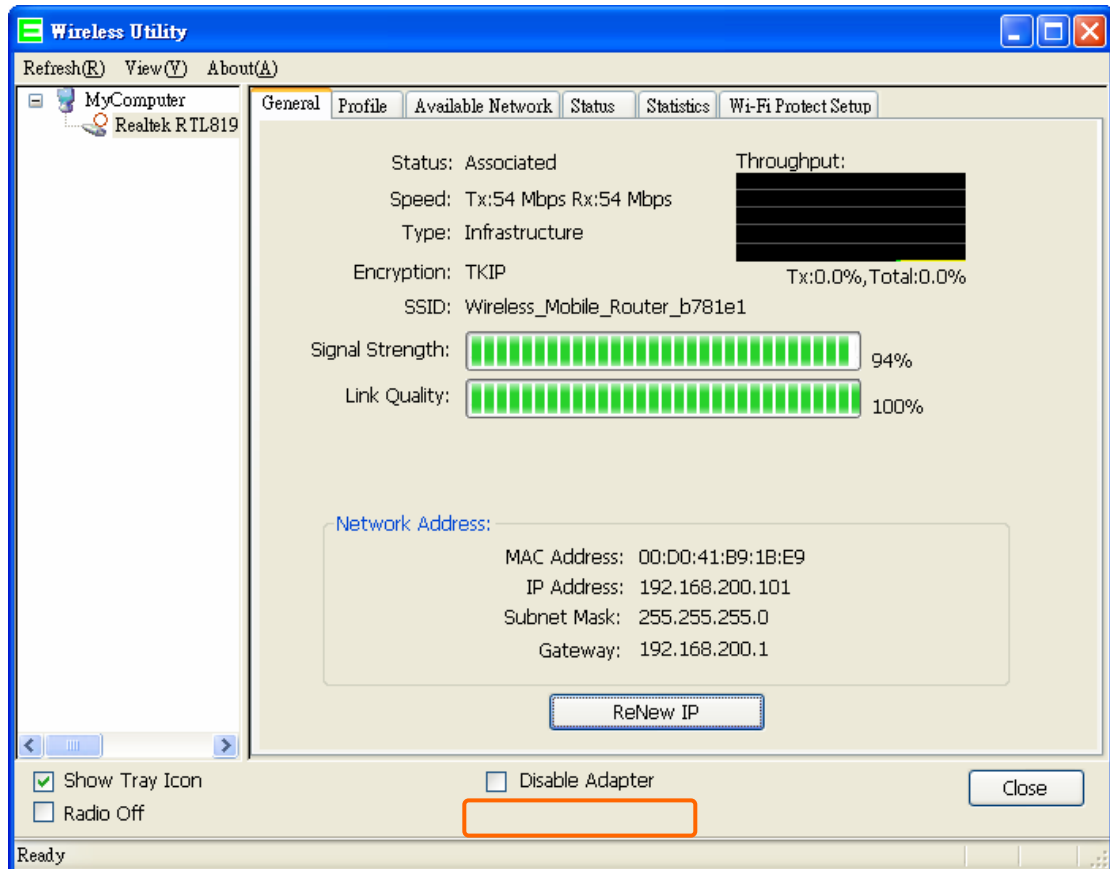


4. Once it's complete, click the "Finish" button to exit the uninstall program.

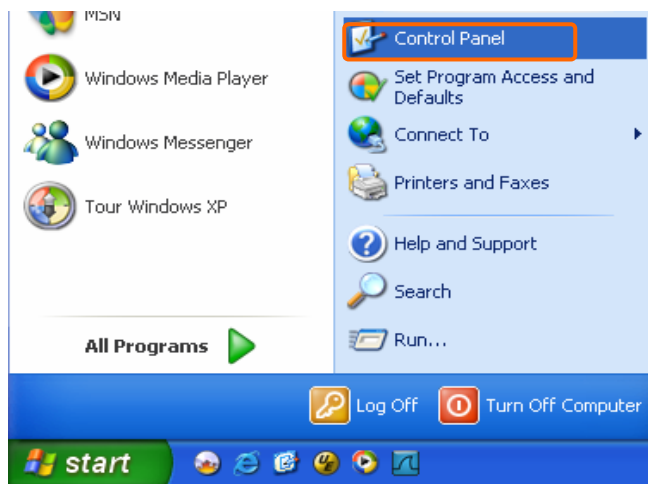


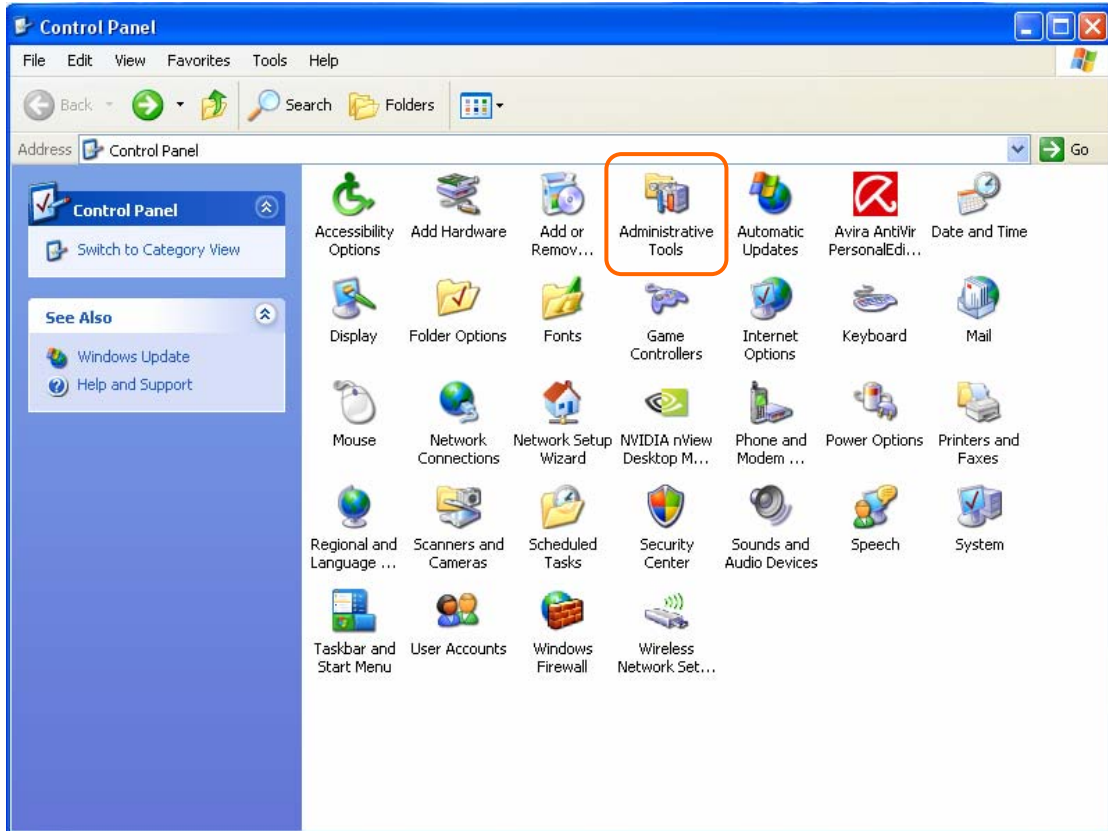
Wireless Zero Configuration Troubleshooting

If you are Windows XP user and you can not see the check option of “Windows Zero Config”, such as following figure, please do the following steps.

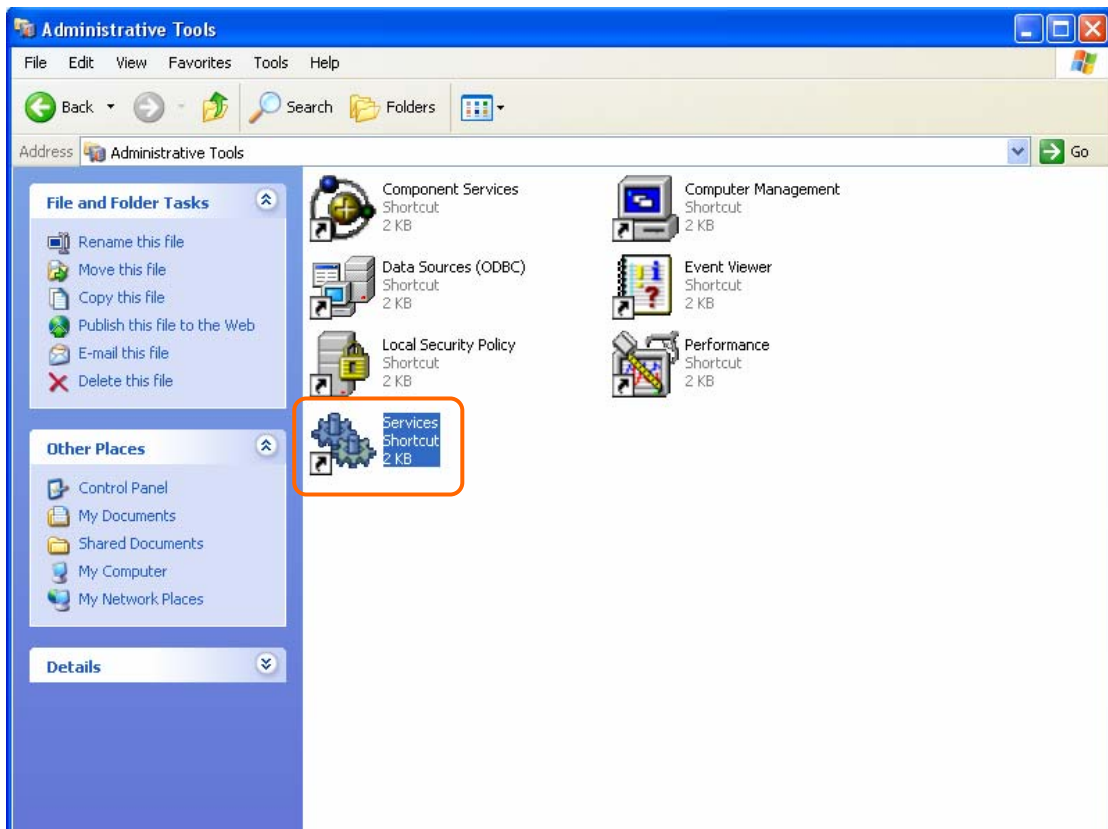


1. Click on your start menu and then click the “control panel” into control panel. Next click the “Administrative Tools”.

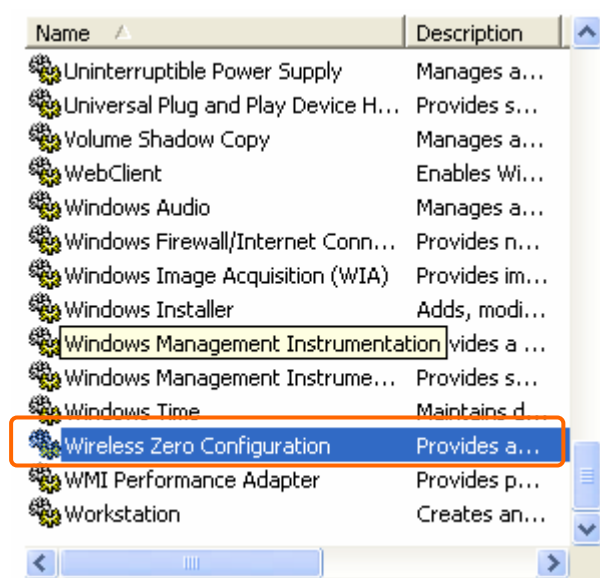
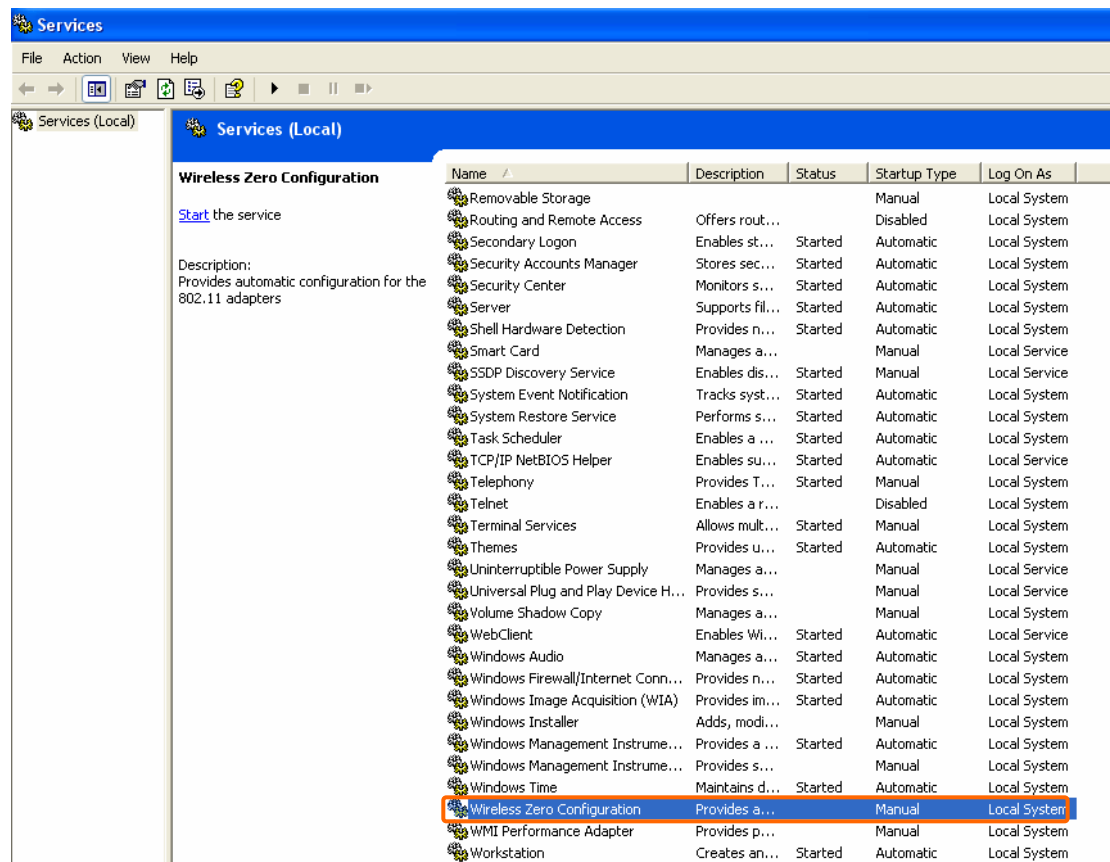




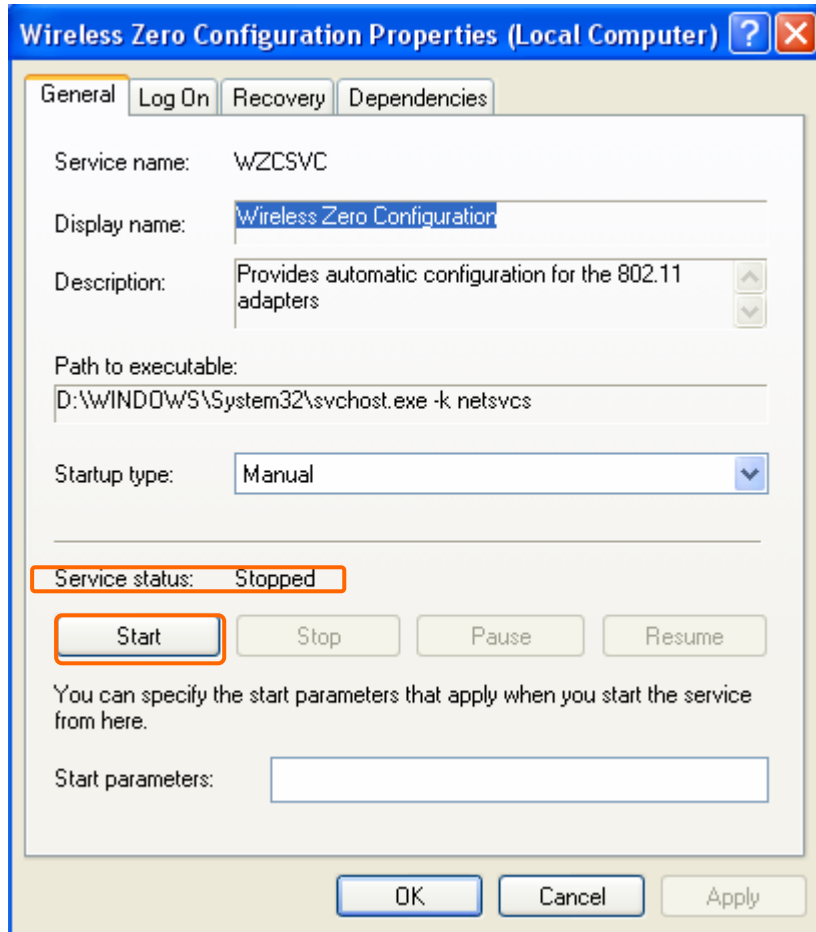
2. Click on the "Services" item.



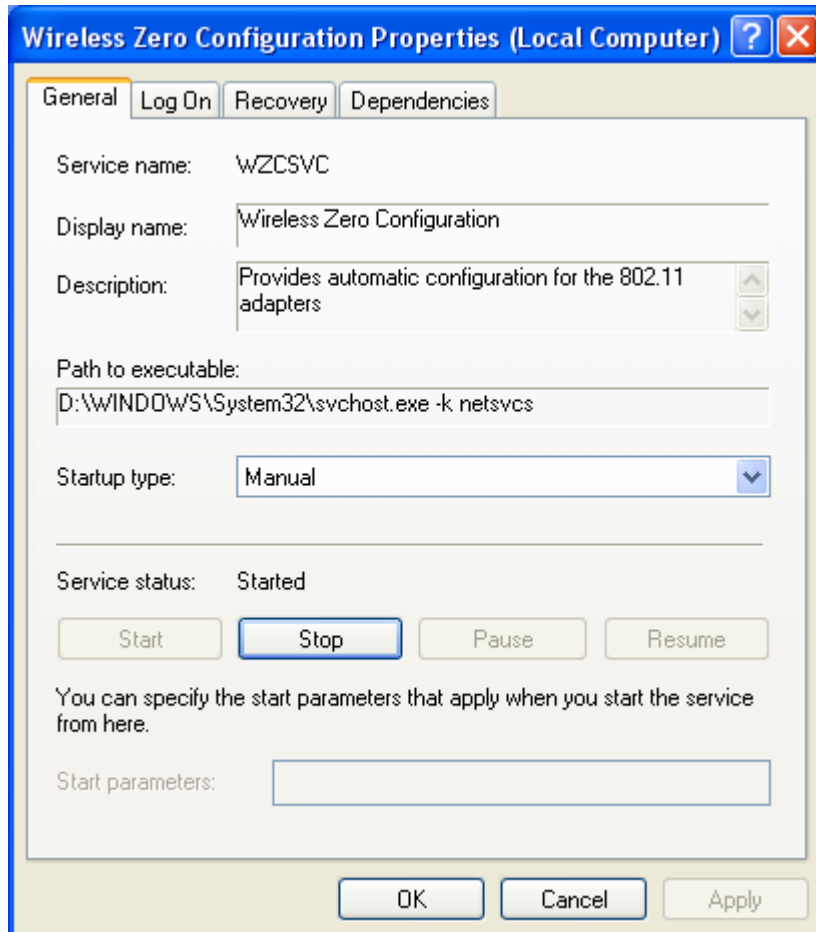
- It will pop up the Services window. Select the “Wireless Zero Configuration” or “Wireless Configuration” item and double click it.



4. It will pop up the Wireless Zero Configuration Properties window. The "Service status" should be in "Stopped" state now. Click the "Start" button to enable the Wireless Zero Configuration function.



5. Once the setting completes, the "Service status" become to "Started".
Click the "OK" button to finish it and the WL307n Wireless Utility can see the check option of "Windows Zero Config".



Federal Communication Commission Interference Statement

This equipment has been tested and found to comply with the limits for a Class B digital device, pursuant to Part 15 of the FCC Rules. These limits are designed to provide reasonable protection against harmful interference in a residential installation.

This equipment generates, uses and can radiate radio frequency energy and, if not installed and used in accordance with the instructions, may cause harmful interference to radio communications. However, there is no guarantee that interference will not occur in a particular installation. If this equipment does cause harmful interference to radio or television reception, which can be determined by turning the equipment off and on, the user is encouraged to try to correct the interference by one of the following measures:

- . Reorient or relocate the receiving antenna.
- . Increase the separation between the equipment and receiver.
- . Connect the equipment into an outlet on a circuit different from that to which the receiver is connected.
- . Consult the dealer or an experienced radio/TV technician for help.

FCC Caution: To assure continued compliance, any changes or modifications not expressly approved by the party responsible for compliance could void the user's authority to operate this equipment. (Example - use only shielded interface cables when connecting to computer or peripheral devices).

FCC Radiation Exposure Statement

This equipment complies with FCC RF radiation exposure limits set forth for an uncontrolled environment. This equipment should be installed and operated with a minimum distance of 20 centimeters between the radiator and your body.

This transmitter must not be co-located or operating in conjunction with any other antenna or transmitter.

The antennas used for this transmitter must be installed to provide a separation distance of at least 20 cm from all persons and must not be co-located or operating in conjunction with any other antenna or transmitter.

This device complies with Part 15 of the FCC Rules. Operation is subject to the following two conditions:

- (1) This device may not cause harmful interference, and
- (2) This device must accept any interference received, including interference that may cause undesired operation.