

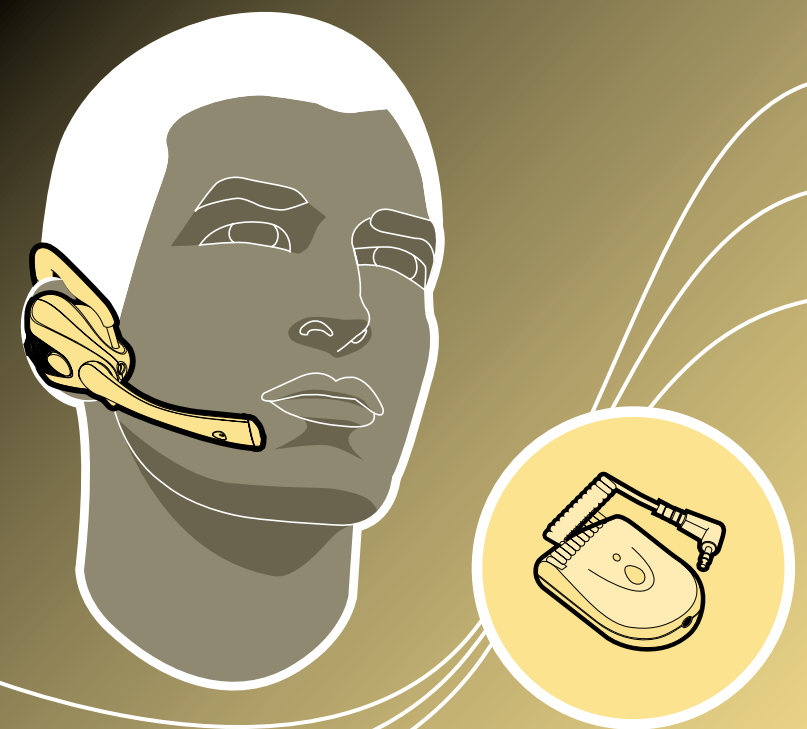
## PLANTRONICS

ABOUT

CORDLESS HEADSET SOLUTION WITH BLUETOOTH™

# M1500

QUICK START AND INFORMATION GUIDE



PLANTRONICS®

Bluetooth™

Your Plantronics M1500 cordless headset solution utilizes 2.4GHz Bluetooth technology to provide lightweight, hands-free and wire-free communication for your headset-ready mobile phone. Designed for maximum comfort and ease of use, this cordless headset solution is tailored to suit your mobile lifestyle. This guide will help you set up and use your cordless headset. Specification and supports the Headset Profile. The adapter unit also supports the Audio Gateway Profile.

For accessibility information call the Plantronics Technical Assistance Center (TAC) at (800) 544-4660 or visit [www.plantronics.com](http://www.plantronics.com).

## WARRANTY AND SERVICES

The following one-year warranty and service information applies only to product purchased and used in the U.S. and Canada. Contact your local retail dealer for warranty information in your country. During this warranty time, if the product is defective in workmanship or materials, Plantronics, at our option, will replace or exchange it for a model of equal value. Damage caused by improper care, accidents, unauthorized repair or modifications are not covered under this warranty. NEITHER PLANTRONICS NOR YOUR RETAIL DEALER OR SELLING DISTRIBUTOR HAS ANY RESPONSIBILITY FOR ANY INCIDENTAL OR CONSEQUENTIAL DAMAGES, INCLUDING WITHOUT LIMITATION, DAMAGE TO PROPERTY, COMMERCIAL LOSS OF PROFIT, OR FOR ANY EXPENSES, LOSS OF TIME, OR INCONVENIENCE. SOME STATES DO NOT ALLOW EXCLUSION OR LIMITATION OF INCIDENTAL OR CONSEQUENTIAL DAMAGE, SO THE ABOVE LIMITATION OR EXCLUSION MAY NOT APPLY TO YOU.

To obtain warranty service, please prepay shipment and return the unit to the appropriate facility listed at right:

**IN THE UNITED STATES**  
Plantronics Service Center  
345 Encinal Street  
Santa Cruz,  
CA 95060  
Tel: 800.544.4660  
(toll free)  
514.956.8363  
(toll call)  
Fax: 800.279.0162  
(toll free)

**IN CANADA**  
Plantronics Service Center  
1455 Pittfield Boulevard  
Saint-Laurent,  
Quebec H4S 1G3  
Tel: 800.540.8363  
(toll free)  
Fax: 514.956.1825  
(toll call)

Please use the original container, or pack the unit(s) in a car ton with sufficient packing material to prevent damage. Include the following information:

1. Proof of purchase indicating model number and date of purchase.
2. Bill-to address.
3. Ship-to address.
4. Number and description of units shipped.
5. Name and telephone number of person to call, should contact be necessary.
6. Reason for return and description of the problem.

**FCC NOTICE**

This device complies with Part 15 of the FCC Rules. Operation is subject to the following two conditions:

1. This device may not cause harmful interference; and
2. This device must accept any interference received, including interference that may cause undesired operation.

This equipment has been tested and found to comply with the limits for a Class B digital device, pursuant to Part 15 of the FCC Rules. These limits are designed to provide reasonable protection against harmful interference in a residential installation. This equipment generates, uses and can radiate radio frequency energy and, if not installed and used in accordance with the instructions, may cause harmful interference to radio communications. However, there is no guarantee that interference will not occur in a particular installation.

If this equipment does cause harmful interference to radio or television reception, which can be determined by turning the equipment off and on, the user is encouraged to try to correct the interference by one or more of the following measures:

- Reorient or relocate the receiving antenna.
- Increase the separation between the equipment and receiver.
- Connect the equipment into an outlet on a circuit different from that to which the receiver is connected.

**EXPOSURE TO RADIO FREQUENCY RADIATION**

The radiated output power of this internal wireless radio is far below the FCC radio frequency exposure limits. Nevertheless, the wireless radio shall be used as described in the manual.

The internal wireless radio operates within guidelines found in radio frequency safety standards and recommendations, which reflect the consensus of the scientific community.

Plantronics therefore believes the internal wireless radio is safe for use by consumers. The level of energy emitted is far less than the electromagnetic energy emitted by wireless devices such as mobile phones. However, the use of wireless radios may be restricted in some situations or environments, such as aboard airplanes. If you are unsure of restrictions, you are encouraged to ask for authorization before turning on the wireless radio.

**MAINTENANCE HINTS FOR OPTIMAL PERFORMANCE**

- Replace both the headset and adapter batteries every 12 months.
- Clean the outside of the headset with a moist cloth once a month. Dirt can decrease the efficiency of the headset.

**TROUBLESHOOTING**

What do I do if...:

**I CAN'T ANSWER CALLS FROM MY HEADSET?**

- Check to make sure that the adjustable earloop is properly positioned and resting gently on your ear.
- Adjust the height and direction of the earloop, both up and down, front and back, so pressure is not being exerted on any part of your ear, causing you discomfort.
- Gently bend the angle of the flexible earloop to conform to the shape of your ear.

**I CAN'T ANSWER CALLS FROM MY PHONE?**

- Different models of phones require different plug styles. Check the compatibility sticker on your M1500 box and make sure the unit loop, both up and down, front and back, are turned on and the batteries are charged.
- Make sure both your headset and adapter are turned on and the batteries are charged.
- Make sure the adapter unit is connected securely and is compatible with your model phone.

**CALLERS DO NOT HEAR ME.**

- Make sure that the headset's microphone is facing your mouth and positioned properly.
- Verify that the unit is not in mute mode.

**I DON'T HEAR CALLERS.**

- Turn up the volume using the volume control on your headset and on your mobile phone.
- Make sure the headset's speaker is positioned snugly over your ear.

**I NEED MORE HELP.**

- Visit [www.plantronics.com](http://www.plantronics.com) or call 1.800.544.4660 for assistance.

**HOW DO I USE THE HEADSET ON MY LEFT EAR?**

Make sure both devices are turned on. See Section 5 for more details.

Press and HOLD the POWER button on the adapter until for about 10 seconds, or until the INDICATOR light begins to flash red.

Now, PUSH IN and HOLD the headset MUTE/VOLUME dial until the INDICATOR light begins to flash. The pairing process should take about 15–30 seconds. If pairing is successful, the headset will sound a tone and both the headset and adapter INDICATOR lights will turn off.

If pairing fails, the headset INDICATOR will stop blinking after 60 seconds and return to standby mode. If pairing fails, the headset INDICATOR will stop blinking after 2 seconds and then turn off. Repeat the pairing process.

**REPLACING THE ADAPTER BATTERY**

**FIG. 6.1** – Loosen and remove the two screws on the bottom of the adapter using a small Phillips screwdriver.

**FIG. 6.2** – Lift the cover and remove the battery. Insert a new battery so the (+) and (–) symbols correspond correctly to the labels inside the battery compartment. Replace the bottom cover and insert and tighten the two screws. Be careful not to over tighten the screws.

**BLUETOOTH PAIRING**

Use these instructions only if you replace either the headset or adapter in your system. Your M1500 headset and adapter are already paired when you receive them.

See Section 7 for instructions on pairing just the headset to a Bluetooth enabled mobile phone.

**FIG. 6.3 – PAIRING THE HEADSET AND ADAPTER**

Make sure both devices are turned on. See Section 5 for more details.

Press and HOLD the POWER button on the adapter until for about 10 seconds, or until the INDICATOR light begins to flash red.

Now, PUSH IN and HOLD the headset MUTE/VOLUME dial until the INDICATOR light begins to flash. The pairing process should take about 15–30 seconds. If pairing is successful, the headset will sound a tone and both the headset and adapter INDICATOR lights will turn off.

If pairing fails, the headset INDICATOR will stop blinking after 60 seconds and return to standby mode. If pairing fails, the headset INDICATOR will stop blinking after 2 seconds and then turn off. Repeat the pairing process.

## IMPORTANT SAFETY INSTRUCTIONS

**SAFETY**

- Check local laws regarding use of a mobile phone and headset while driving.
- If you use the product while driving ensure your attention and focus remains on your responsibility of driving safely.
- CHILDREN: Never allow children to play with the headset — small parts may be a choking hazard.
- Batteries can be swallowed by children and are dangerous if swallowed. Always store and dispose of batteries where children can't reach them.
- Observe all signs that require an electrical device or RF radio product to be switched off in designated areas. These could include hospitals, blasting areas, and potentially explosive atmospheres.
- Turn off your headset prior to boarding an aircraft. Do not use your headset in an aircraft.
- Never mount or store your headset over any air bag deployment area as serious injury may result when an air bag deploys.

**BATTERY**

- **CAUTION:** To reduce the risk of fire or injury to persons, read and follow these instructions.

1. Use only the battery supplied with this product; Plantronics Part Number 35923-01.
2. Do not dispose of battery in a fire. The cells may explode. Check with local codes for possible disposal instructions.
3. Do not open or mutilate battery. Released electrolyte is corrosive and may cause damage to eyes or skin and may be toxic if swallowed.
4. Exercise care in handling the battery in order not to "short" the battery contacts with conducting materials such as rings, bracelets, or keys. The battery or conductor may overheat and cause burns.

**CHARGING**

5. Charge the battery in accordance with instructions supplied with this unit.
6. Observe proper orientation between battery and charger contacts.

**CARE**

- Never submerge your headset in water or other liquids.
- Protect your headset from spills, excessive rain, and wet locations.
- Do not use liquid cleaners or aerosol cleaners as they may damage the headset or finish of the headset.
- Use a damp cloth to clean the external portions of the headset.
- Do not stick anything inside the product as this may damage internal components.

**TURN ON BOTH DEVICES**

To turn on your headset, press and HOLD the TALK/ON-OFF button until the button lights. See Section 5 for more details.

Once both devices are turned on, place the headset and phone within an arm's length of each other.

**FIG. 7.1 – SELECT PAIRING MODE**

Following instructions in your mobile phone user guide, select discover, or pairing, mode from the Bluetooth options of your phone. On your headset, PUSH IN and HOLD the MUTE/VOLUME key until the INDICATOR light begins to blink. Your headset is now discoverable.

Check your mobile phone display and follow any instructions.

**FIG. 7.2 – ENTER YOUR PASSKEY**

If prompted by your phone, enter your four-digit passkey.

Some mobile phones and portable devices will not require a passkey.

**CONFIRM PAIRING**

If pairing is successful, the headset will sound a tone and the INDICATOR light will turn off. Check your mobile phone display to see if pairing succeeded and follow any instructions.

**NOTE** – If pairing fails, the INDICATOR light will stop flashing after 60 seconds and your headset will return to standby without sounding a tone.

Refer to your mobile phone user guide and repeat the pairing process.

**CHECK THE CONNECTION**

Test the headset to phone pairing by making a call. Refer to Section 5, FIG. 5.2 and your mobile phone user guide for more details. Customize your headset so it fits comfortably.

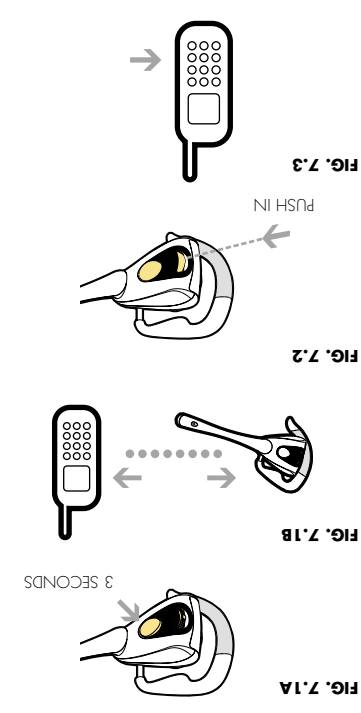
You may also use the headset alone with a compatible Bluetooth mobile device.

**FIG. 7.1A**

FIG. 7.1B

FIG. 7.2

FIG. 7.3



## PARTS AND ACCESSORIES

**M1500 BATTERY**

Replacement battery for headset or adapter, 2.4V Nickel Metal Hydride (NiMH).

**M1500 FLEXIBLE EARLOOP**

Replacement headset earloop.

**AC ADAPTER**

- 110-Volt AC Adapter. Replacement AC adapter/charger for North America.
- 220-Volt AC Adapter. Replacement AC adapter/charger for Europe.
- 220-Volt UK AC adapter. Replacement AC adapter/charger for United Kingdom.

**CAR LIGHTER ADAPTER**

Optional car lighter Y-adapter allows you to charge your M1500 headset, adapter and one other device from any 12-Volt car lighter socket.

**M1500 HEADSET**

Replacement headset for your M1500 system. Battery included.

**A500 ADAPTER**

Replacement adapter for your M1500 system. Battery included.

**PAIRING TO ANOTHER DEVICE**

Replace the bottom cover and insert and tighten the two screws. Be careful not to over tighten the screws.

**FIG. 6.1** – Loosen and remove the two screws on the bottom of the adapter using a small Phillips screwdriver.

**FIG. 6.2** – Lift the cover and remove the battery. Insert a new battery so the (+) and (–) symbols correspond correctly to the labels inside the battery compartment. Replace the bottom cover and insert and tighten the two screws. Be careful not to over tighten the screws.

**BLUETOOTH PAIRING**

Use these instructions only if you replace either the headset or adapter in your system. Your M1500 headset and adapter are already paired when you receive them.

See Section 7 for instructions on pairing just the headset to a Bluetooth enabled mobile phone.

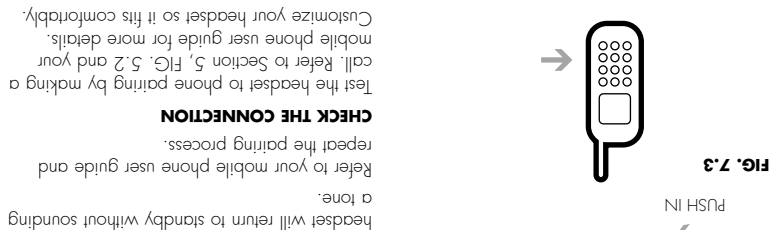
**FIG. 6.3 – PAIRING THE HEADSET AND ADAPTER**

Make sure both devices are turned on. See Section 5 for more details.

Press and HOLD the POWER button on the adapter until for about 10 seconds, or until the INDICATOR light begins to flash red.

Now, PUSH IN and HOLD the headset MUTE/VOLUME dial until the INDICATOR light begins to flash. The pairing process should take about 15–30 seconds. If pairing is successful, the headset will sound a tone and both the headset and adapter INDICATOR lights will turn off.

If pairing fails, the headset INDICATOR will stop blinking after 60 seconds and return to standby mode. If pairing fails, the headset INDICATOR will stop blinking after 2 seconds and then turn off. Repeat the pairing process.

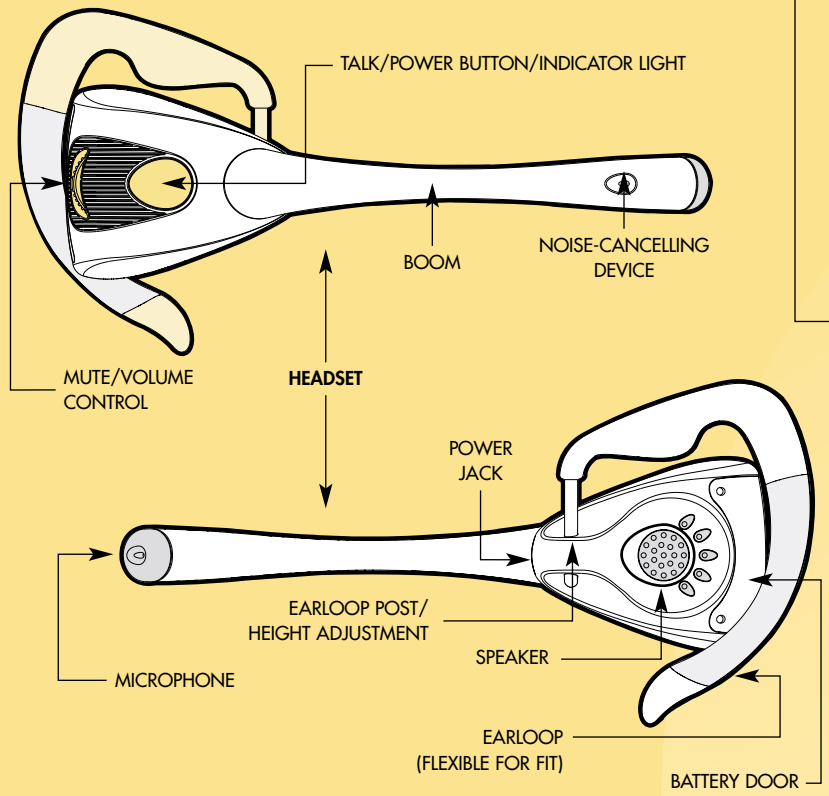


345 Encinal Street, Santa Cruz, CA 95060 (800) 544-4660 [www.plantronics.com](http://www.plantronics.com)

PLANTRONICS®

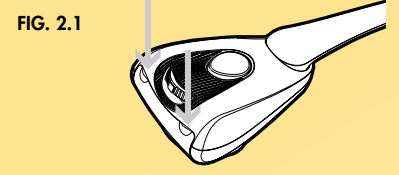
## 1 WELCOME

Welcome to the cutting edge of hands-free and wire-free technology for mobile phones. Here are the components to your Plantronics M1500 headset and adapter solution.



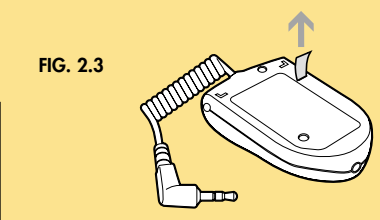
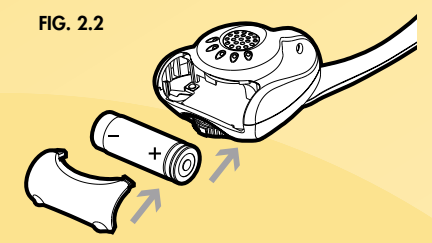
## 2 GETTING STARTED

Install, activate and charge the batteries.



**FIG. 2.1** – Open the battery compartment by pulling on the two battery door latches. Remove the door.

**FIG. 2.2** – Insert battery into compartment so the (+) and (-) symbols correspond correctly. Replace battery compartment door by inserting the small tabs nearest the speaker and then snapping the door into place.



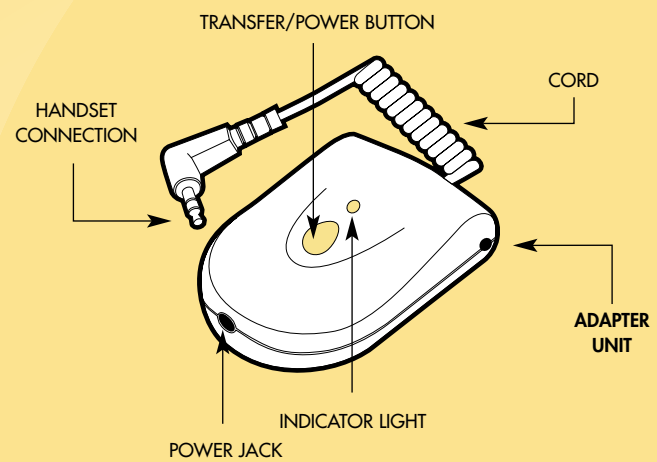
**FIG. 2.3**

**FIG. 2.3** – Locate the white vinyl strip protruding from the rear of the adapter unit. Remove the strip by pulling it directly out of the slot to activate the battery.

**FIG. 2.4** – Connect the included wall charger to AC power and then to both the headset and adapter power jacks. In a few seconds, the INDICATOR lights will begin to blink. The INDICATOR lights will stop blinking and turn off when the headset and adapter are fully charged.

The first charge takes 2 hours; subsequent charges take just 1 hour. A fully charged headset and adapter will provide approximately 3 hours of talk time and 3 days of standby. Recharging your batteries each night will ensure your headset is ready for use the next day.

⊕ The batteries used in this product must be recycled or disposed of properly. Contact your local recycling center for proper disposal instructions.

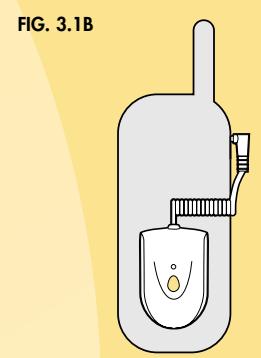
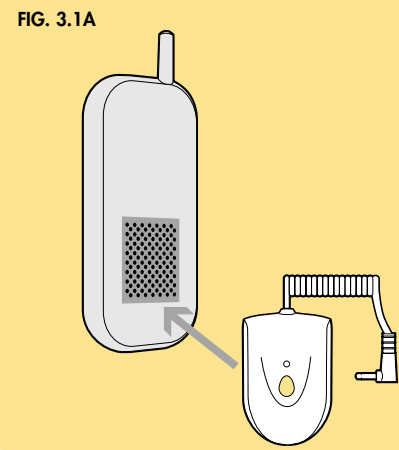


## 3 CONNECTING TO YOUR HANDSET

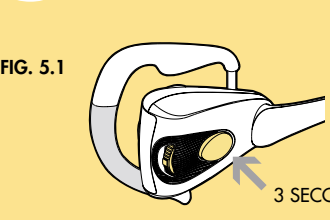
You may attach the adapter unit directly to your handset or carry it separately in the supplied belt pouch. Before attaching the unit to your handset, place a few calls (see Section 5) and determine a position that provides the best audio performance.

### FIG. 3.1 – ATTACHING DIRECTLY TO HANDSET

- Select a location on your handset to attach the adapter unit. Make sure the attachment point is flat and large enough to fit the supplied tape/Velcro patches.
- Check that the adapter unit cord will connect to the headset-jack on your handset without interfering with normal usage.
- **NOTE** – Make sure that when the adapter unit is fixed to your handset, other accessories you use (belt clips, car kits or charging stations) can connect and work properly.
- Peel the backing off one side of the tape/Velcro patch and attach it squarely to the back of the adapter unit.
- Peel off the other (exposed) side of the tape/Velcro patch and secure it to your handset.
- Now attach the adapter unit to your handset and connect the cord to the headset-jack. See your mobile phone user guide for instructions for connecting a headset.



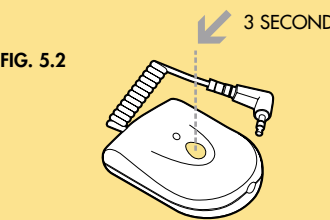
## 5 USING YOUR HEADSET



**FIG. 5.1**

### FIG. 5.1 – TURNING THE HEADSET ON AND OFF

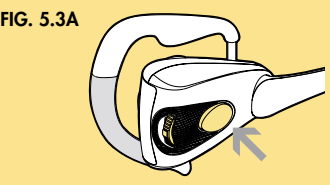
- To turn your headset on, press and HOLD the blue TALK button until the button lights. The INDICATOR will light continuously for a few seconds and then turn off.
- To turn your headset off, press and HOLD the TALK button for about 3 seconds or until you hear a tone. The INDICATOR will flash twice and the headset will turn off.
- To check if your headset is turned on or off, hold the unit to your ear and ROTATE the MUTE/VOLUME dial. If you hear a tone, your headset is turned on.



**FIG. 5.2**

### FIG. 5.2 – TURNING THE ADAPTER ON AND OFF

- To turn your adapter on, press and HOLD the blue POWER button until the INDICATOR lights. The INDICATOR will flash green while the unit is on.
- To turn your adapter off, press and HOLD the POWER button for about 3 seconds, or until the indicator turns red. The INDICATOR will flash twice and the adapter will turn off.



**FIG. 5.3A**

### FIG. 5.3 – HANDLING CALLS

- Make sure both your headset and adapter are turned on and the adapter is connected to your phone.

### MAKING A CALL

- Press the TALK button on your headset to establish a connection between the headset and adapter. You will hear a tone and the INDICATOR lights on both the adapter and headset will begin to flash red.
- Dial using your mobile phone keypad and press the SEND key to place a call. You will hear the call progress in your headset.
- When your call is complete, press the TALK button on your headset to disconnect the adapter. The INDICATOR light on the adapter will return to flashing green.

**NOTE**—To prevent shortened battery life, make sure the adapter INDICATOR light is flashing green between calls. If the adapter INDICATOR light is flashing red and you are not using your headset, press the TALK button on the headset to disconnect the adapter.

### ACCEPTING A CALL

- As soon as your handset rings, press the TALK button on your headset to establish a connection between the headset and adapter. You will hear a tone and the INDICATOR lights on both the adapter and headset will begin to flash red.
- Answer the call using your handset SEND key.
- When your call is complete, press the TALK button on your headset to disconnect the adapter. The INDICATOR light on the adapter will return to flashing green.

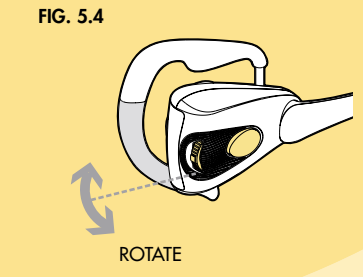
### FIG. 5.4 – ADJUSTING THE VOLUME

- To increase volume, ROTATE the MUTE/VOLUME dial up and release (for headset usage on right ear).
- To lower volume, ROTATE the MUTE/VOLUME dial down and release (for headset usage on right ear).
- Also adjust the volume on your handset.

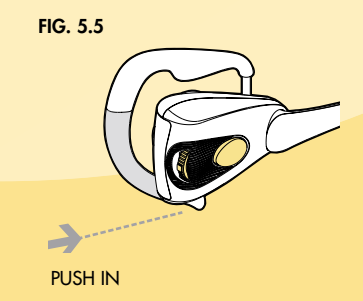
**NOTE**—If using the headset on your left ear, reverse the instructions, rotating down to raise volume, and up to lower it.

### FIG. 5.5 – MUTE FUNCTION

- To mute the microphone while on a call, PUSH IN on the MUTE/VOLUME dial. A tone, followed 2 seconds later by a reminder tone, indicates mute function.
- To disable the mute, PUSH IN on the MUTE/VOLUME dial again. A beep indicates Mute function is off.

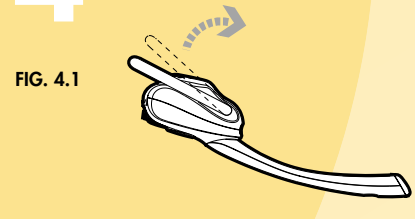


**FIG. 5.4**

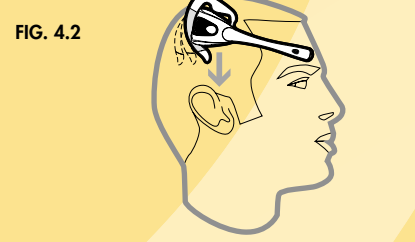


**FIG. 5.5**

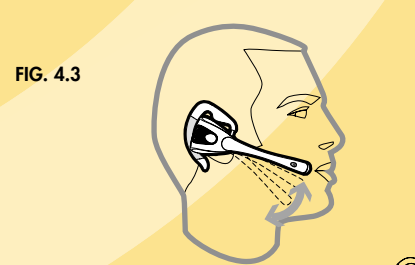
## 4 GETTING THE PERFECT FIT



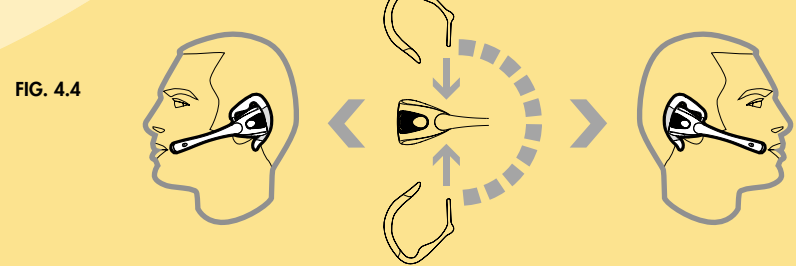
**FIG. 4.1**



**FIG. 4.2**



**FIG. 4.3**



**FIG. 4.4**

Customize your headset so that it fits comfortably.

### FIG. 4.1 – Rotate the earloop outward.

### FIG. 4.2 – Position the headset over your right ear so that the earloop slides behind your ear. Bend the flexible earloop to achieve a snug, comfortable fit.

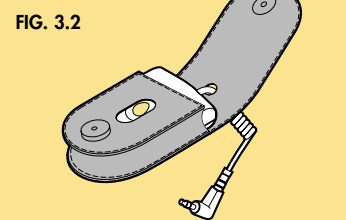
### FIG. 4.3 – Adjust the microphone BOOM so it is aligns with your mouth.

### FIG. 4.4 – For left ear usage, simply remove the earloop from the headset, flip the headset over and reinsert the earloop on the opposite side. After completing this step, follow the fit instructions above — except using your left ear.

**NOTE** – If the speaker sounds soft or feels uncomfortable, slide the headset up or down along the earloop post so that it is centered on your ear when fitted.

### FIG. 3.2 – USING THE BELT POUCH

- Open the pouch and slide in the adapter unit with the power jack facing down.
- With the pouch open, slip the adapter cord through the rectangular slot in the top flap and close the pouch.
- Slide the pouch onto your belt and attach the adapter cord to your handset.
- When using the belt pouch, remember to unplug the adapter before you answer or make a call using your handset.



**FIG. 3.2**

