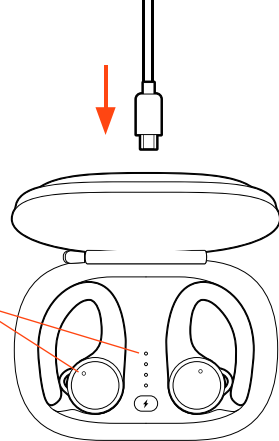
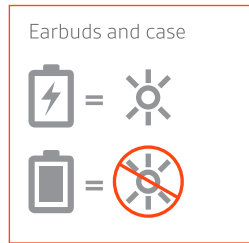
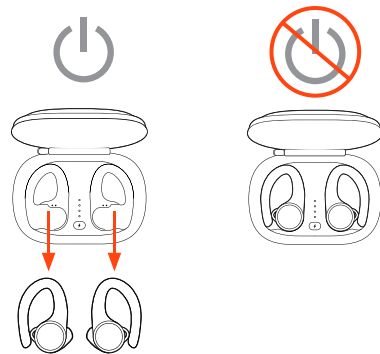


Charge
Rechargez / 充电 / 充電



Auto power on/off earbuds
Mise sous tension et hors tension automatique des écouteurs-boutons /
可自动开机/关机的耳塞式耳机 / 自動開關耳塞式耳機的電源



Use BackBeat app to personalize your earbuds

Utilisez l'application BackBeat pour personnaliser vos écouteurs-boutons / 使用 BackBeat 应用程序个性化设置您的耳塞式耳机 / 使用 BackBeat 應用程式打造個人化的耳塞式耳機



BackBeat

- Select language
- Set your favorite playlist, start a timer and more
- Find MyHeadset
- View user guide

 plantronics.com/setup/backbeat-fit-3100
View complete user guide

© 2018 Plantronics, Inc. Bluetooth is a registered trademark of Bluetooth SIG, Inc. and any use by Plantronics, Inc. is under license. Apple and Siri are trademarks of Apple Inc., registered in the US and other countries. All other trademarks are the property of their respective owners. Patents pending.
211698-02 04.18 Model ID: BF3100S



Recyclable where facilities exist

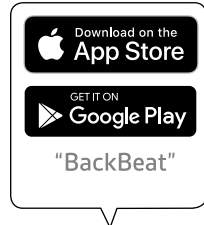
QUICK START

BackBeat FIT 3100 Series

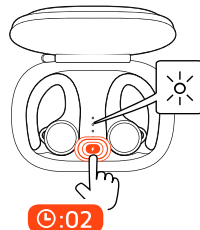
plantronics®

First-time pair / Premier appairage / 初次配对 / 首次配對

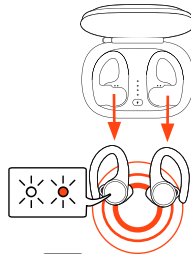
1 Download



2 Power on case



3 Pair



PLT BBFIT
3100 Series

Для получения дополнительной информации посетите веб-сайт plantronics.com.

sk Symbol prečiarknutého odpadového kontajnera na kolieskach označuje, že odpadové elektrické a elektronické zariadenia a batérie sa nesmú likvidovať spolu s iným netriedeným komunálnym odpadom, ale musia sa zhrádzať samostatne. Podrobnejšie informácie nájdete na webovej stránke plantronics.com.

sl Simbol prečrtanega smetnjaka pomeni, da odpadne električne in elektronske opreme ter baterij ni dovoljeno odlagati kot nerazvrščene komunalne odpadke, ampak jih je treba zbirati ločeno. Za podrobnejše informacije obiščite spletno stran plantronics.com.

sv Den överkorsade soptunnan innebär att elektriskt och elektroniskt avfall och batterier inte får kasseras med osorterat hushållsavfall, utan ska samlas in separat enligt lokala lagar och förordningar. Mer detaljerad information finns på plantronics.com.

tr Üzerine çarpi işaretli çizilmiş bir çöp konteyneri simgesi, elektrikli ve elektronik ekipman atıklarının ve pillerin ev çöpleriyle birlikte atılmaması ve ayrı olarak toplan-ması gerektiğini belirtir. Daha ayrıntılı bilgi için plantronics.com adresini ziyaret edin.

Korea



R-CRI-BF3100S

해당 무선설비는 전파혼신 가능성이 있으므로 인명안전과 관련된 서비스는 할 수 없습니다

Mexico



Requisitos de la FCC (sección 15) y por el IFT

Su uso está sujeto a las dos condiciones siguientes:

1. Este dispositivo no puede causar interferencias nocivas.
2. Este dispositivo debe aceptar todas las interferencias recibidas, incluidas aquellas que puedan causar un funcionamiento no deseado.

Philippines

Russia



Singapore

Complies with
IMDA Standards
DA101760

Taiwan

根據NCC低功率管理辦法規定：

第十二條 經型式認證合格之低功率射頻電機，非經許可，公司、商號或使用者均不得擅自變更頻率、加大功率或變更原設計之特性及功能。
第十四條 低功率射頻電機之使用不得影響飛航安全及干擾合法通信；經發現有干擾現象時，應立即停用，並改善至無干擾時方得繼續使用。前項合法通信，指依電信規定作業之無線電通信。低功率射頻電機須忍受合法通信或工業、科學及醫療用電波輻射性電機設備之干擾。

Thailand

“เครื่องโทรคมนาคมและอุปกรณ์นี้ มีความสอดคล้องตามข้อกำหนดของ กทท.”

UAE

plantronics®

Regulatory Compliance Information

United States



Declaration of Conformity

We Plantronics, 345 Encinal Street Santa Cruz, California, 95060 USA (800) 544-4660 declare under our sole responsibility that the BackBeat FIT 3100 Series, BF3100S, complies with Part 15 of the FCC Rules.

This equipment has been tested and found to comply with the limits for a Class B digital device, pursuant to Part 15 of the FCC Rules. These limits are designed to provide reasonable protection against harmful interference in a residential installation. This equipment generates, uses and can radiate radio frequency energy and, if not installed and used in accordance with the instructions, may cause harmful interference to radio communications. However, there is no guarantee that interference will not occur in a particular installation.

FCC Regulatory Information

This device complies with part 15 of the FCC Rules. Operation is subject to the following two conditions: (1) This device may not cause harmful interference, and (2) this device must accept any interference received, including interference that may cause undesired operation. Changes or modifications not expressly approved by the party responsible for compliance could void the user's authority to operate the equipment.

This equipment complies with FCC radiation exposure limits set forth for an uncontrolled environment.

If this equipment does cause harmful interference to radio or television reception, which can be determined by turning the equipment off and on, the user is encouraged to try to correct the interference by one or more of the following measures:

- Reorient or relocate the receiving antenna.
- Increase the separation between the equipment and receiver.
- Connect the equipment into an outlet on a circuit different from that to which the receiver is connected.
- Consult the dealer or an experienced radio/TV technician for help.

Australia/New Zealand



Canada

This device complies with Industry Canada licence-exempt RSS standard(s). Operation is subject to the following two conditions: (1) this device may not cause interference, and (2) this device must accept any interference, including interference that may cause undesired operation of the device. Le présent appareil est conforme aux CNR d'Industrie Canada applicables aux appareils radio exempts de licence. L'exploitation est autorisée aux deux conditions suivantes : (1) l'appareil ne doit pas produire de brouillage, et (2) l'utilisateur de l'appareil doit accepter tout brouillage radioélectrique subi, même si le brouillage est susceptible d'en compromettre le fonctionnement.

This equipment complies with IC radiation exposure limits set forth for an uncontrolled environment. Cet équipement est conforme aux limites d'exposition de radiation IC énoncés pour un environnement non contrôlé.

Europe



en A crossed-out wheeled bin symbol denotes that waste electrical and electronic equipment and batteries must not be disposed of as unsorted municipal waste, but collected separately. For more detailed information, please go to plantronics.com.

bg Задрасканият контейнер на колела означава, че непотребното електрическо и електронно оборудване и батерии не трябва да се изхвърля с останалата част от неразделените битови отпадъци, а трябва да се събира отделно. За повече информация посетете plantronics.com.

cs Symbol přeškrtnutého kontejneru na odpady připomíná, že odpad z elektrických a elektronických zařízení a baterie se nesmí vyhazovat spolu s netříděným odpadem z domácnosti, ale je nutné je likvidovat samostatně. Podrobnější informace získáte na našich webových stránkách plantronics.com.

de Das durchgestrichene Mülltonnen-Symbol bedeutet, dass elektrische und elektronische Geräte sowie Batterien nicht im Hausmüll entsorgt werden dürfen. Sie müssen speziellen Sammelstellen zugeführt werden. Weitere Informationen erhalten Sie auf plantronics.com.

el Το σύμβολο του τροχήλατου κάδου απορριμμάτων με ένα μεγάλο X μπροστά υποδηλώνει ότι ο χρησιμοποιούμενος ηλεκτρικός και ηλεκτρονικός εξοπλισμός και οι μπαταρίες δεν πρέπει να απορρίπτονται ως μικτά δημοτικά απόβλητα, αλλά αντίθετα θα πρέπει να συλλέγονται χωριστά. Για περισσότερες λεπτομέρειες, επισκεφθείτε τη διεύθυνση plantronics.com.

es El contenedor de basura tachado indica que los residuos de aparatos eléctricos y electrónicos no se deben desechar con los desechos municipales sin clasificar, sino que deben recogerse por separado. Para obtener más información, visite plantronics.com.

fi Roska-astian päällä oleva rasti tarkoittaa, että sähkö- ja elektroniikkaromua tai akkuja ei saa hävittää kotitalousjätteen mukana, vaan ne on toimitettava erilliseen keräyspisteeseen. Lisätietoja on osoitteessa plantronics.com.

fr Le symbole représentant une poubelle à roulettes barrée signifie que les déchets d'équipements électriques et électroniques et les batteries ne peuvent pas être mis au rebut avec le reste des déchets ménagers, mais doivent être collectés séparément. Pour de plus amples informations, consultez notre site Web à l'adresse : plantronics.com.

hr Prekrižena kanta za smeće znači da se otpadna električna i elektronička oprema i baterije ne smiju odlagati kao komunalni otpad, nego se trebaju odložiti zasebno. Detaljnije informacije potražite na stranici plantronics.com.

hu Az áthúzott szemetes jelzi, hogy az elektromos és elektronikus berendezések és az akkumulátorok nem kezelhetők válogatás nélkül,

normál lakossági hulladékként, hanem külön gyűjtendő. További információért keresse fel weboldalunkat: plantronics.com.

it L'etichetta con il simbolo di divieto su un bidone dell'immundizia, indica che le apparecchiature elettriche ed elettroniche e le batterie non devono essere smaltite con i normali rifiuti, ma raccolti separatamente. Per ulteriori informazioni, visitare il sito all'indirizzo plantronics.com.

lt Perbraukto atliekų konteinerio su ratukais simbolis reiškia, kad elektros ar elektroninės įrangos bei maitinimo elementų negalima išmesti su nerūšiuotomis buitinėmis atliekomis, jas reikia surinkti atskirai. Išsamesnės informacijos ieškokite interneto svetainėje plantronics.com.

lv Pārsvitrotas atkritumu tvertnes simbols nozīmē, ka lietotas elektriskās un elektroniskās iekārtas, kā arī to akumulatorus nedrīkst utilizēt kopā ar nešķirotiem sadzīves atkritumiem; iekārtas un akumulatori ir jāsavāc atsevišķi. Papildinformāciju skatiet tīmekļa vietnē: plantronics.com.

pl Przekreślony pojemnik na odpady oznacza, że zużytego sprzętu elektrycznego i elektronicznego oraz baterii nie należy wyrzucać wraz z normalnymi, nieposegregowanymi odpadami gospodarstwa domowego, ale oddzielnie. Więcej informacji można znaleźć na stronie internetowej plantronics.com.

pt O símbolo do caixote do lixo com uma cruz sobreposta indica que o equipamento eléctrico e electrónico e baterias não deverão ser eliminados como resíduos municipais indiferenciados mas sim em separado. Para obter mais informações, visite plantronics.com.

ro Simbolul pubelei dublu barată denotă faptul că echipamentele electrice și electronice și bateriile nu trebuie aruncate ca gunoi menajer nesortat, ci trebuie colectate separat. Pentru informații mai detaliate, vizitați plantronics.com.

ru Значок зачеркнутого мусорного бака указывает на то, что использованное электрическое и электронное оборудование, а также элементы питания не должны утилизироваться вместе с неотсортированными бытовыми отходами; утилизация данного вида отходов должна производиться отдельно от других отходов.

© 2018 Plantronics, Inc. All trademarks are the property of their respective owners.



Recyclable where facilities exist