



PLANTRONICS
SOUND INNOVATION™

→ ● ● ● → USER GUIDE_
GUÍA DEL USUARIO_

DISCOVERY™ 645

BLUETOOTH® HEADSET WITH DSP



 **Bluetooth®**
V2.0

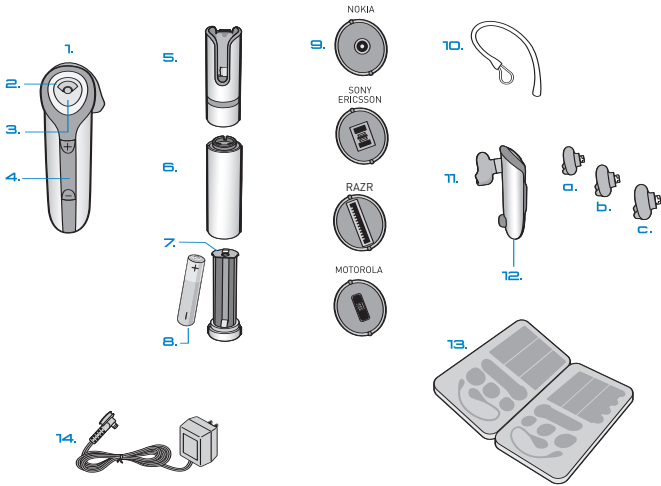
TABLE OF CONTENTS

Package Contents and Features/[Spanish]	1
Connecting the Components/	2
Charging/	3
Powering/	4
Pairing/	5
Adjusting Fit/	6
Using Your Headset/	7
Indicator Lights/	9
Accessories/	10
Troubleshooting/	11
Technical Assistance/	12
Warranty/	12
Regulatory Notices/	13

Register Your Product Online

Visit www.plantronics.com/productregistration to register your product online so we can provide you with the best possible service and technical support.

PACKAGE CONTENTS & FEATURES



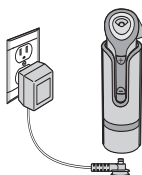
1. Headset
2. Indicator Light
3. Call Control Button (On/Off)
4. Volume/Mute Button
5. Headset Carrying Pocket
6. Battery Charger
7. Battery Holder
8. Battery (AAA)*
9. Charging Adapters**
10. Optional Ear Stabilizer
11. Soft Gel Ear Tips
 - a. Small
 - b. Medium
 - c. Large
12. Microphone
13. Storage Case
14. AC Power Adapter

CHARGING CAUTIONS

- * Only replace with a non-rechargeable AAA battery.
- ** Use only chargers approved and provided by the cell phone manufacturer to charge with the charging adapters provided. Maximum charger output is 15V 800mA.


CHARGING

A



Before using, you must first charge your headset.

1 hour = minimum charge 

3 hours = full charge 

There are 3 options to charge headset:

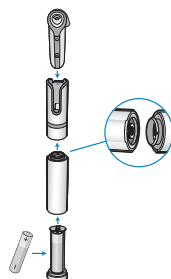
- Using included AC power adapter
- Using a AAA battery
- Using the AC adapter from your mobile phone

Option A: Using the included AC power adapter

The indicator light glows red while charging and turns off when fully charged.

1. Plug the AC power adapter into the base of the headset carrying pocket and connect it to your power source.
2. Insert the headset into the headset carrying pocket.

B

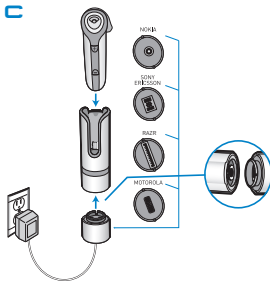


Option B: Using a AAA battery

One battery will operate the headset for up to 9 hours of talk time.

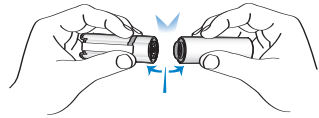
1. Twist the bottom of the battery charger counter-clockwise and release the battery holder.
2. Insert the battery into the battery holder.
3. Slide the battery holder back into the battery charger and turn clockwise.
4. Snap battery charger to headset carrying pocket. Ensure that the indent on the attachment lines up with the shirt clip on the headset carrying pocket.
5. Insert the headset into the headset carrying pocket.

CHARGING



Option C: Using the AC adapter from your mobile phone

1. Select the appropriate charging adapter for your phone and connect the charging adapter to the base of the headset carrying pocket. Ensure that the indent on the attachment lines up with the shirt clip on the headset carrying pocket.
2. Plug the AC power adapter (A) for your phone into the charging adapter and connect the AC power adapter to your power source.
3. Insert the headset into the headset carrying pocket.

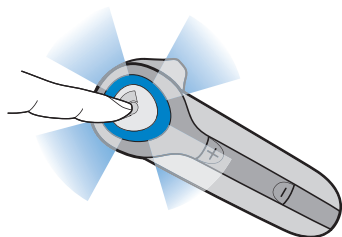


DISCONNECTING COMPONENTS

To separate the components, grasp both the headset carrying pocket and attachment with the shirt clip facing you. Bend the outsides back and the components will snap apart.

CAUTION Do not twist the components apart.

POWERING



1. Turn on the headset by pressing and holding the call control button until the indicator light glows blue. If you are wearing the headset, you will hear a beep when the power turns on. The indicator light will flash blue every 6 seconds when the power is on.

NOTE When the headset is on, the indicator light will indicate the charge level of the headset.



2. Turn off the headset by pressing the call control button for 6-8 seconds until the indicator light glows red or until you hear the beep. The indicator light remains unlit when the power is off.

CHARGING INDICATOR LIGHTS

3 red flashes = greater than 2/3 battery charge
[spanish]



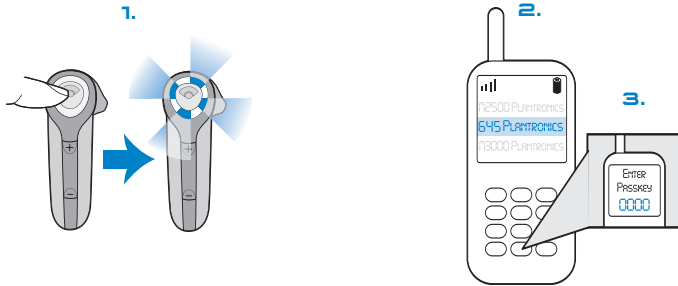
2 red flashes = 1/3 to 2/3 battery charge



1 red flash = less than 1/3 battery charge



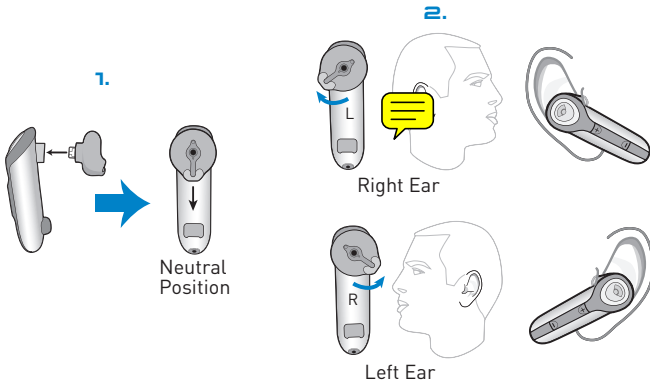
PAIRING



Before using your headset for the first time, you must pair it with your Bluetooth phone or device. Be sure the headset is fully charged. For set up and pairing instructions with Bluetooth devices other than mobile phones, please consult your Bluetooth device user guide.

1. Begin with headset turned off. Press and hold down the call control button until the headset status indicator briefly glows blue, then flashes red and blue. The headset is now in pairing mode for the next 30 seconds.
2. While the headset is flashing red and blue, use the phone menu to search for Bluetooth devices and select "645 Plantronics."
3. When prompted for passkey enter 0000. Headset will flash blue when paired successfully.

ADJUSTING FIT



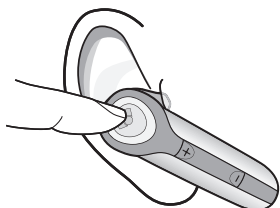
The Discovery 645 headset comes with 3 soft gel ear tips and an optional ear stabilizer. The medium-sized ear tip is installed for wearing on the right ear.

- Twist to the L for left ear wearing and R for right ear wearing.
- Place the headset into your ear with the elongated side of the ear tip pointing up and forward. Point headset toward your mouth.

If the fit is not comfortable, either too tight or too loose, remove the ear tip from the headset by turning the tip to the neutral position and pulling the ear tip away from the headset. Select the ear tip size that fits most comfortably in your ear.

1. Hold the ear tip with the elongated edge pointing down and push the ear tip post into the opening on the headset. This is the neutral position.
2. Twist the ear tip to the L for left ear wearing and R for right ear wearing.

USING YOUR HEADSET



ANSWERING/ ENDING/MAKING CALLS

To answer or end a call, briefly press the call control button.

To make a call, enter number on your phone, hit send, and the call is automatically transferred to headset; no need to push call control button.

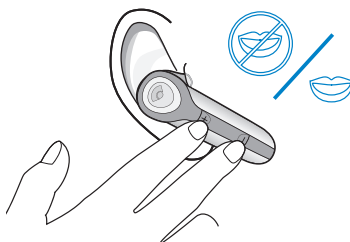
NOTE If the headset is in the headset carrying pocket when a call is received, the carrying pocket will vibrate. Removing the headset from the pocket will answer the call. Returning the headset to the headset carrying pocket will end the call.



ADJUSTING VOLUME

To increase listening volume, press the upper end (+) of the volume/mute button.

To decrease listening volume, press the lower end (-).



MUTE A CALL

To turn the mute on while on a call, press both sides of the volume/mute button simultaneously until you hear a beep.

To turn the mute off, press both buttons again.

USING YOUR HEADSET

MOVING OUT OF RANGE

As the headset moves to more than 33' away from the Bluetooth device:

- Audio quality will degrade
- A beep will be heard in the headset when the connection between headset and BT device
- When out of range, only the power off function will operate

If any of the above occur, move closer to your Bluetooth device.

LAST NUMBER REDIAL

To activate last number redial, double click the call control button. You will hear a high tone for each key press.

USING VOICE DIALING

With the headset on, one long press on the call control button will activate the voice dialing.

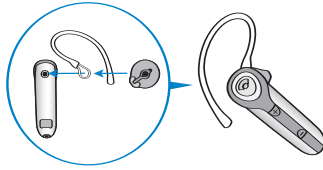
NOTE To use voice activated dialing, the voice dialing feature must be enabled on your phone. See your Bluetooth phone manual for instructions.

INDICATOR LIGHTS

Headset Status	Headset Indicator Light
Powering on [Spanish]	Blue appears and flashes every 6 seconds
Power on [Spanish]	Blue flashes every 6 seconds
Powering off [Spanish]	Red appears and goes off
Power off [Spanish]	—
Charging battery [Spanish]	Red is on
Battery fully charged [Spanish]	Red goes off
Pairing mode [Spanish]	Blue/red flashes for 30 seconds
Missed call [Spanish]	Blue/red flashes infrequently. Press any button to cancel
Ring [Spanish]	Blue/red flashes rapidly
On Line Indicator (OLI) [Spanish]	Blue flashes every 10 seconds
Low battery [Spanish]	Red flashes

ACCESSORIES

USING THE INCLUDED EAR STABILIZER



The ear tip stabilizer may be attached to the headset to improve stability.

1. Remove the ear tip from the headset by turning the ear tip to the neutral position and pulling the ear tip away from the headset.
2. Attach the stabilizer between the ear tip and the headset.
3. Replace the ear tip.

AVAILABLE FOR PURCHASE



69520-01 AC/DC
Car Lighter
Adapter Charger



69519-01 USB
Headset Charger

To order, please contact your Plantronics supplier or go to www.plantronics.com

TROUBLESHOOTING

PROBLEM

SOLUTION

My headset does not work with my phone.

Headset was not in pairing mode when mobile phone menu selections were made. See page 5 "Bluetooth Pairing".

Incorrect menu selections were made on your mobile phone. See page 5 "Bluetooth Pairing".

I did not enter my passkey.

Your phone did not locate the headset. Repeat the pairing process on page 5.

Incorrect menu selections were made on your mobile phone. Repeat the pairing process on page 5.

Callers cannot hear me.

Mute is turned on. Press both sides of the volume/mute button simultaneously.

I cannot hear caller/dialling tone.

The headset is not turned on. Press the call control button for 2 seconds until you hear a beep or see the indicator light glow blue to turn headset on.

Your headset is out of range. Move the headset closer to the phone or Bluetooth device.

Your headset battery is drained. Charge your battery using the AC power adapter supplied, the AC adapter from your mobile phone, or an AAA battery.

The listening volume is too low. Press the top part of the volume/mute button to increase the sound heard in the headset.

TECHNICAL ASSISTANCE

Visit our Web site at www.plantronics.com/support for technical support including frequently asked questions, compatibility and accessibility information. The Plantronics Technical Assistance Center (TAC) is also ready to assist you on 866-363-BLUE (2583).

WARRANTY

Limited Warranty

- This warranty covers defects in materials and workmanship of products manufactured, sold or certified by Plantronics which were purchased and used in the United States.
- The warranty lasts for one year from the date of purchase of the products.
- This warranty extends to you only if you are the end user with the original purchase receipt.
- We will at our option, repair or replace the products that do not conform to the warranty. We may use functionally equivalent reconditioned/refurbished/remanufactured/pre-owned or new products or parts.
- To obtain service in the U.S., contact Plantronics at (866) 363-BLUE (2583).
- THIS IS PLANTRONICS' COMPLETE WARRANTY FOR THE PRODUCTS.
- This warranty gives you specific legal rights, and you may also have other rights that vary from state to state. Please contact your dealer or our service center for the full details of our limited warranty, including items not covered by this limited warranty.

REGULATORY NOTICES

FCC Requirements Part 15

This device complies with Part 15 of the FCC Rules. Operation is subject to the following two conditions:

1. This device may not cause harmful interference, and
2. This device must accept any interference received, including interference that may cause undesired operation.

This equipment has been tested and found to comply with the limits for a Class B digital device, pursuant to Part 15 of the FCC Rules. These limits are designed to provide reasonable protection against harmful interference in a residential installation. This equipment generates, uses, and can radiate radio frequency energy and, if not installed and used in accordance with the instructions, may cause harmful interference to radio communications.

However, there is no guarantee that interference will not occur in a particular installation. If this equipment does cause harmful interference to radio or television reception which can be determined by turning the radio or television off and on, the user is encouraged to try to correct interference by one or more of the following measures:

1. Reorient or relocate the receiving antenna.
2. Increase the separation between the equipment and receiver.
3. Connect the equipment into an outlet on another circuit.
4. Consult the dealer or an experienced radio/TV technician for help.


Exposure to Radio Frequency Radiation

This device and its antenna must not be co-located or operated in conjunction with any other antenna or transmitter. To comply with FCC RF exposure requirements, only use supplied antenna. Any unauthorized modification to the antenna or device could void the user's authority to operate this device.



PLANTRONICS®

SOUND INNOVATION™

Plantronics Inc. ncinal Street
Santa Cruz, CA 95060 USA
Tel: (800) 544-4660

www.plantronics.com

© 2005 Plantronics, Inc. All rights reserved. Plantronics, the logo design, Plantronics Discovery and Sound Innovation are trademarks or registered trademarks of Plantronics, Inc. The Bluetooth name and the Bluetooth trademarks are owned by Bluetooth SIG, Inc. and are used by Plantronics, Inc. under license. All other trademarks are the property of their respective owners. Patents U.S. 5,210,791; Patents Pending.

Printed in U.S.A. 72136-01 (11/05)