




Plantronics Discovery[®] 975
User Guide

Welcome

Thank you for purchasing the Plantronics Discovery® 975 earpiece. This guide contains instructions for setting up and using your new earpiece.

 Before using this product, please refer to the For Your Safety guide for important product safety and charging information.

Getting Assistance

The Plantronics Technical Assistance Center is ready to assist you. You can find answers to frequently asked questions, ask a question using e-mail, receive service over the Internet, or speak directly with a representative. Visit www.plantronics.com/support or call 1-866-363-BLUE (2583).

NOTE If you are considering returning this earpiece, please contact the Technical Assistance Center first.

Registering Your Product

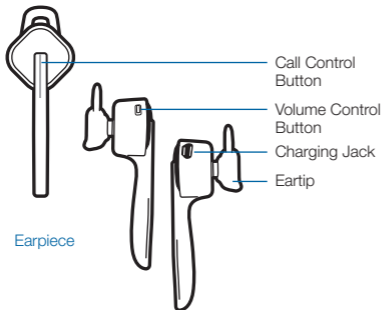
Visit www.plantronics.com/productregistration to register your product online so we can provide you with the best service and technical support.

NOTE For pairing your Earpiece, your PIN code, or “Passkey,” is 0000.

Contents

Package Contents, Features and Accessories	iv
Charging Your Earpiece.....	1
Using the AC or USB charger.....	1
Using the Charging Case	2
Checking the Battery Level	3
Automatic Battery Status Alerts.....	4
Recharging the Charging Case	5
Pairing Your Earpiece	6
Plantronics QuickPair™ Technology	6
How to Pair Your Phone With Your Earpiece for the First Time	7
Adjusting the Fit	8
How to Install a Different Gel Eartip	8
Earpiece Controls.....	9
Hands-Free Features.....	10
Range	11
Indicator Lights and Tones	11
Troubleshooting.....	13
Using More Than One Bluetooth Phone	15
How to Turn the Multipoint Feature On and Off	15
How to Initiate a Call	15
How to Answer a Call While Talking on the Other Phone	15
Product Specifications	16
Limited Warranty	17

Package Contents and Features



Earpiece



Stabilizing Eartips
(small, medium, and large)



Charging Case



AC Charger
100-240V

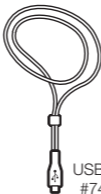


USB Charging Cable

Product Name & Number Accessories*



Vehicle Power Charger
#xxxxx-xx



USB Lanyard
#74948-01



Clothing Clip
#xxxxx-xx

* Not included. To order, please contact your Plantronics supplier
iv or go to www.plantronics.com

Charging Your Earpiece

Your new earpiece performs best when fully charged. While your earpiece is charging, the indicator light slowly flashes red. When your earpiece is fully charged, the indicator light turns off. This applies to all charging options.

Never charge the battery where the temperature may fall below 0°C (32°F) or rise above 40°C (104°F) – for example, in an unattended motor vehicle. Do not use your earpiece while it is connected to the charger.

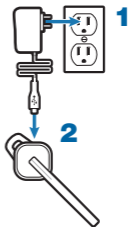
CHARGING TIME

1.5 hours Full charge using
AC or USB

30 minutes... Minimum charge
before first use

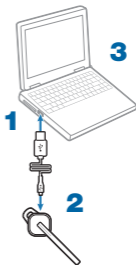
Option A: Using the AC Charger

- 1** Plug the AC charger into a power outlet.
- 2** Connect the AC charger to the charging jack on the earpiece.



Option B: Using the USB Charger

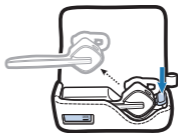
- 1** Connect USB charger to the USB port on a computer or laptop.
- 2** Connect the USB charger to the charging jack on the earpiece.
- 3** Turn the computer or laptop on.



Charging Your Earpiece



Insert



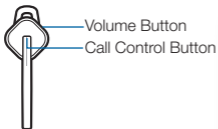
Eject

Option C: Using the Charging Case




Open the cover of the case. Align the charging jack on the earpiece with the micro USB connection in the case. Gently push the earpiece onto the micro USB connection until you feel it click into place.

IMPORTANT Incorrect removal of the earpiece from the case will damage the micro USB port in the case. Gently press the ejection button with your thumb to release the earpiece.

Charging Your Earpiece

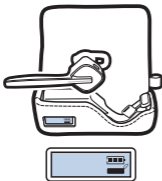


CHARGE INDICATOR LIGHTS




Red Flashes	Battery Level
*	 More than 2/3 full
* *	 1/3 to 2/3 full
* * *	 Less than 1/3 full

Checking the Battery Level of Your Earpiece

Option A: With the earpiece on, simultaneously press and hold the call control button and the volume button for about 2 seconds. The indicator light flashes red to show the charge level.



BATTERY LEVEL ICON

Bars	Battery Level
3	 Full battery
2	 1/3 to 2/3 full
1	 Less than 1/3 full

Option B: The LCD display on the charging case will indicate battery level of the earpiece when earpiece is inserted into case. The battery icon (above the earpiece) flashes to indicate battery level.

Charging Your Earpiece

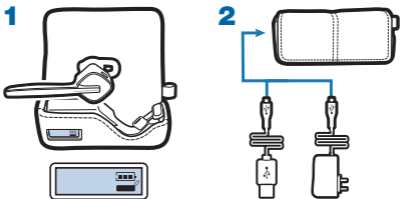
Automatic Battery Status Alerts

When the battery charge is very low, a tone and voice prompt in English will automatically occur.

LOW BATTERY WARNINGS

Battery Level	Tone	Voice Prompt
30 minutes of talk time remaining (this alert only occurs during an active call)	Double high tone every 15 minutes	"Battery Low" repeats every 30 minutes
10 minutes of talk time remaining	Triple high tone every 30 seconds	"Recharge Battery" repeats every 3 minutes

Recharging Your Charging Case



Recharging the Battery Inside the Case

The charging case provides **two** full **charges** to your earpiece before the battery within the case requires charging.

- 1 To check the battery status of the charging case, refer to the LCD display on the case.**

The battery status may change if you insert the earpiece because the battery will transfer power to the earpiece.

- 2 Plug either the AC charger or the USB charger to power source before connecting to the charging jack on the side of the case.**

While the case is charging, the LCD battery icon (above the case image) flashes to indicate charge level.

NOTE If you disconnect the power source from the case after 10 minutes of charging you must then wait at least 60 minutes before reconnecting a power source to resume the charging cycle.

CHARGING TIME

3.5 hours.Full charge
using USB

1.5 hours.Full charge
using AC

Pairing Your Earpiece

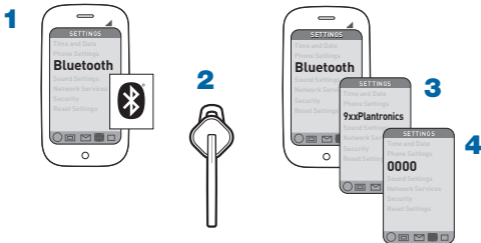
Before using your earpiece for the first time, you must pair it with your Bluetooth® wireless technology enabled phone.

Your new earpiece includes Plantronics QuickPair™ technology to simplify the Bluetooth setup process. The first time you turn your earpiece on, your earpiece automatically enters pairing mode for 10 minutes. Once paired successfully, your earpiece stays on for instant use.

If not successfully paired after 10 minutes, your earpiece automatically powers off. When you turn the earpiece on again, it automatically goes into pairing mode until successfully paired with a Bluetooth phone.

NOTE This earpiece is equipped with Secure Simple Pairing (SSP). If your phone supports SSP, you will not need to enter a PIN code or Passkey.

Pairing Your Earpiece



How to Pair Your Phone with Your Earpiece for the First Time

1 Turn on the Bluetooth feature on your phone.

For most phones, select Settings/Tools > Connections > Bluetooth > On. See your phone's user guide for more information.

2 Turn the earpiece on.

Press and hold the call control button until the indicator flashes red/blue. The earpiece is now in pairing mode.

If you don't see the red/white flash, press and hold the call control button to turn your earpiece off, and then press and hold the call control button again until you see the red/white flash.

3 Use the commands on your phone to locate your earpiece.

For most phones, select Settings/Tools > Connections > Bluetooth > Search > 9xxPlantronics. See your phone's user guide for more information.

4 If prompted for the PIN code or Passkey, enter 0000.

Pairing is successful when the indicator on your earpiece flashes white. Your earpiece is now connected and ready to use.

Adjusting the Fit

For optimal voice clarity, point the boom towards the corner of your mouth.



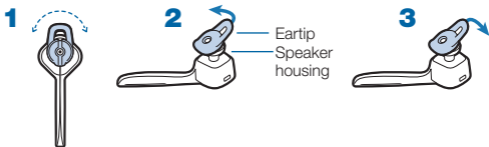
Correct Fit



Incorrect Fit

How to Install a Different Gel Eartip

If the earpiece does not feel stable, the eartip needs adjusting or it may be the wrong size for your ear. The earpiece comes with the medium eartip installed, but you can replace it with the optional small or large eartip provided.



1 Remove the eartip from your ear.

Rotate the eartip on the earpiece to position the stabilizer to rest comfortably in your ear. If the earpiece still feels unstable, then remove the ear-piece from your ear and change the eartip to a different size.

2 To remove the eartip, gently pull the stabilizer loop of eartip off of the speaker housing.

3 To fit a new eartip, position the eartip over the speaker housing with the stabilizer pointed away from the microphone boom and gently press the eartip onto speaker housing.

Earpiece Controls

Turn on the earpiece Press and hold the call control button for 2 seconds until the indicator glows **white**. If earpiece flashes red 3 times when you turn on the earpiece then the battery is very low and should be recharged.

NOTE When your earpiece is in standby mode, the indicator is off. To confirm that your earpiece is on, press any button. You should see a **white** light flash.

Turn off the earpiece Press and hold the call control button for 4 seconds until the indicator glows red. When power is off, indicator stays off.

NOTE If you're wearing the earpiece, you hear ascending tones when the power turns on and descending tones when the power turns off.

Answer or reject a call When your earpiece rings, tap the power button once; you should hear 1 low tone.
To reject a call and send the caller to voice mail, press the call control button for 1 second.

NOTE Your phone may ring before your earpiece rings. Wait until you hear the ring in your earpiece to press the call control button and answer the call.

End a call While on a call, tap the call control button.

Make a call When the earpiece is paired to your phone and in range, enter phone number on your phone and press send. The call automatically transfers to your earpiece.

Transfer a call between earpiece and phone While on a call, press and hold the call control button for 2 seconds. You will hear a single low tone followed by a double low tone. The call will then be transferred to the phone.

DURATION: TAP is under 1 second. PRESS is 1-4 seconds as directed.

Earpiece Controls

Turning the multipoint feature on To prolong battery life, the multipoint feature is turned off by default. To turn on this feature, see “Turning the Multipoint Feature On and Off” on page 13.

Turn on the online indicator While the earpiece is powered on, press and hold the volume button for 4 seconds. **White** light will brighten over 2 seconds. Repeat action to deactivate online indicators. **White** light will dim over 2 seconds. You will hear a single low tone.

Adjust the volume During an active call, tap the volume button. There are 3 volume settings. Each tap will increase the volume until maximum is reached and you hear two low tones. Tapping again will drop volume to minimum setting and subsequent taps will increase volume until maximum is again reached.

⚠ WARNING Do not use earpiece at high volumes for an extended period of time. Doing so can cause hearing loss. Always listen at moderate levels. See www.plantronics.com/healthandsafety for more information on Earpieces and hearing.

Enabling or disabling mute **Enable mute:** Press and hold the volume button for 1 second until you hear a low/high tone and a voice saying “Mute on” (in English). The low/high tone repeats every 15 minutes and the voice advisory every 30 minutes until mute is disabled.

Disable mute: Press and hold the volume button for 1 second until you hear a high/low tone followed by a voice saying “Mute off” (in English).

Hands-Free Features

If your phone and your wireless service provider both support hands-free operation, you can use the following features:

Redial the last number you called Tap the call control button twice. You will hear two low tones.

Voice activated dialing When the earpiece is on, press and hold the call control button for 2 seconds until you hear 1 low tone.

DURATION: TAP is under 1 second. PRESS is 1-4 seconds as directed.

Range

To maintain a connection, keep your earpiece within 33 feet (10 meters) of the Bluetooth phone. If there are obstacles between your earpiece and the phone you may experience interference. For optimal performance, place your earpiece and phone on the same side of your body.

Audio quality degrades as you move out of range. When you are far enough away to lose the connection, you hear a voice say “Lost connection” (in English), followed by a high tone.

The earpiece attempts to reconnect for 60 seconds. If you move back in range, you can manually reconnect by pressing the call control button.

NOTE Audio quality is also dependent upon the device with which the Earpiece is paired.

Indicator Lights and Tones

	Light	Tone
Status check	1 white flash	1 tone
Charging	1 red flash every 10 seconds	None
Fully charged	None	None
Low battery	2 red flashes for 2/3 full battery	None
Very low battery	3 red flashes every 10 seconds	3 high tones every 10 seconds
Pairing	Red and white flashes	1 low tone
Paired	White flash	1 low tone
Turning on	Solid white for 2 seconds	Ascending tones
Turning off	Solid red for 4 seconds	Descending tones

Indicator Lights and Tones

	Light	Tone
Incoming call	3 white flashes every 2 seconds	3 rapid low tones every 2 seconds
Answer call	1 white flash	1 low tone
Call in progress	1 white flash every 2 seconds	None
Volume up or down	1 white flash for each volume adjustment	1 tone with volume corresponding to volume level 2 low tones to indicate maximum volume level reached
End call	1 white flash	1 low tone
Missed call	3 white flashes every 10 seconds for 5 minutes	None
Out of range	None	1 high tone
Back in range	Flashes to match current earpiece state	1 low tone
Turning on multipoint	2 white flashes	None
Turning off multipoint	1 white flash	None

NOTE By default, the online indicator is turned off. To turn on the online indicator, see “Earpiece Controls” on page 8.

Troubleshooting

My earpiece does not work with my phone.

Make sure the earpiece is fully charged.

Make sure earpiece is paired with the Bluetooth phone you are trying to use.

See “Pairing Your Earpiece” on page 4.

My phone did not locate the earpiece.

Turn both your phone and earpiece off and on, and then repeat the pairing process on page 4.

I could not enter my PIN code.

Turn both your phone and earpiece off and on, and then repeat the pairing process on page 4. Your PIN code, or Passkey, is 0000.

I cannot hear caller/dial tone.

The earpiece is not turned on. Press the call control button for approximately 2 seconds until you hear a tone or see the indicator glow blue.

Your earpiece is out of range. Move the earpiece closer to the Bluetooth phone. See “Range” on page 10.

Your earpiece battery is drained. Charge your battery. See “Charging Your Earpiece” on page 1.

The listening volume is too low. Incremental tapping of the volume button will adjust volume. See instructions for adjusting the volume in “Earpiece Controls” on page 8.

Make sure that the eartip fits properly. See “Adjusting the Fit” on page 6.

Troubleshooting

Audio quality is poor. Make sure that earpiece is sitting correctly in ear with boom pointing towards corner of mouth. See “Adjusting the Fit” on page 6.

Callers cannot hear me. Your earpiece is out of range. Move the earpiece closer to the Bluetooth phone. See “Range” on page 9.

Check that you have not activated the Mute feature. See “Earpiece Controls” on page 9.

The eartips do not fit my ear. Try a different size eartip. See “Adjusting the Fit” on page 6.

My earpiece falls out of my ear. Make sure that Earpiece is sitting correctly in ear with boom pointing towards corner of mouth. See “Adjusting the Fit” on page 6.

My eartip needs to be cleaned. Remove the eartip from the earpiece and wash it in warm soapy water and dry thoroughly. When the eartip is completely dry, put it back on your earpiece.

Using More Than One Bluetooth Phone

Plantronics Discovery 975 supports **multipoint technology**, which allows you to use one earpiece with two different Bluetooth mobile phones.

How to Turn the Multipoint Feature On and Off

To use more than one phone, you must turn the multipoint feature on. When this feature is off, your earpiece can connect to only one Bluetooth phone.

- 1 With your earpiece turned off, press and hold the volume and call control buttons simultaneously until earpiece turns on and indicator flashes white 2 times.**
- 2 To pair earpiece to a second phone, see “Pairing Your Earpiece” on page 5.**

NOTE To turn the multipoint feature off, repeat step 1. The indicator flashes white once to indicate multipoint is off.

How to Initiate a Call

The earpiece initiates a call on the phone you most recently used. To use the second phone, initiate the call using the controls on the second phone. The second phone forms an active link with the earpiece.

How to Answer a Call While Talking on the Other Phone

To answer the second call, the first call must be terminated. There is no function for placing one call on hold while answering another call from the earpiece.

- 1 Tap the call control button once to hang up the existing call.**
- 2 Tap the call control button again to answer the new call from the other phone.**

NOTE If you choose not to answer the second call, and you have voice mail on the second phone, the call will go to voice mail.

Product Specifications

Talk Time*	Battery enables up to 5 hours
Standby Time*	Battery enables up to 7 days with multipoint feature OFF Battery enables up to 4 days with multipoint feature ON
Charge Time	Charging earpiece using AC = 1.5 hours Charging earpiece using USB = 1.5 hours Charging earpiece using the case = 1.5 hours Charging the case using AC = 1.5 hours Charging the case using USB = 3.5 hours
Range	Up to 33 feet (10 meters)
Earpiece Weight	8 grams
Battery Type	Earpiece: Lithium ion polymer Charging Case: Nickel-metal hydride
Storage/Usage Temperature	50F–104F (10C – 40C)
Version	Bluetooth 2.1 + EDR (Enhanced Data Rate)
Bluetooth Profiles	Headset Profile (HSP) for talking on the phone Hands-free Profile (HFP) for talking on the phone and operating the phone Secure Simple Pairing (SSP) for pairing earpiece without entering PIN code/Passkey

* Performance may vary by device.

Limited Warranty

This warranty covers defects in materials and workmanship of products manufactured, sold or certified by Plantronics which were purchased and used in the United States and Canada.

The warranty lasts for one year from the date of purchase of the products.

This warranty extends to you only if you are the end user with the original purchase receipt.

We will, at our option, repair or replace the products that do not conform to the warranty. We may use functionally equivalent reconditioned/refurbished/remanufactured/pre-owned or new products or parts.


To obtain service in the U.S., contact Plantronics at 1-866-363-BLUE (2583). To obtain service in Canada call (800) 540-8363.

THIS IS PLANTRONICS' COMPLETE WARRANTY FOR THE PRODUCTS.

This warranty gives you specific legal rights, and you may also have other rights that vary from state to state. Please contact your dealer or our service center for the full details of our limited warranty, including items not covered by this limited warranty.

IMPORTANT SAFETY AND OPERATIONAL INFORMATION

Please read the following safety and operational instructions before using your Bluetooth earpiece and accessories. Please keep these instructions for your reference. Additional warnings may be present on the product, packaging, or in the user instructions.

This symbol  identifies and alerts the user to the presence of important safety warnings.

GENERAL:

Operating and storage temperature is 10°C to +40°C (50°F to +104°F)

WARNINGS

Exposure to high volume sound levels or excessive sound pressure may damage your hearing. Although there is no single volume setting that is appropriate for everyone, you should always use your earpiece with the volume set at moderate levels and avoid prolonged exposure to high volume sound levels. The louder the volume, the less time is required before your hearing could be affected. You may experience different sound levels when using your earpiece with different devices. The device you use and its settings affect the level of sound you hear. If you experience hearing discomfort, you should stop listening to the device through your earpiece. To protect your hearing, some hearing experts suggest that you:

1. Set the volume control in a low position before putting the earpiece on your ears.
2. Limit the amount of time you use earpiece at high volume.
3. Avoid turning up the volume to block out noisy surroundings.
4. Turn the volume down if the sound from the earpiece prevents you from hearing people speaking near you.

See www.plantronics.com/healthandsafety for more information on earpiece and hearing.

- Use of an earpiece that covers both ears will impair your ability to hear other sounds. Use of such an earpiece while operating a motor vehicle or riding a bicycle may create a serious hazard to you and/or others, and is illegal in most regions.
- Check local laws regarding use of a mobile phone and earpiece while driving. If you use the earpiece while driving ensure your attention and focus remain on driving safely.
- Observe all signs and instructions that require an electrical device or RF radio product to be switched off in designated areas, such as gas/refueling stations, hospitals, blasting areas, potentially explosive atmospheres, or aircraft.

- Keep all products, cords, and cables away from operating machinery. As with all corded products, there is a danger of strangulation if a cord should become wrapped around your neck.
- This product is not a toy. Never allow children to play with the product– small parts may be a choking hazard.
- Install and use eartips and earbuds in accordance with the instructions provided. Do not force eartips or earbuds down the ear canal. If either becomes lodged in the ear canal, seek medical attention immediately.
- Ensure eartips and earbuds are kept clean and free of ear wax buildup to maintain the specified product performance.
- Applying excessive pressure to the earpiece may injure the outer ear. Do not wear the earpiece while sleeping or in other situations where pressure may be exerted against the earpiece.
- Do not disassemble or insert anything into the product or charger because this may cause damage to the internal components or cause injury to you.
- If the product or charger: overheats; has a damaged cord or plug; has been dropped or damaged; has been dropped into water, disconnect any charger from its supply, discontinue use of the product and contact Plantronics.
- Prevent rain, moisture or other liquid from coming into contact with the product to protect against damage to your earpiece or injury to you. This warning is not applicable for ruggedized or sports products which are designed to withstand contact with moisture.

CHARGING WARNINGS

- To reduce the risk of electric shock, explosion or fire, use only the charger supplied by Plantronics to charge the product. Do not use the chargers with other products or for any other purpose. Ensure that the voltage rating corresponds to the local mains or power supply you intend to use.
- If your earpiece is designed to be charged with your mobile phone charger using a custom adapter, use only mobile phone chargers approved and provided by your mobile phone manufacturer.
- Charge the earpiece according to the instructions supplied with the unit.
- Ensure the mains (AC Power) socket-outlet for the charger is located near the equipment and is easily accessible.

BATTERY WARNINGS

To avoid the risk of explosion, fire or leakage of toxic chemicals, please observe the following warnings:

- Do not dispose of the product or battery in a fire. The battery cells may explode.
- Do not open or mutilate the battery. There may be corrosive materials which can cause damage to eyes or skin and may be toxic if swallowed.
- Always store batteries where children cannot reach them.
- If your product has a non-replaceable battery, do not attempt to open the product or remove the battery.
- If your product has a replaceable battery, use only the battery type supplied by Plantronics. Observe the correct polarity when installing the battery. Remove the battery if it will not be used for an extended period; remove a spent battery promptly.
- If your product is designed to be recharged from a non-rechargeable battery: use only the battery type specified in the product instructions; **do not use a rechargeable battery.**
- Do not allow any battery or its holder to contact metal objects such as keys or coins.

RECYCLING: Your product and batteries must be recycled or disposed of properly. Contact your local recycling center for information on proper disposal.

FCC REQUIREMENTS PART 15

Operation is subject to the following two conditions:

1. This device may not cause harmful interference.
2. This device must accept any interference received, including interference that may cause undesired operation.

This equipment has been tested and found to comply with the limits for a Class B digital device, pursuant to Part 15 of the FCC Rules.

These limits are designed to provide reasonable protection against harmful interference in a residential installation. This equipment generates, uses, and can radiate radio frequency energy and, if not installed and used in accordance with the instructions, may cause harmful interference to radio communications.

However, there is no guarantee that interference will not occur in a particular installation. If this equipment does cause harmful interference to radio or television reception which can be determined by turning the radio or television off and on, the user is encouraged to try to correct interference by one or more of the following measures:

1. Reorient or relocate the receiving antenna.
2. Increase the separation between the equipment and receiver.
3. Connect the equipment into an outlet on another circuit.
4. Consult the dealer or an experienced radio/TV technician for help.

EXPOSURE TO RADIO FREQUENCY RADIATION

This device and its antenna must not be collocated or operated in conjunction with any other antenna or transmitter. To comply with FCC RF exposure requirements, only use supplied antenna. Any unauthorized modification to the antenna or device could void the user's authority to operate this device.

This equipment complies with FCC radiation exposure limits set forth for an uncontrolled environment. To maintain compliance with FCC

Regulatory Notices

INDUSTRY CANADA RADIO EQUIPMENT

The term "IC:" before the radio certification number only signifies that Industry Canada technical specifications were met. Operation is subject to the following two conditions: (1) this device may not cause interference, and (2) this device must accept any interference, including interference that may cause undesired operation of the device. "Privacy of communications may not be ensured when using this telephone." This product meets the applicable Industry Canada technical specifications of the RSS210.



Plantronics, Inc.
345 Encinal
Santa Cruz, CA 95060
United States
Tel: 800-544-4660
www.plantronics.com

©2009 Plantronics, Inc. All rights reserved. Plantronics, the logo design, Plantronics Discovery, and Sound Innovation are trademarks or registered trademarks of Plantronics, Inc. The Bluetooth® word mark and logos are owned by the Bluetooth SIG, Inc. and any use of such marks by Plantronics, Inc. is under license. All other trademarks are the property of their respective owners.
Patents US 5,210,791; 5,712,453; Patents Pending