

Explorer 210

Bluetooth headset quickstart guide



1. Safety information

Note: Please read this information before you use the headset.

Electronics Devices
To avoid electromagnetic interference, please turn off the headset in any place where posted notices instruct you to do so.

Note: Most modern electronic devices are susceptible to electromagnetic interference (EMI) if inadequately shielded, designed, or otherwise configured for electromagnetic compatibility.

Aircraft
Turn off the headset when on board an aircraft. The use of this headset might interfere with the electrical system of an aircraft.

Medical Instruments
If you use a medical device, such as a pacemaker, consult the manufacturer of your medical device to determine if it is adequately shielded from electromagnetic interference. Your physician can assist you in obtaining this information.

Power Adapter
Only use the supplied power adapter with the headset.

Placement
You are advised to put the headset in a safe place where it will not be bent or crushed when not in use otherwise it may bring harm to human body.

Children
Keep the headset away from children. Some small or detachable parts might be swallowed and result in harm.

Repair or Service
Any attempt to modify or remove of any part of the headset will void the warranty.

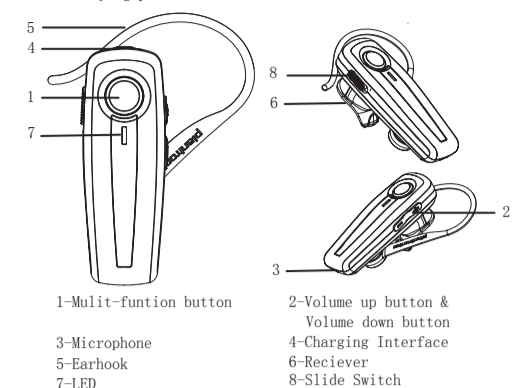
-1-

2. General Descriptions

Explorer 210 is an ear clip type Bluetooth-enabled, wireless hands-free headset, which complies with the Bluetooth V2.0 specification and supports the Headset Profile, Hands-free Profile.

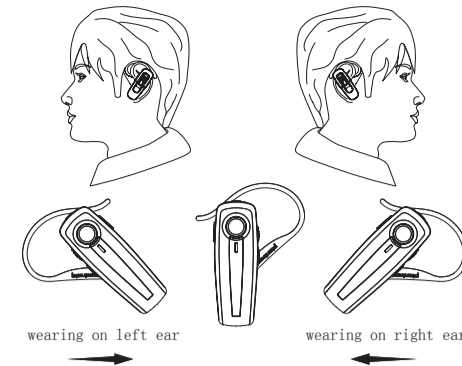
3. Getting started

3.1 Identifying parts



3.2 Adjusting the headset for comfort

The lightweight Explorer 210 can be worn comfortably on either ear. Adjust the headset according to the following figures.



Note: You can adjust the ear-clip angle for comfort, but please be careful in not to break the clip.

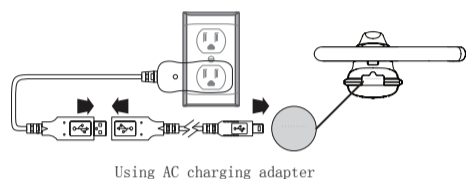
3.3 Status LED

Headset state	LED color and status
Power on	Blue LED On more than 3 seconds
Power off	Red LED On about 2.5s
Pairing	Blue LED & Red LED flash alternately
Standby	Blue LED flashes once every 6s
Ongoing call	Blue LED flashes once every 2s
Low battery	Red LED replaces Blue LED to indicate working state
Charging	Red LED is light
Charging finished	Blue LED & Red LED are both dark

-3-

3.4 Charging the built-in battery

Explorer 210 has a built-in battery, which must be charged fully before using the headset. Charging takes about 1.5 hours. You can charge the headset through the AC adapter.



Using AC charging adapter

- Note:
- When you use Explorer the first time, please assure to charge it over 2 hours until it is full charged.
 - When Red LED flashes once every 4 seconds with alert tone, it is low battery, please charge it.
 - The power source can be only connected to SELV circuit and complies with limited power source.
 - The external power adaptors listed below are in compliance with limited power source.

Vendor	Speedytech	Sunstrong
UK	7501SD-5018A-UK	SB050018
US	7501SD-5018A-UL	SV050018
EU	7501SD-5018A-EU	SL050018
CHINA	7501SD-5018A-CCC	---
AU/NZ	7501SD-5018A-SAA	---
KOREA	7501SD-5018A-EK	---
MEXICO	7501SD-5018A-UL	---

-4-

4. The function at a glance

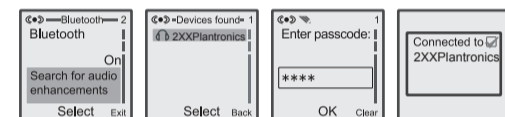
In this guide, "Short press" refers to a time period of less than 1.5 second during which a functional button is being pressed. "Long press" refers to a time period of more than 3.5 second and less than 10 seconds during which a functional button is being pressed.

4.1 Phone operation

Pairing the headset with a phone

Before you can use the headset to make calls, you must pair the headset with your phone. Pairing creates a secure link between your phone and the unique ID of the headset. You only have to pair devices once.

- To put the headset in pairing mode, press and hold (about 6 seconds) the Multi-function button until the LED flash red/blue.
- Scroll to the Bluetooth menu in your phone and search for active devices. (Refer to your phone's user manual for details)
- When the search completes, a list of devices found is displayed. (The screen examples here are from a Nokia 6230)



- Select 2XXPlantronics and when prompted input the default passkey (0000). When successfully paired, the red/blue LED on the headset changes to flashing blue.

-5-

Phone functions at glance

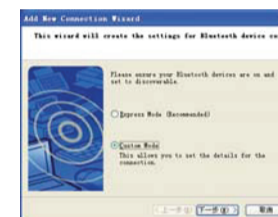
	Headset state	Button
Power on	Power off	Push the slide switch to On state
Power off	Any state	Push the slide switch to Off state
Pairing	Power on	Press and hold multi-function button about 6 seconds
Answer incoming call	Incoming call	Short press multi-function button
Reject incoming call	Incoming call	Long press multi-function button
End a call	Ongoing call	Short press multi-function button
Volume +	Power on	Short press "Volume +" button
Volume -	Power on	Short press "Volume -" button
Voice divert between headset and phone	Ongoing call	Long press multi-function button
Voice dialing	Connected	Press multi-function button until a tone appears and then voice dialing
Redial	Standby	Double press multi-function button
Cancel calling out	Calling out	Short press multi-function button or long press multi-function button

-6-

4.2 Make internet phone calls

There are many internet phone services (VoIP) that let you make calls from your computer. You must add a new connection for this function.

- To put the headset in pairing mode, press and hold (about 8 seconds) Multi-function button until the LED flashes red/blue.
- Right-click the Bluetooth Manager icon in the system tray and click Add New Connection (fig 1).



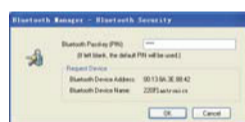
(fig 1)

- Select the Custom Mode radio button and click Next. The wizard searches for device and the following screen appears, select the 2XXPlantronics and click Next (fig 2).



(fig 2)

- Type in the passkey (0000) and click OK (fig 3).



(fig 3)

- Under Service Class, select headset and click Next (fig 4).



(fig 4)



(fig 4)

- When you hear a signal tone on the headset, short-press Multi-function button (fig 5).



(fig 5)

- Click Next .
- A registration confirmation screen appears, Click Finish to complete the connection. The new connection is shown in the Bluetooth Settings window (fig 6).

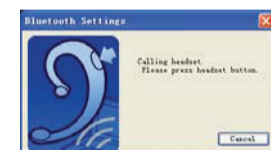


(fig 6)

- Right-click the headset icon and click Connect (fig 7).

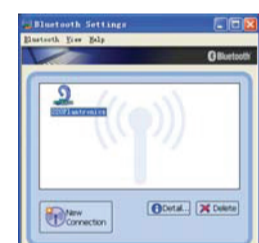


(fig 7)



(fig 7)

- When you hear a single tone on the headset, short-press Multi-function button. Once connected the icon changes to a handshake (fig 8).



(fig 8)

Now you can make an internet phone call by using Explorer 210.

Note: The headset only controls volume, Use the Skype interface for all call functions.

5. Specifications

Battery capacity	105 mAh
Talk time	up to 7 hours
Standby time	up to 200 hours
Weight	11 g (with ear clip)
Size	54 * 19.7 * 23.6 mm

6. FCC RF Radiation Exposure Statement

Federal Communications Commission (FCC) Statement

15.21

You are cautioned that changes or modifications not expressly approved by the part responsible for compliance could void the user's authority to operate the equipment.

-11-

15.105 (b)

This equipment has been tested and found to comply with the limits for a Class B digital device, pursuant to part 15 of the FCC rules. These limits are designed to provide reasonable protection against harmful interference in a residential installation. This equipment generates, uses and can radiate radio frequency energy and, if not installed and used in accordance with the instructions, may cause harmful interference to radio communications. However, there is no guarantee that interference will not occur in a particular installation. If this equipment does cause harmful interference to radio or television reception, which can be determined by turning the equipment off and on, the user is encouraged to try to correct the interference by one or more of the following measures:

- Reorient or relocate the receiving antenna.
- Increase the separation between the equipment and receiver.

- Connect the equipment into an outlet on a circuit different from that to which the receiver is connected.
- Consult the dealer or an experienced radio/TV technician for help.

Canada and USA Regulatory Information:
Operation is subject to the following two conditions:

- this device may not cause interference and
- this device must accept any interference, including interference that may cause undesired operation of the device.

FCC RF Radiation Exposure Statement:

This equipment complies with FCC radiation exposure limits set forth for an uncontrolled environment. End users must follow the specific operating instructions for satisfying RF exposure compliance. This transmitter must not be co-located or operating in conjunction with any other antenna or transmitter.

-12-

7. TECHNICAL ASSISTANCE

Visit our Web site at www.plantronics.com/support for technical support including frequently asked questions, compatibility and accessibility information. The Plantronics Technical Assistance Centre (TAC) is also ready to assist you on 0800 410014 from the UK.

8. EXPOSURE TO RF RADIATION

The internal wireless radio operates within the guidelines found in radio frequency safety standards and recommendations, which reflect the consensus of the scientific community. Independent studies have shown that the internal wireless radio is safe for use by consumers. Visit www.plantronics.com for more information.

NOTE: Modifications not expressly approved by Plantronics, Inc. could void the user's authority to operate the equipment.

9. MODEL AND COUNTRY INFORMATION

37677-04		<input checked="" type="checkbox"/> GBR	
37677-05		<input checked="" type="checkbox"/> AUT, BEL, DEU, DNK, ESP, FRA, GRC, ITA, IRL, LUX, NLD, PRT, SWE, FIN, CYP, CZE, EST, HUN, LVA, LTU, MLT, POL, SVK, SVN	

10. WARNINGS

Use of a headset that covers both ears will impair your ability to hear other sounds. Use of such a headset while operating a motor vehicle or riding a bicycle may create a serious hazard to you and/or others, and is illegal in most regions.

-13-

Do not use headphones / headsets at high volumes for an extended period of time. Doing so can cause hearing loss. Always listen at moderate levels.



Plantronics Ltd
Interface Business Park
Bincknoll Lane
Wootton Bassett
Wiltshire SN4 8QQ, ENGLAND
Tel: 0800 410 014

Plantronics B.V.
Hoofddorp, Nederland
Tel: 0800 752 6876 (NL)
0800 752 687 66 (BE/LUX)

Plantronics Sarl
Noisy-le-Grand, France
No Indigo : 0825 082599
0 , 15 4 TTC / mn
+33 14167 4141

Plantronics GmbH
Hürth, Deutschland
Tel: 0800 9323400
Österreich: 0800 242 500
Schweiz: 0800 932 340

Plantronics Acoustics
Italia Srl
Milano, Italia
Numero Verde: 800 950 934

Plantronics Iberia, S.L.
Madrid, España
Tel: 902 415 191
+34 91 640 47 44 (ES)
Tel: 800 844 517 (PT)

Nordic Region
Tel: Finland: 0800 117 095
Tel: Sverige: 02002 14681
Tel: Danmark: 8088 4610
Tel: Norge: 800 113 36

Plantronics Middle East,
Eastern Europe, and Africa
Tel: +44 1793 842 443

Plantronics, Inc.
345 Encinal Street
Santa Cruz, CA 95060 USA
Tel: 1 831 426 5868

©2006 Plantronics, Inc. All rights reserved. Plantronics, the logo design, Plantronics Sound Innovation and Pulsar are trademarks or registered trademarks of Plantronics, Inc. The Bluetooth word mark and logos are owned by the Bluetooth SIG, Inc. and any use of such marks by Plantronics, Inc. is under license.
Patents Pending.
Printed in USA. (05-06)

-14-

Plantronics Inc.
MODEL: Explorer 210
Rating : 5 V, 180 mA



3115593

CONFORMS TO ANSI/UL STD. 60950-1
CERTIFIED TO CAN/CSA STD. C22.2 NO. 60950-1

-15-