

Pulsar 570

Bluetooth Stereo Headset User Manual



Pulsar 570

SAFETY INFORMATION

Electronic Devices

To avoid electromagnetic interference (EMI), turn off the headset in any place where posted notices instruct you to do so.

Note: Most modern electrical devices are susceptible to electromagnetic interference if inadequately shielded, designed, or otherwise configured for electromagnetic compatibility.

Aircraft

Turn off the headset when on board aircraft. The use of Bluetooth-enabled devices could interfere with the telecommunication system of aircraft.

Medical Instruments

If you use a medical device, such as a pacemaker, consult the manufacturer of your medical device to determine if it is adequately shielded from electromagnetic interference. Your physician might assist you in obtaining this information.

Power Adapter

Only use the supplied power adapter with the headset.

Repair or Service

There are no user-serviceable parts in the headset. Any attempt to modify, or remove the rechargeable battery will void the warranty. Refer all servicing to qualified personnel. (See "Troubleshooting" on page 30.)

Contents

1 Getting Started	8
1.1 Checking the Package Contents	8
1.2 Identifying Parts	9
1.2.1 Multi-function and 3-Way Buttons	9
1.2.2 Status LED	10
1.3 Charging the Built-in Battery	10
1.3.1 Charging with a Computer	11
1.3.2 Charging with the AC Adapter	11
1.3.3 When to Recharge the Battery?	12
1.4 Wearing the Headset	12
1.5 Practice Using Controls	13
1.6 Headset Range of Operation	13
1.7 Powering the Headset on and off	14
2 Phone Operation	14
2.1 Pairing the Headset with a Phone	14
2.2 Making, Redialing, and Ending Calls	15
2.3 Answering a Call	16
2.4 Call Waiting and Three-way Calling	16
2.5 Switching Calls Between Headset and Phone	16
2.6 Rejecting a Call	17
2.7 Adjusting the Volume	17
2.8 Phone Functions at a Glance	18
3 Music Playback	19
3.1 Pairing with a Computer for Music Playback	19
3.2 Listening to Music on your Computer	23
3.3 Music Functions at a Glance	25
4 Making Internet Phone Calls	25
4.1 Pairing with a Computer for Internet Calls	25
4.2 Setting Sound Options for Skype™	28
4.3 Taking Skype Calls	29
5 Appendix	30
5.1 Troubleshooting	30
5.2 Frequently Asked Questions	32
5.3 Specifications	33

1 Getting Started

Congratulations on purchasing the Pulsar 570 Stereo Bluetooth Headset. The ultra-light headset is comfortable to wear and easy to use.

Be sure to read the safety information on page 2 before using the headset.

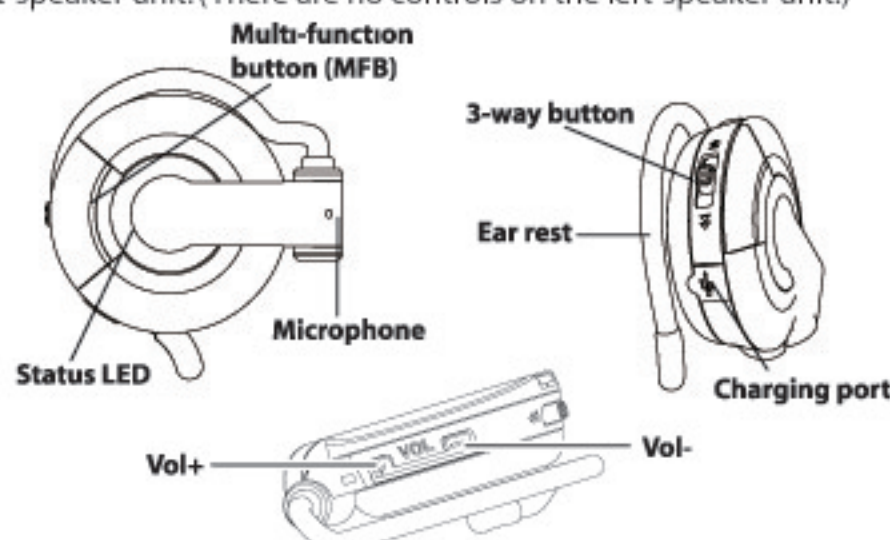
1.1 Checking the Package Contents

Check that the following items are included in your package.

If any item is missing or damaged, return the package to your reseller.

1.2 IDENTIFYING PARTS

Refer to the following illustration to identify the parts on the headset right-speaker unit. (There are no controls on the left-speaker unit.)



1.2.1 Multi-function and 3-Way Buttons

The multi-function button is called **MFB** in this manual. Its function depends on how long you keep the button pressed. A short-press is less than one second. A long-press is two to five seconds. A very-long-press is more than five seconds. (as indicated in this manual).

The **3-Way** button can be pressed in the following three ways:



Here is an example of how button presses are described in this manual:

To turn on the headset, long-press **MFB** (about 3 seconds). To mute the microphone volume, press **3-Way** . To play the next song press **3-Way** .

Important:The **3-Way** button only works with Bluetooth devices that support the A2DP profile.

1.2.2 Status LED

Function	LED color and status
Headset off	Off
Pairing mode	Flashes blue/red
Paired	Flashes blue 5 times
Standby	Flashes blue every 2 seconds
Making a phone call	Flashes blue every 2 seconds
Playing music	Flashes blue every 1 second
Switch off	Flashes red
Charging, headset off	On steady red

1.3 CHARGING THE BUILT-IN BATTERY

Attention:Headset can't work when it is charging!

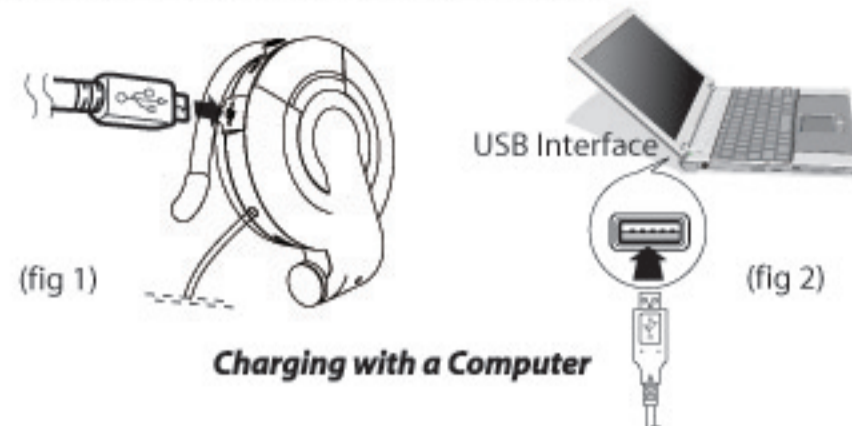
The headset has a built-in battery, which must be charged fully before you use the headset. Charging takes about 3.5 hours. You can charge the headset through the ac adapter or the USB connector on a computer.

When fully charged, the headset can be on standby for up to 200 hours. You can call or listen to music continuously for up to 14 hours.

Caution:Be sure the USB connectors are aligned correctly and do not force the connection. Use the USB icon on the connectors and in the illustrations below as a guide.

1.3.1 Charging with a Computer

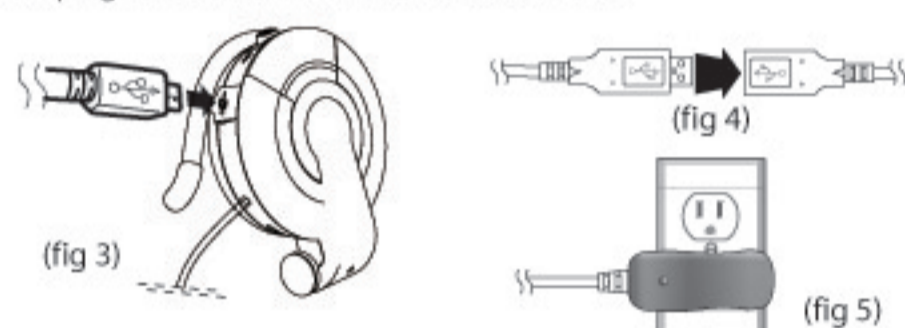
1. Open the charging port dust cover.
2. Connect the small connector on the USB cable to the charging port on the headset (fig 1).
3. Connect the other end of the USB cable to a USB connector on the computer. The LED lights red (fig 2).
4. Unplug the cable when the red LED turns off.



1.3.2 Charging with the AC Adapter

1. Open the charging port dust cover.
2. Connect the small connector on the USB cable to the U charging port on the headset (fig 3).

3. Connect the other end of the USB cable to the USB connector on the AC adapter (fig 4).
4. Plug the AC adapter into an electrical outlet. The LED lights red (fig 5).
5. Unplug the cable when the red LED turns off.



Tip! You can not use the headset while it is charging. When charging, the LED remains red.

1.3.3 When to Recharge the Battery?

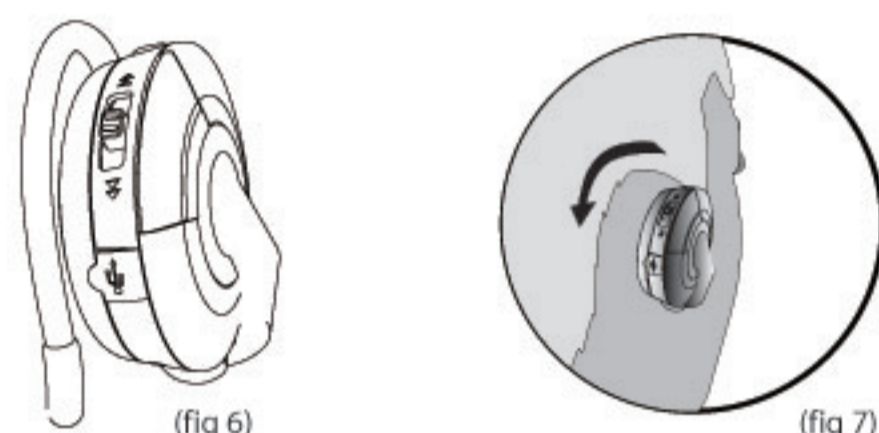
When you turn on the headset and the LED lights red, the battery needs to be recharged.

Important:The rechargeable battery in the headset must be disposed or recycled according to local ordinance regulations.

1.4 WEARING THE HEADSET

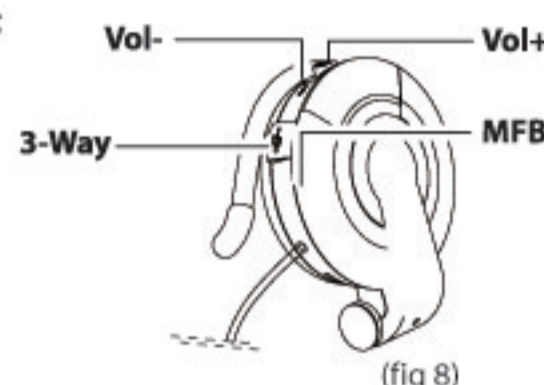
The headset is designed to rest comfortably on your ears with the cable behind your neck. The speaker unit with the controls goes over your right ear.

1. Hold the headset and push the ear rest with one finger to extend it (fig 6).
2. Hook the ear rest over your ear and release the speaker (fig 7).



1.5 PRACTICE USING CONTROLS

With the headset on, push **Vol-** with your index finger and **Vol+** with your middle finger. Use your thumb to press the **3-Way** and **MFB** buttons (fig 8).



Of course, you can use any method to operate the controls. Just use one method and it will quickly become second nature.

1.6 HEADSET RANGE OF OPERATION

The range of operation between Bluetooth devices is about 10 meters. Bluetooth does not require line of sight and can transmit through walls and other nonmetal obstacles. Thick or reinforced concrete can limit the range.

1.7 POWERING THE HEADSET ON AND OFF

To indicate operation status, the headset LED lights . While trying out headset functions, you can put the left speaker on and hold the right speaker to see the controls and the LED.

1. Standby Mode: Long-press (about 3 seconds) **MFB** until the LED flashes blue.

Pairing Mode: Long-press (about 5 seconds) **MFB** until the LED flashes red/blue. (After about 3 seconds, the LED flashes blue [standby]; keep the button pressed until the LED flashes red/blue.) Important: You cannot go from standby mode to pairing mode. You must turn off the headset, and then long-press **MFB** to be in pairing mode.

2. To turn off the headset, long-press (about 5 seconds) **MFB** until you hear a beep. Then release **MFB**. The LED flashes red five times and the headset turns off.

2 Phone Operation

You can use the headset with most Bluetooth-enabled phones. (Visit <http://www.goertek.com> for a list of supported phones.) The headset supports Bluetooth handsfree and headset profiles; however your phone may not support all the features mentioned below.

2.1 PAIRING THE HEADSET WITH A PHONE

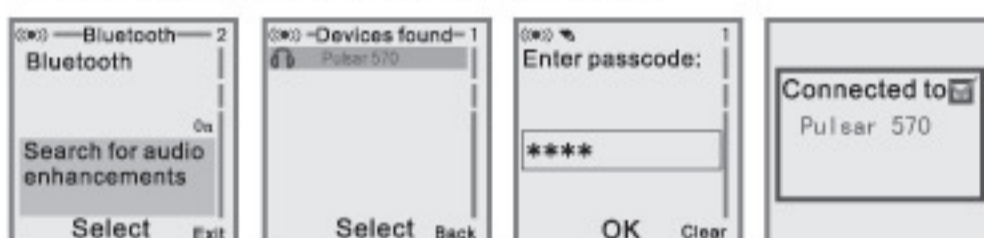
Before you can use the headset to make calls, you must pair the headset with your phone. Pairing creates a secure link between your phone and the unique ID of the headset. You only have to pair devices once.

1. To put the headset in pairing mode, long-press (about 5 seconds)

MFB until the LED flashes red/blue.

2. Scroll to the Bluetooth menu in your phone and search for active devices. (Refer to your phone's user manual for details.)

3. When the search completes, a list of devices found is displayed. (The screen examples here are from a Nokia 6230.)



4. Select Pulsar 570 and when prompted input the default passkey [0000].

When successfully paired, the red/blue LED on the headset changes to flashing blue.

You can pair the headset with up to eight Bluetooth devices. When you turn on the headset, it automatically tries to pair with the last device it was connected to. When you pair the device with a ninth device, the oldest-paired device is deleted.

2.2 MAKING, REDIALING, AND ENDING CALLS

If your phone supports voice dialing, you can make the call from the headset. Otherwise, you must initiate the call from your phone.

1. Voice dialing: Short-press **MFB**, then say the voice tag.

Phone keypad: Dial the number on the phone.

2. To end the call, short-press **MFB** (or use the end-call function on your

3. To redial the last number, long-press (about 3 seconds) **3-way** .

Note:if necessary, rerecord your voice tags using the microphone on the headset.

2.3 ANSWERING A CALL

If you want the headset to automatically answer incoming calls, enable this feature on your phone.

Auto answer: The headset rings on an incoming call and you are connected automatically.

Manual answer: When the headset rings for the incoming call, short-press **MFB** to connect.

Note:Some phones may not ring or may not transfer a ring tone to the headset for incoming calls. You can still take the call as described above.

2.4 CALL WAITING AND THREE-WAY CALLING

1. To answer a second incoming call, short-press **3-way** , the incoming call will be accept and the active call will be held.

2. To join the second call with the first, long-press **MFB**, both calls are active.

3. To release all call, short-press **3-way** .

4. To answer a second incoming call, and release the active call, short-press **MFB**.

5. To keep active call, and release other calls, short-press **3-way** .

2.5 SWITCHING CALLS BETWEEN HEADSET AND PHONE

While you are making a call, you can switch the call between the headset and your phone.

Headset to phone: Long-press (about 3 seconds) **MFB**. (Or switch the call through your phone if supported.) The call switches to your phone.

Phone to headset: Long-press (about 3 seconds) **MFB**. (Or switch the call through your phone if supported.) The call switches back to the headset.

Phone to headset (when headset off): If the headset is off during a call, turn on the phone and short-press **MFB**. The call switches to the headset.

2.6 REJECTING A CALL

If you do not want to take an incoming call, long-press **MFB** . The incoming call is cut off.

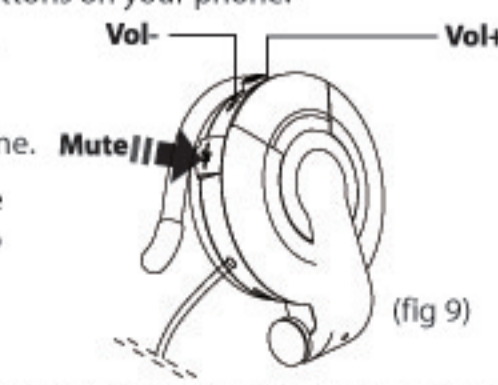
2.7 ADJUSTING THE VOLUME

You can adjust the volume during a call by pressing the volume buttons on the headset or the volume buttons on your phone.

Press **VOL+** to increase **Vol+** the volume (fig 9).

Press **VOL-** to decrease the volume.

Long-press **3-Way** to mute the microphone. Long-press again to enable the microphone.



Note:Mute only affects the microphone. You can still hear the caller; but the caller can't hear you.

2.8 PHONE FUNCTIONS AT A GLANCE

	Phone	Headset	Button
Pairing	On	Off	Long-press (5 sec.) MFB until LED flashes blue/red
Voice dialing	On	On	Short-press (1 sec.) MFB , say voice tag
Manual dialing	On	On	Dial the number on the phone
Switch ongoing call (phone to headset)	Ongoing call	Ongoing call	Long-press (3 sec.) MFB
Switch ongoing call (headset to phone)	Ongoing call	Ongoing call	Long-press (3 sec.) MFB
Redial	On	On	Long-press 3-Way ▾ (3 sec.)
End call	Ongoing call	Ongoing call	Short-press (1 sec.) MFB
Answer call	Ringing	Ringing	Short-press (1 sec.) MFB
Reject call	Ringing	Ringing	Long-press (3 sec.) MFB
Call waiting	Ongoing call; 2 nd call in	Ongoing call; 2 nd call in	Short-press 3-Way △ (1 sec.)
Three-way calling	Ongoing call; 2 nd call in	Ongoing call; 2 nd call in	First, short-press 3-Way △, second, long-press MFB
Mute microphone	In use	In use	Long-press 3-Way ▢

18

	Phone	Headset	Button
Answer 2nd call (accept waiting/holding call, release the ongoing call)	Ongoing call; 2 nd call in	Ongoing call; 2 nd call in	Short-press MFB (1 sec.)
Answer 2nd call, continue ongoing call, release waiting/holding call	Ongoing call; 2 nd call in	Ongoing call; 2 nd call in	Short-press 3-Way ▢ (1 sec.)
End all calls	Ongoing call; 2 nd call in /3-way	Ongoing call; 2 nd call in /3-way	Short-press 3-Way ▾ (1 sec.)

3 Music Playback

You can listen to music in high-quality stereo on your computer or an audio player if the device supports streaming audio over Bluetooth (through a Bluetooth AV profile). You can purchase a Bluetooth dongle (transmitter/receiver) that connects to the USB connector on the computer; some models also connect to the audio-out connector on an MP3 player or other audio device.

3.1 PAIRING WITH A COMPUTER FOR MUSIC PLAYBACK

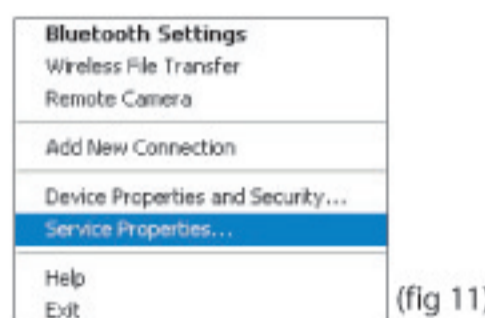
This section assumes you have already installed a Bluetooth USB dongle on your computer. Before you can use the headset for music playback with your computer, you must pair the headset with your computer. The headset must be turned on in pairing mode. The following instructions are for pairing with the Toshiba® Bluetooth Setting utility.

1. To put the headset in pairing mode, long-press (about 5 seconds) **MFB** until the LED flashes red/blue.
2. Right-click the **Bluetooth Manager** icon (fig 10) in the system tray and click **Service Properties** (fig 11).

19

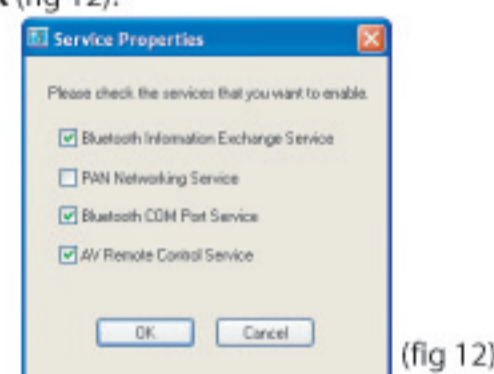


(fig 10)



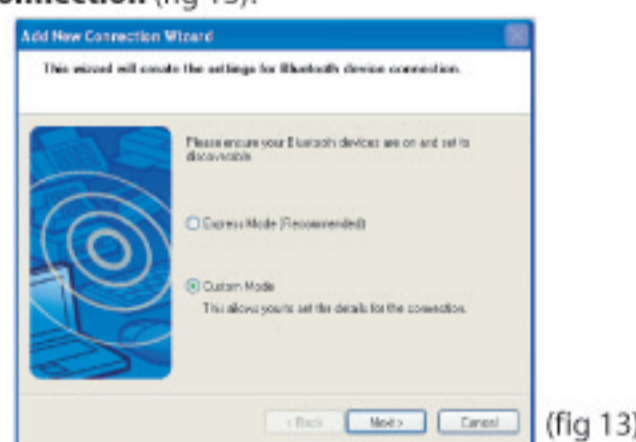
(fig 11)

3. In the Service Properties window, check **AV Remote Control Service** and click **OK** (fig 12).



(fig 12)

4. Right-click the **Bluetooth Manager** icon in the system tray and click **Add New Connection** (fig 13).



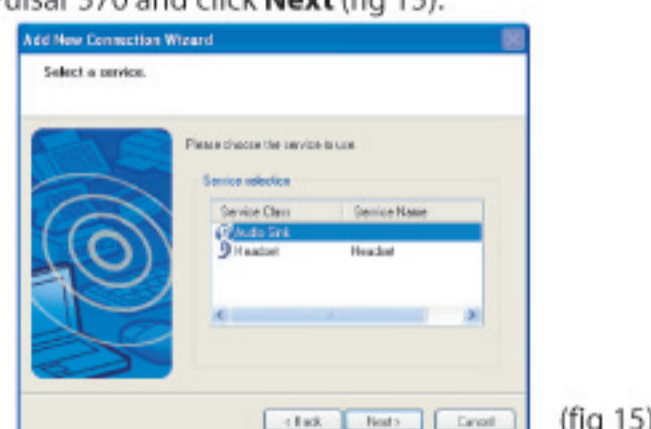
(fig 13)

5. Select the **Custom Mode** radio button and click **Next**. The wizard searches for the device and the following screen appears (fig 14).



(fig 14)

6. Select **Pulsar 570** and click **Next** (fig 15).



(fig 15)

7. Under **Service Class**, select **Audio Sink** and click **Next** (fig 16).

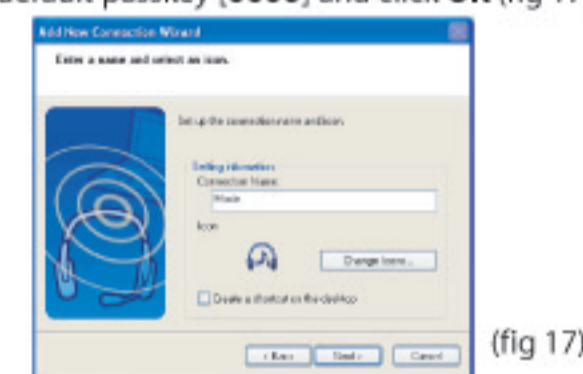


(fig 16)

20

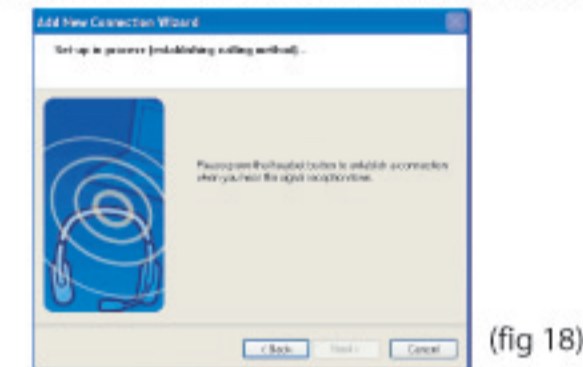
21

8. Type in the default passkey **[0000]** and click **OK** (fig 17).



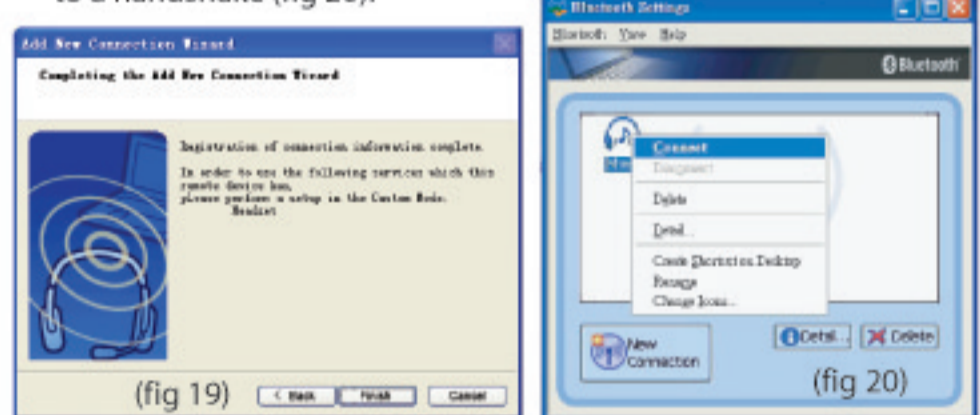
(fig 17)

9. Type a connection name such as **Music** and click **Next** (fig 18).



(fig 18)

10. Click **Finish** to complete the connection (fig 19). Right-click Pulsar 570 icon and click **Connect**. Once connected the icon changes to a handshake (fig 20).



(fig 19)

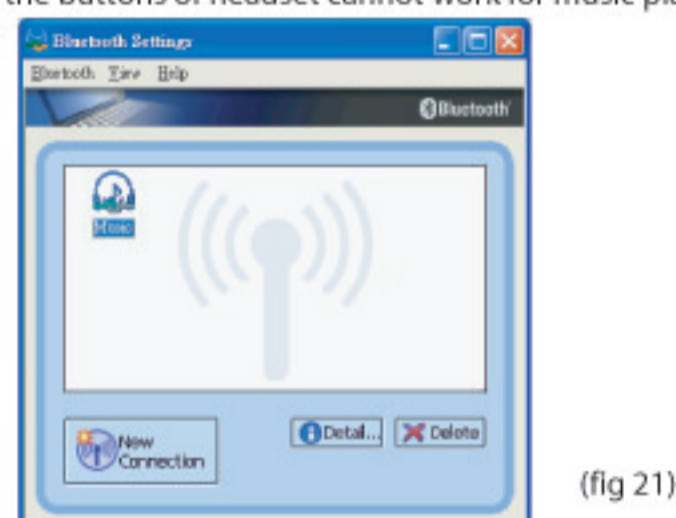


(fig 20)

22

11. The new connection is shown in the Bluetooth Settings window (fig 21).

Now you can listen to the music listed in **Windows Media Player**. Press **Vol+** or **Vol-** key to adjust the music volume. (please re-start the computer if the buttons of headset cannot work for music playback.)



(fig 21)

3.2 LISTENING TO MUSIC ON YOUR COMPUTER

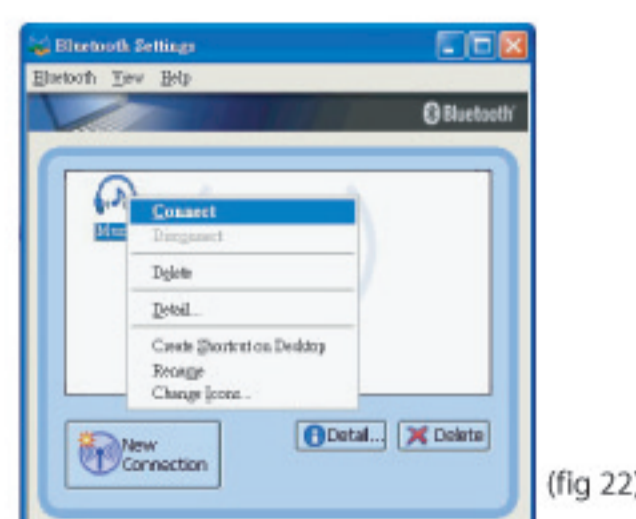
When listening to music you should connect to the Music (AV) profile.

Note: if you create a profile for Internet phone calls (see **"Making Internet Phone Calls"** on page 27) and use it for listening to music, the stereo function of the headset will be lost resulting in poor sound quality.

The example below describes how to use the headset with **Windows Media Player™**.

1. To turn on the headset, long-press (about 3 seconds) **MFB** until the LED flashes blue.
2. If the Bluetooth Settings utility is not open, double-click the **Bluetooth Manager** icon in the system tray (fig 22).

23



(fig 22)

3. Right-click Pulsar 570 icon and click **Connect**. Once connected the icon changes to a handshake (fig 23).



(fig 23)

4. Open and start playing a playlist on Windows Media Player. (You can also press **3-Way** to open Windows Media Player.)
5. Press **VOL+** on the headset to adjust the volume.
6. Press **3-Way** ▾ to toggle play/pause.
7. Press **3-Way** ▾ to play the next song.
8. Press the **3-Way** ▴ to play the previous song.
9. Long-press **3-Way** (about 3 seconds) to stop playing; short-press to resume play.
10. To turn off the headset, long-press (about 5 seconds) **MFB**.

Note: You can use the headset to listen to other music players on your computer. However, other players may not support using the

24

3.3 MUSIC FUNCTIONS AT A GLANCE

Function	Press
Open player	3-Way ▢
Play	3-Way ▢
Pause/play	3-Way ▢
Stop	Long-press (3 sec.) 3-Way ▢
Next song	3-Way ▾
Previous song	3-Way ▴

4 Making Internet Phone Calls

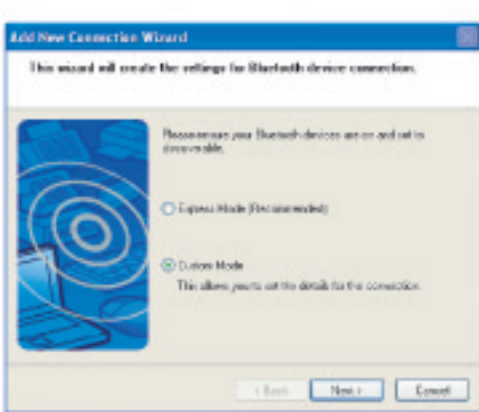
There are many Internet phone services (VoIP) that let you make calls from your computer. Because Internet calling uses a different Bluetooth headset profile than for music, you must add a new connection for this function.

4.1 PAIRING WITH A COMPUTER FOR INTERNET CALLS

Disconnect from the **Music** profile if connected and turn off the headset. (You cannot make a new connection if the headset is connected to another profile.)

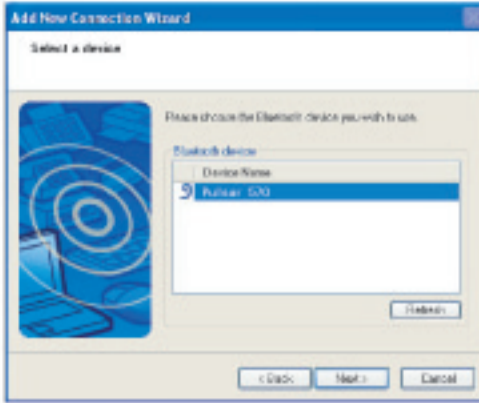
1. To put the headset in pairing mode, long-press (about 5 seconds) **MFB** until the LED flashes red/blue.
2. Right-click the **Bluetooth Manager** icon in the system tray and click **Add New Connection** (fig 24).

25



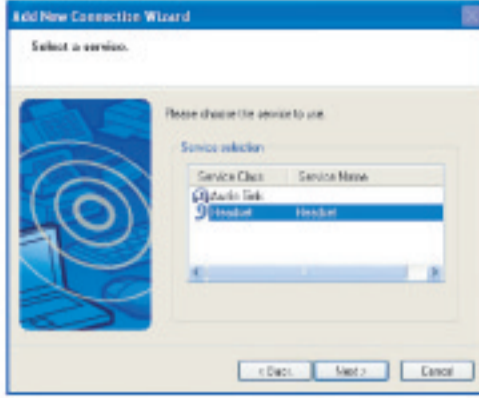
(fig 24)

3. Select the **Custom Mode** radio button and click **Next**. The wizard searches for the device and the following screen appears (fig 25).



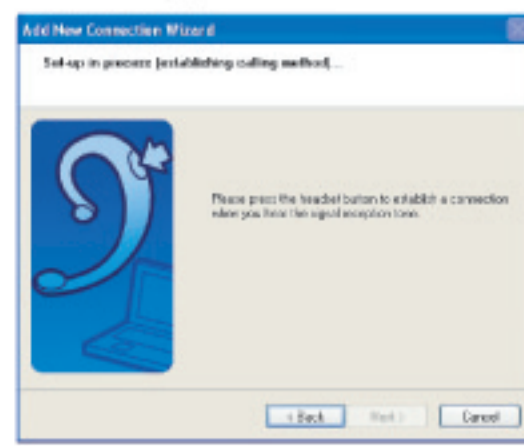
(fig 25)

4. Select **Pulsar 570** and click **Next** (fig 26).



(fig 26)

5. Under **Service Class**, select **Headset** and click **Next** (fig 27).



(fig 27)

6. When you hear a signal tone on the headset, short-press **MFB** (fig 28).



(fig 28)

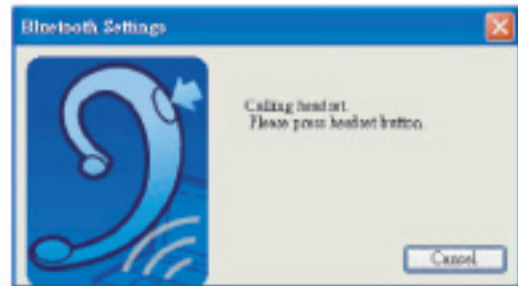
7. Type a connection name such as **Phone** and click **Next**.

8. A registration confirmation screen appears. Click **Finish** to complete the connection. The new connection is shown in the Bluetooth Settings window (fig 29).



(fig 29)

9. Right-click the **Phone** icon and click **Connect** (fig 30).



(fig 30)

10. When you hear a signal tone on the headset, short-press **MFB**. Once connected the icon changes to a handshake (fig 31).

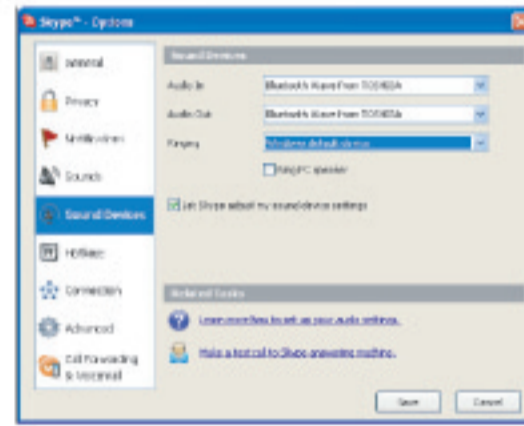


(fig 31)

4.2 SETTING SOUND OPTIONS FOR SKYPE™

Skype PC-to-PC calls are free, and there is a per-minute charge to call normal phones. Skype can be downloaded from <http://www.skype.com>. Before you can take a Skype call through the headset, you must configure Skype sound options.

1. Make sure you are connected to the Skype profile.
2. On the Skype menu bar click **Tools -> Options**.
3. In the Options window, select **Sound Devices** (fig 32).



(fig 32)

4. Under the **Audio In/Out** drop-down menus, select the Bluetooth audio option and click **Save**. (If you are not connected to the headset, Bluetooth audio will not be available under Sound Devices.)
5. Under **Skype Contacts**, click **Skype Test Call** to check if the headset speakers and microphone are working. (Refer to **“Troubleshooting”** on page 32 if you have an audio problem.)

4.3 TAKING SKYPE CALLS

When taking Skype calls you must connect to the Phone (headset) profile. If you take a call when connected to the Music (AV) profile, the microphone will not function (fig 33).



(fig 33)

Note: The headset only controls volume. Use the Skype interface for all call functions.

1. Answer or place a call with the Skype interface.
2. Press **VOL-/+** on the headset to adjust the volume.
3. Use the Skype interface to end the call.

5 Appendix

5.1 TROUBLESHOOTING

If you cannot get the headset to work, try the following:

- Turn off the devices and turn them on again.
- Ensure the headset is charged.
- Ensure devices are within the 10-meter (33 feet) range.
- Ensure no obstructions such as thick concrete walls are between connecting devices.

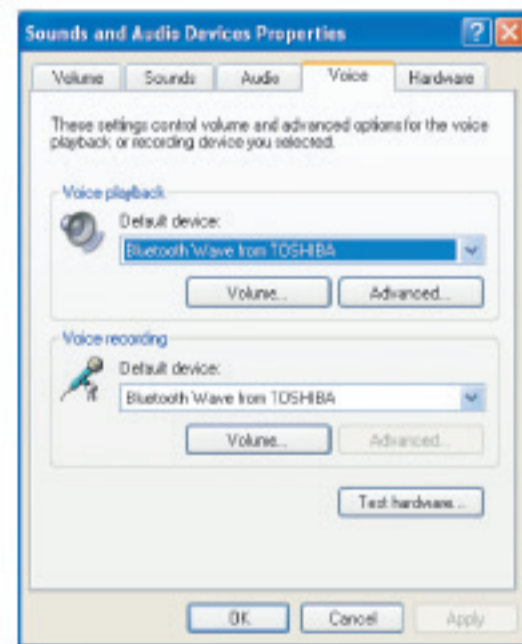
Try the following to troubleshoot an audio problem when connected to a computer.

1. Click **Start -> Control Panel**.
2. In **Control Panel**, open **Sounds and Audio Devices**.
3. Select the **Audio** tab and ensure your Bluetooth device is selected under **Sound playback** and **Sound recording** (fig 34).



(fig 34)

4. Select the **Voice** tab and ensure your Bluetooth device is selected under **Voice playback** and **Voice recording** (fig 35).



(fig 35)

5. Click **Test hardware** and follow the instructions in the Wizard.

If the headset is still not working after trying the above, or if you need assistance with any other problem, please contact us:

GoerTek Electronics

Global Location:
 ■ Qingdao, China ■ Shenzhen, China ■ Taiwan
 ■ Hong Kong ■ USA
<http://www.goertek.com>
 e-mail: service@goertek.com

5.2 FREQUENTLY ASKED QUESTIONS

1. CAN THE HEADSET BE USED WITH ALL PHONES?

No. It is only suitable for handsets that have the Bluetooth Voice Gateway function built in.

2. HOW FAR IS THE EFFECTIVE RANGE BETWEEN THE HEADSET AND A BLUETOOTH-ENABLED DEVICE?

The effective range (without obstruction) is 10 meters (33 feet, Class II). Thick or reinforced concrete walls limit the range.

3. CAN ANOTHER BLUETOOTH PHONE USER HEAR MY CONVERSATION?

No. Through pairing, you have created a secure link between your phone and the headset.

4. IS PAIRING NEEDED EACH TIME WHEN I USE THE HEADSET?

No. The pairing information will be stored in both devices even if one or both of them have been turned off.

5. IS IT NECESSARY TO RECONNECT THE TWO DEVICES WHEN THERE IS AN INTERRUPTION ON THE LINK BETWEEN MY PHONE AND HEADSET?

It varies according by phone. Some phones can be reconnected automatically if both devices are within the effective distance; some must be reconnected.

6. WHY IS THERE NOISE IN MY HEADSET?

When the distance between your phone and headset exceeds the effective distance, background noise may occur. A poor signal for your phone can also cause background noise on the headset.

7. WHAT SHOULD I DO IF THE HEADSET'S SOUND QUALITY IS POOR?

Try adjusting the volume of your phone or the headset. Also, check the quality of the signal for your phone in your area.

5.3 SPECIFICATIONS

Version	Bluetooth 1.2
Supported profiles	Headset, handsfree, A2DP, AVR CP
Talk time	Up to 14 hours
Standby time	Up to 200 hours
Weight	51 grams (1.8 oz)
Dimensions	55.9mm x 44.8mm x 18.5mm (2.2 inches x 1.76 inches x 0.73 inches)

5.4 WARRANTY

Please retain the sales receipt as proof of purchase. During the 1-year warranty period, the product is eligible for replacement in case of defects in material and workmanship. In such cases, the defective unit will be repaired or replaced by the manufacturer or an authorized distributor. However, this warranty does not cover damages caused by improper use or from unauthorized modifications by third parties. In addition, this warranty does not cover expendable materials and defects, which constitute as normal wear and tear.

Federal Communications Commission (FCC) Statement

15.21

You are cautioned that changes or modifications not expressly approved by the part responsible for compliance could void the user's authority to operate the equipment.

15.105(b)

This equipment has been tested and found to comply with the limits for a Class B digital device, pursuant to part 15 of the FCC rules. These limits are designed to provide reasonable protection against harmful interference in a residential installation. This equipment generates, uses and can radiate radio frequency energy and, if not installed and used in accordance with the instructions, may cause harmful interference to radio communications. However, there is no guarantee that interference will not occur in a particular installation. If this equipment does cause harmful interference to radio or television reception, which can be determined by turning the equipment off and on, the user is encouraged to try to correct the interference by one or more of the following measures:

- Reorient or relocate the receiving antenna.
- Increase the separation between the equipment and receiver.
- Connect the equipment into an outlet on a circuit different from that to which the receiver is connected.
- Consult the dealer or an experienced radio/TV technician for help.

Operation is subject to the following two conditions:

- 1) this device may not cause interference and
- 2) this device must accept any interference, including interference that may cause undesired operation of the device.

FCC RF Radiation Exposure Statement:

This equipment complies with FCC radiation exposure limits set forth for an uncontrolled environment. End users must follow the specific operating instructions for satisfying RF exposure compliance. This transmitter must not be co-located or operating in conjunction with any other antenna or transmitter.