

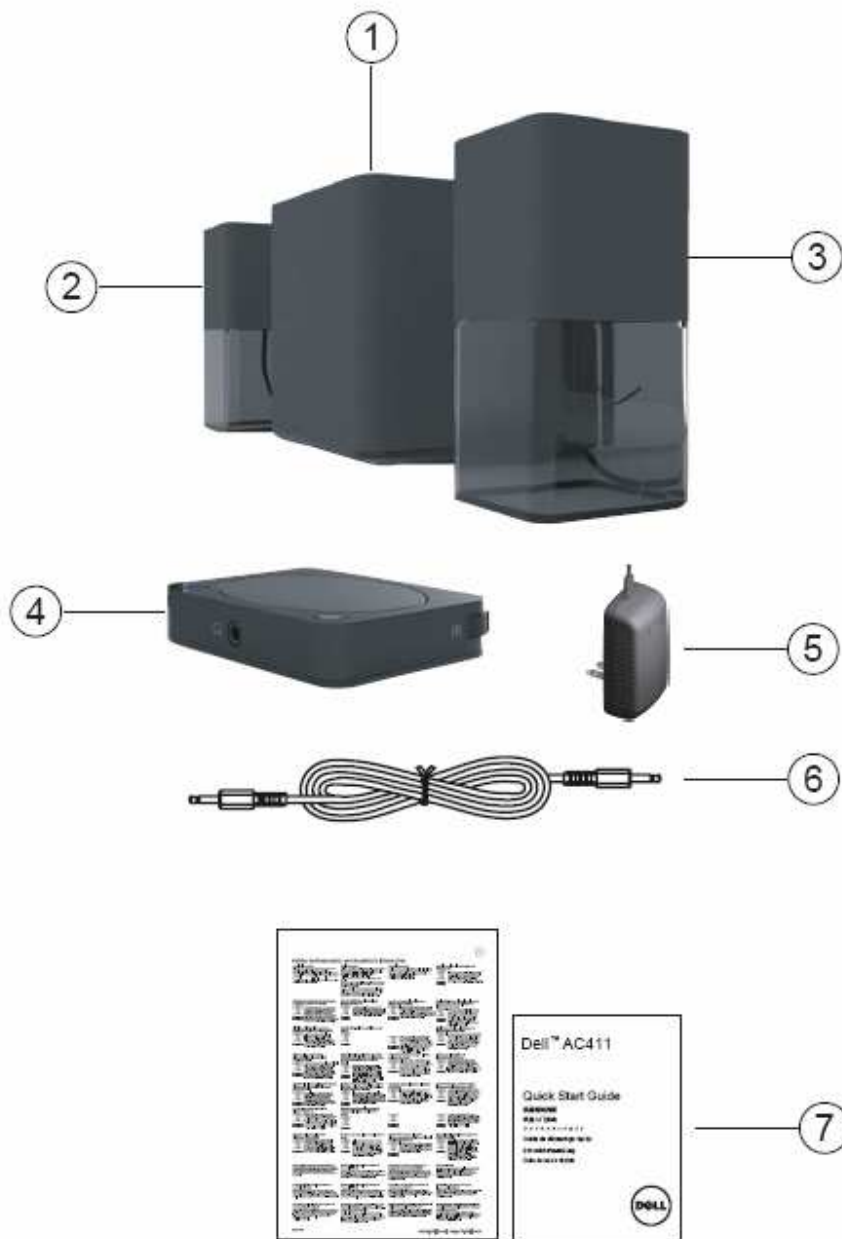
# What is the DELL AC411 Speaker and how does it work

## *Table of Contents*

1. Overview
  2. How to Connect the Dell AC411 Speaker to the Dell computer
  3. How to pair the Bluetooth code
  4. Trouble shooting Dell AC411 Speaker
- 
1. **Overview**
    - 1.1 Product over view
    - 1.2 Product Labels
    - 1.3 Product Spec

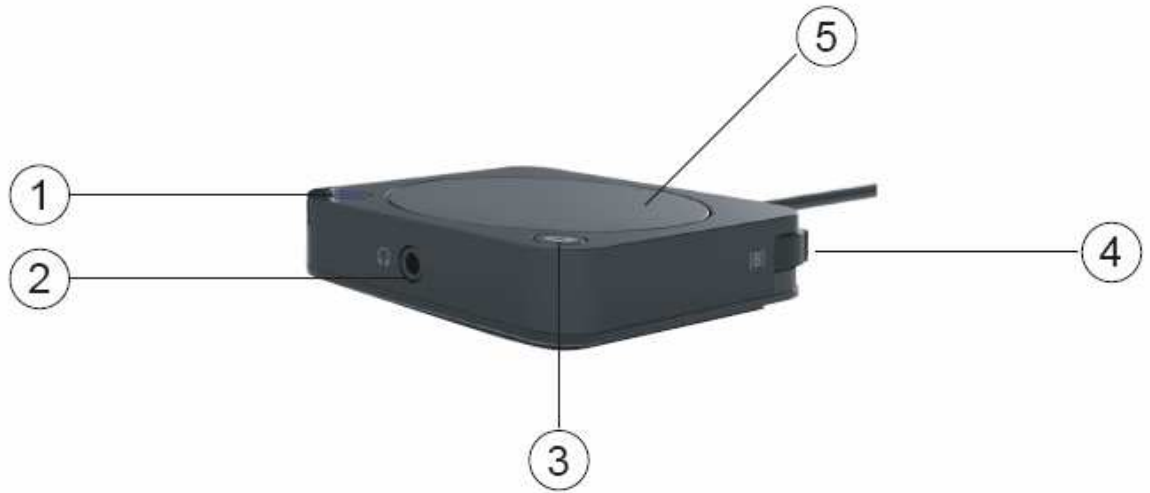
## **DELL AC411 Speaker**

- 1.1 Product over view



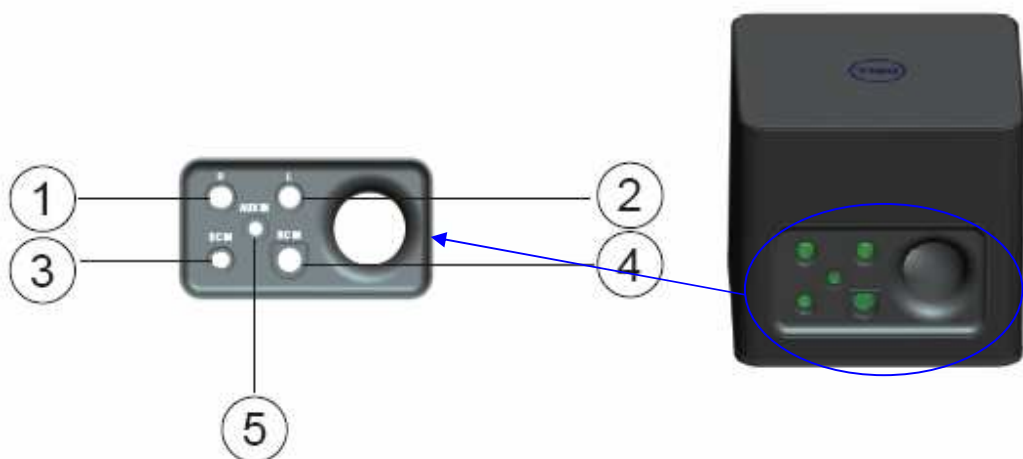
1. Main unit	1pcs
2. Left satellite	1pcs
3 Right satellite	1pcs
4.RC remote control	1pcs
5.Power adaptor	1pcs
6. AUX In cable	1pcs
7. literature document	1pcs

View of the RC control



1.	Bluetooth icon button
2.	Earphone Jack
3.	Power button
4.	Bass button
5.	Volume button

View of the main unit's rear



1.	Right Jack
2.	Left Jack
3.	DC IN Jack
4.	RC IN Jack
5.	AUX IN Jack

## 2. PPID Label



## 1.3 Product Spec

### General

Model Number	AC411
Connection Type	Bluetooth 3.0 AUX-IN (3.5mm Jack)
Supported Operating Systems	Microsoft Windows 7 SP1 or later, Windows 8

### Electrical

Power adaptor	18V 2.5A
Output power	7W+7W +15W continuous RMS power @ $\leq 10\%$ THD

### Physical Characteristics

Main unit L*W*H	141*150*150 mm
Line in cable length	200 mm
RC remote control L*W*H	70*70*17.5 mm
Adaptor cable	179mm
Cable on the RC remote control	200 mm
Weight	2124 g

### Environmental

Operating temperature	0 °C to 40 °C
Storage temperature	-40 °C to 65 °C
Operating humidity	90% maximum relative humidity, non condensing
Storage humidity	90% maximum relative humidity, non condensing

### Bluetooth 3.0 Wireless

Radio transmission	The baseband transmit data is GFSK Modulated in the 2.4 GHz ISM band
Range	Up to 10m radio range. No performance degradation up to max radio range (10 m)

AC411 offers Customers the opportunity to bring the full range of audio to their workspace while continuing to take advantage of the reduced footprint presented by their Dell Platform.

**NOTE:**

The Dell AC411 Speaker will also work with other Music sources such as, MP3 or Mobile Phones with Ø3.5mm Audio jack.

All the speaker systems connect to the audio ports are in the same way. Refer to the connection diagrams and quick start Guide for a better understanding of how they operated.

**2. How to Connect the Dell AC411 Speaker to the Dell compute**

1. Plug the satellites into the R/L Jack according to the silkscreen on the rear of the main unit.
2. Plug the RC remote control into the RC IN Jack.
3. Plug the AUX IN cable into the AUX IN Jack and with the other side into the 3.5mm jack or earphone jack on the computer.
4. Connect the adaptor onto the AC411 via the DC IN Jack.

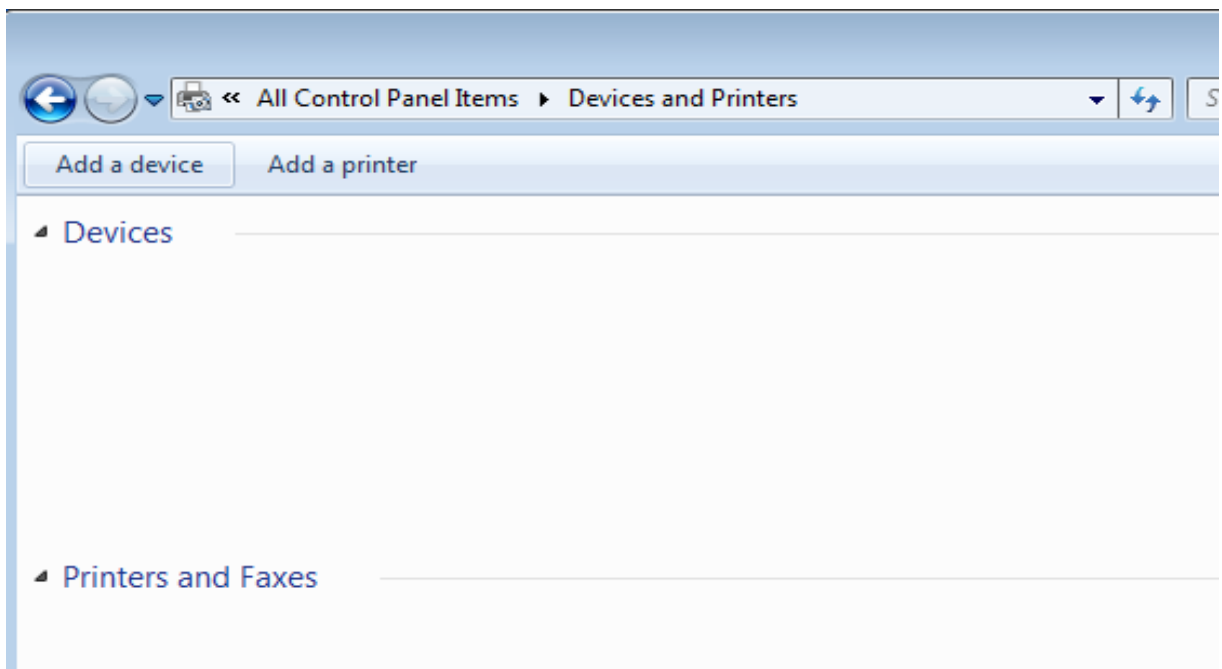


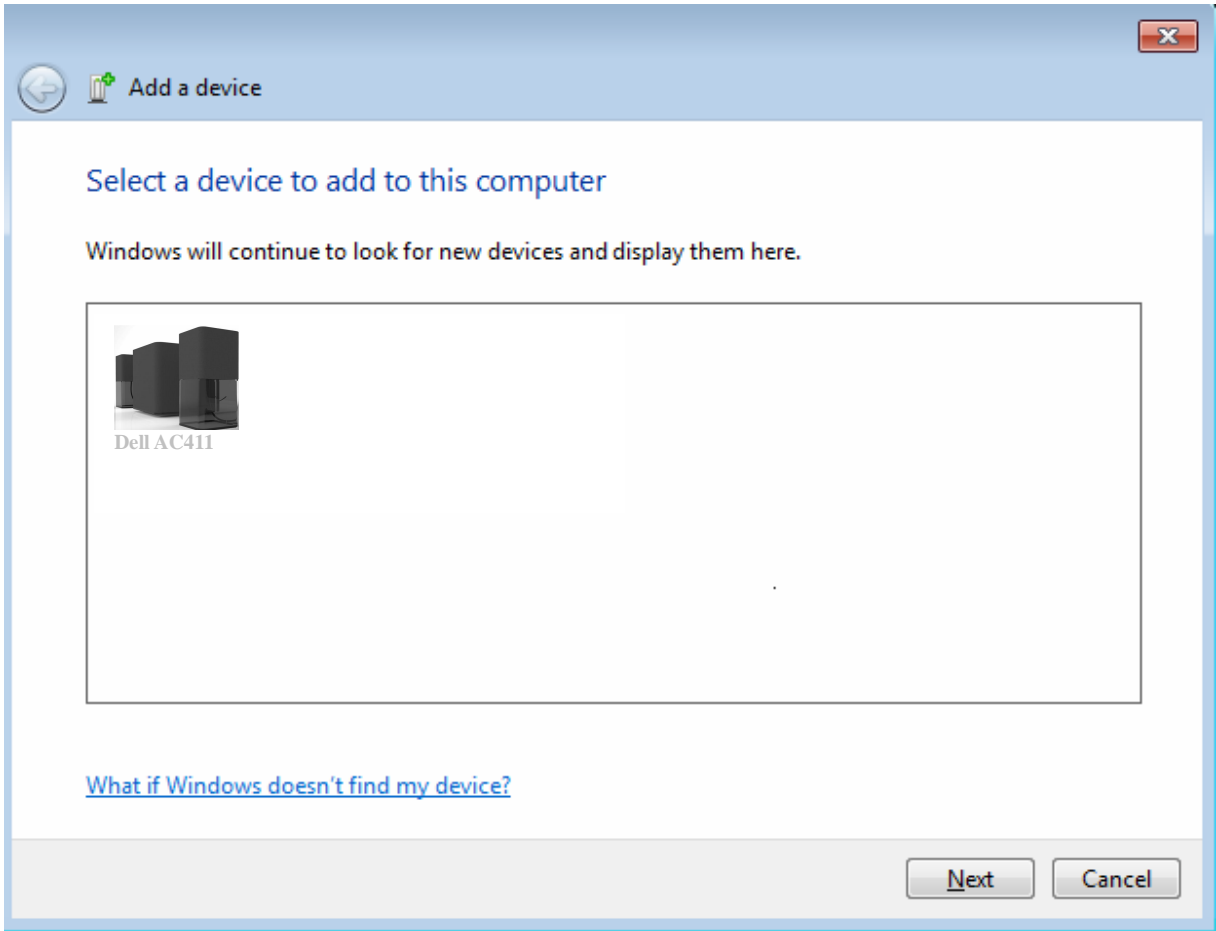
**3. How to pair the Bluetooth**

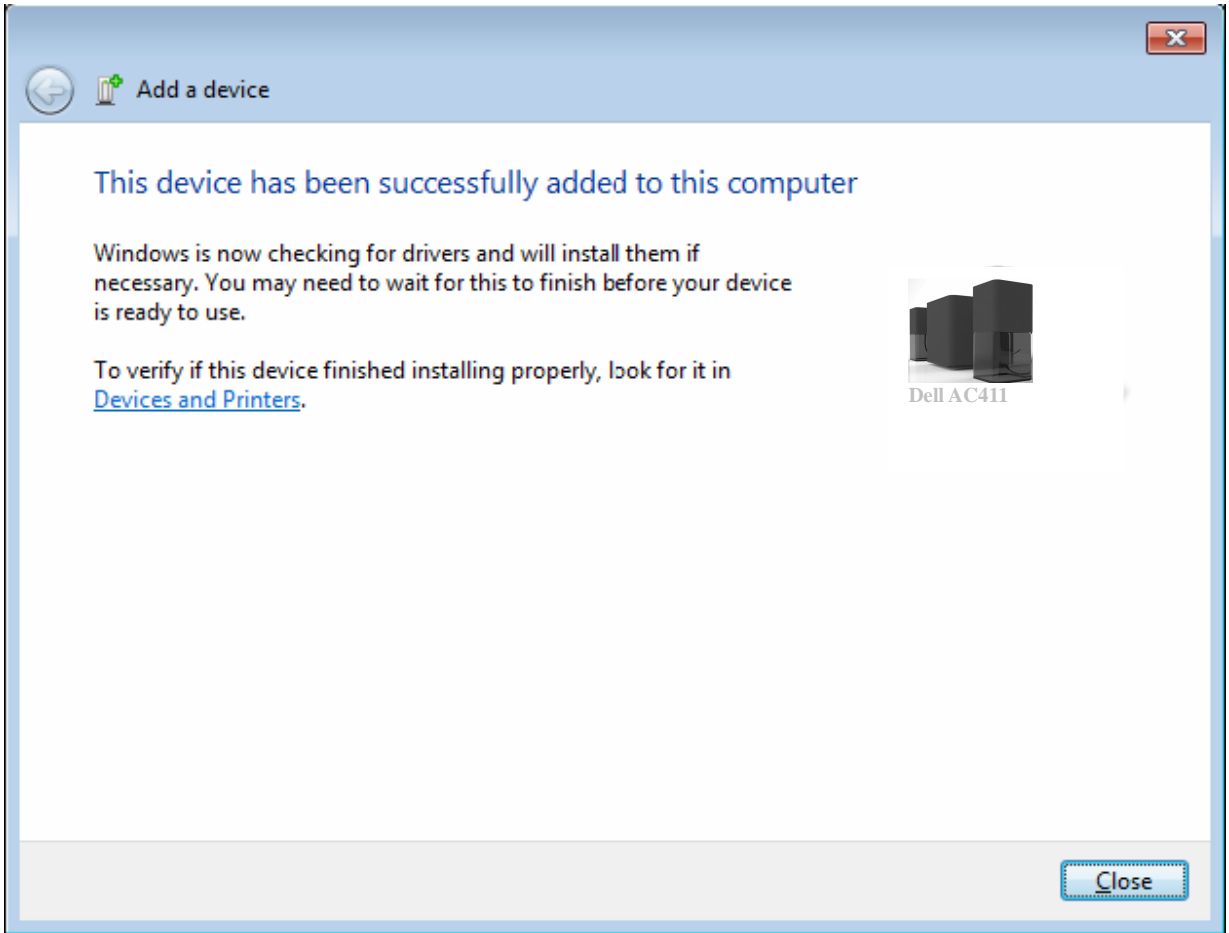


For Win7 operation system

1. Start-> control Panel->Devices and Printers -> click add a device







This device has been successfully added to this computer

Windows is now checking for drivers and will install them if necessary. You may need to wait for this to finish before your device is ready to use.

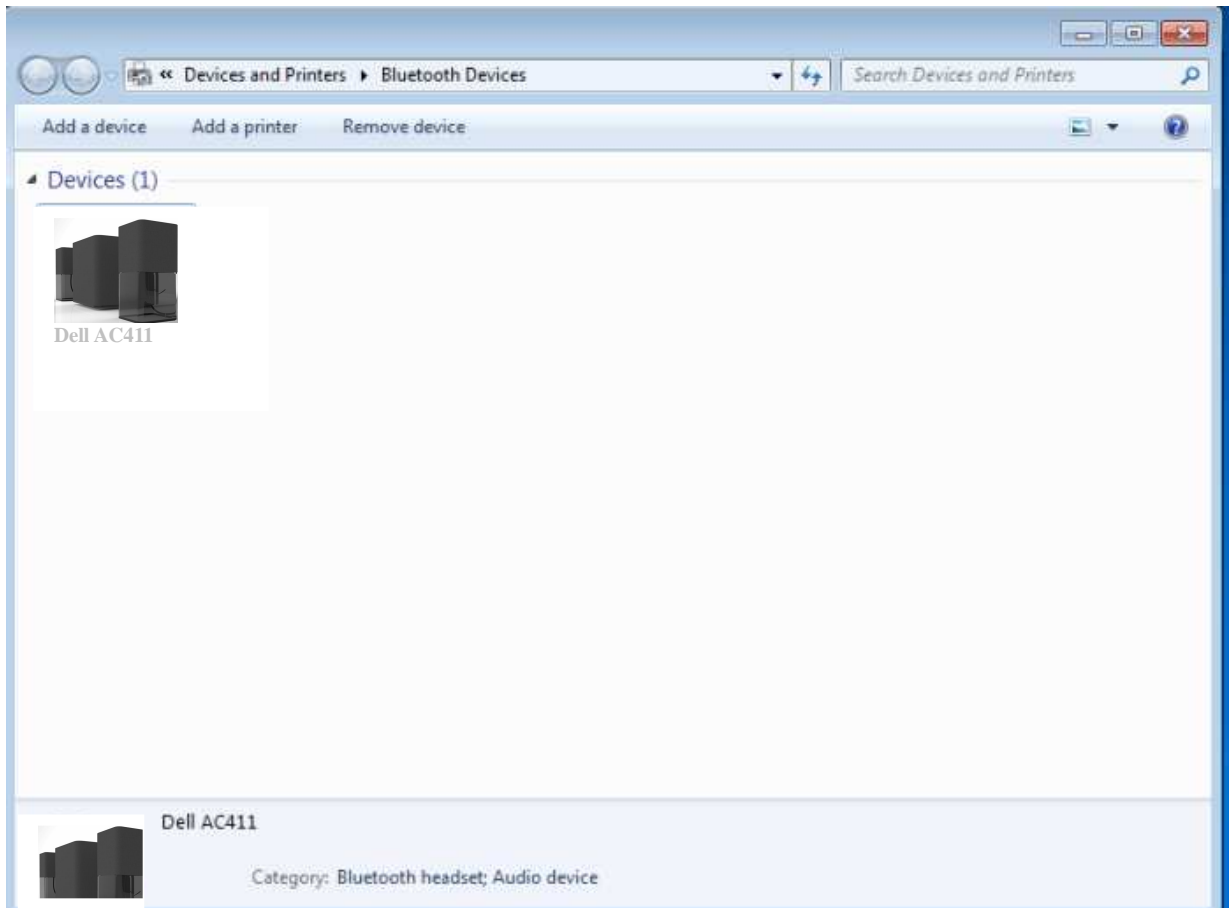
To verify if this device finished installing properly, look for it in [Devices and Printers](#).



Dell AC411

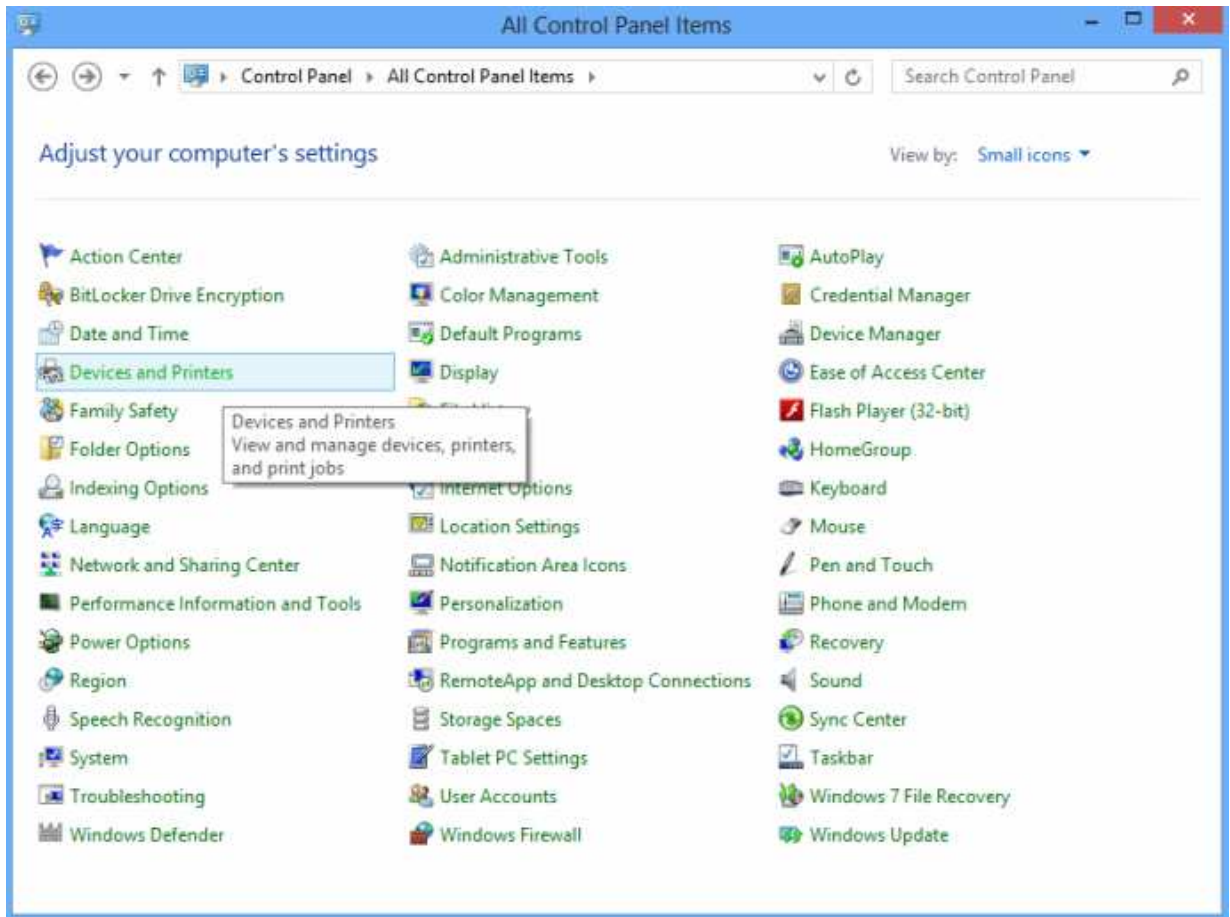
Close



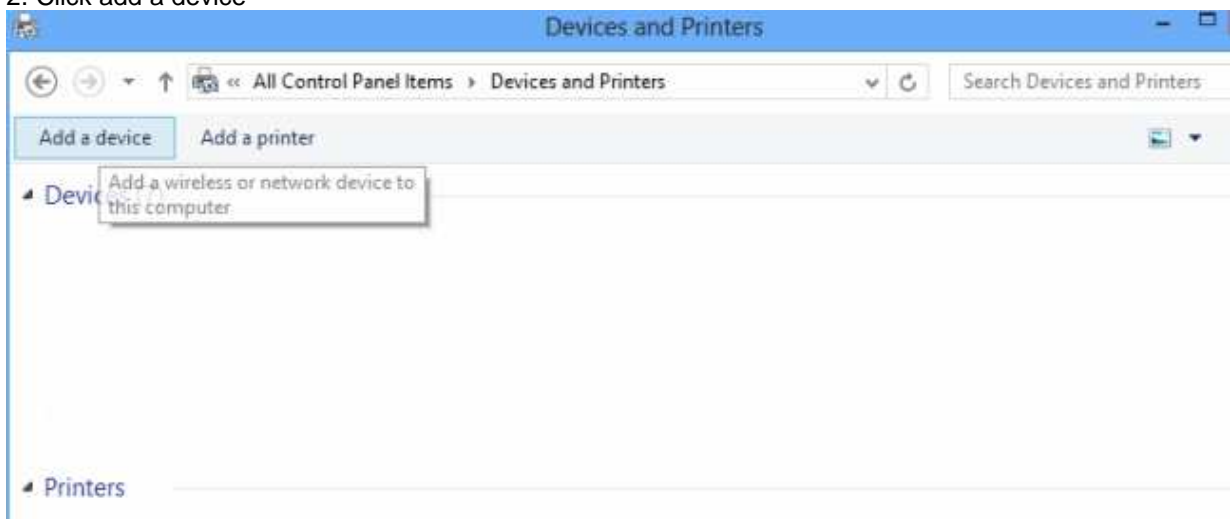


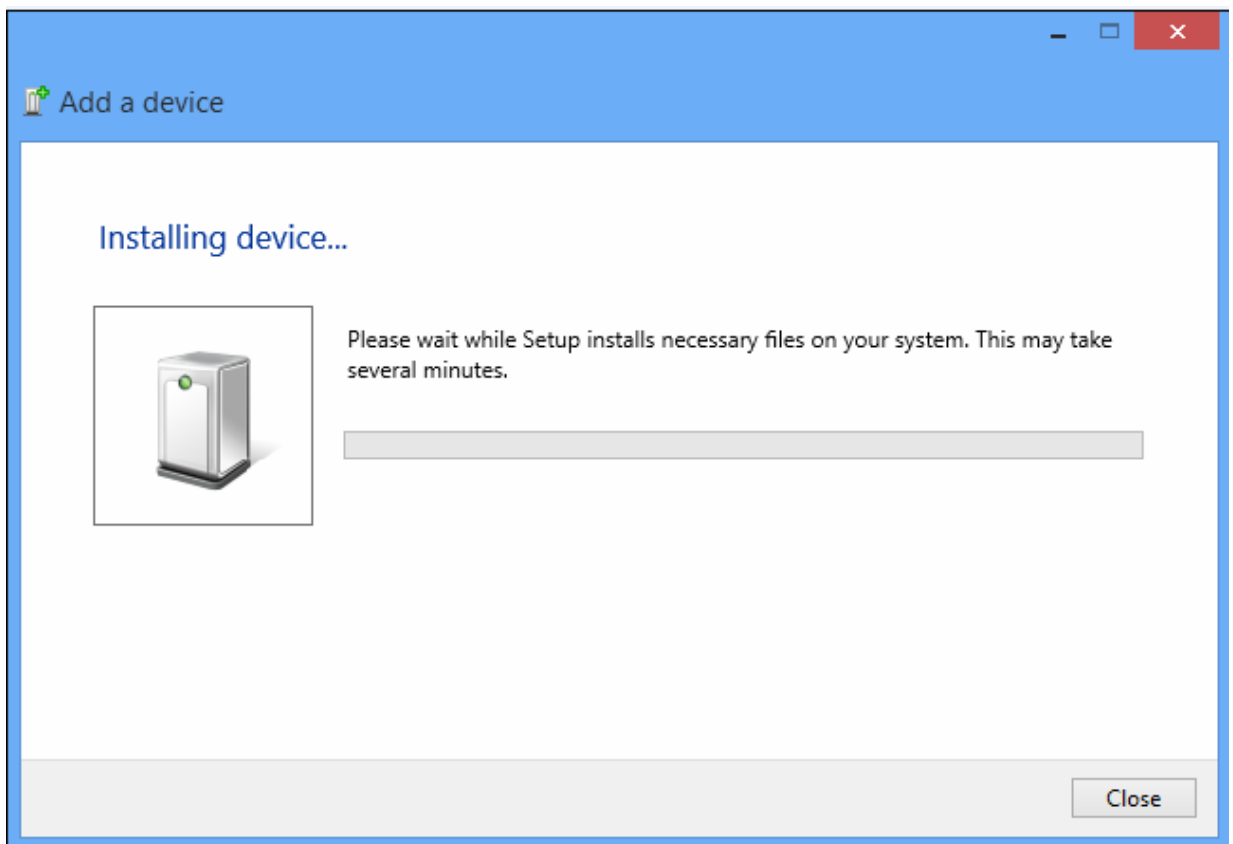
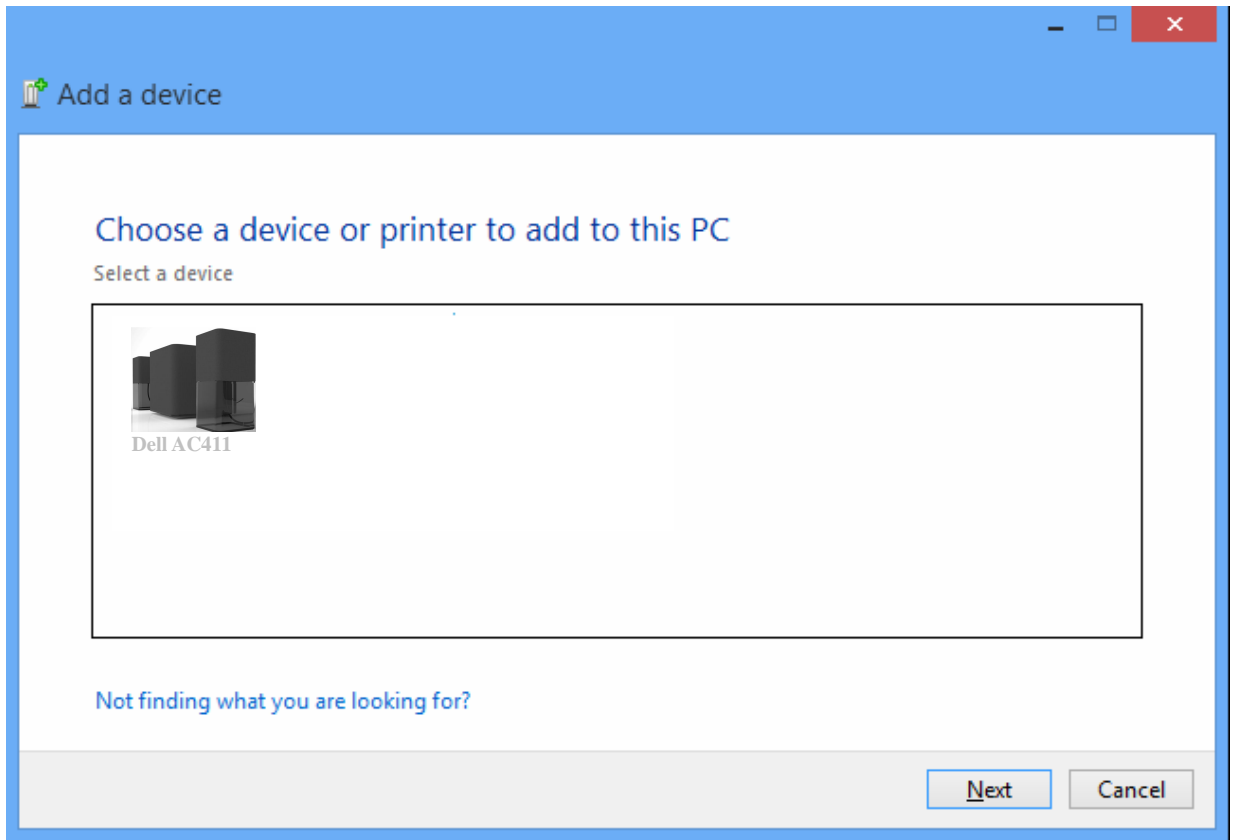
For Win8 operation system

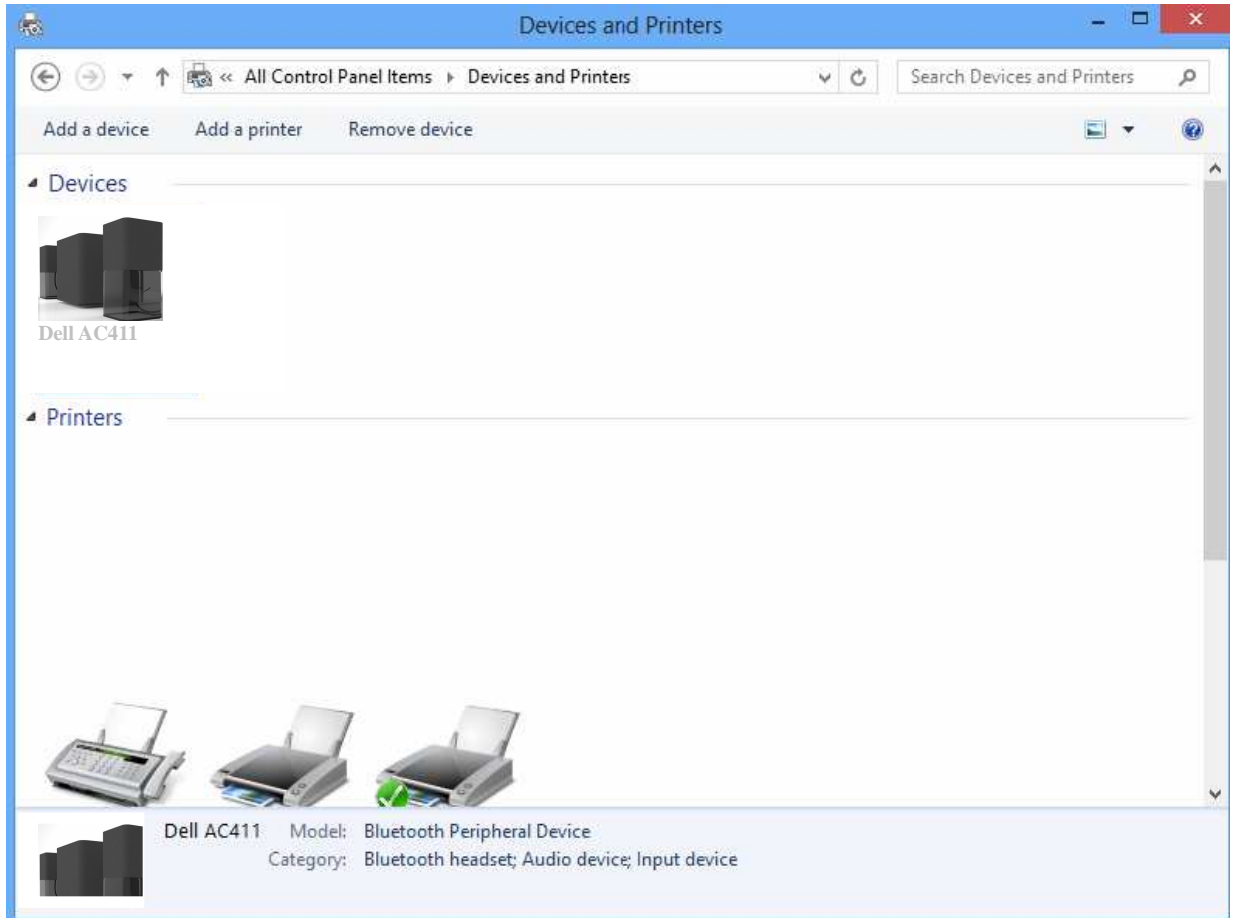
1. Start->Control panel->Devices and Printers



2. Click add a device







For other Bluetooth

Pair you Bluetooth devices after searching Dell AC411 on you Bluetooth devices.

#### 4. Trouble shooting Dell AC 411 Speaker

The most important aspect of troubleshooting of AC411 is understands that it receives its power from power adaptor.

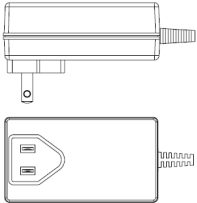
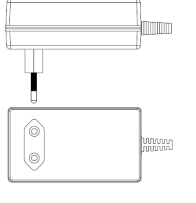
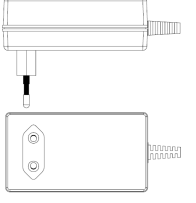
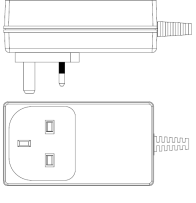
#### COMMON SYMPTOMS WHAT YOU EXPERIENCE POSSIBLE SOLUTIONS

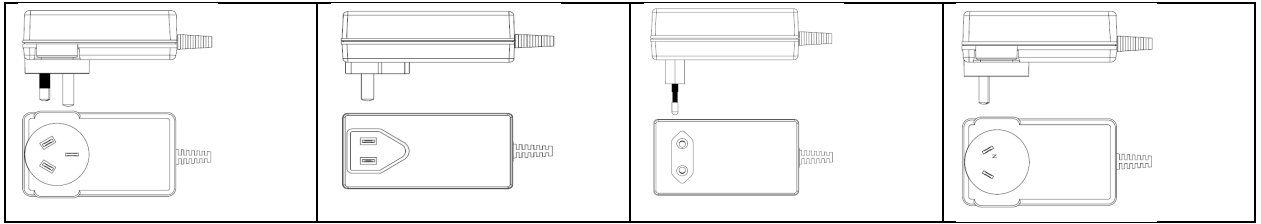
-Missing items

Troubleshooting Guide:

Packaging Check

Open the box and check if the power adaptor is presented inside the package and check if the adaptor looks like below photo or not.

<p>US</p> 	<p>Brazil</p> 	<p>EU</p> 	<p>UK</p> 
<p>AUS</p>	<p>China</p>	<p>Korea</p>	<p>ARG</p>



- Check if the main unit is placed in the packing
- Check if the two satellites (right and left satellite) are presented at the packing.
- Check if the RC remote is placed in the packing
- Check if the AUX IN cable is placed in the packing
- Check all packaging literatures are presented inside the package or not

1. Main unit	1pcs
2. Left satellite	1pcs
3 Right satellite	1pcs
4.RC remote control	1pcs
5.Power adaptor	1pcs
6. AUX In cable	1pcs
7. literature document	1pcs

Look inside the packaging again. If any items missed please require form the retailer.

- AC411 not function properly and no sound.  
 Troubleshooting Guide:  
 AC411 is in the power on with no LED on.

1. Once the adaptor plugged in, observe if the white LED on the AC411 lights up after pressing the power button.
  - i. If the LED is not lighted, check if the wall socket is faulted. Replace a known good wall socket.
  - ii. If the LED is not lighted, check if the adaptor had been plugged onto the AC411 or not
  - iii. If no light is observed after doing the above two steps then the power adaptor is defective, please replace a good one.

2. Light is observed

- i. The AC411 dose not work properly in the AUX in mode

you still have a function problem when play at Aux in mode, please check if the Aux in plug is plugged into the AUX IN Jack rightly and make sure the satellites are connected rightly and AC411 is at Aux in mode, the Bluetooth LED (blue LED) is off.

- ii. The AC411 does not work properly in Bluetooth mode

Please check if your Bluetooth device is in the Bluetooth mode  
 Please Check if the AC411's LED flashes quickly in Blue or not  
 If all those are ok please restart the AC411 and pair it again  
 Or else the AC411 is defective

The AC411does not work properly - for Windows 7 and Windows 8 OS

(1)The AC411 is NOT detected in the Devices and Printers List  
 If AC411 does not show on the Device manager panel after paired.  
 Please power off the AC411 then power on it again and make sure the AC411 is in the Bluetooth mode. Re- pair the AC411 with the computer again

(2) The AC411 is present in Device Manager without errors

The AC411 is present in the Device Manager without errors. This means the AC411 can be detected by the system.

1. Check the function of the AC411 if it already works normally

2. If the AC411 still does not work, try to replace the AC411 with a known good Speaker

- AC411 Distorted Sound

Troubleshooting Guide:

1. AUX in mode

Clear out all obstructions between the AC411 and the user.

Confirm that the audio AUX IN plug is completely inserted into the jack of the AUX IN and the sound card.

Set all volume controls to their midpoints.

Decrease the volume of the audio application.

Turn the volume level to lower by rotating the AC411's knob counter-clockwise.

Clean and reset all cables again. (E.g. power cable, satellite cable, remote control cable, AUX IN cable)

Test the AC411 speaker using another audio source (for example, a portable CD player or MP3).

Ensure no loose objects are touching the speaker.

2. Bluetooth mode

Clear out all obstructions between the portable speaker and the user.

Decrease the volume of the audio source.

Turn the volume level to lower by rotating the AC411's knob counter-clockwise.

Clean and reset cables again. (E.g. power cable, satellite cable, remote control cable)

Turn the bass or wave setting lower.

Ensure no loose objects are touching the speaker.

- Unbalanced Sound Output

Troubleshooting Guide:

Sound from only one side of portable speaker

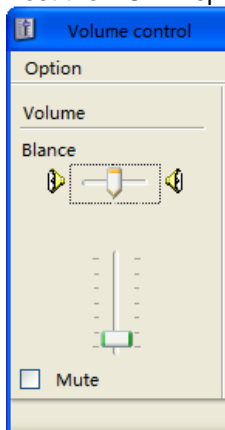
Clear any obstructions between the portable speaker and the user.

Confirm that the satellite speaker or the audio line-in plug is completely inserted into the jack of the sound card or audio source.

Set Windows audio balance controls (L-R) to their midpoints.

Clean and reset all cables again.

Test the AC411 speaker using another audio source (for example, a portable CD player or MP3)



-Weak Volume Output

Troubleshooting Guide:

1. Volume is too low

Clear any obstructions between the portable speaker and the user.

Turn the volume to higher level by rotating the knob clockwise.

Set all Bluetooth device or Windows volume controls to their maximum.

Increase the volume of the audio application.

Test the AC411 speaker using another audio source (for example, a portable CD player, MP3 or mobile phone).

-Buzzing Noise from Dell AC411 Speaker  
Troubleshooting Guide:

Is the AC411 Speaker properly putted on the desk and no obstructions?  
Make sure that there is no loose objects is hanging or touching the AC411  
Try reducing the volume to lower level by rotating the knob counterclockwise  
Make sure the wires does not interfere with the speaker

-Headphone no sound or distortion  
Troubleshooting Guide:

Headphone distortion

Is the Headphone Aux-in cable properly plugged in?

Check if the Headphone plug is properly inserted into AC411's Headphone jack.

Check if the music file is not distorted when playing without the headphone or connecting a known good headphone

1. Headphone No Sound in the AUX in mode

External Audio source not playing music and volume is 0%

Check if the platform Music Player or external Audio Source is playing music

Check if the Audio Source and the Dell AC411's volume are not set to 0%

2. Headphone No Sound in Bluetooth mode

Check if the platform Music Player or external Audio Source is playing music

Check if the Audio Source and the Dell AC411' volume is not set to 0%

Make sure Bluetooth is connected properly

Warning: Changes or modifications to this unit not expressly approved by the party responsible for compliance could void the user's authority to operate the equipment.

NOTE: This equipment has been tested and found to comply with the limits for a Class B digital device, pursuant to Part 15 of the FCC Rules. These limits are designed to provide reasonable protection against harmful interference in a residential installation. This equipment generates, uses and can radiate radio frequency energy and, if not installed and used in accordance with the instructions, may cause harmful interference to radio communications. However, there is no guarantee that interference will not occur in a particular installation. If this equipment does cause harmful interference to radio or television reception, which can be determined by turning the equipment off and on, the user is encouraged to try to correct the interference by one or more of the following measures:

Reorient or relocate the receiving antenna.

Increase the separation between the equipment and receiver.

Connect the equipment into an outlet on a circuit different from that to which the receiver is connected.

Consult the dealer or an experienced radio/TV technician for help.

This device complies with Part 15 of the FCC Rules. Operation is subject to the following two conditions: (1) this device may not cause harmful interference, and (2) this device must accept any interference received, including interference that may cause undesired operation.

Shielded cables must be used with this unit to ensure compliance with the Class B FCC limits.

This device complies with Industry Canada licence-exempt RSS standard(s). Operation is subject to the following two conditions: (1) this device may not cause interference, and (2) this device must accept any interference, including interference that may cause undesired operation of the device.

Under Industry Canada regulations, this radio transmitter may only operate using an antenna of a type and maximum (or lesser) gain approved for the transmitter by Industry Canada. To reduce potential radio interference to other users, the antenna type and its gain should be so chosen that the equivalent isotropically radiated power (e.i.r.p.) is not more than that necessary for successful communication.

Conformément à la réglementation d'Industrie Canada, le présent émetteur radio peut fonctionner avec une antenne d'un type et d'un gain maximal (ou inférieur) approuvé pour l'émetteur par Industrie Canada. Dans le but de réduire les risques de brouillage radioélectrique à l'intention des autres utilisateurs, il faut choisir le type d'antenne et son gain de sorte que la puissance isotrope rayonnée équivalente (p.i.r.e.) ne dépasse pas l'intensité nécessaire à l'établissement d'une communication satisfaisante.

Le présent appareil est conforme aux CNR d'Industrie Canada applicables aux appareils radio exempts de licence. L'exploitation est autorisée aux deux conditions suivantes: (1) l'appareil ne doit pas produire de brouillage, et (2) l'utilisateur de l'appareil doit accepter tout brouillage radioélectrique subi, même si le brouillage est susceptible d'en compromettre le fonctionnement.




57.00mm

50.00mm

# DELL

Model: AC411

Product: Wireless Speaker System

DC IN Daya: 18V  2.5A

IC: 9092A-AC411

FCC ID: VL5-AC411

CMIIT ID:

Made in China

Manufacturer

DELL (CHINA) COMPANY LIMITED

Factory Location : Shenzhen

CAN ICES-3(B)/NMB-3(B)

This device complies with Part 15 of the FCC Rules. Operation is subject to the following two conditions : (1) this device may not cause harmful interference, and (2) this device must accept any interference received, including interference that may cause undesired operation.

Consumo de energía : 23.4Wh

Consumo de energía en modo de espera : 0.43Wh



001



04-001 08



xxxxxy  
XXXXXXXXXX



BZ02



**FCC Warning :**

Warning: Changes or modifications to this unit not expressly approved by the party responsible for compliance could void the user's authority to operate the equipment.

NOTE: This equipment has been tested and found to comply with the limits for a Class B digital device, pursuant to Part 15 of the FCC Rules. These limits are designed to provide reasonable protection against harmful interference in a residential installation. This equipment generates, uses and can radiate radio frequency energy and, if not installed and used in accordance with the instructions, may cause harmful interference to radio communications. However, there is no guarantee that interference will not occur in a particular installation. If this equipment does cause harmful interference to radio or television reception, which can be determined by turning the equipment off and on, the user is encouraged to try to correct the interference by one or more of the following measures:

- \_ Reorient or relocate the receiving antenna.
- \_ Increase the separation between the equipment and receiver.
- \_ Connect the equipment into an outlet on a circuit different from that to which the receiver is connected.
- \_ Consult the dealer or an experienced radio/TV technician for help.

This device complies with Part 15 of the FCC Rules. Operation is subject to the following two conditions : (1) this device may not cause harmful interference,

and

(2) this device must accept any interference received, including interference that may cause undesired operation

**Safety Warning :**

**CAUTION  
RISK OF EXPLOSION IF BATTERY IS REPLACED  
BY AN INCORRECT TYPE.  
DISPOSE OF USED BATTERIES ACCORDING  
TO THE INSTRUCTIONS**