

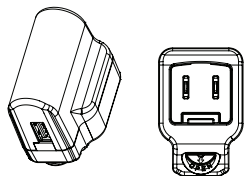
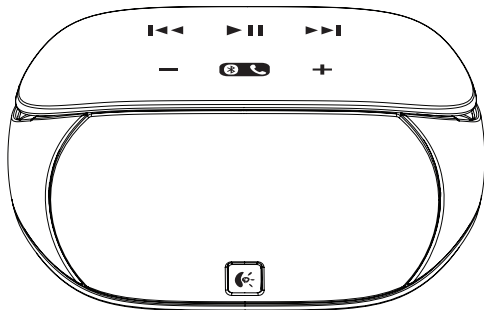


Getting started with  
Logitech® Mini Boombox



Logitech® Mini Boombox

---



## FCC INFORMATION

This equipment has been tested and found to comply with the limits for a Class B Digital Device, pursuant to Part 15 of the FCC Rules. These limits are designed to provide reasonable protection against harmful interference in a residential installation. This equipment generates, uses, and can radiate radio frequency energy and, if not installed and used in accordance with the instructions, may cause harmful interference to radio communications. However, there is no guarantee that interference will not occur in a particular installation.

If this equipment does cause harmful interference to radio or television reception, which can be determined by turning the equipment off and on, the user is encouraged to try to correct the interference by one or more of the following measures:

- Reorient or relocate the receiving antenna.
- Increase the distance between the equipment and receiver.
- Connect the equipment to an outlet on a circuit different from that to which the receiver is connected.
- Consult the dealer or an experienced radio/TV technician for help.

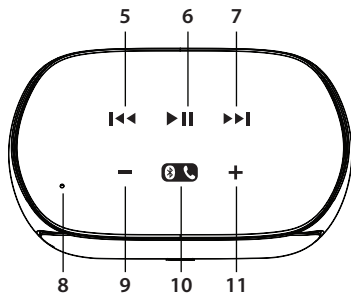
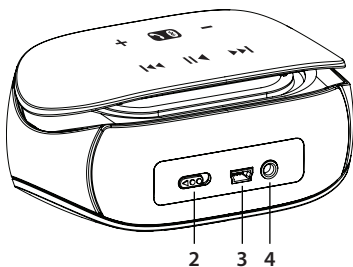
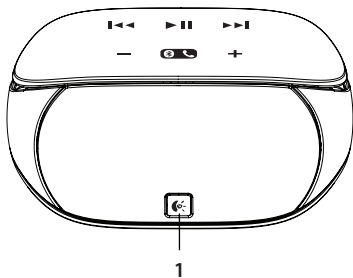
This equipment complies with part 15 of the FCC Rules. Operation is subject to the following two conditions:

1. This equipment may not cause harmful interference.
2. This equipment must accept any interference received, including interference that may cause undesired operation.

Modifications not authorized by the manufacturer may void the user's authority to operate this device.

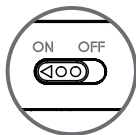
## Features

1. Status Indicator (ON, OFF, Low Batt. Power, Pairing mode)
2. Power On / OFF
3. Mini USB Charging Port
4. Aux-in Jack
5. Previous Track
6. Play / Pause or Mic mute / unmute (In a call)
7. Next Track
8. Microphone
9. Volume Down
10. Pair or Phone button
11. Volume Up

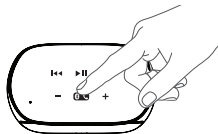


## Setup

1. Slide Power button from OFF to ON position

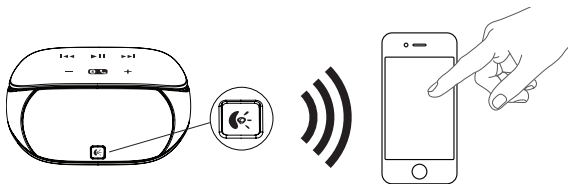


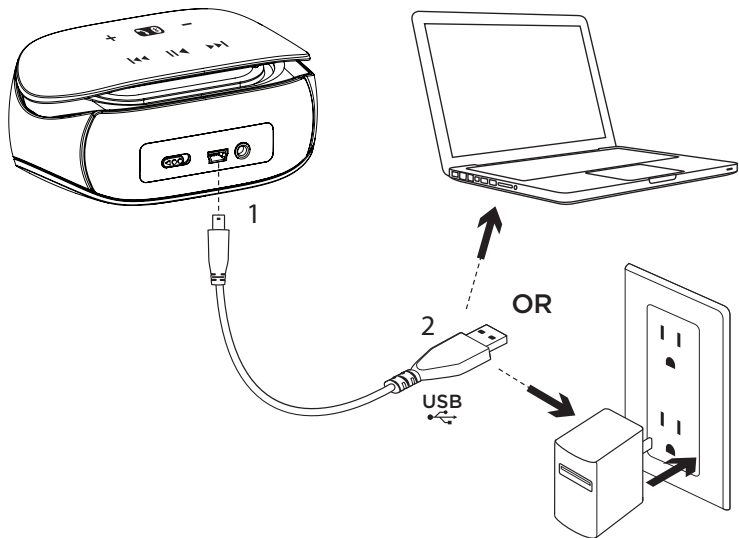
2. Turn on the Bluetooth feature on your phone or computer, and enable device discovery if not automatically enabled



3. Press and hold the Pair button for up to 15 seconds or until the Status Indicator begins to blink red and blue
4. Search and select the "Mini Boombox" in the list on your device.  
(Note: Some devices may require a pass code. Please use 0000 if prompted)

5. Status Indicator will become solid Blue when the device is paired and connected
6. Logitech Mini Boombox will now play music from your Bluetooth device





## Charging

1. Plug provided USB cable into the mini USB port on the back of your Logitech Mini Boombox
2. Connect USB cable to the Power Adaptor then plug into an AC outlet OR Connect USB cable to your computer USB port

## Status Indicator:

Blinking blue LED = Charging

Solid blue LED = Fully charged

Solid red LED = Low battery

Blinking red LED = Extremely low battery

\* Charge the Logitech Mini Boombox fully, once a month (takes approximately 4 hours).

## Battery Saving

The speaker will enter a Power Saving mode if no audio is played for 30 minutes. Slide the power switch off and then on to wake the speaker.

## Troubleshooting

- Ensure the Logitech Mini Boombox is fully charged
- Turn the speaker off then on and retry the connection procedure
- Ensure Bluetooth is enabled on your phone
- Move the devices closer together and retry the connection procedure
- Try connecting with a different Bluetooth device
- The speaker will not pair if currently paired to a device. Unpair with current device then start connection procedure with different device
- If pairing with a computer, select the Logitech Mini Boombox as the audio out device

---

## What do you think?

Please take a minute to tell us.  
Thank you for purchasing our product.

[www.logitech.com/ithink](http://www.logitech.com/ithink)